

The
Cambridge
Collection

by

Fauld

ENGLAND

fauld.com



The
Cambridge
 Collection



CONTENTS

INTRODUCTION	4 - 5
GET THE LOOK	
CLASSIC	6 - 9
TOWN HOUSE	10 - 13
COASTAL	14 - 17
HIGHLAND	18 - 21
COUNTRY	22 - 25
SIDE & LAMP TABLES	26 - 65
COCKTAIL TABLES	66 - 73
CHESTS OF DRAWERS	74 - 77
CABINETS	78 - 81
BOOKCASES	82 - 87
DINING TABLES & CHAIRS	88 - 107
OTTOMANS & BENCHES	108 - 113
BAR & COUNTER STOOLS	114 - 117
CONSOLES & DESKS	118 - 133
MIRRORS	134 - 135
Colors and Finishes	136 - 137
Numerical Index	138
Terms and Conditions	139

For regular updates and new additions to the Collection please check www.fauld/cambridge

PLEASE NOTE:
 Color finishes shown are a guide only and should not be used as exact color matches



Reflecting tradition, embracing the present, influencing the future of furniture design.

INTRODUCTION

"Fine dining is not just about fine food" David Wilder

Welcome to our latest Cambridge Collection - we have some very exciting new designs and some beautiful new finishes for you. As always, we have spent a long and enjoyable time to achieve the perfect balance of great proportions and fabulous finishes. Our Head Designer has curated some useful 'Get The Look' pages to show how versatile the collection is in any style of interior scheme.

We hope that you will enjoy discovering the collection as much as we did creating it for you.

*The Cambridge Team
at Fauld*



THE CAMBRIDGE COLLECTION

A GREAT RESOURCE TO ENABLE YOU TO CREATE UNIQUE AND STYLISH INTERIORS FOR THE WAY WE LIVE TODAY. WITH A NOD TO TRADITION WE LOOK FORWARD TO WHAT IS TO COME THROUGH CAREFUL DESIGN AND ATTENTION TO DETAIL COMBINED WITH THE QUALITY THAT YOU HAVE COME TO EXPECT FROM FAULD.

Fauld, the creator of fine English custom furniture, brings you our latest 'ready-to-go' Cambridge Collection

INTRODUCTION



David Wilder
Head Designer

My mission in life is "to leave everything more beautiful than when I found it". I hope that through Fauld, my designs find their way into the hearts of many homes and enhance your style of living.



The Astro Desk

Whilst designing the Astro Desk I remembered sitting at my school desk, (only a few years ago!) and organising my pencils in the groove at the top. So here they are on my new desk, left and right, pens to hand whether you are right or left handed! Good design should be practical and make you smile too.



All designers know that it is attention to the smaller details that make interiors special. So, with that in mind, I have added drawer linings to many of our new items and on removable panels so you can customise them yourself too.



Classic



CG032 Oval drop-leaf Dining Table in Oak finish with Yew banding: p90



CG190 Slide Table in Antiqued Yew Veneer: p40



CG794 Balustrade Arm Chair: p103



CG652 Cabriole leg Side Table in burl ash with Yew banding: p49



Detail of beautiful inlay and Yew banding.



Furniture does not need to be huge to make a statement!

CG052 Bow End Hall Table in Antiqued Yew Veneer: p120

As fashions come and go, certain pieces remain with us as 'standards' of classic style. Here at Fauld we keep careful watch on preserving the most beautiful classics from countless eras of the furniture world.

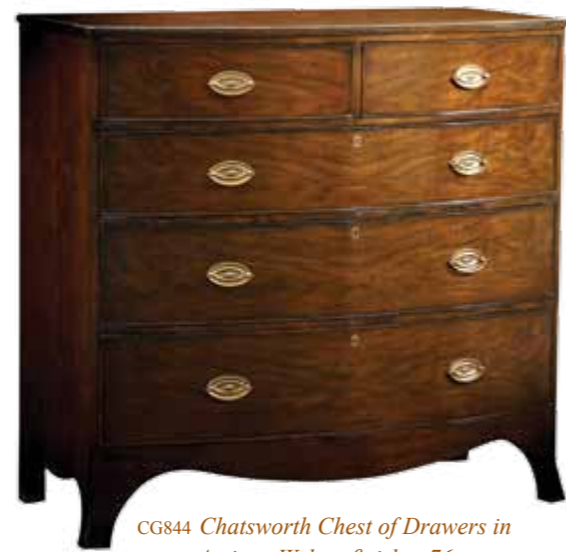
GET THE LOOK CLASSIC



The Cambridge Design Team took time to get the shape of the balustrade 'just right' on this perfectly proportioned chair.



GET THE LOOK
CLASSIC



CG844 Chatsworth Chest of Drawers in
Antique Walnut finish: p76

The Chatsworth chest of drawers, Georgian English antique copy.



Our designer added customisable drawer bottoms so that you can add your own finishing touch to this fine traditional piece.



CG541 Sloane Arched Mirror
in Walnut finish: p134



CG730 Demi Lune Server in
London Night finish: p123



Our Bow Front console is now available in Antique Walnut finish as well as Antique Yew



CG285 Bow Front Console
in Antique Yew veneer: p121



CG258A Console in
Antique Walnut finish: p130

'Classic' / *adj. & n.* : an outstanding example of a particular style, something of lasting worth or with a timeless quality.



CG763 Regency Round End Table
in London Night finish: p56



CG838 Richmond Dining Chair: p107



CG762 Three Tier Lamp Table
in London Night finish: p56



GET THE LOOK
CLASSIC



Town House



CG846 Astro desk in London Night and Soft White finish: p133

Urban living demands careful space planning. Fauld is an advocate of metamorphic furniture and pieces that can multi-task. Flip the lid of the new Amersham Flip-top console and you have a dining table whilst the beautiful Amersham dining tables cleverly extend to seat more friends.

GET THE LOOK
TOWN HOUSE



Contrast our new Antique Walnut finish with our crisp Soft White painted pieces to add light and shade for more contemporary interiors, but don't forget the mid-tones with our sultry Smoke paint finish!



CG850 Kensington Large Credenza in Antique Walnut finish with Soft White paint interior and lighting: p131



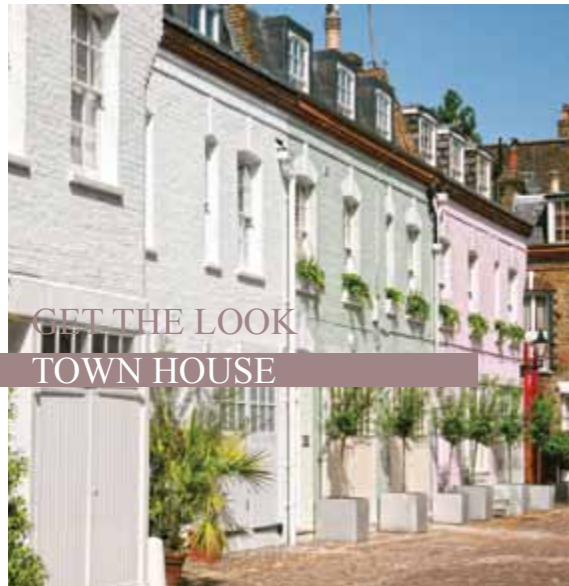
CG848 Amersham Flip-top Console in Antique Walnut finish: p130



CG848 Amersham Flip-top Console (open) makes a useful desk



CG843B Screen End Lamp Table in Smoke paint finish: p63



GET THE LOOK
TOWN HOUSE

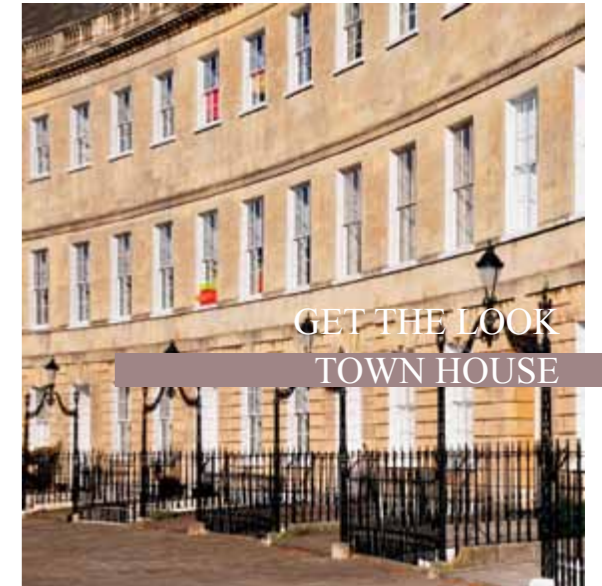


CG839D Kensington Chest of Drawers in Antique Walnut finish: p77

Only through true knowledge of Tradition can great Transitional Style be achieved. The fine lines of our pieces that you can see here are testament to the Fauld team's collective knowledge of traditional furniture.



CG731 Box on Stand in Light Walnut finish: p64



GET THE LOOK
TOWN HOUSE



CG198 Bookcase in Antiqued Yew finish: p84

Smart & timeless - these pieces work so effortlessly together and provide you with endless combinations to create elegant interiors that function perfectly in town houses and apartments too.



CG836A Kensington Corner Cabinet in Walnut finish: p81



CG836B Kensington Corner Cabinet in Soft White finish: p81



CG839B Bow Front Chest of Drawers in Smoke paint finish: p77

Cross referencing finishes pulls an interior scheme together - and that is why we have produced key pieces in various colors.

The 'Amersham' look - the chamfer underneath the top of the table and the way that the apron 'passes in front' of the legs give the pieces in our Amersham Collection their distinct silhouettes.



CG833 Amersham Extending Dining Table in Antique Walnut finish: p93



CG837 Belgravia Dining Chair: p106



CG726 Nest of Tables in London Night finish: p52



CG727 Console in London Night finish: p122



Coastal



CG845 Astro Desk in Soft White and Avignon finish: p133



CG840A New Screen End Coffee Table in Soft White finish: p72



CG789A & CG790A Ladderback Chairs in Soft White finish: p100 & p101



CG835B NEW - Winchester Extending Table in Thames Wash finish: p95



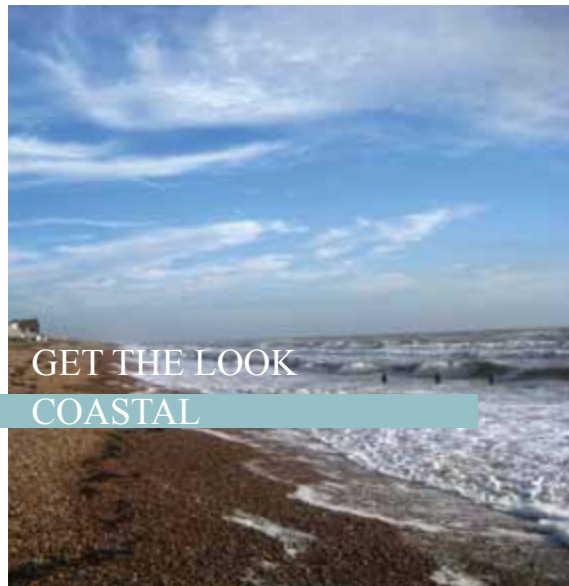
CG784E Small End of Sofa X-End Table in Cornish Blue finish: p36



Extending the Winchester dining table is so easy, making room to invite more friends to dinner!

Beach house or lake house, you can get the look with crisp painted pieces to create a perfect relaxed interior for living by water. We have curated a collection in our 'Thames Wash' and 'Avignon' finishes which beautifully complement our new 'Cornish Blue' paint color and our popular 'Soft White' finish.

GET THE LOOK
COASTAL



GET THE LOOK
COASTAL



CG782E Screen End Bookcase in
Cornish Blue finish: p87



CG809 Hardwick End Table in Thames Wash finish: p51



GET THE LOOK
COASTAL



CG779D Cricket Table
with Avignon top and
Soft White finish base: p29



CG756A Gothic Interlace Chair
in Soft White finish: p96



CG757A Gothic Interlace Chair in Soft White finish: p97



CG783E X-End lamp table in Cornish Blue finish: p35

One of our most popular finishes, Thames Wash, combines so well with painted furniture to create a foundation for a coastal interior. We have kept the Cornish Blue color almost neutral to allow the addition of other shades of blue.



CG800E X-End Cocktail Table in
Cornish Blue finish: p72



CG782A Screen End Bookcase in Soft White finish: p86



CG813 Hardwick End Table in Thames Wash finish: p51

Sand, sea and breaking waves are represented here with our Avignon, Cornish Blue and Soft White finishes - perfect Coastal!



CG776D Highbury Square Mirror
in Soft White finish: p135



CG761B Cricket Table in
Thames Wash finish: p28



Highland



CG628 X-End Bookcase in Old Worlde finish: p84



CG572B Cocktail Table in Old Worlde finish: p69



CG798 Tuscany leg Dining Chairs: p105 with CG791D Hayward Dining Table in Oak finish: p92



CG196 Ottoman Bench: p110



In the Highlands, many beautiful, natural elements come together to create breathtaking panoramas just as we have combined them to bring you the rustic pieces that you see here.

Mix our Oak and Old Worlde finishes to add great mountain-style to interiors. For more contemporary touches, add pieces in London Grey and our Smoke paint finishes.

GET THE LOOK
HIGHLAND





GET THE LOOK
HIGHLAND

The 2-seater Irish Primitive Windsor Settle is perfect for a hall or boot room.



CG704MO Irish Primitive Windsor Settle in Oak finish: p110



CG721 Hayward Lamp Table in London Grey finish: p59

CG781E Hayward Lamp Table in Thames Wash finish top and Smoke paint base: p58

Lighten it up with this Hayward Lamp Table in Thames Wash and a Smoke painted base.



CG626 Two Door Hall Cupboard in Old Worlde finish: p80

Not just for the hall, this cupboard is great anywhere for useful storage.



CG275 Oak Box makes a great cocktail table or as a perfect blanket chest. It even has a brass plaque that you can engrave: p68

CG202A Ottoman Stool in Soft White paint finish: p113



CG202 Ottoman Stool in Oak finish: p111



CG202B Ottoman Stool in Smoke paint finish: p113



GET THE LOOK
HIGHLAND

Rich, rustic Oak finishes and the traditional solid designs evoke a grand house in the hills. To achieve a more contemporary interior use pieces from our collection in London Grey or Smoke finishes.



CG853A Winchester Extending Dining Table in Oak finish: p94

The Irish Primitive Windsor Chair is perfect with the Winchester Table.



CG703MO Irish Primitive Windsor Side Chair in Oak finish: p98



CG853A Winchester Extending Dining Table in Oak finish (open): p94

This handsome dining table easily extends with two non-storing leaves to seat twelve.



Country



CG116 Gateleg Chairside Table in Oak finish: p30



CG205 Grog Table in Oak finish with Yew banding: p42



CG296 Console Table in Oak finish with Yew banding: p120

Only time and careful attention to detail can produce the beautiful aged finish that you see here on these Oak pieces. Each piece is synonymous with an original English antique.



CG749 Burford 'easy glide' Extending Refectory Dining Table in Oak finish: p90



A country house does not have to be in the country. "These beautiful pieces have been curated from our main collection to show the epitome of classic "Country Style" furniture. Many pieces here are faithful versions of English antiques that we have known and loved whilst others, like the Canterbury Box-on-Stand, are our own designs that we hope will be antiques of the future! Don't forget that you can 'showcase' a stand-alone country piece in a very contemporary setting."

David Wilder - Head Designer

GET THE LOOK
COUNTRY



GET THE LOOK
COUNTRY



CG757MO Gothic Interlace Windsor Arm Chair in Oak finish: p97



CG098 Joynt Stool in Oak finish: p31



CG101 Joynt Stool with Swivel Top in Oak finish: p31

Traditional Joynt Stools are a must for any country house and make excellent side tables.



GET THE LOOK
COUNTRY



CG597 End Table in Oak finish: p49



CG151 Oval Gateleg Cocktail Table in Oak finish: p68

Classic Country Style, these pieces form the foundation for an authentic traditional interior.



The Hertford Dining Table is perfect at the heart of the kitchen.

CG765 Hertford Dining Table, Avignon finish top with base in Soft White paint finish: p91



Avignon finish Oak: brushed and limed.



CG032 Oval Drop Leaf Pad Foot Dining Table in Oak finish: p90

This Pad Foot Drop Leaf Table can be almost anything that you want it to be: Console, Sofa Table or Desk or Dining Table. Yew banding on the top coordinates with the Cricket Tables.



Oak finish, hand adze with Yew banding



CG790A Yorkshire Ladderback Arm in Soft White paint finish: p101

CG789B Yorkshire Ladderback Side in Smoke paint finish: p100



CG079 Large Cricket Table in Oak finish with Yew banding on top: p28

These classic Cricket Tables are available in three sizes.



SIDE & LAMP TABLES

CG156B

THE OMNIPRESENT SIDE TABLE, ALWAYS READY, BY THE SOFA, CHAIRSIDE OR EVEN BEDSIDE - THE CAMBRIDGE COLLECTION GIVES YOU AN EXTENSIVE SELECTION TO CHOOSE FROM.



SIDE & LAMP TABLES

CG779D

Cricket Table

Oak Finish

Yew wood crossbanding

- CG077 Small 28" H x 24" dia
- CG078 Medium 28" H x 30" dia
- CG079 Large 28" H x 36" dia



SIDE & LAMP TABLES



CG761A
Cricket Table
 London Grey finish
 28" H x 30" dia

CG761B
Cricket Table
 Thames Wash finish
 28" H x 30" dia



Avignon finish

SIDE & LAMP TABLES

CG779D
Cricket Table
 Avignon top with
 Soft White painted base
 28" H x 30" dia



Thames Wash finish

CG779E
Cricket Table
 Thames Wash top with
 Smoke painted base
 28" H x 30" dia





CG070
Barley Twist Wedge Table
Oak finish
28" H x 28" W x 28" D

SIDE & LAMP TABLES



CG098
Joynt Stool
With Fixed Top, Oak finish
21" H x 19" W x 12" D
CG099
With lift up lid, Oak finish
CG100
With hidden drawer, Oak finish

SIDE & LAMP TABLES



CG116
Gateleg Chairside Table
With 2 drawers, Oak finish
26" H x 42" W x 14" D (32" open)
(centre section 14" when closed)

CG101
Joynt Stool
With Swivel Top, Oak finish
21" H x 21" W x 13.5" D
(opens to 27")



CG113
Joynt Stool
With Gateleg, Oak finish
20" H x 21.5" W x 9" D
(opens to 27")



SIDE & LAMP TABLES



CG056
X-End Table
With Slide, Cherry finish
28" H x 28" W x 18" D

SIDE & LAMP TABLES



CG114
Round Joynt Stool
'S' detail in top, Oak finish
19" H x 14" dia

CG138
Chairside Table
With Slide, concave front,
Cherry finish
23" H x 16" W x 15" D



Cherry finish



CG159
X-End Table
With Slide & 2 shelves, Cherry finish
26" H x 26" W x 15" D



CG159B
X-End Table
With Slide & 2 shelves, Thames Wash finish
26" H x 26" W x 15" D

SIDE & LAMP TABLES



CG783A
X-End Lamp Table
Soft White paint finish
26" H x 26" W x 15" D

SIDE & LAMP TABLES



CG783B
X-End Lamp Table
Smoke paint finish
26" H x 26" W x 15" D



CG783E
X-End Lamp Table
Cornish Blue paint finish
26" H x 26" W x 15" D

CG472
Small End of Sofa
X-End Side Table
With Slide, Cherry finish
21" H x 21" W x 12" D



SIDE & LAMP TABLES

SIDE & LAMP TABLES

CG784A
Small End of Sofa X-End Table
Soft White paint finish
20" H x 21" W x 12" D



CG784E
Small End of Sofa
X-End Table
Cornish Blue paint finish
20" H x 21" W x 12" D



CG784B
Small End of Sofa X-End Table
Smoke paint finish
20" H x 21" W x 12" D



CG156
End Table
 With shelf and deep drawer,
 Oak finish
 26" H x 26" W x 15" D



SIDE & LAMP TABLES

CG828A
End Table
 With shelf and deep drawer,
 Soft White paint finish
 26" H x 26" W x 15" D



SIDE & LAMP TABLES



CG156B
End Table
 With shelf and deep drawer,
 Thames Wash finish
 26" H x 26" W x 15" D

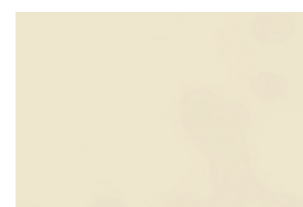


Oak finish



Thames Wash finish

CG828B
End Table
 With shelf and deep drawer,
 Smoke paint finish
 26" H x 26" W x 15" D



Soft White paint finish



Smoke paint finish



CG192
End Table
With Serpentine top
and 3 drawers,
Antiqued Yew veneer
28" H x 24" W x 16" D



SIDE & LAMP TABLES



CG190
Slide Table
With Serpentine top and Slide,
Antiqued Yew veneer
26" H x 14" W x 17" D



SIDE & LAMP TABLES

CG175
Round Tripod Table
Oak finish with Yew wood banding
28" H x 30" dia



CG200
Box on Stand
With 1 drawer,
exposed dovetails
Oak finish
24" H x 21" W x 16" D

SIDE & LAMP TABLES



CG205
Round Grog Table
Barley Twist legs
Yew banding, Oak finish
28" H x 31" dia



CG238
Side Table with Gallery Top
With slide, Antiqued Yew veneer
26" H x 14" W x 20" D

SIDE & LAMP TABLES



CG400
Round Side Table
With Gothic arches,
Oak finish
27" H x 31" dia



CG402
Coopers Side Table
With Yew banding, Oak finish
24" H x 16" dia

CG498
Lamp Table
Old Worlde finish
29" H x 22" W x 22" D





CG584
Oval End Table
With 1 drawer,
Yew wood banding, Oak finish
25" H x 26" W x 18" D

SIDE & LAMP TABLES



CG589
Chairside Table
With shaped top, Cherry finish
26" H x 22" W x 12" D

SIDE & LAMP TABLES



CG586
End Table
With turned legs, pull out slide,
Cherry finish
26" H x 22" W x 14" D

CG591B
Round End Table
With 3 shelves,
Old Worlde finish
29" H x 28" dia





CG595
Three Drawer End Table
Old Worlde finish
26" H x 30" W x 16" D



CG597
End Table
With one drawer and shelf,
Oak finish
26" H x 26" W x 16" D



CG625
End Table
With slide, diamond inset top,
Old Worlde finish
26" H x 26" W x 15" D

CG652
Cabriole leg Side Table
With two drawers in burl ash
with Yew banding
28" H x 25.5" W x 18" D



CG713
Round End Table
London Grey finish
26" H x 25.5" dia



SIDE & LAMP TABLES

CG813
Hardwick End Table
Thames Wash finish
26" H x 26" W x 16" D



SIDE & LAMP TABLES

CG816
Kensington End Table
London Night finish
26" H x 26" W x 15" D



CG809
Hardwick End Table
Thames Wash finish
24" H x 24" W x 24" D



SIDE & LAMP TABLES



CG726
Nest of Tables
London Night finish
25" H x 16" W x 21" D



CG728
Round Lamp Table
London Night finish
24" H x 18.25" dia

SIDE & LAMP TABLES

CG729
Round Lamp Table
London Night finish
27.25" H x 26" dia





CG764
Two Drawer End Table
London Night finish
32" H x 29.5" W x 16" D

SIDE & LAMP TABLES



CG786A
Two Drawer Side Table
Soft White paint finish
32" H x 29.5" W x 16" D

SIDE & LAMP TABLES

CG786B
Two Drawer Side Table
Smoke paint finish
32" H x 29.5" W x 16" D



CG763
Regency Round End Table
London Night finish
26" H x 24" dia



SIDE & LAMP TABLES

CG780D
Tripod Table
Avignon finish
28" H x 30" dia



SIDE & LAMP TABLES

CG762
Three Tier Lamp Table
London Night finish
26.5" H x 22" W x 14" D



CG780E
Tripod Table
Thames Wash finish
28" H x 30" dia





Avignon finish



CG781D
Hayward Lamp Table
Avignon finish top with
Soft White base
27" H x 30" dia

SIDE & LAMP TABLES



CG781E
Hayward Lamp Table
Thames Wash finish top with
Smoke paint base
27" H x 30" dia



Thames Wash finish

SIDE & LAMP TABLES



CG721
Hayward Lamp Table
London Grey finish
27.5" H x 30" dia



CG716
Scissor Side Table
With slide, London Grey finish
26" H x 26" W x 15" D



CG785A
Scissor Side Table
Soft White paint finish
26" H x 26" W x 15" D



CG785B
Scissor Side Table
Smoke paint finish
26" H x 26" W x 15" D



CG843D
Screen End Lamp Table
Antique Walnut finish
26" H x 26" W x 15" D



CG843A
Screen End Lamp Table
Soft White paint finish
26" H x 26" W x 15" D

CG843B
Screen End Lamp Table
Smoke paint finish
26" H x 26" W x 15" D





CG731
Small Box on Stand
Light Walnut finish
22.5" H x 18.5" x 10.5 D

SIDE & LAMP TABLES



CG307
Box on Stand
Antiqued Yew veneer
26" H x 20" W x 16" D

SIDE & LAMP TABLES



CG760
Box on Stand
London Night finish
26" H x 20 W x 16.5" D

CG849
Canterbury
Box on Stand
With London map lining
Oak finish
22" H x 22" W x 14" D



London map lined interior



THE CENTRE OF ANY SITTING ROOM, THE COCKTAIL (OR COFFEE) TABLE SHOULD MAKE A STATEMENT BUT BE FUNCTIONAL TOO.

THE CAMBRIDGE DESIGN TEAM HAS CREATED THIS COLLECTION OF VARIED DESIGN AND STYLE IN VERSATILE FINISHES.

COCKTAIL TABLES



CG800E

COCKTAIL TABLES



CG151



COCKTAIL TABLES

CG151

Oval Gateleg Cocktail Table

With secret drawer at each end, Oak finish

20" H x 60" L x 18" D

(extends with both flaps open to 48" W)



CG275

Oak Box

With Yew wood inlaid top, exposed dovetails,

removable brass plaque, Oak finish

21" H x 42" W x 24" D



COCKTAIL TABLES

CG572B

Cocktail Table with four drawers

Diamond top, Old Worlde finish

20" H x 52" W x 30" D



CG814

Hardwick Cocktail Table

Thames Wash finish

20" H x 52" W x 30" D



CG471
Rectangular X-End Cocktail Table
Cherry finish
20" H x 42" W x 26" D

COCKTAIL TABLES



CG471A
Rectangular X-End Cocktail Table
London Night finish
20" H x 42" W x 26" D



CG471B
Rectangular X-End Cocktail Table
Thames Wash finish
20" H x 42" W x 26" D



COCKTAIL TABLES

CG800A
X-End Cocktail Table
Soft White paint finish
20" H x 42" W x 26" D



CG800B
X-End Cocktail Table
Smoke paint finish
20" H x 42" W x 26" D

COCKTAIL TABLES



CG800E
X-End Cocktail Table
Cornish Blue paint finish
20" H x 42" W x 26" D

COCKTAIL TABLES



CG840B
Screen End Coffee Table
Smoke paint finish
21" H x 44" W x 28" D



CG840A
Screen End Coffee Table
Soft White paint finish
21" H x 44" W x 28" D



CG840D
Screen End Coffee Table
Antique Walnut finish
21" H x 44" W x 28" D



CHESTS OF DRAWERS

CG844

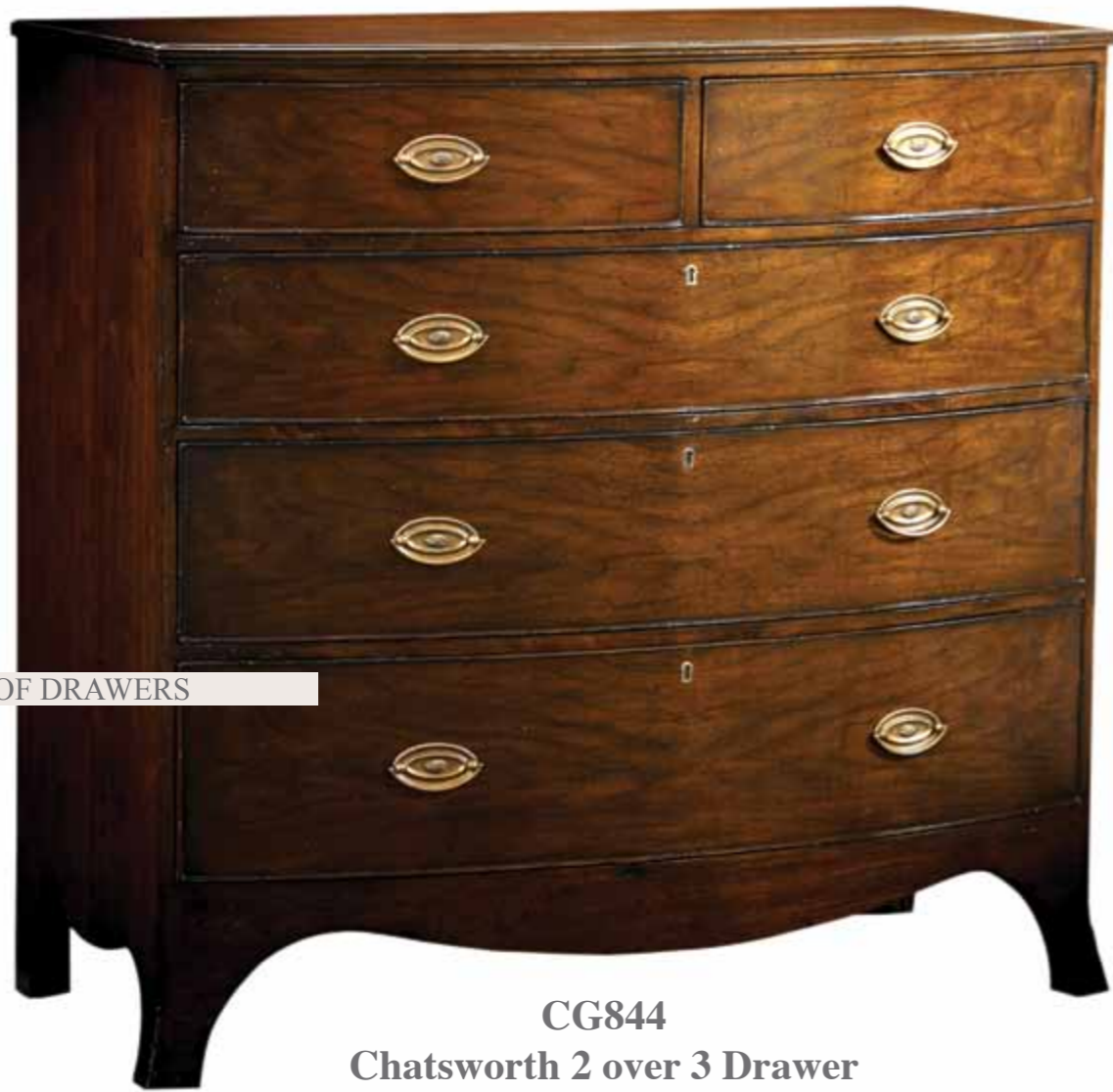
OUR COLLECTION OF CHESTS OF DRAWERS IS CREATED FROM OUR LONG HERITAGE OF YEARS OF FINE CABINETRY.

BEAUTIFULLY MADE, THEY BRING YOU STYLISH STORAGE SOLUTIONS FOR COUNTLESS APPLICATIONS.



CHESTS OF DRAWERS

CG839A



CG844
Chatsworth 2 over 3 Drawer
Bow Front Chest
Antique Walnut finish
41" H x 42.5" W x 21.5" D



Each drawer is lined with London map paper



CG839D
Kensington Chest of Drawers
Antique Walnut finish
34.5" H x 39.5" W x 20" D



CG839A
Kensington Chest of Drawers
Soft White paint finish
34.5" H x 39.5" W x 20" D



CG839B
Kensington Chest of Drawers
Smoke paint finish
34.5" H x 39.5" W x 20" D



CABINETS

CG836B

STATEMENT PIECES THAT CAN EITHER PROVIDE GREAT STORAGE TO KEEP ROOMS TIDY OR THAT CAN SHOWCASE TREASURED POSSESSIONS. EITHER WAY, THE DESIGNS IN THIS COLLECTION WILL PROVIDE YOU WITH THE PERFECT PIECE.

CABINETS



CG050

CG050
Double Corner Cabinet
With glass shelves and lighting,
mappa burl inlays, Antiqued Yew veneer
86.5" H x 42.5" W x 26.5" D



CABINETS



CG626
Two Door Hall Cupboard
With two drawers, Old Worlde finish
31" H x 30" W x 12" D



CG836A
Kensington Corner Cupboard
Walnut finish with Soft White paint
interior, lighting and glass shelves
78" H x 47.5" W x 27" D
(internal depth 21.5")

CABINETS



CG836B
Kensington Corner Cupboard
Soft White paint finish



BOOKCASES

CG629

EVEN THOUGH WE LIVE IN THE 'ELECTRONIC AGE', WE STILL READ AND TREASURE OUR BOOKS! WE ALSO WANT TO HAVE THEM DISPLAYED BEAUTIFULLY AND 'TO HAND'. WHICH IS WHY WE HAVE DESIGNED THIS STUNNING COLLECTION. MANY PIECES ARE IDEAL FOR THAT LARGE FLAT SCREEN TOO!



BOOKCASES

CG782E



CG198
Two Drawer Bookcase
Antiqued Yew veneer
(with wire management hole set up)
33" H x 48" W x 16" D

BOOKCASES



CG629
Small X-End Bookcase
Old Worlde finish
32" H x 16" W x 12" D

BOOKCASES



CG628
X-End Bookcase
Old Worlde finish
32" H x 32" W x 12" D



CG632
X-End Long Bookcase
With diamond top, Old Worlde finish
33" H x 54" W x 12" D



CG482
Screen End Bookcase
Cherry finish
40" H x 46" W x 15" D

BOOKCASES



CG782B
Screen End Bookcase
Smoke paint finish
40" H x 46" W x 14" D

BOOKCASES



CG782A
Screen End Bookcase
Soft White paint finish
40" H x 46" W x 14" D



CG782E
Screen End Bookcase
Cornish Blue paint finish
40" H x 46" W x 14" D

PRESENTING OUR TABLES AND CHAIR COLLECTIONS



DINING TABLES & CHAIRS

HERE AT FAULD WE HAVE ALWAYS SAID "FINE DINING IS NOT JUST ABOUT FINE FOOD". THE DINING TABLE IS THE PLACE WHERE WE GATHER OUR FRIENDS SO WE SHOULD SIT THEM COMFORTABLY.

CG833



CG794



DINING TABLES & CHAIRS

CG789A



CG032
Oval Drop Leaf Pad Foot Dining Table
With Yew wood crossbanding, Oak finish
30.5" H x 72" L x 48" D

DINING TABLES & CHAIRS



CG717
Hayward Dining Table
London Grey finish
30" H x 66" dia

DINING TABLES & CHAIRS



CG749
Burford 'easy glide' Refectory Dining Table
Turned leg, with 2 self storing pull out leaves, Oak finish
30.5" H x 96" L x 40" D (extends to 136")



CG765
Hertford Dining Table
Turned leg, top in Avignon finish,
Base in soft white paint finish
30.5" H x 67" L x 40" D



CG791C
Hayward Dining Table
Avignon finish top with
Soft White paint base
30" H x 54" round

DINING TABLES & CHAIRS



CG791D
Hayward Dining Table
Oak finish
30" H x 54" round



CG830
Amersham Extending Dining Table
With two central leaves (non storing)
Antique Walnut finish
30" H x 65" W x 40" D (extends to 108")

DINING TABLES & CHAIRS



CG833
**Amersham Round to Oval
Extending Dining Table**
With one central leaf (non storing)
Antique Walnut finish
30" H x 54" dia (opens to 54" x 74")



CG853A
Winchester Extending Dining Table
With two leaves (non storing)
Oak finish
30" H x 97.5" W x 42" D (extends to 137.5")

DINING TABLES & CHAIRS



CG853B
Winchester Extending Dining Table
With two leaves (non storing)
Thames Wash finish
30" H x 97.5" W x 42" D (extends to 137.5")

DINING TABLES & CHAIRS



CG756MO
Gothic Interlace
Windsor Side Chairs
Oak finish
38.75" H x 20" W x 17.5 D



CG757MO
Gothic Interlace
Windsor Arm Chairs
Oak finish
41.5" H x 21" W x 18.5" D



DINING TABLES & CHAIRS

DINING TABLES & CHAIRS



CG756A
Soft White paint finish



CG756D
Smoke paint finish



CG757A
Soft White paint finish



CG757D
Smoke paint finish

CG703MO
Irish Primitive
Windsor Side Chair
 Oak finish
 40" H x 20.5" W x 18" D



DINING TABLES & CHAIRS



CG702MO
Irish Primitive
Windsor Arm Chair
 Oak finish
 43" H x 25" W x 18" D



41" H x 22" W x 17" D

CG503
Yorkshire Ladderback Side Chair
 Rush seat, Oak finish

CG504
Yorkshire Ladderback Side Chair
 Upholstered seat, Oak finish

CG634
Yorkshire Ladderback Side Chair
 Rush seat, black paint finish

CG660
Yorkshire Ladderback Side Chair
 Upholstered seat, black paint finish

DINING TABLES & CHAIRS



41" H x 23" W x 17" D

CG505
Yorkshire Ladderback Arm Chair
 Rush seat, Oak finish

CG506
Yorkshire Ladderback Arm Chair
 Upholstered seat, Oak finish

CG635
Yorkshire Ladderback Arm Chair
 Rush seat, black paint finish

CG661
Yorkshire Ladderback Arm Chair
 Upholstered seat, black paint finish



Oak finish



Black finish



DINING TABLES & CHAIRS

41" H x 23" W x 17" D

CG787A

Yorkshire Ladderback Side Chair

Rush seat, Soft White paint finish

CG787B

Yorkshire Ladderback Side Chair

Rush seat, Smoke paint finish

CG789A

Yorkshire Ladderback Side Chair

Upholstered seat, Soft White paint finish

CG789B

Yorkshire Ladderback Side Chair

Upholstered seat, Smoke paint finish



DINING TABLES & CHAIRS

41" H x 23" W x 17" D

CG788A

Yorkshire Ladderback Arm Chair

Rush seat, Soft White paint finish

CG788B

Yorkshire Ladderback Arm Chair

Rush seat, Smoke paint finish

CG790A

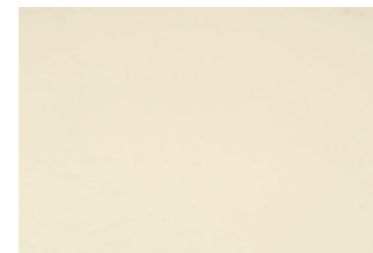
Yorkshire Ladderback Arm Chair

Upholstered seat, Soft White paint finish

CG790B

Yorkshire Ladderback Arm Chair

Upholstered seat, Smoke paint finish



Soft White paint finish



Smoke paint finish

CG793

Balustrade Side

Thames Wash finish

Supplied in neutral fabric

(COM available at additional charge)

43.5" H x 20" W x 21.5" D



DINING TABLES & CHAIRS

CG795

Balustrade Side

Oak finish

Supplied in neutral fabric

(COM available at additional charge)

43.5" H x 20" W x 21.5" D



DINING TABLES & CHAIRS

CG792

Balustrade Arm

Thames Wash finish

Supplied in neutral fabric

(COM available at additional charge)

48" H x 20" W x 21.5" D



CG794

Balustrade Arm

Oak finish

Supplied in neutral fabric

(COM available at additional charge)

48" H x 20" W x 21.5" D



CG797
Tuscany Side
Thames Wash finish
Supplied in neutral fabric
(COM available at additional charge)
41" H x 20" W x 21.5" D



CG799
Tuscany Side
Oak finish
Supplied in neutral fabric
(COM available at additional charge)
41" H x 20" W x 21.5" D



DINING TABLES & CHAIRS

DINING TABLES & CHAIRS



CG796
Tuscany Arm
Thames Wash finish
Supplied in neutral fabric
(COM available at additional charge)
46" H x 24" W x 21.5" D

CG798
Tuscany Arm
Oak finish
Supplied in neutral fabric
(COM available at additional charge)
46" H x 24" W x 21.5" D





CG837
Belgravia Side
With sabre leg, Antique Walnut finish
Supplied in neutral fabric
(COM available at additional charge)
35.5" H x 20" W x 24.5" D



CG838
Richmond Side
With turned leg, Oak finish
Supplied in neutral fabric
(COM available at additional charge)
35.5" H x 20" W x 24.5" D



OTTOMANS & BENCHES

CG704MO

REASSURRINGLY TRADITIONAL, OUR BENCHES AND OTTOMANS PROVIDE EXTRA SEATING WHEN YOU NEED IT. WHAT COULD BE NICER THAN AN OTTOMAN AT THE FOOT OF THE BED OR A PLACE TO REST YOUR FEET!



OTTOMANS & BENCHES

CG202B

CG196

Ottoman Bench

Barley Twist legs, neutral fabric seat,
Oak finish
18" H x 48" W x 17" D



OTTOMANS & BENCHES

CG202

Ottoman Stool

Barley Twist legs,
neutral fabric seat,
Oak finish
18" H x 17" W x 17" D



OTTOMANS & BENCHES



CG704MO

Irish Primitive Windsor Settle

Oak finish
42.5" H x 45.5" W x 18" D

CG342

Barley Twist Stool

With leather seat & studding,
Oak finish
19" H x 24" W x 18" D

(Please note that due to the nature of
leather hides, color may vary
from that shown)





CG196A

Ottoman Bench

Barley Twist legs, neutral fabric seat,
Soft White paint finish
18" H x 48" W x 17" D

OTTOMANS & BENCHES



CG202A

Ottoman Stool

Barley Twist legs, neutral seat,
Soft White paint finish
18" H x 17" W x 17" D

OTTOMANS & BENCHES



CG196B

Ottoman Bench

Barley Twist legs, neutral fabric seat,
Smoke paint finish
18" H x 48" W x 17" D

CG202B
Ottoman Stool
Barley Twist legs, neutral seat,
Smoke paint finish
18" H x 17" W x 17" D



OUR TRADITIONAL STOOLS PROVIDE A COMFY PLACE TO SIT AT THE BAR OR AT THE COUNTER IN THE KITCHEN.

BAR & COUNTER STOOLS

BAR & COUNTER STOOLS



CG682

CG687



CG080
Umber Splat
Bar Stool
Swivel seat, Cherry finish
42" H x 22" W x 22" D
Seat height 29"
Arm height 37"



CG227
Umber Splat
Counter Stool
Swivel seat, Cherry finish
37" H x 22" W x 22" D
Seat height 24"
Arm height 32"



CG679
Richmond
Counter Stool
Swivel leather seat,
Old Worlde finish
39" H x 22" W x 19" D
Seat height 24"
Arm height 31"



CG680
Richmond
Bar Stool
Swivel leather seat,
Old Worlde finish
43.5" H x 22" W x 19" D
Seat height 29"
Arm height 36"

BAR & COUNTER STOOLS

BAR & COUNTER STOOLS



CG687
Chesham Pub
Bar Stool
Swivel leather seat,
Old Worlde finish
30" H x 20" dia



CG688
Chesham Pub
Counter Stool
Swivel leather seat,
Old Worlde finish
24" H x 20" dia



CG681
Chiswick
Counter Stool
Swivel leather seat,
Old Worlde finish
42" H x 20.5" W x 19" D
Seat height 24"
Arm height 31"



CG682
Chiswick
Bar Stool
Swivel leather seat,
Old Worlde finish
46.5" H x 20.5" W x 19" D
Seat height 29"
Arm height 36"

POSSIBLY OUR HEAD DESIGNER'S FAVOURITE CATEGORY TO DESIGN, SO POSSIBLY THE REASON WHY WE HAVE SUCH AN AMAZING COLLECTION! WE HOPE THAT YOU ENJOY THEM AS MUCH AS WE DID DESIGNING THEM FOR YOU.



CG848

CONSOLES & DESKS

CONSOLES & DESKS

CG846



CG052
Bow End Hall Table
Antiqued Yew veneer
30" H x 41" W x 12" D



CG258
Bow Front Console
With 4 drawers,
Antiqued Yew veneer
34" H x 48" W x 16" D



CG240
Console Table
With serpentine top,
Antiqued Yew veneer
33" H x 44" W x 17" D



CG623
Narrow Console Table
With two drawers, Old Worlde finish
30" H x 40" W x 8" D



CG296
Turned Leg Console Table
With one Drawer & potboard base,
Oak finish with
Yew wood crossbanding
30" H x 36" W x 12" D



CG297
Turned Leg Console Table
With two Drawers & potboard base,
Oak finish with Yew wood crossbanding
30" H x 52" W x 12" D



CG624
Console Table
With two drawers,
Old Worlde finish
32" H x 36" W x 12" D

CONSOLES & DESKS

CONSOLES & DESKS



CG810
Kensington Console
London Night finish
32" H x 36" W x 12" D



CG723
Large Demi Lune
London Night finish
34" H x 48" W x 15" D

CONSOLES & DESKS



CG727
Console
With 4 drawers, London Night finish
32" H x 56" W x 16" D

CONSOLES & DESKS



CG730
Demi Lune
With 4 drawers,
London Night finish
31.75" H x 32" W x 15" D



CG474A
Long X-End Console
Soft White paint finish
32" H x 60" W x 15" D



CG474B
Long X-End Console
Smoke paint finish
32" H x 60" W x 15" D



CG474E
Long X-End Console
Cornish Blue paint finish
32" H x 60" W x 15" D



CG832A
Short X-End Console
Soft White paint finish
32" H x 42" W x 15" D



CG832B
Short X-End Console
Smoke paint finish
32" H x 42" W x 15" D



CG832E
Short X-End Console
Cornish Blue paint finish
32" H x 42" W x 15" D

CONSOLES & DESKS

CONSOLES & DESKS



CG826A
Scissor Console
With one Drawer
Soft White paint finish
30" H x 42" W x 15" D



CG827A
Long Scissor Console
With three Drawers
Soft White paint finish
30" H x 52" W x 15" D

CONSOLES & DESKS

CONSOLES & DESKS



CG826B
Scissor Console
With one Drawer
Smoke paint finish
30" H x 42" W x 15" D



CG827B
Long Scissor Console
With three Drawers
Smoke paint finish
30" H x 52" W x 15" D



CG841A
Screen End Large Low Console
Soft White paint finish
31" H x 70" W x 15" D



CG841B
Screen End Large Low Console
Smoke paint finish
31" H x 70" W x 15" D



CG841D
Screen End Large Low Console
Antique Walnut finish
31" H x 70" W x 15" D

CG842A
Screen End
Medium Low Console
Soft White paint finish
31" H x 54" W x 15" D



CG842B
Screen End
Medium Low Console
Smoke paint finish
31" H x 54" W x 15" D



CG842D
Screen End
Medium Low Console
Antique Walnut finish
31" H x 54" W x 15" D



CONSOLES & DESKS

CONSOLES & DESKS



CG848 open

CG848
Amersham Flip Top Console
Antique Walnut finish
30" H x 65" W x 20" D (Opens to 40")

CONSOLES & DESKS



London map lined drawers

CG258A
Four Drawer Console
London map lined drawers
Antique Walnut finish
34" H x 48" W x 16" D



CG851
Kensington Credenza
With two Doors
Antique Walnut finish
and Soft White interior
34" H x 39" W x 15" D



CONSOLES & DESKS



CG850
Kensington Credenza
With four Doors
Antique Walnut finish
and Soft White interior
34" H x 72" W x 18" D



CG724
Games Table
With aged leather top,
includes 4 'card/chip' drawers
with drinks coaster.
London Night finish
29.75" H x 36" W x 36" D"

CONSOLES & DESKS



CG845
Astro Desk Light
Limed Oak with Soft White paint top finish
29.75" H x 47.25" W x 27.25" D

CONSOLES & DESKS



CG847
Amersham Desk with three drawers
Antique Walnut finish with London map lined drawers
31" H x 54" W x 15" D



Detail: pencil grooves
CG846
Astro Desk Dark
London Night with Soft White paint top finish
29.75" H x 47.25" W x 27.25" D

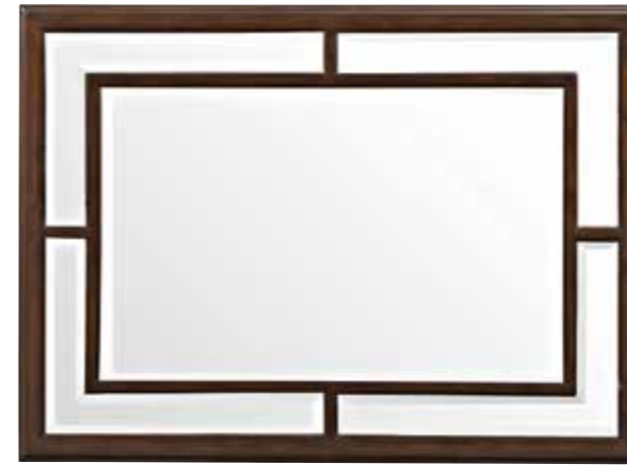


Choose from a selection of mirrors in varying shapes and finishes - a perfect addition to any room offering both traditional and more contemporary looks.

MIRRORS



CG541
The Sloane Arched Mirror
 Walnut finish
 45" H x 24.5" W

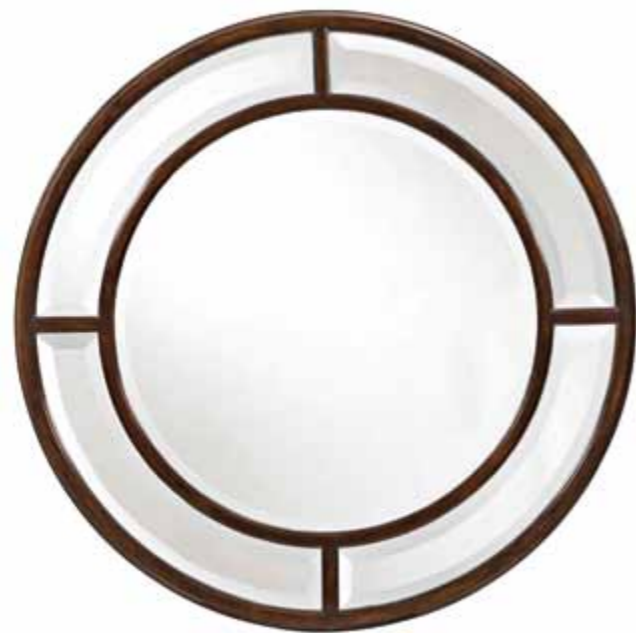


*  **CG775A**
The Highbury Rectangular Mirror
 London Night finish
 51" H x 37.5" W
 *can be hung landscape or portrait



*  **CG775D**
The Highbury Rectangular Mirror
 Soft White paint finish
 51" H x 37.5" W
 *can be hung landscape or portrait

MIRRORS



CG774A
The Highbury Round Mirror
 London Night finish
 42" dia



CG774D
The Highbury Round Mirror
 Soft White paint finish
 42" dia



CG776A
The Highbury Square Mirror
 London Night finish
 41.25" square



CG776D
The Highbury Square Mirror
 Soft White paint finish
 41.25" square



Avignon

Soft White



Antique Walnut

COUNTRY to CLASSIC



Cornish Blue



Cherry



Old Worlde
Perfect rustic



Smoke
Crisp and clean paint finish



Antique Walnut/Soft White
Elegant wood mixes with paint



Colors and Finishes

The Fauld Design Studio and our talented Workshop Colorists in England have created a versatile palette of textures and colors for the Cambridge Collection. We have perfected the classic woods you can rely on for traditional settings whilst developing new finishes for the latest trends in interiors.



Antique Walnut



Avignon



Black rub thru



Cherry



Antique Yew



London Grey



London Night



Medium Walnut



Oak



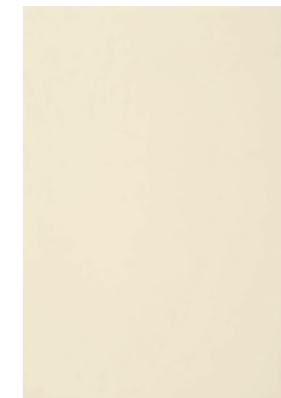
Old Worlde



Smoke



Cornish Blue



Soft White



Thames Wash

Please note that the color finishes are a guide only and should not be used as exact color matches.

Numerical Index

Code	Page	Code	Page	Code	Page	Code	Page
CG032	90	CG474B	124	CG756D	96	CG796	104
CG050	80	CG474E	124	CG756MO	96	CG797	104
CG052	120	CG482	86	CG757A	97	CG798	105
CG056	33	CG498	45	CG757D	97	CG799	105
CG070	30	CG503	99	CG757MO	97	CG800A	71
CG077	28	CG504	99	CG760	64	CG800B	71
CG078	28	CG505	99	CG761A	28	CG800E	72
CG079	28	CG506	99	CG761B	28	CG809	51
CG080	116	CG541	134	CG762	56	CG810	122
CG098	31	CG572B	69	CG763	56	CG813	51
CG099	31	CG584	46	CG764	54	CG814	69
CG100	31	CG586	46	CG765	91	CG816	50
CG101	31	CG589	47	CG774A	134	CG826A	126
CG113	32	CG591B	47	CG774D	134	CG826B	126
CG114	32	CG595	48	CG775A	135	CG827A	127
CG116	30	CG597	49	CG775D	135	CG827B	127
CG138	33	CG623	121	CG776A	135	CG828A	39
CG151	68	CG624	121	CG776D	135	CG828B	39
CG156	38	CG625	48	CG779D	29	CG830	93
CG156B	38	CG626	80	CG779E	29	CG832A	125
CG159	34	CG628	84	CG780D	57	CG832B	125
CG159B	34	CG629	85	CG780E	57	CG832E	125
CG175	41	CG632	85	CG781D	58	CG833	93
CG190	40	CG634	99	CG781E	58	CG836A	81
CG192	40	CG635	99	CG782A	86	CG836B	81
CG196	110	CG652	49	CG782B	87	CG837	106
CG196A	112	CG660	99	CG782E	87	CG838	107
CG196B	112	CG661	99	CG783A	35	CG839A	77
CG198	84	CG679	117	CG783B	35	CG839B	77
CG200	42	CG680	117	CG783E	35	CG839D	77
CG202	111	CG681	117	CG784A	37	CG840A	72
CG202A	113	CG682	117	CG784B	37	CG840B	73
CG202B	113	CG687	116	CG784E	36	CG840D	73
CG205	42	CG688	116	CG785A	61	CG841A	128
CG227	116	CG702MO	98	CG785B	61	CG841B	128
CG238	43	CG703MO	98	CG786A	55	CG841D	128
CG240	120	CG704MO	110	CG786B	55	CG842A	129
CG258	121	CG713	50	CG787A	100	CG842B	129
CG258A	130	CG716	60	CG787B	100	CG842D	129
CG275	68	CG717	91	CG788A	101	CG843A	63
CG296	120	CG721	59	CG788B	101	CG843B	63
CG297	120	CG723	123	CG789A	100	CG843D	62
CG307	65	CG724	132	CG789B	100	CG844	76
CG342	111	CG726	52	CG790A	101	CG845	133
CG400	44	CG727	122	CG790B	101	CG846	133
CG402	45	CG728	53	CG791C	92	CG847	132
CG471	70	CG729	53	CG791D	92	CG848	130
CG471A	70	CG730	123	CG792	102	CG849	65
CG471B	70	CG731	64	CG793	102	CG850	131
CG472	36	CG749	90	CG794	103	CG851	131
CG474A	124	CG756A	96	CG795	103	CG853A	94
						CG853B	95

The Cambridge Collection

Fauld England
 PO BOX 5335
 High Point
 NC 27262
 Tel: 800 993 2853 / 336 434 3460
 Fax: 336 434 4059
 www.fauld.com

Terms and Conditions

Order acknowledgement:

The written order acknowledgement is the agreement between the client and Fauld. Prices are to point of container unpack (which shall be at the Company's discretion). Prices do not include freight, delivery, installation or storage or additional cartoning / packing other than that supplied.

Delivery:

Acceptance by common carrier constitutes delivery. Preferred shippers may be nominated. Shipments can be made only to regular places of business. Carriers will not perform retail services such as unpacking, disposal of packaging, or placing of furniture. Carriers may require pre-payment for freight. Orders will be shipped as ready unless prior request is made. Deliveries are contingent on conditions beyond our control and proposed shipping dates are an estimate only. Orders cannot be cancelled/ amended once they have been scheduled for shipment. Please note that all claims for damages in shipping must be made direct to the carrier.

Payment:

Terms of payment are as specified at the point of sale or as agreed with order. Orders are placed on a Pro Forma basis or 50% deposit with the order with the balance payable before shipment. The Company reserves the right to charge interest on overdue accounts at the rate of 4% per month (or part month). Clients with open account status shall be liable for all reasonable collection costs, including, but not limited to, attorney fees, in the case of delinquent accounts. Title of goods will not pass to the purchaser until payment in full has been received.

Products:

The company reserves the right to alter design / specifications or prices without prior notice. It should be noted that wooden furniture needs to be kept in a stable environment particularly humidity.

All Cambridge products are produced to Fauld's high standards. Owing to the hand crafted nature of the products sizes and finishes may vary on occasions.

Please note that the color finishes shown are a guide only and should not be used as exact color matches. Color chips are available on request but should be used as a guide only.

Copyright © Fauld England, 2015

PO BOX 5335, HIGH POINT, NC 27262
TEL: 800 993 2853 FAX: 336 434 4059
sales@fauld.com www.fauld.com