

The Waterlow

The Waterlow, Ainsley/Wilmot/Corfield Street
Bethnal Green, London E2

TELEPHONE: 01-729 1163



BARRATT



BARRATT IN E2

No area of London is richer in human or historical associations than Bethnal Green in the centre of which is found The Waterlow.

Thriving street markets like Petticoat Lane and Roman Road are a rich source of bargains and the opportunity to join in an East End that has remained unchanged for centuries, is part of the charm of this area of London.

The area has always been a shifting kaleidoscope of people from the time when the Romans built the first roads from London and appropriately enough Roman Road is just around the corner.

The Waterlow itself was originally an area settled by Huguenot Silk Weavers fleeing from persecution in France and for a long time Bethnal Green and Spitalfields to the south were famous for the quality of their woven silk.

Making homes for modern living, without losing the essential character of the area is something in which Barratt East London have developed a great deal of skill over the years and nowhere is this more evident than at The Waterlow.

All the properties have been modernised and refurbished to high standards and a park within The Waterlow will be landscaped to provide a pleasant environment for all the residents.

Travel Information

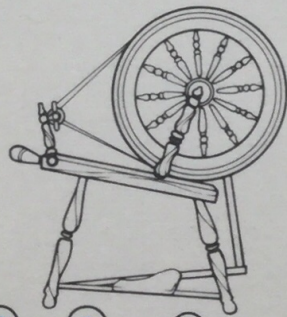
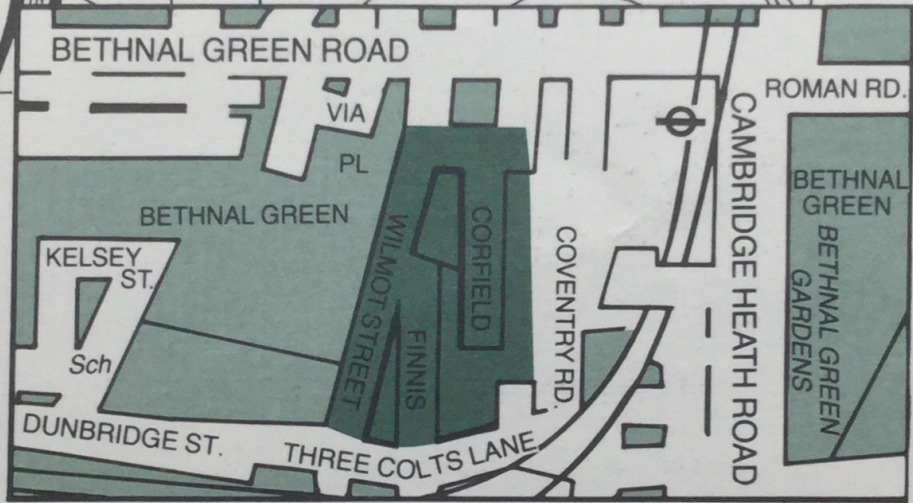
The Waterlow is situated just off the Roman Road and a stones throw from both Bethnal Green Underground and the main line station of Liverpool Street.

On the Underground it is no more than five minutes to the City and fifteen to London's West End with its shopping, theatres and restaurants.

In the other direction, easy access to the Rotherhithe and Blackwall Tunnels means that the South Coast Motorways and the Channel Ports are within easy reach.



BARRATT



The Waterlow

We take every care to ensure that the information shown on this leaflet is correct. We hope you find it helpful however, complete accuracy is not guaranteed and the information is expressly excluded from any contract. We reserve the right to change the specification or design of units should circumstances make this necessary.

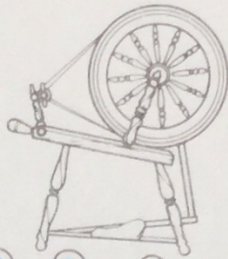


BARRATT



Barratt East London Ltd
Warton House, 150 High Street, Stratford,
London. E15 2NE
Telephone: 01-519 2337
Published November 1986

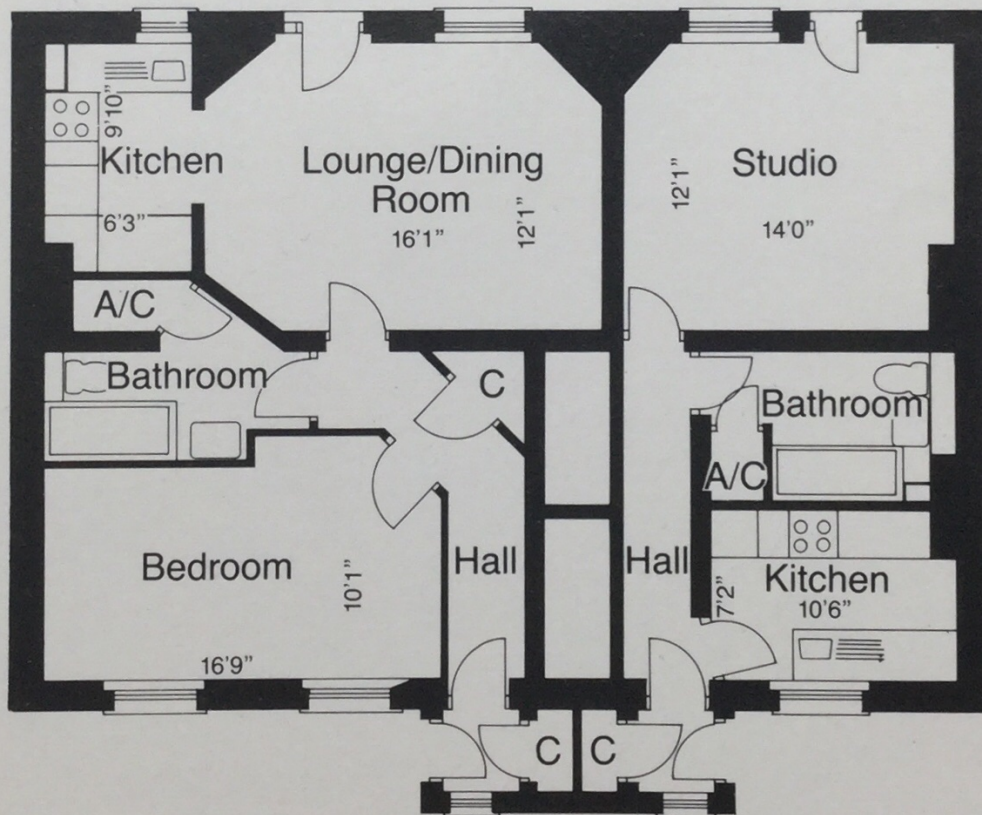




The Waterlow



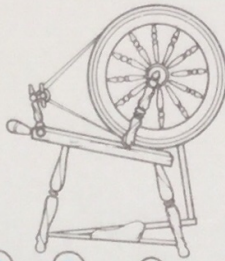
A typical floor plan of staircase F(19,20)
(Basement only)



We take every care to ensure that the information shown on this leaflet is correct. We hope you find it helpful, however, complete accuracy is not guaranteed and the information is expressly excluded from any contract. We reserve the right to change the specification or design of units should circumstances make this necessary.



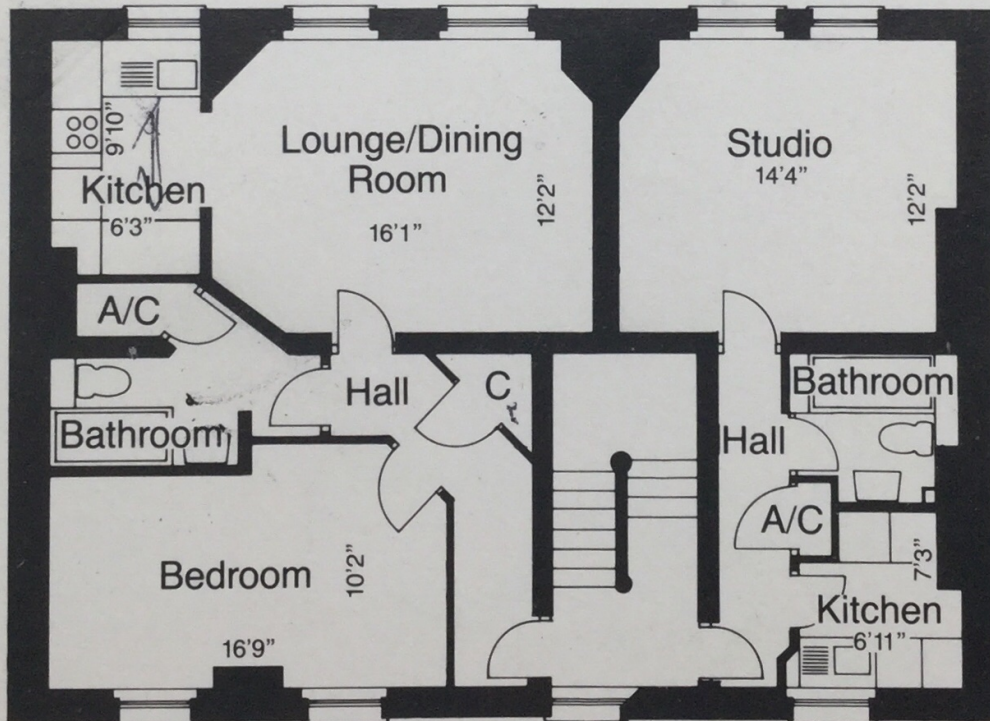
BARRATT



The Waterlow



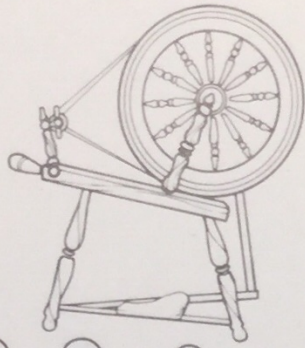
A typical floor plan of staircase F(19,20)
(other than the Basement)



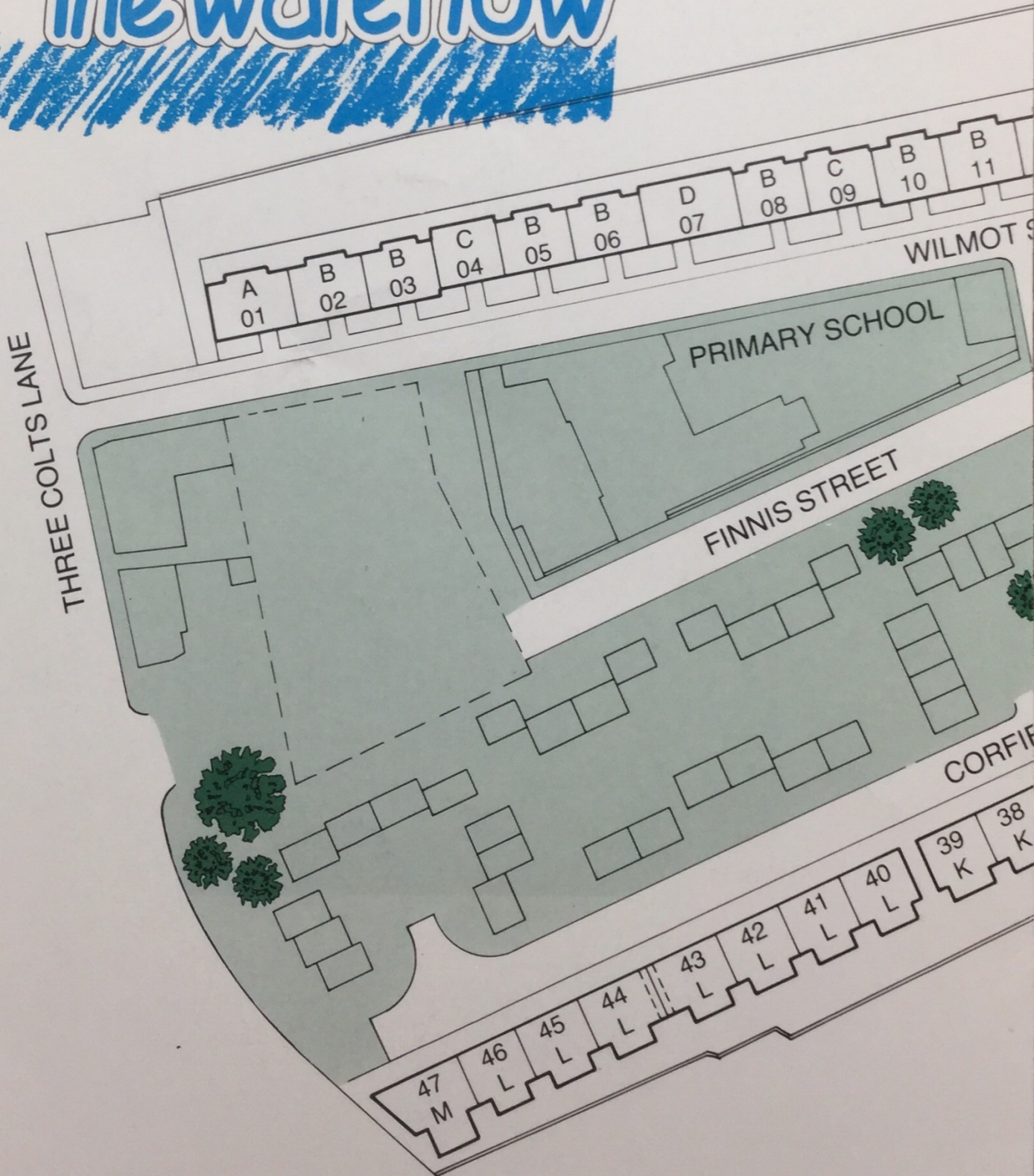
We take every care to ensure that the information shown on this leaflet is correct. We hope you find it helpful, however, complete accuracy is not guaranteed and the information is expressly excluded from any contract. We reserve the right to change the specification or design of units should circumstances make this necessary.



BARRATT



The Waterlow



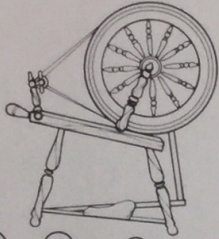
The letters indicate the types of properties available within each staircase.



We take every care to ensure that the information shown on this leaflet is correct. We hope you find it helpful, however, complete accuracy is not guaranteed and the information is expressly excluded from any contract. We reserve the right to change the specification or design of units should circumstances make this necessary.

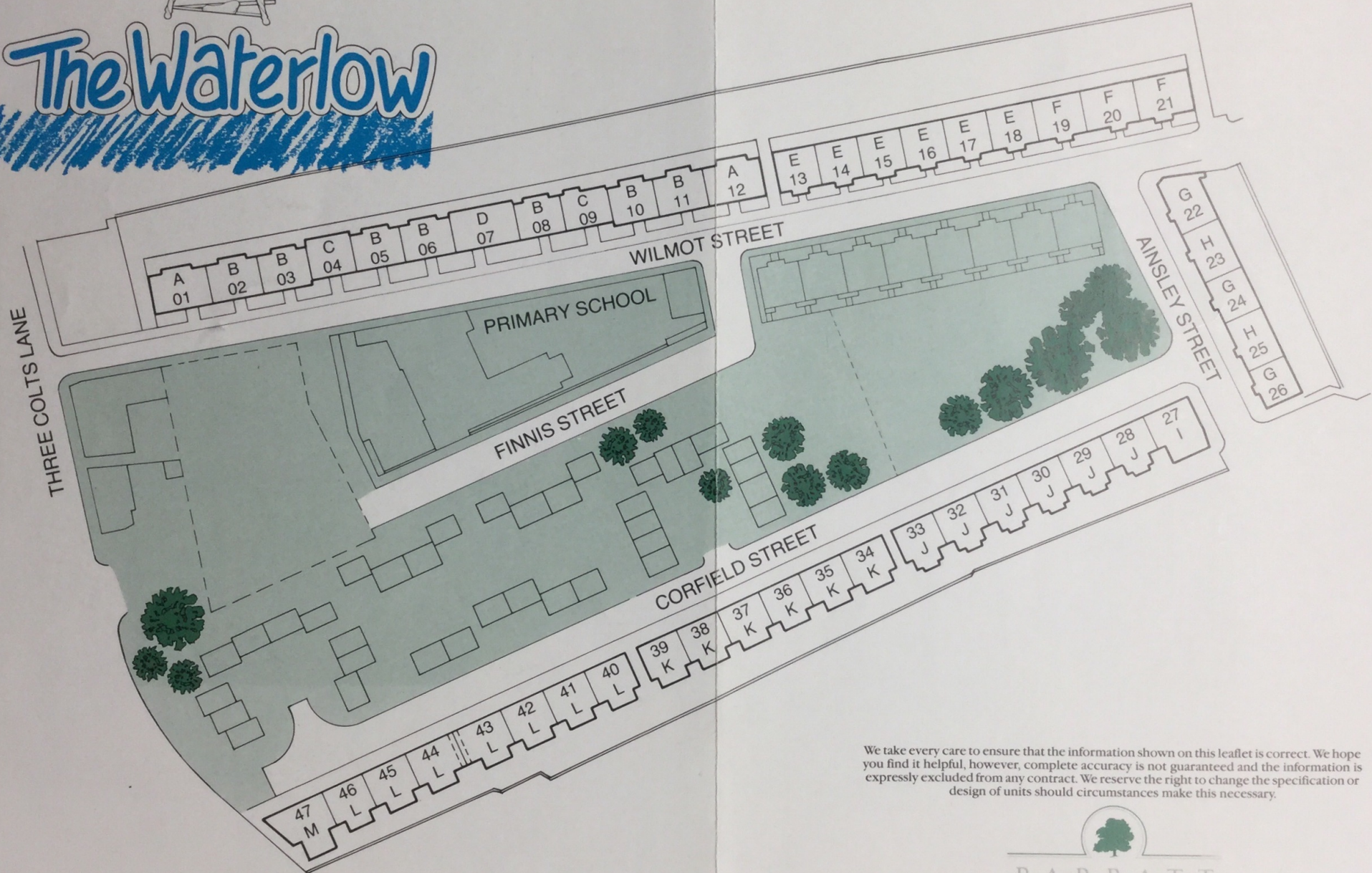


BARRATT



The Waterlow

The letters indicate the types of properties available within each staircase.



We take every care to ensure that the information shown on this leaflet is correct. We hope you find it helpful, however, complete accuracy is not guaranteed and the information is expressly excluded from any contract. We reserve the right to change the specification or design of units should circumstances make this necessary.

