



Sanitaryware Brochure

2018-2019.

WC Pans.



Vitra Arkitekter Back-to-Wall WC Pan

Code: 6875

Height: 390mm high standard adult height



Vitra Milton Close-Coupled WC Pan Pack

Code: 5111

400mm high standard adult height



Wall-Hung WC Pan Pack—School

Code: SC 350

- 350mm high rimless infant pan
- Pack also includes:
- 1x Concealed 6 litre push-button cistern
 - 1x SC series toilet seat with heavy duty metal hinges



BTW WC Pan Pack—School

Code: SC 300

- 300mm high rimless infant pan
- Pack also includes:
- 1x Concealed 6 litre push-button cistern
 - 1x SC series toilet seat with heavy duty metal hinges

Compatible products.



Standard Toilet Seat

Code: 115-003-001

Soft Close:

Code: 84-003-019



Dudley Pneumatic W/C Flush

Code: PSPLER324379

Urinals.



Arkitekter Urinal with Concealed Trap

Code: 4319

Dimensions: 700 (H) x 410 (W) x 300 (PROJECTION)



Vitra U1 Urinal Kit

Code: 6564

Dimensions: 500 (H) x 390 (W) x 300 (PROJECTION)



Exposed Urinal Cistern

Code: 6954

Dimensions: 475(w) x 265 (H) x 225 (D)



UC1 Urinal Cistern

Concealed auto flush cistern for urinals

Detail:

- 505mm (W) x 285mm (H) x 146mm (D)
- Outlet centre 73mm from wall
- Supplied with automatic syphon and petcock

Shower accessories.



Movatrack Curtain

Hooks on rollers

Code: 110/5

Code: 110/5



White Shower Curtain

Dimensions: 1800 x 1800

Delabie SPORTING 2 shower panel

Code: 714700

Time flow shower panel:

Anodised aluminium and satin chrome finish panel.

Adjustable connector for top or back inlet.

Slimline structure with concealed fixings.

Soft-touch operation.

Automatic mechanical flush with every use.

Time flow ~30 seconds.

Flow rate 6 lpm at 3 bar.

Tamperproof fixed shower head, with scale-resistant nozzle and automatic flow

rate regulation.

Adjustable spray angle can be locked in place.

Non-return valve and filter are accessible.

Integrated stopcock.

M1/2" connection for mixed water supply.

10-year warranty.



Sinks.



Vitra S20 Oval Inset Basin

Code: 5467

Dimensions: 48cm wide

One tap hole only



S20 Square Inset Basin

Code: 5463

Dimensions: 45cm wide

One tap hole only



Vitra S20 Semi-Recessed Basin

Code: 5521

Dimensions: 45 cm wide

One tap hole only



Vitra N12 Arkitekt Compact Washbasin

Code: 5078

Dimensions: 45cm (W) x 360 (D) x 190 (H)

One tap hole only



Cleaners Sink

Code: 6109

Dimensions: 430 (W) x 310 (D) x 265 (H)

Grate Included

Taps.



Delabie Mechanical Basin Mixer

Code: 2221

H. 40mm L. 115mm sculptured control level with hygienic flow straightener.

Ø 40mm ceramic cartridge.

Pre-set maximum temperature limiter.

Flow rate limited to 5 lpm at 3 bar.



Delabie Wall Mount Sink Mixer

Code: 5445T25

Ceramic Value Heads

Spout with smooth interior



Delabie TEMPOSTOP Deck-mounted time flow basin tap:

Code: 745301

Time flow ~7 seconds.

Flow rate pre-set at 3 lpm at 3 bar, can be adjusted from 1.5 to 6 lpm.

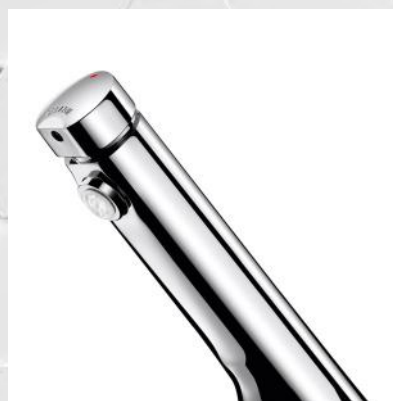
Tamperproof scale-resistant flow straightener.

Solid chrome-plated brass body M1/2".

Reinforced fixing by 3 stainless steel screws.

AB anti-blocking system: water will flow only when the push-button is released.

T.M.V is required for mixing



Delabie TEMPOSOFT 2 time flow tap

Product Reference: 740500

Deck-mounted time flow basin tap:

Soft-touch operation.

Time flow ~7 seconds.

Flow rate pre-set at 3 lpm at 3 bar, can be adjusted from 1.5 to 6 lpm.

Tamperproof scale-resistant flow straightener.

Solid chrome-plated brass body M1/2".

Fixing with back-nut.

Supplied with red and blue markers.

T.M.V recommended



Delabie Tempomatic 4

Code: 44000615

Deck-mounted electronic basin tap

6 Volt battery operated

Reduced stagnation solenoid valve and electronic unit integrated into the body of the tap.

Flow rate pre-set at 3 lpm at 3 bar, can be adjusted from 1.5-6 lpm.

Scale-resistant flow straightener.

Duty Flush (~60 seconds every 24 hours after last use)

Active infrared presence detection, sensor at the end of the spout optimises detection.

Chrome-plated solid brass body

Cap fixed in place by two concealed screws

PEX flexible Ø 15mm for compression fittings with stopcock, filter and non-return valve.

Fixing reinforced by two stainless steel rods

Anti-blocking security

T.M.V recommended



Delabie TEMPOMIX 3 Basin Mixer

Product Reference: 79400015

Deck-mounted time flow basin tap:

Soft-touch operation.

Time flow ~7 seconds.

Flow rate pre-set at 3 lpm at 3 bar, can be adjusted from 1.5 to 6 lpm.

Tamperproof scale-resistant flow straightener.

Solid chrome-plated brass body M1/2".

Fixing with back-nut.

Supplied with red and blue markers.

T.M.V recommended

Accessories.



Liquid Soap Dispenser

Code: PL20LMBS

900ml

Brushed Stainless

258mm (H) 108mm (W) 91mm (D)



Hand Towel Dispenser

Code: PL30MBS (small)

215mm (H) 262mm (W) 128mm (D)

Brushed stainless

Hand Towel Dispenser

Code: PL21 MBS (large)

300mm (H) 262mm (W) 128mm (D)



Jumbo Toilet Roll Holder

Code: PLH 40 MBS 10"

Diameter 250mm 120mm (D)

Brushed Stainless

Jumbo Toilet Roll Holder

Code: 41 MBS 12"

Diameter 320mm (D)

Brushed Stainless



Toilet Roll Holder

Code: BC 721

Brushed Stainless



Liquid Soap Dispenser

Code: PL10 PWB 400ml

190 (H) 90 (W) 98 (D)

190 (H) 90 (W) 98 (D)

White Plastic



Hand Towel Dispenser

CODE: PL30 PWB small

265 (H) 290 (W) 145 (D)

Hand Towel Dispenser

Code: pl31 PWB large

425 (H) 290 (W) 145 (D)

White Plastic



Toilet Towel Dispenser

Code: PL40 PWB jumbo dispenser
257 (H) 220 (W) 145 (D)

White Plastic

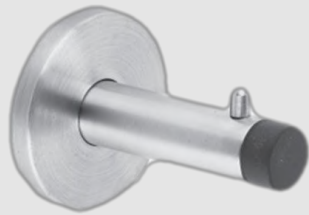


Std Toilet Roll Holder

Finish: PAA

Security fixing to remove toilet roll

Accessories.



Coat Hook & Buffer

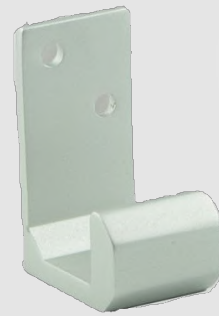
Code: T500

Finish: Brushed Stainless Steel

Projection 90mm

Code: T501

Projection 65 mm



Coat Hook

Code: SPLASH

Finish: PAA



Baby Minder Changing Unit

Dimensions: 812 (W) 510 (H) 102(CLOSED)

513 (OPEN)

Colour: White

Vertical Unit (hinged on end) also available



Grab rails

35mm diameter tube, concealed fixings

Choice of lengths and configurations

Doc M Compliant

MAX rated Load: 185 kg



Grab Rail Fixings

M5 Blind T Nuts

C/S Machine Screws

Vitra DOC-M low-level

Code: SN03

Pack Includes:

- 1x high raised low-level WC
- 1x toilet seat-ring
- 1x low-level cistern
- 1x low-level fitting pack with espaculate lever
- 1x 45cm washbasin
- 1x lever action spray mixer
- 5x 60cm grabrails (blue)
- 1x hinged rail (blue)
- 1x padded back rest
- 1x chrome waste
- 1x tap-hole stopper
- 1x bottle trap



Accessibility sundries:

- Ambulant WC cubicle grab-rail pack - 4x60cm blue grabrails
- Grabrail fixings kit for 13mm panels (S/S bolt - thru)
- Grabrail fixings kit for 18mm panels (S/S bolt - thru)

Contact us today

to discuss your **Washroom Requirements**

 01603 424855

 info@dunhamswashrooms.com

 Stock range for fast dispatch

 Compatible with **Dunhams Duct Systems**