



Luggage Racks

STEEL | STAINLESS STEEL | WOOD



STEEL LUGGAGE RACKS

Constructed out of durable steel or tube. These racks are offered in several sizes, with or without bumpered back bar and are available in six standard finishes. Stainless steel models come standard with a brushed finish.

Crimped and formed ends. No protruding tube ends to gouge walls.



Bumpered back bar to protect walls.



Strap ends have galvanized steel clips that are crimped, glued and attached with screws to the steel tube.



Steel rivets at pivot points provide a more durable connection than other types of hardware.



Standard Strap Colors



Strap Upgrades



Chrome available on 800 Model only



Model 800

Steel luggage rack

Round tube design

Bumpered back bar

	Depth	Width	Height
in:	21	24	24.5
cm:	54	61	63



Model 801

Steel luggage rack

Round tube design

	Depth	Width	Height
in:	18	24	20.5
cm:	46	61	53



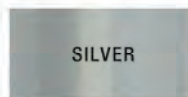
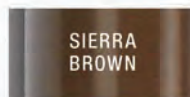
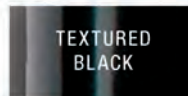
Model 803

Extra wide steel luggage rack

Round tube design

	Depth	Width	Height
in:	18	30	20.5
cm:	46	77	53

Standard Tube Finishes



Model 807

Extra wide & tall steel luggage rack

Round tube design

Bumpered back bar

	Depth	Width	Height
in:	23	30	31.5
cm:	59	77	81



New Rectangle Crossbar Design



Model 804-EN

Steel luggage rack

Rectangular /Square tube combo design

Black powder epoxy finish

	Depth	Width	Height
in:	24.5	16	21
cm:	62	41	54

Model 804-SS

Stainless Steel luggage rack

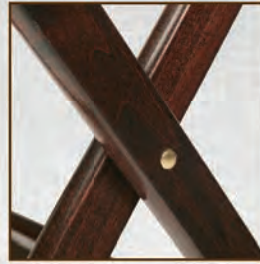
Rectangular/Square tube combo design

Brushed stainless steel finish

	Depth	Width	Height
in:	24.5	16	21
cm:	62	41	54

WOOD LUGGAGE RACKS

Forbes wood luggage racks are available in straight or contoured legs and offer an upscale choice that accommodates a wide variety of decors.



The combination of compression resistant hardwood, steel rivets at pivot points and lower cross braces provide a more durable rack able to handle heavy loads.



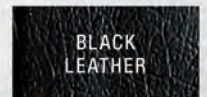
Bumpered back bar protects walls.



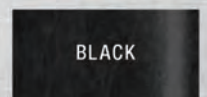
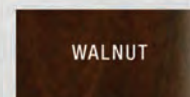
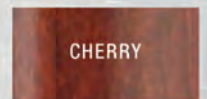
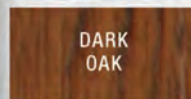
Standard Strap Colors



Strap Upgrades



Wood Finishes





Model 902

Hardwood luggage rack

Contoured leg design

Bumpered back bar

	Depth	Width	Height
in:	20	24	26.5
cm:	51	61	68



Model 904

Hardwood luggage rack

Contoured leg design

	Depth	Width	Height
in:	19	24	22
cm:	49	61	56



Model 906

Hardwood luggage rack

Contoured leg design

Bumpered back bar & back straps

	Depth	Width	Height
in:	20	24	26.5
cm:	51	61	68



Model 932

Hardwood luggage rack

Straight leg design

Bumpered back bar

	Depth	Width	Height
in:	18.5	24	23
cm:	47	61	59



Model 934

Hardwood luggage rack

Straight leg design

	Depth	Width	Height
in:	15.5	24	20.5
cm:	40	61	53