



**SPECIALISED MATERIALS HANDLING AND LIFTING EQUIPMENT**



# CONTENTS



## 1 INTRODUCTION



## 2-15 OVERHEAD LIFTING (VACUUM & MECHANICAL GRIPPERS & TUBE LIFTERS)



## 16-23 CRANES (LIGHTWEIGHT GANTRY SYSTEMS, JIB ARMS & PORTABLE CRANES)



## 24-31 MOBILE LIFT TROLLEYS (LIFT & DRIVE WORK POSITIONERS & STAINLESS STEEL CLEANROOM LIFT TROLLEYS)



## 32-34 SPECIAL STACKERS & DRUM TRUCKS (LIFT / ROTATE / MIX / TRANSPORT)



## 35-38 SCISSOR LIFT TABLES (STATIC & MOBILE SCISSOR LIFT TABLES)



## 39-44 ELECTRIC VEHICLES (TOW / LOAD / PERSONNEL CARRIERS)



## 45-48 PALLET TRUCKS & STACKERS (PALLET HANDLING SOLUTIONS)



## 49 MANUAL HANDLING GUIDELINES (HANDLE WITH CARE)

## DEAR CUSTOMER

Welcome to our new catalogue. We trust that you will find the information and products of interest to you.

**Lift Rite Ltd.** specialises in the supply of materials handling and lifting equipment to industries as wide ranging and diverse as Electronic, Computer, Pharmaceutical, Medical Devices, Food, Beverage Manufacturing and Distribution. Our business success is based on the supply of Reliable, High Quality, Safe and User Friendly Equipment at a competitive price. We provide an excellent after sales service which enables **Lift Rite Ltd.** to offer the complete solution for your Lifting and Handling requirements.

Our company has over 25 years experience in providing solutions to reduce or eliminate the necessity for Manual Handling. With this wealth of practical experience, a unique product range, an honest, no nonsense approach and the backing of a dedicated team of professionals ensures **Lift Rite Ltd.** is well placed to offer the right Materials Handling Solution to any industry. All equipment is **CE Marked** and comes with the required documentation.

## OUR OBJECTIVES

- To anticipate and meet our customers requirements at all times.
- Help them comply with the current Health and Safety Authority Manual Handling Regulations.
- To provide a solution that is Safe, Efficient and Cost Effective.
- To treat every Customer with the same honesty and attention to detail.
- To be recognised as the market leader in providing Quality Materials Handling Solutions.

## TO CONTACT US:

Phone: 01 601 6106  
Fax: 01 601 6109  
Email: [info@liftrite.ie](mailto:info@liftrite.ie)  
Web: [www.liftrite.ie](http://www.liftrite.ie)

We accept all major Credit Cards



## BAL - TROL PNEUMATIC LIFTING



■ STAINLESS STEEL VACUUM DRUM ROTATOR

### OPTIONS

- MECHANICAL OR VACUUM GRIPPING TOOLS
- SPECIALIST DESIGN SERVICE AVAILABLE
- ROTATE OR TILT THE LOAD
- STANDARD ATTACHMENTS AVAILABLE
- BOXES, SACKS, DRUMS, SHEETS ETC
- INDOOR OR OUTDOOR USE
- ERGONOMICALLY DESIGNED HANDLE
- EX RATING OR ATEX COMPLIANT ON REQUEST

### KEY FEATURES

- CAPACITIES FROM 2 KG UP TO 1000 KG
- EASY TO USE AND OPERATE / ERGONOMICALLY DESIGNED
- LOAD AND LIFT IN A SINGLE, SMOOTH OPERATION ADJUSTABLE SPEED
- CUSTOM MADE GRIPPERS TO LIFT ALMOST ANY OBJECT
- DRIVEN BY CLEAN DRY COMPRESSED AIR 6)BAR, ECONOMICAL AIR USAGE
- LOW CONSUMPTION OF AIR FOR QUIET OPERATION
- UNIQUE CONTROL SYSTEM / OBJECTS APPEAR WEIGHTLESS
- MOUNTED ON ALUMINIUM JIB ARMS OR GANTRY SYSTEMS
- ALL EQUIPMENT CE MARKED



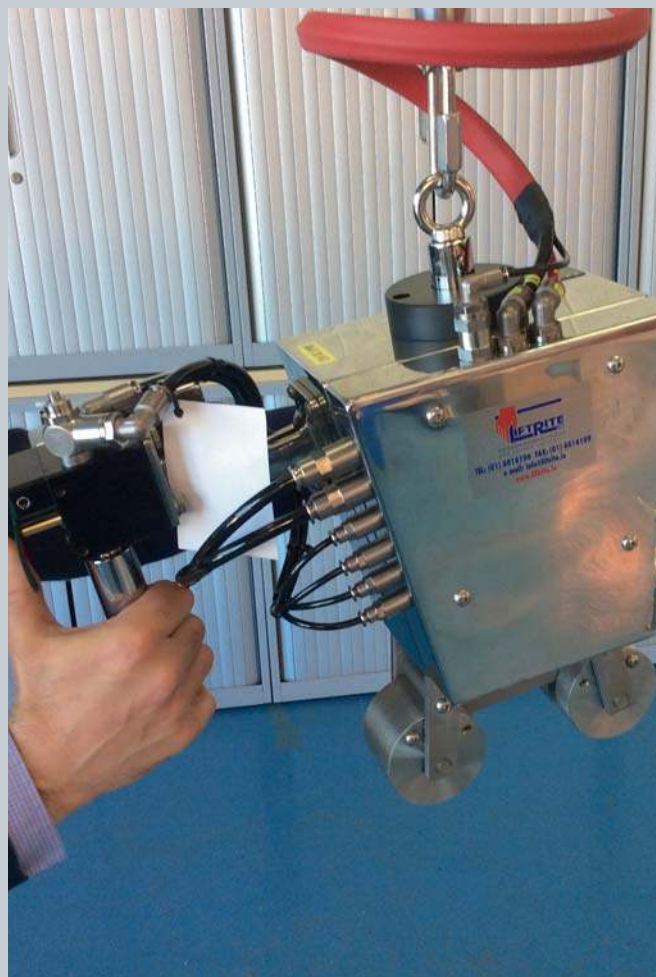
■ STAINLESS STEEL VACUUM DRUM GRIPPER



## EXAMPLES OF STANDARD BAG & SACK GRIPPERS



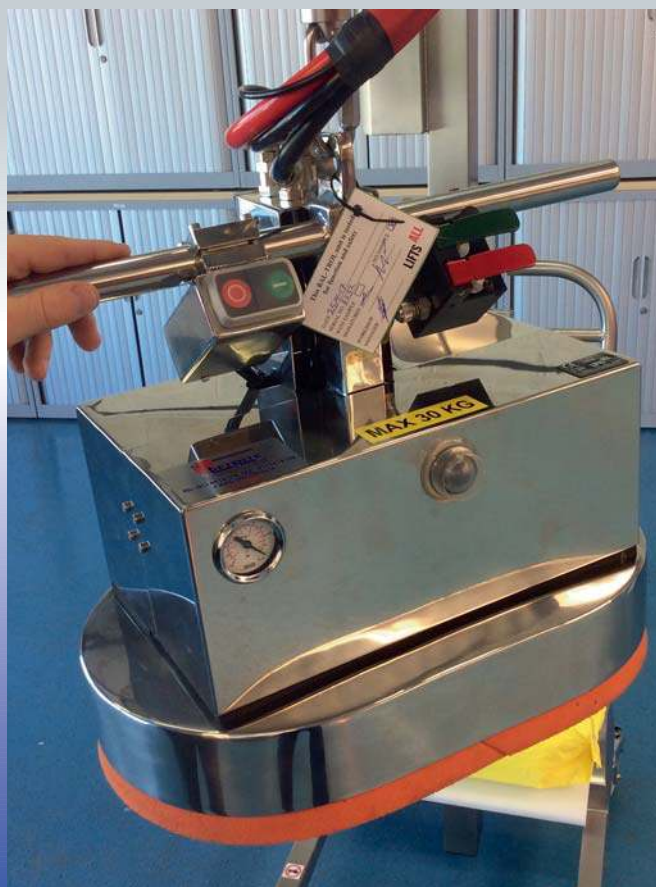
■ MECHANICAL SACK GRIPPER



■ STAINLESS STEEL MECHANICAL SACK GRIPPER



■ VACUUM SACK GRIPPER



■ STAINLESS STEEL VACUUM SACK GRIPPER



## EXAMPLES OF DRUM GRIPPERS



■ DRUM ROTATOR



■ DRUM ROTATOR



■ DRUM ROTATOR



■ DRUM ROTATOR

## EXAMPLES OF DRUM GRIPPERS



■ STAINLESS STEEL VACUUM GRIPPER



■ HIGH QUALITY STAINLESS GMP FINISH



■ GRIPPER TO LIFT & ROTATE



■ STAINLESS STEEL DRUM ROTATOR



■ STAINLESS STEEL DRUM ROTATOR



■ MECHANICAL DRUM GRIPPER



■ MECHANICAL GRIPPER FOR MULTIPLE DRUMS



■ STAINLESS MECHANICAL GRIPPER



## EXAMPLES OF DRUM GRIPPERS



■ HOOK ATTACHMENT FOR DRUMS & KEGS



■ VACUUM GRIPPER FOR DRUMS



■ VACUUM GRIPPER FOR DRUMS - GRIPPING FROM TOP



■ VACUUM GRIPPER FOR DRUMS - GRIPPING FROM SIDE

## EXAMPLES OF CARTON BOX GRIPPERS



■ GRIPPER FOR LARGE CARTON BOXES



■ STAINLESS STEEL GRIPPER FOR BOXES



■ VACUUM GRIPPER FOR CARTON BOXES



■ STAINLESS STEEL GRIPPER FOR BOXES



## EXAMPLES OF REEL GRIPPERS



■ REEL GRIPPER - PNEUMATIC EXPANDER 90 DEGREE TILT



■ REEL GRIPPER - PNEUMATIC EXPANDER 90 DEGREE TILT



■ REEL GRIPPER - PNEUMATIC EXPANDER 90 DEGREE TILT



■ REEL GRIPPER - PNEUMATIC EXPANDER 90 DEGREE TILT

## EXAMPLES OF REEL GRIPPERS



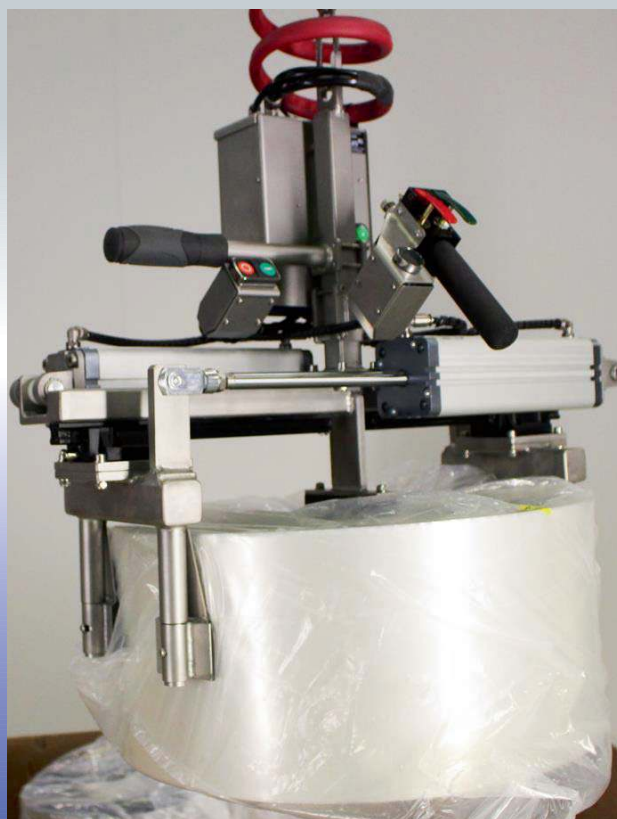
■ REEL GRIPPER - PNEUMATIC EXPANDER 90 DEGREE TILT



■ REEL GRIPPER - PNEUMATIC EXPANDER



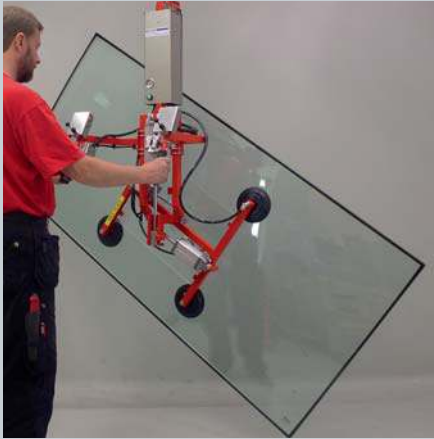
■ REEL GRIPPER - PNEUMATIC EXPANDER 90 DEGREE TILT



■ REEL GRIPPER - PNEUMATIC MECHANICAL CLAMP



## EXAMPLES OF VACUUM GRIPPERS FOR GLASS, STEEL & TIMBER SHEETS



■ VACUUM GRIPPER FOR GLASS



■ VACUUM GRIPPER FOR GLASS



■ VACUUM GRIPPER FOR GLASS



■ VACUUM GRIPPER FOR SHEETS



■ VACUUM GRIPPER FOR DOORS



■ VACUUM GRIPPER FOR SHEETS



■ VACUUM GRIPPER DOORS WITH 90° TILT

## EXAMPLES OF GRIPPERS FOR SERVERS & ELECTRICAL COMPONENTS



■ VACUUM GRIPPER FOR SERVER CHASSIS



■ VACUUM GRIPPER FOR SMALL SERVERS



■ MECHANICAL GRIPPER FOR BATTERIES



■ MECHANICAL GRIPPER FOR BATTERIES





## KEY FEATURES

- CAPACITIES FROM 5 KG UP TO 200 KG
- EASY TO USE AND OPERATE ERGONOMICALLY DESIGNED
- LOAD AND LIFT IN A SINGLE, SMOOTH OPERATION / ADJUSTABLE SPEED
- CUSTOM MADE GRIPPERS TO LIFT ALMOST ANY OBJECT
- VACUUM PUMP OPTIONS - ELECTRIC OR PNEUMATIC
- UNIQUE CONTROL SYSTEM OBJECTS APPEAR WEIGHTLESS
- MOUNTED ON ALUMINIUM JIB ARMS OR GANTRY SYSTEMS
- ALL EQUIPMENT CE MARKED

## OPTIONS

- MECHANICAL OR VACUUM GRIPPING TOOLS
- SPECIALIST DESIGN SERVICE AVAILABLE
- ROTATE OR TILT THE LOAD
- STANDARD ATTACHMENTS AVAILABLE
- BOXES, SACKS, SHEETS, DRUMS ETC
- INDOOR OR OUTDOOR USE
- ERGONOMICALLY DESIGNED HANDLE
- EX RATING OR ATEX COMPLIANT ON REQUEST





## EXAMPLES OF STANDARD TUBE LIFTERS



■ BAGGAGE LIFTER



■ GLASS SHEET LIFTER



■ DOOR LIFTER



■ BAG / SACK LIFTER ON ALUMINIUM ARM



■ KEG LIFTER



■ REEL LIFTER



■ LOW HEADROOM TUBE



■ STONE / BRICK LIFTER



■ BAG / SACK LIFTER



## EXAMPLES OF STANDARD TUBE LIFTERS



■ VACUUM LIFT FOR BAGGAGE



■ VACUUM LIFT FOR BOXES



■ LIFTER FOR BLOCKS OF CHEESE



■ LIFTER FOR LARGE BOXES



## EXAMPLES OF STANDARD TUBE LIFTERS



■ DRUM LIFTER



■ BAG / SACK LIFTER



■ VACUUM PACKED BLOCK LIFTER



■ CARTON BOX LIFTER

## LIGHTWEIGHT GANTRY & JIB CRANES

### KEY FEATURES

- FIXED OR PORTABLE
- ALUMINIUM GANTRY SYSTEMS
- FIXED JIB CRANES
- ARTICULATED JIB CRANES
- STAINLESS STEEL & ATEX RATED
- EASY TO OPERATE
- MANUAL / AIR / ELECTRIC
- ECONOMICAL AIR CONSUMPTION
- SILENT RUNNING
- ADJUSTABLE SPEED OF LIFT
- EXTENSIVE SAFETY FEATURES
- ERGONOMIC CONTROLS
- CE MARKED

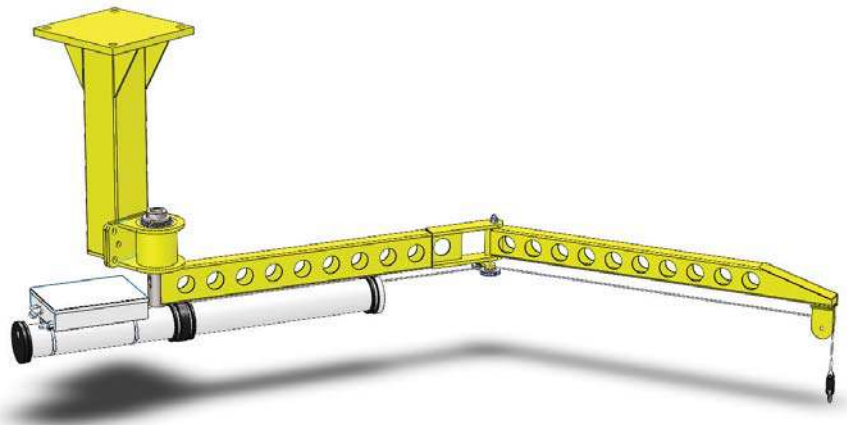
### OPTIONS

- CAPACITIES FROM 20 KG TO 2000KG
- CUSTOM BUILT TOOLS
- STANDARD ATTACHMENTS AVAILABLE
- INDOOR OUTDOOR USE
- TELESCOPIC COLUMNS AVAILABLE
- ADJUSTABLE LIFT HEIGHTS
- ROTATE OR TILT THE LOAD
- QUICK CHANGE TOOLS
- OPTIONAL SWIVEL 360
- POWER - PNEUMATIC - BATTERY - ELECTRIC

### LIGHTWEIGHT ALUMINIUM GANTRY



### CEILING MOUNTED ARTICULATED JIB CRANE



### FIXED PILLAR AND ALUMINIUM JIB CRANE





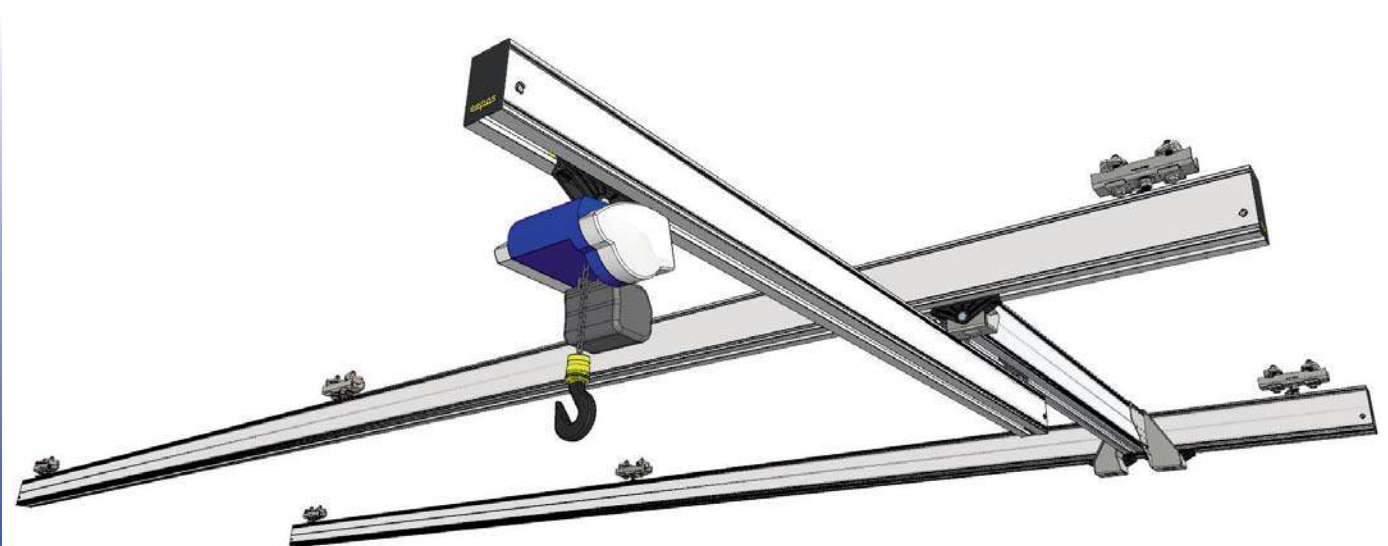
## EXAMPLES OF LIGHTWEIGHT ALUMINIUM GANTRY CRANE SYSTEMS



■ LIGHTWEIGHT ALUMINIUM GANTRY CRANE



■ LIGHTWEIGHT ALUMINIUM GANTRY CRANE



■ LIGHTWEIGHT ALUMINIUM GANTRY CRANE WITH TELESCOPIC GIRDER



## EXAMPLES OF ARTICULATED JIB CRANES



■ FIXED PILLAR & ARTICULATED JIB CRANE



■ FIXED PILLAR WITH STEEL STUB & ARTICULATED JIB CRANE

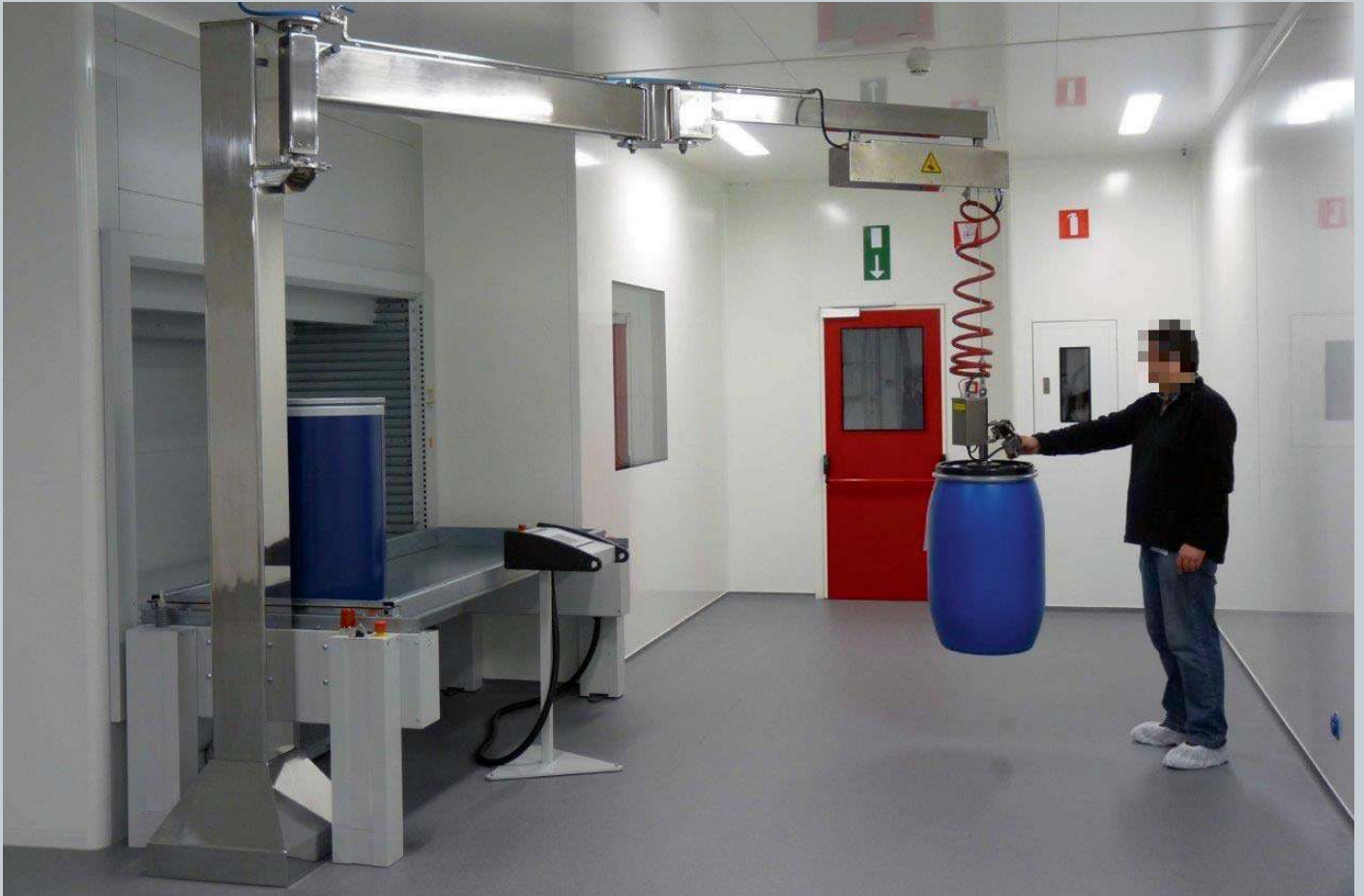


## STAINLESS STEEL ARTICULATED JIB CRANE



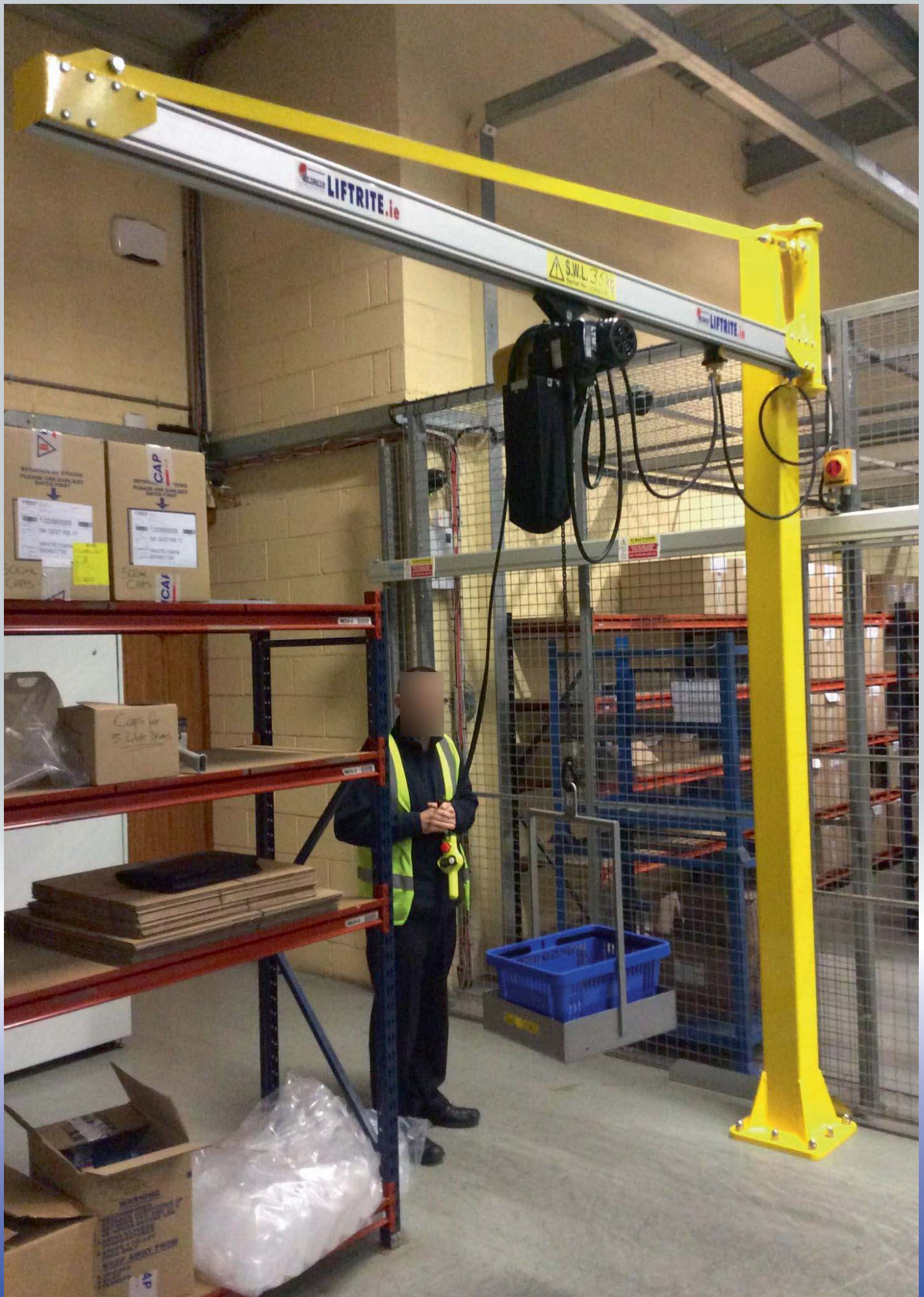
■ STAINLESS STEEL ARTICULATED JIB CRANE WITH MECHANICAL DRUM GRIPPER

## EXAMPLES OF STAINLESS STEEL ARTICULATED JIB CRANES





## FIXED PILLAR WITH LIGHTWEIGHT ALUMINIUM JIB ARM





## EXAMPLES OF FIXED PILLARS WITH LIGHTWEIGHT ALUMINIUM JIB ARMS



■ FIXED PILLAR WITH LIGHT WEIGHT ALUMINIUM JIB CRANE



## EXAMPLES OF PORTABLE CRANES



■ PORTABLE MOBI-ARM / ARTICULATED JIB CRANE



■ PORTABLE ARTICULATED JIB CRANE



■ PORTABLE FIXED JIB CRANE

## ALUMINIUM & STAINLESS STEEL LIFT TROLLEYS

### KEY FEATURES

- LIGHTWEIGHT & ERGONOMIC RANGE OF PORTABLE LIFTING EQUIPMENT TO PREVENT POTENTIAL INJURIES
- HIGHLY MANOEUVRABLE
- MANUAL / BATTERY OR ELECTRIC LIFT
- ALUMINIUM OR STAINLESS STEEL CONSTRUCTION
- MODULAR DESIGN
- SPINDLE DRIVE FOR MAXIMUM SAFETY
- VARIABLE LIFTING HEIGHTS & UNIT WIDTHS
- MAINTENANCE FREE BATTERIES
- INBUILT OVERLOAD PROTECTION
- SILENT OPERATION



### OPTIONS

- 70 - 90 - 130 - 175 - 225 - 300 KG UNITS AVAILABLE
- ATTACHMENTS - REELS - BOXES - SACKS - DRUMS ETC /
- MECHANICAL OR ELECTRICAL GRIPPERS,
- MECHANICAL OR ELECTRICAL ROTATORS,
- TELESCOPIC MAST EXTENSIONS
- BUILT IN SAFETY STEPS
- BUILT IN WEIGHING SCALES
- MAINTENANCE FREE HEAVY DUTY BATTERIES
- EX RATING OR ATEX COMPLIANT ON REQUEST
- SPECIALIST DESIGN SERVICE AVAILABLE



**STANDARD LIFTERS FOR NORMAL INDUSTRIAL APPLICATIONS**



■ 120 KG REEL ROTATOR



■ WHEEL LIFTER



■ REEL LIFTER WITH V BLOCK



■ 130 KG LIFTER WITH CONVEYOR PLATFORM



■ STAINLESS STEEL REEL ROTATOR



■ 175 KG LIFTER WITH STAINLESS PLATFORM



■ 90 KG ESD COMPLIANT LIFTER



■ 90 KG LIFTER STANDARD PLATFORM



■ 90 KG LIFTER STAINLESS & ALUMINIUM

STANDARD LIFTERS FOR NORMAL INDUSTRIAL APPLICATIONS



■ LIFTER WITH CLAMP & DRUM ROTATOR ■ LIFTER WITH DRUM ROTATOR



■ DRUM ROTATOR CONTROLS



■ LIFTER WITH EXPANDING PRONG FOR REELS WITH 90° ROTATION



■ EXPAND & TURN - REEL ROTATOR



■ 90° REEL ROTATOR



■ 90 KG LIFTER WITH TWO PLATFORMS



■ 90 KG LIFTER WITH FORK ATTACHMENT



■ LIFTER WITH TELESCOPIC MAST



**STANDARD LIFTERS FOR NORMAL INDUSTRIAL APPLICATIONS**



■ SPECIAL LOW MAST WITH FORKS



■ SPECIAL LOW MAST WITH FORKS



■ SPECIAL LOW MAST WITH FORKS



■ 175 KG LIFTER WITH SERVER LIFTING PLATFORM



■ LIFTER WITH POLYETHYLENE PLATFORM



■ LIFTER TO LIFT GLASS BOWL



■ GLASS BOWL 40 KG LIFTER



■ STAINLESS LIFTER WITH PLATFORM



## LIFT & DRIVE TO LIFT & ROTATE BINS



■ 175 KG LIFTER FOR BINS



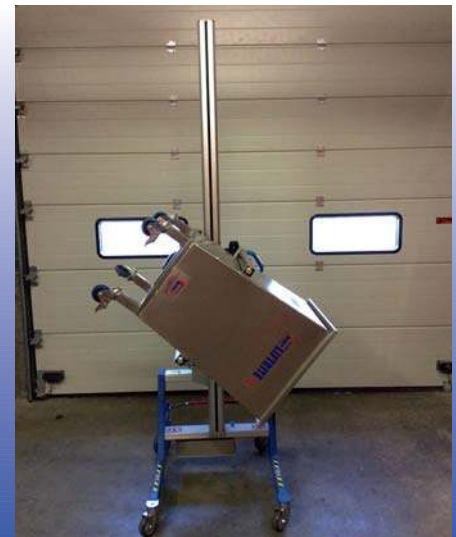
■ ATTACHMENT TO LIFT & ROTATE BINS / CAN BE DESIGNED FOR SPECIAL SOLUTIONS



■ 175 KG LIFTER



■ BESPOKE ATTACHMENT TO LIFT & ROTATE SWARF BINS





## CLEANROOM & FOOD APPLICATIONS

### KEY FEATURES

- MOBILE TROLLEYS FOR CLEANROOM AND FOOD APPLICATIONS
- STANDARD CAPACITIES: 40, 80, 150 & 300 KG
- POLISHED WELDS AND SEALED JOINTS
- STAINLESS-STEEL FINISH TO PREVENT DIRT-TRAPS
- 304 AS STANDARD
- 316 AVAILABLE
- HIGH QUALITY SURFACE FINISH AVAILABLE
- VERY MANOEUVRABLE
- ERGONOMIC DESIGN
- MANUAL OR ELECTRIC LIFT
- VARIOUS LIFT HEIGHTS AVAILABLE
- VARIETY OF ATTACHMENTS FOR DIFFERENT LOADS
- MECHANICAL OR ELECTRICAL ATTACHMENTS
- GRIPPERS, ROTATORS & DISPENSERS
- MAINTENANCE FREE, HEAVY DUTY BATTERIES
- ATEX COMPLIANT ON REQUEST
- CUSTOM BUILT ON REQUEST



## STAINLESS STEEL LIFTERS FOR CLEANROOMS AND FOOD APPLICATIONS



■ LIFTER WITH V-BLOCK FOR REELS



■ ELECTRIC REEL CLAMP & ROTATOR



■ MANUAL REEL CLAMP & ROTATOR



■ STAINLESS STEEL VESSEL ROTATOR



■ ATEX RATED LIFTER



■ CLEANROOM LIFTER FOR HOPPERS



■ LIFTING VESSELS



■ LIFTING DRUMS



■ MANUAL WINCH OPERATED LIFTER



STAINLESS STEEL LIFTERS FOR CLEANROOMS AND FOOD APPLICATIONS



■ LIFTING DRUMS



■ JIB ATTACHMENT WITH CHAINS



■ DRUM ROTATOR



■ HEAVY DUTY LIFTER WITH SPECIAL PLATFORM



■ STAINLESS STEEL PLATFORM FOR BOXES



■ SPECIAL COMPONENT ATTACHMENT



■ JIB ATTACHMENT WITH CHAINS



■ ATTACHMENT CAN PIVOT



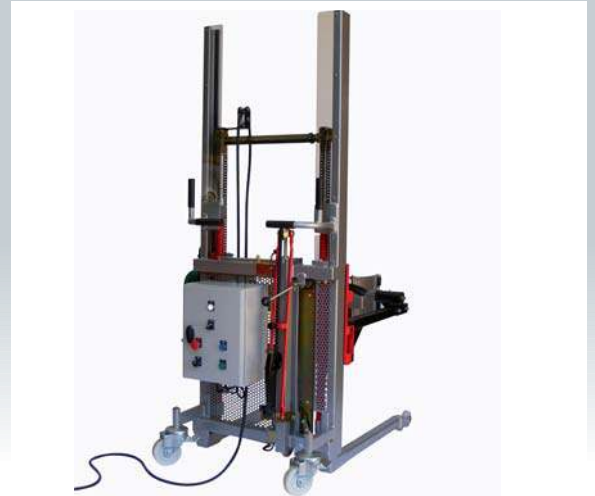
■ BESPOKE DESIGNS AVAILABLE



■ ELECTRIC LIFT TRUCK WITH DRUM ROTATOR - MANUAL PUSH



■ MANUAL TRUCK WITH DRUM ROTATOR



■ TRUCK WITH ELECTRIC MIXER FOR DRUMS



■ DRUM POSTIONER - VERTICAL



■ DRUM POSTIONER - TILTED



■ DRUM POSTIONER - HORIZONTAL



## DRUM TRUCKS, LIFTERS & ROTATORS



■ DRUM TRUCK TO DE-PALLETISE



■ DRUM TRUCK TO DE-PALLETISE



■ DRUM TRUCK TO DE-PALLETISE



■ DRUM TRUCK TO DE-PALLETISE



■ HOOK SUSPENDED DRUM CLAMP



■ DRUM ROTATOR ON FORKLIFT



■ HOOK SUSPENDED DRUM ROTATOR

## LIFT TRUCKS WITH STANDARD ATTACHMENTS



■ LIFT TRUCK WITH V-BLOCK FOR REELS



■ V-BLOCK & ROTATION FOR REELS



■ LIFT TRUCK WITH HINGED FORKS FOR REELS



■ LIFT TRUCK FOR UNPALLETISED BOXES & CRATES



■ LIFT TRUCK WITH FORKS



■ ADJUSTABLE - VARIABLE GEOMETRY



■ LIFT TRUCK WITH JIB ATTACHMENT



■ LIFT TRUCK FOR ROTATING BOXES



■ LIFT TRUCK WITH JIB & REEL ROTATOR



## MOBILE & STATIC SCISSOR LIFTS

### KEY FEATURES

- KEEPS LOAD AT A CORRECT ERGONOMIC WORKING HEIGHT
- REDUCES REPETITIVE BACK STRAIN CAUSED BY BENDING
- ASSIST IN PALLET LOADING APPLICATIONS
- ERGONOMICALLY DESIGNED WORK STATION
- CAN BE USED AS A DOCK LEVELLER FOR FORKLIFT TRUCKS
- PIT OR FLOOR MOUNTED
- STANDARD OR LOW PROFILE
- EXTERNAL OR IN-BUILT POWER PACKS
- STANDARD OR HEAVY DUTY CONSTRUCTION
- EXTENSIVE BUILT-IN SAFETY FEATURES
- FOR USE WITH EURO & UK PALLETS
- EMPHASIS ON SAFETY AND QUALITY
- CE MARKED

### OPTIONS

- 300 - 500 - 1000 - 2000 - 3000 - 4000 - 6000 - 10000 KG CAPACITY
- LIFT HEIGHTS FROM 500 MM TO 4600 MM
- E-SHAPED OR RECTANGULAR PLATFORM
- WIDE VARIETY OF PLATFORM LENGTHS AND WIDTHS
- TABLES CAN BE STATIC OR MOBILE
- MANUAL OR ELECTRIC
- MILD STEEL CONSTRUCTION AS STANDARD
- AVAILABLE IN GALVANISED OR STAINLESS STEEL FOR AGGRESSIVE APPLICATIONS (FOOD OR PHARMACEUTICAL) INDUSTRIES
- EXTENSIVE RANGE OF ACCESSORIES
- TURNABLES - RAMPS - SAFETY BELLOWS - PALLET BASE AVAILABLE
- TILTING OPTIONS AVAILABLE
- CUSTOM BUILT ON REQUEST
- EX RATING OR ATEX COMPLIANT ON REQUEST





## EXAMPLES OF STANDARD SCISSOR LIFT TABLES



■ DOUBLE SCISSORS BX 2000 KG



■ STANDARD DUTY AX 1000 KG



■ HEAVY DUTY DX 6000 KG



■ PIT MOUNTED AX 500 KG



■ BX 3000 KG



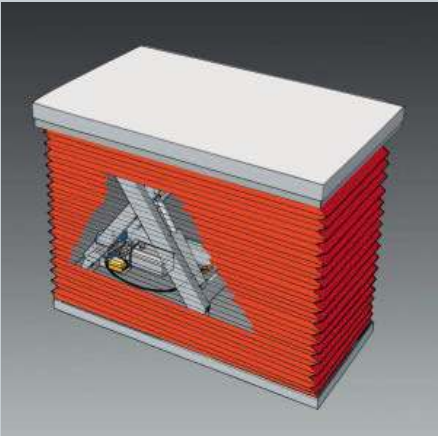
■ DX HEAVY DUTY LIFT TABLE



■ LOW PROFILE MX E-SHAPED 1000 KG



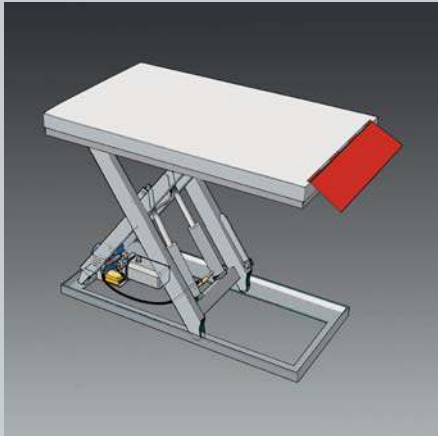
SCISSOR LIFT TABLE ACCESSORIES



SAFETY BELLOWS



ROLLER CONVEYOR PLATFORM



LOADING FLAP



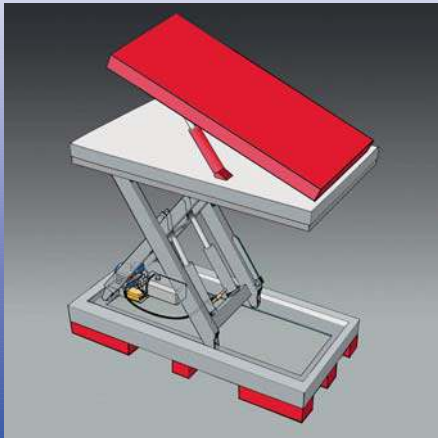
PIT MOUNTED SCISSOR LIFT TABLE



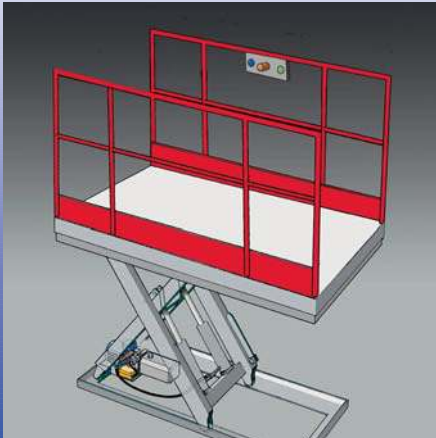
ANTI-ROLL OFF GUARD



CIRCULAR TURNTABLE



RAISE & TILT PLATFORM



SIDE BARRIER RAILS



SELF LATCHING HINGED SWING GATE





■ TXC MOBILE SCISSOR LIFT - 300 KG



■ TXC MOBILE SCISSOR LIFT - 500 KG



■ HF 2 C MOBILE SCISSOR LIFT - 250 KG



■ PALLET PAL 360



■ PALLET PAL 360



■ AIR OPERATED PALLET PAL



## ORDER PICKING / PLATFORM TROLLEYS / TOW TRACTORS / UTILITY VEHICLES

### OPTIONS

- ELECTRIC TOW TUGS CAPACITY UP TO 10,00KG ON FLAT GROUND
- HIGHLY MANOEUVRABLE
- BATTERY OPERATED
- ENVIRONMENTALLY FRIENDLY & VERY COST EFFECTIVE
- VARIOUS OPTIONS FOR HITCHING & TOWING
- PLATFORMS AVAILABLE
- SLOW / FAST SWITCH & ELECTRIC BRAKE
- ALL VEHICLES ARE CE CERTIFIED
- SAFETY FUNCTIONS INTEGRATED INTO ALL VEHICLES
- AFTER SALES SERVICE CAN BE PROVIDED





## EXAMPLES OF STANDARD ELECTRIC VEHICLES



■ M12 TOW TRUCK



■ M12 TOW TRUCK



■ M5 TOW TUG WITH LOAD BASKET



■ M9 REMOTE CONTROL TRUCK FOR SHOPPING TROLLEYS



■ M9 TOW TRUCK



■ M4 TOW TRUCK - PHARMACEUTICAL



■ M10 HD TOW TRUCK



## EXAMPLES OF STANDARD ELECTRIC VEHICLES



■ M6.5 TOW TRUCK



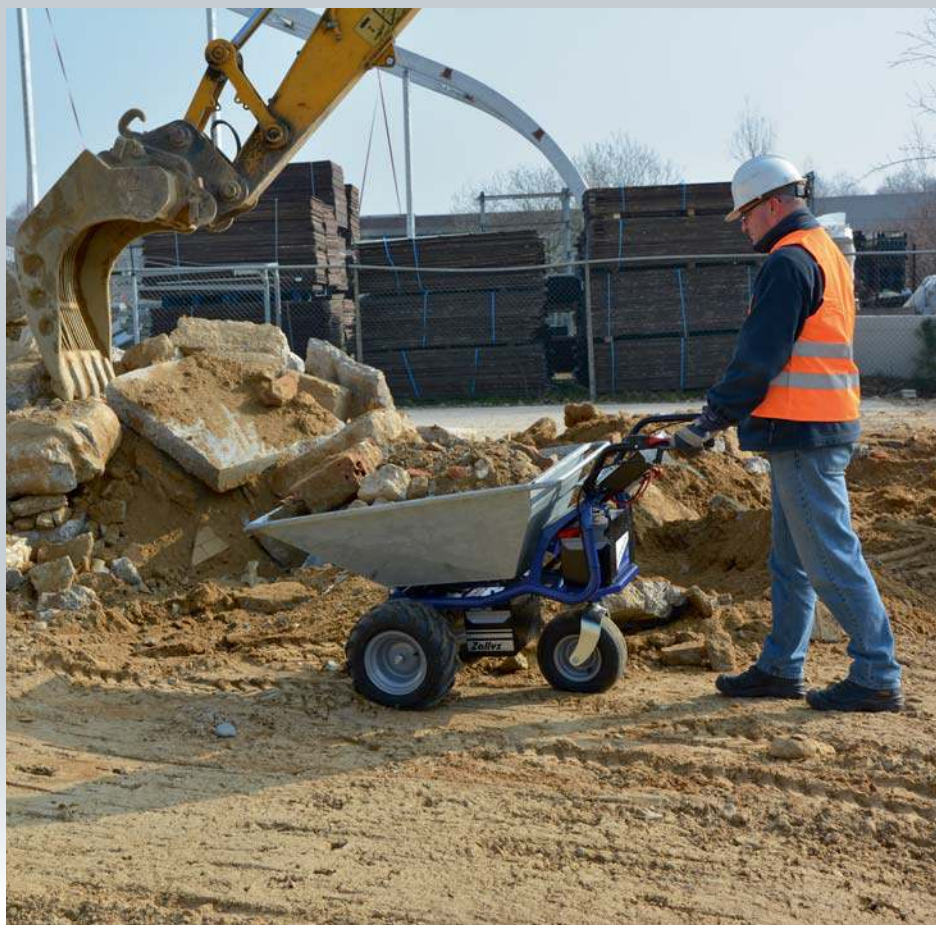
■ M6.5 TOW TRUCK TOWING LAUNDRY BINS



■ M6.5 WITH LIFTING SYSTEM



■ DUMPER-JET



■ DUMPER-JET ELECTRIC WHEELBARROW



■ M4 TOW TUG



■ M4 TOW TUG TOWING TROLLEYS



## EXAMPLES OF STANDARD ELECTRIC VEHICLES



■ **HELPFUL T PLATFORM TRUCK**



■ **HELPFUL T PLATFORM TRUCK IN GARDEN CENTRE**



■ **JESPI PLATFORM TRUCK**



■ **M15 ELECTRIC TROLLEY**



■ **M15 ELECTRIC TROLLEY**



■ **DDM PERSONNEL CARRIER**



■ **JACK PERSONNEL CARRIER**



## M6.5 ELECTRIC TOW TUG WITH LIFTING SYSTEM



■ M6.5 ELECTRIC TOW TUG WITH LIFTING SYSTEM



■ M6.5 ELECTRIC TOW TUG WITH LIFTING SYSTEM



## EXAMPLES OF ELECTRIC CARTS WITH SENSOR CONTROLLED HANDLES - TOUCH2MOVE



■ STAINLESS STEEL CART



■ SENSOR CONTROLLED HANDLES



■ GULL-WING DOORS



■ ELECTRIC CART WITH SENSOR CONTROLLED HANDLES & TELESCOPIC DRAWERS



■ TELESCOPIC DRAWERS



■ TELESCOPIC DRAWERS



■ BUNDED STORAGE - CHEMICAL DRUMS



■ BUNDED STORAGE - CHEMICAL DRUMS



■ FOLDABLE MESH SIDES





■ STACKER WITH DRUM ROTATOR ATTACHMENT



■ STACKER WITH ROTATOR ATTACHMENT



■ FULLY POWERED STACKER



■ HIGH LIFT PALLET TRUCK



■ FULLY STAINLESS STACKER



■ STANDARD PALLET TRUCK

## PALLET TRUCKS, TILTERS & HIGH LIFT PALLET TRUCKS



■ STANDARD PALLET TRUCK



■ SILENT PALLET TRUCK



■ POWERED PALLET TRUCK



■ TILTER



■ STAINLESS TILTER



■ TILTER



■ HIGH LIFT PALLET TRUCK



■ HIGH LIFT PALLET TRUCK



■ STAINLESS HIGH LIFT PALLET TRUCK



## EXAMPLES OF STACKERS & ROTATORS



■ TWIN STACKER



■ STACKER WITH MANUAL PUSH & POWERED LIFT



■ WIDE STRADDLE DRUM ROTATOR

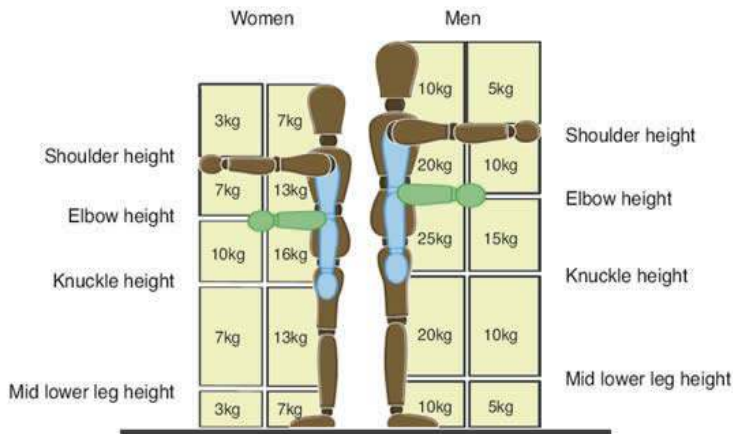
STAINLESS STEEL WIDE STRADDLE STACKER



■ STAINLESS STEEL STACKER TRUCK



## AN EXCERPT FROM THE HEALTH AND SAFETY AUTHORITY 'SAFE MANUAL HANDLING' GUIDELINES



### WHAT IS THE LAW?

#### Guide to the Safety, Health and Welfare at Work (General Application) Regulations 2007

The Regulations set out a framework for employers to avoid or reduce the risk of injury resulting from manual handling activities. The basic principle enshrined in this Part is that where manual handling of loads which involves a risk of injury (particularly to the back) is present, the employer must take measures to avoid or reduce the need for such manual handling. The definition of manual handling in Regulation 68 refers to activities where the characteristics of the load pose a risk and the ergonomic conditions of the activity are unfavourable. Regulation 69(c) requires that a risk assessment be carried out on all work tasks which involve manual handling activity. The risk assessment process should ensure that these activities are assessed to identify risk factors and to decide on appropriate control measures, including both engineering and organisational, to avoid or reduce the risk of musculoskeletal injury. This assessment should critically review manual handling operations. Full compliance with the requirements of Regulation 69 means that the employer completes a risk assessment of manual handling tasks in consultation with relevant staff, records the results of the risk assessment in a suitable documented format, puts appropriate control measures in place to avoid or reduce manual handling.

## HANDLE WITH CARE



### WHAT ARE THE MAXIMUM WEIGHTS TO BE LIFTED?

There are no longer any absolute weight limits – for the simple reason that there are too many other factors involved – these risk factors have already been covered.

### GUIDELINE WEIGHTS

#### KEY RISK FACTORS ARE:

- excessive fatigue
- bad posture – cramped, restricted areas
- heavy loads
- repetitive bending or twisting
- frequent lifting

However, this diagram indicates guideline weights for lifting and lowering for an adult male (fit and healthy) in the best working conditions. For a female all weights should be reduced by one third.

### TWISTING

If a lifting task includes twisting there is a considerable increase in the chance of injury.

### FREQUENT LIFTING OR LOWERING

These guideline weights assume up to 30 leisurely operations an hour – where the pace of work is not forced, there are adequate pauses to rest and the load is not held for any length of time.

The weights must be reduced if the operation is repeated more frequently

- by 30% if repeated once or twice per minute
- by 50% if repeated five to eight times per minute
- by 80% if repeated more than twelve times per minute

## TACKLING THE PROBLEM

Employers have to seriously look for ways of eliminating manual handling in all cases.

### PROVISION OF MECHANICAL AIDS

Wherever practical they must be provided – they can be as simple as a sack trolley. Any necessary training in their use must be provided.



### **LIFT RITE LTD.**

Unit F1, Business Campus, Maynooth, Co. Kildare.

Tel: +353 1 601 6106 Fax: +353 1 601 6109

Mobile: +353 86 816 1088

Email: [info@liftrite.ie](mailto:info@liftrite.ie)

Web: [www.liftrite.ie](http://www.liftrite.ie)



**SPECIALISED MATERIALS HANDLING AND LIFTING EQUIPMENT**

