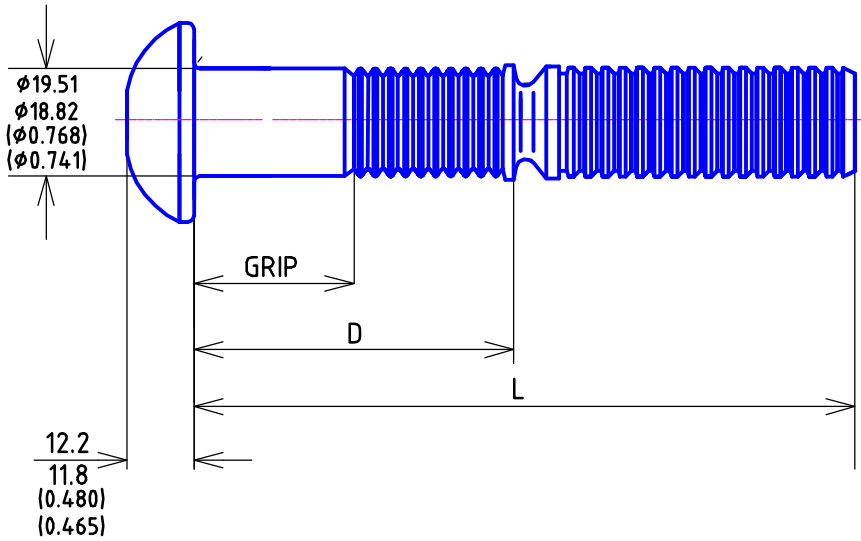
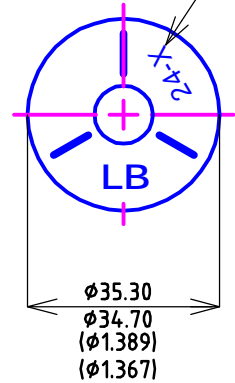


Unit:mm/(inch)



Letter Showing:  
Min-Max Grip Range



**MECHANICAL PROPERTIES:**

Min Ultimate Tensile: 178 (KN)  
Clamping Load: 127 (KN)  
Min Shear Strength: 144 (KN)  
Max Hole Diameter: 20.5 (mm)  
Max Pin Protrusion: 9.5 (mm)  
Max Pin Intrusion: 1.6 (mm)

Raw Material Specification: ALLOY STEEL

Finish:  
Plain (Black & Oiled)

APPROVED BY CUSTOMER For Manufacture	
Name: _____	Date: _____
Signature: _____	

3/4"	Part Number	Grip(mm)		Grip(inch)		D(mm)		D(inch)		L(mm)		L(inch)		Head Marking
		Min	Max	Min	Max	Min	Max	Min	Max	Min	Max	Min	Max	
24-04	ERSB24-04	6.35	12.70	0.25	0.50	38.10	39.10	1.50	1.53	104.10	108.60	4.10	4.27	24-4
24-08	ERSB24-08	12.70	19.05	0.50	0.75	44.40	45.40	1.75	1.78	110.40	114.90	4.35	4.52	24-8
24-12	ERSB24-12	19.05	25.40	0.75	1.00	50.80	51.80	2.00	2.03	116.80	121.30	4.60	4.77	24-12
24-16	ERSB24-16	25.40	31.75	1.00	1.25	57.10	58.10	2.25	2.28	123.10	127.60	4.85	5.02	24-16
24-20	ERSB24-20	31.75	38.10	1.25	1.50	63.50	64.50	2.50	2.53	129.50	134.00	5.10	5.27	24-20
24-24	ERSB24-24	38.10	44.45	1.50	1.75	69.80	70.80	2.75	2.78	135.80	140.30	5.35	5.52	24-24
24-28	ERSB24-28	44.45	50.80	1.75	2.00	76.20	77.20	3.00	3.03	142.20	146.70	5.60	5.77	24-28
24-32	ERSB24-32	50.80	57.15	2.00	2.25	82.50	83.50	3.25	3.28	148.50	153.00	5.85	6.02	24-32
24-36	ERSB24-36	57.15	63.50	2.25	2.50	88.90	89.90	3.50	3.53	154.90	159.40	6.10	6.27	24-36
24-40	ERSB24-40	63.50	69.85	2.50	2.75	95.20	96.20	3.75	3.78	161.20	165.70	6.35	6.52	24-40
24-44	ERSB24-44	69.85	76.20	2.75	3.00	101.60	102.60	4.00	4.03	167.60	172.10	6.60	6.77	24-44
24-48	ERSB24-48	76.20	82.55	3.00	3.25	107.90	108.90	4.25	4.28	173.90	178.40	6.85	7.02	24-48
24-52	ERSB24-52	82.55	88.90	3.25	3.50	114.30	115.30	4.50	4.54	180.30	184.80	7.10	7.28	24-52
24-56	ERSB24-56	88.90	95.25	3.50	3.75	120.60	121.60	4.75	4.79	186.60	191.10	7.35	7.52	24-56
24-60	ERSB24-60	95.25	101.60	3.75	4.00	127.00	128.00	5.00	5.04	193.00	197.50	7.60	7.78	24-60
24-64	ERSB24-64	101.60	107.95	4.00	4.25	133.30	134.30	5.25	5.29	199.30	203.80	7.85	8.02	24-64
24-68	ERSB24-68	107.95	114.30	4.25	4.50	139.70	140.70	5.50	5.54	205.70	210.20	8.10	8.28	24-68
24-72	ERSB24-72	114.30	120.65	4.50	4.75	146.00	147.00	5.75	5.79	212.00	216.50	8.35	8.52	24-72
24-76	ERSB24-76	120.65	127.00	4.75	5.00	152.40	153.40	6.00	6.04	218.50	223.00	8.60	8.78	24-76

2013.6.20

No. \_\_\_\_\_ Alternation: \_\_\_\_\_ Date: \_\_\_\_\_ Check: \_\_\_\_\_ Approved: \_\_\_\_\_

Customer:

3/4" Round Head Lock Pins

Customer's P/No.:

Customer's Drawing: