



2019  
COMPANY PROFILE

Experienced professionals  
possessing over

**100** years

of collective experience



# ABOUT US

Blacc Investment Group (BIG)

## HISTORY & BACKGROUND

Blacc Investment Group (Pty) Ltd. (BIG) is an integrated business services group, specialising in engineering consulting, impact and infrastructure investments and facilities management.

A group of accomplished and ambitious professionals, we not only aspired to set the standard for entrepreneurial leadership, but were urged by Africa's need for economic emancipation and self reliance.

To make our mark in the pursuit of this aspiration, we believed that the built

environment and our engineering pedigree, both individual and collective, would constitute a formidable combination. In 2012, we set off to create what would a few years later become a reputable industry leader in the delivery of engineering, advisory and investment solutions for the built environment.

BIG is directed by highly experienced professionals possessing over 100 years of collective experience in various spheres including science, engineering, environment and infrastructure development.

## THE BUSINESS AT A GLANCE

A 100% black-owned holding company, BIG operates three subsidiaries, of which it owns 100%:



### Blacc Engineering Services (Pty) Ltd. (BES)

BES is a multi-disciplinary firm that delivers engineering, environmental and project management solutions to clients across a wide range of industries.



### Blacc Projects & Advisory (Pty) Ltd. (BPA)

BPA is an impact investment and advisory firm. It facilitates industrialisation within and beyond the government's industrialisation programmes. The business also provides investment advisory services as a support function for municipalities and local government including within the group.



### Blacc Commercial Services (Pty) Ltd. (BCS)

BCS is a provider of outsourced management services for distribution and facility management.





## MISSION

We exist to realise Africa's aspiration of economic emancipation and self reliance. We epitomise 'African excellence' through unmatched innovation and sustainable solutions.

## VISION

We strive to become a "benchmark to writing the new African story".



## APPROACH

Our approach to business is simple. To produce leading thought and results, we combine research, experience and skill with the best available technology, and execute seamlessly on each assignment.



## VALUES

**Sustainability** - Our activities deliver sustainable ends.

**Creativity and Innovation** - We go beyond conventional.

**Responsibility and Accountability** - We mean what we mean and stand up for it, no matter the consequences.

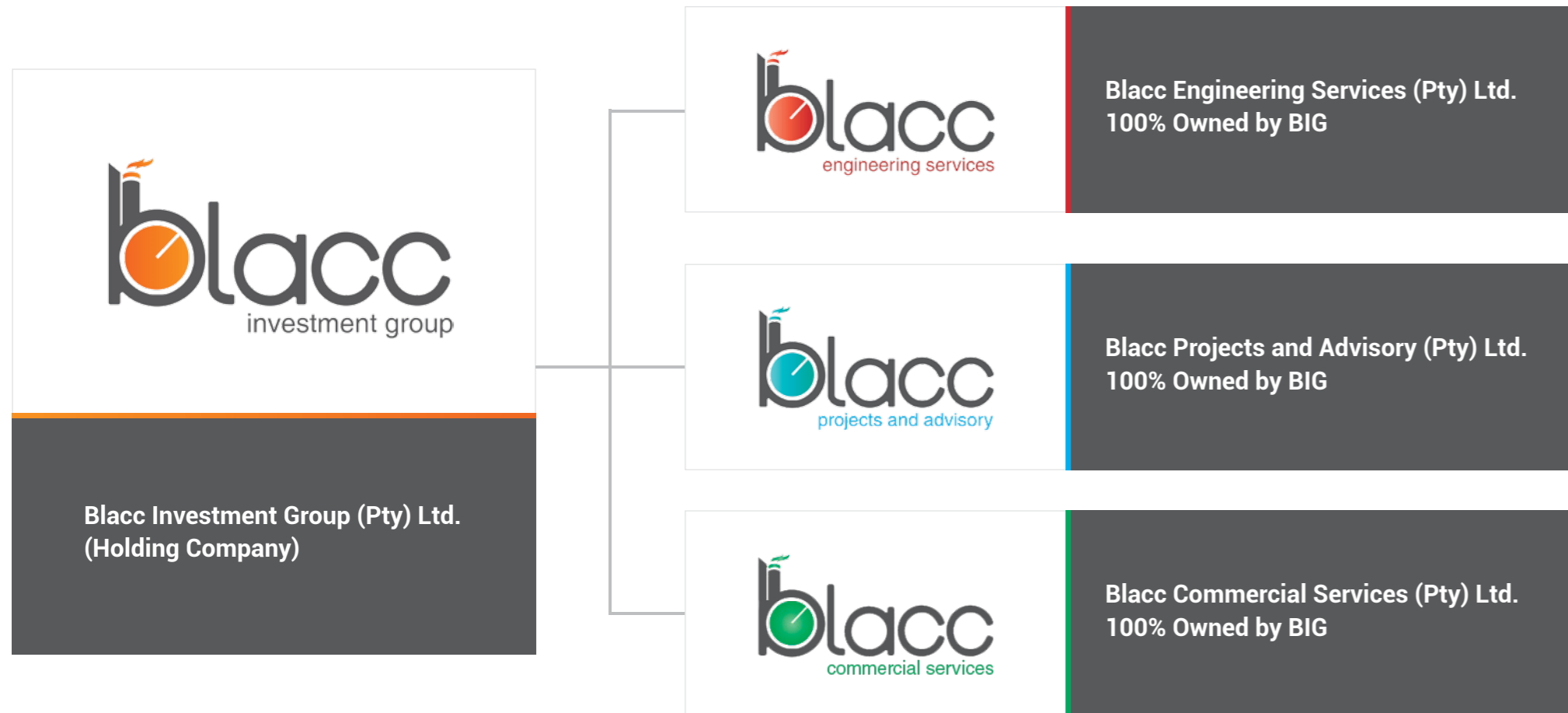
**Ubuntu** - I am because you are.

**Integrity** - We are honest.

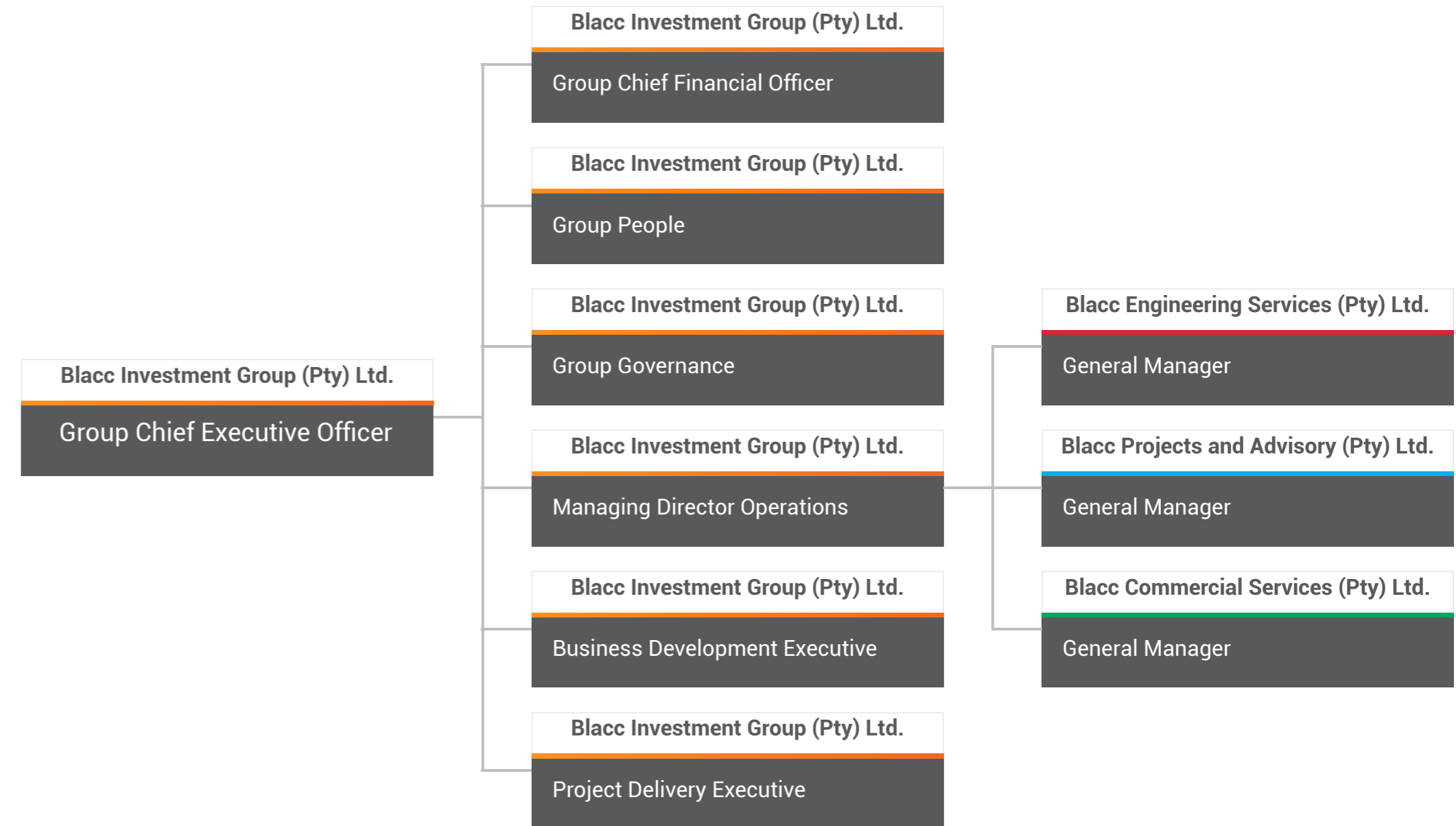
**Passion** - We deliver exceptionally because we enjoy what we do.



company  
*structure*



# MANAGEMENT STRUCTURE







## ABOUT US

BES is a multi-disciplinary firm that delivers engineering, environmental and project management solutions to clients across a wide range of industries.



Our credentials enable us to deliver customised

*solutions*

throughout the lifecycle of any project

## WHAT CLIENTS CAN EXPECT

We have proven an obvious choice to clients that value and seek:

- Diversity and depth in engineering skillsets, experience and expertise
- Innovative, yet practical and easy-to-apply solutions.

From mining and metals, hydrocarbons, municipalities, infrastructure to construction, these and other credentials enable us to deliver customised solutions throughout the lifecycle of any project.

A number of our engineers and environmental specialists have had the privilege of serving in positions of influence in the engineering consulting space working for some of the leading brands in the industry. This translates into a formidable consulting and managerial capability for our business, with our clients enjoying the ultimate benefit of this added factor.

# INDUSTRIES

## MINING

To minimise cost, optimise process and maximise revenues, we assist the mining and mineral processing fraternity with various engineering and specialised solutions including system designs and geometallurgical services.

## WATER

We provide practical water treatment solutions. Our process engineering and scientific capabilities encompass all aspects of industrial, municipal, recycled and industrial water treatment. Through our strategic partners, we provide effective solutions in biosolids, portable water, wastewater, recycled water, acid mine drainage (AMD) and desalination, treatment plan design, treatment system planning, asset and operational management.

## PETROCHEMICALS

We provide engineering equipment design for heavy and light fuel storage depots with the necessary environmental requirements.

## PUBLIC SECTOR

We work across levels of government including municipalities to design, manage, advise and deliver well conceptualised portfolio of engineering services. We have been privileged to work with government agencies in the areas of infrastructure development, health and agriculture.



# SERVICES

## ENGINEERING DESIGN AND STUDIES

Our engineering design and studies capabilities enable us to conduct all facets of engineering studies. Backed by relevant technical and industry experience, our designs satisfy the most stringent of requirements and conditions, which covers the following:

- Conceptual/desktop studies - High level process options evaluation on how best to carry the project forward.
- Pre-feasibility and feasibility study - This stage involves selection of the feasible process option with a 30 - 15% apex accuracy level.
- Bankable/Execution level study - Comprises detailed engineering and issue for construction documentation.
- Hydrocarbon Storage and Distribution Systems.
- Mineral Processing Systems.

## SHEQ

Our services in this domain include:

- Pre-certification audits
- Improvement of NOSA grading
- Establishing and maintaining various SHEQ systems, e.g. ISO 14001, OHSAS 18001, ISO 9001
- Compiling SHE legal registers.

## ENVIRONMENTAL MANAGEMENT

In managing environmental matters, we undertake various activities including:

- Environmental assessments
- Evaluating project social, economic and ecological impact
- Facilitating liaison between various stakeholders
- Filing applications and securing project approvals
- Conducting investigations and reporting
- Managing and auditing environmental management systems.

## PROJECT MANAGEMENT

Our project management unit provides a best-in-class service throughout a given project, i.e. from design to development, analyses, evaluation, engineering, procurement and construction.

We apply sound project management principles whilst granting clients enhanced flexibility and security for managing change during the project lifecycle.

## CONSTRUCTION MANAGEMENT

We are a multidisciplinary industrial constructor with experience in plant construction, building, factory layout design and infrastructure. The buoyant force behind our construction management is a team of dedicated and hands-on professionals, possessing solid experience ranging from years of managing construction projects in Africa.

Construction management entails client support in ensuring that the desired plant construction is as per design. This support includes:

- Issuing of construction stage certification
- Ensuring that areas that can result in early commissioning are identified and fast-tracked.

## COMMISSIONING SERVICES

Our commissioning specialists provide complete commissioning support to the mineral and metals industry, i.e. mining houses, EPCM contractors and equipment suppliers.

We are a key component in bringing together design, construction and operation through collaborative methods.







## ABOUT US

BPA is an impact investment and advisory firm. It facilitates industrialisation within and beyond the government's industrialisation programmes. The business also provides investment advisory services as a support function for municipalities and local government including within the group.

## WHAT CLIENTS CAN EXPECT

We rely on our innovative culture, wide expertise and an industrious approach to feasibility assessment to:

- Provide advisory to socioeconomic stakeholders on how best to utilise resources at their disposal to ensure sustainable economic development and empowerment of their constituencies.
- Deliver not just bankable business propositions, but ones that ensure minimal ecological impact and sustainable project gains.
- Deliver solutions that are perfectly tailored to stakeholder needs and conditions.

In a continent severely constrained by skill shortages, all projects we partake in are a unique opportunity for us to transfer skills and expertise that we have amassed and continue to augment as we serve. We consider this a critical developmental and sustainability imperative.



# SERVICES

## PROJECT CONCEPTUALISATION AND STRUCTURING

Enabled by our understanding of local, regional and global socioeconomic forces, we:

- Identify opportunities for investment and development
- Identify the most relevant categories of stakeholders and beneficiaries
- Conceptualise solution ideas and structure them into meaningful and high impact projects.

## PROJECT ADVISORY

Our project advisory services focus on the processes required to effectively and efficiently plan and manage projects, improve transparency and accountability among stakeholders, control cost and avoid, minimize, or resolve disputes throughout the project lifecycle.

We offer clients advice on niche project finance solutions and provide transactional, project development and implementation support outside of traditional balance sheet finance options.

## PROJECT FINANCE AND FINANCIAL MODELLING

We leverage our core financial, legal and technical knowledge, skills and experience to guide a project from concept to successful implementation.

We offer a service that will assist clients in developing bankable projects, facilitating the successful raising of capital, timeous financial and technical close and ultimately the effective execution of a project.

We provide effective systems for loan drawdown through the funding phase of a project, as well as ongoing back-office and administrative support for debt management and repayment.

We also support clients to create value in private equity opportunities.



## MUNICIPAL AND LOCAL GOVERNMENT ADVISORY

Through partnership with other BIG subsidiaries, we provide the following advisory services to municipal and local government:

- Project management
- Professional advisory and support services
- Implementation of municipal services delivery (waste collection services, waste water treatment and maintenance)
- Technical due diligence and feasibility studies
- Environmental management services.

## WASTE MANAGEMENT SERVICES

Development, review and update of integrated waste management plans, waste management education and weakness programmes.

## LANDFILL MANAGEMENT SERVICES

Management of municipal and third party landfill sites, landfill auditing services, development of landfill sites, rehabilitation of municipal and third party landfill sites, environmental management plan surveys and reports and landfill closure permits.

## RECYCLING AND RECLAMATION SERVICES

Recycling and reclamation management services, i.e. glass, paper, plastic, cans, metals (ferrous and non-ferrous), waste beneficiation, renewables from recycles.



## INDUSTRIES

Our target market extends over a wide range of industries, including:

- Mining and Mineral Beneficiation
- Renewables and Power
- Hydrocarbons
- Manufacturing
- Process Engineering
- Petroleum Pipeline
- Paper and Pulp
- Mass Rail Transport
- Agro-Processing
- Services
- Construction
- Telecoms





## ABOUT US

BCS is a provider of outsourced management services for distribution and facility management.



Our clients benefit from an integrated and tailored *solution.*

## WHAT CLIENTS CAN EXPECT

The very diverse nature of our service portfolio (cleaning, gardening, maintenance, logistics, procurement - supplies in built environment and beyond), is a distinct advantage for our clients who benefit from an integrated and tailored solution.

The group's engineering inclination and the availability of top-end professional talent across all levels, set us apart in the facilities and logistics landscape in Africa. Whether it's building or maintenance, or cleaning and landscaping, we have capable resources in the mechanical, electrical, chemical, architectural, surveying, civil and environmental disciplines.

Our handymen are each multi-skilled, certificated and experienced across several of these disciplines. All of this quality comes at optimum cost, ensuring guaranteed value for money for clients.

# SERVICES

## FACILITIES MANAGEMENT

In this realm, we offer the following:

**Cleaning** - General cleaning, hygiene cleaning, specialised cleaning, pest control, laundry services.

**Gardening & Landscaping** - General gardening, garden cleaning, landscaping and irrigation (garden planning, construction and maintenance).

**Building & Maintenance** - Bricklaying, plastering, paving, walling, carpentry, electrical, mechanical, space design and partitioning, painting, welding and steelworks.

## INDUSTRIES

### Education

Whether public or private, intermediate or tertiary, we serve educational institutions in a manner that creates a productive social and learning environment, from day-to-day cleaning to gardening and ad hoc maintenance.

### Sport and Recreation

Whether a sporting venue, public gathering arena or a recreation park, we assign multidisciplinary teams to design and maintain facilities that meet all local requirements and conditions.

### Healthcare

From cleaning to medical waste management, our environmental specialists prioritise safety and hygiene in creating an environment that induces speedy healing while ensuring compliance with all applicable regulations.

### Industrial and Manufacturing

We provide packages of service for industrial processing facilities (heavy plants and factories) from industrial and general cleaning to facility maintenance. In this quest, we guarantee minimal interference with operations

## LOGISTICS

Our logistics specialists are well trained and capable of supporting clients in different sectors with:

- Customs clearing and forwarding as well as completion of statutory documentation
- Securing import and export licenses
- Advice on the cost of importing and exporting
- Research, benchmarking and costing of various products
- Warehouse management and shipping control.

and ensure that work is performed at the highest standards of safety.

### Commercial

Attractiveness and orderliness are critical for clients in commercial and real estate settings. Our landscaping, gardening, cleaning, space planning skills and processes enable clients in these environments to attract enviable numbers in terms of tenants, buyers and visitors.



# OUR PEOPLE

## PEOPLE PHILOSOPHY

Quality, speed, technology and capital resources have become mere commodities in the dynamic and ever-changing business environment. At BIG, we consider “people” to be the real differentiator; hence our philosophy, “People success breeds business success”.

We have understood that our ability to evolve with the ever-shifting business landscape lies in us being able to:

- Attract the right people, deploy them in the right roles, develop them effectively, at the right time and for the right reasons.
- Create an organisational environment where people are willing to be part of constant business evolution.
- Create an environment, through effective people development, where people can thrive and reach their potential whilst contributing to realisation of organisational goals.

These are evident in the culture we have built and capabilities we have developed for individuals and teams across the group.



## EXPERIENCE

Our experience at individual and collective level includes the following sectors:

- Mining and Minerals (gold, coal, iron ore, chrome, manganese, hydrocarbons, base metals and precious metals)
- Manufacturing
- Construction
- Real Estate.

## EXPERTISE

Our engineers and scientists enjoy the following credentials:

- Over 100 years of collective experience across industries and sectors.
- Registrations with professional bodies such as Engineering Council of South Africa (ECSA) and similar.
- Most engineers, scientists and project managers possess postgraduate qualifications and are multilingual (French, Swahili and all South African languages).
- Project/study managers and partner consultants held senior positions in multinational companies prior to joining or partnering with the group.

The expanse of our expertise extends across the following areas:

- Operator Training
- Operation Management
- Construction Management
- Commissioning Management
- Environmental Management
- Geometallurgical Investigations
- Effluent Treatment Management
- Project and Study Management
- Mineral Process and Refinery Plant Design
- Sampling Campaign Design and Management
- Metallurgical Test work Design and Management
- Owners Team - through partnership with our consultant specialists
- Engineering Management
- Risk Management
- Engineering Configuration Management for plants and power stations.







# REACH

## OUR REACH



- **BOTSWANA**
- **DRC**
- **MALI**
- **NAMIBIA**
- **SOUTH AFRICA**
- **ZAMBIA**
- **ZIMBABWE**

# WHY

## WHY BLACC INVESTMENT GROUP (BIG)

### DIVERSITY

The group enjoys enviable diversity in terms of expertise, demographics and a balanced portfolio of services offered by its subsidiaries. Thus, we are able to offer comprehensive solutions across a variety of environments.

### INNOVATION AND SUSTAINABILITY

Our innovation has not only placed us in a cost leadership position, but also enabled us to solve very complex ecological and socioeconomic challenges.

Commitment to sustainable and ecologically savvy business outcomes is something we take personal, an ideal we consider critical in us modelling the way as a business of the future.

This commitment is evident in the diligent approach we adopt in selecting projects and investments we undertake.

### VALUE FOR MONEY

In each of the projects we have undertaken, we have proven that it is possible to offer the highest level of quality at market beating cost.

Our cost management and innovative approaches have proven not only 'value for money' for clients, but a significant competitive advantage for our group. In a resourced constrained world, we are pleased to be able to offer more for less, always.

### CLIENT-CENTRICITY

We believe that great results are achieved against a backdrop of effective relationships.

This is one of the reasons why we embed ourselves in the business of the client to become a day-to-day partner; not just a service provider.

Among mechanisms that have driven our success in this regard is appointment of relationship managers for each of our clients. Through relationship managers serving as critical conduits, complimented by our research capabilities, we gather insights that impact the client's business, both in its internal and external environments.

### TRANSFORMATION

We are pleased that our clients enjoy the compliance benefits of doing business with a 100% black owned organisation. However, our commitment to transformation goes beyond mere compliance.

This is demonstrated in our various transformation initiatives including development of black engineers and scientists, our investment in ideas and projects that produce greater good for the greatest number of beneficiaries in the previously disadvantaged spheres, including support for the black industrialists programme.

### CAPACITY

Pivoted around management and staff capabilities, our capacity is further augmented through latest technologies and software packages that enable us to crack the most complex of problems and assignments.

To ensure versatility and agility, we have carefully identified and forged professional relationships with experienced and well-capacitated strategic partners whose credentials are substantiated by a tangible track record.





# EXPERIENCE

Investing in the new African Story of Excellence



**Client Name:** MISA  
**Commodity:** Water & Sanitation  
**Description:** Development of operation and Maintenance plan



**Client Name:** Phalaborwa Copper Mining  
**Commodity:** Copper  
**Description:** Commissioning of Floatation Plant.



**Client Name:** Worley Parsons (RSA)  
**Commodity:** Diamond  
**Description:** Structural assessment.



**Client Name:** EconOil & Energy (Pty) Ltd  
**Commodity:** Heavy Fuel and Light cycle oil  
**Description:** Oil depot expansion feasibility study & controlled budget estimate



**Client Name:** Two Rivers Platinum Mine  
**Commodity:** PGMs  
**Description:** Plant assessment and due diligence, Stocktaking



**Client Name:** METC Engineering  
**Commodity:** Copper & Cobalt Design  
**Description:** Process Engineering Study scope



**Client Name:** Revolt Investments and projects  
**Commodity:** Uranium  
**Description:** Update the process Piping & Instrumentation Diagram.



**Client Name:** Vedanta Skorpion Zinc (Namibia)  
**Commodity:** Zinc  
**Description:** Optimisation of the Comminution and leach circuit





# MAKE CONTACT

## GAUTENG ADDRESS

The District  
8 Kikuyu Road  
Sunninghill, 2191  
Johannesburg  
South Africa

## TELEPHONE

010 900 4218

## FREE STATE ADDRESS

3668 Twin Hill Park  
Masilo  
Theunissen, 9410  
South Africa

## TELEPHONE

072 206 2577

## POSTAL ADDRESS

Postnet Suite 90  
Private Bag X1  
Melrose Arch, 2076  
Johannesburg  
South Africa

## EMAIL

[info@blaccholdings.com](mailto:info@blaccholdings.com)

## WEBSITE

[www.blaccholdings.com](http://www.blaccholdings.com)