



**EXPANDA  
RANGE**

FLAT-PACKED, MAN-PORTABLE, MODULAR BUILDINGS

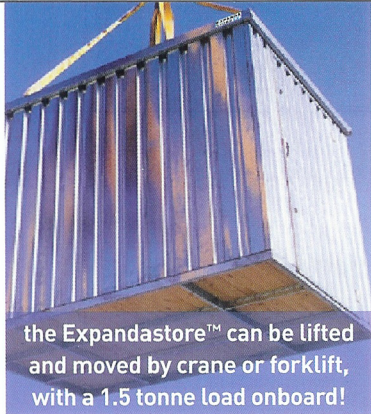


**EXPANDA  
STORE** 

**the unique storage building**

...that can go anywhere!

**EXPANDASTORE** 



the Expandastore™ can be lifted and moved by crane or forklift, with a 1.5 tonne load onboard!

# EXPANDASTORE

## The flat-pack, man-portable, modular storage building

All components are **totally man-portable** and can be carried into locations with **restricted access** for its **simple assembly**

The **only** tools required are a **socket set and screw driver**

The strong profiled steel building is manufactured in **galvanized steel** for long life and features **double locks** on the doors for added security

**Units can be linked together** to form larger areas of storage space, side to side or end to end

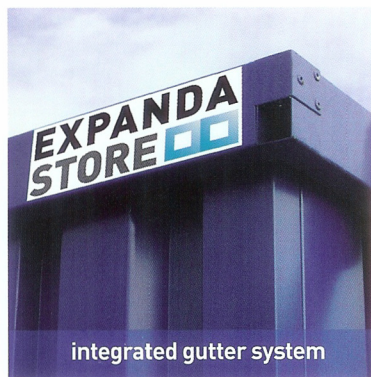
If not in use the **Expandastore™ can be returned** to its **flat-packed** form for transportation or easy stackable storage



smart external appearance

**All parts of an Expandastore™ can be replaced**

**Optional protective powder coated finishes** are available:



integrated gutter system



Green  
RAL6005



Blue  
RAL5010

(other special colours available on request)

## Expandastore™ accessories

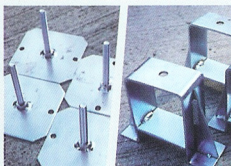
EASY-FIT SHELVING



TOOL BINS



LEVELLING & FORKLIFT FEET



DOOR CLOSER







2m Expandastore™ model shown



arrives flat-packed



man-portable



simple to assemble



ready for use



LINKING KIT



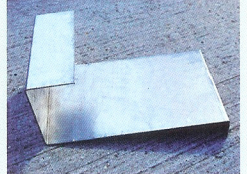
RAMP



LOCKING BAR

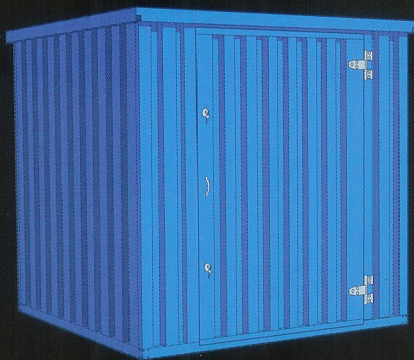


WALL HOOK

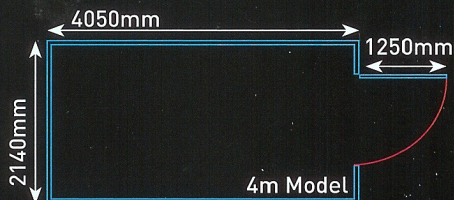
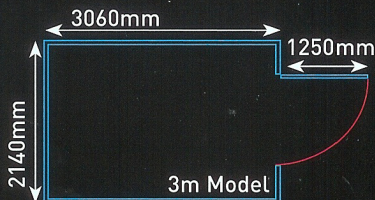
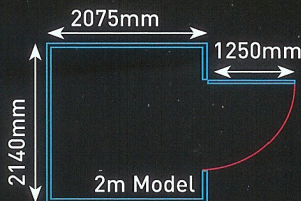




## Basic sizes (all expandable)



Length: 2m or 3m or 4m  
Width: 2.1m  
Height: 2.1m



## Technical specification

### DESCRIPTION

Uninsulated demountable storage container.

### DIMENSIONS

All flat packed units are 300mm high

All assembled units are 2140mm high

Type	Length	Width	Weight
2m Model	2075mm	2140mm	325kg
3m Model	3060mm	2140mm	400kg
4m Model	4050mm	2140mm	500kg

Doors fitted in the long side are a no-cost option

### CONSTRUCTION COMPONENTS

1. Chassis
2. Side wall panels
3. Roof panel
4. Door panel
5. Fastening elements

### CHASSIS & FLOOR

Pre-assembled 18mm thick Grade 3 OSB Norbord screwed to a galvanized steel box profile frame.

### SIDE WALLS, DOOR & ROOF PANEL

0.73 mm box profile galvanized steel panels, strengthened with spot welded galvanized steel frame sections at the edges of each panel. The roof section has two integral gutters for effective rainwater dispersal to all four corners of the container. The door is pre-mounted into the frame on galvanized hinges, complete with two 64mm Euro deadlocks with replaceable cylinders and a central roller catch. Door width: 1250mm, hinged on the right, outward opening.

### FASTENING COMPONENTS

Four 12 mm diameter rods are used to connect the lifting eyes to the chassis. The wall panels are fixed to the chassis with 13mm bolts into captive nuts. Additional roof security bolts are supplied to prevent external access.

### PACKING

All components of the Expandastore™ are packed to ensure that they are not damaged during transportation, loading and unloading under normal circumstances. The smallest transportation cube is achieved in this packing process.

### EXPANDABLE

Units can be enlarged by the addition of further units. A special linking kit is available to extend side to side or end to end.



Double-locking security  
as standard



EXPANDASTORE 

**BUILDING CHECKLIST**

	Expandastore™	Standard Store
Flat-packed	✓	X
Man-portable	✓	X
Flexible	✓	X
Simple Assembly	✓	X
Modular	✓	X



## EXPANDA RANGE

FLAT-PACKED, MAN-PORTABLE, MODULAR BUILDINGS

### EXPANDAKABIN



office or workshop

### EXPANDACHEM



hazardous materials store

### EXPANDASTORE



storage building

Ideal for siting in locations with limited access. Light enough to be man handled and with components that are small enough to fit through small passageways.

**YOUR AUTHORISED EXPANDARANGE™ DEALER IS:**

## TP Structures Ltd

33 Abbey Foregate  
Shrewsbury  
Shropshire SY2 6BL

Telephone: 01743 818366  
Fax: 01743 818568

Email: [info@tpstructures.co.uk](mailto:info@tpstructures.co.uk)  
Web: [www.tpstructures.co.uk](http://www.tpstructures.co.uk)