



ROTECH FOR RELIABILITY!

Why Accept Anything Less?

BRAD® CONNECTIVITY

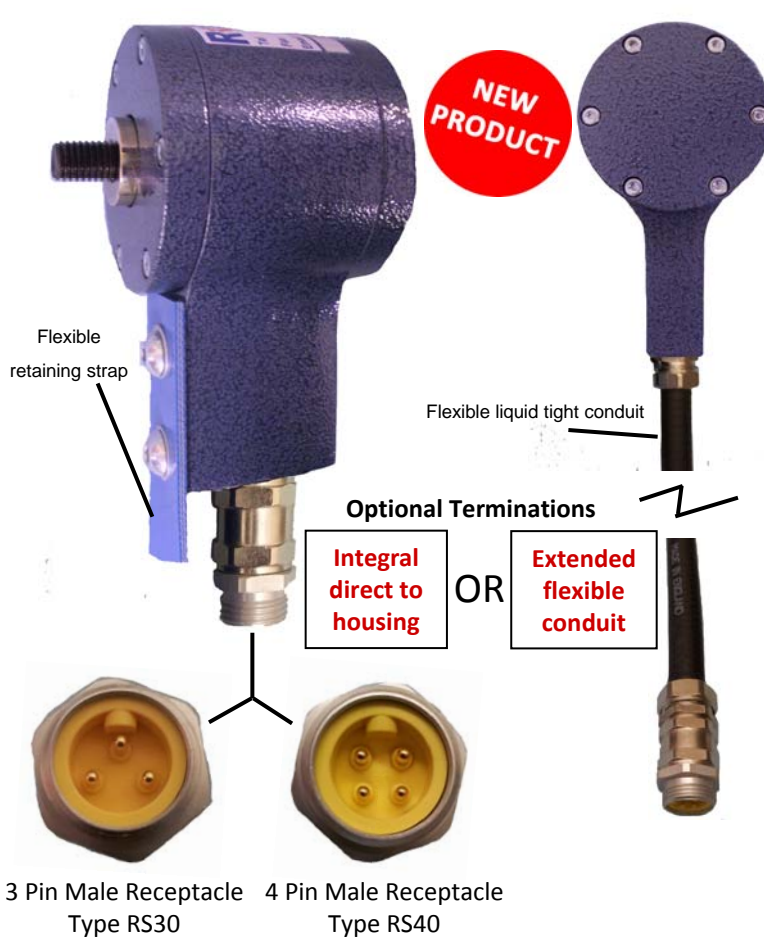
AE 2000-RS Series Aluminium Body

HEAVY DUTY – END OF SHAFT

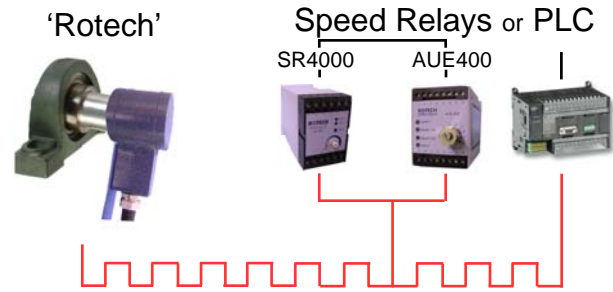
The AE 2000-RS series of Rotech shaft mounted motion sensors & encoders are manufactured in an extremely tough and durable aluminium casting with an industrial powder coated finish as well as being fitted with the Brad® Quick connectivity range of 3 & 4 pin receptacles for easy on site electrical termination.

Installation is simple and easy, just one 12mm threaded hole in the end of the shaft being monitored or fitted using the unique “Mag-Con” magnetic connector as shown below.

A wide range of number of pulses per revolution are available together with AC and DC electrical outputs. Quick connectivity using the standard Brad® Mini – Change® Connectors as shown below.



APPLICATION EXAMPLE:



FOR MONITORING:

- Speed
- Distance
- Direction
- Belt slip
- Shaft stopped
- Underspeed
- Overspeed
- Safety guards interlocking

FEATURES:

- Totally self contained (no guards required)
- Maintenance free for maximum reliability
- 1 to 1000 pulses per revolution
- Environment ingress-IP67
- -25 to +70, 100, 125, 150 deg Celsius versions available



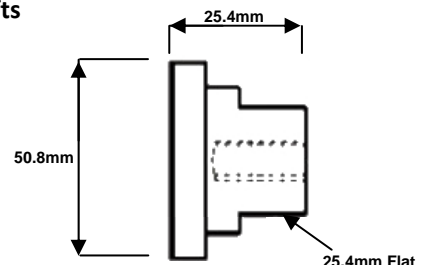
MAG-CON

MAGNETIC SHAFT CONNECTOR

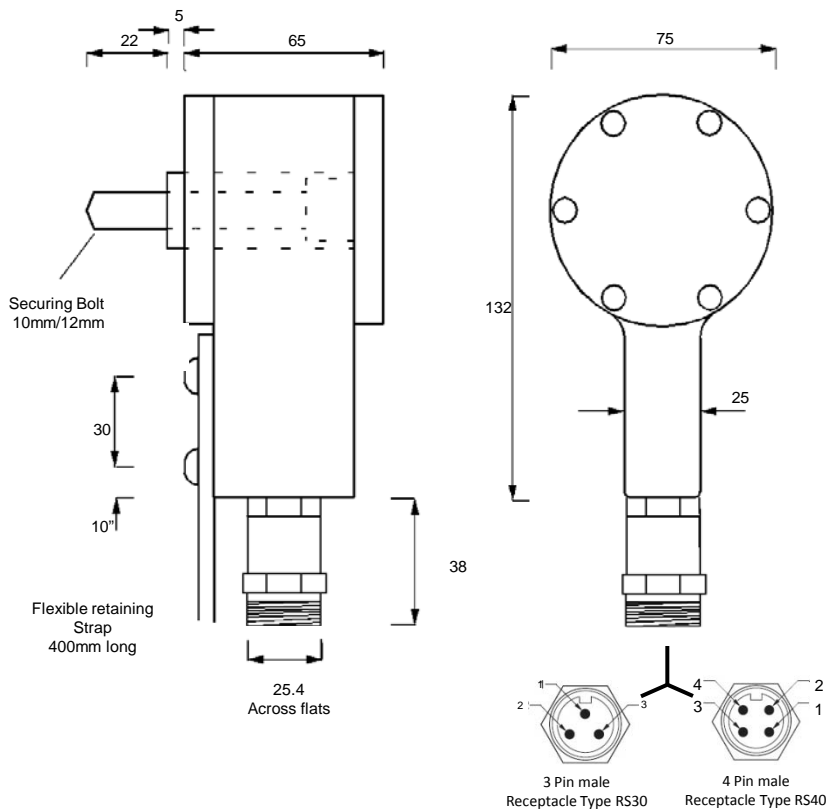
For Quick and Easy Installation of Rotech Shaft Mounted Sensors & Encoders.

Simply attaches to existing shafts

IMPORTANT NOTE:
MAXIMUM OPERATING SPEED IS 300RPM
RECOMMENDED MINIMUM
SHAFT DIAMETER FOR FITTING=35MM



Dimensions/Installation/Electrical Terminations



RS30/RS40 Connection options available

Female Chassis/Conduit Plug

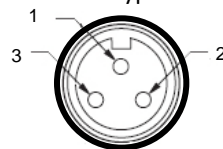


Female Cable Plug

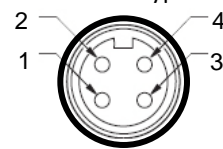


Cable Plug Views

3 Pin Female Connector Type RS30



4 Pin Female Connector Type RS40



Refer to electrical outputs below for pins designation

Cable Cores Identification

RS30

1. Black
2. Brown
3. Blue

RS40

1. Brown
2. Black
3. White
4. Blue

Dimensions shown in Millimetres

Available Pulse Rates (PPR)

1,2,4,5,6,8,10,12,16,20,30,32,40,50,60,100,120,180,240,250,300,360,500,1000 (Dependent Upon Output Type)

Electrical Outputs

<p>Type Z (2 Wire Non Polarized) 10-30Vdc</p> <p>RS30</p> <p>Max frequency = 1500Hz</p>	<p>Type E (N.P.N) 10-30Vdc Current sink</p> <p>RS40</p> <p>Max frequency = 600Hz</p>	<p>Type E2 (P.N.P) 10-30Vdc Current source</p> <p>RS40</p> <p>Max frequency = 600Hz</p>	<p>Type E3 (N.P.N + P.N.P - 3 wire) 10-30Vdc Bi-polar - Current sink/source</p> <p>RS40</p> <p>Max frequency = 1000Hz</p>
<p>Type E4 (N.P.N + P.N.P - 2 Wire) 10-30Vdc Bi-polar - Current sink/source</p> <p>RS30</p> <p>Max frequency = 1300Hz</p>	<p>Type W 20-240V AC/DC 50/60Hz (1 to 30 PPR only)</p> <p>RS30</p> <p>Note Minimum operating current = 5mA</p> <p>Max frequency = 25Hz (AC) 1000Hz (DC)</p>	<p>Type N (Namur) 8-2 Vdc (1KΩ) Intrinsically safe circuits</p> <p>RS30</p> <p>The voltage and current characteristics of NAMUR sensor outputs are so low that they can be safely used in explosive environments. The power limitation is implemented in the corresponding equipment. This means that the circuit containing a NAMUR proximity sensor is only intrinsically safe if it is supplied via a corresponding isolating amplifier. Contact Rotech Systems for details of amplifiers available.</p> <p>ATEX</p> <p>7.5 - 30 Vdc when used outside hazardous areas</p> <p>Max frequency = 2000Hz</p>	



Tel : +44 (0)151 356 2322 Website: www.rotechsystems.co.uk
 Fax: +44 (0)151 356 2437 Email: sales@rotechsystems.co.uk

