

RFID READER

13.56MHz Reader/Writer

SL502

User Manual

Version 1.0

Dec 2018

StrongLink

CONTENT

1. GENERAL INFORMATION	5
2. TYPES AND EXPLANATION.....	6
3. CONNECTING TO PC.....	6
4. DEMO.....	7
4.1 ONLINE	7
4.2 NTAG203	8
4.3 ULTRALIGHT.....	8
4.4 ULTRALIGHT C.....	8
4.5 MIFARE_1K (STD S50).....	9
4.6 MIFARE_4K (STD S70).....	9
4.7 MIFARE_PROX	10
4.8 TRH1064	10
4.10 SRIX4K	11
4.11 AT88RF020.....	12
4.12 ISO14443B-4 PROTOCOL SMART CARD	12
4.13 I.CODE SLI	13
4.14 TAG_IT	13
4.15 SRF55V02P	14
4.16 SRF55V10P	14
4.17 PASS_THROUGH	15
5. DLL INFORMATION.....	16
5.1 SYSTEM FUNCTION	16
5.1.1 INT WINAPI LIB_VER	16
5.1.2 INT WINAPI RF_INIT_COM.....	16
5.1.3 INT WINAPI RF_CLOSEPORT	16
5.1.4 INT WINAPI RF_GET_MODEL.....	16
5.1.5 INT WINAPI RF_INIT_DEVICE_NUMBER	16
5.1.7 INT WINAPI RF_INIT_TYPE	17
5.1.8 INT WINAPI RF_ANTENNA_STA	17
5.1.9 INT WINAPI RF_LIGHT	17
5.1.10 INT WINAPI RF_BEEP	17
5.2 DES FUNCTION.....	18
5.2.1 INT WINAPI DES_ENCRYPT.....	18
5.2.2 INT WINAPI DES_DECRYPT.....	18
5.3 ISO14443A FUNCTION.....	18
5.3.1 UltraLight	18
5.3.1.1 INT WINAPI RF_REQUEST	18

5.3.1.2 INT WINAPI RF_UL_SELECT	19
5.3.1.3 INT WINAPI RF_M1_READ	19
5.3.1.4 INT WINAPI RF_UL_WRITE	19
5.3.1.5 INT WINAPI INT RF_UC_AUTHENTICATION.....	19
5.3.1.6 INT WINAPI RF_UC_CHANGEKEY	20
5.3.1.7 INT WINAPI RF_HALT	20
5.3.2 Mifare Class	21
5.3.2.1 INT WINAPI RF_REQUEST	21
5.3.2.2 INT WINAPI RF_ANTICOLL	21
5.3.2.3 INT WINAPI RF_SELECT	21
5.3.2.4 INT WINAPI RF_M1_AUTHENTICATION2.....	22
5.3.2.5 INT WINAPI RF_M1_READ	22
5.3.2.6 INT WINAPI RF_M1_WRITE.....	22
5.3.2.7 INT WINAPI RF_M1_INITVAL	22
5.3.2.8 INT WINAPI RF_M1_READVAL	23
5.3.2.9 INT WINAPI RF_M1_INCREMENT	23
5.3.2.10 INT WINAPI RF_M1_DECREMENT.....	23
5.3.2.11 INT WINAPI RF_M1_RESTORE.....	23
5.3.2.12 INT WINAPI RF_M1_TRANSFER.....	23
5.3.2.13 INT WINAPI RF_HALT	24
5.3.3 Mifare_DESFire	24
5.3.3.1 INT WINAPI RF_DESFIRE_RST	24
5.3.3.2 INT WINAPI RF_COS_COMMAND.....	24
5.3.4 Mifare_ProX	25
5.3.4.1 INT WINAPI RF_TYPE_RST.....	25
5.3.4.2 INT WINAPI RF_COS_COMMAND.....	25
5.3.4.3 INT WINAPI RF_CL_DESELECT	25
5.3.5 SHC1102.....	25
5.3.5.1 INT WINAPI RF_REQUEST	25
5.3.5.2 INT WINAPI RF_SHC1102_AUTH.....	26
5.3.5.3 INT WINAPI RF_SHC1102_READ	26
5.3.5.4 INT WINAPI RF_SHC1102_WRITE.....	26
5.4 ISO14443B FUNCTION.....	27
5.4.1 THR1064	27
5.4.1.1 INT WINAPI RF_TYPEB_RST	27
5.4.1.2 INT WINAPI RF_THR1064_READ	27
5.4.1.3 INT WINAPI RF_THR1064_WRITE.....	27
5.4.1.4 INT WINAPI RF_THR1064_CHECK	27
5.4.2 AT88RF020	28
5.4.2.1 INT WINAPI RF_TYPEB_RST	28
5.4.2.2 INT WINAPI RF_AT020_CHECK.....	28
5.4.2.3 INT WINAPI RF_AT020_COUNT.....	28
5.4.2.4 INT WINAPI RF_AT020_READ	28
5.4.2.5 INT WINAPI RF_AT020_WRITE.....	29

5.4.2.6 INT WINAPI RF_AT020_LOCK	29
5.4.2.7 INT WINAPI RF_AT020_DESELECT	29
5.4.3 SR176SRIX4K	29
5.4.3.1 INT WINAPI RF_ST_SELECT	29
5.4.3.2 INT WINAPI INT_RF_SR176_READBLOCK	29
5.4.3.3 INT WINAPI INT_RF_SR176_WRITEBLOCK	30
5.4.3.4 INT WINAPI INT_RF_SR176_PROTECTBLOCK	30
5.4.3.5 INT WINAPI INT_RF_SRIX4K_GETUID	30
5.4.3.6 INT WINAPI INT_RF_SRIX4K_READBLOCK	30
5.4.3.7 INT WINAPI INT_RF_SRIX4K_WRITEBLOCK	31
5.4.3.8 INT WINAPI INT_RF_SRIX4K_PROTECTBLOCK	31
5.4.3.9 INT WINAPI RF_ST_COMPLETION	31
5.4.4 TYPE_B SmartCard	32
5.4.4.1 INT WINAPI RF_TYPEB_RST	32
5.4.4.2 INT WINAPI RF_COS_COMMAND	32
5.4.4.3 INT WINAPI RF_CL_DESELECT	32
5.5 ISO15693 FUNCTION	33
5.5.1 INT WINAPI ISO15693_INVENTORY	33
5.5.2 INT WINAPI ISO15693_INVENTORYS	33
5.5.3 INT WINAPI ISO15693_GET_SYSTEM_INFORMATION	33
5.5.4 INT WINAPI ISO15693_SELECT	34
5.5.5 INT WINAPI ISO15693_RESET_TO_READY	34
5.5.6 INT WINAPI ISO15693_STAY_QUIET	34
5.5.7 INT WINAPI ISO15693_GET_BLOCK_SECURITY	34
5.5.8 INT WINAPI ISO15693_READ	35
5.5.9 INT WINAPI ISO15693_WRITE	35
5.5.10 INT WINAPI ISO15693_LOCK_BLOCK	36
5.5.11 INT WINAPI ISO15693_WRITE_AFI	36
5.5.12 INT WINAPI ISO15693_LOCK_AFI	36
5.5.13 INT WINAPI ISO15693_WRITE_DSFD	37
5.5.14 INT WINAPI ISO15693_LOCK_DSFD	37
5.6 FUNCTION OF INFINEON ELECTRIC TAG	38
5.6.1 INT WINAPI SRF55VP_READ	38
5.6.2 INT WINAPI SRF55VP_WRITEBYTE	38
5.6.3 INT WINAPI SRF55VP_WRITE	38
5.6.4 INT WINAPI SRF55VP_WRITE_REREAD	39
5.7 PASS THROUGH FUNCTION	39
5.7.1 INT WIN API RF_TRANSCEIVE1	39

1. GENERAL INFORMATION



- TCP/IP Interface
- 5.5 ~ 12.5VDC Operating
- 13.56MHz RF Operating Frequency
- ISO14443A ISO1443B ISO15693 Protocols
- Operating Temperature Range: -20°C ~ +50°C
- Storage Temperature Range: -25°C ~ +60°C
- Dimension: 110 × 81 × 26 mm
- Weight: 100g

2. TYPES AND EXPLANATION

SL502 series readers are in accord with ISO14443A, ISO14443B and ISO15693 protocols, and are classified as following sheet

	SL502L	SL502A	SL502D	SL502F
ISO14443A	√	√		√
ISO14443B				√
ISO15693			√	√

NOTICE: The difference between SL502L and SL502A

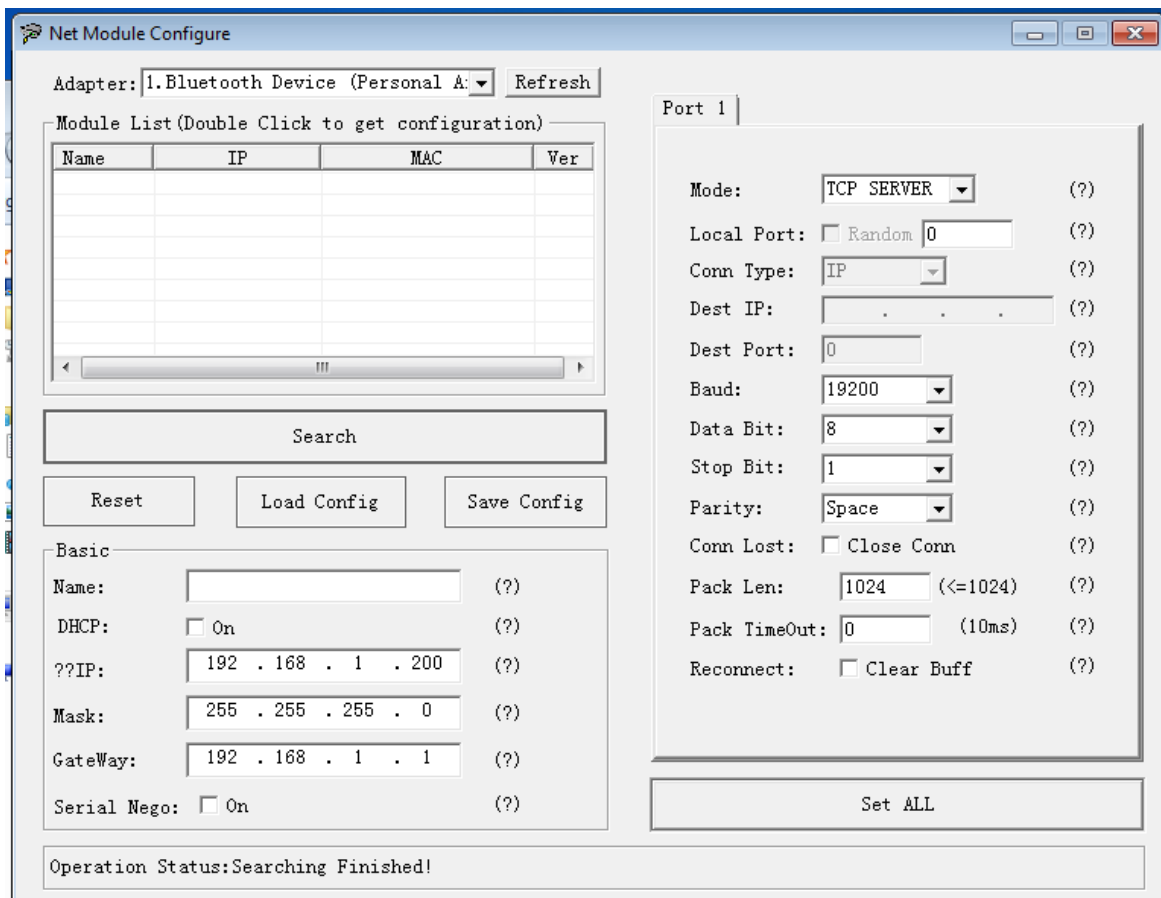
SL502L supported cards: Mifare_1k, Mifare_4k, UltraLight

SL502A supported cards: Mifare_1k, Mifare_4k, UltraLight, Mifare_ProX

3. CONNECTING TO PC

Connect SL502 to the tcp/ip port of PC, and need to use NetModuleConfig.exe to configure the TCP/IP connector. Set the reader connection mode:

- 1: search the reader and double dip one module of module list
- 2: entry the IP number / Mask and gateway number
- 3: Select the way of mode for example TCP_SERVER mode and entry the Baud :19200, data bit :8 ,stop bit 1, parity: space, pack len :1024
- 4: dip the button set all to complete the reader connector parameter set.

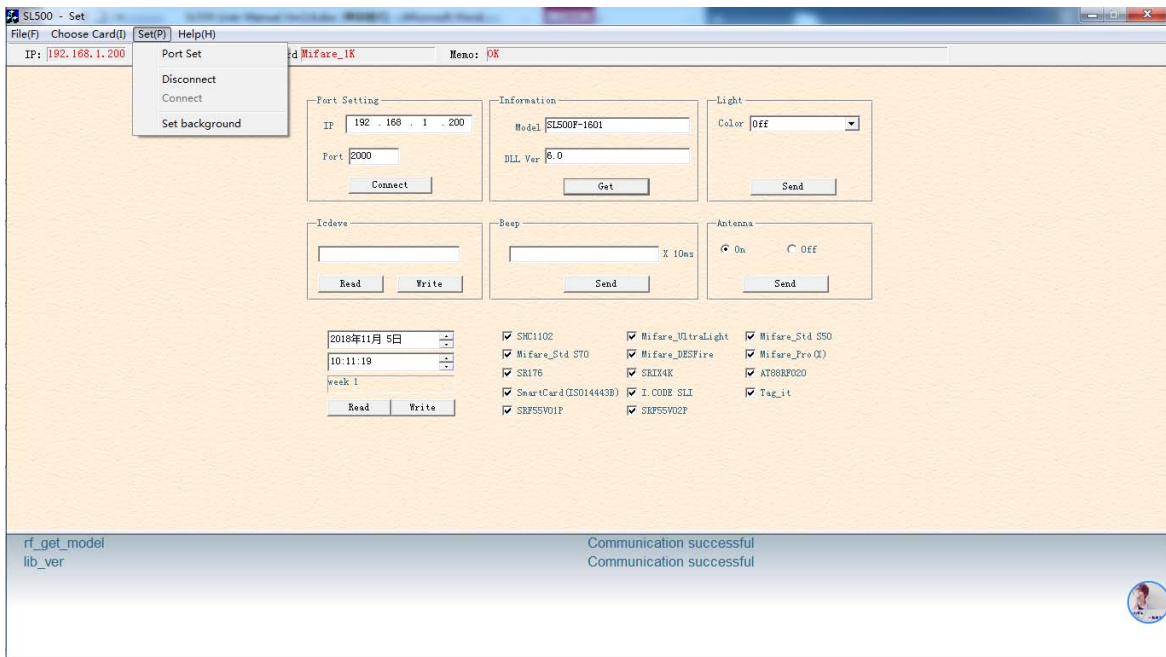


4. DEMO

This software run on Win32/Win64 system, and need 1024 x 768 dpi at least

4.1 Online

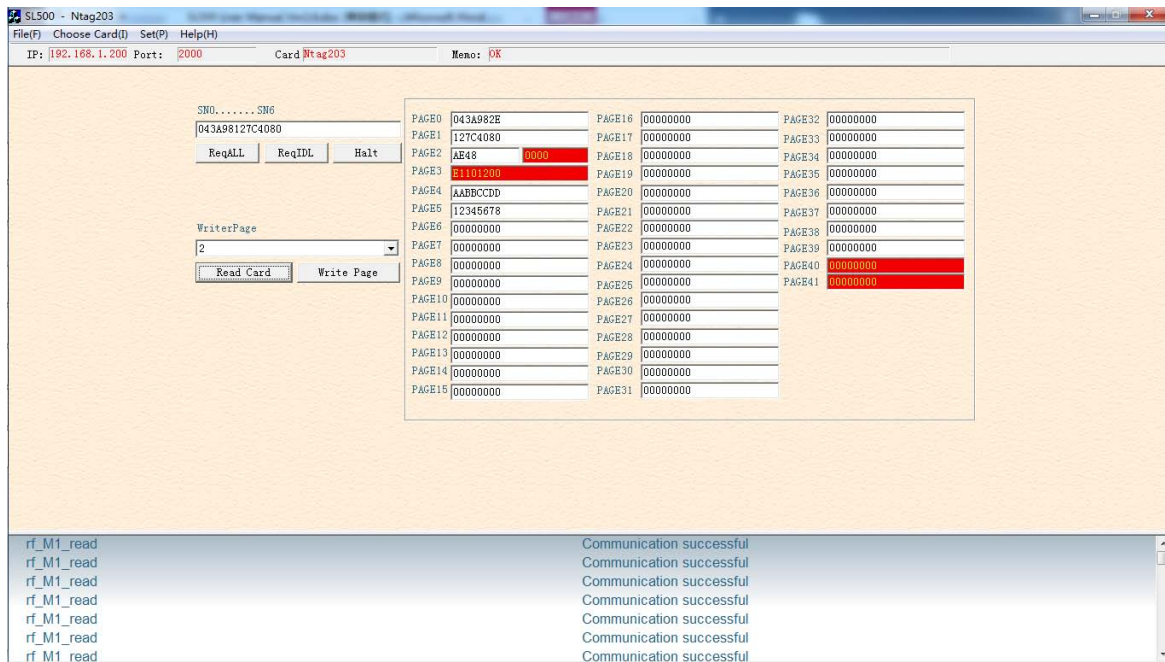
Choose the correct IP number and port, click [Connect] button to connect the Reader to PC. Click [Read] the product information button, you can check the specific type of the Reader and the supported cards.



4.2 NTAG203

Click [ReqALL] button to obtain the card serial number.

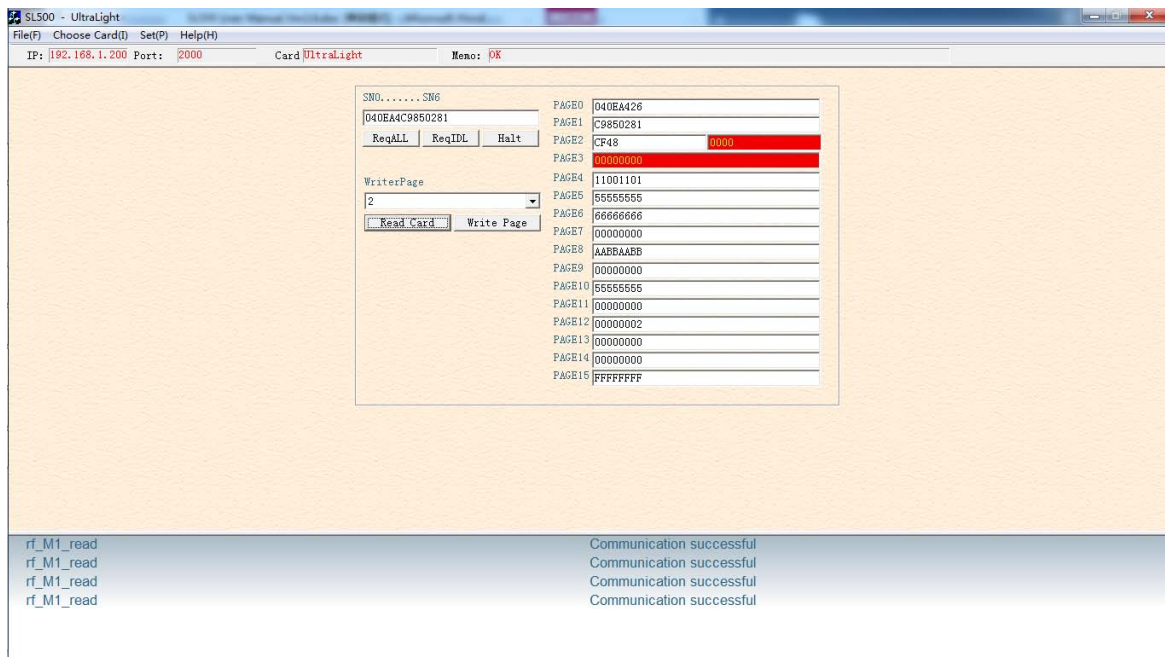
Choose the corresponding address to read/write the card



4.3 UltraLight

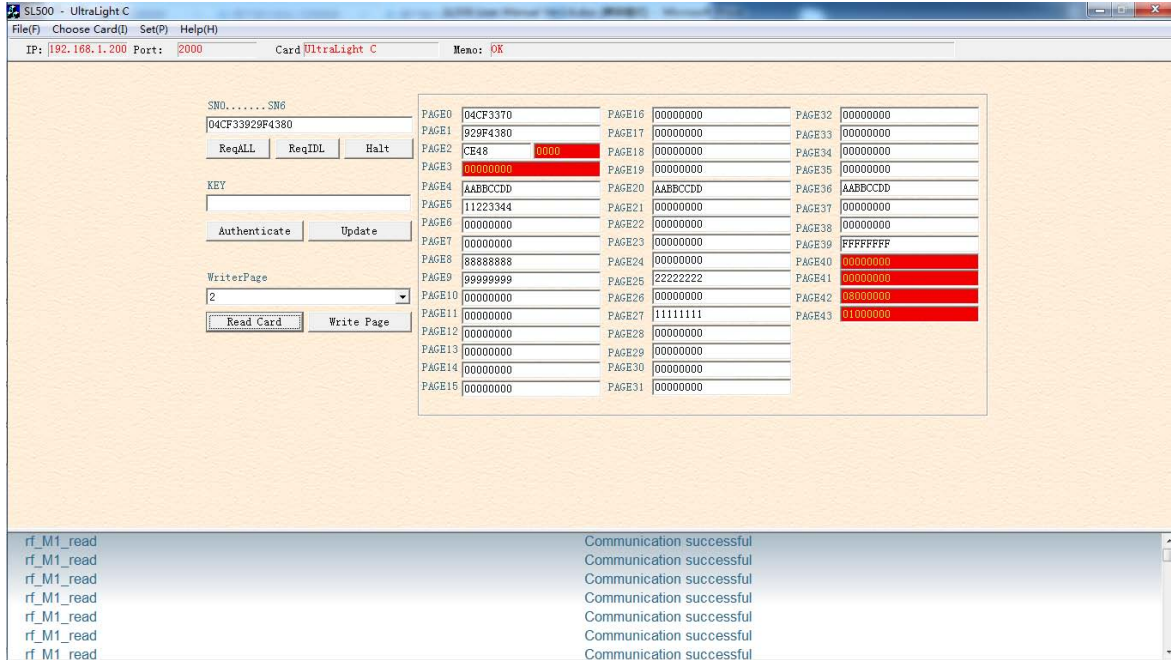
Click the [Request] button to obtain the card Serial Number.

Choose the corresponding address to read/write the card.



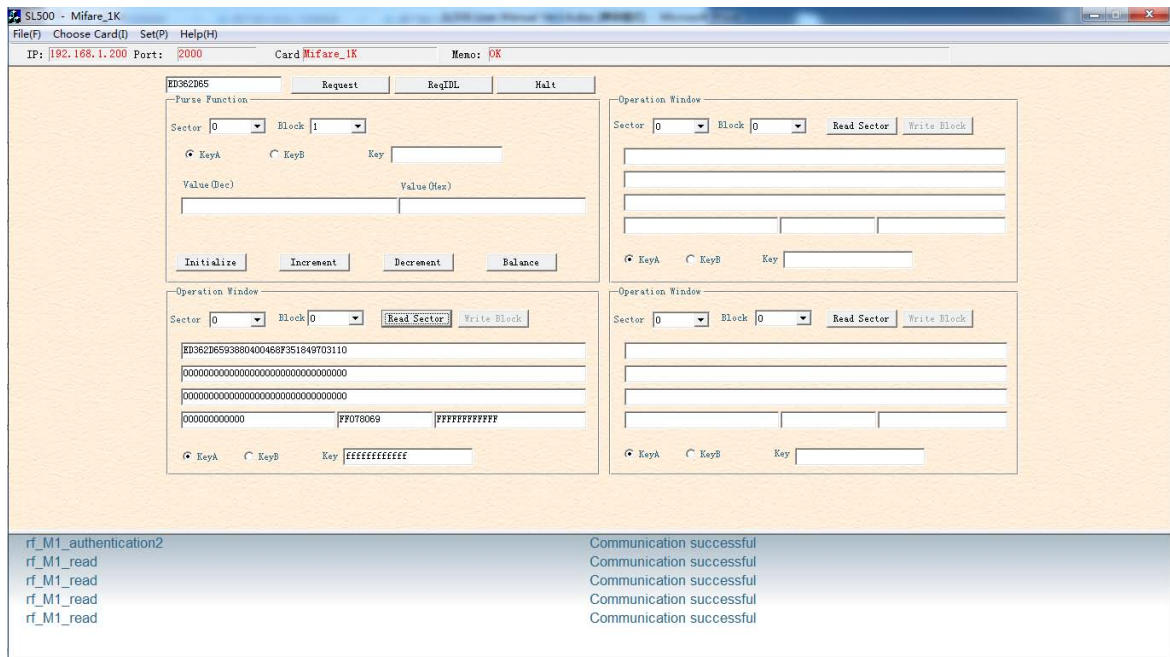
4.4 UltraLight C

Click the [Request] button to obtain the card Serial Number.
 Choose the corresponding address to read/write the card



4.5 Mifare_1k (STD S50)

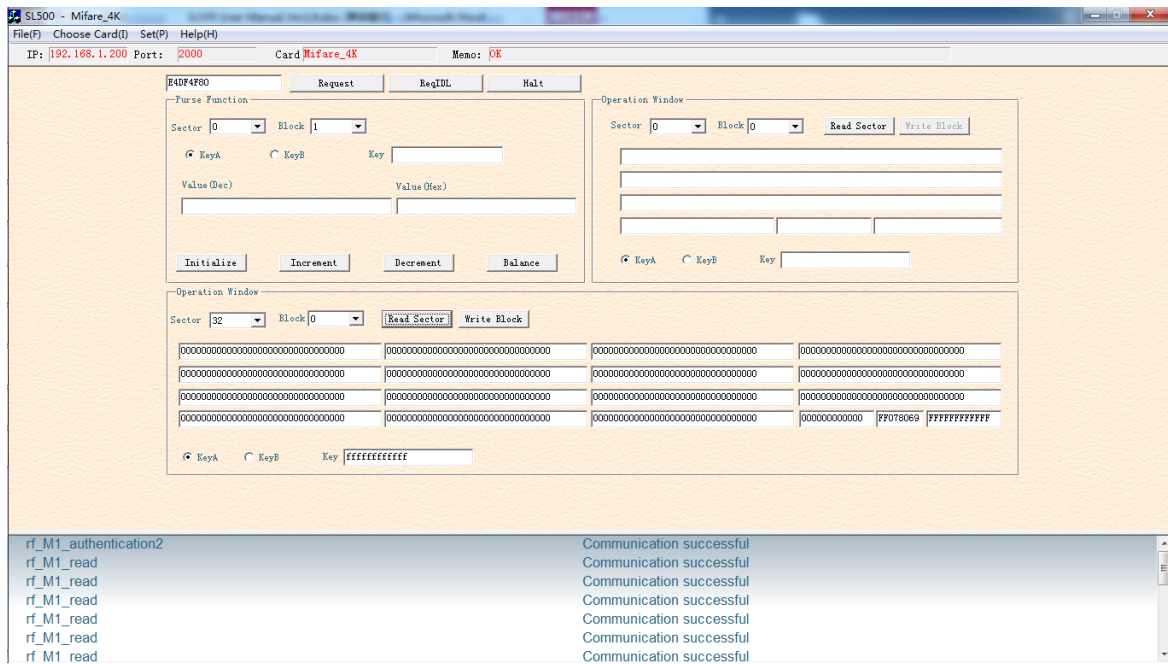
Click the [Request] button to obtain the card serial number.
 Input the correct password to read, write, increase or decrease the card.



4.6 Mifare_4k (STD S70)

Click the [Request] button to obtain the card serial number.

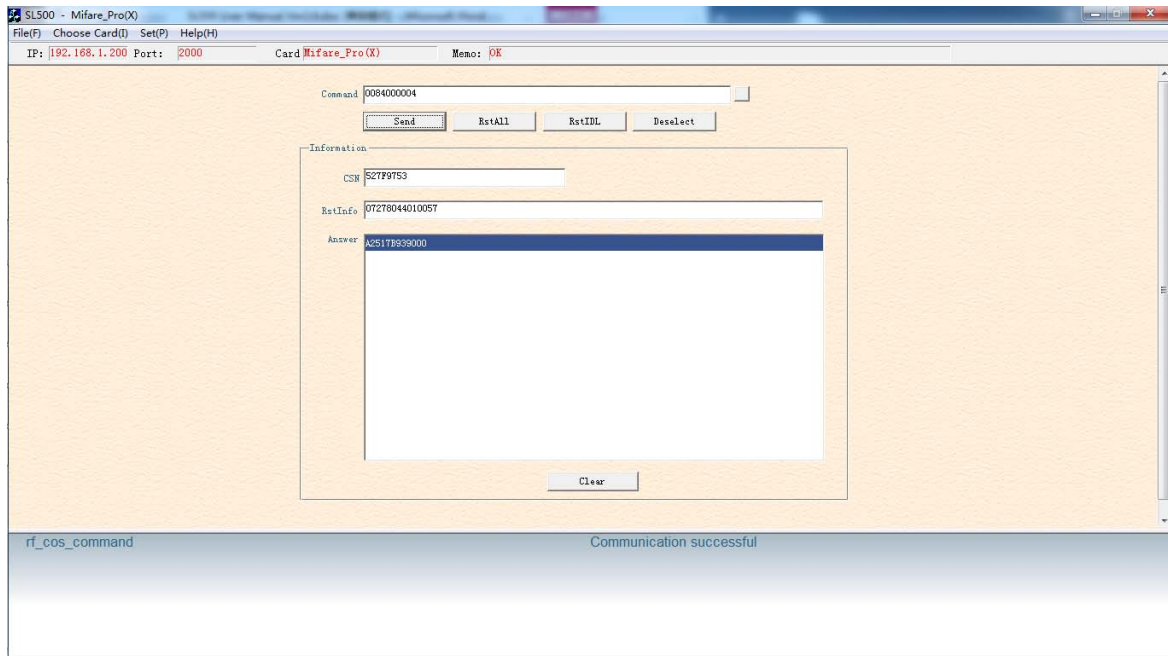
Input the correct password to read, write, increase or decrease the card.



4.7 Mifare_ProX

Click [Reset] button to obtain the serial number and the reset information of the card according to ISO14443-4 protocol.

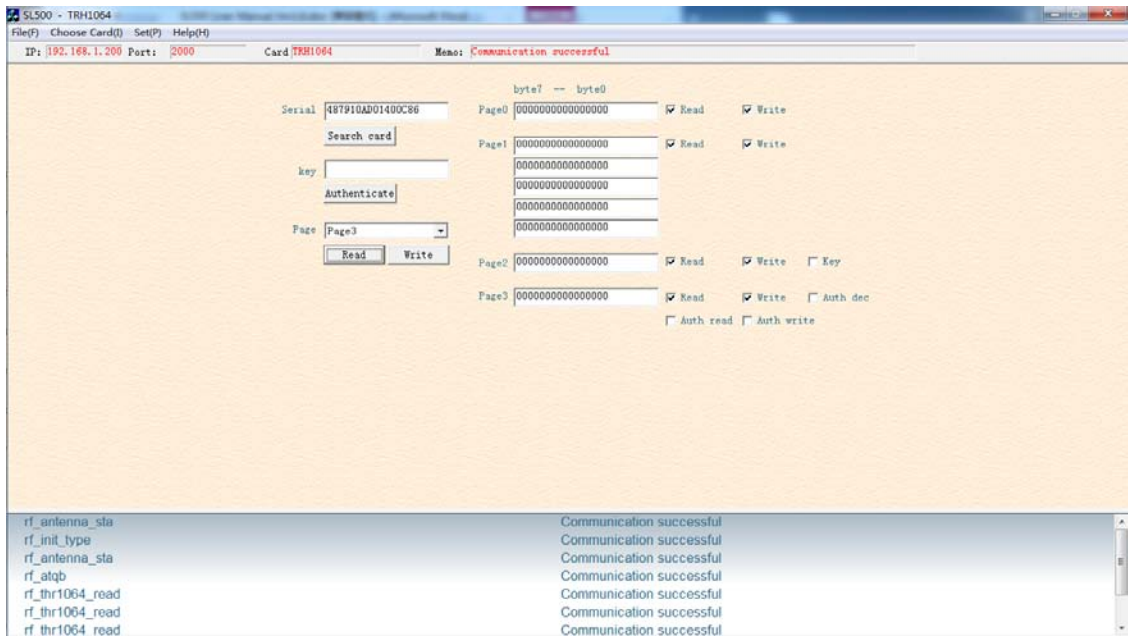
Input the COS command, click [Send] button to commute data to card.



4.8 TRH1064

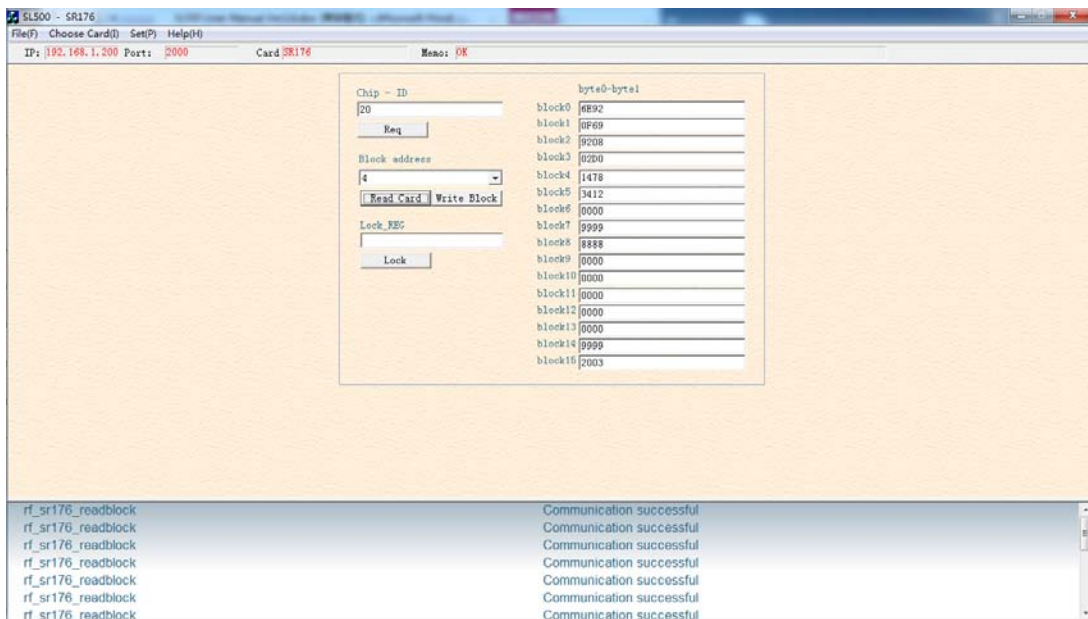
Click [Request] button to obtain the card serial number.

Hereafter can read, write and validate.



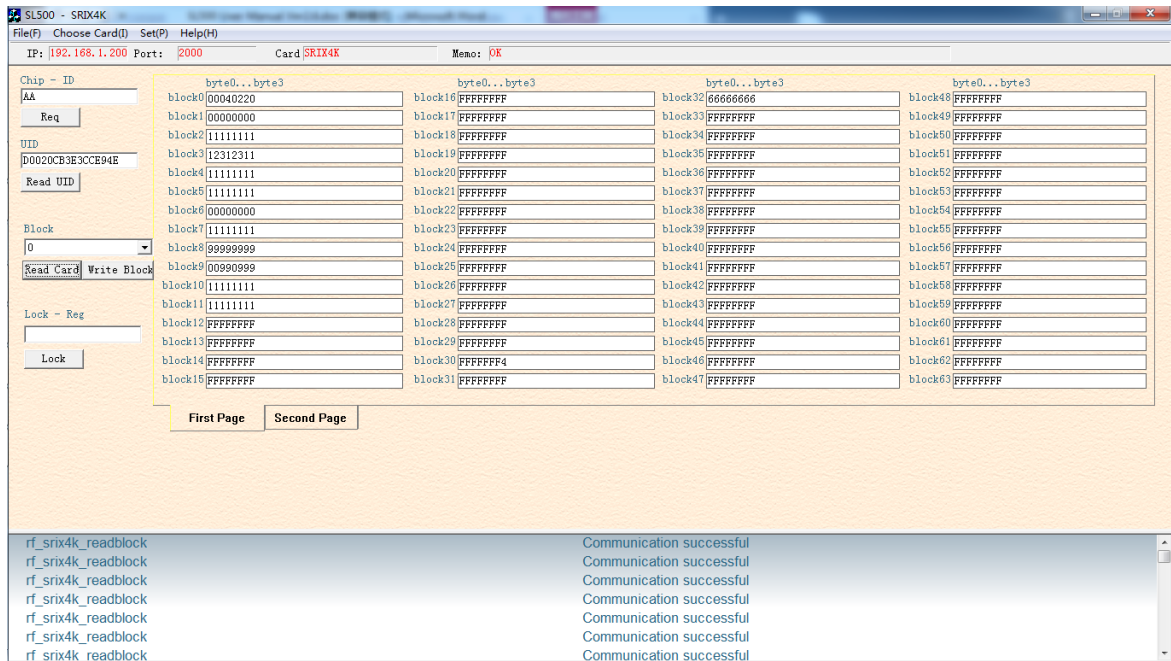
4.9 SR176

Click [Req] button to obtain the ID number of the card.
Then you can read, write and lock blocks of the card.



4.10 SR1X4K

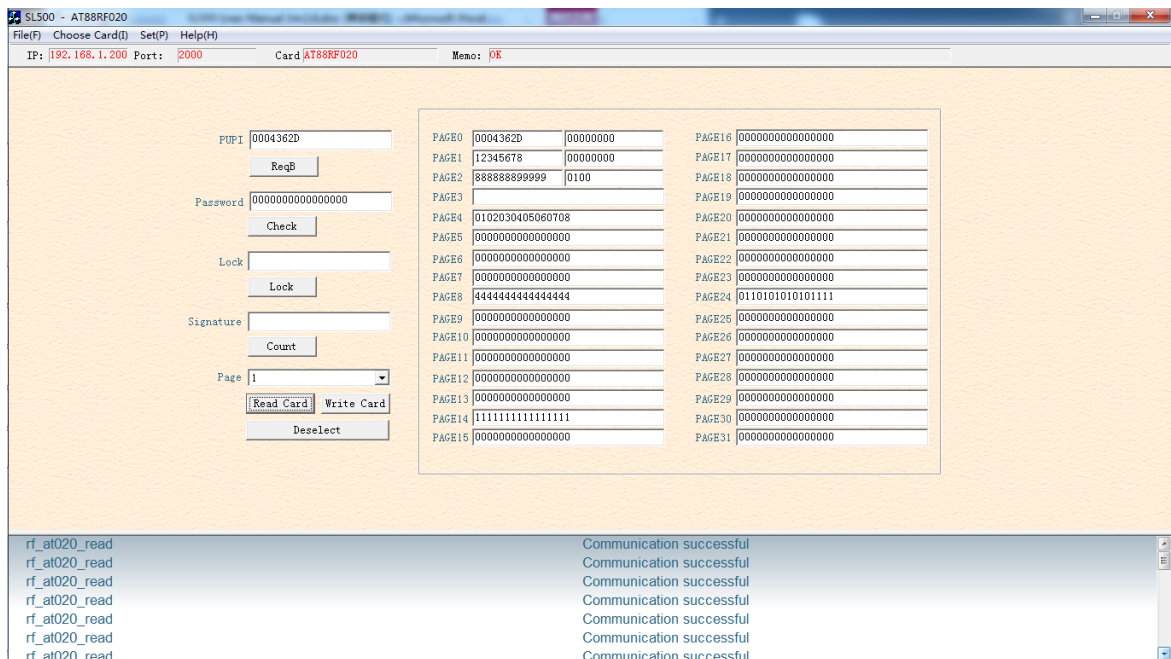
Click [Req] button to obtain the ID number of the card and click [Read UID] to obtain the UID of the card.
Then you can read, write and lock blocks of the card.



4.11 AT88RF020

Click [ReqB] button to obtain the serial number of the card.

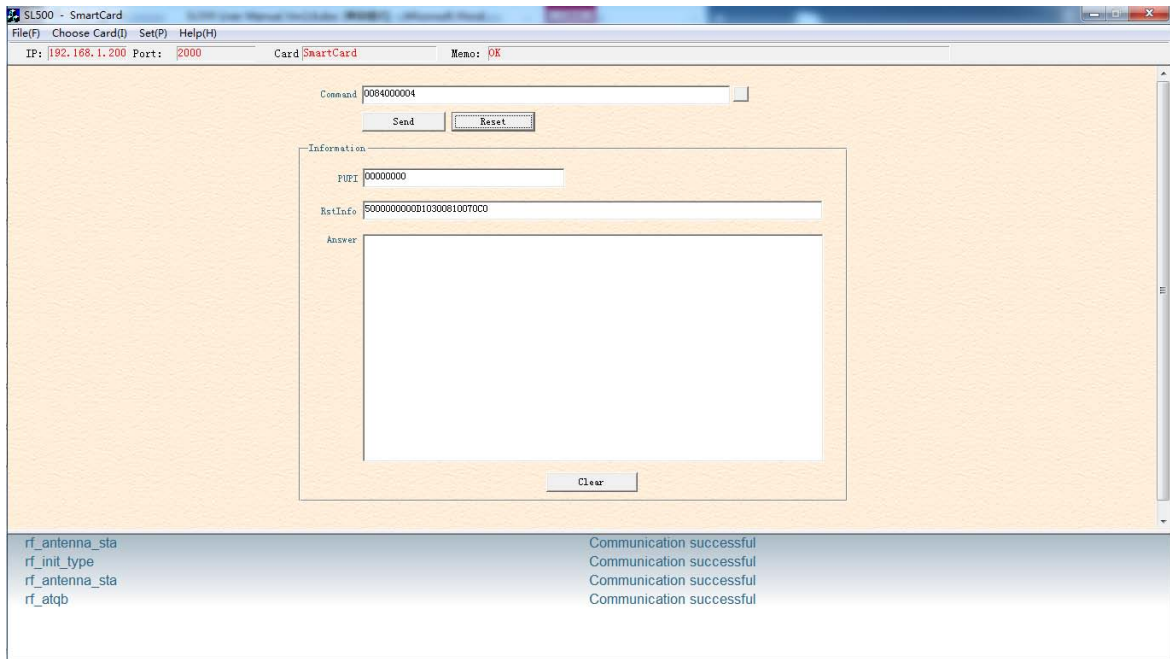
After check password, you can read, write, signature and lock blocks of the card.



4.12 ISO14443B-4 Protocol Smart Card

Click [Reset] button to obtain the serial number and the reset information of the card according to ISO14443-4 protocol.

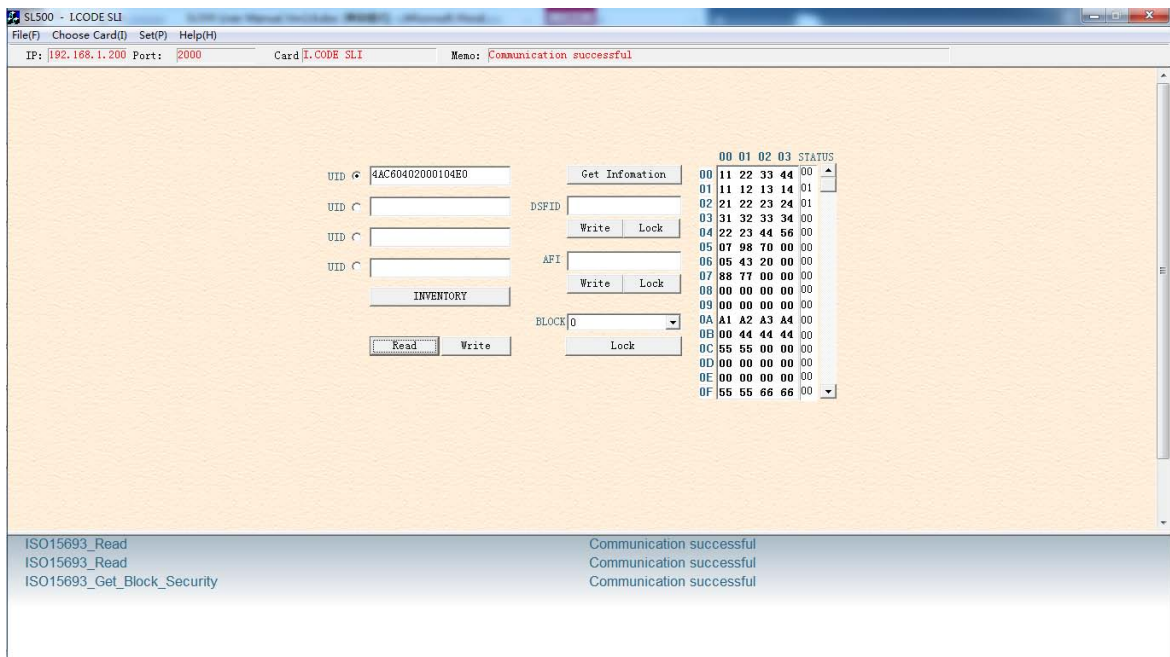
Input the COS command, click [Send] button to commute data to card.



4.13 I.CODE SLI

Click [INVENTORY] button to obtain the serial number of the card. You can operate 4 cards at most.

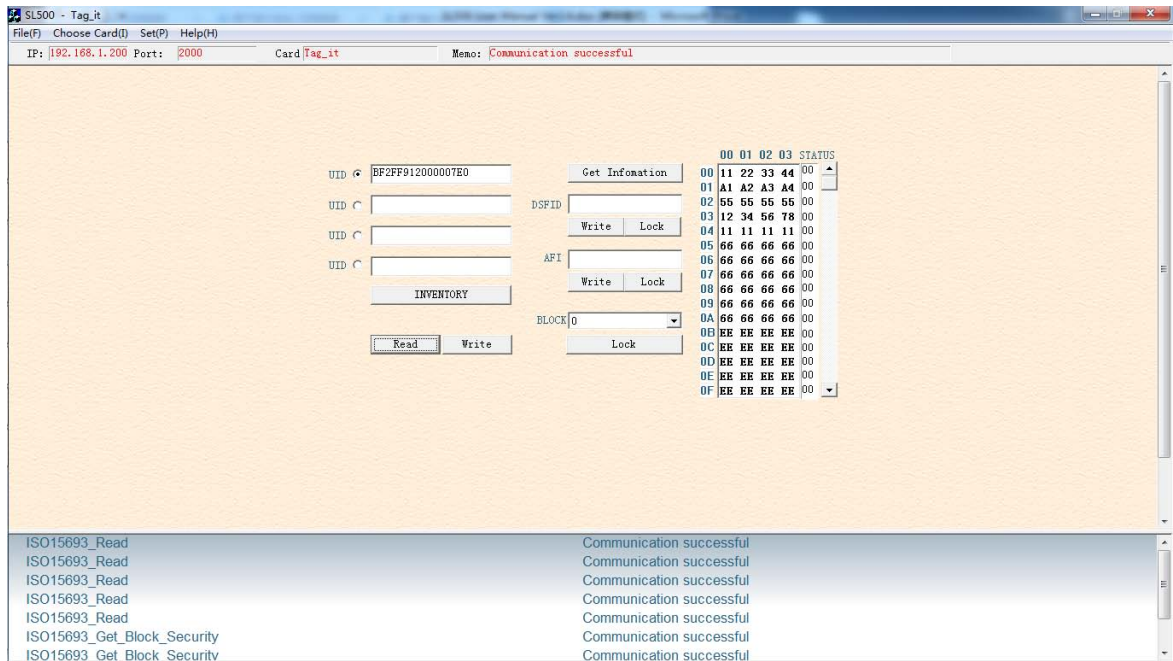
Choose certain card according to the UID to read or write.



4.14 Tag_IT

Click [INVENTORY] button to obtain the serial number of the card. You can operate 4 cards at most.

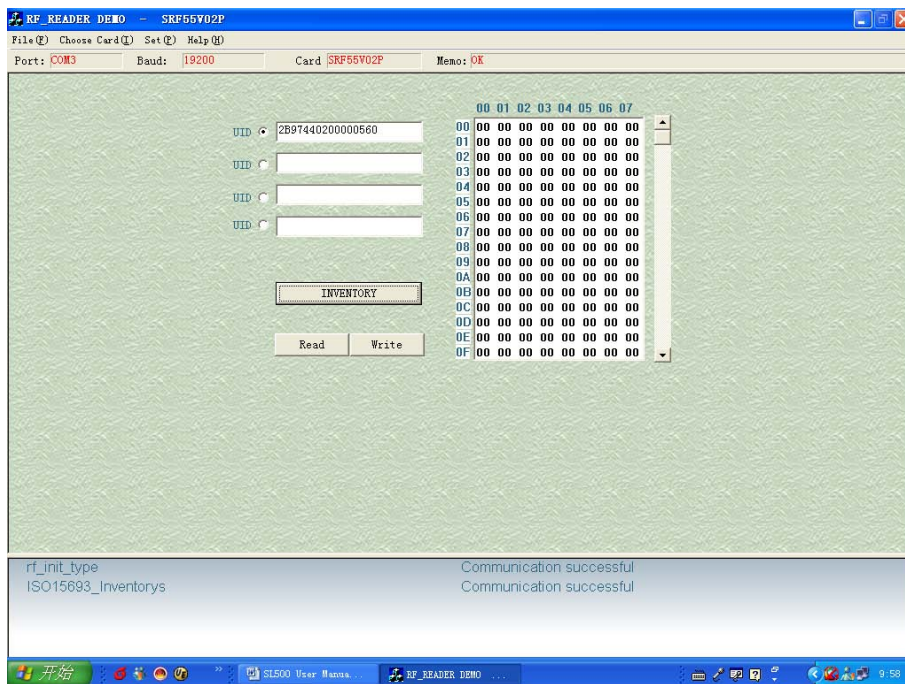
Choose certain card according to the UID to read/write.



4.15 SRF55V02P

Click [INVENTORY] button to obtain the serial number of the card. You can operate 4 cards at most.

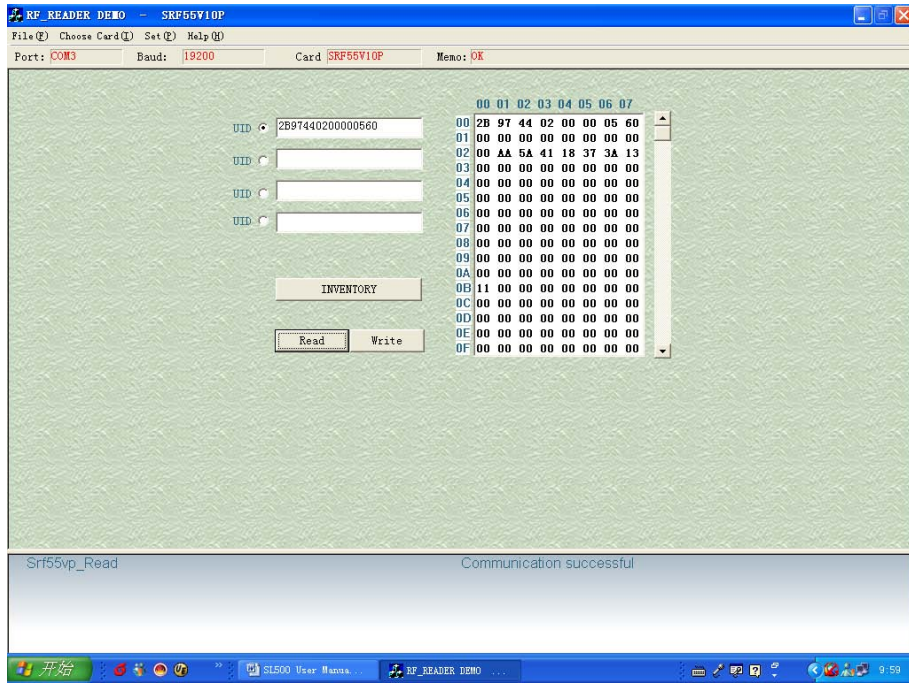
Choose certain card according to the UID to read/write.



4.16 SRF55V10P

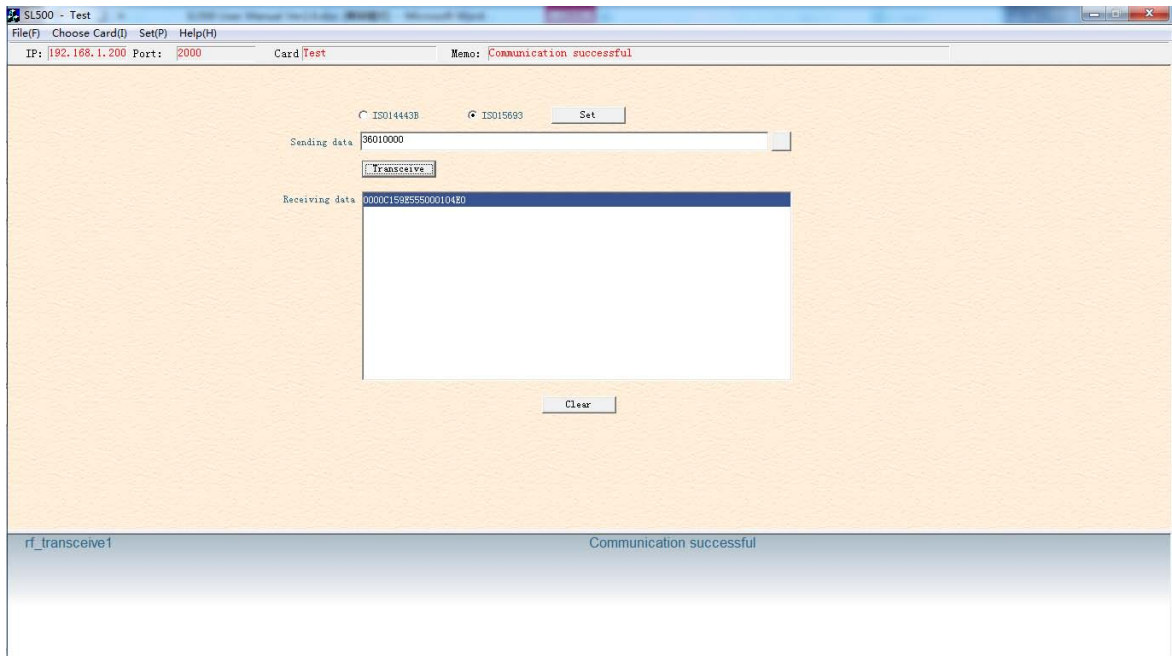
Click [INVENTORY] button to obtain the serial number of the card. You can operate 4 cards at most.

Choose certain card according to the UID to read/write.



4.17 Pass_Through

In this windows, input parameters according to ISO14443B and ISO15693 protocol, click [Transceive] button to get response data from tag
CRC bytes is auto managed by reader, it will not be contained in the stream



5. DLL INFORMATION

Declarations of all the functions can also be found in the head file in the SDK with DLL. All types of readers have system function and encrypt function. Whether readers support other functions depends on their specific types.

5.1 SYSTEM FUNCTION

5.1.1 INT WINAPI LIB_VER

Function: Get DLL Version
Prototype: int WINAPI lib_ver (unsigned int *pVer)
Parameter: pVer: [OUT] DLL version
Return: return 0 if successful

5.1.2 INT WINAPI RF_INIT_COM

Function: Connect
Prototype: int WINAPI rf_init_com (unsigned short port, unsigned short *ip_addr)
Parameter: port: [IN] network port number
ip_addr: [IN] ip address
Return 0 on success

5.1.3 INT WINAPI RF_CLOSEPORT

Function: Disconnect
Prototype: int WINAPI rf_ClosePort(void)
Return 0 on success

5.1.4 INT WINAPI RF_GET_MODEL

Function: Get Device Type
Prototype: int WINAPI rf_get_model (unsigned short icdev,
unsigned char *pVersion,
unsigned char *pLen)
Parameter: icdev: [IN] Device ID
pVersion: [OUT] response information
pLen: [OUT] length of response information
Return 0 on success

5.1.5 INT WINAPI RF_INIT_DEVICE_NUMBER

Function: Designate Device ID
Prototype: int WINAPI rf_init_device_number (unsigned short icdev)
Parameter: icdev: [IN] Device ID
Return 0 on success

5.1.6 INT WINAPI RF_GET_DEVICE_NUMBER

Function: Read Device ID

Prototype: int WINAPI rf_get_device_number (unsigned short *pIcdev)

Parameter: pIcdev: [OUT] response Device ID

Return 0 on success

5.1.7 INT WINAPI RF_INIT_TYPE

Function: Set Reader contactless working mode

Prototype: int WINAPI rf_init_type(unsigned short icdev, unsigned char type)

Parameter: icdev: [IN] Device ID

type: [IN] reader working mode

Return 0 on success

Explanation: this function is not effective to the readers only support single protocol.

type = 'A': set SL500 into ISO14443A mode

type = 'B': set ISO14443B mode

type = 'r': set AT88RF020 card mode

type = '1': set ISO15693 mode

5.1.8 INT WINAPI RF_ANTENNA_STA

Function: Manage RF Transmittal

Prototype: int WINAPI rf_antenna_sta (unsigned short icdev, unsigned char model)

Parameter: icdev: [IN] Device ID

model: [IN] transmittal state

Return 0 on success

Explanation: model = 0: turn off RF transmittal

model = 1: turn on RF transmittal

5.1.9 INT WINAPI RF_LIGHT

Function: Manage LED

Prototype: int WINAPI rf_light (unsigned short icdev, unsigned char color)

Parameter: icdev: [IN] Device ID

color: [IN] 0 = off

1 = red

2 = green

3 = yellow

Return 0 on success

5.1.10 INT WINAPI RF_BEEP

Function: beep

Prototype: int WINAPI rf_beep (unsigned short icdev, unsigned char msec)

Parameter: icdev: [IN] Device ID

msec: [IN] beep time, unit 10 MSEL

Return 0 on success

5.2 DES FUNCTION

5.2.1 INT WINAPI DES_ENCRYPT

Function: DES_Encrypt

```
Prototype: int WINAPI des_encrypt ( unsigned char *pSzOut,  
                                   unsigned char *pSzIn,  
                                   unsigned int   inlen,  
                                   unsigned char *pKey,  
                                   unsigned int   keylen)
```

Parameter: pSzOut: [OUT] ciphertext, bytes length equal to plaintext
pSzIn: [IN] plaintext
inlen: [IN] length of plaintext, integer times of 8 bytes
pKey: [IN] encrypt key
keylen: [IN] length of key, 8 bytes for single DES, 16 bytes for triple DES

Return 0 on success

5.2.2 INT WINAPI DES_DECRYPT

Function: DES_Decrypt

```
Prototype: int WINAPI des_decrypt ( unsigned char *pSzOut,  
                                    unsigned char *pSzIn,  
                                    unsigned int   inlen,  
                                    unsigned char *pKey,  
                                    unsigned int   keylen)
```

Parameter: pSzOut: [OUT] plaintext, bytes length equal to ciphertext
pSzIn: [IN] ciphertext
inlen: [IN] length of ciphertext, integer times of 8 bytes
pKey: [IN] encrypt key
keylen: [IN] length of key, 8 bytes for single DES, 16 bytes for triple DES

Return 0 on success

5.3 ISO14443A FUNCTION

5.3.1 UltraLight

5.3.1.1 INT WINAPI RF_REQUEST

Function: ReqA

```
Prototype: int WINAPI rf_request ( unsigned short icdev,  
                                   unsigned char  model,  
                                   unsigned short *pTagType)
```

Parameter: icdev: [IN] Device ID
model: [IN] REQ MODE
pTagType: [OUT] response data, chip type code

Return 0 on success

Annotation: mode = 0x26: REQ_STD

mode = 0x52: REQ_ALL

5.3.1.2 INT WINAPI RF_UL_SELECT

Function: Select UltraLight

Prototype: int WINAPI int rf_ul_select (unsigned short icdev,
 unsigned char *pSnr,
 unsigned char *pLen)

Parameter: icdev: [IN] Device ID
 pSnr: [OUT] response data, card unique serial number
 pLen: [OUT] length of response data

Return 0 on success

5.3.1.3 INT WINAPI RF_M1_READ

Function: MifareOne read

Prototype: int WINAPI rf_M1_read (unsigned short icdev,
 unsigned char block,
 unsigned char *pData,
 unsigned char *pLen)

Parameter: icdev: [IN] Device ID
 block: [IN] block absolute address
 pData: [OUT] response data from card
 pLen: [OUT] length of response data

Return 0 on success

Annotation: this function is also applicable for UltraLight card. Every page of UltraLight card has 4 bytes. After calling this function, return data of 4 consecutive pages.

5.3.1.4 INT WINAPI RF_UL_WRITE

Function: UltraLight Write

Prototype: int WINAPI int rf_ul_write (unsigned short icdev,
 unsigned char page,
 unsigned char *pData)

Parameter: icdev: [IN] Device ID
 page: [IN] UltraLight card page address , 0 ~ 0x0F
 pData: [IN] written data, 4 bytes

Return 0 on success

5.3.1.5 INT WINAPI INT RF_UC_AUTHENTICATION

Function: Authenticate Key for Ultralight C

Prototype: int WINAPI rf_UC_authentication(unsigned short icdev,
 unsigned char *pKey))

Parameter: icdev: [IN] Communication device identifier
 pKey: [IN] Key, 16 bytes

Return 0 on success

5.3.1.6 INT WINAPI RF_UC_CHANGEKEY

Function: Update key of Ultralight C

Prototype: int WINAPI rf_uc_changekey(unsigned short icdev, unsigned char *pKey)

Parameter: icdev: [IN] Communication device identifier

pKey: [IN] Key, 16 bytes

Return 0 on success

5.3.1.7 INT WINAPI RF_HALT

Function: TYPE_A card HALT

Prototype: int WINAPI rf_halt (unsigned short icdev)

Parameter: icdev: [IN] Communication device identifier

Return 0 on success

5.3.2 Mifare Class

5.3.2.1 INT WINAPI RF_REQUEST

Function: ReqA

Prototype: int WINAPI rf_request (unsigned short icdev,
 unsigned char model,
 unsigned short *pTagType)

Parameter: icdev: [IN] Device ID
 model: [IN] REQ MODE
 pTagType: [OUT] response data, chip type code

Return 0 on success

Annotation: mode = 0x26: REQ_STD

 mode = 0x52: REQ_ALL

5.3.2.2 INT WINAPI RF_ANTICOLL

Function: Mifare card Anticollision

Prototype: int WINAPI rf_anticoll (unsigned short icdev,
 unsigned char bcnt,
 unsigned char *pSnr,
 unsigned char *pLen)

Parameter: icdev: [IN] Device ID
 bcnt: [IN] must be 4
 pSnr: [OUT] response data from card, unique serial number
 pLen: [OUT] length of response data

Return: return 0 if successful

5.3.2.3 INT WINAPI RF_SELECT

Function: Mifare card Selecting

Prototype: int WINAPI rf_select (unsigned short icdev,
 unsigned char *pSnr,
 unsigned char snrLen,
 unsigned char *pSize)

Parameter: icdev: [IN] Device ID
 pSnr: [IN] card unique serial number
 snrLen: [IN] length of pSnr
 pSize: [OUT] response data from card, capacity code

Return 0 on success

Annotation: card will be on active estate after received this command, only one TYPE_A card on active estate at the same influence range at same time.

5.3.2.4 INT WINAPI RF_M1_AUTHENTICATION2

Function: Mifare_Std Authenticate

```

Prototype: int WINAPI rf_M1_authentication2 ( unsigned short  icdev,
                                             unsigned char  model,
                                             unsigned char  block,
                                             unsigned char  *pKey)

```

```

Parameter: icdev:  [IN]  Device ID
           model:  [IN]  key validate mode
           block:  [IN]  block absolute address
           pKey:   [IN]  6 bytes password

```

Return 0 on success

Annotation: model = 0x60: use KeyA

model = 0x61: use KeyB

5.3.2.5 INT WINAPI RF_M1_READ

Function: MifareOne Read

```

Prototype: int WINAPI rf_M1_read ( unsigned short  icdev,
                                   unsigned char  block,
                                   unsigned char  *pData,
                                   unsigned char  *pLen)

```

```

Parameter: icdev:  [IN]  Device ID
           block:  [IN]  block absolute address
           pData:  [OUT] response data from card
           pLen:   [OUT] length of response data

```

Return 0 on success

5.3.2.6 INT WINAPI RF_M1_WRITE

Function: Mifare_Std Write

```

Prototype: int WINAPI rf_M1_write (unsigned short icdev,
                                   unsigned char  block,
                                   unsigned char *pData)

```

```

Parameter: icdev:  [IN]  Device ID
           block:  [IN]  block absolute address
           pData:  [IN]  written data, 16 bytes

```

Return 0 on success

5.3.2.7 INT WINAPI RF_M1_INITVAL

Function: Mifare_Std card Initialize Value

```

Prototype: int WINAPI rf_M1_initval ( unsigned short  icdev,
                                       unsigned char  block,
                                       long  value)

```

```

Parameter: icdev:  [IN]  Device ID
           block:  [IN]  block absolute address
           pValue: [IN]  initialize purse value at HEX format, low byte in former

```

Return 0 on success

5.3.2.8 INT WINAPI RF_M1_READVAL

Function: Mifare_Std Read Value

Prototype: int WINAPI rf_M1_readval (unsigned short icdev,
unsigned char block,
long *pValue)

Parameter: icdev: [IN] Device ID
block: [IN] block absolute address
pValue: [OUT] response value at HEX format, low byte in former

Return 0 on success

5.3.2.9 INT WINAPI RF_M1_INCREMENT

Function: Mifare purse increment

Prototype: int WINAPI rf_M1_increment (unsigned short icdev,
unsigned char block,
long value)

Parameter: icdev: [IN] Device ID
block: [IN] block absolute address
value: [IN] increase value at HEX format, low byte in former

Return 0 on success

5.3.2.10 INT WINAPI RF_M1_DECREMENT

Function: Mifare purse decrement

Prototype: int WINAPI rf_M1_decrement (unsigned short icdev,
unsigned char block,
long value)

Parameter: icdev: [IN] Device ID
block: [IN] block absolute address
value: [IN] decrease value at HEX format, low byte in former

Return 0 on success

5.3.2.11 INT WINAPI RF_M1_RESTORE

Function: Mifare_Std Restore

Prototype: int WINAPI rf_M1_restore (unsigned short icdev, unsigned char block)

Parameter: icdev: [IN] Device ID
block: [IN] block absolute address

Return 0 on success

5.3.2.12 INT WINAPI RF_M1_TRANSFER

Function: Mifare_Std Transfer

Prototype: int WINAPI rf_M1_transfer (unsigned short icdev, unsigned char block)

Parameter: icdev: [IN] Device ID
block: [IN] block absolute address

Return 0 on success

Annotation: this function only be transferred after increment, decrement and restore command

5.3.2.13 INT WINAPI RF_HALT

Function: Mifare Halt

Prototype: int WINAPI rf_halt (unsigned short icdev)

Parameter: icdev: [IN] Device ID

Return 0 on success

Annotation: card will exit active estate after received this command

5.3.3 Mifare_DESFire

5.3.3.1 INT WINAPI RF_DESFIRE_RST

Function: DESFire Reset

Prototype: int WINAPI rf_DESFire_rst (unsigned short icdev,
 unsigned char model,
 unsigned char *pData,
 unsigned char *pMsgLg)

Parameter: icdev: [IN] Device ID
 model: [IN] ReqA mode
 pData: [OUT] response data from card
 pMsgLg: [OUT] length of response data

Return 0 on success

Annotation: mode = 0x26: REQ_STD

mode = 0x52: REQ_ALL

pData = 7 bytes CSN + n bytes RATS according to ISO14443-4 protocol

5.3.3.2 INT WINAPI RF_COS_COMMAND

Function: DESFire data commutting

Prototype: int WINAPI rf_cos_command (unsigned short icdev,
 unsigned char *pCommand,
 unsigned char cmdLen,
 unsigned char *pData,
 unsigned char *pMsgLg)

Parameter: icdev: [IN] Device ID
 pCommand: [IN] COS command
 cmdLen: [IN] length of COS command
 pData: [OUT] response data from card
 pMsgLg: [OUT] length of response data

Return 0 on success

5.3.4 Mifare_ProX**5.3.4.1 INT WINAPI RF_TYPE_RST**

Function: Request ISO14443A-4 card and reset

Prototype: int WINAPI rf_typea_rst (unsigned short icdev,
 unsigned char model,
 unsigned char *pData,
 unsigned char *pMsgLg)

Parameter: icdev: [IN] Device ID
 model: [IN] request mode
 pData: [OUT] response data from card
 pMsgLg: [OUT] length of response data

Return 0 on success

Annotation: mode = 0x26: REQ_STD

 mode = 0x52: REQ_ALL

 pData: 4bytes CSN + RATS according to ISO14443A

5.3.4.2 INT WINAPI RF_COS_COMMAND

Prototype: int WINAPI rf_cos_command (unsigned short icdev,
 unsigned char *pCommand,
 unsigned char cmdLen,
 unsigned char *pData,
 unsigned char *pMsgLg)

Parameter: icdev: [IN] Device ID
 pCommand: [IN] COS command
 cmdLen: [IN] length of COS command
 pData: [OUT] response data from card, including SW1& SW2
 pMsgLg: [OUT] length of response data

Return 0 on success

5.3.4.3 INT WINAPI RF_CL_DESELECT

Prototype: int WINAPI rf_cl_deselect (unsigned short icdev)

Parameter: icdev: [IN] Device ID

Return 0 on success

5.3.5 SHC1102**5.3.5.1 INT WINAPI RF_REQUEST**

Function: ReqA

Prototype: int WINAPI rf_request (unsigned short icdev,
 unsigned char model,
 unsigned short *pTagType)

Parameter: icdev: [IN] Device ID
 model: [IN] REQ MODE
 pTagType: [OUT] response data from card, chip type code

Return 0 on success

Annotation: mode = 0x26: REQ_STD

mode = 0x52: REQ_ALL

5.3.5.2 INT WINAPI RF_SHC1102_AUTH

Function: SHC1102 card Authenticate

Prototype: int WINAPI rf_Shc1102_Auth (unsigned short icdev, unsigned char *pPassword)

Parameter: icdev: [IN] Device ID
pPassword: [IN] 4 bytes password

Return 0 on success

5.3.5.3 INT WINAPI RF_SHC1102_READ

Function: SHC1102 card read

Prototype: int WINAPI rf_Shc1102_Read (unsigned short icdev,
unsigned char block,
unsigned char *pData,
unsigned char *pLen)

Parameter: icdev: [IN] Device ID
block: [IN] SHC1102 card block address, 0x00 ~ 0x0F
pData: [OUT] response data from card
pLen: [OUT] length of response data

Return 0 on success

5.3.5.4 INT WINAPI RF_SHC1102_WRITE

Function: SHC1102 card write

Prototype: int WINAPI rf_Shc1102_Write (unsigned short icdev,
unsigned char block,
unsigned char *pData)

Parameter: icdev: [IN] Device ID
block: [IN] SHC1102 card block address, 0x00 ~ 0x0F
pData: [IN] written data, 16 bytes

Return 0 on success

pKey: [IN] 8 bytes pass word

Return 0 on success

5.4.2 AT88RF020

5.4.2.1 INT WINAPI RF_TYPEB_RST

Function: REQ ISO14443B protocol card and set SLOT

Prototype: int WINAPI rf_atqb(unsigned short icdev,
 unsigned char model,
 unsigned char *pData,
 unsigned char *pMsgLg)

Parameter: icdev: [IN] Device ID
 model: [IN] REQ MODE 0 = REQB, 1 = WUPB
 pData: [OUT] response data from card
 pMsgLg: [OUT] length of response data

Return 0 on success

5.4.2.2 INT WINAPI RF_AT020_CHECK

Function: AT88RF020 card Authenticate

Prototype: int WINAPI rf_at020_check (unsigned short icdev, unsigned char *pKey)

Parameter: icdev: [IN] Device ID
 pKey: [IN] 8 bytes pass word

Return 0 on success

5.4.2.3 INT WINAPI RF_AT020_COUNT

Function: AT88RF020 card count

Prototype: int WINAPI rf_at020_count(unsigned short icdev, unsigned char *pData)

Parameter: icdev: [IN] Device ID
 pData: [IN] signature, 6 bytes

Return 0 on success

5.4.2.4 INT WINAPI RF_AT020_READ

Function: AT88RF020 read

Prototype: int WINAPI rf_at020_read (unsigned short icdev,
 unsigned char page,
 unsigned char *pData,
 unsigned char *pMsgLen)

Parameter: icdev: [IN] Device ID
 page: [IN] page address, 0 ~ 31
 pData: [OUT] response data from card
 pMsgLen: [OUT] length of response data

Return 0 on success

5.4.2.5 INT WINAPI RF_AT020_WRITE

Function: AT88RF020 write

```

Prototype: int WINAPI rf_at020_write ( unsigned short icdev,
                                     unsigned char page,
                                     unsigned char *pData)

```

```

Parameter: icdev:      [IN]    Device ID
           page:       [IN]    page address, 0 ~ 31
           pData:     [IN]    written data, 8 bytes

```

Return 0 on success

5.4.2.6 INT WINAPI RF_AT020_LOCK

Function: AT88RF020 LOCK

```

Prototype: int WINAPI rf_at020_lock (unsigned short icdev, unsigned char *pData)

```

```

Parameter: icdev:      [IN]    Device ID
           pData:     [IN]    4 bytes data

```

Return 0 on success

5.4.2.7 INT WINAPI RF_AT020_DESELECT

Function: AT88RF020 card Deselect

```

Prototype: int WINAPI rf_at020_deselect (unsigned short icdev)

```

```

Parameter: icdev:      [IN]    Device ID

```

Return 0 on success

5.4.3 SR176SRIX4K**5.4.3.1 INT WINAPI RF_ST_SELECT**

Function: ST card (SR176/SRIX4K) Lock

```

Prototype: int WINAPI rf_st_select (unsigned short icdev, unsigned char *pChip_ID)

```

```

Parameter: icdev:      [IN]    Device ID
           pChip_ID:  [IN]    response data from card, 1 byte ID code

```

Return 0 on success

5.4.3.2 INT WINAPI INT_RF_SR176_READBLOCK

Function: SR176 Read

```

Prototype: int WINAPI int_rf_sr176_readblock ( unsigned short icdev,
                                               unsigned char block,
                                               unsigned char *pData,
                                               unsigned char *pLen)

```

```

Parameter: icdev:      [IN]    Device ID
           block:      [IN]    block address
           pData:     [OUT]   response data from card
           pLen:      [OUT]   length of response data

```

Return 0 on success

5.4.3.3 INT WINAPI INT_RF_SR176_WRITEBLOCK

Function: SR176 Write

Prototype: int WINAPI int rf_sr176_writeblock (unsigned short icdev,
 unsigned char block,
 unsigned char *pData)

Parameter: icdev: [IN] Device ID
 block: [IN] block address
 pData: [IN] written data, 2 bytes

Return 0 on success

5.4.3.4 INT WINAPI INT_RF_SR176_PROTECTBLOCK

Function: SR176 Lock

Prototype: int WINAPI int rf_sr176_protectblock (unsigned short icdev, unsigned char lockreg)

Parameter: icdev: [IN] Device ID
 lockreg: [IN] LOCKREG

Return 0 on success

Annotation: SR17 6has 16 blocks, every lockreg controls 2 blocks

lockreg	BLOCK	bit_setting	
b7	14 & 15	0:Write Enable	1:Block set as ROM
b6	12 & 13	0:Write Enable	1:Block set as ROM
b5	10 & 11	0:Write Enable	1:Block set as ROM
b4	8 & 9	0:Write Enable	1:Block set as ROM
b3	6 & 7	0:Write Enable	1:Block set as ROM
b2	4 & 5	0:Write Enable	1:Block set as ROM
b1	2 & 3	0:Write Enable	1:Block set as ROM
b0	0 & 1	0:Write Enable	1:Block set as ROM

5.4.3.5 INT WINAPI INT_RF_SRIX4K_GETUID

Function: SRIX4K Get UID

Prototype: int WINAPI int rf_srix4k_getuid (unsigned short icdev,
 unsigned char *pUid,
 unsigned char *pLen)

Parameter: icdev: [IN] Device ID
 pUid: [OUT] response data from card, UID
 pLen: [OUT] length of response data

Return 0 on success

5.4.3.6 INT WINAPI INT_RF_SRIX4K_READBLOCK

Function: SRIX4K Read

Prototype: int WINAPI int rf_srix4k_readblock (unsigned short icdev,
 unsigned char block,
 unsigned char *pData,
 unsigned char *pLen)

Parameter: icdev: [IN] Device ID
 block: [IN] block address
 pData: [OUT] response data from card
 pLen: [OUT] length of response data

Return 0 on success

5.4.3.7 INT WINAPI INT_RF_SRIX4K_WRITEBLOCK

Function: SRIX4K Write

Prototype: int WINAPI int rf_srix4k_writeblock(unsigned short icdev,
 unsigned char block,
 unsigned char *pData)

Parameter: icdev: [IN] Device ID
 block: [IN] block address
 pData: [IN] written data, 4bytes

Return 0 on success

5.4.3.8 INT WINAPI INT_RF_SRIX4K_PROTECTBLOCK

Function: SRIX4K Lock

Prototype: int WINAPI int rf_srix4k_protectblock(unsigned short icdev, unsigned char lockreg)

Parameter: icdev: [IN] Device ID
 Lockreg: [IN] LOCKREG

Return 0 on success

Annotation: 7~15 blocks of SRIX4K card can be written protect

lockreg	BLOCK	bit_setting	
b7	15	1:Write Enable	0:Block set as ROM
b6	14	1:Write Enable	0:Block set as ROM
b5	13	1:Write Enable	0:Block set as ROM
b4	12	1:Write Enable	0:Block set as ROM
b3	11	1:Write Enable	0:Block set as ROM
b2	10	1:Write Enable	0:Block set as ROM
b1	9	1:Write Enable	0:Block set as ROM
b0	7 & 8	1:Write Enable	0:Block set as ROM

5.4.3.9 INT WINAPI RF_ST_COMPLETION

Function: ST Desactivated

Prototype: int WINAPI rf_st_completion (unsigned short icdev)

Parameter: icdev: [IN] Device ID

Return 0 on success

5.4.4 TYPE_B SmartCard

5.4.4.1 INT WINAPI RF_TYPEB_RST

Function: Req ISO14443B-4 protocol Smart card and Reset

Prototype: int WINAPI rf_atqb (unsigned short icdev,
unsigned char model,
unsigned char *pData,
unsigned char *pMsgLg)

Parameter: icdev: [IN] Device ID
model: [IN] REQ MODE 0 = REQB, 1 = WUPB
pData: [OUT] response data from card
pMsgLg: [OUT] length of response data

Return 0 on success

5.4.4.2 INT WINAPI RF_COS_COMMAND

Prototype: int WINAPI rf_cos_command (unsigned short icdev,
unsigned char *pCommand,
unsigned char cmdLen,
unsigned char *pData,
unsigned char *pMsgLg)

Parameter: icdev: [IN] Device ID
pCommand: [IN] cos command
cmdLen: [IN] length of cos comman
pData: [OUT] response data from card, including SW1, SW2
pMsgLg: [OUT] length of response data

Return 0 on success

5.4.4.3 INT WINAPI RF_CL_DESELECT

Function: ISO14443B card Deselect

Prototype: int WINAPI rf_cl_deselect (unsigned short icdev)

Parameter: icdev: [IN] Device ID

Return 0 on success

5.5.4 INT WINAPI ISO15693_SELECT

Function: ISO15693_Select

Prototype: int WINAPI ISO15693_Select (unsigned short icdev, unsigned char *pUID)

Parameter: icdev: [IN] Device ID
pUID: [IN] 8 bytes UID

Return 0 on success

5.5.5 INT WINAPI ISO15693_RESET_TO_READY

Function: ISO15693_Reset_To_Ready

Prototype: int WINAPI ISO15693_Reset_To_Ready (unsigned short icdev,
unsigned char model,
unsigned char *pUID)Parameter: icdev: [IN] Device ID
model: [IN] bit0=Select_flag, bit1=Address_flag, bit2=Option_flag
pUID: [IN] 8 bytes UID

Return 0 on success

Annotation: If set Select_flag, only the cards on Selected state respond this command
If set Address_flag, only the cards that the UID are congruous will respond
this command
Clear Option_flag = 0**5.5.6 INT WINAPI ISO15693_STAY_QUIET**

Function: ISO15693_Stay_Quiet

Prototype: int WINAPI ISO15693_Stay_Quiet (unsigned short icdev, unsigned char *pUID)

Parameter: icdev: [IN] Device ID
pUID: [IN] 8 bytes UID

Return 0 on success

5.5.7 INT WINAPI ISO15693_GET_BLOCK_SECURITY

Function: ISO15693_Get_Block_Security

Prototype: int WINAPI ISO15693_Get_Block_Security (unsigned short icdev,
unsigned char model,
unsigned char *pUID,
unsigned char block,
unsigned char number,
unsigned char *pData,
unsigned char *pLen)Parameter: icdev: [IN] Device ID
model: [IN] bit0=Select_flag, bit1=Address_flag, bit2=Option_flag
pUID: [IN] 8 bytes UID
block: [IN] block address
number: [IN] the number of block to be read, < 0x40
pData: [OUT] response data from tag
pLen: [OUT] length of response data

Return 0 on success

Annotation: If set Select_flag, only the cards on Selected state respond this command
 If set Address_flag, only the cards that the UID are congruous will respond this command
 Clear Option_flag = 0

5.5.8 INT WINAPI ISO15693_READ

Function: ISO15693_Read

```
Prototype: int WINAPI ISO15693_Read ( unsigned short  icdev,
                                     unsigned char   model,
                                     unsigned char   *pUID,
                                     unsigned char   block,
                                     unsigned char   number,
                                     unsigned char   *pData,
                                     unsigned char   *pLen);
```

Parameter: icdev: [IN] Device ID
 model: [IN] bit0=Select_flag, bit1=Address_flag, bit2=Option_flag
 pUID: [IN] 8 bytes UID
 block: [IN] block address
 number: [IN] the number of block to be read, < 0x40
 pData: [OUT] response data from tag
 pLen: [OUT] length of response data

Return 0 on success

Annotation: If set Select_flag, only the cards on Selected state respond this command
 If set Address_flag, only the cards that the UID are congruous will respond this command
 Clear Option_flag = 0

5.5.9 INT WINAPI ISO15693_WRITE

Function: ISO15693_Write

```
Prototype: int WINAPI ISO15693_Write ( unsigned short  icdev,
                                       unsigned char   model,
                                       unsigned char   *pUID,
                                       unsigned char   block,
                                       unsigned char   *pData)
```

Parameter: icdev: [IN] Device ID
 model: [IN] bit0=Select_flag, bit1=Address_flag, bit2=Option_flag
 pUID: [IN] 8 bytes UID
 block: [IN] block address
 pData: [IN] written data, 4 bytes

Return 0 on success

Explanation: If set Select_flag, only the cards on Selected state respond this command
 If set Address_flag, only the cards that the UID are congruous will respond this command

If write TI card, set Option_flag,
If write I.CODE SLI card, clear Option_flag

5.5.10 INT WINAPI ISO15693_LOCK_BLOCK

Function: ISO15693_Lock_Block

Prototype: int WINAPI ISO15693_Lock_Block (unsigned short icdev,
unsigned char model,
unsigned char *pUID,
unsigned char block)

Parameter: icdev: [IN] Device ID
model: [IN] bit0=Select_flag, bit1=Address_flag, bit2=Option_flag
pUID: [IN] 8 bytes UID
block: [IN] block address

Return 0 on success

Annotation: If set Select_flag, only the cards on Selected state respond this command
If set Address_flag, only the cards that the UID are congruous will respond this command
If write TI card, set Option_flag,
If write I.CODE SLI card, clear Option_flag

5.5.11 INT WINAPI ISO15693_WRITE_AFI

Function: ISO15693_Write_AFI

Prototype: int WINAPI ISO15693_Write_AFI (unsigned short icdev,
unsigned char model,
unsigned char *pUID,
unsigned char AFI)

Parameter: icdev: [IN] Device ID
model: [IN] bit0=Select_flag, bit1=Address_flag, bit2=Option_flag
pUID: [IN] 8 bytes UID
AFI: [IN] AFI to be written

Return 0 on success

Annotation: If set Select_flag, only the cards on Selected state respond this command
If set Address_flag, only the cards that the UID are congruous will respond this command
If write TI card, set Option_flag,
If write I.CODE SLI card, clear Option_flag

5.5.12 INT WINAPI ISO15693_LOCK_AFI

Function: ISO15693_Lock_AFI

Prototype: int WINAPI ISO15693_Lock_AFI (unsigned short icdev,
unsigned char model,
unsigned char *pUID)

Parameter: icdev: [IN] Device ID
model: [IN] bit0=Select_flag, bit1=Address_flag, bit2=Option_flag

pUID: [IN] 8 bytes UID

Return 0 on success

Annotation: If set Select_flag, only the cards on Selected state respond this command
 If set Address_flag, only the cards that the UID are congruous will respond this command
 If write TI card, set Option_flag,
 If write I.CODE SLI card, clear Option_flag

5.5.13 INT WINAPI ISO15693_WRITE_DSFD

Function: ISO15693_Write_DSFD

Prototype: int WINAPI ISO15693_Write_DSFD (unsigned short icdev,
 unsigned char model,
 unsigned char *UID,
 unsigned char DSFD)

Parameter: icdev: [IN] Device ID
 model: [IN] bit0=Select_flag, bit1=Address_flag, bit2=Option_flag
 pUID: [IN] 8 bytes UID
 DSFD: [IN] DSFD to be written

Return 0 on success

Annotation: If set Select_flag, only the cards on Selected state respond this command
 If set Address_flag, only the cards that the UID are congruous will respond this command
 If write TI card, set Option_flag,
 If write I.CODE SLI card, clear Option_flag

5.5.14 INT WINAPI ISO15693_LOCK_DSFD

Function: ISO15693_Lock_DSFD

Prototype: int WINAPI ISO15693_Lock_DSFD (unsigned short icdev,
 unsigned char model,
 unsigned char *pUID)

Parameter: icdev: [IN] Device ID
 model: [IN] bit0=Select_flag, bit1=Address_flag, bit2=Option_flag
 pUID: [IN] 8 bytes UID

Return 0 on success

Annotation: If set Select_flag, only the cards on Selected state respond this command
 If set Address_flag, only the cards that the UID are congruous will respond this command
 If write TI card, set Option_flag,
 If write I.CODE SLI card, clear Option_flag

5.6 Function of Infineon Electric Tag

5.6.1 INT WINAPI SRF55VP_READ

Function: SRF55XXP Read a PAGE

Prototype: int WINAPI Srf55vp_Read (unsigned short icdev,
 unsigned char *pUID,
 unsigned char page,
 unsigned char *pData,
 unsigned char *pLen)

Parameter: icdev: [IN] Device ID
 pUID: [IN] 8 bytes UID
 page: [IN] address
 pData: [OUT] response data from tag
 pLen: [OUT] length of response data

Return 0 on success

5.6.2 INT WINAPI SRF55VP_WRITEBYTE

Function: SRF55XXP Write 1BYTE

Prototype: int WINAPI Srf55vp_WriteByte (unsigned short icdev,
 unsigned char *pUID,
 unsigned char page,
 unsigned char byteaddr,
 unsigned char data)

Parameter: icdev: [IN] Device ID
 pUID: [IN] 8 bytes UID
 page: [IN] address
 byteaddr: [IN] write the bytes to excursion address of the PAGE, 0 ~ 8
 data: [IN] written data

Return 0 on success

5.6.3 INT WINAPI SRF55VP_WRITE

Function: SRF55XXP Write a page

Prototype: int WINAPI Srf55vp_Write (unsigned short icdev,
 unsigned char *pUID,
 unsigned char page,
 unsigned char *pData)

Parameter: icdev: [IN] Device ID
 pUID: [IN] 8 bytes UID
 page: [IN] address
 pData: [IN] written data, 8 bytes

Return 0 on success

5.6.4 INT WINAPI SRF55VP_WRITE_REREAD

Function: SRF55XXP write PAGE and Return to the real data of this PAGE

Prototype: int WINAPI Srf55vp_Write_Reread(unsigned short icdev,
 unsigned char *pUID,
 unsigned char page,
 unsigned char *pWdata,
 unsigned char *pRdata,
 unsigned char *pLen)

Parameter: icdev: [IN] Device ID
 pUID: [IN] 8 bytes UID
 page: [IN] address
 pWdata: [IN] written data, 8bytes
 pRdata: [OUT] response data from tag
 pLen: [OUT] length of response data

Return 0 on success

5.7 PASS THROUGH FUNCTION

5.7.1 INT WIN API RF_TRANSCEIVE1

Function: Send parameters to Tag and receive response data

Prototype: int WINAPI rf_transceive1(unsigned short icdev,
 unsigned char *pTxData,
 unsigned char sendLen,
 unsigned char *pRxData,
 unsigned char *pMsgLg)

Parameter: icdev: [IN] Communication device identifier
 pTxData: [IN] parameter sent to tag, without CRC bytes
 CRC bytes is auto managed by reader
 sendLen: [IN] length of parameter
 pRxData: [OUT] response data from tag
 pMsgLg: [OUT] length of response data

Return 0 on success