



WINS H-TEC FIRE PROTECTION PANEL

(Calcium Silicate)



WINS H-TEC FIRE PROTECTION PANEL

CONTENTS

	Page(s)
Physical and Mechanical Properties	1
<u>Fire Resistant Enclosure Systems</u>	
<u>Board thickness: 9mm</u>	
1 Hour Integrity and Insulation	2 - 7
2 to 4 Hours Integrity and Insulation	8- 13
4 Hours Integrity	14-19
<u>Fire Resistant Partition Systems</u>	
<u>Board thickness: 9mm</u>	
2 Hours Integrity and Insulation	20
4 Hours Integrity	21-22
4 Hour Integrity and Insulation	23
<u>Board thickness: 12mm</u>	
4 Hours Integrity	24-25
4 Hours Integrity and Insulation	26
<u>Fire Resistant Ceiling Systems</u>	
<u>Board thickness: 9mm</u>	
1 Hour Integrity and Insulation	27-28
4 Hours Integrity and Insulation	29
4 Hours Integrity	30
<u>Board thickness: 12mm</u>	
4 Hours Integrity and Insulation	31
<u>Fire Resistant Smoke Barrier Systems</u>	
<u>Board thickness: 9mm</u>	
2 Hours Integrity	32-33
1-2 Hour Integrity and Insulation	34
4 Hour Integrity and Insulation	35



WINS H-TEC FIRE PROTECTION PANEL

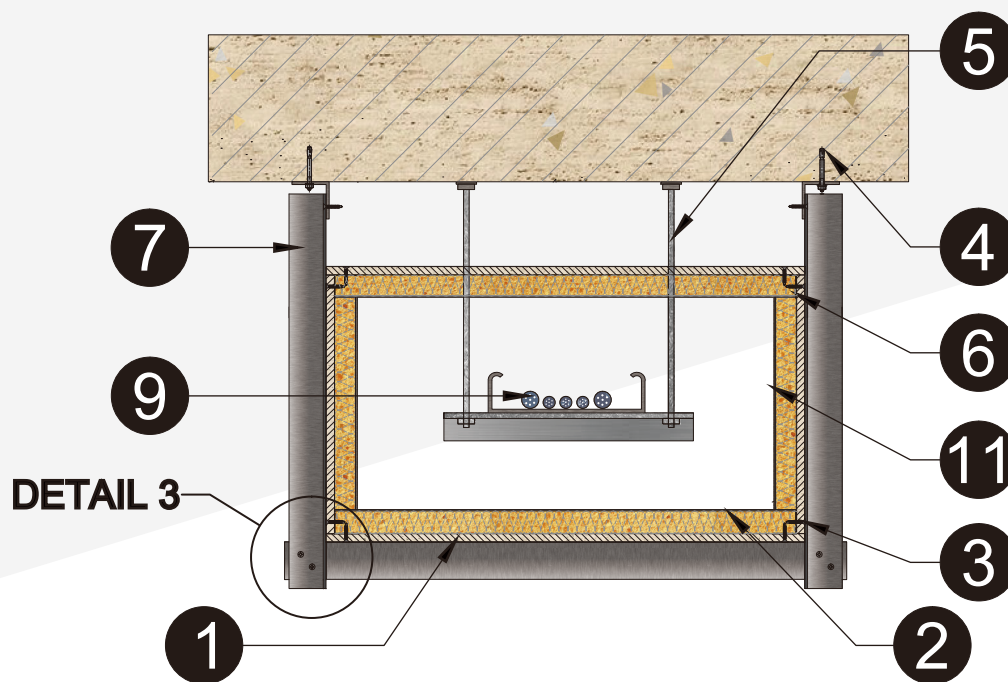
PHYSICAL AND MECHANICAL PROPERTIES

Test Description	Standard	Test Result
Increase in mass (water absorption) & thickness (swelling)	BS 5669 : Part 1:1989, Clause 19	Water absorption: 34.99%; Swelling: 0.08%
Density	BS EN 1170-6:1998	1.05g/cm ³
Resistance to impact	BS 5669 :Part 1:1989, Clause 21	Class A
Moisture content	BS EN 772:1993	12.35%
Dimension	BS 5669:Part1:1989, Clause 8	Average thickness: 8.87mm
Surface condition	By direct measurement	No visible damage
Flexural strength	BS 2782:Part 10: Method 1005:1997	13.98MPa
Tensile strength and elongation at break	BS 2782:Part 10: Method 1003:1977	Tensile strength: 6.98MPa
		Elongation at break: 0.14%
Dimensional changes associated with changes in relative humidity	BS EN 318:2002	Length change: generally within 0.02%
		Thickness change: generally within 0.12%
Microscopic examination of bulk materials	In-house methods G-T-023 & G-T-028	Non-asbestos
Sound transmission loss	BS 2750 Part 3:1995	55dB

WINS H-TEC FIRE PROTECTION PANEL

Four Sided E&M Services Enclosure System

**1 HOUR FIRE RATING, INTEGRITY AND INSULATION
IN ACCORDANCE WITH BS EN 1364-2:2018, BS EN 1363-1:2012
AND BS EN 1364-1:2015**



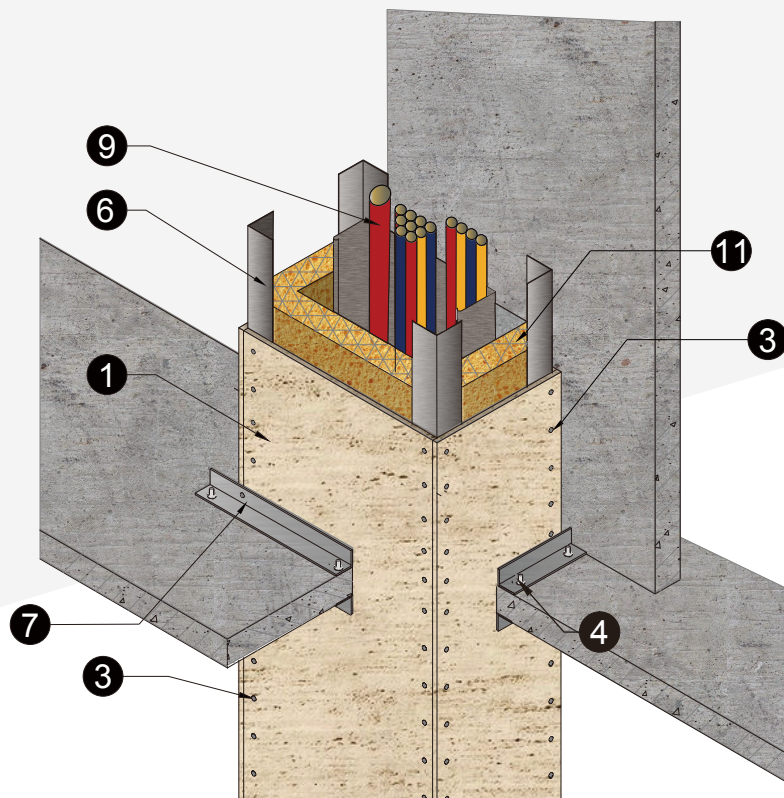
Technical Data:

- | | |
|--|--|
| <ul style="list-style-type: none"> 1 Wins H-Tec Fire Protection Panel, 9mm Thick 2 Steel Channel Collar Minimum 32 x50x0.5mm thick at nominal 1220mm centres. 3 M4 Self-tapping screw at nominal 200mm centres 4 M6 anchor bolt at nominal 500mm centres 5 Threaded rod hanger stress not exceed 10N/mm² 6 Steel angle minimum 25mmx25mmx0.6mm thick. | <ul style="list-style-type: none"> 7 Steel angle minimum 50mmx50mmx0.6mm thick. 8 Additional steel angle (50x50x0.6mm) of max spacing 1220mm for the width of enclosure 1500mm. 9 General E & M Services e.g. Cable Trunking & Steel Pipe etc. 10 Cantilever arm at Maximum 1250mm center (Not Applicable) 11 Rockwool: 1 layer of 50mm with nominal density of 100 kg/m³ |
|--|--|

WINS H-TEC FIRE PROTECTION PANEL

Three Sided E&M Services Enclosure System

**1 HOUR FIRE RATING, INTEGRITY AND INSULATION
IN ACCORDANCE WITH BS EN 1364-2:2018, BS EN 1363-1:2012
AND BS EN 1364-1:2015**



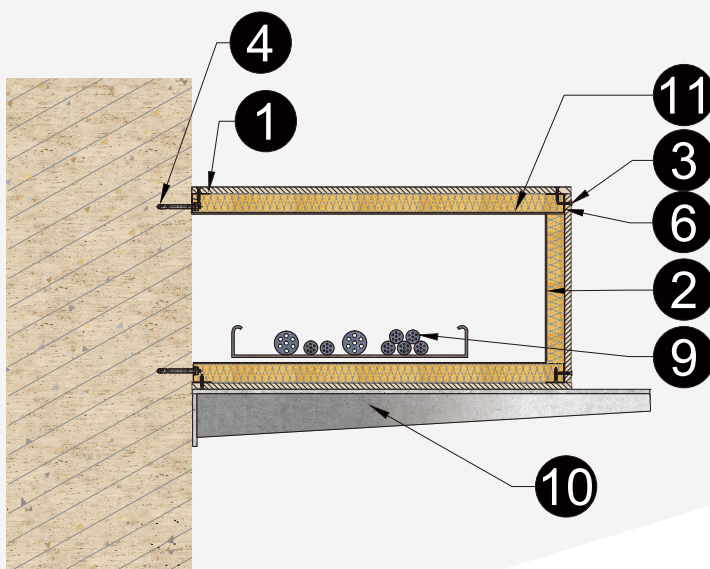
Technical Data :

- | | |
|--|--|
| <ul style="list-style-type: none"> 1 Wins H-Tec Fire Protection Panel, 9mm Thick 2 Steel Channel Collar Minimum 32 x50x0.5mm thick at nominal 1220mm centres. 3 M4 Self-tapping screw at nominal 200mm centres 4 M6 anchor bolt at nominal 500mm centres 5 Threaded rod hanger stress not exceed 10N/mm² 6 Steel angle minimum 25mmx25mmx0.6mm thick. | <ul style="list-style-type: none"> 7 Steel angle minimum 50mmx50mmx0.6mm thick. 8 Additional steel angle (50x50x0.6mm) of max spacing 1220mm for the width of enclosure 1500mm. 9 General E & M Services e.g. Cable Trunking & Steel Pipe etc. 10 Cantilever arm at Maximum 1250mm center (Not Applicable) 11 Rockwool: 1 layer of 50mm with nominal density of 100 kg/m³ |
|--|--|

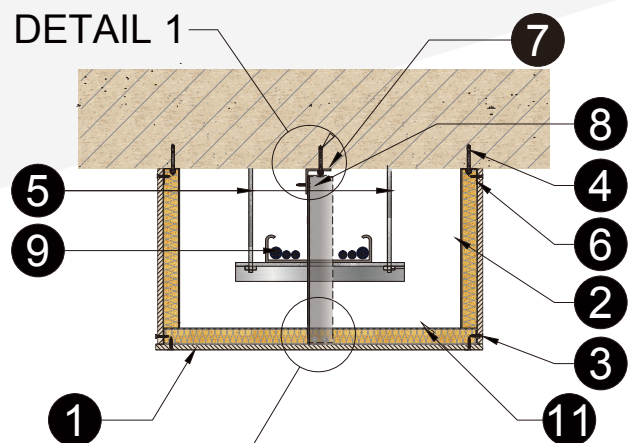
WINS H-TEC FIRE PROTECTION PANEL

Three Sided E&M Services Enclosure System

**1 HOUR FIRE RATING, INTEGRITY AND INSULATION
IN ACCORDANCE WITH BS EN 1364-2:2018, BS EN 1363-1:2012
AND BS EN 1364-1:2015**



THREE-SIDED CONSTRUCTION FROM SIDE WALL



DETAIL 2

THREE-SIDED CONSTRUCTION FROM FLOOR SOFFIT

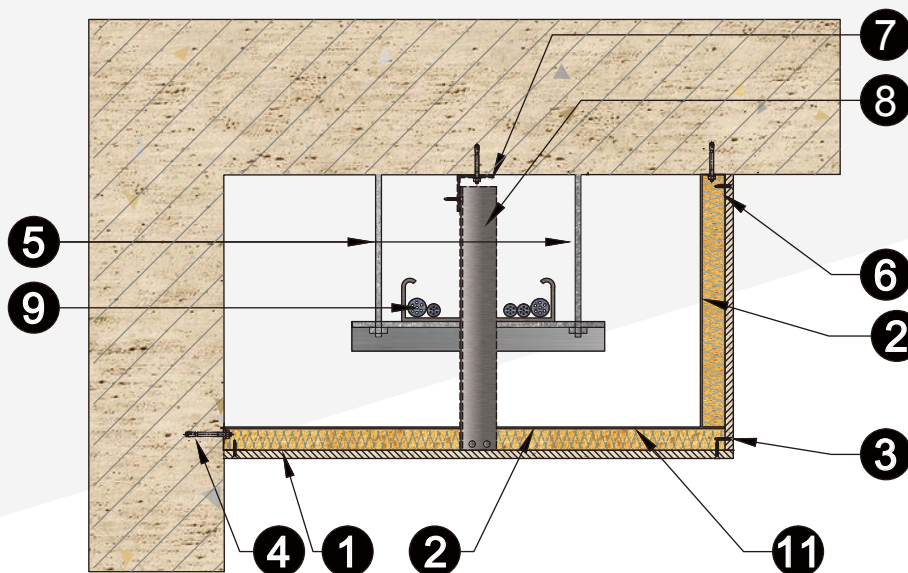
Technical Data:

- 1 Wins H-Tec Fire Protection Panel, 9mm Thick
- 2 Steel Channel Collar Minimum 32 x 50 x 0.5mm thick at nominal 1220mm centres
- 3 M4 self-tapping screw at nominal 200mm centres.
- 4 M6 anchor bolt at nominal 500mm centres.
- 5 Threaded rod hanger stress not exceed 10N/mm²
- 6 Steel angle minimum 25mm x 25mm x 0.6mm thick.
- 7 Steel angle minimum 50mm x 50mm x 0.6mm thick.
- 8 Additional steel angle (50 x 50 x 0.6mm) of max spacing 1220mm for the width of enclosure 1500mm.
- 9 General E & M Services e.g. Cable Trunking & Steel Pipe etc.
- 10 Cantilever arm at Maximum 1250m center
- 11 Rock Wool : 1 layer of 50mm with nominal density of 100 kg/m³

WINS H-TEC FIRE PROTECTION PANEL

Two Sided E&M Services Enclosure System

**1 HOUR FIRE RATING, INTEGRITY AND INSULATION
IN ACCORDANCE WITH BS EN 1364-2:2018, BS EN 1363-1:2012
AND BS EN 1364-1:2015**



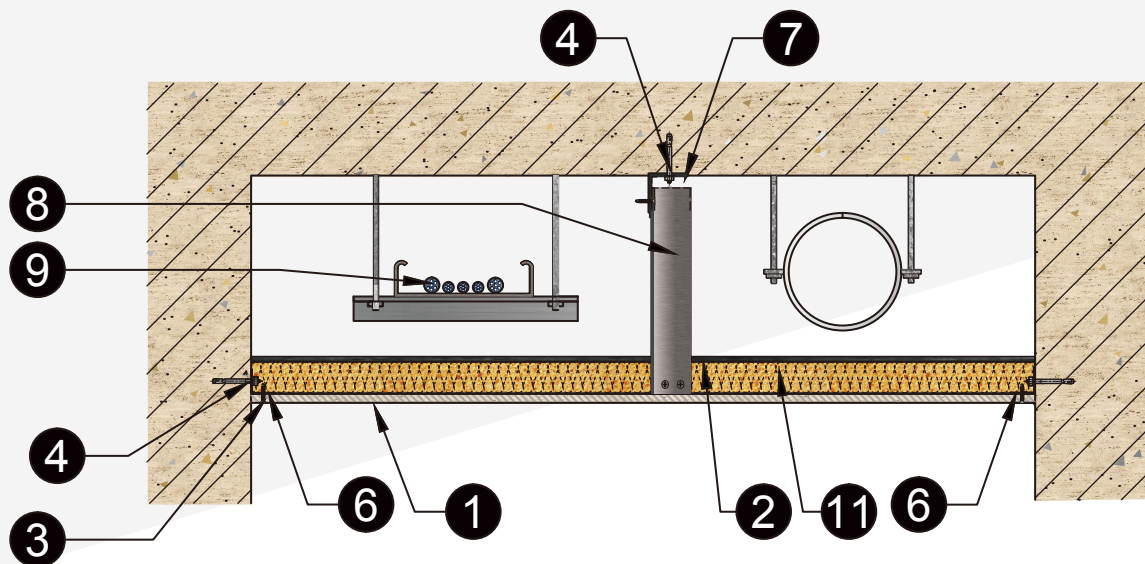
Technical Data:

- | | |
|---|--|
| <ul style="list-style-type: none"> 1 Wins H-Tec Fire Protection Panel, 9mm Thick 2 Steel Channel Collar Minimum 32 x 50 x 0.5mm thick at nominal 1220mm centres. 3 M4 self-tapping screw at nominal 200mm centres. 4 M6 anchor bolt at nominal 500mm centres. 5 Threaded rod hanger stress not exceed 10N/mm² 6 Steel angle minimum 25mm x 25mm x 0.6mm thick. | <ul style="list-style-type: none"> 7 Steel angle minimum 50mm x 50mm x 0.6mm thick. 8 Additional steel angle (50 x 50 x 0.6mm) of max spacing 1220mm for the width of enclosure 1500mm. 9 General E & M Services e.g. Cable Trunking & Steel Pipe etc. 10 Cantilever arm at Maximum 1250m centre (Not Applicable) 11 Rock Wool : 1 layer of 50mm with nominal density of |
|---|--|

WINS H-TEC FIRE PROTECTION PANEL

One Sided E&M Services Enclosure System

**1 HOUR FIRE RATING, INTEGRITY AND INSULATION
IN ACCORDANCE WITH BS EN 1364-2:2018, BS EN 1363-1:2012
AND BS EN 1364-1:2015**

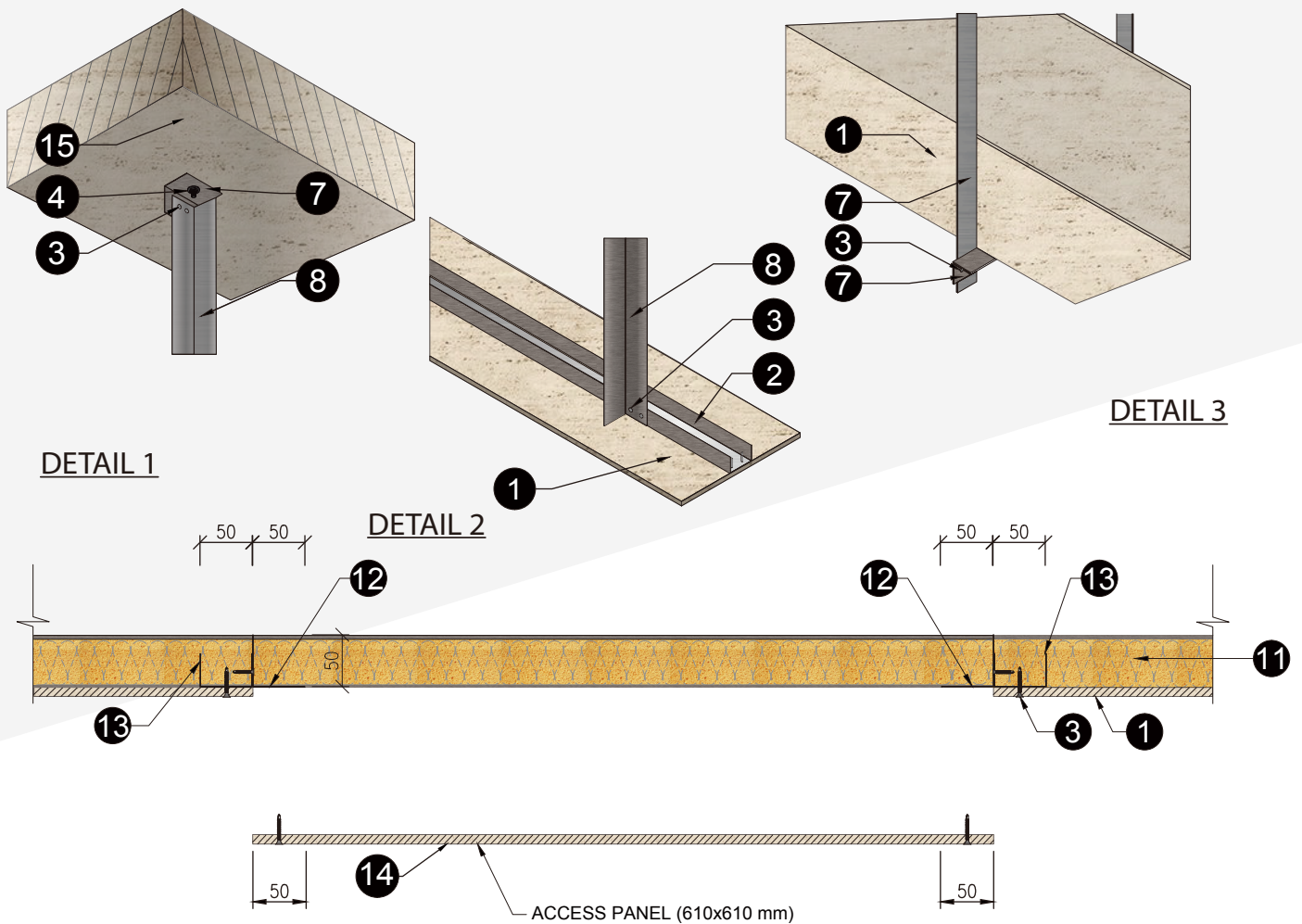


Technical Data:

- | | |
|---|---|
| <ul style="list-style-type: none"> 1 Wins H-Tec Fire Protection Panel, 9mm Thick 2 Steel Channel Collar Minimum 32 x 50 x 0.5mm thick at nominal 1220mm centres. 3 M4 self-tapping screw at nominal 200mm centres. 4 M6 anchor bolt at nominal 500mm centres. 5 Threaded rod hanger stress not exceed 10N/mm² 6 Steel angle minimum 25mm x 25mm x 0.6mm thick. | <ul style="list-style-type: none"> 7 Steel angle minimum 50mm x 50mm x 0.6mm thick. 8 Additional steel angle (50 x 50 x 0.6mm) of max spacing 1220mm for the width of enclosure 1500mm. 9 General E & M Services e.g. Cable Trunking & Steel Pipe etc. 10 Cantilever arm at Maximum 1250m centre (Not Applicable) 11 Rock Wool : 1 layer of 50mm with nominal density of |
|---|---|

WINS H-TEC FIRE PROTECTION PANEL

FIXING DETAIL AND ACCESS PANEL



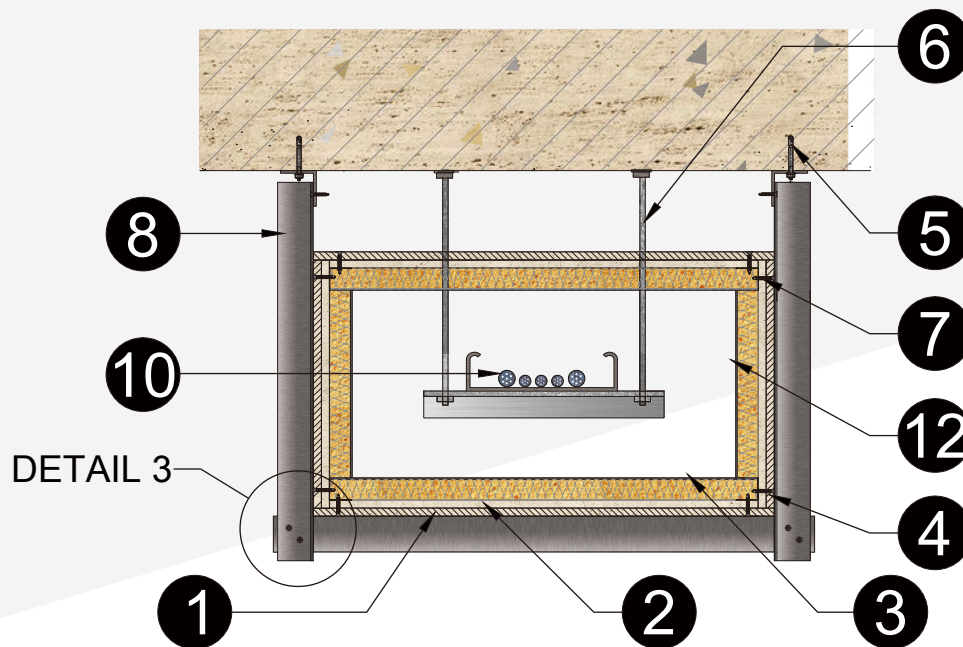
Technical Data:

- | | |
|--|--|
| <ul style="list-style-type: none"> 1 Wins H-Tec Fire Protection Panel, 9mm Thick 2 Steel Channel Collar Minimum 32 x50x0.5mm thick at nominal 1220mm centres. 3 M4 Self-tapping screw at nominal 200mm centres 4 M6 anchor bolt at nominal 500mm centres 5 Threaded rod hanger stress not exceed 10N/mm² 6 Steel angle minimum 25mmx25mmx0.6mm thick. 7 Steel angle minimum 50mmx50mmx0.6mm thick. 8 Additional steel angle (50x50x0.6mm) of max spacing 1220mm for the width of enclosure 1500mm. 9 General E & M Services e.g. Cable Trunking & Steel Pipe etc. | <ul style="list-style-type: none"> 10 Cantilever arm at Maximum 1250m center (Not Applicable) 11 Rockwool: 1 layer of 50mm with nominal density of 100 kg/m³ 12 Ceiling opening stiffener galvanised steel angle. 50x50x0.5mm THICK 13 Steel C-Channel 32x50x32x0.5mm THICK 14 Access Panel 15 Concrete floor |
|--|--|

WINS H-TEC FIRE PROTECTION PANEL

Four Sided E&M Services Enclosure System

2-4 HOUR FIRE RATING, INTEGRITY AND INSULATION
IN ACCORDANCE WITH BS EN 1364-2:1999, BS EN 1363-1:1999 AND
BS EN 1364-1:1999



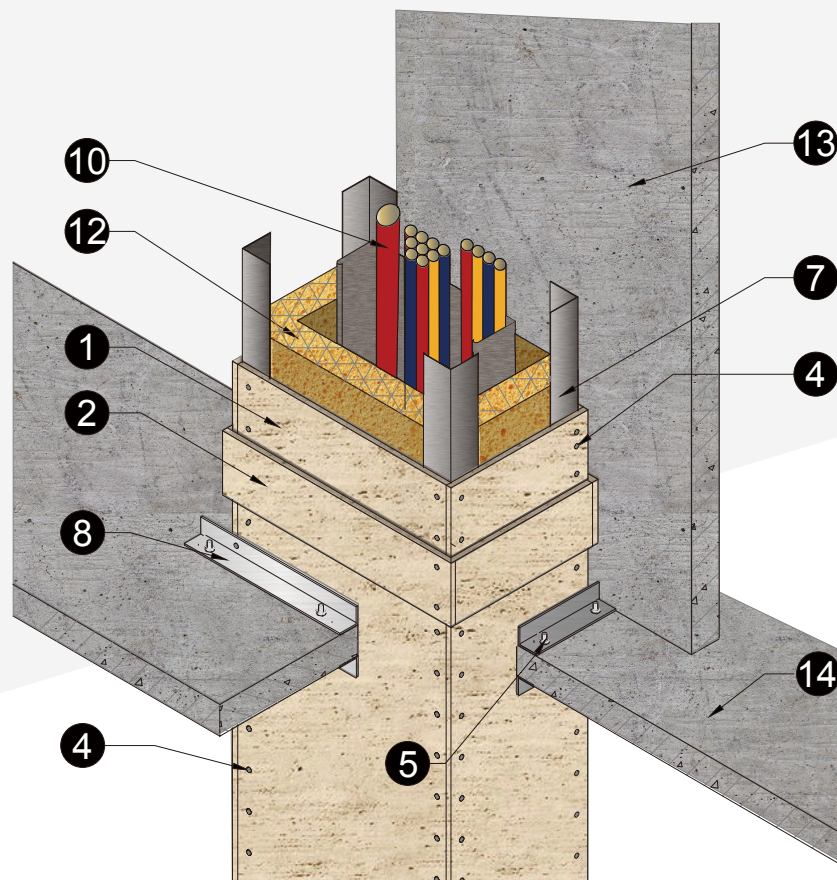
Technical Data:

- 1 WINS H-Tec fire protection panel, 9mm thick
- 2 Wins H-Tec Fire Protection Fillet 100mm width, 9mm thick (inside or outside)
- 3 Steel Channel Collar Minimum 32 x 50 x 0.5mm thick at nominal 1220mm centres
- 4 M4 self-tapping screw at nominal 200mm centres
- 5 M6 anchor bolt at nominal 500mm centres
- 6 Threaded Rod hanger stress not exceed 10N/mm²
- 7 Steel angle minimum 25x25x0.6mm thick
- 8 Steel angle minimum 50mm x 50mm x 0.6mm thick.
- 9 Additional steel angle (50x50x0.6mm) of max spacing 1220mm for the width of enclosure 1500mm
- 10 General E & M Services e.g. Cable Trunking & Steel Pipe etc..
- 11 Cantilever arm at Maximum 1250m center (Not Applicable)
- 12 Rock Wool :
1 layer of 50mm with nominal density of 110 kg/m³ for 2 hours insulation / 2 layers of 50mm with nominal density of 80kg/m³ for 4 hours insulation.

WINS H-TEC FIRE PROTECTION PANEL

Three Sided E&M Services Enclosure System

2-4 HOUR FIRE RATING, INTEGRITY AND INSULATION
IN ACCORDANCE WITH BS EN 1364-2:1999, BS EN 1363-1:1999 AND
BS EN 1364-1:1999



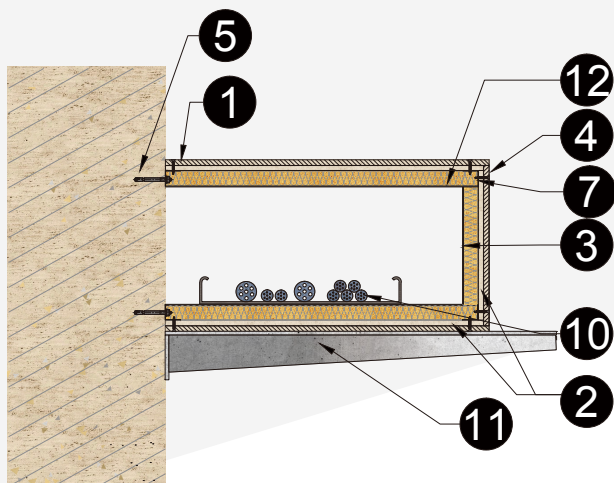
Technical Data :

- | | |
|---|---|
| <ul style="list-style-type: none"> 1 WINS H-Tec fire protection panel, 9mm thick 2 Wins H-Tec Fire Protection Fillet 100mm width, 9mm thick (inside or outside) 3 Steel Channel Collar Minimum 32 x 50 x 0.5mm thick at nominal 1220mm centres 4 M4 self-tapping screw at nominal 200mm centres 5 M6 anchor bolt at nominal 500mm centres 6 Threaded Rod hanger stress not exceed 10N/mm² 7 Steel angle minimum 25x25x0.6mm thick 8 Steel angle minimum 50mm x 50mm x 0.6mm thick. | <ul style="list-style-type: none"> 9 Additional steel angle (50x50x0.6mm) of max spacing 1220mm for the width of enclosure 1500mm 10 General E & M Services e.g. Cable Trunking & Steel Pipe etc.. 11 Cantilever arm at Maximum 1250m center (Not Applicable) 12 Rock Wool :
1 layer of 50mm with nominal density of 110 kg/m³ for 2 hours insulation / 2 layers of 50mm with nominal density of 80kg/m³ for 4 hours insulation. 13 Construction Wall 14 Concrete floor |
|---|---|

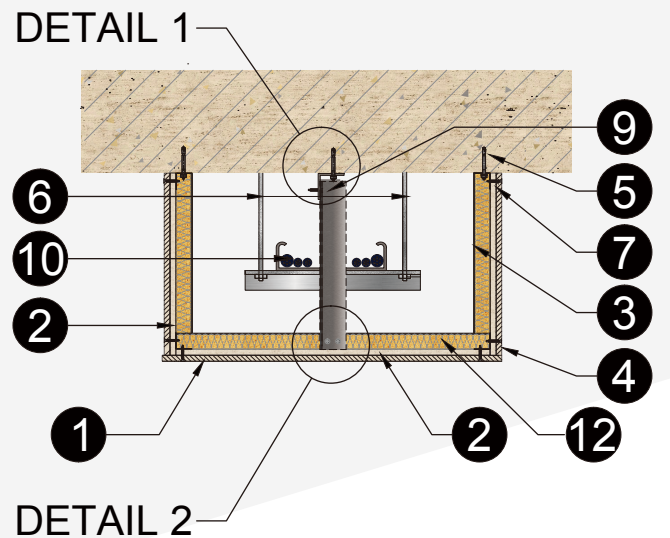
WINS H-TEC FIRE PROTECTION PANEL

Three Sided E&M Services Enclosure System

**2-4 HOUR FIRE RATING, INTEGRITY AND INSULATION
IN ACCORDANCE WITH BS EN 1364-2:1999, BS EN 1363-1:1999 AND
BS EN 1364-1:1999**



THREE-SIDED CONSTRUCTION FROM SIDE WALL



THREE-SIDED CONSTRUCTION FROM FLOOR SOFFIT

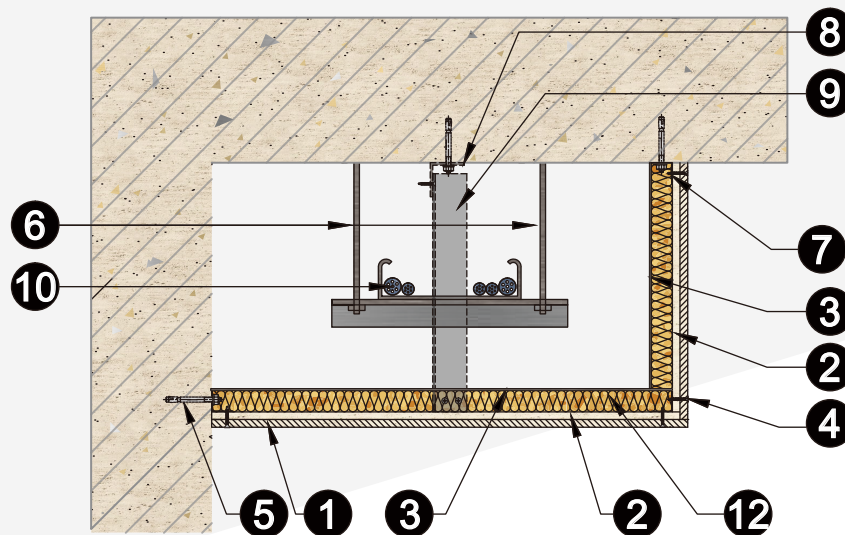
Technical Data:

- 1 WINS H-Tec fire protection panel, 9mm thick
- 2 Wins H-Tec Fire Protection Fillet 100mm width, 9mm thick (inside or outside)
- 3 Steel Channel Collar Minimum 32 x 50 x 0.5mm thick at nominal 1220mm centres
- 4 M4 self-tapping screw at nominal 200mm centres
- 5 M6 anchor bolt at nominal 500mm centres
- 6 Threaded Rod hanger stress not exceed 10N/mm²
- 7 Steel angle minimum 25x25x0.6mm thick
- 8 Steel angle minimum 50mm x 50mm x 0.6mm thick.
- 9 Additional steel angle (50x50x0.6mm) of max spacing 1220mm for the width of enclosure 1500mm
- 10 General E & M Services e.g. Cable Trunking & Steel Pipe etc..
- 11 Cantilever arm at Maximum 1250m center
- 12 Rock Wool :
1 layer of 50mm with nominal density of 110 kg/m³ for 2 hours insulation / 2 layers of 50mm with nominal density of 80kg/m³ for 4 hours insulation.

WINS H-TEC FIRE PROTECTION PANEL

Two Sided E&M Services Enclosure System

**2-4 HOUR FIRE RATING, INTEGRITY AND INSULATION
IN ACCORDANCE WITH BS EN 1364-2:1999, BS EN 1363-1:1999 AND
BS EN 1364-1:1999**



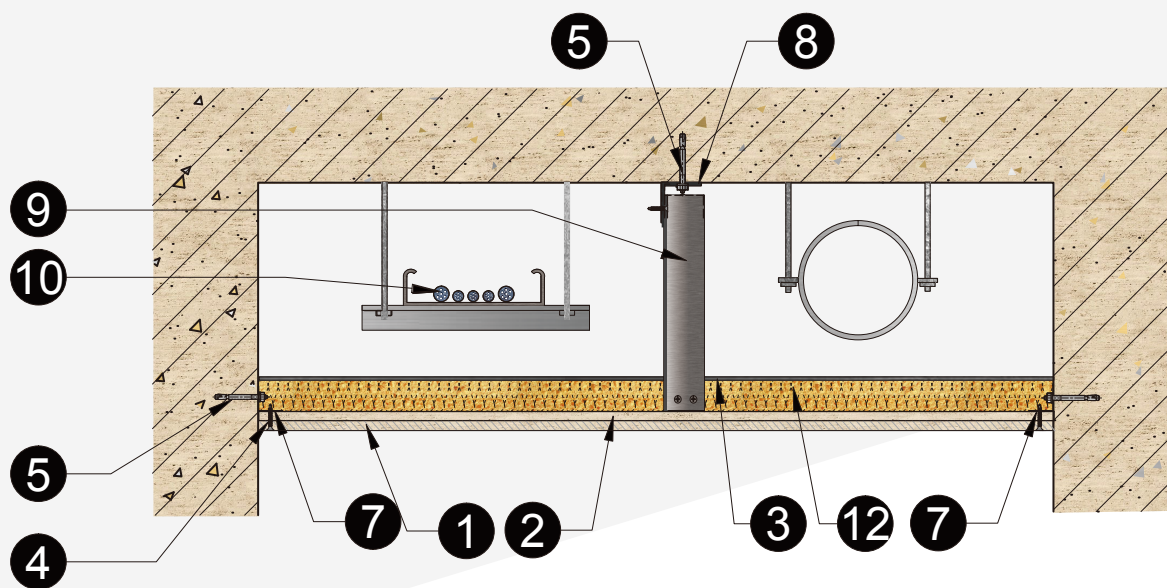
Technical Data :

- | | |
|---|--|
| <ul style="list-style-type: none"> 1 WINS H-Tec fire protection panel, 9mm thick 2 Wins H-Tec Fire Protection Fillet 100mm width, 9mm thick (inside or outside) 3 Steel Channel Collar Minimum 32 x 50 x 0.5mm thick at nominal 1220mm centres 4 M4 self-tapping screw at nominal 200mm centres 5 M6 anchor bolt at nominal 500mm centres 6 Threaded Rod hanger stress not exceed 10N/mm² 7 Steel angle minimum 25x25x0.6mm thick 8 Steel angle minimum 50mm x 50mm x 0.6mm thick. | <ul style="list-style-type: none"> 9 Additional steel angle (50x50x0.6mm) of max spacing 1220mm for the width of enclosure 1500mm 10 General E & M Services e.g. Cable Trunking & Steel Pipe etc.. 11 Cantilever arm at Maximum 1250m center (Not Applicable) 12 Rock Wool :
1 layer of 50mm with nominal density of 110 kg/m³ for 2 hours insulation / 2 layers of 50mm with nominal density of 80kg/m³ for 4 hours insulation. |
|---|--|

WINS H-TEC FIRE PROTECTION PANEL

One Sided E&M Services Enclosure System

**2-4 HOUR FIRE RATING, INTEGRITY AND INSULATION
IN ACCORDANCE WITH BS EN 1364-2:1999, BS EN 1363-1:1999 AND
BS EN 1364-1:1999**

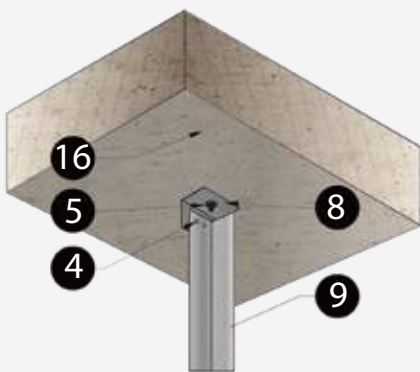


Technical Data :

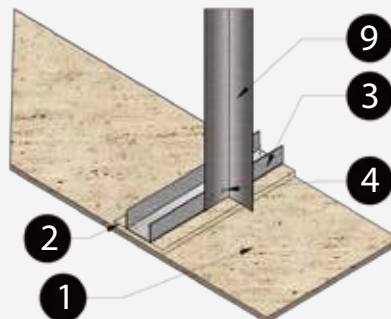
- 1 WINS H-Tec fire protection panel, 9mm thick
- 2 Wins H-Tec Fire Protection Fillet 100mm width, 9mm thick (inside or outside)
- 3 Steel Channel Collar Minimum 32 x 50 x 0.5mm thick at nominal 1220mm centres
- 4 M4 self-tapping screw at nominal 200mm centres
- 5 M6 anchor bolt at nominal 500mm centres
- 6 Threaded Rod hanger stress not exceed 10N/mm²
- 7 Steel angle minimum 25x25x0.6mm thick
- 8 Steel angle minimum 50mm x 50mm x 0.6mm thick.
- 9 Additional steel angle (50x50x0.6mm) of max spacing 1220mm for the width of enclosure 1500mm
- 10 General E & M Services e.g. Cable Trunking & Steel Pipe etc..
- 11 Cantilever arm at Maximum 1250m center (Not Applicable)
- 12 Rock Wool :
1 layer of 50mm with nominal density of 110 kg/m³ for 2 hours insulation / 2 layers of 50mm with nominal density of 80kg/m³ for 4 hours insulation.

WINS H-TEC FIRE PROTECTION PANEL

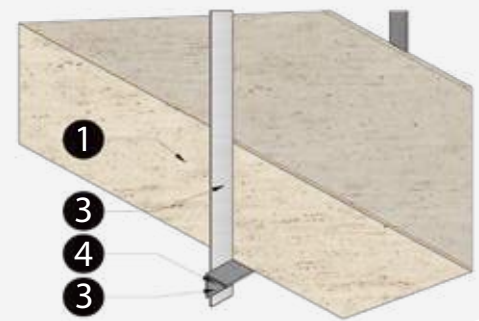
FIXING DETAIL AND ACCESS PANEL



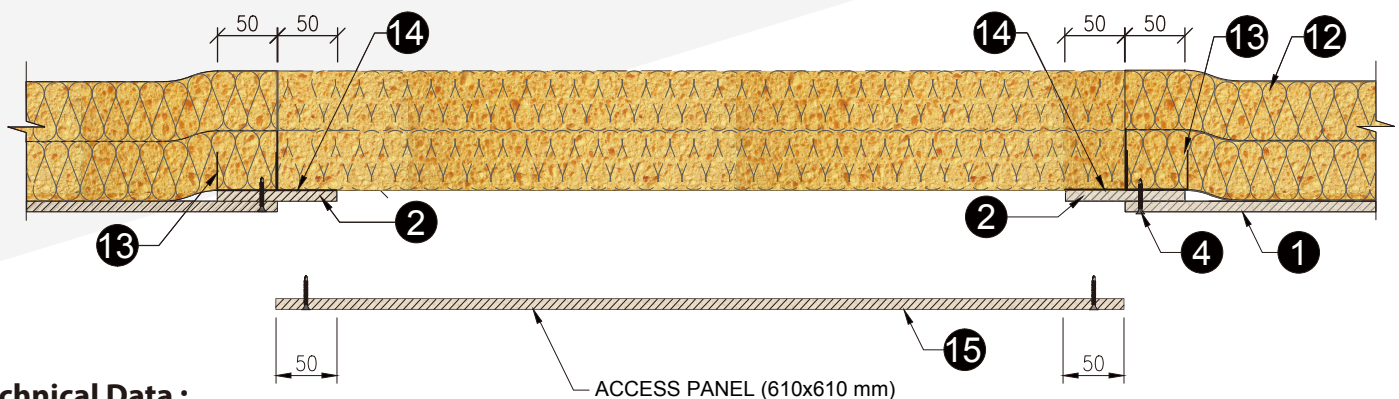
DETAIL 1



DETAIL 2



DETAIL 3



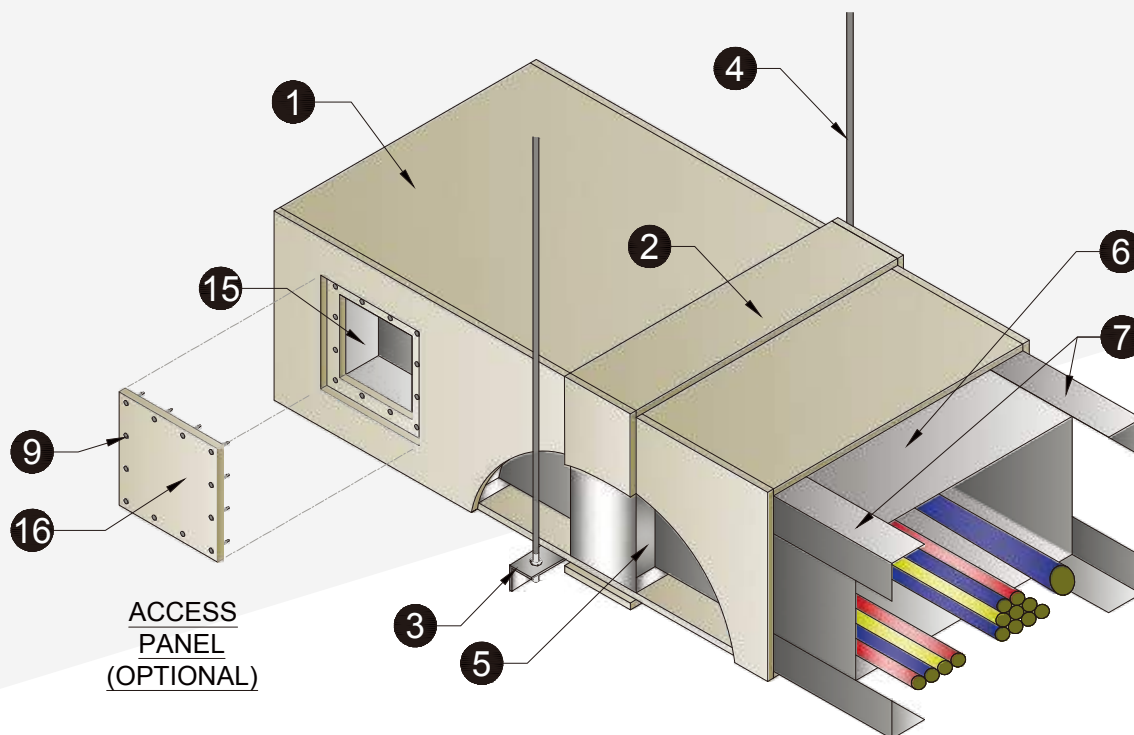
Technical Data :

- 1 WINS H-Tec fire protection panel, 9mm thick
- 2 Wins H-Tec Fire Protection Fillet 100mm width, 9mm thick (inside or outside)
- 3 Steel Channel Collar Minimum 32 x 50 x 0.5mm thick at nominal 1220mm centres
- 4 M4 self-tapping screw at nominal 200mm centres
- 5 M6 anchor bolt at nominal 500mm centres
- 6 Threaded Rod hanger stress not exceed 10N/mm²
- 7 Steel angle minimum 25x25x0.6mm thick
- 8 Steel angle minimum 50mm x 50mm x 0.6mm thick.
- 9 Additional steel angle (50x50x0.6mm) of max spacing 1220mm for the width of enclosure 1500mm
- 10 General E & M Services e.g. Cable Trunking & Steel Pipe etc..
- 11 Cantilever arm at Maximum 1250m center (Not Applicable)
- 12 Rock Wool : 1 layer of 50mm with nominal density of 110 kg/m³ for 2 hours insulation / 2 layers of 50mm with nominal density of 80kg/m³ for 4 hours insulation.
- 13 Steel C-Channel 32x50x32x0.5mm thick
- 14 Ceiling opening , stiffener galvanised steel angle 50x50x0.5 mm thick
- 15 Wins Access Panel, 9mm thick
- 16 Concrete floor

WINS H-TEC FIRE PROTECTION PANEL

Four Sided E&M Services Horizontal Enclosure System

4 HOURS FIRE RATING, INTEGRITY IN ACCORDANCE WITH
BS EN 1364-2:1999, BS EN 1364-1:2015



Technical Data :

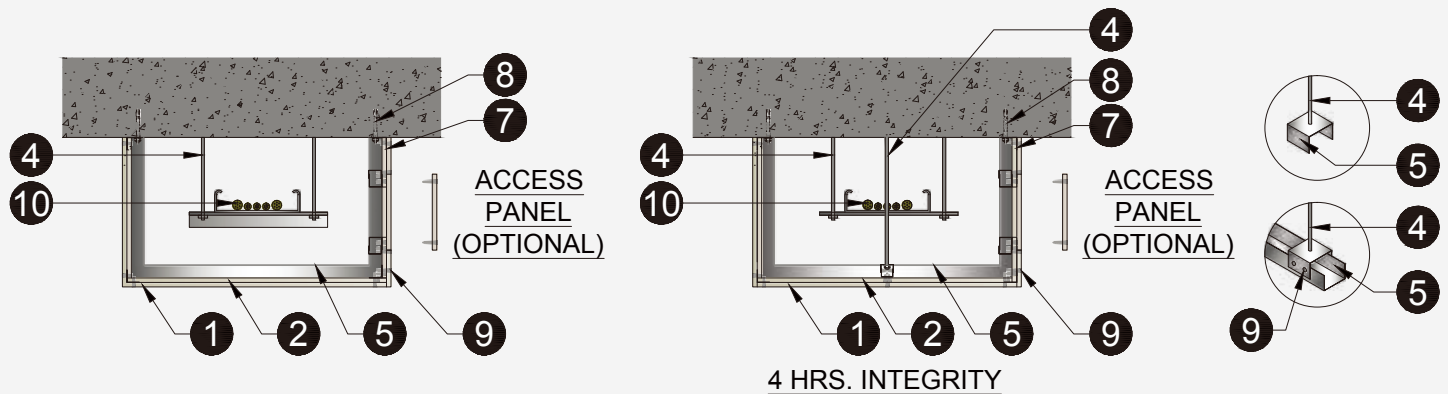
- | | |
|--|---|
| <p>1 WINS H-Tec fire protection panel, 9mm thick</p> <p>2 WINS H-Tec fire protection fillet, 100mm width, 9mm thick (inside or outside) positioned all board joints, except the corner longitudinal joints</p> <p>3 Enclosure support, steel C-channel or L-angles</p> <p>4 Steel hanger rod at nominal 1000mm centres sizes according to limiting stress</p> <p>5 Steel channel collar, 32x50x0.5mm thick at butt joints at nominal 1220mm centers</p> <p>6 Steel cable tray</p> <p>7 Steel angle minimum 25x25x0.6mm thick</p> <p>8 M6 all steel expanding fixing at 500mm nominal centers</p> | <p>9 M4 Self-tapping screw at nominal 200mm centers</p> <p>10 General E&M services. e.g. cable trunking and steel pipe etc.</p> <p>11 Cantilever arm at maximum 1250mm centers</p> <p>12 Steel angle minimum 50x50x0.9mm thick fasten the service duct to the wall at nominal 1200mm centers</p> <p>13 Construction wall</p> <p>14 Concrete floor</p> <p>15 C-channel 50x50x50x0.6mm thick</p> <p>16 Access panel not exceeding 610mmx610mm</p> |
|--|---|

WINS H-TEC FIRE PROTECTION PANEL

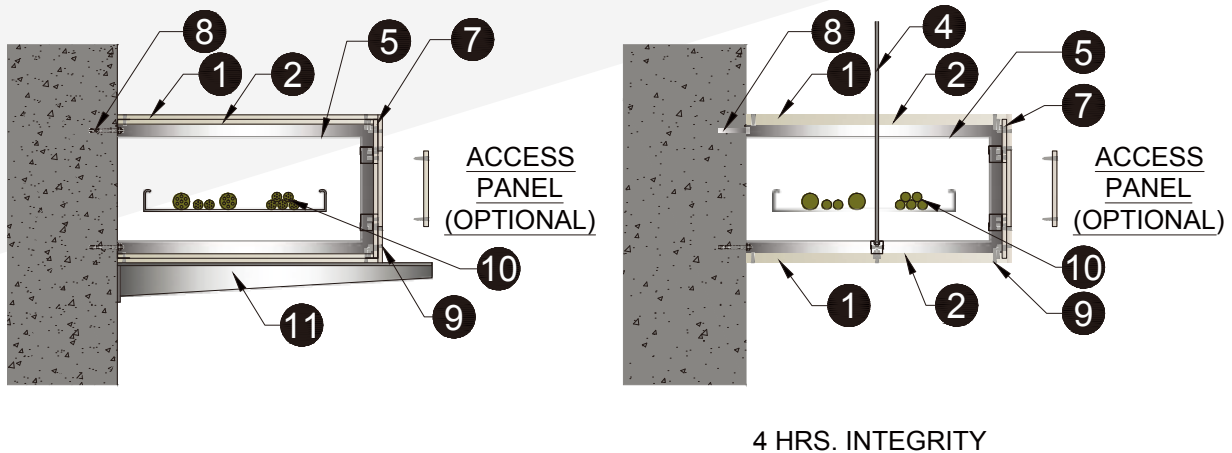
Three Sided E&M Services Enclosure System

4 HOURS FIRE RATING, INTEGRITY IN ACCORDANCE WITH
BS EN 1364-2:1999, BS EN 1364-1:2015

THREE-SIDED CONSTRUCTION FROM FLOOR SOFFIT



THREE-SIDED CONSTRUCTION FROM SIDE WALL



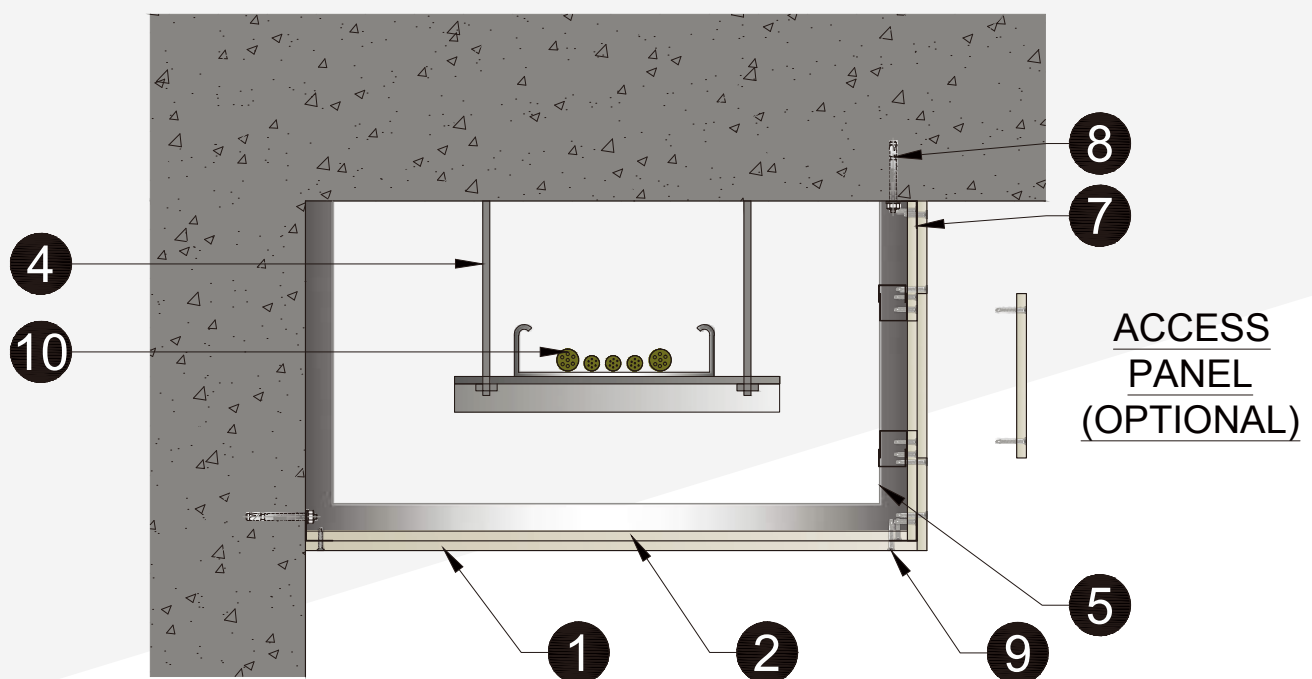
Technical Data:

- | | |
|--|--|
| <ul style="list-style-type: none"> 1 WINS H-Tec fire protection panel, 9mm thick 2 WINS H-Tec fire protection fillet, 100mm width, 9mm thick (inside or outside) positioned all board joints, except the corner longitudinal joints 3 Enclosure support, steel C-channel or L-angles 4 Steel hanger rod at nominal 1000mm centres sizes according to limiting stress 5 Steel channel collar, 32x50x0.5mm thick at butt joints at nominal 1220mm centers | <ul style="list-style-type: none"> 6 Steel cable tray 7 Steel angle minimum 25x25x0.6mm thick 8 M6 all steel expanding fixing at 500mm nominal centers 9 M4 Self-tapping screw at nominal 200mm centers 10 General E&M services. e.g. cable trunking and steel pipe etc. 11 Cantilever arm at maximum 1250mm centers |
|--|--|

WINS H-TEC FIRE PROTECTION PANEL

Two Sided E&M Services Enclosure System

4 HOURS FIRE RATING, INTEGRITY IN ACCORDANCE WITH
BS EN 1364-2:1999, BS EN 1364-1:2015



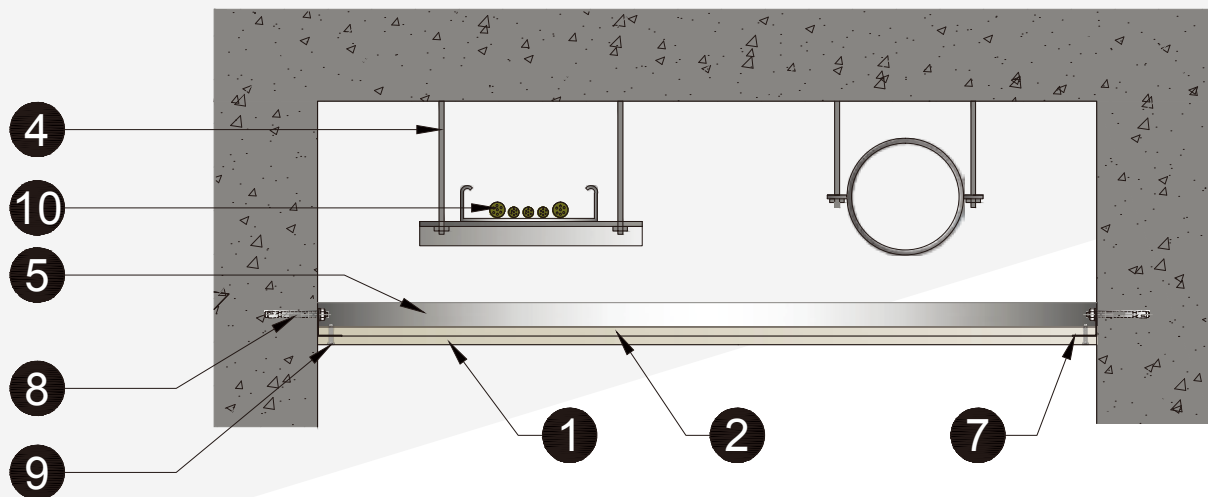
Technical Data:

- | | |
|--|---|
| <ul style="list-style-type: none"> 1 WINS H-Tec fire protection panel, 9mm thick 2 WINS H-Tec fire protection fillet, 100mm width, 9mm thick (inside or outside) positioned all board joints, except the corner longitudinal joints 3 Enclosure support, steel C-channel or L-angles 4 Steel hanger rod at nominal 1000mm centres sizes according to limiting stress 5 Steel channel collar, 32x50x0.5mm thick at butt joints at Fig nominal 1220mm centers | <ul style="list-style-type: none"> 6 Steel cable tray 7 Steel angle minimum 25x25x0.6mm thick 8 M6 all steel expanding fixing at 500mm nominal centers 9 M4 Self-tapping screw at nominal 200mm centers 10 General E&M services. e.g. cable trunking and steel pipe etc. |
|--|---|

WINS H-TEC FIRE PROTECTION PANEL

One Sided E&M Services Enclosure System

4 HOURS FIRE RATING, INTEGRITY IN ACCORDANCE WITH
BS EN 1364-2:1999, BS EN 1364-1:2015



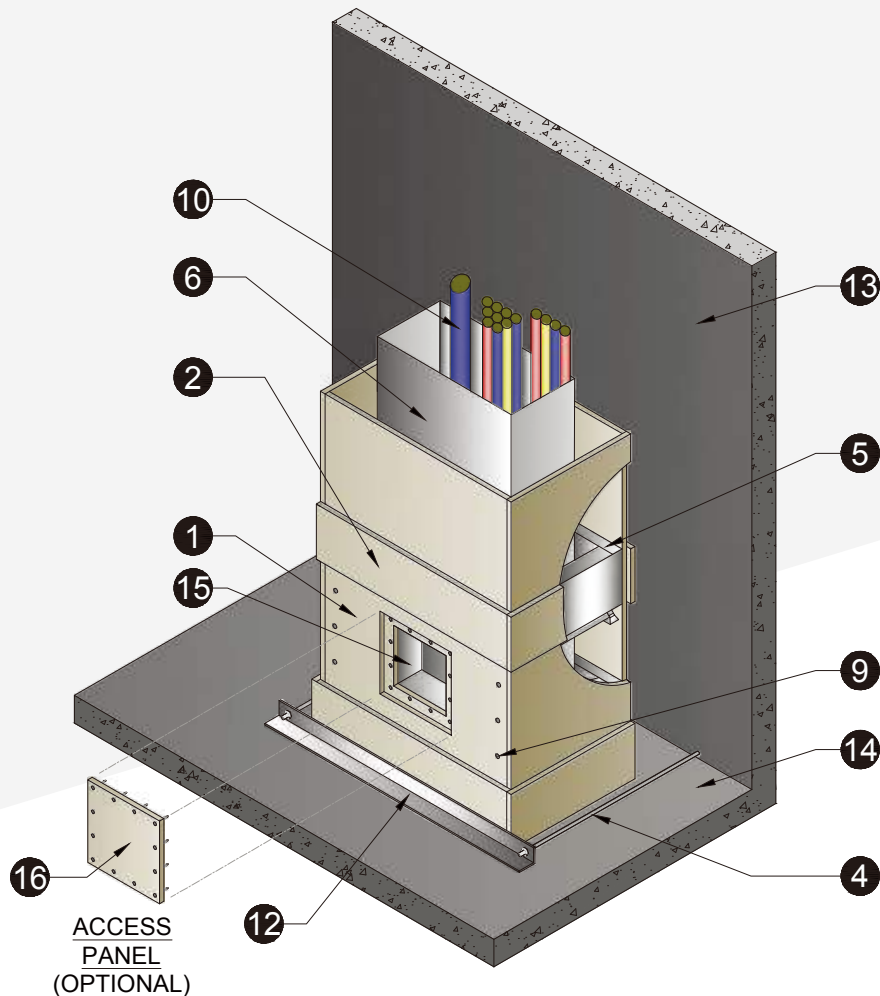
Technical Data:

- | | |
|--|---|
| <ul style="list-style-type: none"> 1 WINS H-Tec fire protection panel, 9mm thick 2 WINS H-Tec fire protection fillet, 100mm width, 9mm thick (inside or outside) positioned all board joints, except the corner longitudinal joints 3 Enclosure support, steel C-channel or L-angles 4 Steel hanger rod at nominal 1000mm centres sizes according to limiting stress 5 Steel channel collar, 32x50x0.5mm thick at butt joints at Fig nominal 1220mm centers | <ul style="list-style-type: none"> 6 Steel cable tray 7 Steel angle minimum 25x25x0.6mm thick 8 M6 all steel expanding fixing at 500mm nominal centers 9 M4 Self-tapping screw at nominal 200mm centers 10 General E&M services. e.g. cable trunking and steel pipe etc. |
|--|---|

WINS H-TEC FIRE PROTECTION PANEL

Four Sided E&M Services Vertical Enclosure System

4 HOURS FIRE RATING, INTEGRITY IN ACCORDANCE WITH
BS EN 1364-2:1999, BS EN 1364-1:2015



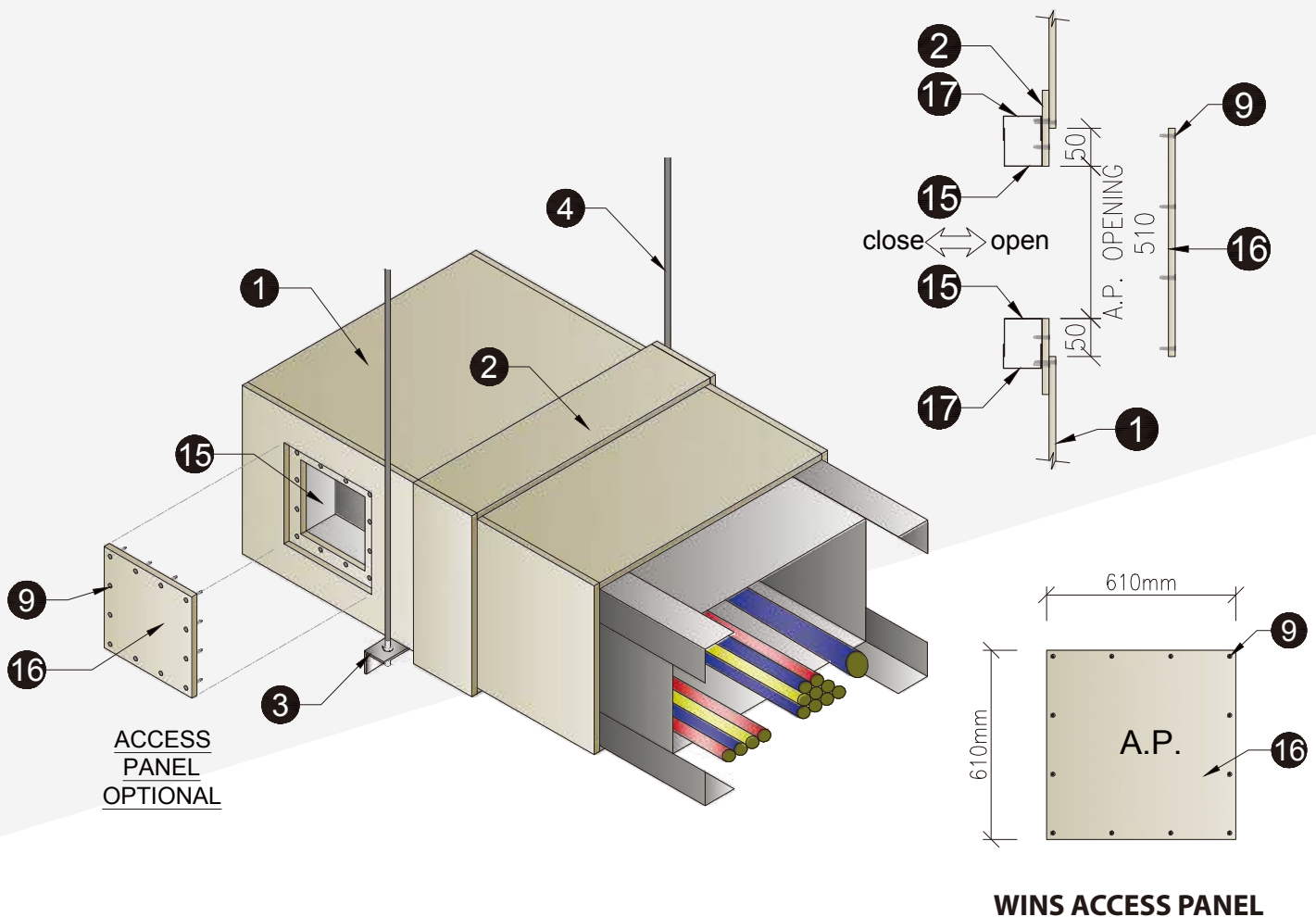
Technical Data:

- | | |
|---|---|
| <ul style="list-style-type: none"> 1 WINS H-Tec fire protection panel, 9mm thick 2 WINS H-Tec fire protection fillet, 100mm width, 9mm thick (inside or outside) positioned all board joints, except the corner longitudinal joints 3 Enclosure support, steel C-channel or L-angles 4 Steel hanger rod at nominal 1000mm centres sizes according to limiting stress 5 Steel channel collar, 32x50x0.5mm thick at butt joints at nominal 1220mm centers 6 Steel cable tray 7 Steel angle minimum 25x25x0.6mm thick 8 M6 all steel expanding fixing at 500mm nominal centers | <ul style="list-style-type: none"> 9 M4 Self-tapping screw at nominal 200mm centers 10 General E&M services. e.g. cable trunking and steel pipe etc. 11 Cantilever arm at maximum 1250mm centers 12 Steel angle minimum 50x50x0.9mm thick fasten the serviceduct to the wall at nominal 1200mm centers 13 Construction wall 14 Concrete floor 15 C-channel 50x50x50x0.6mm thick 16 Access panel not exceeding 610mmx610mm |
|---|---|

WINS H-TEC FIRE PROTECTION PANEL

Access Panel Detail

**4 HOURS FIRE RATING, INTEGRITY IN ACCORDANCE WITH
BS EN 1364-2:1999, BS EN 1364-1:2015**



WINS ACCESS PANEL

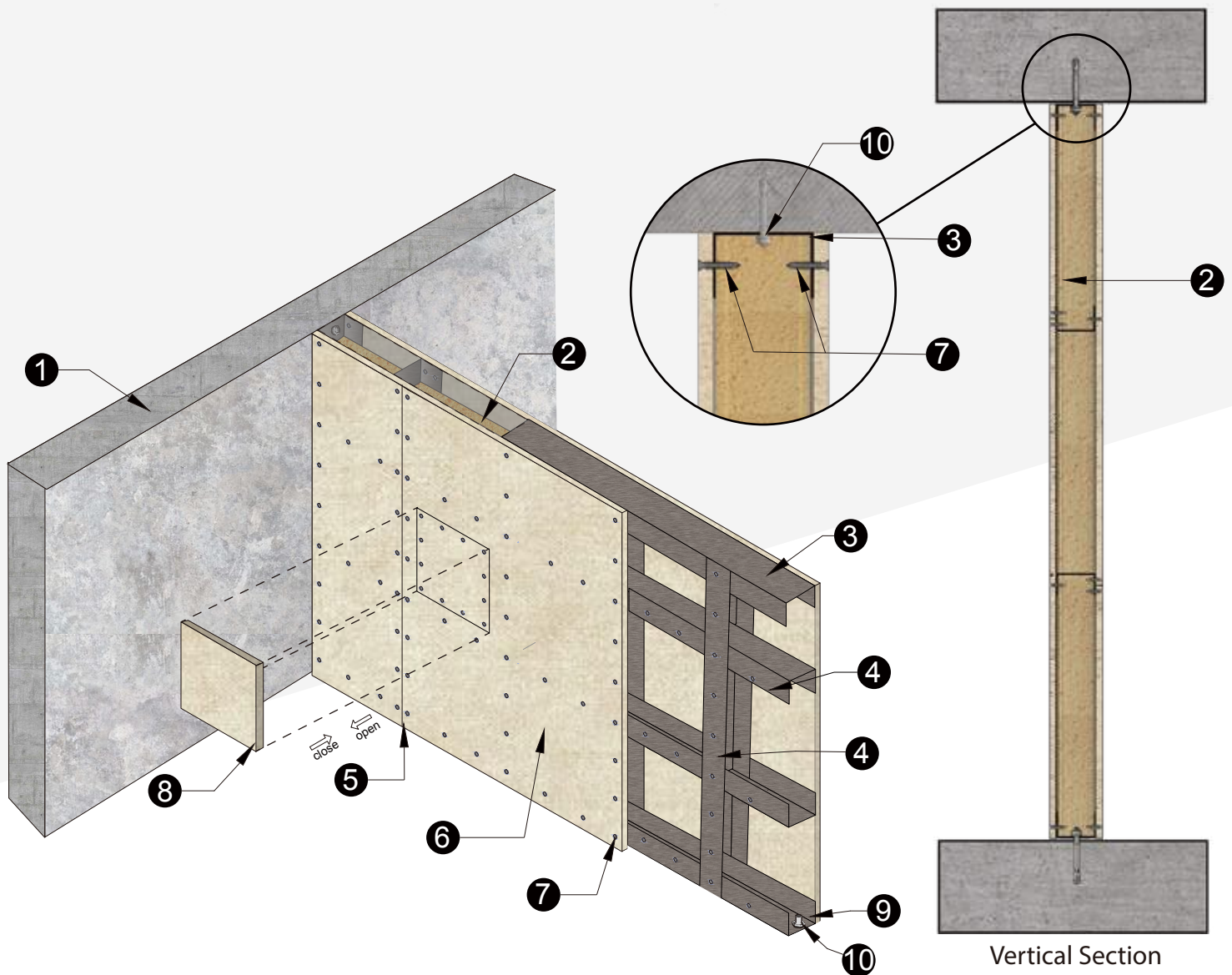
Technical Data:

- | | |
|---|--|
| <ul style="list-style-type: none"> 1 WINS H-Tec fire protection panel, 9mm thick 2 WINS H-Tec fire protection fillet, 100mm width, 9mm thick (inside or outside) positioned all board joints, except the corner longitudinal joints 3 Enclosure support, steel C-channel or L-angles 4 Steel hanger rod at nominal 1000mm centres sizes according to limiting stress 5 Steel channel collar, 32x50x0.5mm thick at butt joints at nominal 1220mm centers 6 Steel cable tray 7 Steel angle minimum 25x25x0.6mm thick 8 M6 all steel expanding fixing at 500mm nominal centers | <ul style="list-style-type: none"> 9 M4 Self-tapping screw at nominal 200mm centers 10 General E&M services. e.g. cable trunking and steel pipe etc. 11 Cantilever arm at maximum 1250mm centers 12 Steel angle minimum 50x50x0.9mm thick fasten the serviceduct to the wall at nominal 1200mm centers 13 Construction wall 14 Concrete floor 15 C-channel 50x50x50x0.6mm thick 16 Access panel not exceeding 610mmx610mm 17 Steel stud channel 32x50x32x0.5mm thick |
|---|--|

WINS H-TEC FIRE PROTECTION PANEL

9 mm Non-Loadbearing partition System

2 HOURS FIRE RATING, INTEGRITY AND INSULATION IN ACCORDANCE WITH BS EN 1364-1:2015



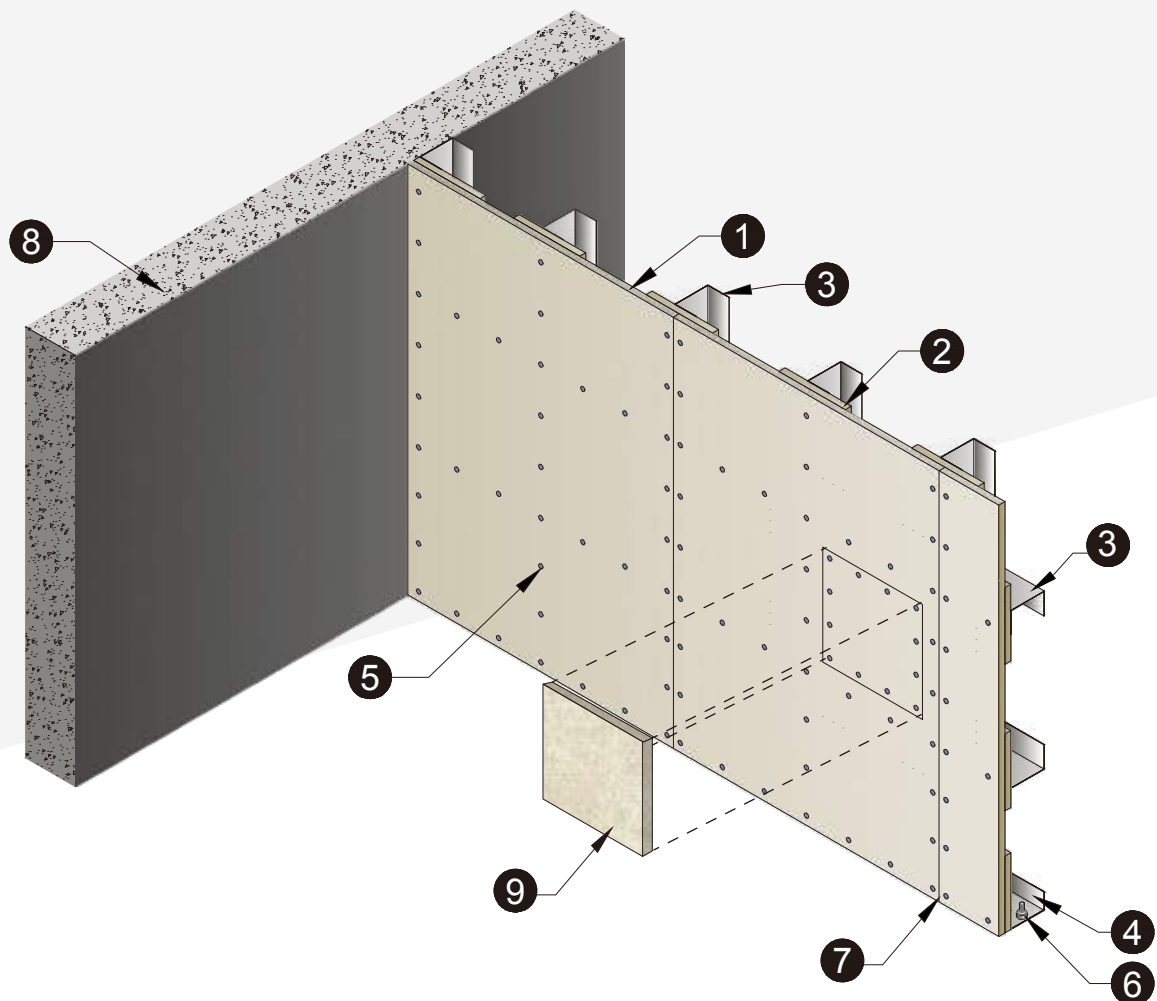
Technical Data:

- | | |
|--|---|
| <ul style="list-style-type: none"> 1 Wall 2 Rock wool density 80kg/m³ by 50mm thick 3 Ceiling perimeter steel channel 24x50x24x0.5mm 4 Steel stud channel 32x50x32x0.5mm thick, @610mm c/c (vertical) @ 813mm c/c (horizontal) 5 Board Joint, sealed with fire retardant sealant | <ul style="list-style-type: none"> 6 Wins H-Tec Fire Protection Panel 9mm thick 7 M4 Self-tapping screw, @200mm c/c 8 Access Panel (any panel surface) (optional) 9 Floor perimeter steel channel 24x50x24x0.5mm 10 M6 anchor bolt, @610mm c/c |
|--|---|

WINS H-TEC FIRE PROTECTION PANEL

9 mm Non-Loadbearing partition System

4 HOUR FIRE RATING, INTEGRITY IN ACCORDANCE WITH BS EN 1364-1:2015



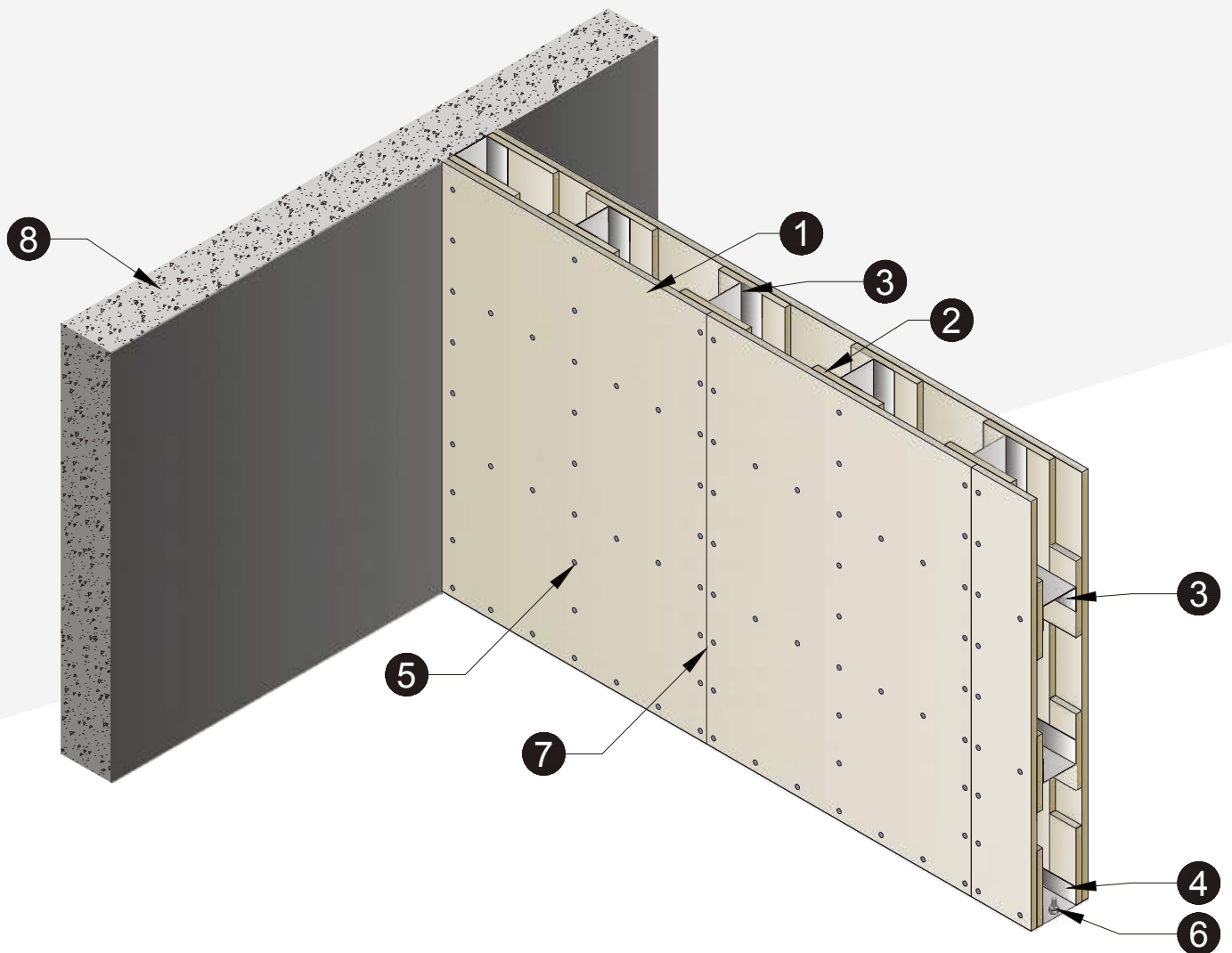
Technical Data :

- | | |
|---|---|
| 1 Wins H-Tec Fire Protection Panel, 9mm thick | 5 M4 Self-tapping screw, @200mm c/c |
| 2 Wins H-Tec Fire Protection Panel Fillet, 9mm thick, 100mm width | 6 M6 steel anchor bolt, @610mm c/c |
| 3 Steel stud channel 32x50x32x0.5mm thick, @610mm c/c | 7 Board Joint, sealed with fire retardant sealant |
| 4 Ceiling floor perimeter steel channel 24x50x24x0.5mm | 8 Wall |
| | 9 Access Panel (any panel surface) (optional) |

WINS H-TEC FIRE PROTECTION PANEL

9 mm Non-Loadbearing partition System

4 HOUR FIRE RATING, INTEGRITY IN ACCORDANCE WITH BS EN 1364-1:2015



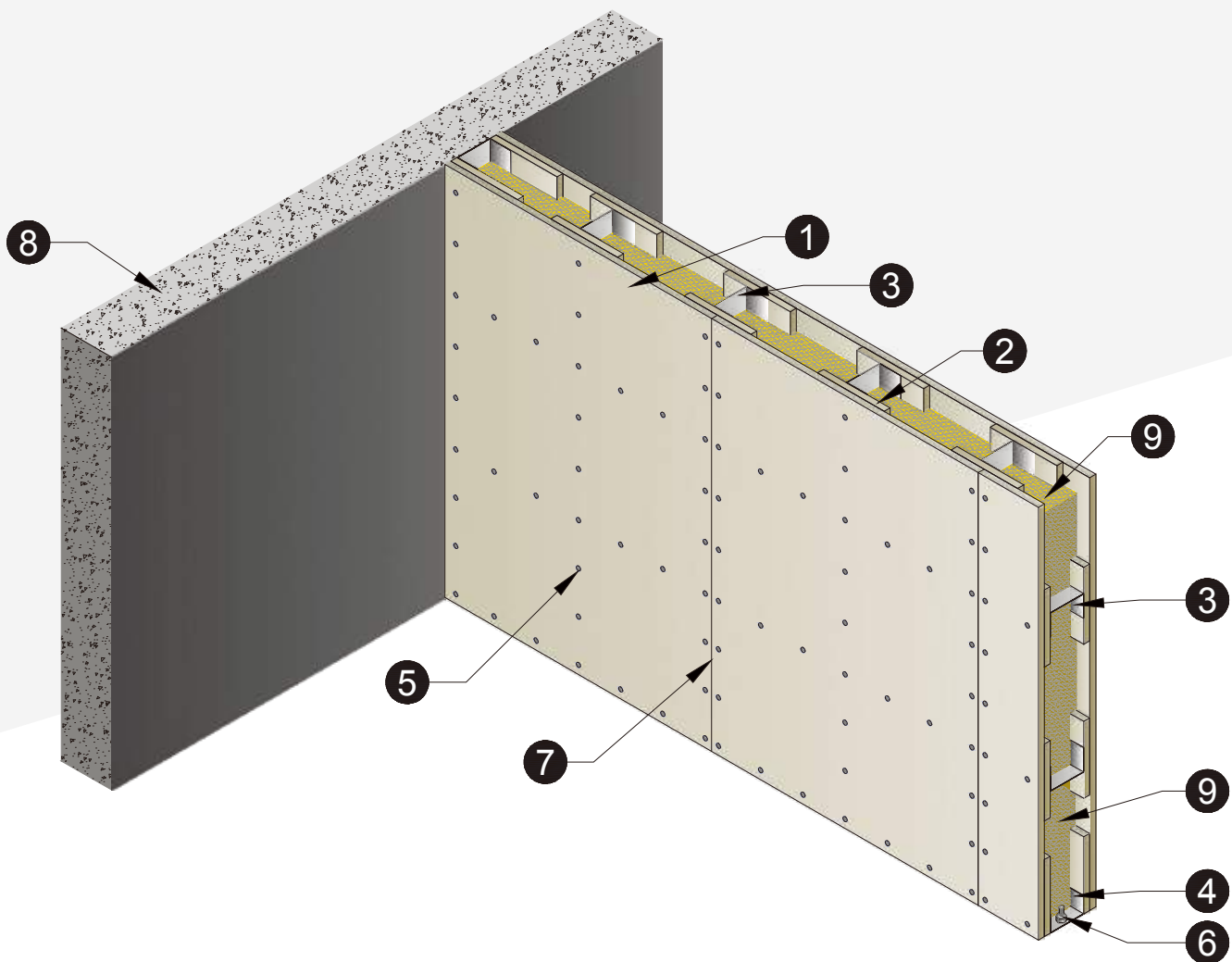
Technical Data :

- | | |
|--|--|
| 1 Wins H-Tec Fire Protection Panel, 9mm thick | 5 M4 Self-tapping screw, @200mm c/c |
| 2 Wins H-Tec Fire Protection Panel Fillet, 9mm thick, 100mm width | 6 M6 steel anchor bolt, @610mm c/c |
| 3 Steel stud channel 32x50x32x0.5mm thick, @610mm c/c | 7 Board Joint, sealed with fire retardant sealant |
| 4 Ceiling floor perimeter steel channel 24x50x24x0.5mm | 8 Wall |

WINS H-TEC FIRE PROTECTION PANEL

9 mm Non-Loadbearing partition System

4 HOUR FIRE RATING, INTEGRITY AND INSULATION IN ACCORDANCE WITH BS EN 1364-1:1999



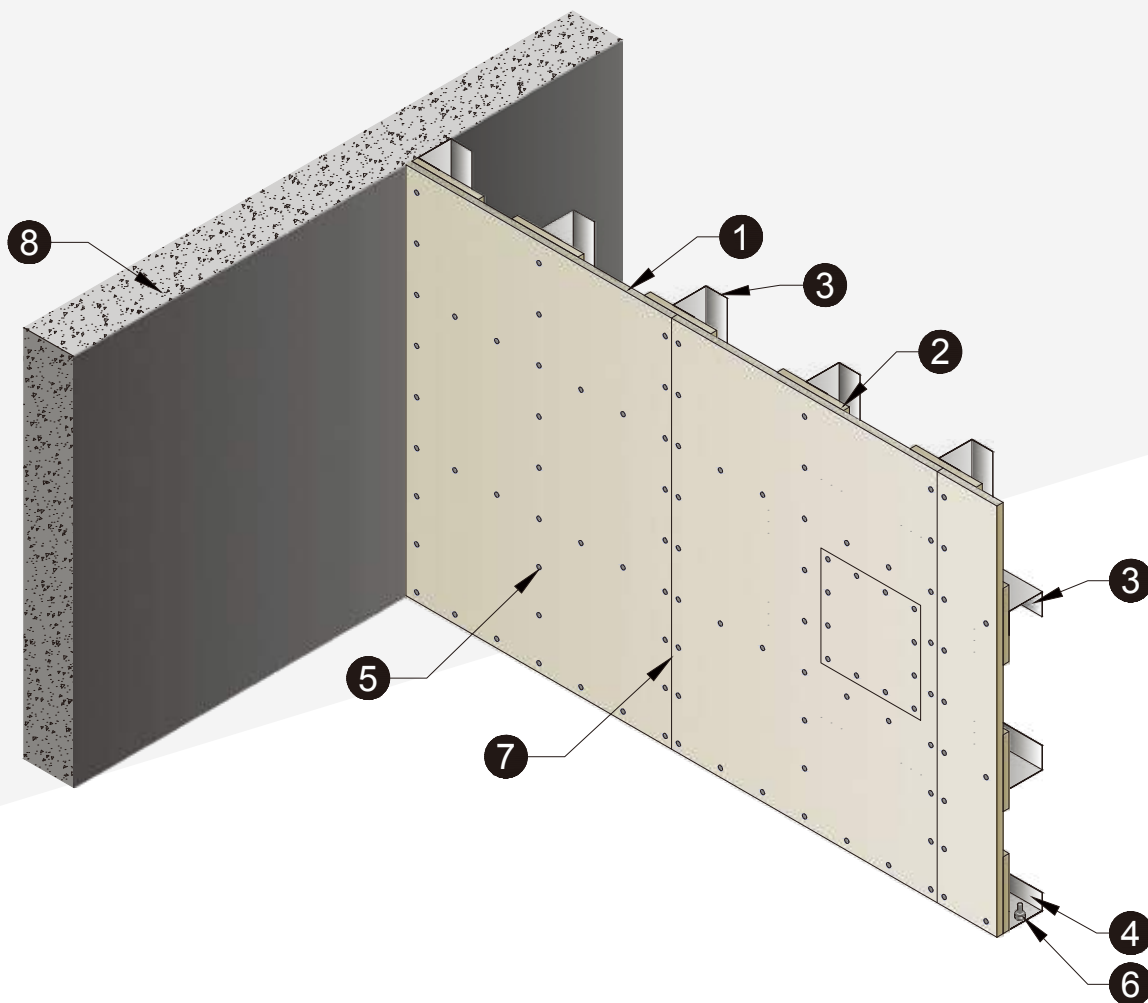
Technical Data :

- | | |
|---|---|
| 1 Wins H-Tec Fire Protection Panel, 9mm thick | 5 M4 Self-tapping screw, @200mm c/c |
| 2 Wins H-Tec Fire Protection Panel Fillet, 9mm thick, 100mm width | 6 M6 steel anchor bolt, @610mm c/c |
| 3 Steel stud channel 32x50x32x0.5mm thick, @610mm c/c | 7 Board Joint, sealed with fire retardant sealant |
| 4 Ceiling floor perimeter steel channel 24x50x24x0.5mm | 8 Wall |
| | 9 Rock wool density 80kg/m ³ by 50mm thick |

WINS H-TEC FIRE PROTECTION PANEL

12 mm Non-Loadbearing partition System

4 HOURS FIRE RATING, INTEGRITY IN ACCORDANCE WITH BS EN 1364-1:2015



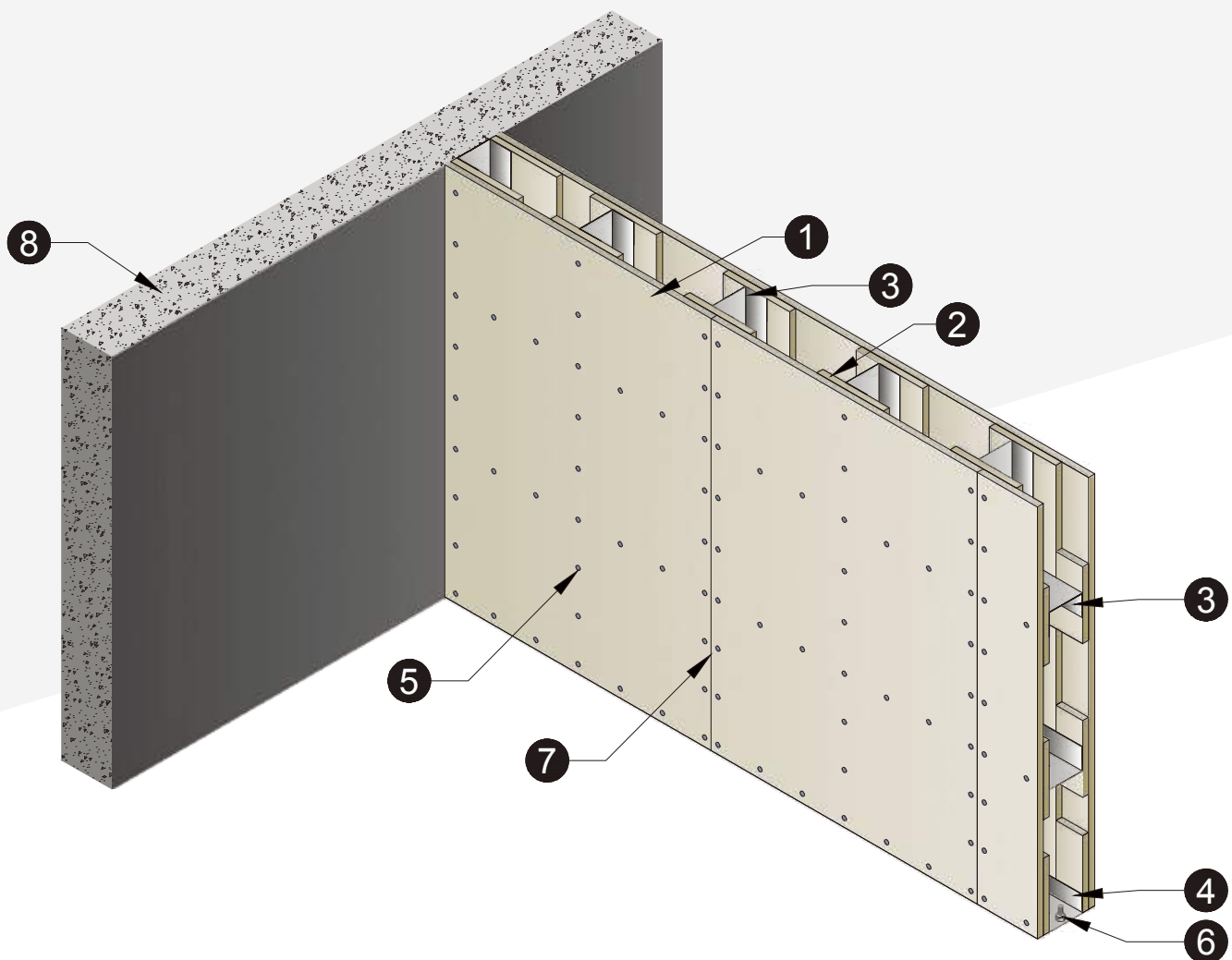
Technical Data :

- | | | | |
|---|--|---|---|
| 1 | Wins H-Tec Fire Protection Panel, 12mm thick | 5 | M4 Self-tapping screw, @200mm c/c |
| 2 | Wins H-Tec Fire Protection Panel Fillet, 12mm thick, 100mm width | 6 | M6 steel anchor bolt, @610mm c/c |
| 3 | Steel stud channel 32x50x32x0.5mm thick, @610mm c/c | 7 | Board Joint, sealed with fire retardant sealant |
| 4 | Ceiling floor perimeter steel channel 24x50x24x0.5mm | 8 | Wall |

WINS H-TEC FIRE PROTECTION PANEL

12 mm Non-Loadbearing partition System

4 HOURS FIRE RATING, INTEGRITY IN ACCORDANCE WITH BS EN 1364-1:2015



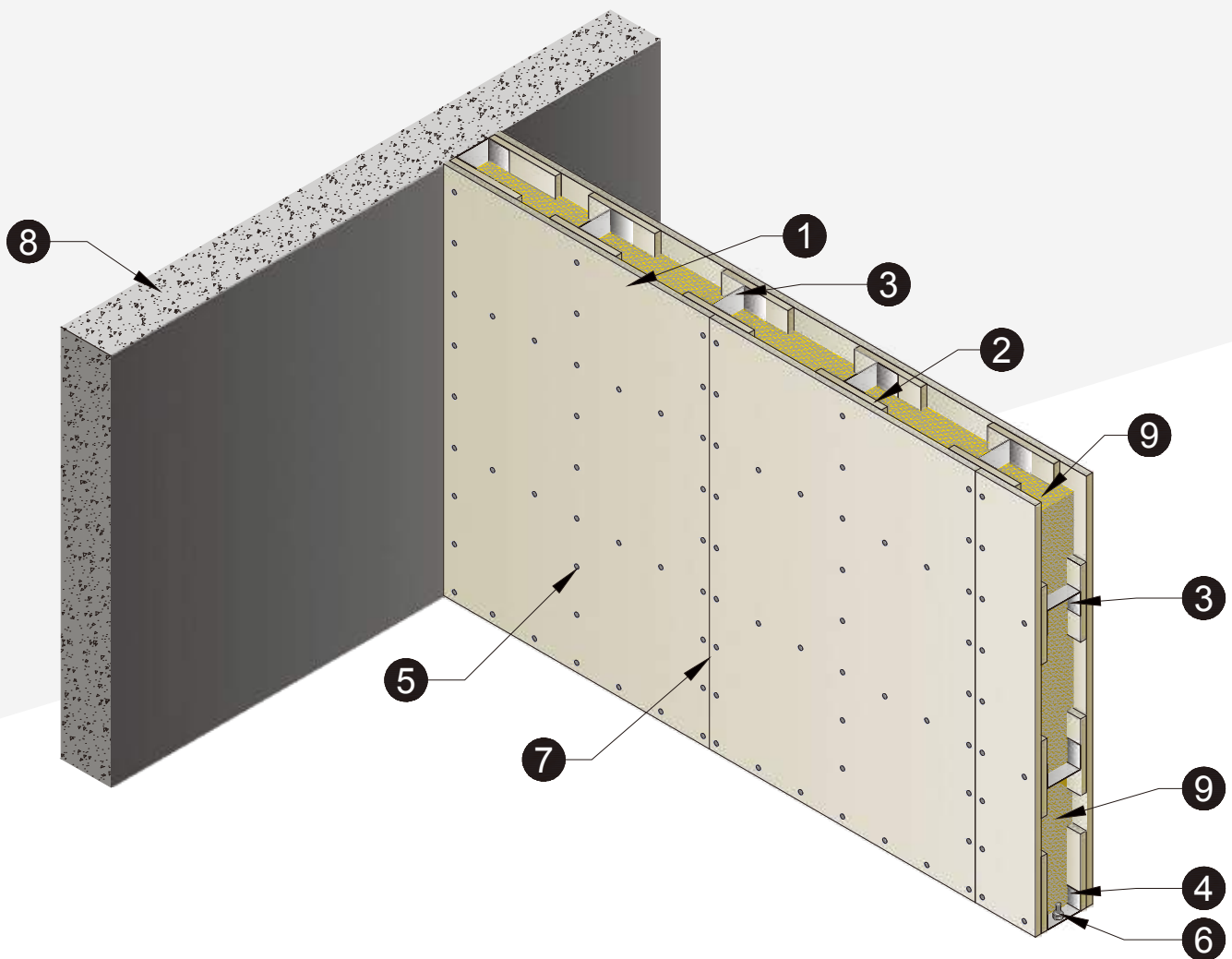
Technical Data :

- | | |
|---|--|
| 1 Wins H-Tec Fire Protection Panel, 12mm thick | 5 M4 Self-tapping screw, @200mm c/c |
| 2 Wins H-Tec Fire Protection Panel Fillet, 12mm thick, 100mm width | 6 M6 steel anchor bolt, @610mm c/c |
| 3 Steel stud channel 32x50x32x0.5mm thick, @610mm c/c | 7 Board Joint, sealed with fire retardant sealant |
| 4 Ceiling floor perimeter steel channel 24x50x24x0.5mm | 8 Wall |

WINS H-TEC FIRE PROTECTION PANEL

12 mm Non-Loadbearing partition System

4 HOURS FIRE RATING, INTEGRITY AND ISULATION IN ACCORDANCE WITH BS EN 1364-1:1999



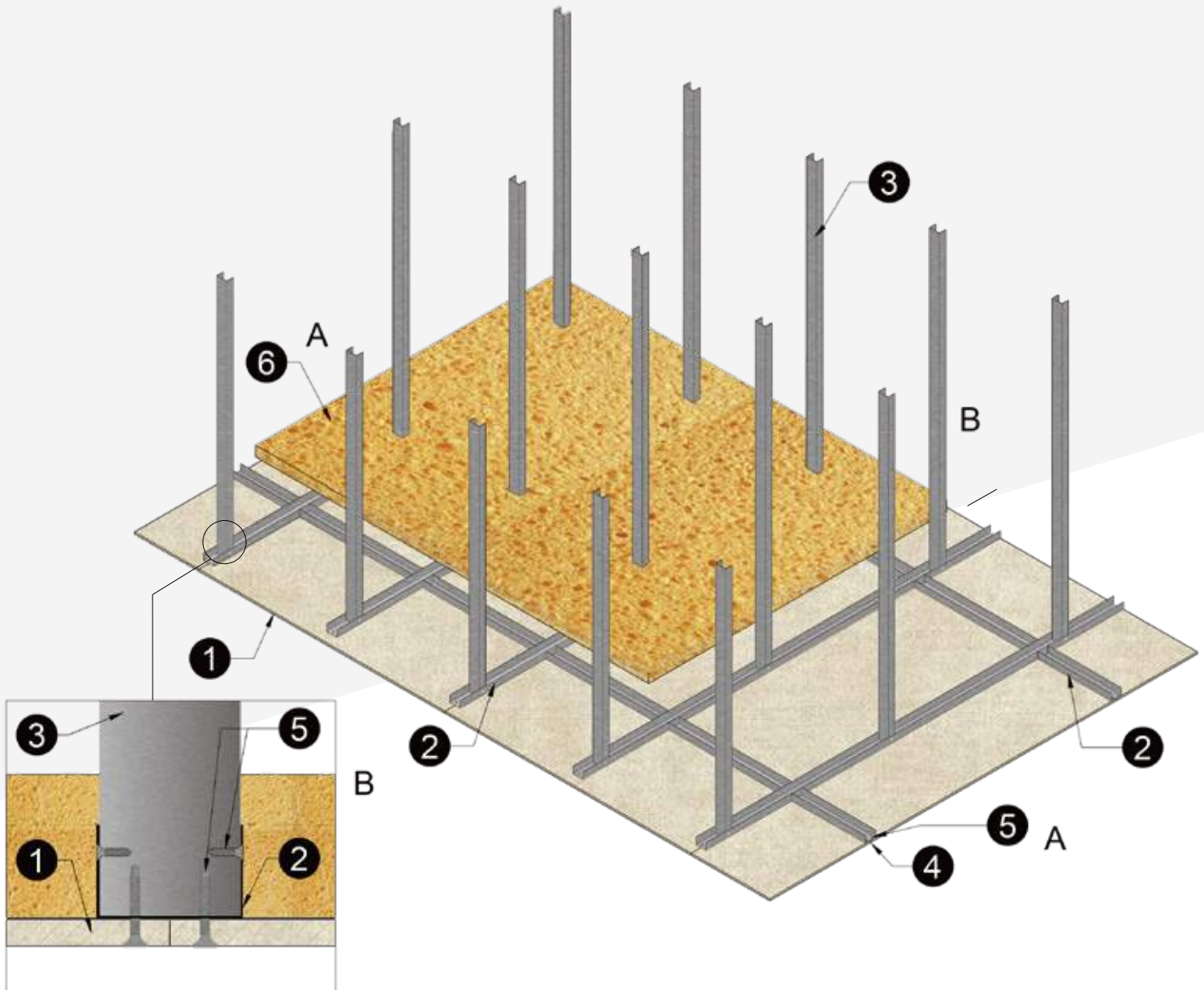
Technical Data :

- | | | | |
|---|--|---|---|
| 1 | Wins H-Tec Fire Protection Panel, 12mm thick | 5 | M4 Self-tapping screw, @200mm c/c |
| 2 | Wins H-Tec Fire Protection Panel Fillet, 12mm thick, 100mm width | 6 | M6 steel anchor bolt, @610mm c/c |
| 3 | Steel stud channel 32x50x32x0.5mm thick, @610mm c/c | 7 | Board Joint, sealed with fire retardant sealant |
| 4 | Ceiling floor perimeter steel channel 24x50x24x0.5mm | 8 | Wall |
| | | 9 | Rock wool density 80kg/m ³ by 50mm thick |

H-TEC FIRE PROTECTION PANEL

9mm Non-Loadbearing Ceiling System

1 HOUR FIRE RATING, INTEGRITY AND INSULATION IN ACCORDANCE WITH BS EN 1364-2:2018



FIXING DETAIL

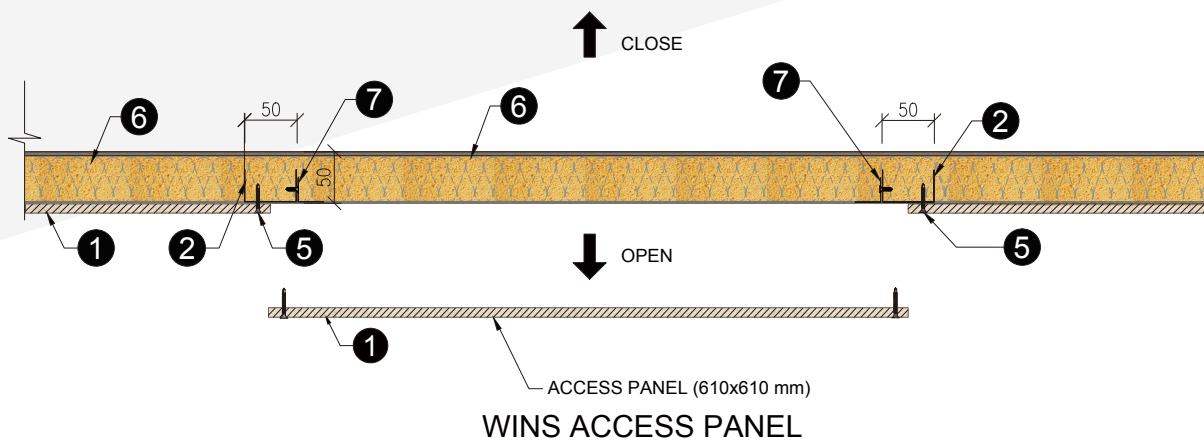
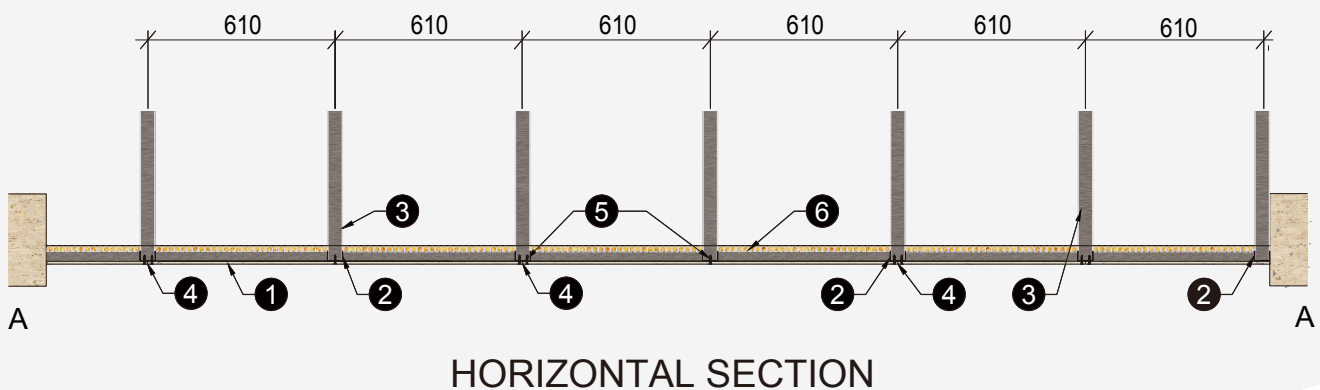
Technical Data:

- | | |
|--|---|
| <ul style="list-style-type: none"> 1 Wins H-Tec fire protection panel 9mm thick 2 Steel C-Channel at 610mm BY 813 mm centres
32x50x32x0.6mm thick 3 Hanger C-Channel
32x48x32x0.6mm thick | <ul style="list-style-type: none"> 4 Board joints, all gaps sealed with intumescent sealant 5 M4 Self Tapping Screws 6 Rockwool 100kg/m³ x 50mm thick |
|--|---|

H-TEC FIRE PROTECTION PANEL

9mm Non-Loadbearing Ceiling System

1 HOUR FIRE RATING, INTEGRITY AND INSULATION IN ACCORDANCE WITH BS EN 1364-2:2018



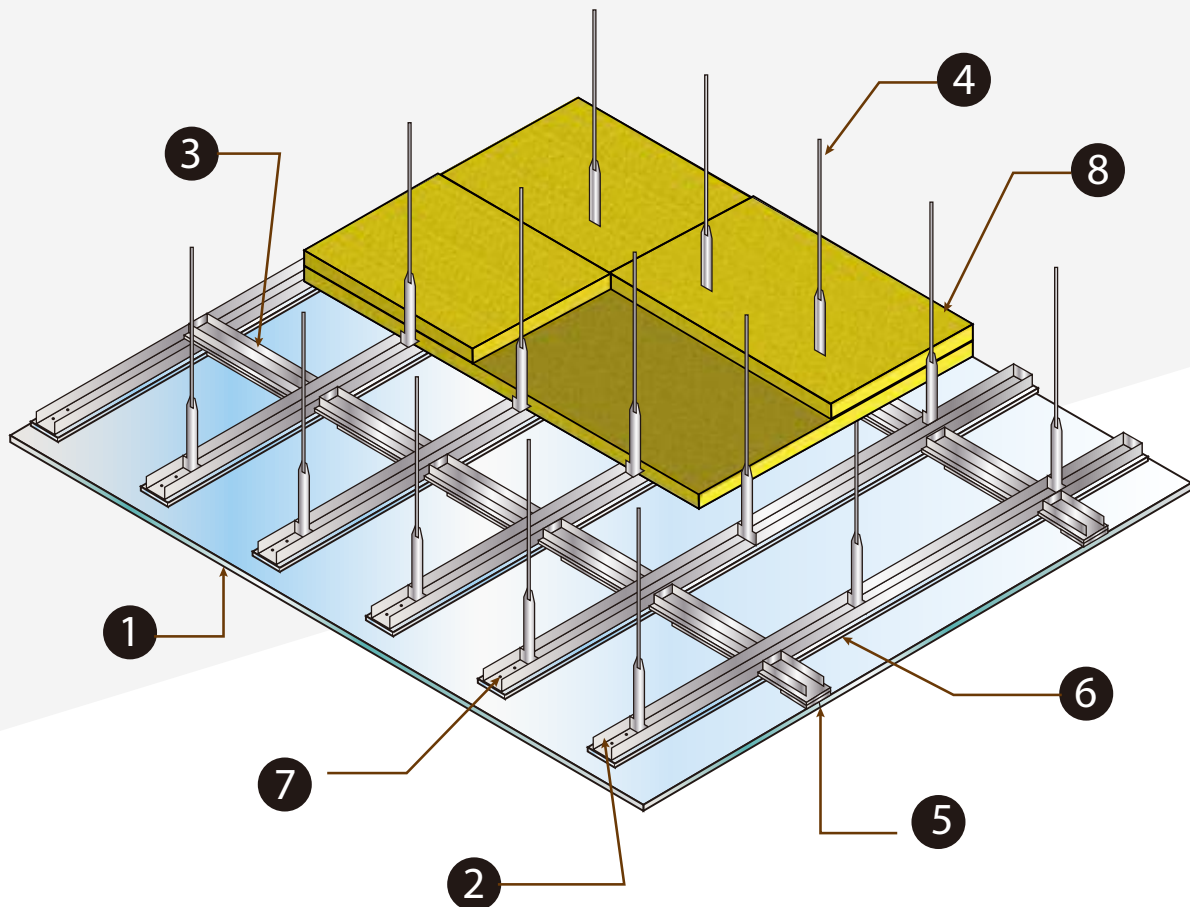
Technical Data:

- | | |
|---|--|
| <ul style="list-style-type: none"> 1 Wins H-Tec fire protection panel 9mm thick 2 Steel C-Channel at 610mm by 813mm Centres 32x50x32x0.6mm thick 3 Hanger- steel C-Channel 25x50x25x0.6mm thick | <ul style="list-style-type: none"> 4 Board joints, all gaps sealed with intumescent sealant 5 M4 Self tapping screws at normal 200mm centres 6 Rockwool 100kg/m³ x 50mm thick 7 Ceiling opening, stiffener galvanized steel angle 25x25x0.6mm thick |
|---|--|

H-TEC FIRE PROTECTION PANEL

9mm Non-Loadbearing Ceiling System

4 HOURS FIRE RATING, INTERGRITY AND INSULATION IN ACCORDANCE WITH BS EN 1364-2:1999



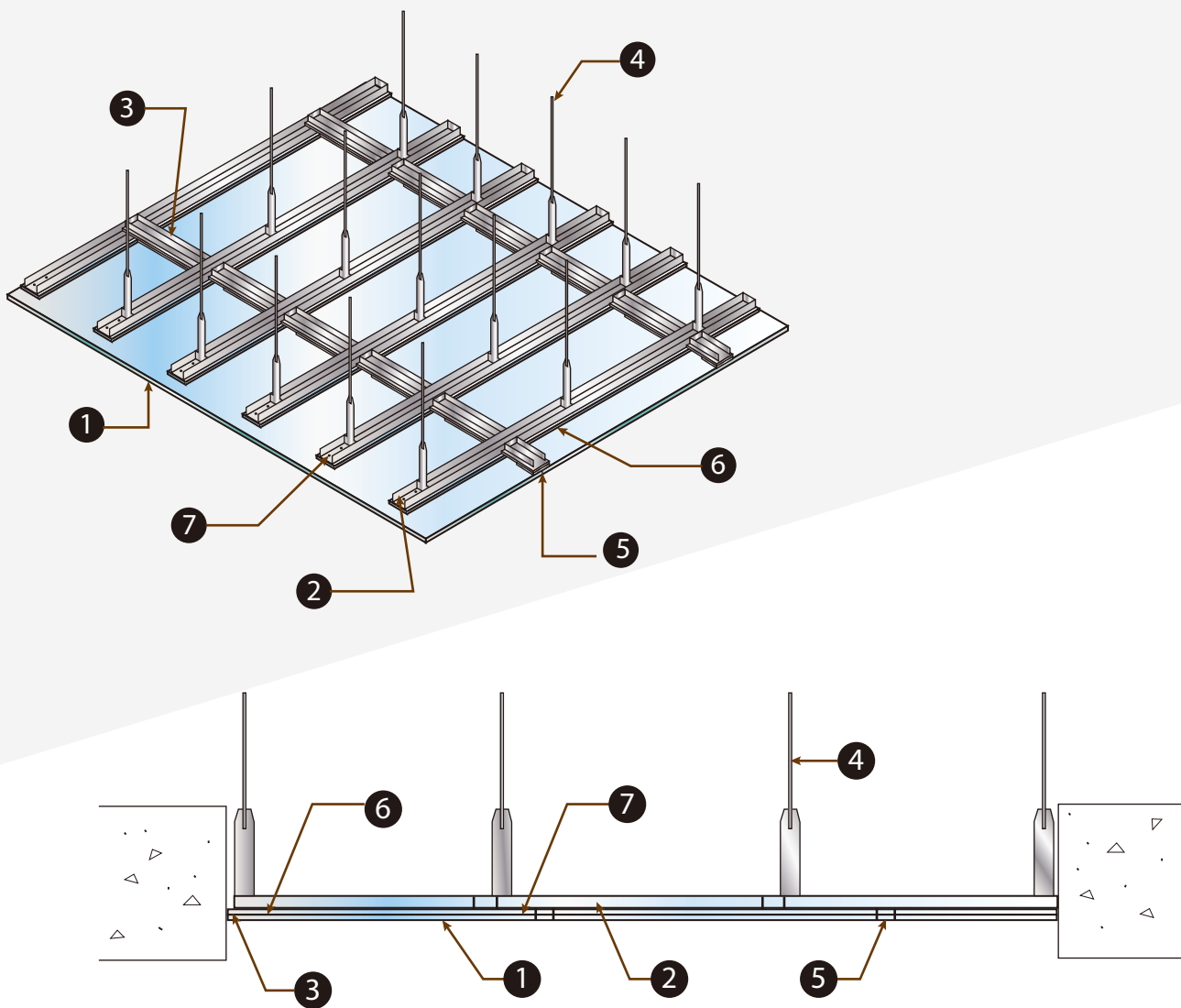
Technical Data:

- | | |
|--|--|
| <p>1 wins H-Tec fire protection panel 9mm thick</p> <p>2 steel C-channel at 610mm spacing 50 x 32 x 0.5mm thick</p> <p>3 furring channel / perimeter channel 50 x 25 x 0.5mm thick</p> <p>4 steel wire hanger @ 1000mm c/c</p> | <p>5 Board joints -all gaps sealed by intumescent sealant</p> <p>6 Wins H-tec fire protection fillet 100mm width 9mm thick</p> <p>7 Self tapping screws at nominal 200mm centres</p> <p>8 Rockwool,2 layers of 50mm thick,density 80kg/m³</p> |
|--|--|

H-TEC FIRE PROTECTION PANEL

9 mm Non-Loadbearing Ceiling System

4 HOURS FIRE RATING, INTERGRITY IN ACCORDANCE WITH BS EN 1364-2:1999

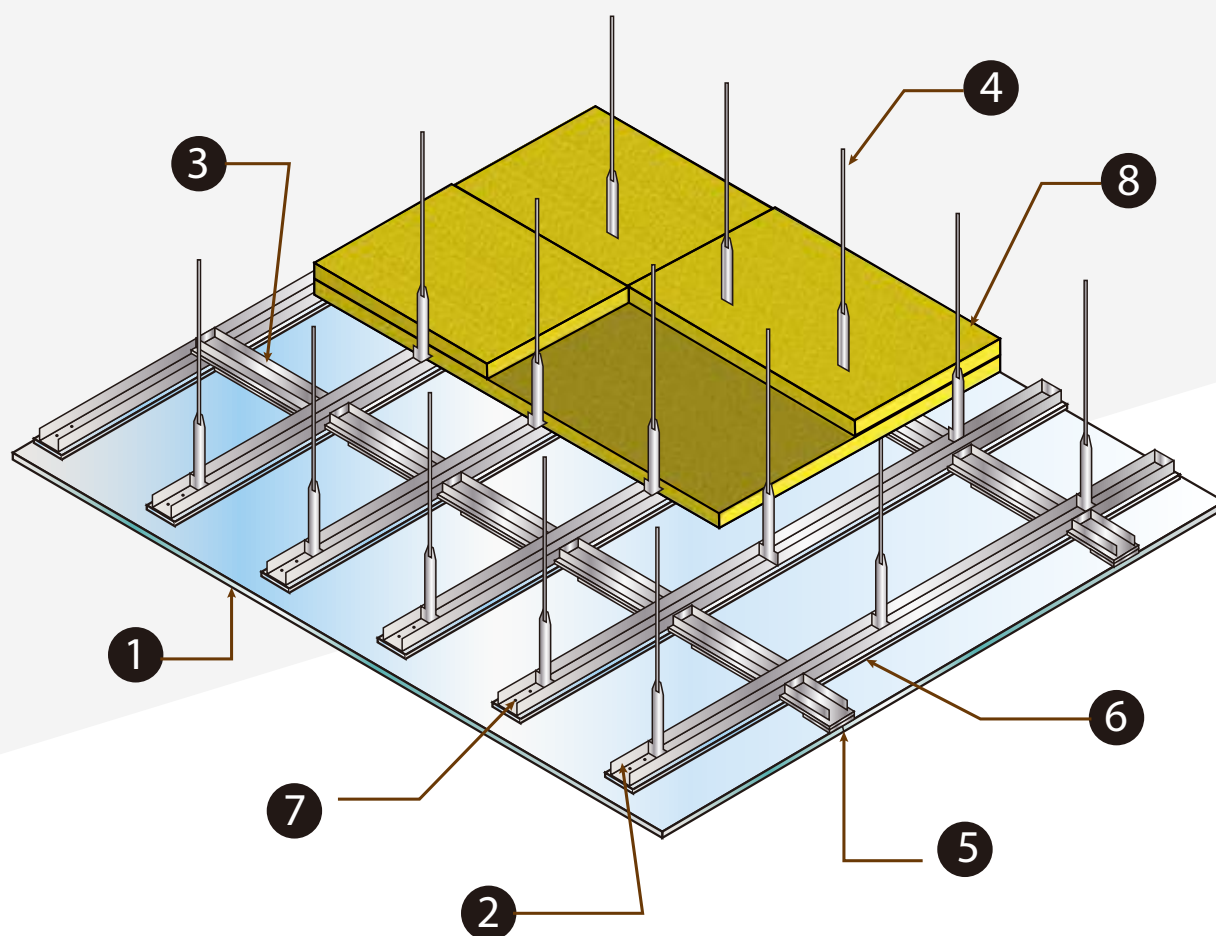


- 1 Wins H-tec fire protection panel 9mm thick
- 2 Steel C-channel at 610mm spacing 50x32x0.5mm thick
- 3 Furring channel/perimeter c-channel 50x25x0.5mm thick
- 4 Steel wire hanger @1000mm c/c
- 5 Board joints – all gaps sealed by intumescent sealant
- 6 Wins h-tec fire protection fillet, 100mm width 9mm thick
- 7 Self tapping screws at nominal 200mm centres

H-TEC FIRE PROTECTION PANEL

12mm Non-Loadbearing Ceiling System

4 HOURS FIRE RATING, INTERGRITY AND INSULATION IN ACCORDANCE WITH BS EN 1364-2:1999



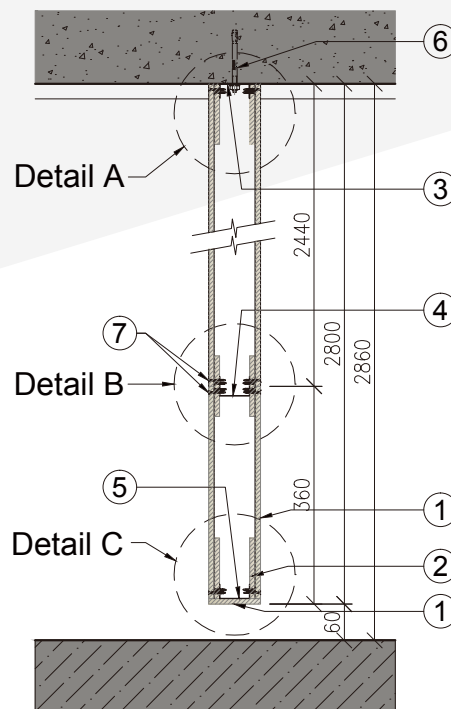
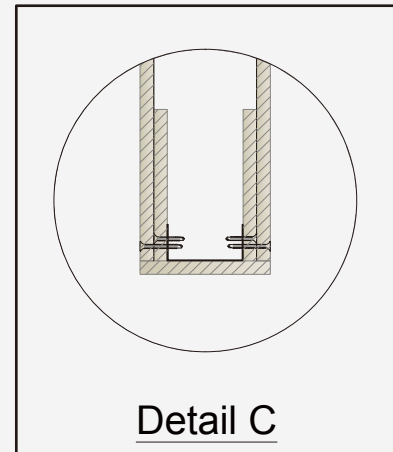
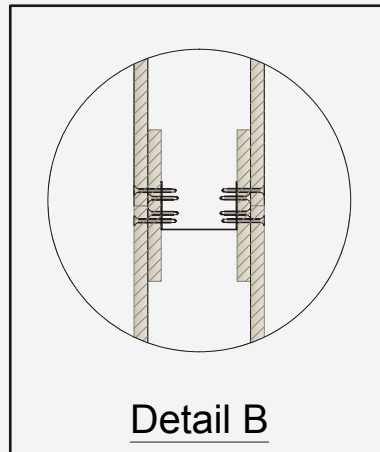
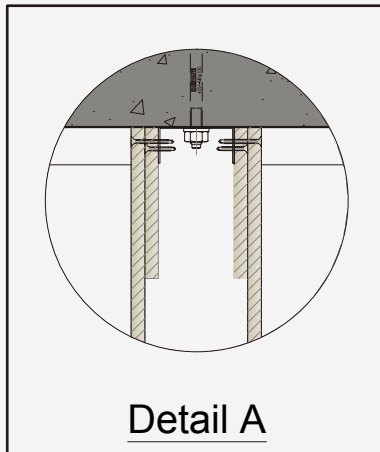
Technical Data:

- | | |
|---|---|
| <p>1 Wins H-tec fire protection panel 12mm thick</p> <p>2 Steel C-channel at 610mm spacing 50 x 32 x 0.5mm thick</p> <p>3 Furring channel / perimeter channel 50 x 25 x 0.5mm thick</p> <p>4 Steel wire hanger @ 1000mm c/c</p> | <p>5 Board joints -all gaps sealed by intumescent sealant</p> <p>6 Wins h-tec fire protection fillet 100mm width 9mm thick</p> <p>7 Self tapping screws at nominal 200mm centres</p> <p>8 Rockwool,2 layers of 50mm thick, density 80kg/m³</p> |
|---|---|

WINS H-TEC FIRE PROTECTION PANEL

9mm Smoke Barrier System

2 HOURS FIRE RATING, INTEGRITY IN ACCORDANCE WITH BS 476: Part 22: 1987



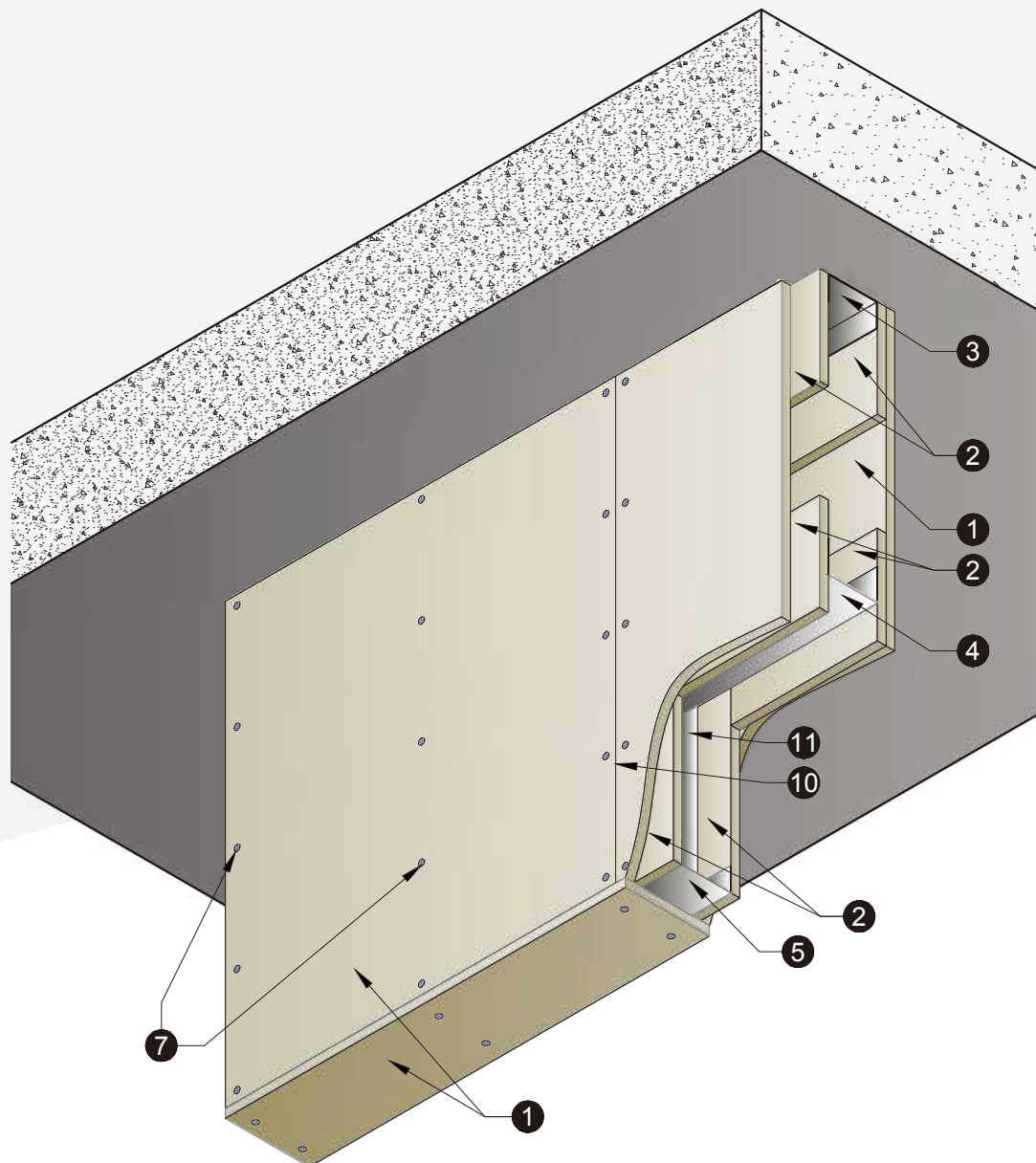
Technical Data :

- | | |
|--|---|
| <ul style="list-style-type: none"> 1 Wins H-Tec Fire Protection Panel, 9mm thick 2 Wins H-Tec Fire Protection Fillets 100mm wide x 9mm thick 3 Top steel channel, 24mmx50mmx24mmx1mm thick 4 Horizontal steel stud, 32mmx50mmx32mmx0.5mm thick 5 Bottom steel channel, 24mmx50mmx24mmx0.5mm thick | <ul style="list-style-type: none"> 6 M8 anchor bolt, @610mm c/c 7 M4x25mm self-tapping screw, @200mm c/c 8 Furnace wall 9 30mm free edge 10 Board Joints with fire retardant sealant 11 Vertical steel stud, 32mmx50mmx32mmx0.5mm thick, @610mm c/c |
|--|---|

WINS H-TEC FIRE PROTECTION PANEL

9mm Smoke Barrier System

2 HOURS FIRE RATING, INTEGRITY IN ACCORDANCE WITH BS 476: Part 22: 1987



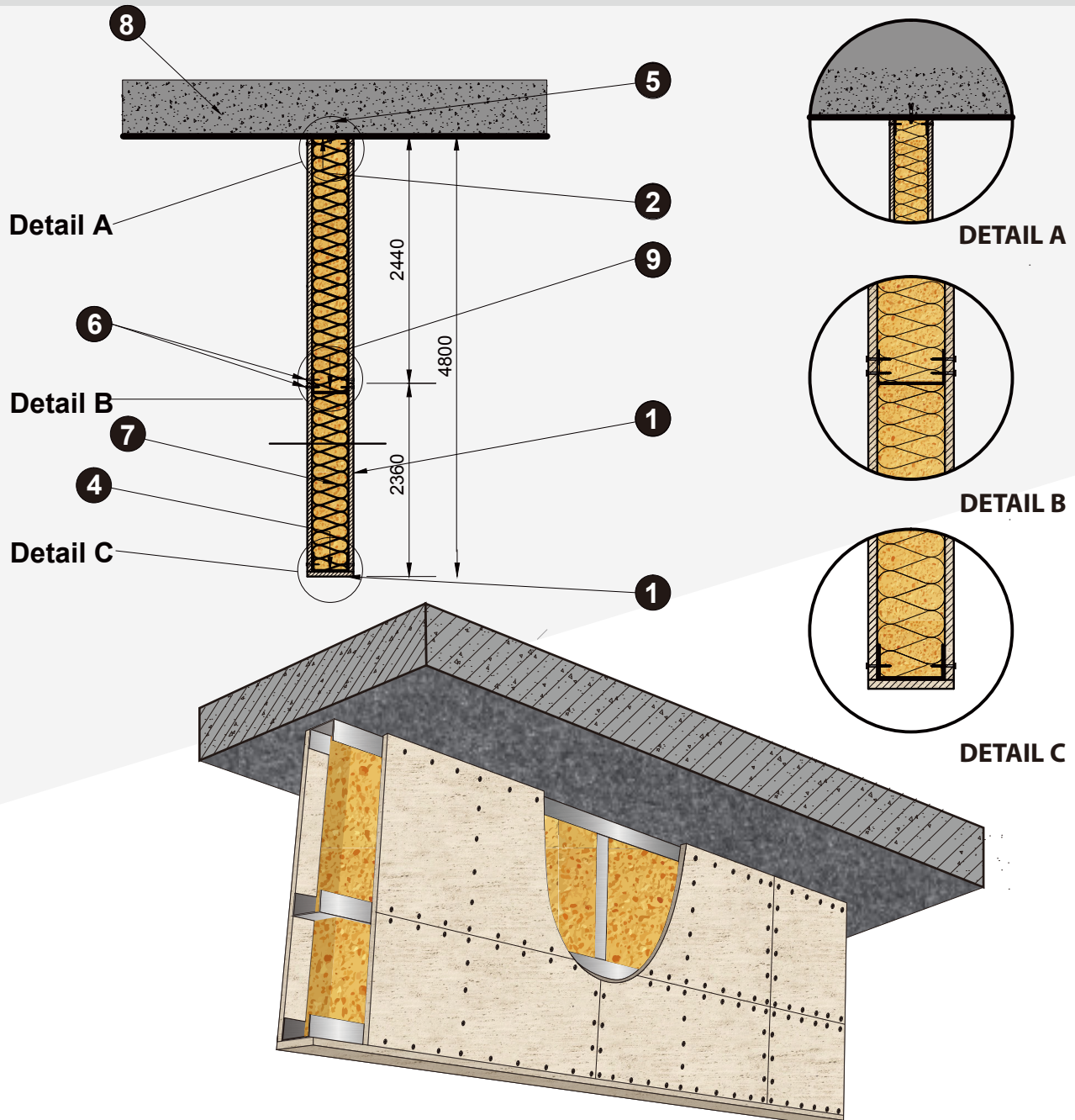
Technical Data :

- | | |
|--|---|
| 1 Wins H-Tec Fire Protection Panel, 9mm thick | 6 M8 anchor bolt, @610mm c/c |
| 2 Wins H-Tec Fire Protection Fillets 100mm wide x 9mm thick | 7 M4x25mm self-tapping screw, @200mm c/c |
| 3 Top steel channel, 24mmx50mmx24mmx1mm thick | 8 Furnace wall |
| 4 Horizontal steel stud, 32mmx50mmx32mmx0.5mm thick | 9 30mm free edge |
| 5 Bottom steel channel, 24mmx50mmx24mmx0.5mm thick | 10 Board Joints with fire retardant sealant |
| | 11 Vertical steel stud, 32mmx50mmx32mmx0.5mm thick, @610mm c/c |

H-TEC FIRE PROTECTION PANEL

9mm Smoke Barrier System

1-2 HOURS FIRE RATING, INTEGRITY AND INSULATION IN ACCORDANCE WITH
BS EN 1363-1:2012 and BS EN 1364-1:2015



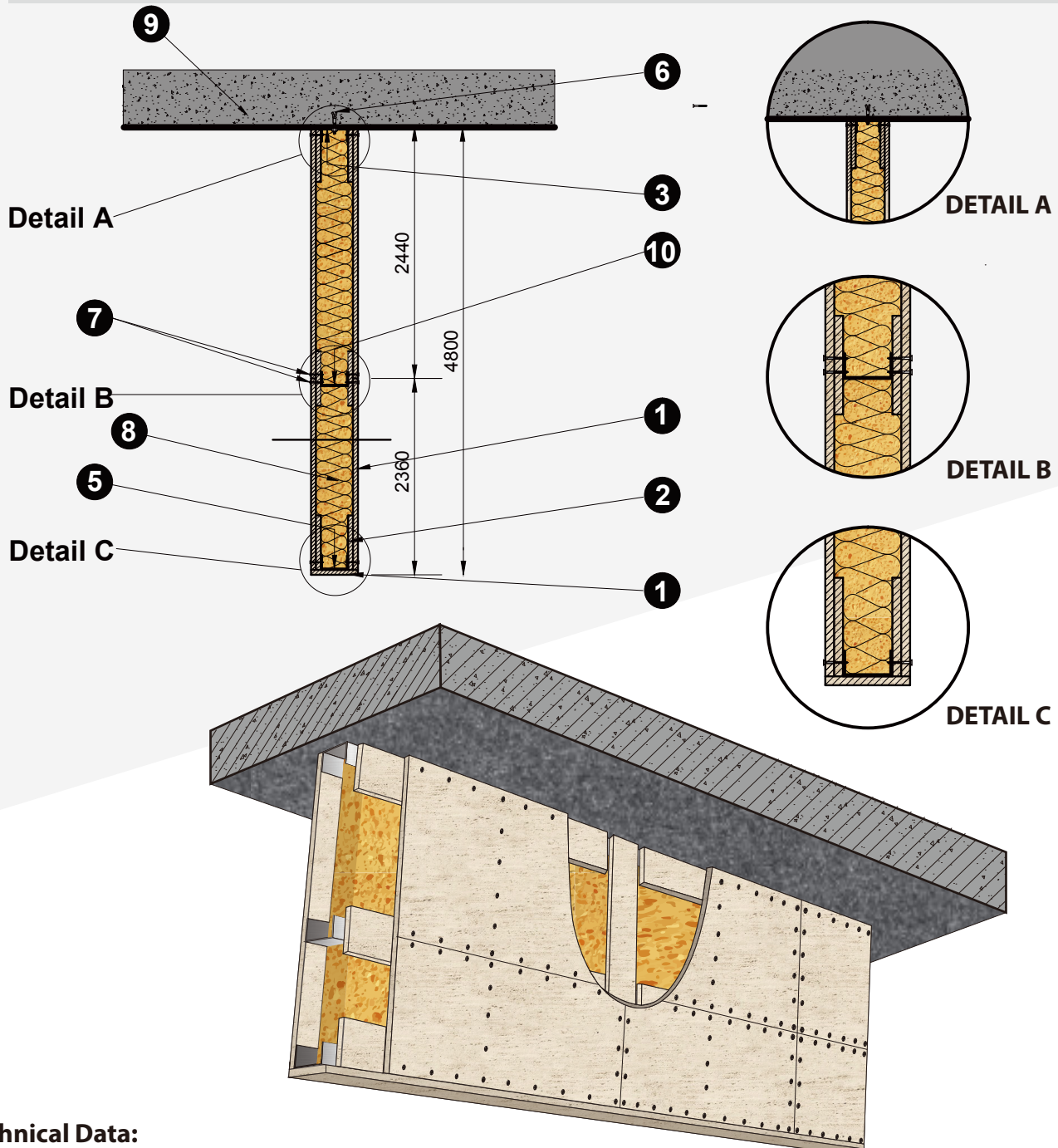
Technical Data:

- | | |
|--|--|
| 1 Wins H-TEC Fire Protection Panel, 9mm Thick | 5 M8 anchor bolt, @610mm c/c (Minimum penetration 50 mm) |
| 2 Top steel channel 50mmx50mmx50mmx1mm
(1.6mm thick channel is used for hanging depth over 1.0 m) | 6 M4 self tapping screw, @200mm c/c |
| 3 Vertical steel stud 32mmx50mmx32mmx0.5mm | 7 Rock wool, 80kg/m ³ , 50mm thick |
| 4 Bottom steel channel 24mmx50mmx24mmx0.5mm | 8 Concrete ceiling |
| | 9 Horizontal noggings at all board joints |

H-TEC FIRE PROTECTION PANEL

9mm Smoke Barrier System

4 HOURS FIRE RATING, INTEGRITY AND INSULATION IN ACCORDANCE WITH
BS EN 1363-1:2012 and BS EN 1364-1:2015



Technical Data:

- | | |
|---|---|
| <ul style="list-style-type: none"> 1 Wins H-TEC Fire Protection Panel, 9mm Thick 2 Wins H-Tec Fire Protection Fillet 100mm wide x 9mm thick 3 Top steel channel 50mmx50mmx50mmx1mm (1.6mm thick channel is used for hanging depth over 1.0 m) 4 Vertical steel stud 32mmx50mmx32mmx0.5mm 5 Bottom steel channel 24mmx50mmx24mmx0.5mm | <ul style="list-style-type: none"> 6 M8 anchor bolt, @610mm c/c (Minimum penetration 50 mm) 7 M4 self tapping screw, @200mm c/c 8 Rock wool, 80kg/m³, 50mm thick 9 Concrete ceiling 10 Horizontal nogging at all board joints |
|---|---|



Website : www.winsconsultants.com