



THE WELFARE
Y NEUADD LES
YSTRADGYNLAIS



August 2016 - January 2017

01639 843163
www.thewelfare.co.uk





Community & Arts WEEKLY

Friends Tea Bar

Tuesdays 12 – 2pm & Fridays 10am – 12pm

Dydd Mawrth 11am – 1pm a Dydd Gwener 10yb – 12yp

During the 84 Miner's Strike, volunteers of the Ystradgynlais Miner's Support Group set up a fundraising Tea Bar in our Lesser Hall, which has been running ever since! Now run by 'Friends of the Hall', we serve fresh filled rolls, homemade cakes & hot drinks.

Artists will occasionally be present to lead arts and crafts activity. Carers Organisations are welcome to encourage attendance.

Yn ystod Streic y Glowyr 84, sefydlodd gwirfoddolwyr o Grŵp Cymorth Glowyr Ystradgynlais Far Te i godi arian yn ein Neuadd Leiaf, sydd wedi bod yn rhedeg ers hynny! Mae'r Bar Te sydd bellach yn cael ei redeg gan 'Gyfeillion y Neuadd', yn cynnig rholiau ffres wedi'u llenwi, cacennau cartref, sgons hufen blasus a diodydd poeth.

Bydd artistiaid yn bresennol yn achlysurol i arwain gweithgaredd celf a chrefft. Mae croeso i Sefydliadau Gofalwyr i hybu presenoldeb.

Nexus Arts

"Performing & Creative Arts For All" "Celfyddydau Perfformio a Chreadigol i Bawb"

Tuesdays 1.30 – 3.30pm £3 per session, Carers free

Dydd Mawrth 1.30 – 3.30yp £3 y sesiwn, Gofalwyr yn rhad ac am ddim

Drama, Dance and Visual Arts for an integrated group of Adults and Adults with Learning Disabilities.

With Michelle McTernan, Carol Brown, Nick Woodrow, Viv Rhule and other Artists.

Drama, Dawns a Chelfyddydau Gweledol ar gyfer grŵp integredig o Oedolion ac Oedolion ag Anableddau Dysgu.

Cyda Michelle McTernan, Carol Brown, Nick Woodrow, Viv Rhule ac Artistiaid eraill.



01639 843163

www.thewelfare.co.uk



Community Art Makers and Music Makers

'Youth arts and music for 11-18 year olds.'

'Celfyddydau leuenctid i bobl 11 i 18 mlwydd oed.'

**Tuesdays / Dydd Mawrth
6.30pm - 8pm**

(from September) (Dechrau Mis Medi)

Free (Advance registration essential)
Am Ddim (rhaid cofrestru ymlaen llaw)

The Performance Factory

Tuesdays 4.15pm - 5.15pm ages 3-6

5.15pm - 7.15pm ages 6+

Dydd Mawrth 4.15yp-5.15yp oedranau 3-6

5.15yp-7.15yp oedranau 6+

'Guiding and shaping the stars of tomorrow.'

'Llywio sêr yfory.'

Contact for more information:

01792 701570

Cysylltwch â **01792 701570**
am ragor o wybodaeth.

Phoenix Arts

Wednesdays 10am - 1pm Free

Dydd Mercher 10yb - 1yp Am ddim

New creative workshops solely for women to develop self esteem, confidence and communications skills though the arts.

Come and meet new friends in a relaxed and creative environment and try out: Creative Writing, Drama, Visual Arts, Photography, Jewellery, Felt-Making and much more.

Gweithdai creadigol newydd i fenywod yn unig i ddatblygu hunan-barch, hyder a sgiliau cyfathrebu drwy'r celfyddydau.

Dewch i gyfarfod ffrindiau newydd mewn amgylchedd ymlaciol a chreadigol a rhowch gynnig ar: Ysgrifennu Creadigol, Drama, Celfyddydau Gweledol, Ffotograffiaeth, Gemwaith, Gwneud Ffelt a llawer mwy.



Lovetodance Academy

Saturday morning.
Bore dydd Sadwrn.

Learn the arts of ballet, tap and modern jazz for all ages; 3 years old to adult. Contact the school for more information. *Dysgwch bale, tap a jas modern; 3 blwydd oed i oedolion.*

07795180286

helen@lovetodance-cymru.com

Facebook: **lovetodance academy**

www.lovetodance-cymru.com

Platfform Youth Theatre

Sundays 2 – 5pm

Dydd Sul 2 – 5yp

‘Youth Theatre for 14 to 18 year olds’
‘Theatr leuencid i rai 14 i 18 oed’

Free (Advance registration essential)

With **Theatr Iolo / Tracy Harris / Paul Jenkins**

Am ddim (rhaid cofrestru ymlaen llaw)

Gyda Theatr Iolo / Tracy Harris / Paul Jenkins

Pure Imagination

August 22 - 24 10am - 1pm

A phizz-whizzing, whoopsy-waffling, workshop for ages 5+. Bring a packed lunch and your imagination. With Michelle McTernan in celebration of Roald Dahl.

Tickets £5 per day – Advance booking required.

Gweithdy cybolfa i rai 5+ oed

Dewch â phecyn cinio a'ch dychymyg.

Os gwnaethoch chi fwynhau'r BFG dewch i ddathlu 100 mlynedd ers geni Roald Dahl.

ClwbWeeble

August - Sunday 21 3.30 – 4.30pm

Contact the office to register interest and receive dates of workshops.

Cysylltwch â'r swyddfa i gofrestru diddordeb a derbyn dyddiadau'r gweithdai.

£1 per child, Ages 3+ £1 y plentyn

Don't be a scaredy mouse, join Weeble & Friends at our exciting, fun classes for parents/carers & children. Music, Arts & Crafts, Story Telling, Fun & Games

Peidiwch â bod yn llygoden ofnus, ymunwch â Weeble a'i Ffrindiau yn ein dosbarthiadau cyffrous, llawn hwyl i rieni / gofalwyr a phlant bach.

Cerddoriaeth, Celf a Chrefft, Adrodd Stori, Hwyl a Gemau ar gyfer rhai 2 oed - 5 oed



PROJECTS / PROSIECTAU

POST IT: Make a poster

'Print Making for Adults'

'Gwneud Printiau i Oedolion'

September

Phone for dates

Price £3 per session Pris £3 y sesiwn

Explore screen and relief printing techniques with artist Lynne Bebb and other artists. People have used posters to communicate since the dawn of printing - funny, romantic, political, personal, informative or religious; posters can communicate anything. Have a go and make your own - no experience necessary.

All materials provided. The POST IT Workshops are organised in association with Swansea Print Workshop (SWP).

Archwilio technegau sgrin-brintio a phrintio cerfwedd gyda'r artist Lynne Bebb ac artistiaid eraill. Mae pobl wedi defnyddio posteri i gyfathrebu ers dechrau printio - mae posteri boed y rhain yn rhai doniol, rhmantus, gwleidyddol, personol, yn llawn gwybodaeth neu grefyddol, yn gallu cyfleu unrhyw beth.

Rhowch gynnig arni a gwneud un eich hun - nid oes angen profiad.

Darperir yr holl ddeunyddiau.

01639 843163
www.thewelfare.co.uk



National Theatre Live Deep Blue Sea (12A)

Thursday 1 September at 7pm

Helen McCrory (*Medea* and *The Last of the Haussmans* at the National Theatre, *Penny Dreadful*, *Peaky Blinders*) returns to the National Theatre in Terence Rattigan's devastating masterpiece, playing one of the greatest female roles in contemporary drama. Tom Burke (*War and Peace*, *The Musketeers*) also features in Carrie Cracknell's critically acclaimed new production.

A flat in Ladbroke Grove, West London. 1952.

When Hester Collyer is found by her neighbours in the aftermath of a failed suicide attempt, the story of her tempestuous affair with a former RAF pilot and the breakdown of her marriage to a High Court judge begins to emerge.

With it comes a portrait of need, loneliness and long-repressed passion. Behind the fragile veneer of post-war civility burns a brutal sense of loss and longing.

Tickets 🚩 **Tocynnau** £11

Concessions 🚩 **Consesiynau** £9



Cor Y Gyrlais

with Rhys Meirion and Cor Y Gogledd
- North Wales Rugby Choir

Saturday 10 September at 7pm
Dydd Sadwrn 10 Medi am 7pm

Côr y Gyrlais are an outstanding and successful male voice choir from the small towns and villages in the Upper Swansea valley. Singings in both Welsh and English languages, their vast repertoire and outstanding live performances have seen them strongly into their 53rd year; keeping the tradition of Welsh male voice choir singing, alive and well for the enjoyment of all.

Cadw'r traddodiad o ganu corau meibion Cymru'n fyw
ac yn iach er mwynhad pawb.

Tickets ► Tocynnau £10

01639 843163
www.thewelfare.co.uk

Torch Theatre presents Oh Hello!

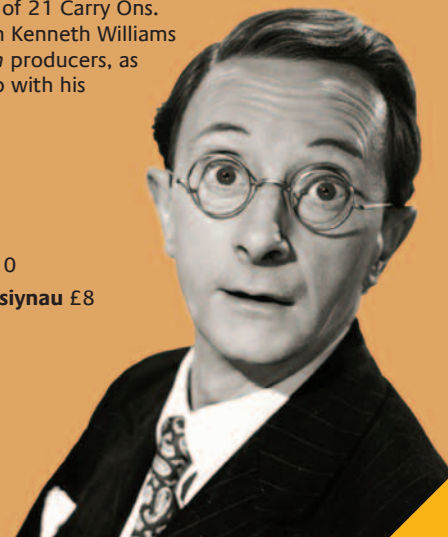
Monday 12 September at 7.30pm

Bubbly, energetic and extremely funny, Charles Hawtrey, one of the leading lights of the *Carry On* film franchise, was one of the best known comedy actors of the 40s, 50s and 60s. As his career waned when the Carry Ons fell out of favour with the great British public, so his behaviour became more drunken, promiscuous and eccentric; losing him many friends in an age when male homosexuality in Britain was illegal and punishable by a prison sentence.

See him brought to life in this one-man show as he regales stories of 50 years in the film industry working with the likes of Alfred Hitchcock and starring in films including *The Ghost of St Michael's*, *Passport to Pimlico* and a total of 21 Carry Ons. Hear of his hilarious run-ins with Kenneth Williams and his disdain of the *Carry On* producers, as well as a complex relationship with his senile mother.

Tickets ► Tocynnau £10

Concessions ► Consesiynau £8



Saeid Kordmafi

Sunday 18 September at 8pm
Dydd Sul 18 Medi am 8pm

Tickets ▶ **Tocynnau** £12
Concessions ▶ **Consesiynau** £10

Saeid Kordmafi, one of Iran's most talented musicians on Santour (hammered dulcimer) is joined by Fariborz Kiannejad on Tombak (goblet-shaped hand drum) to create a sense of time travel through the history of music of a vast civilization. The programme showcases the intricate characteristics of classical Iranian music, preserved during time by aural traditions. It will also display the interdependencies of the music of an entire region, crossing the borders and boundaries of Iran, the Arab world, Turkey, and Central Asia.

Improvisation is one of the key features of this music. Keeping in time with the present while remaining rooted in the past is a key to its survival in the modern world.

Ymunir â Saeid Kordmafi, un o gerddorion mwyaf talentog Iran ar Santour ('dulcimer' wedi'i forthwylio) gan Fariborz Kiannejad ar Tombak (drwm llaw ar ffurf gobled) i greu ymdeimlad o deithio drwy amser drwy hanes cerddoriaeth gwareiddiad enfawr. Mae'r rhaglen yn dangos nodweddion cymhleth cerddoriaeth Iranaidd glasurol, a gadwyd dros amser gan draddodiadau clywedol. Bydd hefyd yn dangos sut mae cerddoriaeth rhanbarth cyfan yn dibynnu ar ei gilydd, gan groesi ffiniau Iran, y byd Arabaidd, Twrci, a Chanol Asia.

Mae cerddoriaeth fyrfyr yn un o nodweddion allweddol y gerddoriaeth hon. Mae cadw mewn tiwn â'r presennol sy'n parhau wedi'i wreiddio yn y gorffennol yn allweddol i'w orosiad yn y byd modern.



A Glantawe Theatre Company production Those Damn Joneses

Friday 16 & Saturday 17 September at 7.30pm
Dydd Gwener 16 a Dydd Sadwrn 17 Medi am 7.30pm

Come and meet Bessie Jones in this
laugh out loud comedy by local
playwright, Winston Jenkins.

Theatr gymunedol leol ar ei gorau.



Tickets ▶ **Tocynnau** £7.50
Concessions ▶ **Consesiynau** £6.50
Family ▶ **Teulu** £24

.....



National Theatre Live The Threepenny Opera (15)

Thursday 22 September at 7pm

**National
Theatre
Live**

London scrubs up for the coronation. The thieves are on the make, the whores on the pull, the police cutting deals to keep it all out of sight. Mr and Mrs Peachum are looking forward to a bumper day in the beggary business, but their daughter didn't come home last night. Mack the Knife is back in town.

In this vivid and darkly comic new adaptation by award-winning playwright Simon Stephens' (*Port*, *The Curious Incident of the Dog in the Night-Time*) Brecht's book and lyrics meets Kurt Weill's extraordinary score.

Tickets ▶ **Tocynnau** £11
Concessions ▶ **Consesiynau** £9

.....

Royal Shakespeare Company Cymbeline

Wednesday 28 September at 7pm



An ineffectual Queen Cymbeline rules over a divided dystopian Britain. Consumed with grief at the death of two of her children, Cymbeline's judgement is clouded.

Shakespeare's rarely performed romance of power, jealousy and a journey of love and reconciliation - stunningly retold for the 21st century.

Melly Still directs Gillian Bevan in the role of Cymbeline, the first woman to take on the role for the RSC, and Bethan Cullinane as Innogen.

Tickets ▴ **Tocynnau** £12

Concessions ▴ **Consesiynau** £10

.....



Superstars of Welsh Wrestling

Friday 30 September at 7.30pm

30 Dydd Gwener Medi am 7.30pm

Come join us for an evening of glitz, glamour and bodyslam mayhem as the American Wrestling roadshow invades for one night only!

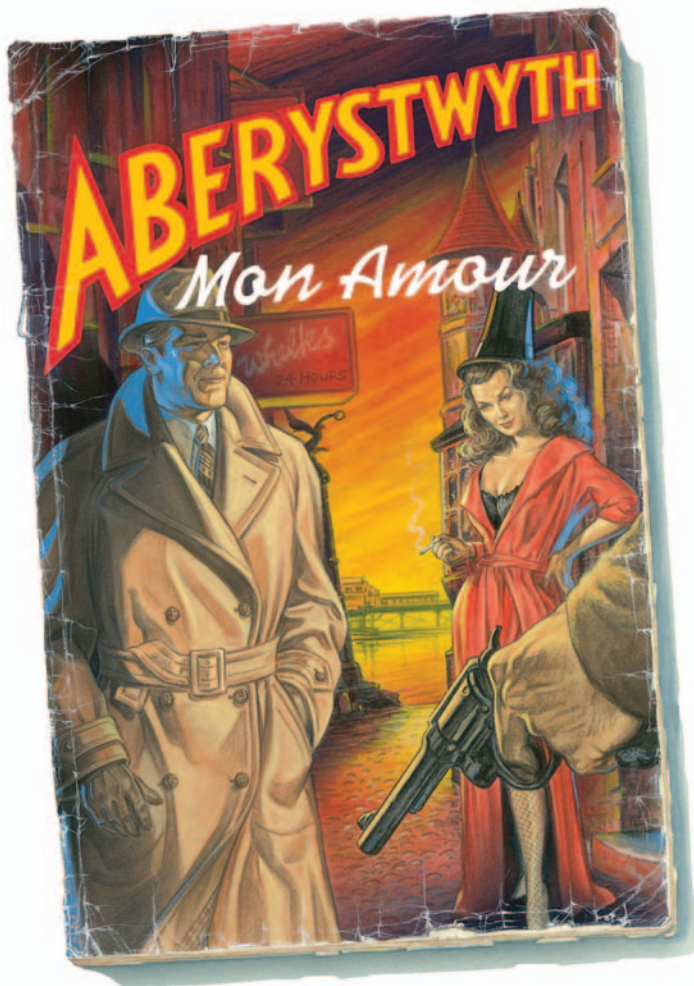
See the over the top stars of the wrestling world collide in a night of super slamming action at this fun, crazy, family, entertainment show.

Don't miss the hottest ticket in town, book now and LET'S GET READY TO RUMBLE!!!

Tickets ▴ **Tocynnau** £10 adult / i oedolion
(one child free / un plentyn am ddim)

Child ▴ **i blentyn** £7

01639 843163
www.thewelfare.co.uk



Lighthouse Theatre presents
Mae'r Lighthouse Theatre yn cyflwyno

Aberystwyth Mon Amour

Wednesday 5 October at 7.30pm
Dydd Mercher 5 Hydref am 7.30pm

A New Stage Version by Malcolm Pryce

Prepare to enter the extraordinary world of 'Welsh Noir' in this brand new stage adaptation of Malcolm Pryce's smash-hit comedy crime novel.

All over town, schoolboys are disappearing, but nobody knows why. Louie Knight, Aberystwyth's best (and only) private detective is on the case. With his side-kick Calamity Jane they begin to uncover a conspiracy that reaches as high as the Druids and as low as the Pimp and Judy circuit. It will take more than a double scoop of raspberry ripple from Sospan's ice-cream kiosk or a cone from the 24-hour wheelk stall to solve this mystery. What has it to do with the Welsh Atlantis? Where does the sadistic games teacher Herod Jenkins fit in? Just who exactly was Gwenno Guevara? And will Louie ever reconcile with the luscious Myfanwy Montez?

With its colourful cast of characters, wit and intricate plotting that will keep you guessing right up to the death-defying climax, 'Aberystwyth Mon Amour' promises an entertaining and unique night out.

Produced with the support of Arts Council Wales, The Swansea Grand and Aberystwyth Arts Centre and sponsored by Ty Cerdd and Telesgop.

Fersiwn Llwyfan Newydd gan Malcolm Pryce.

Tickets ▶ Tocynnau £11

Concessions ▶ Consesiynau £9



*"completely enamoured ... you leave
desperately wanting to be young and in
love and in Paris"* **5-star Three Weeks**

PIAF

The songs

Saturday 8 October at 8pm
Dydd Sadwrn 8 Hydref am 8pm

Eve Louseau sings the songs of Edith Piaf

One of the most enduring voices of the 20th Century, brought to life with passion and delicate energy by singer Eve Louseau.

Edith Piaf was widely regarded as France's national singer, adored both at home and abroad. Her life is the stuff of legend, from her dramatic rise from Paris street urchin to star of international renown; it was anything but *'La vie en rose'*.

Featuring all of Piaf's best-loved songs.

Eve Louseau yn canu caneuon Edith Piaf

Un o leisiau mwyaf annwyl yr 20fed Ganrif, yn dod yn fyw drwy angerdd ac ynni bregus y gantores Eve Louseau.

Ystyriwyd Edith Piaf yn eang fel cantores genedlaethol Ffrainc, yn cael ei hedmygu yn ei mamwlad a thramor. Roedd ei bywyd yn enghraifft o wir chwedl, o'i datblygiad anhygoel o stryd syml ym Mharis i fod yn enwog yn fyd-eang; roedd hyn ymhell o fod yn *'La vie en rose'*.

Gan gynnwys holl ganeuon mwyaf poblogaidd Piaf.

Tickets ▶ **Tocynnau** £14

Concessions ▶ **Consesiynau** £11

01639 843163
www.thewelfare.co.uk



A Little Angel Theatre Production **We're Going on a Bear Hunt**



Thursday 13 and Friday 14 October
at 10am, 1pm & 6pm (both days)

Based on the book by Michael Rosen and illustrated by
Helen Oxenbury, published by Walker Books Ltd.

We're going on a bear hunt.

We're going to catch a big one.

What a beautiful day!

We're not scared.

A family go on an expedition of a lifetime – running down the grassy bank, wading through the cold river, squelching over the oozy mud, stumbling into the dark forest, then peering into a cave... what will they find?

Little Angel Theatre brings Michael Rosen's thrilling and funny adventure to life in this entrancing puppetry production directed by Peter Glanville and with music and lyrics by renowned singer-songwriter Barb Jungr. This superb production is sold out for its latest 3-month London run; catch it at the Welfare whilst you can – this is the stuff that memories are made of! Suitable for children aged 2-7 years and their families.

Tickets 📌 **Tocynnau** £7

Concessions 📌 **Consesiynau** £6.50



Royal Shakespeare Company King Lear

Sunday 16 October at 7pm

King Lear has ruled for many years. As age begins to overtake him, he decides to divide his kingdom amongst his children, living out his days without the burden of power.

Following his performance as Willy Loman in Arthur Miller's great 20th century American tragedy *Death of a Salesman*, Antony Sher returns to play King Lear, one of the greatest parts written by Shakespeare. The production is directed by Artistic Director Gregory Doran.

Tickets ▲ Tocynnau £12

Concessions ▲ Consesiynau £10

Two

Thursday 20 October at 7.30pm

It's An Act present the comedy drama *Two* by Jim Cartwright, set here in a working class pub in the South Wales valleys. The play has fourteen characters in total played by just the two actors of the title. The play centres around an action packed night in a pub, the range of different customers who frequent the bar and the relationship between them.

Its main characters, the Landlord and Landlady, interlace a variety of characters each affected by another specific character. At extremes with each other; he the hands on money-in-till manager, she the gossip heart of the bar, their façade ultimately cracks when a young boy in search of his missing dad appears and they are forced to face the loss of their child years before.

Throughout the play you will meet a range of different characters that change the pace of the play, taking you on a rollercoaster ride of emotional highs and lows.

Two opened at the Young Vic London in November 1990 to rave reviews, before quickly becoming a modern drama classic. An unforgettable night of theatre from one of the UK's finest modern dramatists.

Tickets ▲ Tocynnau £9

Concessions ▲ Consesiynau £7





*"Adults and Children
alike will be delighted."*
EDINBURGH SPOTLIGHT

Captain Flinn and the Pirate Dinosaurs 2: The Magic Cutlass

Thursday 3 November at 10am & 1pm

Flinn is back! Les Petits Theatre Company return to the high seas after their hugely successful and award-winning show Captain Flinn and the Pirate Dinosaurs.

The Magic Cutlass is the hugely anticipated sequel, based on the book by Giles Andreae and Russell Ayto.

When Flinn is in the middle of his school play his old nemesis, Mr T the T-Rex, appears and kidnaps his friends forcing them to hunt for the Magic Cutlass; a sword that grants any wish! The children are whisked away for another fantastic adventure to a world of devious dinosaurs, deep sea dangers and smelly sausages! Direct from the Edinburgh Festival Fringe.

Praise for Captain Flinn and the Pirate Dinosaurs:

Winner of The Primary Times Children's Choice Award

Tickets ▲ **Tocynnau** £6

The Sherman Theatre presents: The Emperor's New Clothes

Friday 18 November at 6pm

Made especially for 3 - 6 year olds and their families
Have you ever lost something? A toy? A tooth? A memory?
What if, one day, you lost all of your 'silly'?

When the Emperor demands the coolest clothes to help him be, well, 'cool'... The call is answered by a pair of wily Weavers, who concoct a cunning plan and land everyone in an embarrassing situation. Who will help the Emperor rediscover his joy and silliness?

Sherman Theatre & Theatr Iolo present *The Emperor's New Clothes* / *Dillad Newydd yr Ymerawdwr* - a reimagining of the classic Hans Christian Andersen tale. Written by award-winning playwright Alun Saunders, with songs and live music, there's something here for the whole family this Christmas!

Wyt ti erioed wedi colli rhywbeth? Tegan? Dant? Atgof?

Beth petaet ti'n colli pob diferyn o wiriondeb?

Mae'r hen Ymerawdwr yn mynnu dillad mwyaf cŵl y deyrnas er mwyn cynnal ei enw da fel yr arweiniwr ffasiwn mwyaf, wel, 'cŵl'! Pan ddaw'r Gwehyddion cyfrwys i'r fei, mae eu cynllun twp yn bygwth 'dinoethi' un o gyfrinachau mwyaf trist y dyn mawr.

Cyflwyno Sherman Cymru a Theatr Iolo Dillad Newydd yr Ymerawdwr / *The Emperor's New Clothes* - dehongliad newydd sbon Alun Saunders o glasur Hans Christian Andersen. Gyda chaneuon a cherddoriaeth fyw, mae 'na rywbeth yma i'r holl deulu y Nadolig hwn.

Tickets ▶ **Tocynnau** £6

Family (minimum of 4 persons) £5 each ▶ **Teilu (lleuswm o 4)** £5 yr un



Lighthouse Theatre presents
Shirley Valentine
by Willy Russell

Thursday 24 November at 7.30pm

Willy Russell's hilariously engaging play was a hit in London and New York, performed by Pauline Collins, who later reprised her role on film winning an Oscar nomination.

An ordinary British housewife, as Shirley prepares chips and egg for dinner, she ruminates on her life and tells the wall about her husband, her children, her past, and an invitation from a girlfriend to join her on holiday in Greece to search for romance and adventure. An invitation that could change her life forever.

This production is produced with the help of the Swansea Grand Theatre, the Arts Council and NightOut.

Tickets ▶ **Tocynnau** £10

Concessions ▶ **Consesiynau** £8

"Absolutely smashing."
The New York Post





Allan Yn Y Fan

Saturday 26 November at 8pm

Celebrating their 20th anniversary, this multi-instrumental and vocal sextet, undertake their first tour of Wales since 2012, in support of their brand new album NEWiD.

Renowned for their infectious, live performances they effortlessly switch between spirited new versions of Welsh traditional music and their own compositions, captivating your heart and soul.

Harnessing all the power and mystery of Celtic tradition and brimming with energy, Allan Yn Y Fan's blend of joyous toe-tapping music and lively, light-hearted banter will delight audiences young and old.

"The band power into traditional Welsh music with joyous abandon, and they create some new exciting music too." Folk Wales

www.ayyf.co.uk

A Steam Pie/Aneurin Leisure Arts & Culture Service
co-production supported by Blackwood Miner's Institute.

Gan ddathlu eu 20fed pen-blwydd, mae'r chwechawd amlofferynnol a lleisiol yma yn cynnal eu taith gyntaf o Gymru ers 2012, i gefnogi eu halbwm newydd sbon NEWiD.

Yn enwog am eu perfformiadau byw heintus symudant yn ddiymdrech rhwng fersiynau newydd egniol o gerddoriaeth draddodiadol Gymreig a'u cyfansoddiadau eu hunain, gan swyno calon ac enaid.

Tickets ▶ **Tocynnau** £11

Concessions ▶ **Consesiynau** £9

 **THE WELFARE**
Y NEUADD LES
YSTRADGYNLAIS

The West End at Christmas

Sunday 18 December at 7pm



Stars directly from the West End are returning to Ystradgynlais for a magical evening of entertainment featuring hits from the musicals and the best of Christmas song. The talented cast have starred in many West End productions and national tours such as Les Miserables, We Will Rock you, South Pacific, Starlight Express, Phantom of The Opera, Godspell, Joseph and Cats... to name but a few!

Bydd dyddiadau ac amseroedd yn cael eu cyhoeddi ym mis Hydref. Mae'r cast talentog

wedi serennu mewn nifer o gynyrchiadau'r West End a theithiau cenedlaethol megis Les Miserables, We Will Rock you, South Pacific, Starlight Express, Phantom of The Opera, Godspell, Joseph a Cats... i enwi dim ond ychydig!

Tickets ▶ **Tocynnau** £12

Concessions ▶ **Consesiynau** £10 **Under 16's** £8

.....

Glantawe Theatre Company presents



26-29 January 2017

The Gigantic pantomime spectacular.
Written by Aled Hopton.



Royal Shakespeare Company The Tempest

Thursday 12 January at 7pm

On a distant island a man waits.

Robbed of his position, power and wealth, his enemies have left him in isolation. But this is no ordinary man, and this no ordinary island. Prospero is a magician, able to control the very elements and bend nature to his will. When a sail appears on the horizon, he reaches out across the ocean to the ship that carries the men who wronged him. Creating a vast magical storm he wrecks the ship and washes his enemies up on the shore. When they wake they find themselves lost on a fantastical island where nothing is as it seems.

In a unique partnership with Intel, we will be using today's most advanced technology in a bold reimagining of Shakespeare's magical play, creating an unforgettable theatrical experience.

Tickets ▶ **Tocynnau** £12

Concessions ▶ **Consesiynau** £10

Films Coming Soon



Finding Dory (U)

26 August – 1 September

Your favourite underwater characters return in Pixar's long-awaited sequel to their 2003 masterpiece, Finding Nemo.

Suicide Squad (15)

5 – 8 September

It feels good to be bad... Assemble a team of the world's most dangerous, incarcerated Super Villains.

The Carer (15)

Brian Cox as a reclusive older actor who forms a friendship with a young carer who longs for an acting career.

Julieta (15)

Pedro Almodóvar's Spanish drama about a mother's search for her estranged daughter.

Son of Saul (15)

October 1944, in Auschwitz-Birkenau, Saul Ausländer is a Hungarian member of the Sonderkommando, the group of Jewish prisoners isolated from the camp and forced to assist the Nazis in the machinery of large-scale extermination. While working in one of the crematoriums, Saul discovers the body of a boy he takes for his son. Saul decides to carry out an impossible task: save the child's body from the flames, find a rabbi to recite the mourner's Kaddish and offer the boy a proper burial.

Jason Bourne (15)

Matt Damon returns to his most iconic role in Jason Bourne. Paul Greengrass (The Bourne Supremacy, The Bourne Ultimatum) once again directs Damon in the next chapter of the Bourne franchise, which finds the CIA's most lethal former operative drawn out of the shadows. Damon is joined by Alicia Vikander, Vincent Cassel, Julia Stiles and Tommy Lee Jones.

Miss Peregrine's Home for Peculiar Children (PG)

Visionary director Tim Burton's latest film is based on the best-selling novel and stars Eva Green, Samuel L. Jackson, Judi Dench and Chris O'Dowd. When Jake discovers clues to a mystery that spans alternate realities and times, he uncovers a secret refuge known as Miss Peregrine's Home for Peculiar Children. As he learns about the residents and their unusual abilities, Jake realises that safety is an illusion, and danger lurks in the form of powerful, hidden enemies. Jake must figure out who is real, who can be trusted, and who he really is.

See thewelfare.co.uk for film times

Finding Dory



The Carer



Miss Peregrine's Home for Peculiar Children



Son of Saul



Jason Bourne





Private Hire Llogi Preifat

Conferences, Training, Weddings and Birthdays



With a variety of rooms offering varying capacities and facilities, The Welfare is the perfect venue for your private event.

With seven separate spaces (including the foyer for temporary displays) we will do our best to accommodate your needs – please be aware that the Herman Meeting Room is situated on the first floor and is not wheel chair accessible.

Wifi, audiovisual equipment and technical facilities are available on request. For your special events, wedding or birthdays parties a full decorating service, catering and floral services can be arranged at an additional cost.

More detailed information is now available on our website or contact the box office.

HYNT Scheme

We're delighted to announce that we are part of a new national access scheme - Hynt. Cardholders are entitled to a ticket free of charge for a personal assistant or carer. Please visit hynt.co.uk for more information.

Discover What's On

Find details of all our events online at www.thewelfare.co.uk

TO BOOK YOUR TICKETS

IN PERSON: Box office is open 9am-3pm, Monday-Friday.

BY PHONE: Book or reserve via telephone: **01639 843163**

E-mail: Tickets can be reserved by emailing the box office: boxoffice@thewelfare.co.uk

Reserved tickets are to be collected up to 7 days after booking to avoid disappointment.

ACCESSIBILITY



The whole of the ground floor is wheel chair accessible but unfortunately our meeting room (Herman Room) on the second floor is only accessible via a flight of stairs.



Audio induction loop (hearing loop) and audio description equipment are available for cinema screenings. Please ask at the box office.



If you would like to familiarise yourself with the building before attending an event please contact the box office to arrange a guided tour.

Please inform a member of staff if you have any particular requirements and we will be happy to help!

SOCIAL MEDIA



Find us on facebook www.facebook.com/welfare.ystradgynlais



and follow us on twitter [@TheWelfare1](https://twitter.com/TheWelfare1)

A large print or audio brochure is available on request.

Directions - How to find us

From the M4

Leave the M4 Junction 45 and join the A4067 North. Continue on this road for approx 15mins through 7 roundabouts, following signs for Dan-yr-Ogof Caves and Brecon. After the seventh roundabout follow the sign for Ystradgynlais and turn right. Once you reach the mini roundabout turn left and continue into town. Shortly after a zebra crossing The Welfare is situated on the left just past a bus station. You will find ample parking in front of the building.

From the Heads of the Valley Road A465

Leave the A465 at Glynneath and follow the A4109 towards Abercrave. Continue as it becomes the A4221 and when you reach the T Junction, turn left onto the A4067. After passing Abercrave you will reach two consecutive mini roundabouts, keep left, entering Penrhos. At the bottom of a long hill turn right into The Welfare.

From Mid Wales / Brecon

Join the A40 and travel west towards Sennybridge. Turn left off the A40 onto A4067 (towards Dan-yr-Ogof). Keep on this road, through Abercrave and follow the directions from above.

Cyfarwyddiadau - Sut i ddod o hyd i ni

O'r M4

Gadewch yr M4 gan ddefnyddio cyffordd 45 ac ymunwch â'r A4067 gan deithio i gyfeiriad y Gogledd. Cadwch at yr heol hon am tua 15 munud. Ewch yn syth heibio 7 chylchfan a dilynwch arwyddion Ogofau Dan-yr-Ogof ac Aberhonddu. Ar ôl y saithfed cylchfan, dilynwch yr arwydd i Ystradgynlais a throwch i'r dde. Wrth gyrraedd y cylchfan mini, trowch i'r chwith nes cyrraedd y dre. Ar ôl mynd heibio croesfan cerddwyr sebra gallwch weld y Neuadd Les ar y llaw chwith ar ôl mynd heibio'r garej. Mae digon o le i barcio yn y maes parcio sydd o flaen yr adeilad.

O Ffordd Blaenau'r Cymoedd A465

Gadewch yr A465 wrth gyrraedd Glyn-nedd a dilynwch yr A4109 i gyfeiriad Abercrâf. Parhewch i wneud hynny wrth i'r heol newid i'r A4221 ac ar ôl i chi gyrraedd y Gyffordd T, trowch i'r chwith a dilynwch yr A4067. Ar ôl mynd heibio Abercrâf, fe ddewch at ddau gylchfan mini, un ar ôl y llall. Cadwch i'r ochr chwith a chyn bo hir, fe ddewch i Benrhos. Ar waelod y tyle hir, trowch i'r dde i mewn i faes parcio'r Neuadd Les.

O Ganolbarth Cymru / Aberhonddu

Ymunwch â'r A40 a dilynwch yr heol hon i gyfeiriad y Gorllewin tan i chi gyrraedd Pontsenni. Trowch i'r chwith. Wrth wneud hynny byddwch yn gadael yr A40 ac yn ymuno â'r A4067 (i gyfeiriad Dan-yr-Ogof). Cadwch at yr heol hon ac ewch heibio Abercrâf. Yna dilynwch y cyfarwyddiadau uchod.

The Welfare SA9 1JJ



01639 843163
www.thewelfare.co.uk

Live Events | Digwyddiadau Byw

SEPTEMBER

THURSDAY 1 at 7PM
The Deep Blue Sea

SATURDAY 10 at 7PM

Cor Y Gyrlais

MONDAY 12 at 7.30PM
Torch Theatre presents

Oh Hello!

FRIDAY 16 & SATURDAY 17
at 7.30PM

Those Damn Joneses

SUNDAY 18 at 8PM

Saeid Kordmafi

THURSDAY 22 at 7PM
National Theatre Live

The Threepenny Opera

WEDNESDAY 28 at 7PM

Royal Shakespeare Company
Cymbeline

FRIDAY 30 at 7.30PM

Superstars of Welsh Wrestling

OCTOBER

WEDNESDAY 5 at 7.30PM
Lighthouse Theatre presents

Aberystwyth Mon Amour

SATURDAY 8 at 8PM

PIAF: The Songs

THURSDAY 13 & FRIDAY 14
at 10AM, 1PM & 6PM
A Little Angel Theatre Production

We're Going on a Bear Hunt

SUNDAY 16 at 7PM
Royal Shakespeare Company

King Lear

THURSDAY 20 at 7.30PM

Two

NOVEMBER

THURSDAY 3 at 10AM & 1PM
Captain Flinn and the Pirate Dinosaurs 2

The Magic Cutlass

FRIDAY 18 at 6PM
The Sherman Theatre presents

The Emperor's New Clothes

THURSDAY 24 at 7.30PM
Lighthouse Theatre presents

Shirley Valentine

SATURDAY 26 at 8PM

Allan Yn Y Fan

DECEMBER

SUNDAY 18 at 7PM

The West End at Christmas

JANUARY

THURS 26 - SUN 29 2017

Glantawe Theatre Company presents

Jack & The Beanstalk

THURSDAY 12 at 7PM
Royal Shakespeare Company

The Tempest



To book tickets call the Box Office on **01639 843163**.

Outside Box Office hours reserve your tickets by

emailing us on **boxoffice@thewelfare.co.uk** or by leaving a phone message.

Box Office opening hours
Monday to Friday 10am - 3pm
For full details visit our website at
www.thewelfare.co.uk

Oriau agor y Swyddfa Docynnau
Dydd Llun i Ddydd Gwener 10yb - 3yh
Manylion llawn ar ein gwefan www.thewelfare.co.uk

All details correct at time of going to press.
We reserve the right to change the programme due to circumstances beyond our control.

Mae'r holl fanylion yn gywir ar yr adeg pan fo'r rhaglen yn mynd i'r wasg. Rydym yn cadw'r hawl i newid y rhaglen oherwydd amgylchiadau y tu hwnt i'n rheolaeth.

Registered Charity
Number: 1054054



Cyngor Celfyddydau Cymru
Arts Council of Wales



Nodir gan
Lywodraeth Cymru
Sponsored by
Welsh Government



Supported by
The National Lottery
through the Welsh Council of Wales

Cefnogydd gan

Y Loteri Genedlaethol
The National Lottery