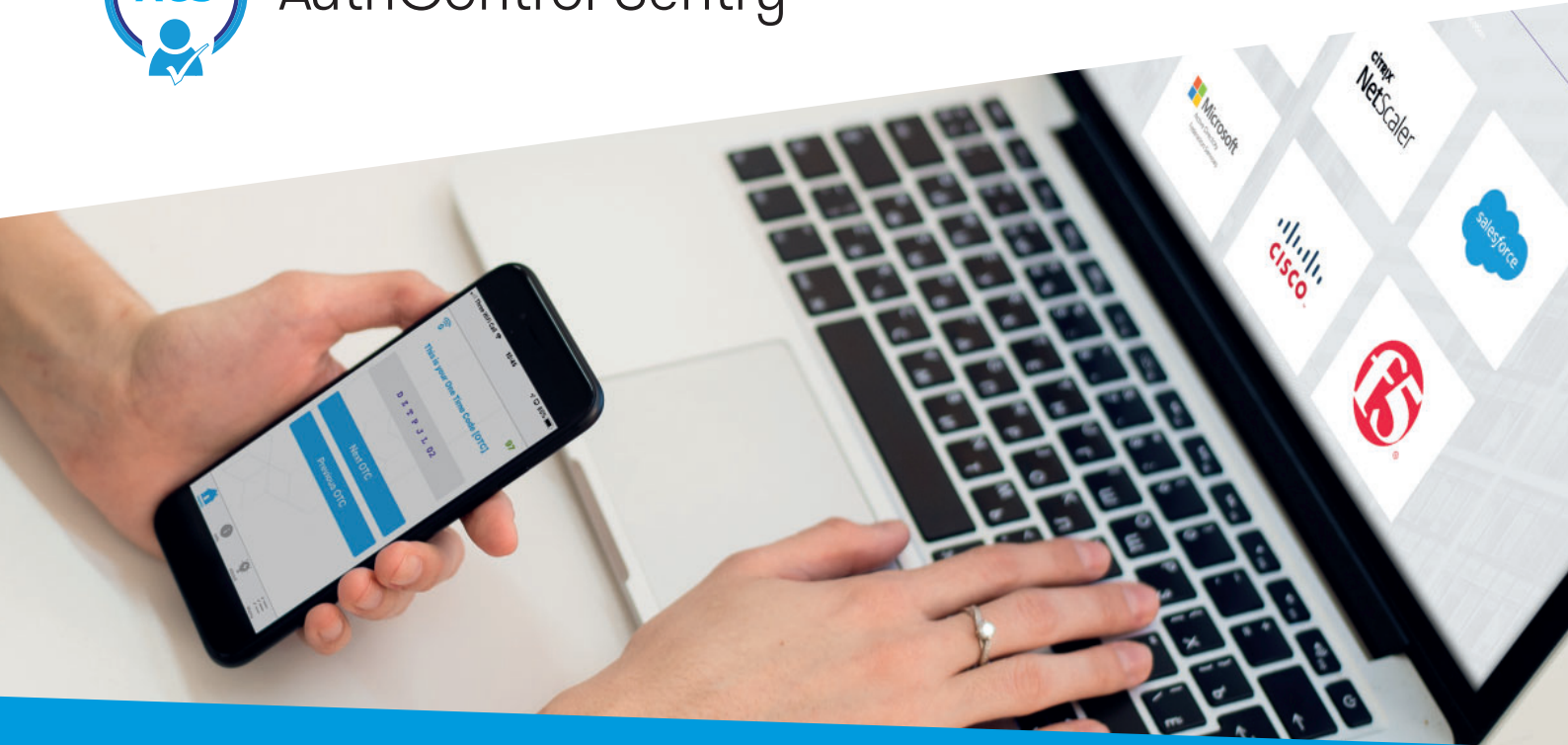




# AuthControl Sentry®



## Protecting identities with intelligent authentication

With PINsafe® technology at the core for ultimate security and risk-based authentication providing dynamic control, the award winning AuthControl Sentry® delivers an intelligent multi-factor authentication solution for all stakeholders including employees, suppliers and customers.

Deployed in over 52 countries and implemented in enterprises including finance, government, healthcare, education, and manufacturing, AuthControl Sentry® provides organisations with true multi-factor authentication.

What makes AuthControl Sentry® different

- ✓ Patented PINsafe® technology for ultimate security
- ✓ Supports on-premise and cloud for all architecture
- ✓ A single tenancy and single tiered cloud solution, ensures optimised customisation and control
- ✓ Risk-based authentication and single sign-on as standard
- ✓ Integrates seamlessly with hundreds of applications
- ✓ Ensures maximum adoption with an extensive range of authentication methods - up to ten factors!

Factors

# AuthControl Mobile®:

AuthControl Mobile® provides users with three methods of authenticating including:

- One-time code
- PUSH notification
- OATH soft token

SMS using PINsafe® technology is also available.

Factors

# Biometrics: fingerprint

Fingerprint recognition is available for AuthControl Desktop® Provider using the Windows 10 biometric framework and the NITGEN fingerprint access controller. Users can authenticate using the NITGEN fingerprint controller or their laptop.

Factors

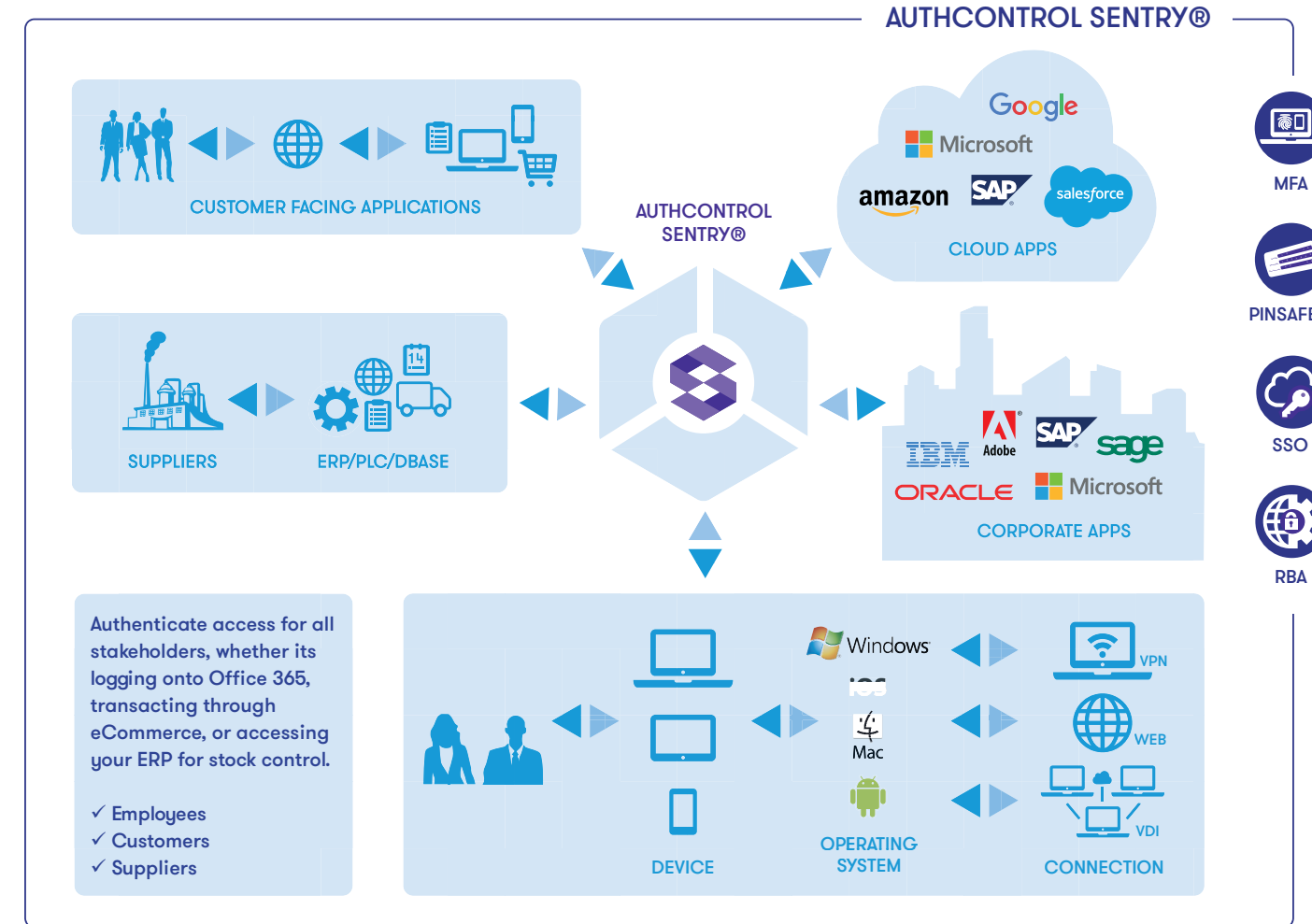
# AuthControl Voice

By calling the user, AuthControl Voice vocalises either a one-time code (OTC) or a PUSH notification (YES or NO) to authenticate access to applications. The OTC delivered vocally over the telephone is then typed into the window upon request.

Features

# AuthControl Sentry® key features

AuthControl Sentry® delivers key features which are designed to drive efficiency through your business without compromising on security:



Factors

# Image factor: PICpad

PICpad is an authentication factor that transcends the usual options for language diversification of both employees and customers. Using the same principles as PINpad®, PICpad displays symbols instead of numbers, providing a coherent meaning in multi-national environments.

Factors

# Image factor: PINpad®

A 10-digit code is presented in the form of a number grid in the user's web browser. The user then simply clicks on the numbers that represent their PIN. Each image clicked then transmits a different OTC code to AuthControl Sentry® to authenticate the user.

Technology

# PINsafe® technology

Is the patented technology behind the image authentication factors PINpad®, PICpad and TURING, part of the range of authentication factors available with AuthControl Sentry®.



Factors

# Hardware Token

The hardware token provides users with a one-time code (OTC) so they can securely access their application. Every time the button on the hardware token is pressed, it provides a new code, ensuring unauthorised access is prevented.

Factors

# TURING

A 10-digit code is presented in the form of a rectangular image in the user's web browser. The user then takes from it the numbers represented by their password. Example: If their password is 1370, then they simply take the 1st, 3rd, 7th, and 10th character from the presented image.

## Features



### Single sign-on:

Single sign-on (SSO) is designed to increase efficiency by allowing users to access all of their applications with a single successful authentication, through the risk-based policy engine.

## Features



### Risk-based authentication

Risk-based authentication - is a dynamic feature of AuthControl Sentry®, designed to automatically request the appropriate level of authentication to access applications, configured on a wide range of parameters from GeolP to Device requesting access.

## Features



### User Portal

Where users can change / reset their PIN and provision the mobile app. Helps to save on overheads by providing users with autonomy.

## Licensing

### User Licensing

Flexible licensing plans and pricing models suitable for all organisations.

- Licenses for AuthControl Sentry® are per user
- Each license is inclusive of ALL authentication factors
- MFA, SSO & RBA are including in AuthControl Sentry®
- Available as 1, 3, 5 or 7 year contracts with perpetual terms

## Service & Support

### Entry Level Maintenance Agreement

Support hours: 9am-5pm, access to software upgrades, updates and bug fixes.

### Standard Maintenance Agreement

Support hours: 24/5, Swivel Secure offers 24hr support during working days as standard.

### Premium Maintenance Agreement

Support hours: A true 24/7 service, ideal for enterprise organisations requiring expert support immediately.

### Professional Services

Swivel Secure provides a range of Professional Services for organisations requiring additional or bespoke technical resources when deploying multi-factor authentication and ensuring compatibility with systems, connections and hardware.

Search our approved partners

