



Test Report No. F690101/LF-CTSAYAA13-30251

Issued Date: 2013. 07. 01 Page 1 of 4

To: **LG HAUSYS CO., LTD.**
388,Mangyang-ri
Onyang-eup
Ulju-gun
Ulsan
Korea

The following merchandise was submitted and identified by the client as :

SGS File No. : AYAA13-30251
Product Name : Interior Film
Item No./Part No. : 130617 FW581
Received Date : 2013. 06. 25
Test Period : 2013. 06. 26 to 2013. 07. 01
Test Results : For further details, please refer to following page(s)
Test Performed : SGS Korea tested the sample(s) selected by applicant with following results.

Timothy Jeon
Jinhee Kim
Cindy Park
Jerry Jung/ Testing Person

SGS Korea Co., Ltd.

Jeff Jang / Chemical Lab Mgr



Test Report No. F690101/LF-CTSAYAA13-30251

Issued Date: 2013. 07. 01 Page 2 of 4

Sample No. : AYAA13-30251.001

Sample Description : Interior Film

Item No./Part No. : 130617 FW581

Materials : PVC with Adhesive

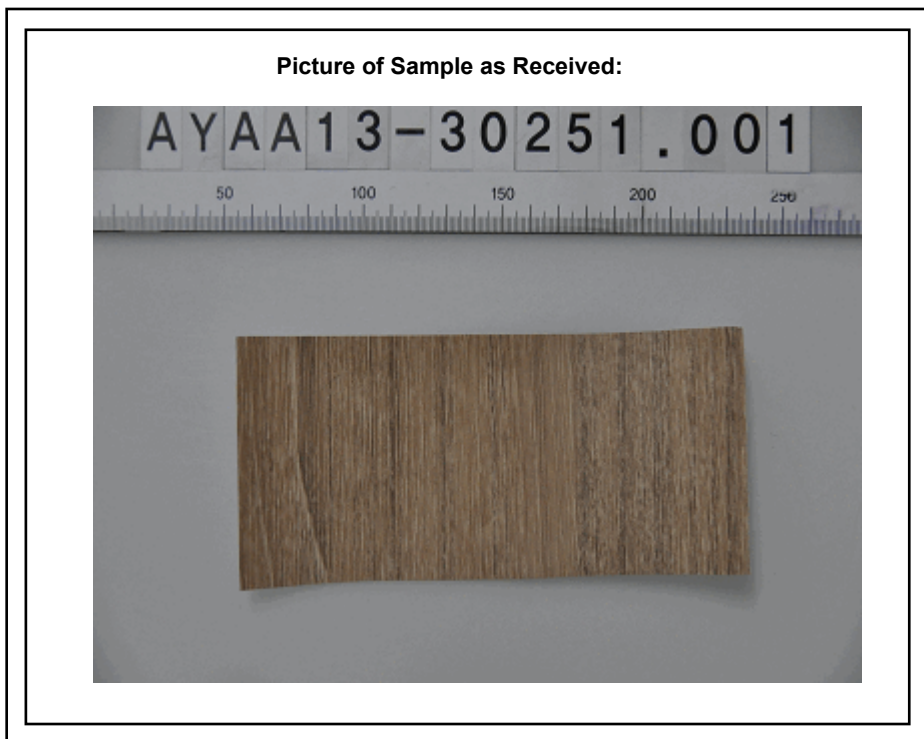
Phthalates

Test Items	Unit	Test Method	MDL	Results
Di-(2-ethylhexyl) phthalate (DEHP)	mg/kg	With reference to EPA 8061A , GC/MS	50	N.D.
Dibutyl phthalate (DBP)	mg/kg	With reference to EPA 8061A , GC/MS	50	N.D.
Benzyl butyl phthalate (BBP)	mg/kg	With reference to EPA 8061A , GC/MS	50	N.D.
Di-isodecyl phthalate (DIDP)	mg/kg	With reference to EPA 8061A , GC/MS	50	N.D.
Di-isononyl phthalate (DINP)	mg/kg	With reference to EPA 8061A , GC/MS	50	N.D.
Di-n-octyl phthalate (DNOP)	mg/kg	With reference to EPA 8061A , GC/MS	50	N.D.
Di-ethyl phthalate(DEP)	mg/kg	With reference to EPA 8061A , GC/MS	50	N.D.
Di-methyl phthalate (DMP)	mg/kg	With reference to EPA 8061A , GC/MS	50	N.D.
Di-isobutyl phthalate (DIBP)	mg/kg	With reference to EPA 8061A , GC/MS	50	N.D.
Di-isooctyl phthalate (DIOP)	mg/kg	With reference to EPA 8061A , GC/MS	50	N.D.
Di-propyl phthalate(DPrP)	mg/kg	With reference to EPA 8061A , GC/MS	50	N.D.
Di-cyclohexyl phthalate (DCHP)	mg/kg	With reference to EPA 8061A , GC/MS	50	N.D.
Di-pentyl phthalate(DPP)	mg/kg	With reference to EPA 8061A , GC/MS	50	N.D.
Di-n-hexyl phthalate (DNHP)	mg/kg	With reference to EPA 8061A , GC/MS	50	N.D.
Di-n-nonyl phthalate (DNP)	mg/kg	With reference to EPA 8061A , GC/MS	50	N.D.

NOTE:

- (1) N.D. = Not detected.(<MDL)
- (2) mg/kg = ppm
- (3) MDL = Method Detection Limit
- (4) - = No regulation
- (5) ** = Qualitative analysis (No Unit)
- (6) Negative = Undetectable / Positive = Detectable

This document is issued by the Company subject to its General Conditions of Service printed overleaf, available on request or accessible at <http://www.sgs.com/en/Terms-and-Conditions.aspx> and, for electronic format documents, subject to Terms and Conditions for Electronic Documents at www.sgs.com/terms_e-document.htm. Attention is drawn to the limitation of liability, indemnification and jurisdiction issues defined therein. Any holder of this document is advised that information contained hereon reflects the Company's findings at the time of its intervention only and within the limits of Client's instructions, if any. The Company's sole responsibility is to its Client and this document does not exonerate parties to a transaction from exercising all their rights and obligations under the transaction documents. This document cannot be reproduced except in full, without prior written approval of the Company. Any unauthorized alteration, forgery or falsification of the content or appearance of this document is unlawful and offenders may be prosecuted to the fullest extent of the law. Unless otherwise stated the results shown in this test report refer only to the sample(s) tested and such sample(s) are retained for 90 days only.

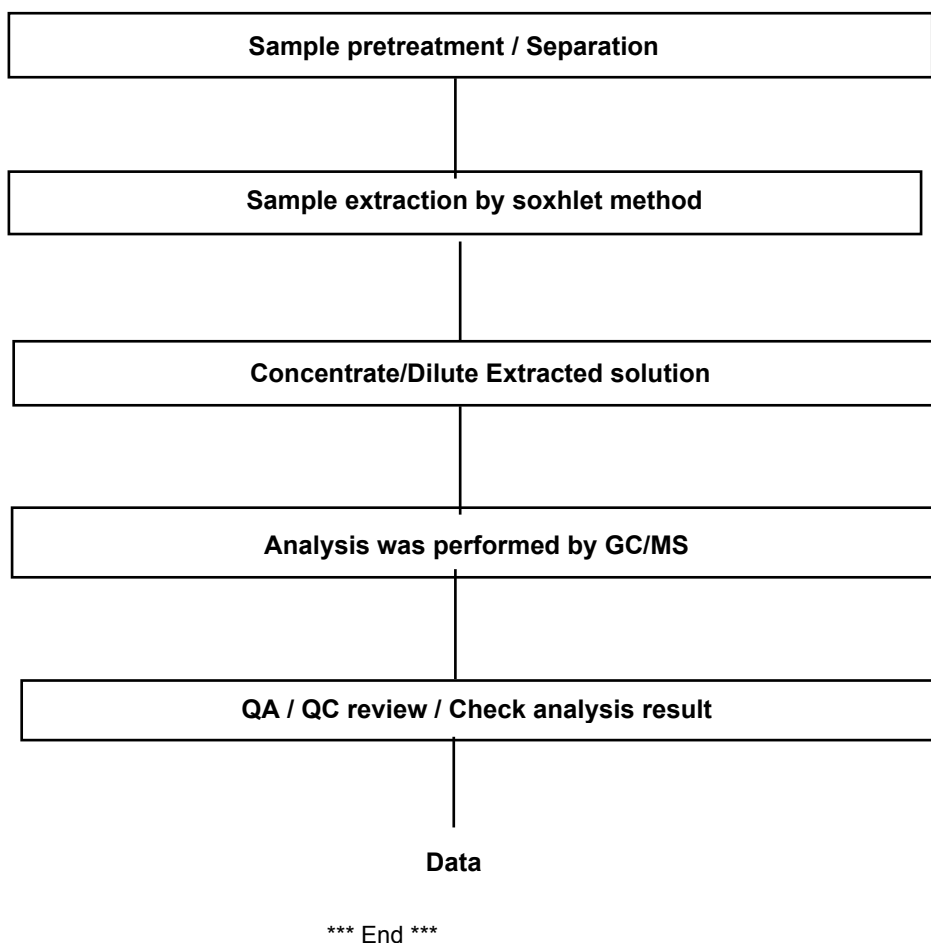


NOTE:

- (1) N.D. = Not detected.(<MDL)
- (2) mg/kg = ppm
- (3) MDL = Method Detection Limit
- (4) - = No regulation
- (5) ** = Qualitative analysis (No Unit)
- (6) Negative = Undetectable / Positive = Detectable



Flow Chart for Phthalate Test



NOTE:

- (1) N.D. = Not detected.(<MDL)
- (2) mg/kg = ppm
- (3) MDL = Method Detection Limit
- (4) - = No regulation
- (5) ** = Qualitative analysis (No Unit)
- (6) Negative = Undetectable / Positive = Detectable