

---

COMPACT SCREEN    HIGH CAPACITY SCREEN

# ABOUT FILTERSAFE®

With over three decades experience in automatic filtration of water, Filtersafe filters are equipped not only with the technology but also the knowhow to integrate successfully into water industrial applications.

Filtersafe, being the premier supplier of seawater filters for the Ballast Water Treatment market worldwide, demonstrates our products capabilities to deal with even the most averse filtration conditions.

- **Oil & Gas Sectors**
- **Power & Energy Sector**
- **Water reclamation & Desalination**
- **Municipal Water Treatment**
- **High-end Agriculture**



## Reliable filtration down to 10 µm

Our filters tailored designs and simple modularity enable us to supply filters from 10 microns upwards, with flow rates from 50-5000m<sup>3</sup>/hr in single unit and limitless capacity in a modular configurations.

Filtersafe® brings unrivalled value, effectiveness and durability to even the most demanding filtration solutions. Our filters can effectively remove high volumes of TSS and organic matter including macro-fouling.

We are able to manufacture filtration systems in skid format, and can also supply with stand- by functionality for:

- **Water injection filtration down to 10 µm**
- **Intake water filtration**
- **Produced Water**
- **Oil & Gas pipeline flushing**
- **Protection of cartridge filters**
- **General Purpose sea water filtration**



# OUR TECHNOLOGY

Filtersafe® automatic screen filters utilize unique, patented and leading edge technologies to ensure the high performance criterion the market demands are met.

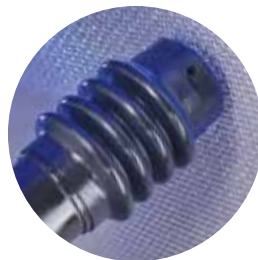
## EVERCLEAR™

automatic filtration cycle

1. SmartWeave™ screen traps organic matter & TSS
2. As sediments are trapped, pressure differential between inlet and outlet will initiate the cleaning process
3. Nozzlex™ scans the entire smartweave™ screen removing all matter, disposing of the reject water through the flushing chamber
4. Filter returns to its original parameters



**smartweave™**  
intelligent sintered screen



**nozzlex®**  
suction scanning technology



**EVERCLEAR™**  
automatic filtration cycle

### SmartWeave™ high performance filtration screens

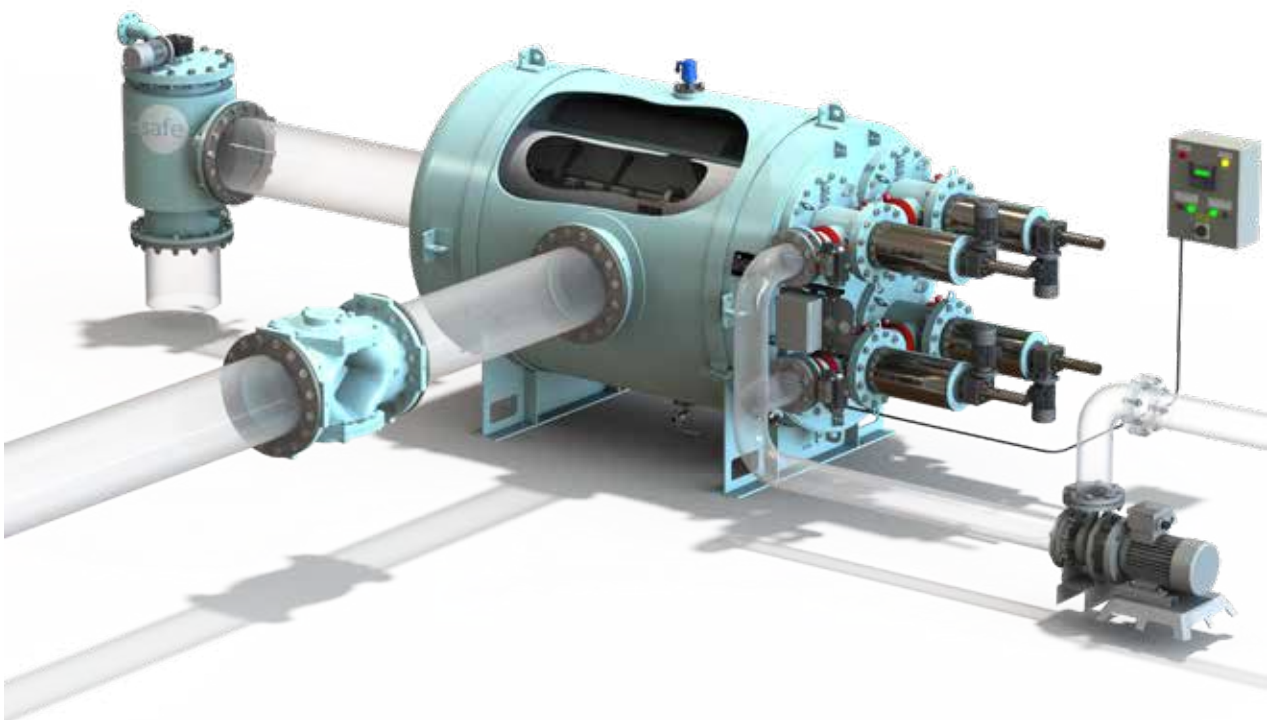
- Multi-layered sintered structure
- Enhanced strength & durability
- Available screens: 10-100 or 500 µ
- Available material: 316L, 904L

### Nozzlex™ self-cleaning cycle for maximum filter efficiency

- Improved flow rate and shorter ballasting process
- 100% screen cleaning
- Zero wear on the filter screen
- Available in *turbo™* and *superturbo™* options.

### The sum of these technologies amounts to EverClear®

- Autonomous self-cleaning filtration cycle
- Continuous robust automatic operation
- No back washing sequence
- Minimal water required for flushing
- Low operating pressure







# 01

e<sup>series</sup> | 24"

## COMPACT SCREEN AUTOMATIC FILTERS *BS, FS Series*

Model H=Horizontal V=Vertical T=Turbo ST=Super Turbo	In/Out Connections		*50 µm Screen Max. Flow rates <sup>1</sup>		*50 µm Flushing Flow rate	*40 µm Screen Max. Flow rates <sup>1</sup>		*40 µm Flushing Flow rate	*25 µm Screen Max. Flow rates <sup>2</sup>		*25 µm Flushing Flow rate
			USgpm	m <sup>3</sup> /hr	m <sup>3</sup> /hr	USgpm	m <sup>3</sup> /hr	m <sup>3</sup> /hr	USgpm	m <sup>3</sup> /hr	m <sup>3</sup> /hr
BS-101e-H/V	6-8	150-200	1,402	320	9	1095	250	8.8	657	150	8
BS-151e-H/V	8-12	200-300	2,102	480	13	1643	375	13.2	1,095	250	12
BS-201e-H/V	8-12	200-300	2,803	640	18	2190	500	17.6	1,467	335	16
<i>turbo™</i> Compact Single Screen Filters											
BS-101e-H/V-T	8-10	200-250	1,649	376	13	1,314	300	13.2	773	176	12
BS-151e-H/V-T	8-12	200-300	2,473	565	22	1,971	450	22.0	1,288	294	20
BS-201e-H/V-T	10-14	250-350	3,298	753	26	2,628	600	26.4	1,726	394	24
<i>superturbo™</i> Compact Single Screen Filters											
BS-101e-H/V-ST	8-10	200-250	1,869	427	18	1,533	350	17.6	876	200	16
BS-151e-H/V-ST	8-12	200-300	2,803	640	26	2,300	525	26.4	1,460	333	24
BS-201e-H/V-ST	10-14	250-350	3,738	853	35	3,066	700	35.2	1,956	447	32

<sup>1</sup> Min. OUTLET pressure of 1.6 bar WITH flushing pump or 2.0 bar WITHOUT flushing pump (During flushing)

<sup>2</sup> Min. OUTLET pressure of 2.0 bar WITH flushing pump or 2.4 bar WITHOUT flushing pump (During flushing)

\* Maximum flow rates at TSS loading of up to 50PPM as per IMO G8 Guidelines. When unsure of TSS loadings, we recommend to step up one filter size or consult FS.

**1,000 m<sup>3</sup>/h**  
Max. Flow Rate

**10-100 micron**  
Filtration Degree

**100%**  
Screen Cleaning

**1.6 bar (23psi)**  
Min. Operating Pressure

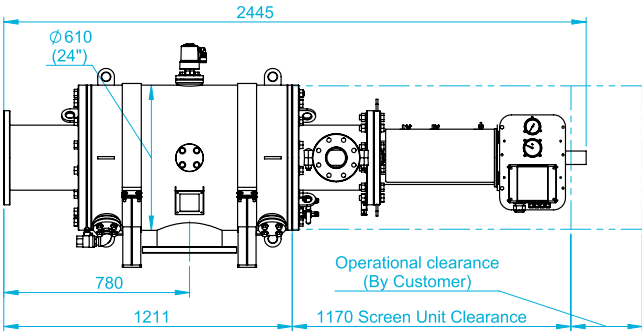
Up to **20,000 cm<sup>2</sup>**  
screen in a single  
filter

**Horizontal**  
Configuration

# COMPACT SCREEN SERIES PRODUCTS

BS/FS - 101e-H

*turbo™* *superturbo™* add-on available

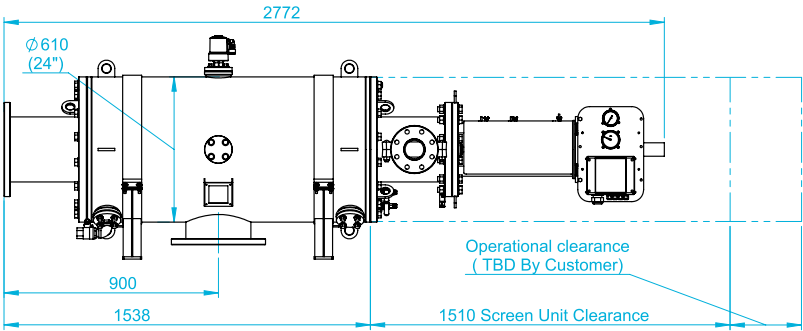


Horizontal Configuration

Dimensions Drawings, including Service Space

BS/FS - 151e-H

*turbo™* *superturbo™* add-on available

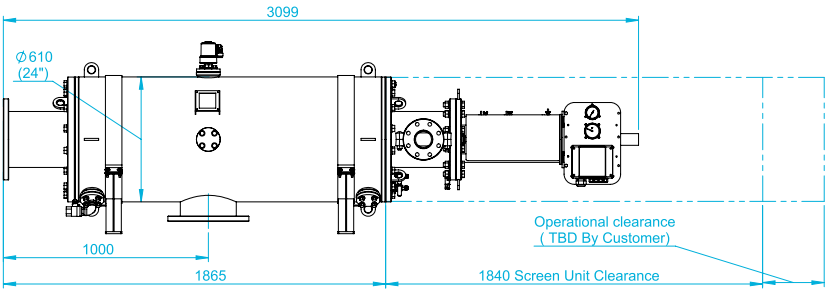


Horizontal Configuration

Dimensions Drawings, including Service Space

BS/FS - 201e-H

*turbo™* *superturbo™* add-on available



Horizontal Configuration

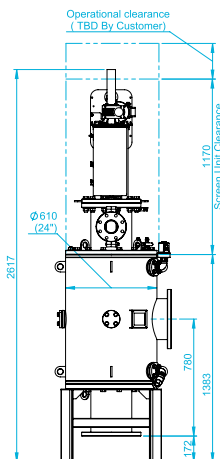
Dimensions Drawings, including Service Space

## BS/FS - 101e-V

**turbo™ superturbo™** add-on available



Vertical Configuration



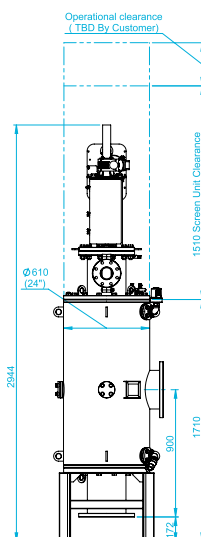
Dimension Drawings, including Service Space

## BS/FS - 151e-V

**turbo™ superturbo™** add-on available



Vertical Configuration



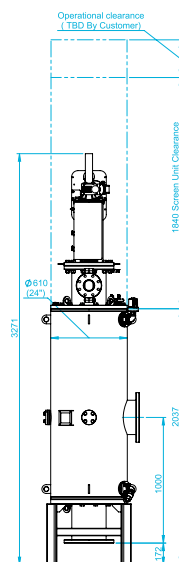
Dimension Drawings, including Service Space

## BS/FS - 201e-V

**turbo™ superturbo™** add-on available



Vertical Configuration



Dimension Drawings, including Service Space

# TECHNICAL SPECIFICATIONS

	24" Filters		
Filter Type	101e-H/V/T	151e-H/V/T	201e-H/V/T
General Data			
Screen Area	10,000cm <sup>2</sup>	15,000cm <sup>2</sup>	20,000cm <sup>2</sup>
Screen Type	FS Smartweave 4-layer Sintered Weaved Screen		
Maximum Flow Rate @ 100 µm	500m <sup>3</sup> /hr	750 m <sup>3</sup> /hr	1,000m <sup>3</sup> /hr
@ 40 µm	250	375	500
@ 25 µm	150	250	335
@ 10 µm	70	105	140
Inlet/Outlet Dia.	6" - 12" DN125 - 250	8" - 14" DN150 - 300	8" - 14" DN150 - 300
Flush Outlet Diameter	3" D80		
Design Pressure	10 bar		
Design Approvals	BV, LR, DNV-GL, ABS, CCS (*others available upon request)		
Minimum Working Pressure	1.6 Bar @ 80 µm / 2.0 Bar @40µm / 2.5 Bar @ 25 µm / 2.5 Bar @ 10 µm		
Weight (Dry)	475kg	560kg	600kg
Weight (Wet)	220kg	560kg	560kg
Flushing Data			
Design ΔP Setpoint	0.4 - 0.6 Bar		
Typ. Flush Flow @ 40 µm	15 m <sup>3</sup> /hr	22 m <sup>3</sup> /hr	22 m <sup>3</sup> /hr
Flush Cycle Duration	34 sec	34 sec	45 sec
Flush Volume per Cycle	141 ltr	207 ltr	274 ltr
Control & Electricity			
ΔP Transmitter	Analog *Digital upon request		
Electric Motor	0.18 kW		
Control Voltage	24 DC (pneumatic available upon request)		
Rated Operation Voltage	200÷480V, 3Ph@50/60Hz		
PLC Controller	Unitronics IP55		
BS / FS Series Specific Data			
		FS Series	
Design Flush Cycles per Annum		100,000	
Design Temperature		4 - 70°C	
Construction & Materials			
Pressure Vessel Housing & Lid		Carbon Steel / Stainless Steel	
Pressure Vessel Coating		Powder Coat	
Screen Type		Sintered 316L / 904L / SMO254	
Cleaning Mechanism		316L / SMO254 / POM	
Flush Valve		Marine Bronze / NR	
Seals		Viton	
Internals:		SS316/POM/PPH	
Additional Upgrades Readily Available:			
Safe Zone, EXia, Exd			
<i>turbo™</i> , David Arm			
Additional Equipment & Materials avialable upon consultation with Filtersafe representative.			

\* B = Basic, T = Turbo, ST = SuperTurbo



# 02

e<sup>series</sup> | 36"

## HIGH CAPACITY SCREEN FILTERS

### *BS, FS Series*

Model H=Horizontal V=Vertical T=Turbo ST=Super Turbo	In/Out Connections		*50 µm Screen Max. Flow rates <sup>1</sup>		*50 µm Flushing Flow rate	*40 µm Screen Max. Flow rates <sup>1</sup>		*40 µm Flushing Flow rate	*25 µm Screen Max. Flow rates <sup>2</sup>		*25 µm Flushing Flow rate
	Inch	mm	USgpm	m <sup>3</sup> /hr	m <sup>3</sup> /hr	USgpm	m <sup>3</sup> /hr	m <sup>3</sup> /hr	USgpm	m <sup>3</sup> /hr	m <sup>3</sup> /hr
BS-300e-H/V	10-14	250-350	4,205	960	18	3285	750	17.6	2,190	500	16
BS-400e-H/V	12-16	300-400	5,606	1,280	22	4380	1000	22	3,066	700	20
BS-500e-H/V	14-16	350-400	7,008	1,600	36	5,475	1,250	35.2	3,833	875	32
<i>turbo™</i> Compact Single Screen Filters											
BS-300e-H/V-T	12-16	300-400	4,947	1,129	26.4	3,942	900	26.4	2,576	588	24
BS-400e-H/V-T	12-16	300-400	6,596	1,506	35.2	5,256	1,200	35.2	3,607	824	32
BS-500e-H/V-T	14-16	350-400	8,103	1,850	52.8	6,570	1,500	52.8	4,513	1,030	48
<i>superturbo™</i> Compact Single Screen Filters											
BS-300e-H/V-ST	12-16	300-400	5,606	1,280	35.2	4,380	1,000	35.2	2,920	667	32
BS-400e-H/V-ST	12-16	300-400	7,475	1,707	44	6,132	1,400	44.0	4,088	933	40
BS-500e-H/V-ST	14-16	350-400	9,198	2,100	70.4	7,665	1,750	70.4	5,037	1,150	64

<sup>1</sup> Min. OUTLET pressure of 1.6 bar WITH flushing pump or 2.0 bar WITHOUT flushing pump (During flushing)

<sup>2</sup> Min. OUTLET pressure of 2.0 bar WITH flushing pump or 2.4 bar WITHOUT flushing pump (During flushing)

\* Maximum flow rates at TSS loading of up to 50PPM as per IMO G8 Guidelines. When unsure of TSS loadings, we recommend to step up one filter size or consult FS.

**2,000 m<sup>3</sup>/h**  
Max. Flow Rate

**10-100 micron**  
Filtration Degree

**100%**  
Screen Cleaning

**1.8 bar (26psi)**  
Min. Operating Pressure

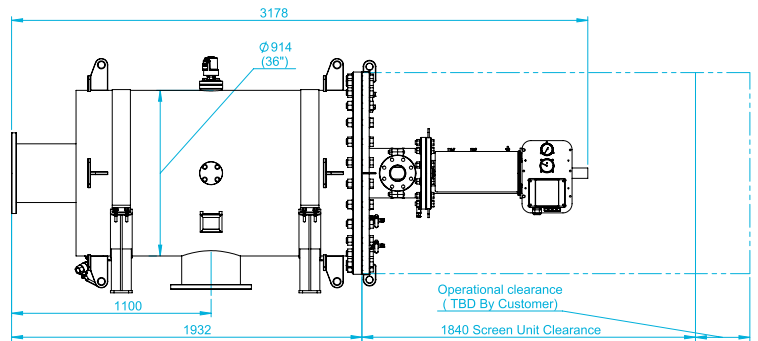
Up to **40,000 cm<sup>2</sup>**  
screen in a single  
filter

**Horizontal**  
Configuration

# HIGH CAPACITY SCREEN SERIES PRODUCTS

BS/FS - 300e-H

**turbo™ superturbo™** add-on available

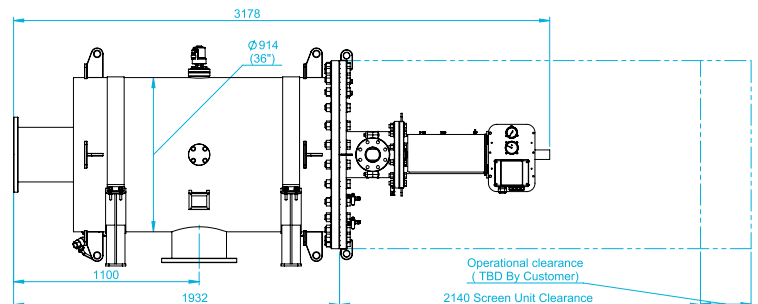


Horizontal Configuration

Dimensions Drawings, including Service Space

BS/FS - 400e-H

**turbo™ superturbo™** add-on available

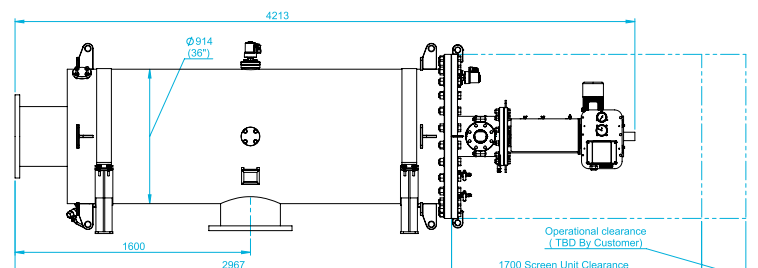


Horizontal Configuration

Dimensions Drawings, including Service Space

BS/FS - 500e-H

**turbo™ superturbo™** add-on available



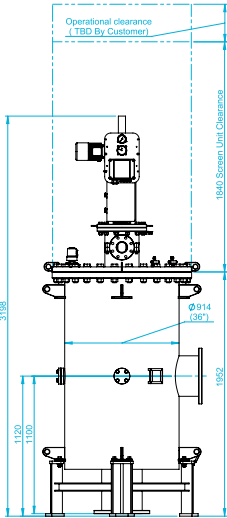
Horizontal Configuration

Dimensions Drawings, including Service Space

BS/FS - 300e-V  
*turbo™ superturbo™* add-on available



Vertical Configuration

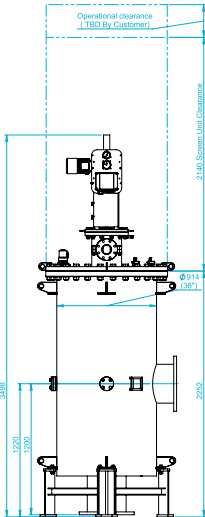


Dimension Drawings, including Service Space

BS/FS - 400e-V  
*turbo™ superturbo™* add-on available



Vertical Configuration

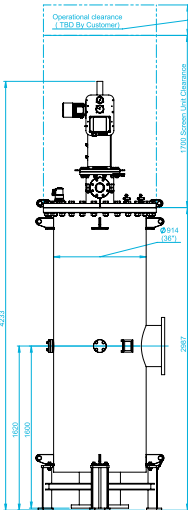


Dimension Drawings, including Service Space

BS/FS - 500e-V  
*turbo™ superturbo™* add-on available



Vertical Configuration



Dimension Drawings, including Service Space

01 02 HIGH CAPACITY 03

Filter Type	FS/BS-300e-H/V	FS/BS-400e-H/V	FS/BS-500e-H/V
General Data			
Screen Area	30,000cm <sup>2</sup>	40,000cm <sup>2</sup>	50,000cm <sup>2</sup>
Screen Type	FS Smartweave 4-layer Sintered Weaved Screen		
	B/T/ST*	B/T/ST*	B/T/ST*
Maximum Flow Rate (m <sup>3</sup> /hr) @ 100 μm	1,500/1,750/-	2,000/2,300/-	2,500/2,900/-
@ 40 μm	750/850/1,050	1,000/1,200/1,400	1,250/1,500/1,750
@ 25 μm	500/580/660	700/824/930	875/1,030/1,150
@ 10 μm	210/231/-	280/308/-	350/420/-
Inlet/Outlet Dia.	10" - 14" DN250 -350	12" - 16" DN300 - 400	12" - 18" DN300 - 450
Flush Outlet Diameter	3" DN80		
Design Pressure	8 bar		
Design Approvals	BV, LR, DNV, ABS, CCS (*others available upon request)		
Minimum Working Pressure	1.8 Bar @ 80 micron / 2.0 Bar @40 micron / 2.6 Bar @ 25 Micron / 2.6 Bar @ 10 micron		
Weight (Dry)	1255kg	1315kg	1415kg
Weight (Wet)	1060kg	1250kg	1480kg

Design ΔP Setpoint		0.4 Bar	
Typ. Flush Flow @ 40micron	24 m³/hr	30 m³/hr	35 m³/hr
Flush Cycle Duration @50Hz	102 sec	102 sec	102 sec
Flush Volume per Cycle @40 um @50Hz	0.68 m³	0.85 m³	0.99 m³

ΔP Transmitter	Analog *Digital upon request
Electric Motor	0.25 kW
Control Voltage	24 V/DC
Rated Operation Voltage	200÷480V, 3Ph@50/60Hz
PLC Controller	Unitronics IP55

	BS Series	FS Series
Design Flush Cycles per Annum	25,000	100,000
Design Temperature	4 - 50°C	4 - 70°C
Construction & Materials		
Pressure Vessel Housing & Lid	Carbon Steel	Carbon Steel / Stainless Steel
Pressure Vessel Coating	Powder Coated, Wet Paint	Powder Coated, Wet Paint
Screen Type	Sintered 316L / 904L	Sintered 316L / 904L / SMO254
Cleaning Mechanism	316L / POM	316L / SMO254 / POM
Flush Valve	SS 316/ Marine Bronze	SS 316/ Marine Bronze
Seals	Synthetic Rubber	Viton; Synthetic Rubber
Internals:	SS316/POM/PPH	SS316/POM/PPH

Safe Zone, EXia, Exd

Additional Equipment & Materials available upon consultation with Filtersafe representative.

\* B = Basic, T = Turbo, ST = SuperTurbo



# 03

e**series**

## MULTI SCREEN AUTOMATIC FILTERS

### *BS, FS Series*

Model H=Horizontal V=Vertical T=Turbo ST=Super Turbo	In/Out Connections		*50 µm Screen Max. Flow rates <sup>1</sup>		*50 µm Flushing Flow rate	*40 µm Screen Max. Flow rates <sup>1</sup>		*40 µm Flushing Flow rate	*25 µm Screen Max. Flow rates <sup>2</sup>		*25 µm Flushing Flow rate
	Inch	mm	USgpm	m³/hr	m³/hr	USgpm	m³/hr	m³/hr	USgpm	m³/hr	m³/hr
BS-603e-H/V	16-18	400-450	7,884	1,800	53	6,570	1,500	52.8	4,380	1000	48
BS-804e-H/V	18-20	450-500	10,512	2,400	70/35	8,760	2,000	70/35	6,132	1400	64/32
BS-1004e-H/V	20-24	500-600	13,140	3,000	88/44	10,950	2,500	88/44	7,665	1750	80/40
BS-1204e-H/V	20-24	500-600	15,768	3,600	106/53	13,140	3,000	106/53	9,198	2100	96/48
BS-1206e-H/V	20-24	500-600	15,768	3,600	106/53	13,140	3,000	106/53	9,198	2100	96/48
BS-1406e-H/V	20-24	500-600	18,396	4,200	132/66	15,330	3,500	132/66	10,486	2394	120/60
<b>turbo™ Multi Screen Filters</b>											
BS-603e-H/V-T	16-18	400-450	9,198	2,100	79.2	7,884	1,800	79.2	4,818	1,100	72
BS-804e-H/V-T	18-20	450-500	12,264	2,800	106/53	10,512	2,400	106/53	7,008	1,600	96/48
BS-1004e-H/V-T	20-24	500-600	15,330	3,500	141/70	13,140	3,000	141/70	8,760	2,000	128/64
BS-1204e-H/V-T	20-24	500-600	18,396	4,200	176/88	15,768	3,600	176/88	10,512	2,400	160/80
BS-1206e-H/V-T	20-24	500-600	18,396	4,200	158/79	15,768	3,600	158/79	10,512	2,400	144/72
BS-1406e-H/V-T	20-24	500-600	21,900	5,000	211/106	18,396	4,200	211/106	12,045	2,750	192/96
<b>superturbo™ Multi Screen Filters</b>											
BS-603e-H/V-ST	16-18	400-450	10,074	2,300	105.6	9,198	2,100	105.6	5,694	1,300	96
BS-804e-H/V-TS	18-20	450-500	13,140	3,000	141/70	12,264	2,800	141/70	7,884	1,800	128/64
BS-1004e-H/V-ST	20-24	500-600	16,644	3,800	176/88	15,330	3,500	176/88	9,636	2,200	160/80
BS-1204e-H/V-ST	20-24	500-600	19,710	4,500	211/106	18,396	4,200	211/106	12,045	2,750	192/96
BS-1206e-H/V-ST	20-24	500-600	19,710	4,500	211/106	18,396	4,200	211/106	12,045	2,750	192/96
BS-1406e-H/V-ST	20-24	500-600	22,776	5,200	264/132	21,462	4,900	264/132	13,140	3,000	240/120

<sup>1</sup> Min. OUTLET pressure of 1.6 bar WITH flushing pump or 2.0 bar WITHOUT flushing pump (During flushing)

<sup>2</sup> Min. OUTLET pressure of 2.0 bar WITH flushing pump or 2.4 bar WITHOUT flushing pump (During flushing)

\* Maximum flow rates at TSS loading of up to 50PPM as per IMO G8 Guidelines. When unsure of TSS loadings, we recommend to step up one filter size or consult FS.

**6,840 m³/h**  
Max. Flow Rate

**10-100 micron**  
Filtration Degree

**100%**  
Screen Cleaning

**1.8 bar (26psi)**  
Min. Operating Pressure

Up to **40,000 cm²**  
screen in a single filter

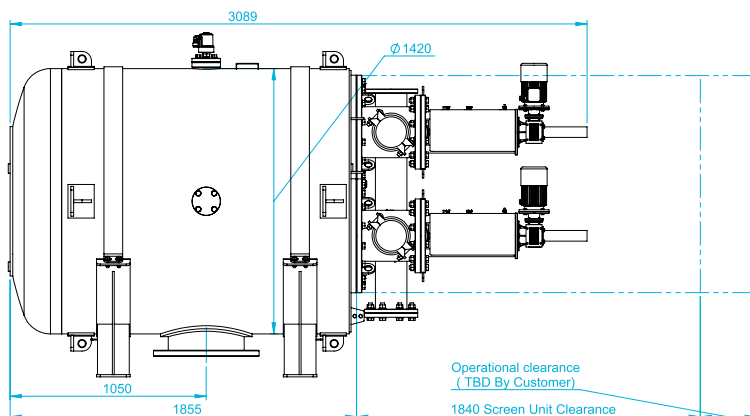
# BS/FS MULTI SCREEN SERIES PRODUCTS

BS/FS - 603e-H

*turbo™ superturbo™* add-on available



Horizontal Configuration



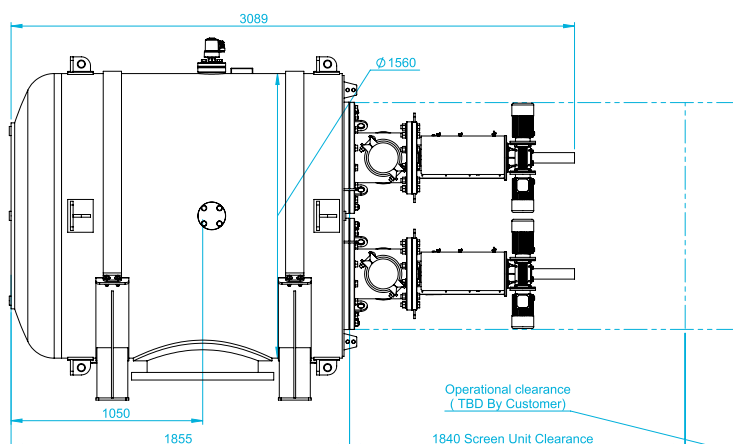
Dimensions Drawings, including Service Space

BS/FS - 804e-H

*turbo™ superturbo™* add-on available



Horizontal Configuration



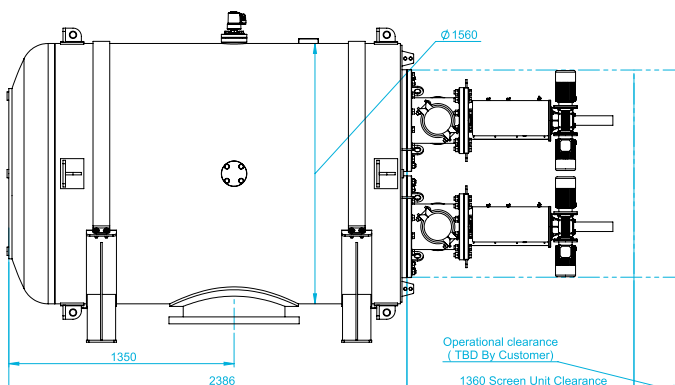
Dimensions Drawings, including Service Space

BS/FS - 1004e-H

*turbo™ superturbo™* add-on available



Horizontal Configuration



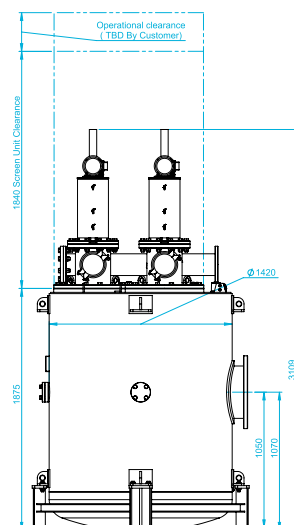
Dimensions Drawings, including Service Space

## BS/FS - 603e-V

**turbo™ superturbo™** add-on available



Vertical Configuration



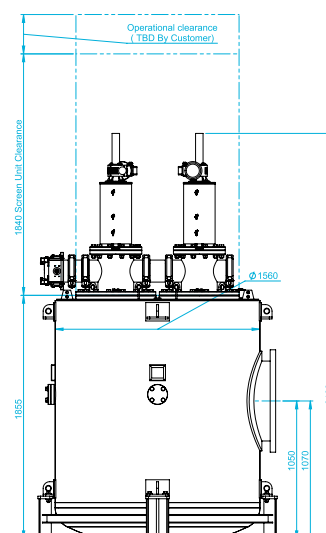
Dimension Drawings, including Service Space

## BS/FS - 804e-V

**turbo™ superturbo™** add-on available



Vertical Configuration



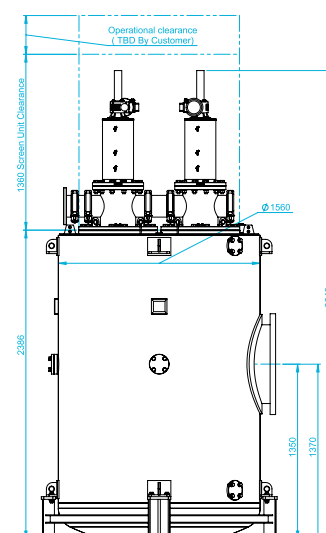
Dimension Drawings, including Service Space

## BS/FS - 1004e-V

**turbo™ superturbo™** add-on available



Vertical Configuration

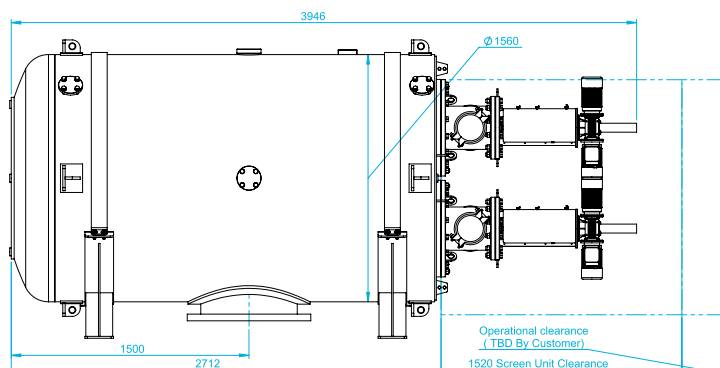


Dimension Drawings, including Service Space

# BS/FS MULTI SCREEN SERIES PRODUCTS

BS/FS - 1204e-H

**turbo™ superturbo™** add-on available

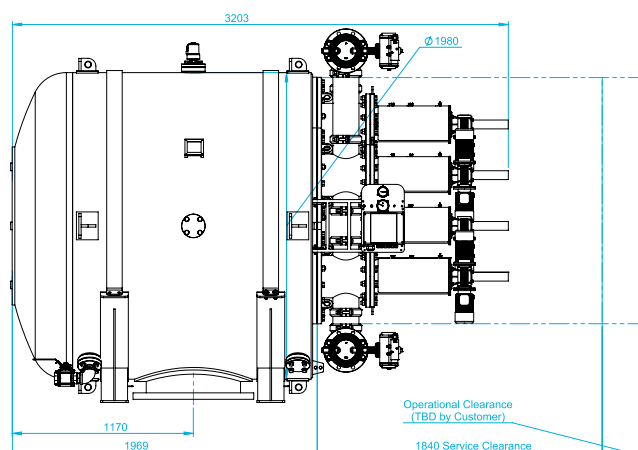


Horizontal Configuration

Dimensions Drawings, including Service Space

BS/FS - 1206e-H

**turbo™ superturbo™** add-on available

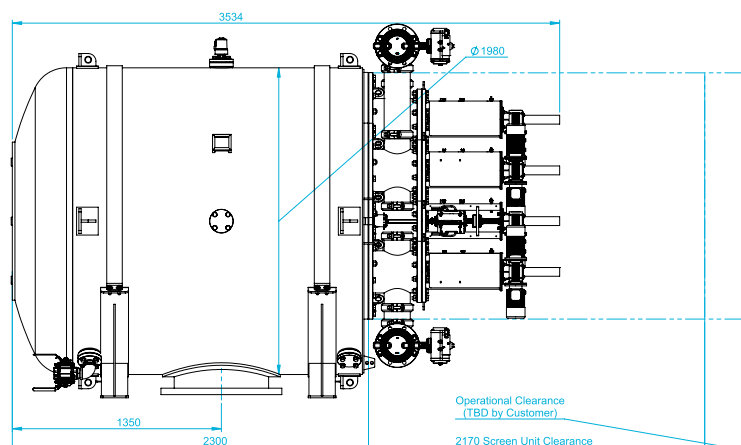


Horizontal Configuration

Dimensions Drawings, including Service Space

BS/FS - 1406e-H

**turbo™ superturbo™** add-on available



Horizontal Configuration

Dimensions Drawings, including Service Space

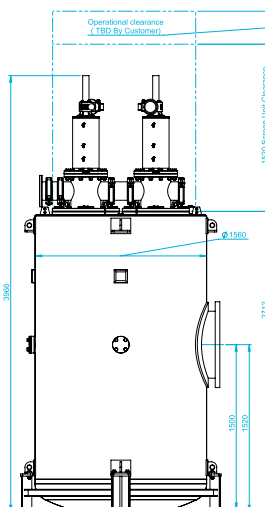


## BS/FS - 1204e-V

**turbo™ superturbo™** add-on available



Vertical Configuration



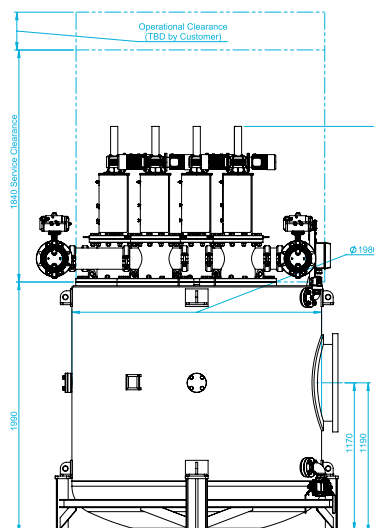
Dimension Drawings, including Service Space

## BS/FS - 1206e-V

**turbo™ superturbo™** add-on available



Vertical Configuration



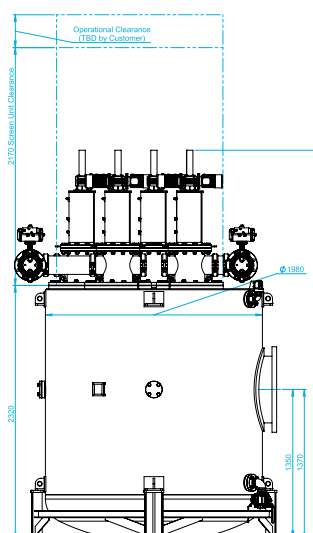
Dimension Drawings, including Service Space

## BS/FS - 1406e-V

**turbo™ superturbo™** add-on available



Vertical Configuration



Dimension Drawings, including Service Space

# TECHNICAL SPECIFICATIONS

Filter Type	BS/FS-603e-H/V	BS/FS-804e-H/V	BS/FS-1004e-H/V	BS/FS-1204e-H/V	BS/FS-1406e-H/V
General Data					
Screen Area	60,000cm <sup>2</sup>	80,000cm <sup>2</sup>	100,000cm <sup>2</sup>	120,000cm <sup>2</sup>	140,000cm <sup>2</sup>
Screen Type	FS Smartweave 4-layer Sintered Weaved Screen				
Maximum Flow Rate @ 100 micron	3,000 m <sup>3</sup> /hr	4,000 m <sup>3</sup> /hr	5,000 m <sup>3</sup> /hr	6,000 m <sup>3</sup> /hr	6,840 m <sup>3</sup> /hr
@ 40 µm	1,500	2,000	2,500	3,000	3,420
@ 25 µm	1,000	1,400	1,750	2,100	2,394
@ 10 µm	420	560	700	840	960
Inlet/Outlet Diameter	16" - 18" DN400 - 450	18" - 20" DN450 - 500	20" - 24" DN500 - 600	20" - 24" DN500 - 600	20" - 24" DN500 - 600
Flush Outlet Diameter	6" (150)	2 x 6" (150)	2 x 6" (150)	2 x 6" (150)	2 x 6" (150)
Design Pressure	6.9 bar				
Approvals	BV, LR, DNV-GL, ABS, CCS (* others available upon request)				
Minimum Working Pressure	1.8 Bar @ 80 micron / 2.0 Bar @40 micron / 2.6 Bar @ 25 Micron / 2.6 Bar @ 10 micron				
Weight (Dry)	2,896kg	3,341kg	3,745kg	3,953kg	5,084kg
Weight (Wet)	3,000kg	4,100kg	4,900kg	5,480kg	6,120kg

Flushing Data					
Design Δ P Setpoint	0.4 Bar				
Typ. Flush Flow @ 40 µ	72 m <sup>3</sup> /hr	96/48 m <sup>3</sup> /hr	120/60 m <sup>3</sup> /hr	144/72 m <sup>3</sup> /hr	180/90 m <sup>3</sup> /hr
Flush Cycle Duration @50Hz	54 sec	54 sec	54 sec	54 sec	54 sec
Flush Volume per Cycle @40 um @50Hz	1.08 m <sup>3</sup>	0.96/0.48 m <sup>3</sup>	1.2/0.6 m <sup>3</sup>	1.44/0.72 m <sup>3</sup>	1.8-0.9 m <sup>3</sup>

Control & Electricity					
Δ P Transmitter	Analog *Digital upon request				
Motor	3x0.18kW	4x0.18kW	4x0.18kW	4x0.18kW	6x0.18kW
Control Voltage	24V/ DC				
Rated Operation Voltage	200÷480V, 3Ph@50/60Hz				
PLC Controller	Unitronics IP55				

BS / FS Series Specific Data		
	BS Series	FS Series
Design Flush Cycles per Annum	25,000	100,000
Design Temperature	4 - 50°C	4 - 70°C

Construction & Materials		
Pressure Vessel Housing & Lid	Carbon Steel	Carbon Steel / Stainless Steel
Pressure Vessel Coating	Powder Coated, Wet Paint	Powder Coated, Wet Paint
Screen Type	Sintered 316L / 904L	Sintered 316L / 904L / SMO254
Cleaning Mechanism	316L / POM	316L / SMO254 / POM
Flush Valve (wetted parts)	SS 316/ Marine Bronze	SS 316/ Marine Bronze
Seals	Synthetic Rubber	Viton/Synthetic Rubber
Internals:	SS316/POM/PPH	SS316/POM/PPH

Additional Upgrades Readily Available:	
Safe Zone, EXia, Exd	
Turbo, Davit Arm	
Additional Equipment & Materials available upon consultation with Filtersafe Representative.	



# REGIONAL OFFICE, MANUFACTURING & ASSEMBLY

## ● ISRAEL

A 4,000 sq/m premises comprising our regional sales offices, R&D facilities and manufacturing/assembly plant. The facility is capable of handling very large volumes of production in line with market growth.

### **Contact Information:**

Ha'eila Street, P.O.B 23, Tefen Ind. Zone 2495900, Israel

Phone: +972 4 987 3620 ext. 105/106, Email: [sales@filtersafe.net](mailto:sales@filtersafe.net)

## ● HONG KONG

Our Hong Kong manufacturing/assembly plant supplies our entire line of products to the region and is supported by a world-class steel fabrication facility.

### **Contact Information:**

DD362 Lot 30 Tsing Chau Tsai Shipyard,

Lantau Island N T, Hong Kong

Phone: +852 2454 4300, Email: [fhongkong@filtersafe.net](mailto:fhongkong@filtersafe.net)

## ● BRAZIL, Rio de Janeiro

Branch Office

### **Contact Information:**

Cell: +55 21 98899 6890

Direct: +55 21 3798 2307

Email: [fsbrazil@filtersafe.net](mailto:fsbrazil@filtersafe.net)

## ● CHINA, Beijing

Branch Office

### **Contact Information:**

Room 811, Building 1,

Xinyuanguoji Plaza, No 1,

Chengshousi Road, Fengtai

Dist., 100078 Beijing, PRC China

Email: [fschina@filtersafe.net](mailto:fschina@filtersafe.net)

## ● GERMANY, Hamburg

Branch Office

Strategic Sales & Technical

Office serving all European markets.

### **Contact Information:**

Phone: +49 151 5111 9622

Email: [fsgermany@filtersafe.net](mailto:fsgermany@filtersafe.net)

## ● SINGAPORE

Branch Office

Strategic Sales & Technical Office

### **Contact Information:**

Singapore Water Exchange,

84 Toh Guan Road East,

#02-08, Singapore 608501

Phone: +65 9848 9856

Email: [fssingapore@filtersafe.net](mailto:fssingapore@filtersafe.net)



● Filtersafe Offices

● Filtersafe Manufacturing Facilities

● Filtersafe Distributors



[www.filtersafe.net](http://www.filtersafe.net)

Filtersafe reserves the right to change any of the information presented in this document without prior notice.

The data presented in this document is for general information only and cannot be used for quotation purposes. Please contact Filtersafe for specific quote.

