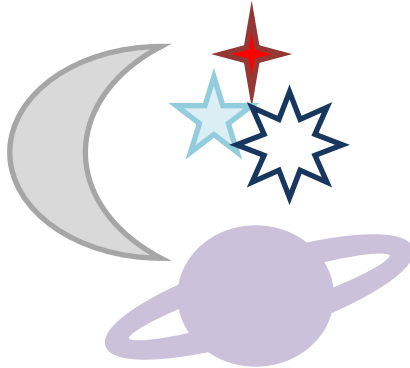
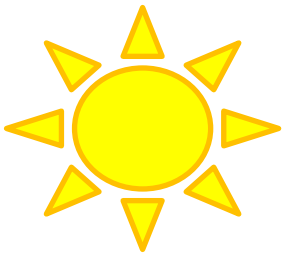




nPAE

PRECISION ASTRO ENGINEERING

Theia 90 Star Diagonal



1. Attach your Theia 90 to your telescope back or focuser with the nose, or unscrew the nose and screw the body directly onto an M48 male thread.
2. Your Theia 90 accepts most M48 threaded filters. Load your filters into the 3 filter holders and swap as you choose during viewing.
3. The nose will also accept a filter if you want to view with double filters.
4. Secure your eyepieces or cameras with the compression ring.
5. μm tip/tilt of the mirror is possible by adjusting the four screws on the back plate with the supplied allen key.
6. The 1/10th wave mirror can be cleaned with a microfibre or similar cloth by unscrewing all four rear screws and gently tilting out the mirror plate. (Tilt top towards you with the bottom still in place.)