



Kingfisher Wind farms chart

Blyth offshore wind farm
January 2020

Description

The Blyth Offshore Wind Farm is operated by E.ON. It is situated approximately 1 km from shore in the North Sea, off the North East coast of England. The wind farm is fully operational and has 2 turbines, a total capacity of 4 MW and covers an area of less than 1 km².



Emergency procedures

1. If you suspect you have snagged a subsea cable or renewable energy structure, DO NOT endanger your vessel and crew by attempting to recover your gear.
2. Carefully plot your vessel's position as accurately as possible.
3. Advise the Coastguard of your situation, and call the 24 hour Emergency Number and state that an incident is occurring concerning a subsea cable or renewable energy structure.




Reducing the risks whilst fishing

To reduce the risks of fishing near offshore structures, it is essential to be up to date with KIS-ORCA information. KIS-ORCA information is easy to install on your vessel's fishing plotter and ensures skippers are able to make informed decisions for their safety.

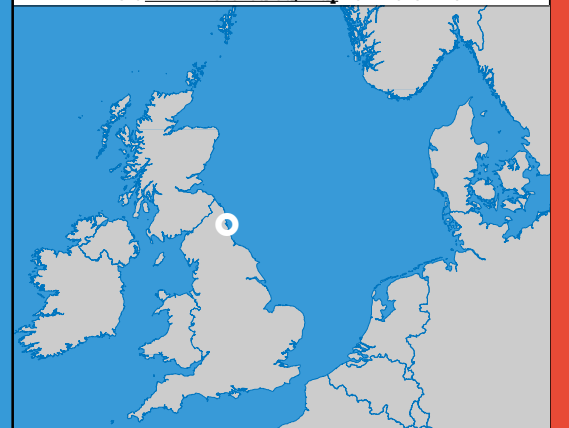
The closer to the surface a subsea cable is lifted when fouled by fishing gear, the more danger there is to the fishing vessel. In the interests of fishing safety and to prevent damage to subsea structures, fishermen are advised to exercise caution when fishing in the vicinity of subsea cables and renewable energy structures. Loss of gear, fishing time and catch can result if a trawler snags a subsea structure and there is serious risk of loss of life.

Emergency contact number +44(0)845 3014711

**Blyth
Offshore Wind Farm**

- Key**
-  Site boundary
 -  Export cable
 -  Wind turbine

Grey coloured features displayed on this chart represent additional offshore wind farm structures. Visit www.kis-orca.eu/map for more info.

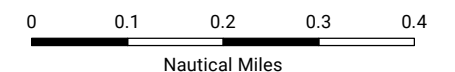


Projection: World_Mercator
Spheroid: GCS_WGS_1984
Datum: D_WGS_1984

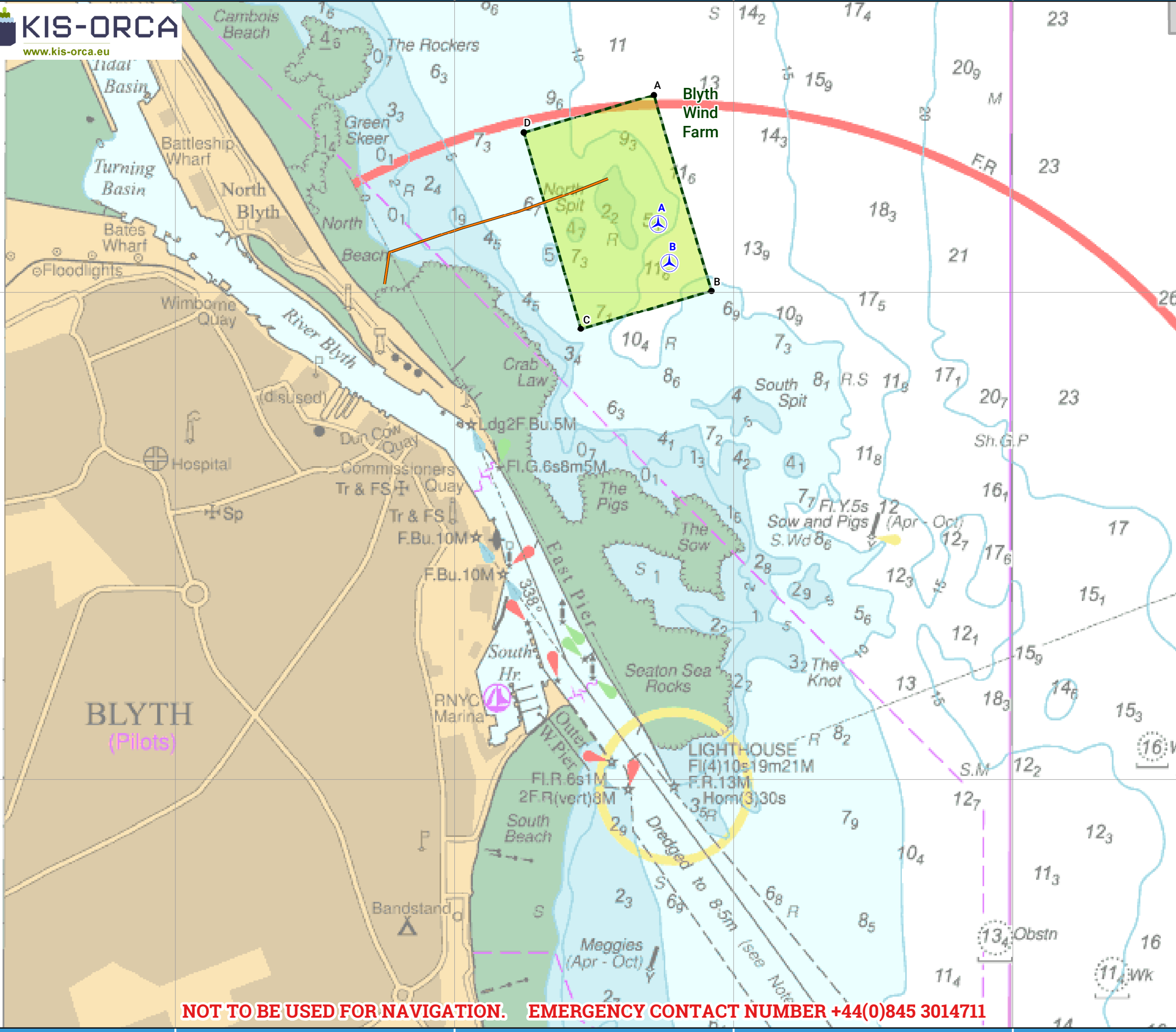
This data is issued as a guide only. Seafish, cable / structure owners and Distributors accept no responsibility for any inaccuracies however caused.

Please be aware that other structures & cables may exist in addition to those shown on this chart.

©Crown Copyright and/or database rights. Reproduced by permission of the Controller of Her Majesty's Stationery Office and the UK Hydrographic Office (www.GOV.uk/UKHO).



Scale @ A3:
1:15,000



NOT TO BE USED FOR NAVIGATION. EMERGENCY CONTACT NUMBER +44(0)845 3014711

55°8'N
55°7'N

1°31'W 1°30'W 1°29'W 1°28'W

1°31'W 1°30'W 1°29'W 1°28'W

Asset locations



Extents

A	55°08.405'N 01°29.285'W
B	55°08.003'N 01°29.079'W
C	55°07.925'N 01°29.547'W
D	55°08.328'N 01°29.751'W

Turbines

A	55°08.140'N 01°29.270'W
B	55°08.060'N 01°29.230'W



Contact us

+44 (0) 1472 252 307
kingfisher@seafish.co.uk
@kingfisherinfo
www.kingfishercharts.org

Stay up to date: Always ensure you have the latest Kingfisher Bulletin and Offshore Fishing Plotter on-board