



INNATE IMMUNITY **Complement**

Part of AbD Serotec
Innate Immunity Range

Research Areas

- Apoptosis & Cell Viability
- **Complement**
- Cytokines & Chemokines
- Pattern Recognition Receptors
- Toll-like Receptors

Cell Types

- Dendritic Cells
- Macrophages
- NK Cells & Receptors

Application specific antibodies and reagents for immunological research

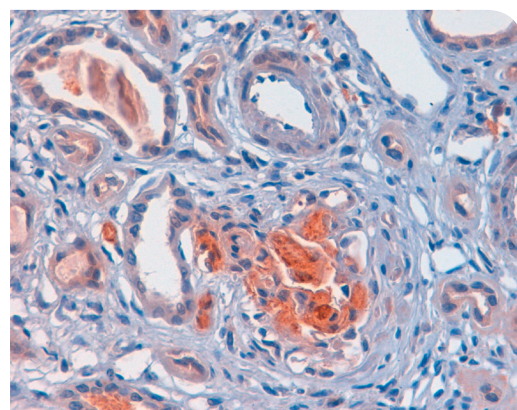
AbD Serotec offers a continually developing range of antibodies and recombinant proteins against markers of pivotal components of the complement cascade:

- Targets to the classical, alternative and the mannose binding-lectin (MBL) pathways
- Receptor and regulatory protein antibodies
- Antibodies against key targets including C4d, C1q, C3 and C-reactive protein
- Performance guarantee in key immunological applications including ELISA, Immunohistochemistry, Immunoassays, Western Blotting and Immunofluorescence

Featured Product: **Anti-human C4d antibody (0300-0230)**

C4d, a secreted complement protein, is the key indicator for the activation of the classical complement pathway and the principle biomarker of graft rejection. Rabbit anti-human C4d antibody (0300-0230) is highly recommended for the detection of C4d and tissue rejection.

Four monoclonal antibodies are also available against C4d including mouse anti-human C4d clone 10-11 (2222-8004).



Anti-human C4d (0300-0230) Immunohistochemistry staining

Formalin fixed paraffin embedded human kidney from a patient with lupus erythematosus stained with rabbit anti-human C4d (0300-0230) following sodium citrate (pH 6.0) mediated antigen retrieval. Visualized using HISTAR Detection System (STAR3000) and counterstained with haematoxylin.

Citations: 8

Applications:

Immunohistochemistry - frozen and paraffin, Immunofluorescence

Related Products:

HISTAR detection kits
(STAR3000A/B/C)

AbD Serotec offers a broad range of products for studying complement, a selection of complement markers are shown in the table below, for a full product listing go to abdserotec.com/complement

Anti-Human

| Specificity | Clone | Applications | Formats | Product Code** | Specificity | Clone | Applications | Formats | Product Code** |
|--------------|------------------------|------------------------------|--------------------------------|----------------|---------------------|-----------------|---|--|----------------|
| C1q | Polyclonal | E, FC, ID | Pur, FITC | AHP033 | CD18 | MEM-148 | FC, IP, WB | Pur, Az Fr., Biot, FITC, RPE | MCA2086 |
| C1q | Polyclonal | E | HRP | 2221-5004P | CD21 | LB21 | FC, IHC-F*, IP | Pur, FITC, RPE | MCA1195 |
| C1q | N/A | E | Antigen | 2221-5504 | CD21 | 2G9 | IHC-F, IHC-P* | S/N | MCA1808 |
| C1q | 3R9/2 | E, FC, IF/ICC, IHC-F, WB | Pur | MCA2603 | CD21 | BU32 | FC, IP | Pur, FITC | MCA2498 |
| C3a | 10-21 | E, WB | Pur | MCA2604 | CD21 | BU33 | FC | Pur | MCA2499 |
| C3a receptor | hC3aRZ1 | FC, IHC-F | Pur, A488, A647, RPE | MCA2455 | CD35 | E11 | FC, IHC-F, IHC-P*, WB | Pur, Az Fr., FITC, RPE | MCA554 |
| C3b | H11 | IHC-F, WB | Pur | 0200-0614 | CD46 | MEM-258 | FC, FN*, IF/ICC, IP, WB | Pur, A647, FITC, RPE | MCA2113 |
| C3c | 10-02A | E*, FC, IHC-F, WB | Pur | MCA2605 | CD55 | 67 | FC, IHC-F, WB | Pur, RPE | MCA1614 |
| C3d | 053A-1149.3.1.4 (1003) | E, FC, IHC-F, WB | Pur | MCA2606 | CD55 | 1G3 | WB | Az Fr. | MCA4011Z |
| C3d | 053A-514.3.1.4 | E, FC, IHC-F | Pur | MCA2648 | CD55 | BRIC216 | FC, FN*, IP, WB* | Pur | MCA914 |
| C4bp | 10-07 | E | Pur | MCA2609 | CD59 | MEM-43 | E, EM, FC, IF/ICC, IHC-F, IHC-P*, IP, WB* | Pur, A488, A647, Az Fr., Biot, FITC, RPE | MCA1054 |
| C4c | 10-12 | E*, FC, IHC-F, WB | Pur | MCA2608 | CD59 | YTH53.1 | FC, FN*, IF, IHC-F, IHC-P*, WB | Pur, FITC, RPE | MCA715 |
| C4d | 10-11 | E, IF/ICC, IHC-F, IHC-P*, WB | Pur | 2222-8004 | Clusterin | 3R3/2 | E, FC, IHC-F, WB | Pur | MCA2612 |
| C4d | TDM16 | E, IHC-P* | Pur | MCA-5766GA | Complement factor B | 10-09 | E*, FC, IHC-F, WB | Pur | MCA2613 |
| C4d | TDM37 | E, IHC-P* | Pur | MCA-5767GA | Complement factor B | 014III-33.2.4.3 | E*, FC, FN, IHC-F, WB | Pur | MCA2647 |
| C4d | Polyclonal | IF/ICC, IHC-F, IHC-P* | Pur | 0300-0230 | Complement factor B | 032B-22.1X | E, FC, WB | Pur | MCA2650 |
| C5 | 046-10.2.2 (10-04) | E, FN, WB | Pur | MCA2610 | Complement factor H | 10-10 | E, FC, IHC-F, WB | Pur | MCA2614 |
| C6 | 056B-214.2.4.2 | E, FC, IHC-F | Pur | MCA2666 | Complement factor I | 3R/8 | E, FN, IHC-F, WB | Pur | MCA2615 |
| C7 | 030-113.7.5.4 | E, FN, WB | Pur | MC2644 | Complement factor P | 10-18 | E, FN, IHC-F | Pur | MCA2617 |
| C8 | 056B-373 | E, FC, IHC-F, WB | Pur | MCA2645 | Complement factor P | 10-24 | E, IHC-F | Pur | MCA2618 |
| C9 | 002-94.8.8 | E | Pur | MCA2646 | CRIT | 4644 | E, WB | Pur | HCA031 |
| CD11c | BU15 | FC, IHC-F*, IP | Pur, A488, A647, FITC, RPE | MCA2087 | C-reactive protein | Polyclonal | E, TB | Pur | AHP1714 |
| CD18 | BU86 | FC | Pur, FITC | MCA2510 | iC3b | 013III-1.16 | E, FC, IHC-F, WB | Pur | MCA2607 |
| CD18 | YFC118.3 | FC, IHC-F*, IP | Pur, A647, Biot, FITC, LE, RPE | MCA503 | SC5b-9 | 3R2/0 | E, FC, IHC-F, WB | Pur | MCA2611 |

*Requires special treatment refer, to product data sheet. **Refer to the website for each format specific product code.

Abbreviations: Axxx = Alexa Fluor®, Az Fr = Azide Free, Biot = Biotin, E = ELISA, EM = Immuno Electron Microscopy, FC = Flow Cytometry, FN = Functional Assay, ID = Immunodiffusion, IF/ICC = Immunofluorescence/Immunocytochemistry, IHC-F = Immunohistochemistry - Frozen (Cryostat), IHC-P = Immunohistochemistry - Paraffin, IP = Immunoprecipitation, LE = Low Endotoxin, Pur = Purified, S/N = Supernatant, TB = Turbidimetry, WB = Western Blotting.