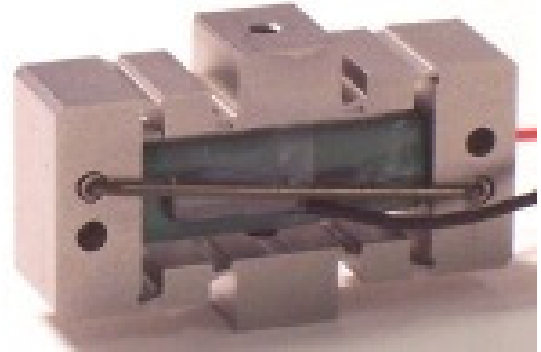


Description

DSM's FPA is a flexure guided piezoelectric actuator useful for both dynamic and static applications. Custom mounting conditions can be integrated into the design. "E" version actuators expand when they are energized.



Specifications

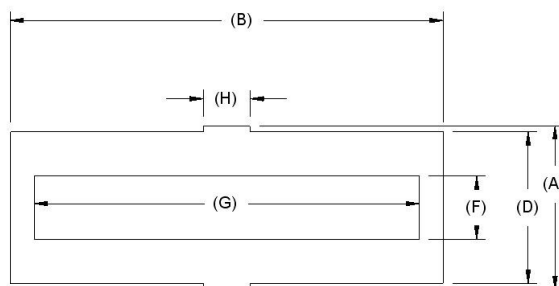
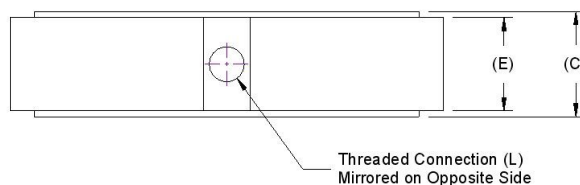
		Tolerance
Open-loop Travel (μm):	85	$\pm 10\%$
Operating Voltage (V):	-30 to +150	
Stiffness in motion direction ($\text{N}/\mu\text{m}$):	2.3	$\pm 10\%$
Unloaded resonant frequency (Hz):	1500	
Blocking Force (N):	195	$\pm 10\%$
Capacitance (μF):	1.80	Max
Material:	17-4 PH Stainless Steel	
Mass (g):	25	$\pm 5\%$

Options

(Contact DSM for current option pricing)

- Vacuum compatibility
- Mounting holes: Tapped 1#2 or other custom
- Connectors: Custom wire lengths and connectors available for your project
- Non-Magnetic compatibility

Geometry



	(mm)	(in)
Dim A:	15	0.6
Dim B:	28	1.1
Dim C:	10	0.4
Dim D:	13	0.5
Dim E:	8	0.3
Dim F:	4.8	0.2
Dim G:	25.8	1
Dim H:	6	0.2
Dim I:		
Dim J:		
Dim K:		
Dim L :	1_M3x0.5 on center	