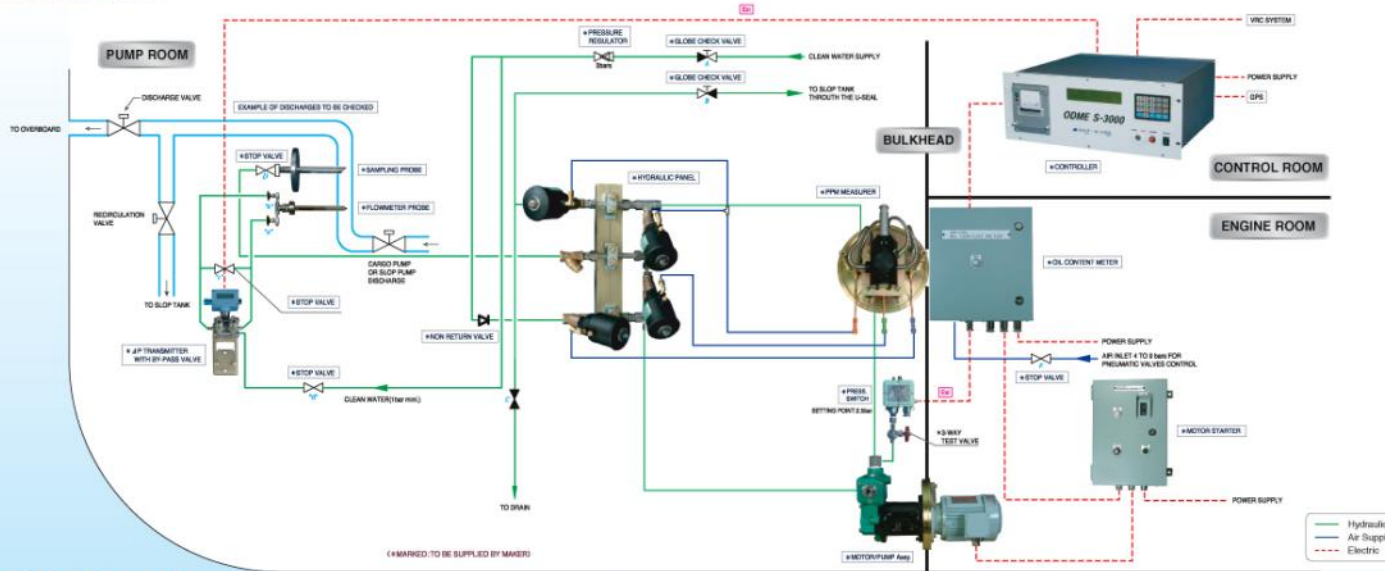


IMO RES. MEPC.108(49) ODME S-3000

PRODUCT OVERVIEW >>>>



SEIL-SERES (O.D.M.E)



Controller

- 440 x 360 x 177, 12kg
- 16 bit CPU with Intel 80C199KC.
- 40 x 4 Characters LCD Display
- 24 column matrix shuttle printer.
- Membrane keypad



Oil Content Meter

- 400 x 400 x 300, 32kg
- Scattered I.R. Light method.
- Multi cell sensor(Si-photodiode).
- Pneumatic solenoid vlv.
- Protected vibration



Motor Starter

- 250 x 300 x 180, 10kg
- 440V, 220V/110V transformer
- Overload relay



Pressure Switch

- 151 x 151 x 130, 2kg
- 0-16 bar
- Automatic pump shut-down



Motor/Pump Assy.

- 2.2kW 3A motor
- Centrifugal type pump
- Class certified bulkhead penetration



PPM Measurer

- 360 x 293 x 180, 30kg
- 4 optical fibers
- Self cleaning system
- Class certified bulkhead penetration plate



Hydraulic Panel

- 600 x 404 x 580, 15kg
- 4 pneumatic valve
- Sample water filter
- 2-8 bar air supply



Sampling Probe

- SK 65A flange



Flowmeter & Probe

- 311 x 104 x 102, 9kg flowmeter
- Pilot-tube type probe
- Intrinsically safe
- Below ± 1% accuracy

IMO RES. MEPC.108(49)

- Guidelines and specifications for oil discharge monitoring and control systems for above 150 Gross Tons Tankers.
- Input Information : PPM, Flow Rate, Ship's Speed, GPS(Latitude & Longitude), Date & Time
- Starting Interlock
- Discharge Valve Control
- Output Information(Displayed and printed) : L/N.M, Total Quantity, Date & Time, PPM, GPS(Latitude & Longitude)

Features

- Can be used as dirty and clean ballast, oil like substances monitor control system.
- Intrinsically safe, 4 optical fibers.
- Near and far infra-red detector using for Si-photodiode.
- Short response time(16 sec).
- Automatic back-flushing sequence of the complete hydraulic panel.
- Automatic zeroing and calibration.
- Self-cleaning measuring cell design.
- All informations displayed in 40 x 4 LCD.
- Microprocessor technology with RTC chip memories Y2K compliance.
- Communication between operators console and oil content meter by a current loop method.
- Insensitive to ships motion and vibration.
- Accuracy better than IMO RES. MEPC.108(49) requirements.
- Easy installation requiring little work & time.
- Flowmeter working by differential pressure, for control unit.
- Log input by electrical or dry contact impulse.
- Automatic monitoring of up to multi channels(option).

Alarms

- Oil Content meter failure
- Sample pump not powered
- No sample
- Clean water failure
- Flowmeter failure
- Printer paper failure
- Calibration failure
- PPM range exceeded
- Speed low
- 30 L/N.M exceeded
- Total oil limit exceeded
- Overboard vlv wrongly open
- Speed Signal failure
- Sample pump wrongly powered
- GPS signal failure



Notified Body No. 0575

15K3 5001

We are here for supporting you



**Oil Discharge
Monitoring Equipment
S-3000**
IMO RES. MEPC.108(49)

**Oil Discharge
Monitoring Equipment**

S-3000
IMO RESOLUTION MEPC.108(49)

Company Introduction

SEIL SERES Co., Ltd.

•Delivery Reference of O.D.M.E. (As of Jan. 1st, 2005)•

- 1990 Established.
- 1990 Started local manufacturing of the ODME under the technical licence with Seres, France.
- 1992 Started local manufacturing of the VRC system under the technical licence with KSB Amri, France.
- 1999 Acquired ISO 9001 certification from DNV.
- 1999 Developed the Hydraulic actuator(HQ series).
- 1999 Awarded the prize of High Superior Technology Company by KOTEC.
- 2000 Moved into a new factory at Noksan Industrial Zone in Busan.
- 2004 ODME Alliance with SERES France for the new model ODME S-3000
- 2004 Opened Singapore office.
- 2005 Completed the Construction of the 2nd Factory.
- 2005 Opened Shanghai office in China.

DELIVERY YEAR	TYPE						TOTAL
	V.L.C.C	F.P.S.O	P.C	C.O.T	SHUTTLE OILSHIP		
1991 ~ 1997	82		95	59	5	1	242
1998	5		32	24		2	63
1999	4	1	11	27	1	3	47
2000			20	23		1	45
2001	5	1	32	1		1	40
2002	18		47	26		3	95
2003	6		74	35			115
2004	11	2	74	30			117
2005	3		72	41			116
TOTAL	134	4	457	298	11	7	881

- Seoul Office** 4F, Yeon-seung Bldg, 70-1 Samsung-dong, Gangnam-gu, Seoul, Korea
Tel : +82-2-3447-3371~6
Fax : +82-2-3444-2142
- Busan Factory** 1597-3, Songjeong-dong, Gangseo-gu, Busan, Korea
Tel : +82-51-831-1857~62
Fax : +82-51-831-1863~4
E-mail: sales@seilseres.com
- Singapore Office** 12-B Lorong K Tekak Kurai Singapore 425610
Tel : +65-6100 7345
Fax : +65-6396 1345
- Partner** SERES "La Duranee" BP 67000, 13793 Aix-en-Provence, France
Tel : +33-442-97-37-97
Fax : +33-442-97-30-30
E-mail: seres-france@seres-france.com
- Shanghai Office** 26/F, Room G, Zaolong Universe Building, Zhongshan West Road, Shanghai, China



Printed in March 2005

