

Safyr[®]: supporting information oriented SAP and SAP BW projects

Safyr & SAP Use Cases

Aircraft Manufacturer

Safyr provisions Boeing's data architects with SAP data models to support data migration into SAP during their major implementation project.

Renewable Energy

Hydro Tasmania used Safyr to bring their SAP reporting project back on track by using it to accelerate data discovery after being informed the SAP data model was "not available".

Electronics Distributor

RS Components use Safyr to accelerate and enable accurate reporting, analytics and integration projects involving SAP by providing rapid access to their SAP metadata.

Network Infrastructure

CommScope uses Safyr to provide SAP and Salesforce data models to their data modeling and architecture solutions in support of their Enterprise wide global Data Governance project.

Car Manufacturer

Safyr enables Volkswagen FS to rapidly find data models from SAP required for Data Masking project before they can be used in their modeling solution.



Are you still wasting time and money using traditional methods to find and understand the data model which underpins your SAP or SAP BW applications?

Increase visibility & value

If you are an Information Management professional, or are responsible for projects which involve SAP data then Safyr is likely to be of real benefit to you.

Safyr provides analysts, architects and modelers with the ability to 'see' into the data foundations of their SAP and SAP BW systems—as implemented.

Safyr reduces the time and cost of source data discovery and mitigates against the risk of inaccurate data analysis.

Effective data discovery—the SAP challenge

Critical IT initiatives and projects such as Data Warehouse, Big Data, Master Data Management, ETL, Data Integration and Migration, Data Governance, Data Modelling, Enterprise Architecture and others all share a common challenge.

This is the ability to access and understand the metadata which are the underlying foundations of the Enterprise Applications which hold much of the data required.

With SAP and SAP BW, this challenge is made worse by the huge number of tables (over 90,000) in the data model, the lack of relationship or descriptive information in the database catalogues and the level of customisation. Before Safyr, there was no way for data professionals to quickly and easily search, navigate and utilise this information for their projects.

Safyr provides a unique solution. It extracts metadata from the source SAP system, as implemented, and allows it to be analysed and used in context.

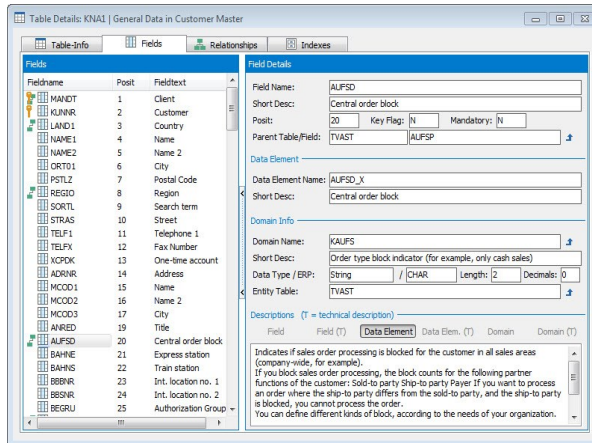
When to consider Safyr

- If you have SAP, (or Oracle or Salesforce) applications and need to understand their data structures for use with modelling or other software tools in the context of your project.
- When comprehensive source data or metadata analysis is critical for the success of your project.
- When it is taking too long or costing too much to accurately find the data in complex SAP, (or Oracle or Salesforce) applications.

Benefits

- Gain more from your investment in SAP and accelerate project delivery.
- Reduce the cost, time and risk associated with complex application metadata discovery.

Technology overview



Safyr extracts metadata from the SAP Data Dictionary including customisations.

This way logical as well as physical names and descriptions are retrieved. This information is stored in a Safyr repository so users work independently of the application.

Safyr's analysis features allow for easy navigation through complex data structures which, together with its powerful search, filtering and application hierarchy capabilities provide for rapid identification of the tables and related tables needed in the context of the task at hand.

Users can also view the details of any table including fields, descriptions, attributes and indexes. Results can be visualised in Safyr or exported to other tools.

Applications

SAP
SAP BW
SAP on HANA
Oracle E-Business Suite
JD Edwards
Siebel
PeopleSoft
Salesforce and Force applications

'ETL for Metadata'

For applications not included above Safyr can be configured to map their metadata into its own metamodel.
E.g. Microsoft Dynamics
Please contact Silwood to discuss your particular packaged systems.

Pre-Configured Content

Business contextual metadata content is provided for a number of packages including SAP, JD Edwards and others.

Export Results

Results of Safyr analysis can be exported to modelling, ETL, integration, master data, metadata and other solutions.

"Silwood Technology is unique in having recognised, and acted on, the need for a better understanding of enterprise applications, notably the dominant ERP and CRM solutions provided by SAP and Oracle. Having this depth of understanding is critical for many enterprise projects, ranging from business intelligence to data governance, from data integration to master data management, and from data migration to application development...."

In our opinion, every major user of an Oracle or SAP application should be a Safyr customer."

Philip Howard, Bloor Research

Key Features

- Metadata extracted includes**

Tables	Fields	Views	Data elements
Customisations	Physical names	Logical names	Descriptions
- Identifies Parent/Child relationships
- Performs table row count during extraction to allow filtering on tables containing data and reduce size of results sets
- Automatic creation of SAP Application Hierarchy of Modules and associates tables with Programs and elements e.g. transaction codes
- Advanced features for search, filtering, scoping, analysis and visualisation of metadata
- Comparison of specific results sets or complete application instances with granular control over items to be compared
- Export results to third party modelling and collaboration tools as well as to integration and metadata management tools

Need help? Ask us about:

- Exploratory conversation
- Presentation & Demonstration
- Proof of Concept
- Technical Support
- Assistance with business case

Contact us:

W: www.silwoodtechnology.com
T: +44 1344 876553
E: info@silwoodtechnology.com

Silwood Technology Ltd
Silwood Business Park
Buckhurst Road
Ascot, Berkshire
SL5 7PW United Kingdom