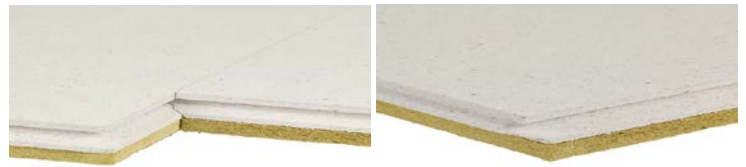


SOUNDIS DRY SCREEDPANEL 28MF ULTRA

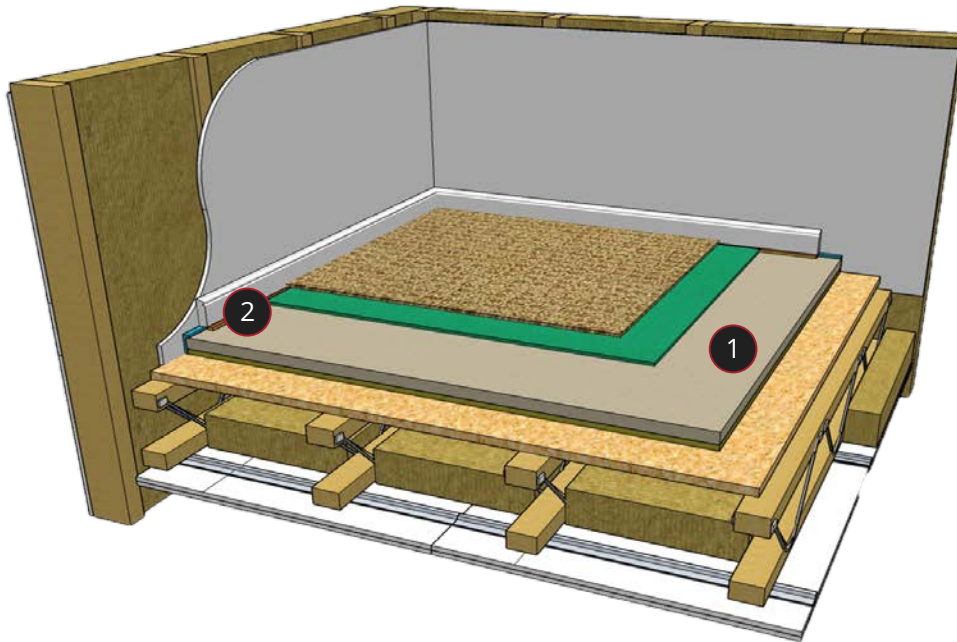
Description

Soundis dry ScreedPanel 28 MF *ULTRA* is a composite panel for acoustic flooring applications, consisting of an upper surface of 18mm ultra high density reinforced gypsum fibre panel factory bonded to a 10mm recycled fibrous resilient layer. These dry fit screed replacement panels reduce floor height and save on drying times.

Soundis dry ScreedPanel 28 MF *ULTRA* is ideally suited for acoustic flooring applications where high levels of both airborne and impact sound performance are required; such as residential, care homes and student accommodation schemes.



Buildup visualisation



Visualisation buildup includes:

1. Soundis dry ScreedPanel 28 MF *ULTRA*
2. L Shaped Flanking Strip

Product Weight and Dimensions

Panel Dimension	600mm (W) x 1200mm (L) x 28mm (H)
Panel m ²	0.72 m ² Per Panel
Panel Per Pallet	60 Panels (43.2 m ²)
Panel Weight	26.2 kg/m ² - 18.9 kg Per Panel
Pallet Dimensions	1200mm (W) x 1200mm (L) x 970mm (H)
Pallet Weight	1160 kg
Density	1400 kg/m ³

Key Benefits



Ceramic and porcelain floors can be laid directly without decoupling mat



Non-combustible (A2)



T&G no screws required

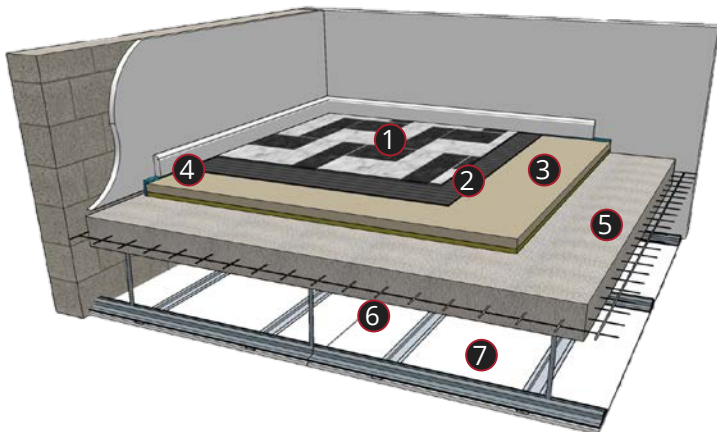


High impact sound performance



High Density

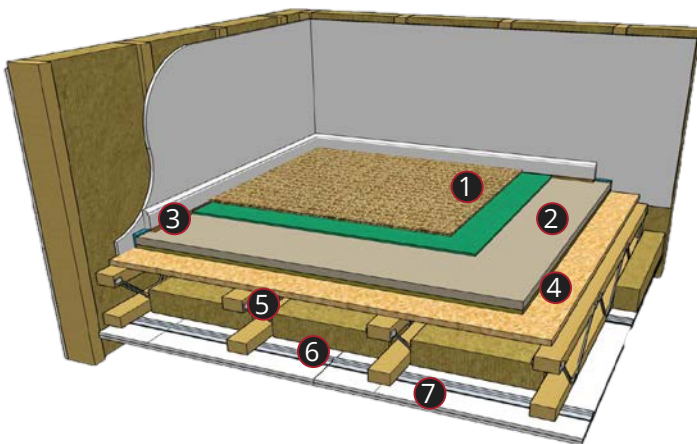
Typical Acoustic Performances



Concrete Insitu Floor

1. Ceramic tiles
2. Electric UFH cables set in tile adhesive
3. Dry ScreedPanel 28 MF *ULTRA*
4. L Shaped Flanking strip
5. 200mm Reinforced insitu concrete slab
6. MF ceiling (min 100mm void)
7. 1 x 9.5mm acoustic plasterboard

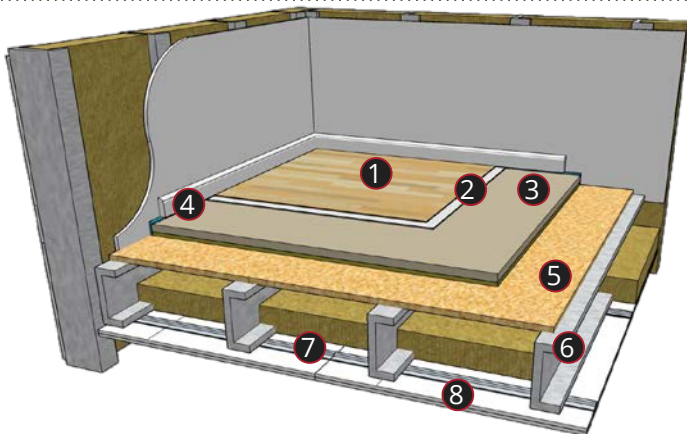
DnT,w + Ctr
53dB
LnT,W
47dB
ΔL_w
22dB



Timber Joisted Floor

1. Carpet & underlay
2. Dry ScreedPanel 28 MF *ULTRA*
3. L Shaped Flanking Strip
4. 18mm (min) OSB or Chipboard subfloor
5. 225mm (min) timber floor joist
6. 16mm resilient bars
7. 2 x 15mm acoustic plasterboard

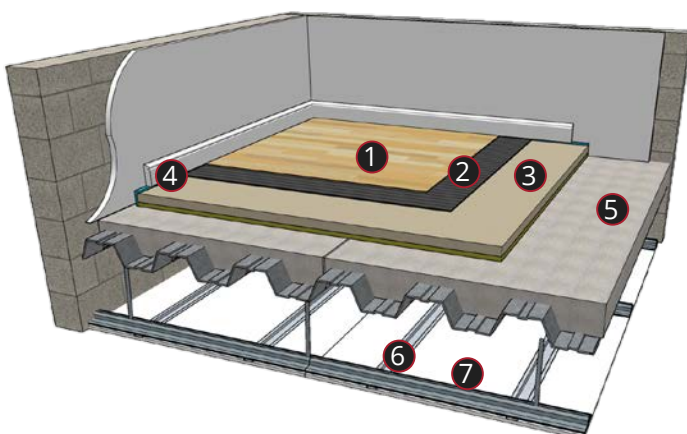
DnT,w + Ctr
51dB
LnT,W
56dB



Steel Joisted Floor

1. LVT or sheet vinyl flooring
2. Self-levelling & adhesive layers
3. Dry ScreedPanel 28 MF *ULTRA*
4. L Shaped Flanking Strip
5. 18mm (min) OSB chipboard subfloor
6. 225mm (min) steel floor joists
7. 16mm resilient bars
8. 2 x 15mm acoustic plasterboard

DnT,w + Ctr
54dB
LnT,W
55dB



Profiled Metal Deck

1. Engineer timber flooring
2. Adhesive or decoupling layer
3. Dry ScreedPanel 28 MF *ULTRA*
4. L Shaped Flanking Strip
5. 130mm concrete on profiled metal deck
6. MF ceiling (min 100mm void)
7. 1 x 9.5mm acoustic plasterboard

DnT,w + Ctr
53dB
LnT,W
47dB