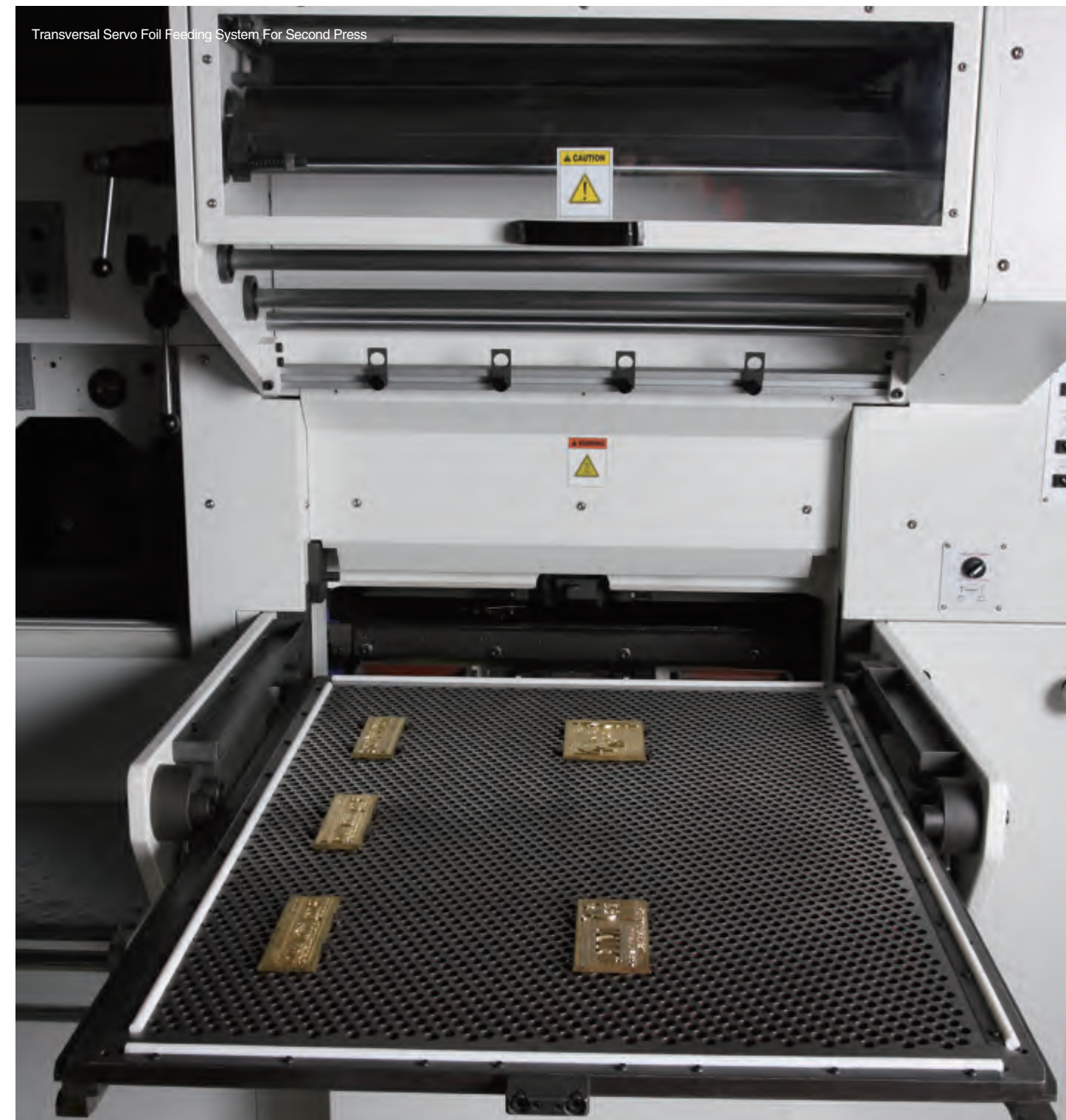


Foil-stamping, embossing, die-cutting, each two combination of them can be produced in one pass, improve the accuracy and efficiency; reduce the process flow time and the impact by deformation of sheets.

- Overcome the constraint of one main platen press section on normal foil-stamping machine, this two main platen press section machine can produce any two combination of foil-stamping, embossing, die-cutting.
- Two time stamping process or stamping plus die-cutting process can be finished by one time sheet fed, this will improve the efficiency dramatically, reduce labor cost and scrap rate, improve the accuracy and the security of product.



Transversal Servo Foil Feeding System For Second Press



Platen Press Section

MK 920SS

Feeder

- 1) Strong suction head, 4 lifting and 5 forwarding suction cups. The suction head can be adjusted to the angle of the sheets if the stock quality varies.
- 2) When the sheets arrive at the front lays, the speed control system guarantees the precise location of the sheet.
- 3) Vernier calibration is adjusted manually for accuracy and ease of operation.
- 4) The side lays have a pull or push facility which can be adjusted easily by one screw.
- 5) Imported conveying belt.
- 6) Monobuoy electromagnetic clutch.

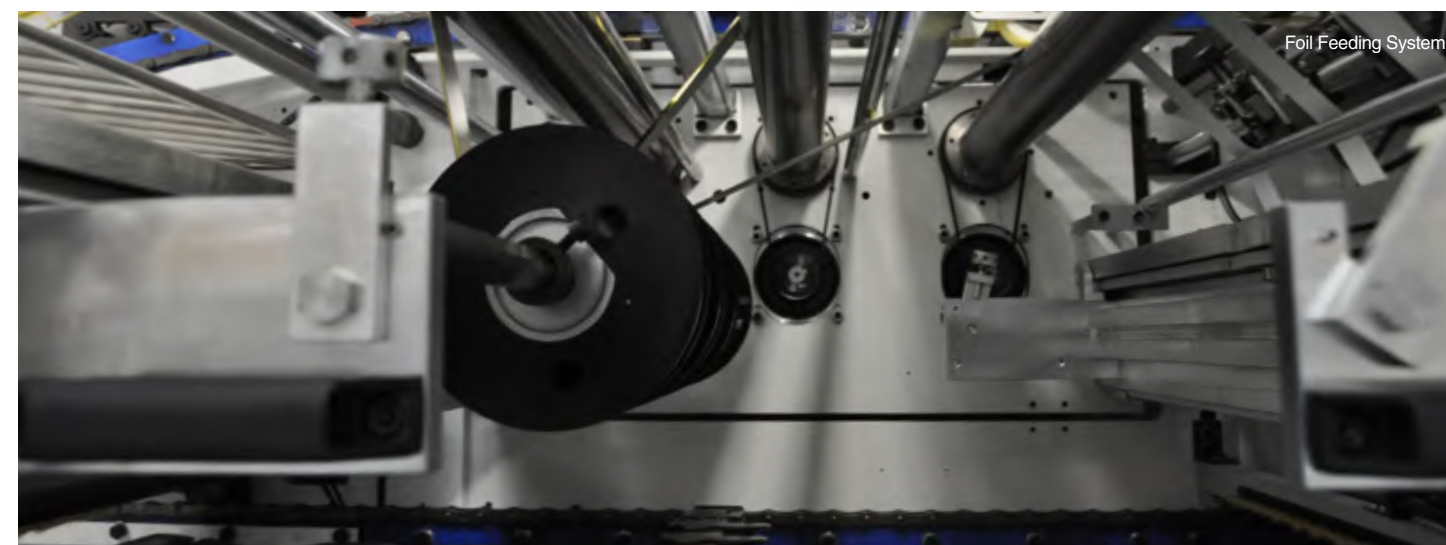
Platen Press Section

- 1) Synchronized energy transferring.
- 2) Servo motor for pressure adjustment.
- 3) 3mm+1mm combined type lower plate and this bottom plate have a vernier calibration system which adjusts the plate in two directions.
- 4) The gripper bar uses special ultra-aluminum extrusions, surface-treated aluminum alloy after anodizing. Patented design of the adjusting mechanism to ensure that the two units have high register accuracy.
- 5) Main drive chains are imported and are a specially strengthened chain design, the stress intensity is increased to 46%, which improves the stability and accuracy of the machine as well as extending the service life of the machine.
- 6) 20 individual heated zones accurately control the bed temperature with a range of $\pm 5^{\circ}\text{C}$. The heating controls are imported and have a long life span.
- 7) Pneumatic locking device of lower plate.



Foil Feeding System

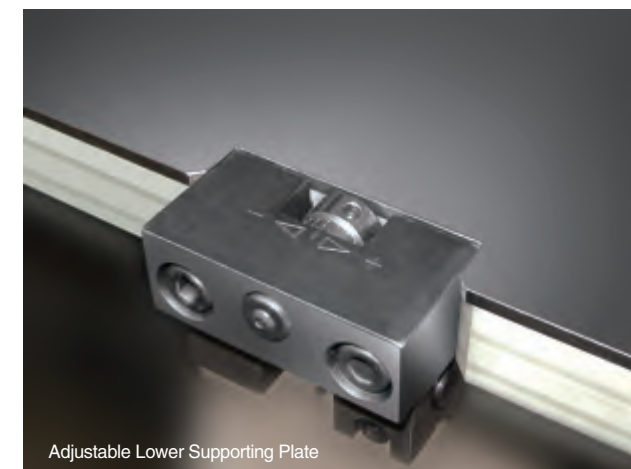
- 1) The foil controlling system on press 1 uses three servo driven axis for foil feeding. The largest diameter of foil is $\phi 250\text{mm}$, which saves a considerable amount of time when changing foil and reduces machine down time.
- 2) Press 2 also has two servo driven axis on the cross pull foil feeding unit. The largest diameter of foil is $\phi 200\text{mm}$.
- 3) Brush rollers for waste foil.



Foil Feeding System

Sheet Delivery Unit

- 1) Breaking brush slow down sheet speed for neat and tidy piling of sheets on delivery pile.
- 2) Manual fence style non-stop delivery system.
- 3) Pneumatic sampling device.
- 4) Mechanical sheets trimming device at delivery section.



Adjustable Lower Supporting Plate

Adjustable Lower Supporting Plate

- 1) 3mm+1mm combined type lower plate.
- 2) This bottom plate has a vernier calibration system which adjusts the plate in two directions.

Electronic System


The electronic designed base on Mitsubishi PLC monitoring and self-diagnostic system with information display screen. Electronic detectors on entire machine ensure the highest safety of equipment and operators. All electronic and electrical parts are CE or UL approved.



Safety Module

Configuration Depends on Your Demands.

MK920SS
Foil Stamping /Die cutting
Combination

Sheet-Fed 

Platen 

Duo-Press 

Foil Stamping 

Die Cutting 

Technical Data	MK920SS
Max sheet size	920mm X 650mm
Min sheet size	360mm X 320mm
Max die cutting size	910mm X 630mm
Max stamping size	900mm X 600mm
Gripper margin	9-17mm
Inner chase size	960mm x 666mm
Stoke range	90-2000g/m ² (paper) 0.1-2mm(paper) ≤4mm(corrugated)
Max working force	200 tons
Max working speed	5000 s/h die cutting 5000 s/h stamping
Max feeder pile height	1440mm (wooden pallet included)
Max delivery pile height	1200mm (wooden pallet included)
Max diameter of foil roll in longitudinal	Φ250mm
Widest dimension of foil roller in transversal	Φ200mm
Die cutting accuracy	≤ ± 0.075mm(Die cutting and stamping) ≤ ± 0.20mm (Hologram stamping)
Full load wattage	76.6KW
Heating system	20 heating zones, 40-180°C Adjustable
Width of the foil	20-910mm
Overall dimension	7360mm (L) x5500mm (W) x2400mm (H)
Air supply	0.6-0.7MPa, ≥ 1m ³ /min
Net weight	About 26 tons

To configure ● Standard configuration ○ Optional configuration

The high-speed feeder is adjusted with 4 lifting suction cups and 5 carrier suction cups	●
Non-stop sheet feed system with high speed	●
Non-stop sheet delivery system	●
Single-position engagement clutch with high-performance	●
Conveyor belt wide in width	●
Vacuum feeding system	○
Pneumatic side lay	—
Imported torque restrainer	●
Imported worm wheel and worm set products	●
Pneumatic locking device	●
Bi-directional pneumatic locking device	—
3+1mm adjustable lower supporting plate	●
Films fasten device	●
Standard honeycomb chase	○
Standard die-cutting chase	○
Chase quick locking device	○
Imported pneumatic clutch	●
High precision transversal servo foil feeding system	●
High precision longitudinal servo foil feeding system	●
Foil unwind device	●
Foil break detector	●
Air blast foil separation system	●
20 heating zones	●
Central registration system	●
High speed indexing device	●
Patent design gripper bar	●
Automatic lubricating system	●
CE certification	●
Overload Protector	—
Mitsubishi PLC Q series	—
Mitsubishi PLC FX series	●
Chase preparation stand	○
Pre-stacking device	○
Pre-loading device	○
Pre-stocking device	●
Used foil rewind device	○
Hologram foil stamping	○
Adjustable die-cutting chase and honeycomb chas	○

Brochure content is only for reference, the machines please refer to the actual products.



Masterwork Machinery Co.,Ltd was established in 1995. It is specifically established as a high technology manufacturer of print finishing equipment. On March 29th, 2012, Masterwork Machinery Co.,Ltd has successfully listed on the stock exchange in Shenzhen, which lays a solid foundation for the company's further development.

At present, Masterwork Machinery Co.,Ltd can be found in over 20 countries. The company has continuously given full play to the advantages in resource, technology and talents. It devotes itself to promoting the core business—manufacture of the printing & packaging equipment. The products have gained acceptance all over the world. Masterwork Machinery Co.,Ltd has become one of the preferred suppliers for the solutions of the global print finishing equipment.

For one company and successful team, every step made is covered with sweat and smile. Hard forward and rain or shine is the promise made by MK, and its belief for the future. The past excellent performance has laid a solid foundation for MK's sustainable growth. MK hopes to achieve the bright future by the close co-operation with the business partner.

USA
Masterwork USA Inc
Address: PO Box 625, Budd lake, NJ 07828
Tel:973-691-8321
Tel:973-691-8321
Fax:888-467-2293
www.usa.com
Email: sales@mkusa.com

Thailand
MKM(Thailand) Co., Ltd.
Address: 269/2 Soi Chock Chai Jong Cham Roen
Rama 3 Road, Bangpoo, Bangkok 10120 Thailand
Tel:66-2-6823888
Fax:66-2-6823969

Korea
Samwoo Co.
Address: Rm 709, Uni-TechVil, 1141-2, Baiksuk-Dong, Ilsan Dong-Gu,
Goyang-Si, Kyungki-Do, Republic of Korea
Tel:82-31-9054841
Fax:82-31-9054844

Turkey
Pasifik İc ve Dis Ticaret ve Muresillik A.S.
Address: 100. Yil Mah. Mas-Sit Matbaacilar Sitesi
3. Caddesi No: 199/B Bagcilar 34204
Istanbul - Turkey
Tel: +90 212 432 7777
Fax: +90 212 432 7799
Email: pasifik@pasifiktrading.com.tr

Ukraine
Polygraphimport Ltd.,Upp
Address: 02105, Ukraine Kiev, 5 Tampere Str
Tel:38-44-5010646
Fax:38-44-5010645/5590464

Singapore
Kmlink Pte Ltd
Address: 1 Syed Alwi Road, #04-01 Song Lin Building, Singapore 207628
Tel:(65)63035433

Brazil
RGM Comercio Importação e Exportação de Máquinas Ltda
Address: Av. dos Bandeirantes, 2649
04510-012 São Paulo - SP
www.rgm-group.com.br

Guatemala Costa Rica El Salvador
Gevi S.A.
Address: 4a Avenida "A" 22-47 Zona 14,Guatemala, 01014,Guatemala C.A.
Tel: 502-2386764
www.grupogevisa.com



MASTERWORK MACHINERY CO., LTD.
No.11 Shuangchunzhonglu,
Beichen Science and Technology Area,
Tianjin, 300400, China
Tel: 86 22 26978899 (Direct line) 86 22 26976666 (Operator)
Fax: 86 22 26973430
Website: www.mkmchina.com



有恒·长荣
Together & Better



Creation-Build Your Dream Economy-bring
You Value-added Enjoyment

MK920SS
Foil Stamping /Die Cutting Combination Machine

天津长荣印刷设备股份有限公司
MASTERWORK MACHINERY CO., LTD.



Change Traditional Ideas,Combine As One

First choice for high-end cigarette packages,
Special creation for the top-quality packaging and your demand

- Double time stamping work dashed out at a heat,meet the demands of high quality packages.
- Reduce process flow time, cut human costs, reduce rejection rate, improve quality of packages, multiply your efficiency.
- Faster plate changing, the chase preparation stand makes the stamping plate changing time more shorter,save more time for you.
- Vacuum feeding system as option.