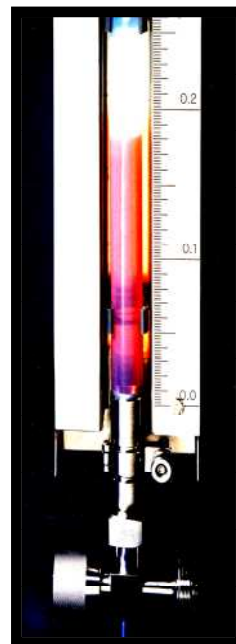


Description: The VLIH is a non glass vessel level indicator. The construction used a transparent tube and swaged hygienic stainless steel fittings.

Approvals: FDA 21CFR177.1550

Features:

- Shatterproof sight tube for maximum safety
- Materials of construction suitable for hygienic use
- Uses the Series 7000 swaging system for crevice free fittings connection
- Length to suit customer requirements



Dimensions			
NB inches	DN mm	Id mm	Wall Thickness
1/2	15	12.7	2.5
3/4	20	19.1	3.2
1	25	21.7	3.2
1 1/2	40	34.4	3.2
2	50	47.1	3.2

Options :

- 1) Fittings - Hygienic end connections RJT, IDF/ISS, DIN, SMS, Tri-clamp etc., Elbows—fixed to rotating
- 2) Fittings - Straight, stainless steel elbows.
- 3) Fittings - Hastelloy C22, C276.
- 4) Rear Support—Stainless steel backing board.
- 5) Viewing - Hollow ball indicator, lamps.
- 6) Scales - Graduated to customer requirements.

Please consult Flexrite for Working Pressures and Temperatures.

Website : www.flexrite.co.uk

E-mail: enquiry@flexrite.co.uk

Tel : +44 (0)1933 673699

Fax : +44 (0)1933 675819

19 The Trinity Centre
Park Farm Industrial Estate,
Wellingborough, NN8 6ZB