



**FIRESCREEN FEEL SAFE**

## FIRESCREEN® TEMPERATURE T1 (EI30)



### Operation

Firescreen® is connected to the fire alarm system or equipped with smoke detectors, so that in case of fire alarm, the screen closes automatically.

### Standard specifications

Installation:	In the clear opening.
Application:	Isolation without sprinklers, realization of an evacuation route and meets the requirements of a firewall.
Purpose:	Fire curtain only closes in the event of a fire alarm.
Fire resistance:	Tested in accordance with EN 1634-1; meets the following criteria: - Integrity E - Thermal insulation temperature both $I_1$ and $I_2$ - Heat radiation W
Reaction to fire:	Tested in accordance with EN 13501-1; B, S1, d0
Max. size:	5000x4000mm (wxh)
Material:	Technical textile, having a silicone-based smoke-tight grey coating, filled with a material that will froth under fire.
Fabric thickness:	Total thickness 13 mm.
Fabric weight / m <sup>2</sup> :	9 kg per m <sup>2</sup> .
Side guides + headbox:	Sendzimir zinc coated steel.
Bottom bar	Steel bar.

### Closing in the event of power failure:

- GFS (Gravity Fail Safe).  
The curtain descends by gravity in the event of a power failure.
- EFS (Electrical Fail Safe).  
The curtain descends by backup battery power in the event of a power failure.

### Firescreen® Control and Smart® Control

The control panel has also been provided with option for connection to the fire alarm system (BMC) and has LED indicators for:

- Power
- Active fire signal
- Maintenance
- Battery power (only with Firescreen® Control)

### Options

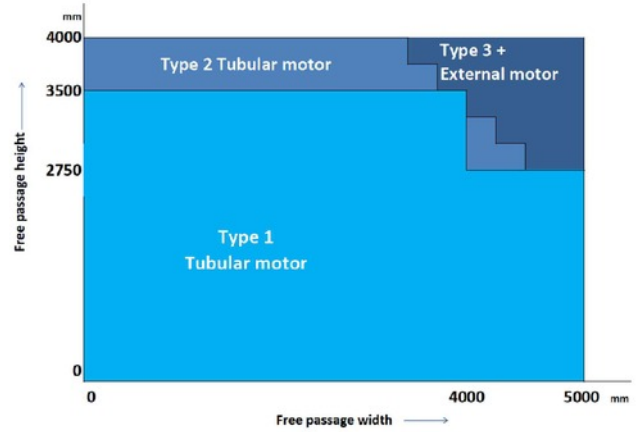
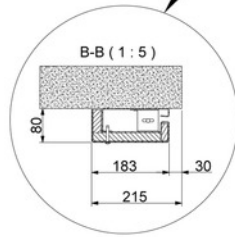
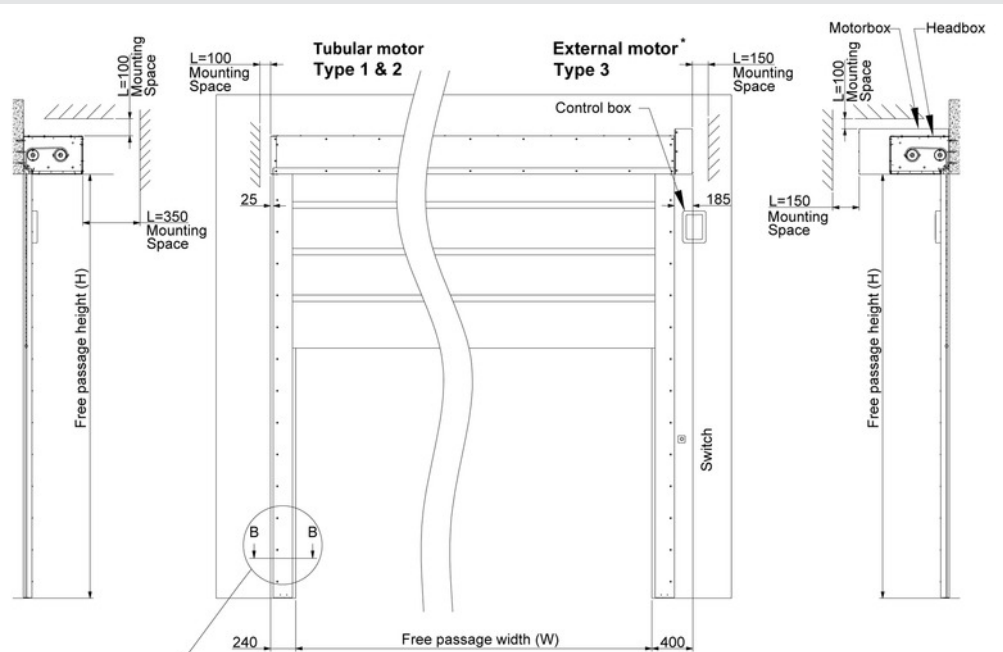
- Powder coating: Side guides, headbox and consoles in desired RAL colour.
- Emergency button (EFS)
- Smoke detectors (optional)
- Lights and sounders (optional)
- Standalone LED display (optional)
- 24V power pack (GFS) prevents the screen from closing in the case of a brief power failure.

### Other available types

Firescreen® T2 - EI 60, Firescreen® T3 - EI 90, Firescreen® T4 - EI 120

- ▶ 30 minutes fire resistant
- ▶ Thermal insulation temperature  $\Delta T$  140°C
- ▶ Heat radiation  $< 1 \text{ kW/m}^2$
- ▶ Tested in accordance with EN 1634-1
- ▶ Tested in accordance with EN 13501-1
- ▶ Compact design
- ▶ Lightweight material

# FIRESCREEN® TEMPERATURE T1 (EI30)



Dimensions				
	Space required for the side guides		Mounting space headbox (WxH)	Mounting space motorbox (WxH)
type 1	Guides left & right	215mm	460 x 310 mm	-
type 2	Guides left & right	215mm	560 x 360 mm	-
type 3	Guides left & right	215mm	560 x 360 mm	850 x 430 mm

\* External motor can be placed both horizontally and vertically. Please ask your dealer for details.



**THERMAX**

**THERMAX Contracting Services Limited**

18-24 Gleadless Road,  
Heeley, Sheffield, S2 3AB  
Tel: +44 (0) 114 28 122 81  
Fax: +44 (0) 114 28 122 77  
sales@thermax.co.uk  
www.thermax.co.uk

