

HANCOCK COUNTY SHERIFF'S OFFICE



*A COMMUNITY ORIENTED
POLICING AGENCY*

2010 ANNUAL REPORT

200 West Crawford Street
Findlay, Ohio 45840
www.hancocksheriff.org

**A Message From:
Michael E. Heldman
Hancock County Sheriff**



Dear Citizens of Hancock County:

The year 2010 found us recovering from the reductions and uncertainty of 2009. 2010 was a fairly quiet year overall, for which we were very thankful.

In January 2010, we were able to recall most of the employees that we had laid off in December 2009. After the recalls, we still were 3 employees less than in January 2009—2 corrections officers and 1 administrative staff position. During the year, we were able to increase our staff by 2 employees: one drug detective, approved by the County Commissioners due to the increase in drug activity in the county, and one deputy added through a grant for Directed Patrol.

During the year, a grant for overtime was received that helped alleviate expenses in the general fund. With this grant, we were able to continue working overtime as needed. We also received a grant from the Office of Criminal Justice to continue our School Resource Officer program. We will continue to pursue additional funding to aid the office in being able to maintain the current level of services to the community at the least amount of cost to Hancock County.

The Sheriff's Office is looking forward to another successful year in 2011, providing services to the best of our ability and serving citizens throughout Hancock County. Thank you for your continued support of law enforcement and the Hancock County Sheriff's Office.

More detailed information is available through the office. As always, please do not hesitate to contact me with any questions or concerns you have about this office or the job we do.

Sincerely,

Michael E. Heldman

Michael E. Heldman, Sheriff



Table of Contents

Introductory Message.....	2
Table of Contents.....	3
Mission Statement & Guiding Principles.....	4
Agency Demographics.....	5
Organizational Chart.....	6
2010 Employee Awards.....	7,8
Enforcement.....	9-11
Transport Warrant and Civil Unit.....	12
Corrections.....	13
Special Units—Volunteer Organizations.....	14
Statistical Data.....	15-27



Mission Statement

The mission of the Hancock County Sheriff's Office is to provide professional services which ensure the safety and security of our citizens, maintain human rights, protect property, and preserve life, by adhering to a philosophy that allows law enforcement and community residents to work together to prevent and solve crime.

Our Guiding Principles

- We are committed to maintaining human rights, the protection of property and the preservation of life.*
- We are committed to professionalism and excellence.*
- We will ensure the safety and security of our citizens.*



Hancock County Sheriff's Office

Agency Demographics



Sheriff Michael E. Heldman
Captain Roger Treece
Jail Administrator Lt. Ryan Kidwell



The Sheriff's Office laid off 7 employees in early December 2009, but were able to call back 4 positions by mid January, 2010. The Office employed 80 persons after recall of the laid off employees. In 2010, we were able to add one detective to help meet increasing demand in that area, and received a grant to fund another employee. Of those, 33 are sworn officers and 49 are civilian officers. The office employs 56 males and 26 females. The Sheriff's Office is comprised of several units, which include:

Sheriff		1
Captain		1
Enforcement	Road Patrol	21
	School Resource Officer	1
	Detective Unit	4
	Communications	7
	Transport /Warrant	5
	Support Staff	2
Corrections	Corrections Staff	35
	Support Staff	2
Administrative Staff		<u>3</u>
		82

Staffing Comparison

<u>Year</u>	<u>2010</u>	<u>2009</u>	<u>2007</u>	<u>2002</u>	<u>1997</u>
Enforcement	45	43	47	52	44
Corrections	37	37	39	41	41
ROC	0	0	3	2	0
Total Employees	<u>82</u>	<u>80</u>	<u>89</u>	<u>95</u>	<u>85</u>

We added several employees between 1997 and 2002, increasing our force to keep up with the growing demands of the growth in population and business in Hancock County. In December 2002, we lost 7 employees to the financial crisis. In 2008, we lost 4 employees to the hiring freeze and 2 more to layoffs. In 2009, we lost 3 more positions due to layoffs. In 2010, we were able to add 2 more employees. The increasing demands of the growth in the area and the ever increasing state mandated services make it very challenging for the Office to keep providing the level of service the citizens of Hancock County are used to and deserve.

HANCOCK COUNTY SHERIFF'S OFFICE

ORGANIZATIONAL CHART

DECEMBER, 2010

SHERIFF

Fiscal
Officer (1)

Captain
(1)

HR
Specialist
(1)

Lieutenant/Enforcement
(1)

Director of
Transport/
Writ Process
(1)

Lt/Jail Administrator (1)
Lt/Jail Operations (1)

Road
Sergeants (4)

Detective
Sgt (1)

Corrections
Sgts (4)

Clerks
(2)

Road
Deputies
(17)

Detectives
(1)

Transport
Deputies (4)

Clerks
(2)

Corrections
Officers (29)

Communications
Officers (7)

Detectives
Drug Unit (2)

Civil
Clerk (1)

Total 82 employees, including Sheriff



Hancock County Sheriff's Office
2010 Employee Awards



Peer Nominated Awards

Above & Beyond Award

**Shane Leeth
Brian Stozich**

110% Award

**Amanda Dean
Barry Turner**

Corrections Officer of the Year

Jim Saltzman

Deputy Sheriff of the Year

Gary Fink

Years of Service:

20 years	Jim Breyman Bill Laveglia
15 years	Jill Augsburger Colleen Wedge
10 years	Todd Bucher Jason Seem
5 years	T. J. Brooks Nick Clevidence Jim Saltzman

Driving Awards

10 years	Fred Smith
20 years	John Clevidence

Each year, all employees are asked for nominations for Correction Officer of the Year, Enforcement Officer of the Year, Above and Beyond Award and the 110% Award. When all nominations are in, votes are tabulated and those with the most votes are recognized for their contributions to the office. Awards were announced at the Annual Awards and Christmas Banquet at the Hancock County Senior Center in December.

No Sick Leave Used

Jim Breyman
John Clevidence
Nick Clevidence
Rodney Griffin
Corey Hartman
Tami House
Kevin Keefe
Mike McGuire
Tom Miller
Matt Paugh
Mark A. Price
Fred Smith
Barry Turner
Kathy Wefler
Brian Williams

Congratulations to all award winners. Your dedication to the Sheriff's Office is very much appreciated. Without our employees, we could not "get the job done".



Hancock County Sheriff's Office
2010 Employee Awards



Buckeye State Sheriff's Association Awards

BSSA Lifesaving Award

Dan Barnt
Cris Bell
Nick Clevidence
James Fawver
Ruth Hulihan
Kevin Keefe
Shane Leeth
Matt Paugh
Rick Stratton

BSSA Certificate of Merit

Amanda Dean
Steve Lowery

The BSSA awards are awarded based on the following criteria:

Lifesaving Award: Awarded to all officers directly responsible for the saving of a human life.

Certificate of Merit: Outstanding performance of duty under unusual or difficult conditions. The action need not involve exposure to physical danger but must involve the protection of life or property and involve unusual thoroughness, conscientiousness, determination and initiative.

Top Cop Awards

A new award program, the Top Cop Awards, were instituted in 2008. The award program was well received, so we have continued the program.

2010 Top Cop for OVI's	Deputy Tom Miller	71 arrests
2010 Top Cop for Drugs	Deputy Tom Miller	23 misdemeanor arrests

Congratulations to Tom for an excellent job. This was his third year in a row for OVI's!

Runners-up in each category were **Deputy Mark Price** with 10 OVI arrests and **Deputy Tim Saltzman** with 19 drug arrests.

2010 Owens Community College Alumni Association

Community Spirit Award

Awarded to Jim Woodward

Facility Barber, Hancock County Justice Center

Congratulations, Jim, and thank you for your dedication!

Enforcement

The Hancock County Road Patrol is responsible for patrolling the roads for traffic control, handling accidents, and responding to any calls for service received by the dispatch center. They are the main point of contact for the Sheriff's Office with the public.

The Sheriff's Office made 98 arrests in 2010, towed 56 vehicles and answered 221 alarm calls. They drove a total of 579,306 miles, using 37,221 gallons of gasoline. Total fuel costs were \$90,816, averaging \$2.44 per gallon.

Deputies wrote up 3,366 incident reports, handled 862 accidents, and issued 1,747 citations with a total of 1,998 violations. Of the accidents, 2 were fatal accidents, 26 were alcohol related, and there were 291 accidents involving deer.



Communications is a vital part of the Road Patrol. Dispatchers received 64,414 calls during 2010. These calls involve complaints, accidents, weather questions, and many other general inquiries. Dispatchers must filter these calls to determine if action is needed, then convey the information to the proper personnel within the office to be followed up on.

*For complete statistical information,
please see the Statistical Section starting on page 15.*

Sheriff's Office Contract Activity

The Sheriff's Office contracts for patrol services with the Hancock County Park District, the Village of Arlington and the Village of Van Buren. Contracts allow the entity to receive dedicated patrol hours, for which they pay an hourly fee. Below is a summary of activity for these contracts for 2010:

Park District	2,172 hours patrol 21 incidents were recorded and 12 citations issued
Arlington	763 hours patrol 42 incidents were recorded, 3 crashes occurred and 30 citations issued 7 papers were served Walkthroughs conducted—4 school, 21 bank and 178 business Attended 1 meeting
Van Buren	147 hours patrol 11 incidents were recorded, 0 crashes occurred and 40 citations issued Walkthroughs conducted—2 school, 9 business and 7 bar Attended 1 meeting

Enforcement

Detective Unit

The Detective unit consists of a sergeant and three detectives, two of which is assigned to the METRICH Task Force. The Detective unit was assigned 92 cases in 2010 and cleared 73, while making 36 arrests. The unit is also responsible for juvenile assault and abuse cases as well as all cases which require more in depth investigation than is provided by the road patrol.

In August 2010 as a result of House Bill 77, new audio/visual equipment was purchased and installed in the interview room and detective's office to record criminal interviews.

METRICH Drug Task Force

The HCSO Detective Unit is part of a ten county drug task force called METRICH. METRICH is one of the few de-centralized task forces in the State of Ohio promoting a Community Policing philosophy approach to task force operations. METRICH is also the largest drug task force in Ohio. The Sheriff's Office and the Findlay Police Department joined METRICH in October of 1999. METRICH is funded through the Office of Criminal Justice Services under Chief Phil Messer of the Mansfield Police Department. The Hancock County METRICH Unit opened 173 new cases in 2010, while closing out 121 cases.

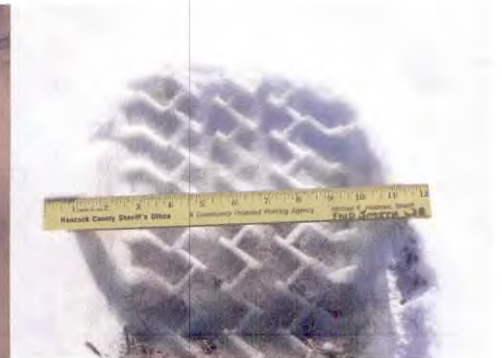
Testing for marijuana



Confiscated drug items



Measuring tire print in the snow



Enforcement

K-9 Units

Our K-9 units remain active and train regularly. Our K-9 units are Becky and handler Deputy Fred Smith and Kevin and handler Deputy Tom Miller.

2010 Highlight

On Sunday, March 7, 2010, Deputy Miller & K9 Kevin located drugs and cash on two males on a traffic stop on US.68 at Western Ave. The males were traveling from Michigan to West Virginia in a rental vehicle. The drugs confiscated were 119 (80mg) and 60 (20mg) Oxycontin with a street value of around \$10,700.00. The cash located on the driver totaled \$3,987.



Some interesting impaired driver statistics:

- 1/3 of all drivers arrested/convicted of OVI are repeat offenders.
- On average, someone is killed by a drunk driver every 45 minutes.
- In 2008, an estimated 11,773 people died in drunk driving related

Also of note:

The Records Clerk processed 3,947 reports, fulfilled 1,286 public records requests, and performed 470 local background checks for the public.



Transport Warrant & Civil Division

Transport / Warrant Unit

The Transport/Warrant unit is responsible for transporting prisoners to and from court, other facilities, and medical appointments. T/W also provides courthouse security for all county courts. Warrant tracking is also a function of this office, as is Sex Offender Registration, Concealed Carry Weapon licensing and civilian and juvenile fingerprinting.

Transport/Warrant had 869 adult escorts for court, transported 282 adults to other institutions and took 167 trips transporting 244 juveniles to other facilities in 2010, travelling 32,034 miles over 1,069 hours. T/W personnel spent 2,649 hours providing court security, including Common Pleas, Juvenile, Findlay Municipal Court, and the in-house courtroom for arraignments. This total also includes 2,378 hours at the West Entrance of the Courthouse. A total of 77,369 people went through security at the Courthouse in 2010.

There were 335 Sex Offender registrations. There were also 15 juvenile offenders registered with this office in 2010. The Sheriff's Office issued 363 CCW (Concealed Carry Weapon) permits and performed fingerprints on 43 civilians and 31 juveniles sent from Juvenile Court.

There were 1,107 warrants entered into the system in 2010. The unit archived 1,090 of those warrants, closing out the files.

For a more detailed breakdown of the stats, please refer to the statistical section starting on page 15.



Civil Division

The Civil Division is responsible for processing all paperwork related to civil and criminal court papers, including Sheriff's Sales.

The office received 2,453 civil papers to process, and 2,017 papers were served by the Road Patrol. There were 139 CPO's (Civil Protection Orders) issued by the court and served through the Sheriff's Office

In 2010, the office received 448 Orders of Sale for sale of real property. There were 402 appraisals performed and 274 made it through to sale without being withdrawn. There were no Orders of Execution (sale of property, i.e.: automobiles, boats, house trailers, etc.) that were taken to sale in 2010.

Corrections

The Hancock County Jail opened in 1989 and houses 98 inmates. In 2010, the jail booked 2,2,430 inmates and released 2,440. The highest daily population was 115 and the lowest daily population was 61. The Average Daily Population for 2010 was 95. There were 101 days when the population exceeded the maximum 98 beds.

The jail housed 1,884 males and 546 females. Of the inmates, 496 were incarcerated on felony charges, while 1,866 were misdemeanors. The average length of stay for prisoners was 19 days. The jail served 102,646 meals to prisoners in 2010 for a total cost of \$156,180.

Many services are provided in the jail. They include mental health counseling, Alcoholics Anonymous, GED and literacy classes, parenting classes, money management, art programs and domestic violence classes for both males and females. Mental health services included Alcohol/Drug Interdiction for 165 inmates. 1,114 inmates were referred to one-on-one counseling, and 3 were referred to off-site counseling.

The jail also houses a library. Books are provided by the Findlay-Hancock County Public Library and inmates are allowed to visit the library regularly. Inmates made 2,260 visits and the library issued 3,565 books during the year. Bibles were also issued, 215 for 2010.



Religious services are also available at the jail. 538 inmates attended church services; 245 males and 293 females attended Bible study.

Extensive medical services are provided by our on-site medical personnel. Inmates are also transported to and from doctor visits outside of the facility. Medications are prescribed and provided for inmates as needed. There were 1,106 prescriptions filled, including 542 psychotropic prescriptions filled. The average number of inmates receiving psychotropic meds was 25 per month. Psychotropic drugs are prescribed for various mental health issues.



The inmate worker program, which allows inmates to help non-profit and government entities with physical work, remains active. In 2010, inmates worked 1,041 details outside of the facility, with 405 males and 204 females participating. They also completed 300 car washes for the Sheriff's Office cruisers.

For more detailed statistics on the jail population (ex: age, race, etc.), please see the Statistical Section starting on page 15.

Hancock County Sheriff's Office

Special Units—Volunteer Organizations

Special Deputy Organization

The Special Deputy Organization is comprised of citizens who are trained to assist law enforcement agencies. This organization is responsible for security at the county schools' football and basketball games and the Hancock County Fair. These individuals logged over 3,000 volunteer hours, including hours at the Hancock County Fair, football games and basketball games.

They also provide services for a variety of other special events around the county each year, including the Spring and Fall Craft Shows held at the fairgrounds. Other details included the Flag City Multi-sport Event and various parades and traffic details



Posse

The Posse is a unit of the Special Deputy Organization and is utilized in parades and at the fair. The unit is also available for special duties which might arise where crowd control is an issue. Each certified posse member has had to undergo rigid training with their horse and pass tests to determine that they and their mount are qualified to handle themselves in stressful situations. These volunteers provide their own gear and mount, and participate in all training on their own time and money.



Underwater Search & Recovery Team

This unit is specially trained in underwater search and recovery, and has been utilized many times to search the reservoir, the Blanchard River, and area ponds and streams when the need arises. There are approximately 18 members on the team, including divers, boat crew, boat captain and the land crew.



Bike Patrol

The Bike Patrol provides services in areas where cruisers cannot be utilized. They are also utilized for special events such as parades, 5k runs, and the Balloon Fest. This unit must go through training to learn how to handle their bicycles in all kinds of terrain and situations. They are certified at the end of their training.

In 2010—the patrol added 4 more riders, 2 fully equipped bikes with lights, sirens and equipment bags. There where a lot of miles covered working the Hancock County Fair, Balloon Fest 5K Run, Special Olympics Torch Run and many other activities. The Patrol has a total of 8 bikes and 14 riders.

Bike Patrol training →



Hancock County Sheriff's Office
2010 Statistics
Patrol - General Statistics

Category	Jan	Feb	Mar	Apr	May	Jun	Jul	Aug	Sep	Oct	Nov	Dec	Total
Total Calls for Service	129	111	155	142	161	174	166	176	172	174	137	134	1831
Arrests													
Complaint	2	2	5	1	6	6	0	2	3	3	0	0	30
Crime in Progress	0	0	8	5	5	1	0	5	3	2	1	4	34
Warrant	0	0	0	0	0	1	0	0	0	0	0	0	1
Court Summons / Citation	2	1	5	2	1	1	5	3	0	1	0	0	21
Order of Protection	0	0	0	0	0	0	0	0	0	0	0	0	0
Other	1	1	0	0	3	2	1	0	0	0	1	2	12
Total Arrests	5	4	18	9	15	11	6	10	6	6	2	6	98
Towed Vehicles													
4	9	6	6	5	9	2	2	6	5	1	2	5	56
Alarm Calls													
Business	3	6	6	10	9	13	10	3	6	1	5	4	76
Residential	4	6	10	15	9	10	11	6	6	4	8	5	94
Schools	1	0	0	3	5	1	4	3	2	2	1	2	24
Other County Offices	3	2	3	4	2	3	3	2	0	2	1	2	27
Total Alarm Calls	11	14	19	32	25	27	28	14	14	9	15	13	221
Alarm \$ Billed	\$ 50.00	\$ -	\$ -	\$ -	\$ -	\$ 100.00	\$ 100.00	\$ 250.00	\$ 150.00	\$ -	\$ 150.00	\$ -	\$ 800.00
Alarm \$ Received	\$ 50.00	\$ -	\$ -	\$ -	\$ -	\$ 100.00	\$ -	\$ 350.00	\$ 150.00	\$ -	\$ 150.00	\$ -	\$ 800.00
Patrol Car Stats													
Miles Driven	41,915	41,263	50,262	53,077	52,227	47,239	44,914	49,137	46,024	53,965	49,044	50,239	579,306
Gallons of Gas	2,889.7	2,779.5	3,208.5	3,361.0	3,271.5	3,024.8	2,892.0	3,208.3	2,909.6	3,215.9	3,092.1	3,367.9	37,220.8
MPG	14.50	14.85	15.67	15.79	15.96	15.62	15.53	15.32	15.82	16.78	15.86	14.92	15.56
Total \$ Purchased	\$ 7,060.43	\$ 6,355.53	\$ 7,815.34	\$ 8,418.16	\$ 8,159.87	\$ 7,053.72	\$ 7,083.96	\$ 7,545.28	\$ 6,833.53	\$ 7,885.75	\$ 7,757.99	\$ 8,846.17	\$ 90,815.73
Price per Gallon	\$ 2.443	\$ 2.287	\$ 2.436	\$ 2.505	\$ 2.494	\$ 2.332	\$ 2.450	\$ 2.352	\$ 2.349	\$ 2.452	\$ 2.509	\$ 2.627	\$ 2.440

Hancock County Sheriff's Office
2010 Statistics
Investigative Statistics

Category	Jan	Feb	Mar	Apr	May	Jun	Jul	Aug	Sep	Oct	Nov	Dec	Total
<u>Criminal Investigations</u>													
Assigned Cases	8	7	13	5	8	11	9	6	3	8	9	5	92
Cleared Cases	6	7	10	4	7	7	9	4	0	6	5	8	73
# of Arrests	2	0	7	4	7	2	2	4	3	3	1	1	36
<u>Metrich - Hancock County</u>													
# of Defendants	6	10	11	12	10	9	4	66	14	12	22	22	198
New Cases	7	10	13	17	12	10	5	16	15	18	24	26	173
Closed Cases	11	7	15	1	0	8	7	63	6	0	0	3	121

In August 2010, indictments were handed down in a large drug investigation, accounting for the large number of defendants and closed cases in August for the Metrich Unit.

Hancock County Sheriff's Office
2010 Statistics
Enforcement - Incident Reports

Township & Village
Incident Reports

	Jan	Feb	Mar	Apr	May	Jun	Jul	Aug	Sep	Oct	Nov	Dec	Total
Allen	18	20	23	30	29	24	24	19	33	28	33	26	307
Mortimer	0	0	0	0	1	0	1	2	0	1	0	0	8
Van Buren	1	3	4	6	2	2	2	2	4	1	4	2	33
Amanda	10	5	3	5	5	6	5	6	3	4	5	2	59
Vanlue	3	5	5	1	4	5	5	6	4	6	3	2	49
Biglick	12	5	7	12	9	5	5	10	5	5	9	7	91
West Independence	0	0	0	0	1	0	0	0	1	0	0	0	2
Blanchard	6	7	3	4	5	8	3	7	7	5	3	3	61
Benton Ridge	4	1	4	7	3	3	3	2	4	3	1	2	37
Cass	7	6	9	10	8	16	8	4	15	16	7	5	111
Delaware	13	8	18	14	10	8	6	12	13	7	8	4	121
Mt. Blanchard	4	4	5	7	2	12	12	9	8	8	6	3	80
Eagle	6	9	8	10	4	12	8	9	15	10	8	4	103
Findlay	20	8	21	21	16	15	17	16	28	14	15	12	203
Jackson	5	8	8	9	8	18	9	7	6	5	12	5	100
Houcktown	0	1	2	0	0	0	0	0	0	0	0	0	3
Liberty	51	45	52	68	68	63	72	77	87	54	48	64	749
Madison	2	5	5	5	7	4	6	6	10	8	8	8	74
Arlington	6	6	14	9	14	15	15	12	12	22	13	13	151
Williamstown	0	0	0	0	1	7	1	2	0	0	0	1	12
Marion	11	17	11	23	32	16	18	18	33	23	24	24	250
Orange	1	7	10	4	2	5	9	12	5	14	8	5	82
Pleasant	7	6	4	5	7	8	10	5	8	11	6	3	80
McComb	3	4	4	2	6	5	1	3	6	4	9	7	54
Shawtown	0	0	0	0	0	0	0	1	0	0	0	0	1
Portage	4	6	4	5	1	6	4	1	3	4	3	2	43
Union	5	3	7	10	7	9	6	15	9	8	10	4	93
Mt. Cory	1	1	0	0	0	1	4	2	0	2	1	2	14
Rawson	1	1	5	9	12	12	11	13	7	5	1	4	81
Van Buren	1	8	5	3	4	2	3	8	7	6	9	2	58
Jenera	1	1	3	7	0	1	0	4	7	1	3	2	30
New Stark	0	0	0	0	0	0	0	0	1	0	0	1	2
Washington	9	13	10	4	6	4	9	8	6	6	8	10	93
Arcadia	1	2	7	5	8	4	8	5	9	10	6	4	69
Other	5	5	1	3	3	6	11	4	6	5	5	8	62
Totals	218	220	262	298	285	302	296	307	362	296	276	244	3366

**Hancock County Sheriff's Office
2010 Statistics
Enforcement - Accident Reports**

Category	Jan	Feb	Mar	Apr	May	Jun	Jul	Aug	Sep	Oct	Nov	Dec	Total
Property Damage	71	64	42	42	49	31	27	44	69	83	101	109	732
Fatal Accidents	0	1	0	0	0	0	0	0	0	1	0	0	2
Injuries	11	8	3	5	9	8	8	12	10	10	6	21	111
Total Accidents	82	73	45	47	58	39	35	56	79	94	107	130	845
# of Fatalities	0	1	0	0	0	0	0	0	0	1	0	0	2
Speed Related	7	9	5	3	6	4	6	11	10	8	4	16	89
Deer crashes (included in above totals)	17	9	17	22	11	12	10	3	31	51	74	34	291
Warnings/Verbal-Written	54	84	135	123	96	89	87	115	107	172	127	131	1320
Alcohol Related	0	2	1	2	6	2	2	0	4	1	2	4	26
Average BAC Test	0.13%	0.15%	0.16%	0.14%	0.17%	0.15%	0.17%	0.15%	0.15%	0.12%	0.17%	1.60%	0.150%
BAC Test Refusals	1	10	9	5	6	2	0	0	5	7	4	6	55
Township & Village													
Allen	6	4	3	3	6	2	3	7	7	11	8	17	77
Mortimer	0	0	0	0	0	0	0	0	0	0	0	0	0
Van Buren	1	0	0	0	0	0	0	0	1	0	0	1	3
Amanda	2	0	1	2	3	1	0	1	1	5	0	5	21
Vanlue	0	0	0	0	1	0	0	1	0	0	0	0	2
Biglick	4	5	2	2	0	4	1	1	5	6	6	5	41
West Independence	0	0	0	0	0	0	0	0	0	0	0	0	0
Blanchard	7	8	6	2	2	3	2	1	1	7	7	7	53
Benton Ridge	1	0	0	0	2	0	0	1	0	0	0	0	4
Cass	4	6	2	6	1	2	4	2	3	3	8	9	50
Delaware	3	2	0	3	1	4	4	2	1	9	5	2	36
Mt. Blanchard	0	0	0	0	2	0	0	0	0	0	0	0	2
Eagle	4	4	2	3	4	4	4	3	3	5	6	4	46
Findlay	1	0	0	0	1	1	0	0	2	0	0	0	5
Jackson	5	3	5	3	4	1	3	3	3	2	9	2	43
Houcktown	0	0	0	0	0	0	0	0	0	0	0	0	0
Liberty	13	15	8	4	6	2	1	6	11	12	18	24	120
Madison	2	1	1	0	3	1	0	2	4	4	3	6	27
Arlington	0	1	1	1	0	1	3	2	7	2	2	4	24
Williamstown	0	0	0	0	0	0	0	0	0	0	0	0	0
Marion	16	8	8	8	8	7	6	11	18	12	17	16	135
Orange	1	3	0	1	2	1	2	3	2	1	1	7	24
Pleasant	4	2	1	4	1	2	0	3	3	1	6	8	35
McComb	0	0	0	0	1	0	0	1	0	1	0	0	3
Shawtown	0	0	0	0	0	0	0	0	0	0	0	0	0
Portage	2	2	1	3	2	0	2	1	0	4	5	1	23
Union	1	1	0	2	4	0	0	0	3	2	2	5	20
Mt. Cory	0	0	0	0	0	0	0	0	0	0	0	0	0
Rawson	0	0	0	0	0	0	0	0	0	1	0	0	1
Van Buren	3	0	0	0	2	0	0	1	2	1	0	0	12
Jenera	0	1	0	0	0	0	0	0	0	0	0	0	1
New Stark	0	0	0	0	0	0	0	0	0	0	0	0	0
Washington	5	4	1	1	2	3	2	5	2	5	5	6	41
Arcadia	1	1	1	1	1	0	0	3	0	1	0	1	10
Other	1	2	0	0	0	0	0	0	0	0	0	0	3
Totals	87	73	43	49	59	39	37	60	79	95	110	131	862

**Hancock County Sheriff's Office
2010 Statistics
Enforcement - Citations**

Category	Jan	Feb	Mar	Apr	May	Jun	Jul	Aug	Sep	Oct	Nov	Dec	Total
Violation Summary													
Speed	35	62	115	143	114	98	87	99	98	88	95	71	1105
Seat Belts	1	2	7	8	8	3	4	4	4	5	5	1	52
Child Restraints	0	0	0	2	0	0	1	1	0	0	0	0	4
OMVI	5	21	16	11	15	7	7	7	11	12	8	13	133
License Violations	13	15	13	13	14	14	12	13	17	11	10	8	153
Intersection Violations	6	3	17	12	15	6	11	9	9	11	13	12	124
Other Moving	35	48	23	22	28	17	8	20	23	18	25	48	315
Non-moving	6	6	13	11	11	8	9	13	4	11	10	10	112
Total Violations	101	157	204	222	205	153	139	166	166	156	166	163	1998

**Citation Summary
Township & Village**

Allen	11	7	9	8	17	7	2	12	6	5	10	11	105
Mortimer	0	0	0	0	0	0	0	0	2	0	0	0	2
Van Buren	1	4	2	6	6	4	7	15	0	6	3	1	55
Amanda	0	0	4	3	5	2	0	1	2	1	7	3	28
Vanlue	0	0	1	2	2	0	0	0	0	1	0	0	6
Biglick	3	9	10	14	15	10	5	10	4	6	6	15	107
West Independence	0	0	0	0	0	0	0	0	0	0	0	0	0
Blanchard	6	7	19	12	15	15	16	12	5	11	7	3	128
Benton Ridge	1	0	0	0	0	0	0	0	0	0	4	1	6
Cass	3	10	8	9	7	5	2	6	8	0	6	5	69
Delaware	4	7	3	14	3	10	2	3	2	5	4	0	57
Mt. Blanchard	0	0	0	1	3	0	0	0	1	0	0	0	5
Eagle	1	3	7	16	8	6	8	6	5	15	7	10	92
Findlay	8	8	12	7	9	7	6	11	5	13	10	20	116
Jackson	5	7	15	21	7	11	8	5	11	10	20	5	125
Houcktown	0	0	0	0	0	0	0	0	0	0	0	0	0
Liberty	11	18	20	14	24	15	11	14	26	18	18	18	207
Madison	4	8	4	5	7	2	6	3	7	9	6	8	69
Arlington	0	2	6	3	3	1	3	1	6	3	3	4	35
Williamstown	0	0	0	0	0	0	0	0	0	0	0	0	0
Marion	10	14	18	18	19	12	15	13	17	9	13	10	168
Orange	4	6	8	10	6	8	6	12	4	2	6	15	87
Pleasant	4	2	1	2	2	2	0	3	3	2	2	6	29
McComb	0	0	1	0	3	1	1	0	0	1	0	0	7
Shawtown	0	0	0	0	0	0	0	0	0	0	0	0	0
Portage	3	8	6	10	3	2	1	2	3	2	4	2	46
Union	2	3	6	10	6	1	3	5	4	4	3	1	48
Mt. Cory	0	0	0	0	0	0	0	0	1	0	0	0	1
Rawson	0	0	0	0	0	1	0	0	1	0	0	0	2
Van Buren	3	5	0	2	1	2	1	3	2	1	0	2	22
Jenera	0	1	0	0	0	1	0	0	0	0	0	0	2
New Stark	0	0	0	0	0	0	0	0	0	0	0	0	0
Washington	6	5	11	7	7	10	9	7	4	6	4	6	82
Arcadia	1	2	3	2	4	0	0	6	3	1	3	1	26
Other	1	1	0	1	1	1	3	2	2	1	1	1	15
Total Citations	92	137	174	197	183	136	115	152	134	132	147	148	1747

Hancock County Sheriff's Office
2010 Statistics
Communications

Category	Jan	Feb	Mar	Apr	May	Jun	Jul	Aug	Sep	Oct	Nov	Dec	Total
<u>Emergency Calls</u>													
911 Calls Received	814	867	785	636	841	885	730	799	757	790	892	857	9653
2424	3675	3795	3679	3558	4076	4190	3771	3799	3650	3602	3488	3754	45037
2425	472	613	483	435	557	670	532	501	465	472	498	511	6209
2426	408	398	362	211	261	383	234	275	271	267	212	233	3515
Total Emergency	5369	5673	5309	4840	5735	6128	5267	5374	5143	5131	5090	5355	64414
<u>Administrative</u>													
7097 - Main line	1848	3260	1885	1787	1742	1796	1618	1661	1651	1762	1683	1687	22380
7098 - Rollover line	512	515	507	486	752	457	439	489	430	473	401	912	6373
All Transport Warrant	1207	1228	1427	1095	916	1039	1056	1234	1329	1118	1019	1166	13834
7239 - Civil Process	549	564	559	598	460	621	565	513	506	464	354	341	6094
7251 - Records	638	652	688	666	617	603	633	713	692	650	556	606	7714
Total Administrative	4754	6219	5066	4632	4487	4516	4311	4610	4608	4467	4013	4712	56395
<u>Corrections</u>													
7202 - Main Line	3017	2639	3135	3015	2692	2615	2919	2754	3345	3110	2964	2553	34758
7203 - Rollover Line	2271	2084	2673	2459	2180	2270	2389	2176	2650	2241	2367	2196	27956
Total Corrections	5288	4723	5808	5474	4872	4885	5308	4930	5995	5351	5331	4749	62714
Total Calls for Agency	15411	16615	16183	14946	15094	15529	14886	14914	15746	14949	14434	14816	183523

Hancock County Sheriff's Office
2010 Statistics
Transport Warrant & Civil Unit

Category	Jan	Feb	Mar	Apr	May	Jun	Jul	Aug	Sep	Oct	Nov	Dec	Total
Transports													
Adult Escorts	104	67	85	79	67	74	68	57	77	70	71	50	869
Adult Inst. Transports	10	22	23	33	18	9	20	16	26	13	18	17	225
# Adults Transported	10	27	32	34	29	14	26	19	28	17	24	22	282
Adult Transport Time	24.25	52.00	55.50	74.25	66.00	28.00	60.25	44.00	58.00	35.00	64.75	40.25	602.25
Mileage	1,130	2,263	2,363	2,985	1,987	1,145	2,022	1,874	1,739	1,177	1,964	1,602	22,251
Adult Transport Fees	\$ 2,575.00	\$ 3,030.00	\$ 4,711.00	\$ 5,523.00	\$ 2,605.00	\$ 2,298.00	\$ 3,150.00	\$ 2,416.00	\$ 4,186.00	\$ 2,357.00	\$ 2,765.50	\$ 2,791.00	\$ 38,407.50
Juvenile Transport Trips	4	15	5	18	11	15	17	11	21	29	11	10	167
# of Juveniles Transported	17	16	15	24	14	34	17	15	32	37	13	10	244
Juvenile Transport Time	11.00	17.75	17.00	165.25	17.50	23.25	23.50	18.00	31.50	48.50	17.75	20.25	411.25
Mileage	668	750	555	1,033	551	730	890	600	1,002	1,710	600	694	9,783
Juvenile Transport Fees	\$ 854.00	\$ 854.00	\$ 762.00	\$ 618.00	\$ 793.00	\$ 2,105.00	\$ 1,045.00	\$ 974.00	\$ 1,651.00	\$ 2,456.00	\$ 715.00	\$ 733.00	\$ 13,560.00
Probate Transports	0	2	5	0	0	0	1	3	2	0	0	0	13
Probate Transport time	0.00	11.00	23.25	0.00	0.00	0.00	2.75	10.00	8.75	0.00	0.00	0.00	55.75
Mileage	0	95	106	0	0	0	86	229	102	0	0	0	618
Courthouse Security (Hours)													
HPCP	4.25	7.75	29.75	16.75	11.50	12.25	10.50	13.75	13.25	22.25	37.75	24.25	204.00
West Entrance	185.00	163.40	229.50	195.50	192.50	211.50	210.00	212.25	204.00	188.25	187.75	199.25	2,378.90
Adult Probation	0.00	0.00	0.25	0.00	0.00	0.00	0.00	0.00	0.00	0.00	0.00	0.00	0.25
BMV/ROC/SCEA	0.00	0.00	0.00	0.00	0.00	0.00	0.50	0.00	0.00	0.00	0.00	0.00	0.50
Juvenile Court	0.00	1.75	3.00	6.50	2.25	1.00	3.00	0.25	1.75	0.50	0.00	0.75	20.75
FMC	0.00	4.00	2.00	1.00	3.00	4.50	0.00	2.50	2.50	2.25	1.00	1.50	24.25
In House Court	2.25	1.50	2.50	1.50	0.50	2.25	2.50	1.75	1.50	1.50	0.75	1.75	20.25
Total Security Hours	191.50	178.40	267.00	221.25	209.75	231.50	226.50	230.50	223.00	214.75	227.25	227.50	2,648.90
West Entrance Traffic	4,149	5,385	7,953	6,970	6,489	6,976	8,479	7,187	5,869	6,468	6,317	5,127	77,369
Extraditions													
# of Extraditions	0	0	0	0	0	0	0	0	0	0	0	0	0
Extradition Transport Time	0.00	0.00	0.00	0.00	0.00	0.00	0.00	0.00	0.00	0.00	0.00	0.00	0.00
Mileage	0	0	0	0	0	0	0	0	0	0	0	0	0
Extradition Fees	\$ -	\$ -	\$ -	\$ -	\$ -	\$ -	\$ -	\$ -	\$ -	\$ -	\$ -	\$ -	\$ -

Hancock County Sheriff's Office
2010 Statistics
Transport Warrant & Civil Unit

Category	Jan	Feb	Mar	Apr	May	Jun	Jul	Aug	Sep	Oct	Nov	Dec	Total
Warrants													
Warrants Entered	89	88	97	121	81	103	89	87	88	88	88	88	1107
Warrants Archived	84	53	114	113	65	75	103	106	101	103	91	82	1090
Warrant Fees	\$ 451.00	\$ 382.00	\$ 739.00	\$ 1,745.00	\$ 783.00	\$ 947.00	\$ 2,365.00	\$ 2,379.00	\$ 1,974.00	\$ 2,094.00	\$ 1,598.50	\$ 2,070.00	\$ 17,527.50
Unentered Warrants Recalled	1	5	7	6	2	0	6	7	9	6	30	9	88
Recalled Warrant Fees	\$ 390.00	\$ 600.00	\$ 801.00	\$ 500.00	\$ 520.00	\$ 360.00	\$ 560.00	\$ 810.00	\$ 660.00	\$ 540.00	\$ 760.00	\$ 280.00	\$ 6,781.00
Sex Offender Registration													
Sorn Hours	13	16	26	31	12	21	37	24	13	22	17	47	279
Adult Registrations:													
Tier I	5	8	15	4	3	8	7	13	11	10	9	18	111
Tier II	9	11	6	10	13	16	9	13	4	5	3	2	101
Tier III	13	5	13	12	6	12	18	9	6	15	9	5	123
Juvenile Registrations:													
Tier I	0	0	1	0	0	0	0	0	0	0	0	0	1
Tier II	0	0	0	0	0	0	0	0	0	0	0	0	0
Tier III	2	0	4	3	0	0	1	1	0	2	0	1	14
Total SORN Registrations	29	24	39	29	22	36	35	36	21	32	21	26	350
Concealed Carry Permits													
CCW Hours	27.5	26.75	41.25	30.5	22.25	16.25	17.25	32	26	22.5	18	20.25	300.5
CCW Permits Issued	39	31	51	44	32	19	15	39	32	17	22	22	363
Civilian Fingerprints													
Webcheck Hours	3.25	0.5	1.25	0	0	3.25	0	1.5	0	5.75	0.5	0.5	16.5
Fingerprints Rolled	8	2	4	0	0	3	4	1	0	2	11	8	43
Juvenile Fingerprints													
	2	3	1	3	1	5	1	2	2	1.5	3	6.25	30.75
Civil Process													
Sheriff's Sales Received	40	42	47	30	59	47	43	46	28	36	11	19	448
Appraisals	42	43	44	26	43	49	29	48	23	27	15	13	402
Sales Withdrawn	6	21	15	16	13	19	17	20	17	16	20	3	183
Sales Conducted	12	27	28	25	25	37	28	29	23	17	11	12	274
Chattel Sales	0	0	0	0	0	0	0	0	0	0	0	0	0
Execution Sales	0	0	0	0	0	0	0	0	0	0	0	0	0
Civil Papers Received	190	187	221	208	230	204	232	231	225	175	192	158	2453
Civil Papers Served	179	138	189	175	189	167	201	181	174	149	166	109	2017
CPO's Served	11	6	19	15	9	17	14	10	9	8	14	7	139

Hancock County Sheriff's Office
2010 Statistics
Corrections - Population

Category	Jan	Feb	Mar	Apr	May	Jun	Jul	Aug	Sep	Oct	Nov	Dec	Total
# of Prisoners Booked	192	192	231	210	222	192	218	198	225	179	192	179	2,430
# of Prisoners Released	184	186	227	222	224	189	216	203	226	179	196	188	2,440
Fed'l Contracted Prisoners Held	0	0	0	0	0	0	0	0	0	0	0	0	0
Contracted Prisoners Held (Excluding Findlay Police Dept.)	0	0	0	0	0	0	0	0	0	0	0	0	0
Highest Population	106	100	115	115	105	104	104	99	101	104	108	92	115
Lowest Population	89	84	94	87	90	84	85	84	85	89	79	61	61
Average Daily Population	98	93	103	105	95	95	95	92	94	95	93	80	95
# of days Exceeded (98) Population	12	2	28	25	3	6	6	3	4	5	7	0	101
Gender													
Male	149	155	183	169	175	155	172	152	173	134	142	125	1,884
Female	43	37	48	41	47	37	46	46	52	45	50	54	546
Total	192	192	231	210	222	192	218	198	225	179	192	179	2,430
Felons													
Male	32	21	47	40	27	32	29	37	30	38	35	26	394
Female	9	7	10	10	8	8	6	9	9	8	9	9	102
Total	41	28	57	50	35	40	35	46	39	46	44	35	496
Misdemeanors													
Male	112	129	130	126	141	114	140	107	141	93	100	85	1,418
Female	34	31	38	31	37	33	38	43	40	36	42	45	448
Total	146	160	168	157	178	147	178	150	181	129	142	130	1,866
Length of Stay													
Highest	150	176	177	117	378	337	162	157	180	55	97	180	
Lowest	2	2	3	3	3	3	3	3	2	2	2	3	
Average	11	39	18	11	32	21	18	14	27	6	15	12	19
DWI/OMVI	35	57	46	38	60	36	49	44	43	34	35	39	516
Highest	0	0	24	20	12	31	135	0	56	0	30	9	
Lowest	5	0	3	10	0	0	3	10	3	4	0	0	
Average	0	0	2	2	0	1	5	0	3	4	0	0	
DUS	3	2	8	4	1	3	4	2	5	4	3	5	44
Highest	139	60	30	19	16	10	39	0	60	0	20	10	
Lowest	5	29	25	0	2	0	5	0	2	0	0	0	
Average	7	4	4	0	1	0	3	0	3	0	0	0	
Domestic Violence	9	7	15	7	14	16	17	17	33	8	9	12	164

Hancock County Sheriff's Office
2010 Statistics
Corrections - Population

Category	Jan	Feb	Mar	Apr	May	Jun	Jul	Aug	Sep	Oct	Nov	Dec	Total
Age Groups													
Under 20	30	22	39	27	28	31	30	34	39	27	27	25	359
21 - 24	46	40	47	49	46	30	44	32	46	37	45	28	490
25 - 29	33	45	40	42	42	36	47	40	35	40	36	35	471
30 - 39	46	38	56	56	49	43	59	54	53	37	50	55	596
40 - Over	36	47	49	36	57	51	38	37	52	38	34	36	511
Race													
White	143	134	163	144	160	148	173	147	166	133	140	148	1,799
Black	24	30	42	37	39	21	24	34	37	20	29	19	356
Hispanic	22	25	26	27	21	21	18	13	21	24	21	10	249
Asian	2	3	0	1	2	1	2	2	1	1	0	1	16
American Indian	0	0	0	1	0	0	1	0	0	0	0	1	3
Iranian	0	0	0	0	0	0	0	1	0	1	2	0	4
Marital Status													
Married	31	36	37	40	39	34	44	28	34	25	27	34	409
Single	136	131	160	149	151	135	151	145	151	126	141	115	1,691
Divorced	23	25	30	19	31	21	22	22	35	24	22	28	302
Widowed	1	0	4	2	1	1	1	2	5	4	2	2	25
Offenses													
Violent	7	6	5	16	4	14	7	18	12	10	5	2	106
Property	14	6	28	14	19	16	14	21	13	15	16	14	190
Drug	30	13	34	43	28	22	22	23	27	27	34	27	330
Alcohol	55	74	56	50	76	52	69	57	62	50	54	48	703
Fines & Costs	0	1	4	1	2	7	5	1	0	1	0	0	22
Public Order Offenses	2	4	4	4	5	2	5	2	2	0	6	4	40
Traffic	27	37	31	29	31	23	38	27	28	25	27	27	350
Parole	1	1	2	0	1	5	1	4	1	0	2	1	19
Child Support	4	8	8	11	9	9	9	5	12	9	6	14	104
Miscellaneous	39	34	35	32	34	29	34	21	32	31	29	25	375
Total Number of Recidivisms	3	5	4	6	6	5	1	0	3	2	6	11	52
Meal Service													
# of Prisoner Meals Served	8,103	7,714	10,705	8,834	7,915	9,822	7,913	7,661	9,766	7,935	7,999	8,279	102,646

Hancock County Sheriff's Office
2010 Statistics
Corrections - Program Participation

Category	Jan	Feb	Mar	Apr	May	Jun	Jul	Aug	Sep	Oct	Nov	Dec	Total
Mental Health													
Alcohol/Drug Interdiction - Male	20	11	18	25	17	19	38	12	5	0	0	0	165
Alcohol/Drug Interdiction - Female	0	0	0	0	0	0	0	0	0	0	0	0	0
Emotions Management	0	0	0	0	0	0	0	0	0	0	0	0	0
# Referred for One on One Counseling	68	82	116	98	85	92	123	86	96	93	93	82	1,114
Off-Site Mental Health Counseling	1	0	2	0	0	0	0	0	0	0	0	0	3
General													
Alcoholics Anonymous	43	33	46	69	41	32	69	46	49	40	38	35	541
GED	15	8	23	24	18	18	0	3	5	19	7	1	141
Literacy	3	0	0	0	4	0	0	0	0	0	0	0	7
Parenting Classes	0	0	0	0	0	0	0	0	0	0	0	0	0
Coaching Clinic	22	24	104	48	89	62	63	18	62	51	94	45	682
Money Management Class	0	0	0	0	0	0	0	0	0	0	0	0	0
Art Program	7	7	2	3	5	3	2	0	0	14	4	3	50
Domestic Violence Class (Males)	0	0	0	0	0	0	0	0	0	0	0	0	0
Domestic Violence Class (Females)	0	0	0	0	0	0	0	0	0	0	0	0	0
Library													
Number of Visits	164	120	252	267	209	112	189	213	183	187	228	136	2,260
Number of Books Issued	275	194	363	413	333	172	244	310	268	312	430	251	3,565
Number of Bibles Issued	18	22	22	28	16	6	15	25	28	15	9	11	215
Number of Games Issued	0	0	0	0	0	0	0	0	0	0	0	0	0
Religious													
Bible Study (Males)	26	19	22	23	19	16	25	24	27	11	14	19	245
Bible Study (Females)	16	7	11	31	31	19	30	46	31	23	18	30	293
Protestant Church Services	35	57	54	137	82	71	68	67	63	58	59	55	806
Catholic Church Services	0	0	0	0	0	0	0	0	0	0	0	0	0

Hancock County Sheriff's Office
2010 Statistics
Corrections - Program Participation

Category	Jan	Feb	Mar	Apr	May	Jun	Jul	Aug	Sep	Oct	Nov	Dec	Total
Medical													
Receiving Screens	170	173	216	190	196	179	195	192	208	169	178	162	2,228
Medical Requests	60	52	106	95	89	86	95	86	90	86	68	56	969
Phone Calls to Doctor	10	7	5	9	6	7	4	5	3	1	7	9	73
Office Transports (TW)	11	18	10	15	9	11	16	9	15	7	12	10	143
Prison / Jail Transports	8	18	12	18	13	7	11	11	12	11	15	9	145
# Seen by Facility Doctor	44	52	74	62	66	70	57	88	68	81	68	50	780
# Seen by Facility Nurse	66	53	52	70	67	66	92	69	73	63	76	70	817
# Seen by Officer	32	30	43	26	21	29	30	33	40	33	44	51	412
Responded to Accidents	2	2	2	3	3	5	2	1	1	2	1	0	24
Number of TB Tests	28	24	31	43	24	24	39	40	40	49	20	34	396
TB Tested Positive	0	0	0	0	0	0	0	0	0	0	0	0	0
Daily Count Diabetics	32	24	29	20	29	57	58	14	42	41	67	67	480
Number of Lab Tests	2	1	3	3	2	2	5	4	1	6	2	3	34
Mental Health Requests	30	30	44	38	29	41	51	57	56	45	55	39	515
Prescreener Called	9	3	8	2	5	2	4	6	7	16	6	4	72
# of Prescriptions Filled	56	46	122	114	104	117	85	131	112	103	70	46	1,106
# of Psychotropic Prescriptions Filled	22	11	48	51	57	61	43	60	51	44	51	43	542
Avg# Inmates Receiving Psychotropic Meds	26	27	29	27	24	25	24	24	24	22	25	24	25
# Inmates on Special Diets	59	43	67	47	20	41	59	23	44	50	68	66	587
# Off-Site Long Term Mental Health Trtmt	0	0	0	0	1	1	0	0	0	0	0	1	3
(Northcoast Behavioral Center - Toledo)													
# Off-Site Medical Care	2	0	1	3	4	5	7	3	0	2	3	1	31
(ER, Doctor's Office, Dentist)													

Inmate Worker Program

# of Male Prisoners	44	38	26	33	42	32	19	26	39	43	33	30	405
# of Female Prisoners	13	11	14	16	24	21	25	22	10	20	12	16	204
# of Outside Work Details	60	70	74	98	95	117	108	85	82	90	75	87	1,041
# of Car Washes/Waxes Completed	10	11	32	38	18	17	23	43	12	40	32	24	300

Hancock County Sheriff's Office
2010 Statistics
Miscellaneous Administrative Statistics

Category	Jan	Feb	Mar	Apr	May	Jun	Jul	Aug	Sep	Oct	Nov	Dec	Total
Records													
Reports Processed	339	287	308	295	258	267	398	378	439	270	330	378	3,947
Public Record Requests	147	109	92	120	139	78	119	120	115	80	86	81	1,286
Local Background Checks	40	58	39	50	49	24	41	42	50	21	19	37	470

FINANCIAL SUMMARY

General Fund Receipts

Fees & Fines Collected	\$ 11,327.42	\$ 12,197.17	\$ 20,387.88	\$ 17,282.15	\$ 11,143.43	\$ 14,731.43	\$ 14,840.32	\$ 11,530.82	\$ 16,620.96	\$ 22,383.11	\$ 12,555.03	\$ 13,323.73	\$ 178,323.45
Security Contracts - General Fund	\$ 2,228.93	\$ 50.65	\$ 1,500.08	\$ 2,664.56	\$ 1,514.33	\$ 4,948.47	\$ 2,573.54	\$ 2,722.48	\$ 2,672.83	\$ 2,532.16	\$ 2,796.96	\$ 3,756.86	\$ 29,961.85
Prisoner Housing	\$ 61,583.36	\$ 66,066.34	\$ 113,507.68	\$ -	\$ 60,567.66	\$ 130,407.88	\$ -	\$ 151,553.39	\$ -	\$ 66,658.33	\$ 59,566.65	\$ 99,301.29	\$ 809,212.58
Resident Housing	\$ 160.00	\$ 300.00	\$ 250.00	\$ 120.00	\$ 180.00	\$ 100.00	\$ 75.00	\$ 55.00	\$ 485.00	\$ 160.00	\$ 30.00	\$ 55.00	\$ 1,970.00
Other	\$ 9,596.79	\$ 8,383.37	\$ 14,103.08	\$ 5,522.00	\$ 3,143.62	\$ 3,982.31	\$ 2,614.43	\$ 2,163.93	\$ 10,387.93	\$ 3,373.42	\$ 1,000.00	\$ 6,387.52	\$ 70,658.40
Total to General Fund	\$ 84,896.50	\$ 86,997.53	\$ 149,748.72	\$ 25,588.71	\$ 76,549.04	\$ 154,170.09	\$ 20,103.29	\$ 168,025.62	\$ 30,166.72	\$ 95,107.02	\$ 75,948.64	\$ 122,824.40	\$ 1,090,126.28
Grant Funds Received	\$ 7,191.46	\$ 1,651.19	\$ 1,932.19	\$ 11,583.00	\$ 2,547.00	\$ 3,990.01	\$ 6,283.93	\$ -	\$ 40,423.01	\$ 9,566.01	\$ -	\$ 8,722.72	\$ 93,890.52
Security Contracts - Special Fund	\$ 5,424.00	\$ 5,435.05	\$ 5,424.00	\$ 5,296.00	\$ 6,620.00	\$ 5,296.00	\$ 5,296.00	\$ 6,620.00	\$ 5,287.73	\$ 5,296.00	\$ 6,620.00	\$ 5,296.00	\$ 67,910.78
Special Fund Receipts	\$ 12,658.63	\$ 9,823.08	\$ 19,760.01	\$ 9,794.04	\$ 7,356.78	\$ 8,126.06	\$ 6,285.61	\$ 6,797.23	\$ 8,557.58	\$ 6,829.89	\$ 6,738.97	\$ 22,794.17	\$ 125,522.05
Total Receipts	\$ 110,170.59	\$ 103,906.85	\$ 176,864.92	\$ 52,261.75	\$ 93,072.82	\$ 171,582.16	\$ 37,968.83	\$ 181,442.85	\$ 84,435.04	\$ 116,798.92	\$ 89,307.61	\$ 159,637.29	\$ 1,377,449.63

General Fund Expenditures

General Office	\$ 68,621.33	\$ 30,478.41	\$ 33,425.47	\$ 45,639.21	\$ 29,062.44	\$ 31,266.22	\$ 26,197.14	\$ 25,846.58	\$ 42,657.43	\$ 36,568.14	\$ 26,141.52	\$ 25,244.07	\$ 421,147.96
Enforcement	\$ 172,625.33	\$ 175,183.96	\$ 159,039.09	\$ 237,009.87	\$ 182,912.98	\$ 174,368.65	\$ 177,611.61	\$ 174,844.99	\$ 175,572.16	\$ 255,041.91	\$ 213,257.78	\$ 175,636.32	\$ 2,273,104.65
Transport Warrant	\$ 24,175.15	\$ 27,950.72	\$ 32,829.53	\$ 35,171.70	\$ 27,103.96	\$ 23,843.38	\$ 24,053.59	\$ 23,737.45	\$ 23,805.84	\$ 33,820.16	\$ 25,851.24	\$ 30,388.61	\$ 332,731.33
Total Enforcement	\$ 266,421.81	\$ 233,613.09	\$ 225,294.09	\$ 317,820.78	\$ 239,079.38	\$ 229,478.25	\$ 227,862.34	\$ 224,429.02	\$ 242,035.43	\$ 325,430.21	\$ 265,250.54	\$ 231,269.00	\$ 3,026,983.94
Corrections	\$ 191,029.09	\$ 179,082.46	\$ 178,623.17	\$ 250,664.24	\$ 193,637.22	\$ 183,446.40	\$ 192,405.85	\$ 164,337.70	\$ 194,443.60	\$ 262,916.70	\$ 187,209.86	\$ 172,618.11	\$ 2,350,414.40
ROC	\$ -	\$ 60.00	\$ -	\$ 230.00	\$ -	\$ 100.00	\$ -	\$ -	\$ -	\$ -	\$ -	\$ -	\$ 390.00
Total Gen'l Fund Expenditures	\$ 456,450.90	\$ 412,755.55	\$ 403,917.26	\$ 568,715.02	\$ 432,716.60	\$ 413,024.55	\$ 420,268.19	\$ 388,766.72	\$ 436,479.03	\$ 588,346.91	\$ 452,460.40	\$ 403,887.11	\$ 5,377,788.34