

The Villager

The community magazine for the parishes of Martley and Wichenford

Volume 18 No. 8

January 2009

Editor: Michelle Higgins (01886888344)
Editorial Team: *Martley* Alan Boon (01886 888527), Nellie Bradley (01886 888339), Kate King (01886 888439), Beth Williams (01886 888273) *Wichenford* Janet Andrews (01886 888303), Sheila Richards (01886 888378)
Advertising: Aileen Parker. 01886 888456
Distribution: *Martley* George & June Lawrence (01886 821064) *Wichenford* Bill & Jo Root (01886 888585)

Contact The Villager: Leave articles at Martley Post Office, call Janet or Sheila (Wichenford) or email the Editor at editor@martley.org
Opinions expressed by contributors are not necessarily those of The Villager. The Villager cannot be held responsible for any goods or services advertised in the magazine.

Regular events in Martley and Wichenford:

Sundays

2nd Sunday in the month:

Teme Valley Farmers Market for local produce 11am The Talbot, Knightwick
Martley Ramblers meet Church car park

3rd Sunday in the month:

Path-or-Nones meet 9.30am Martley Memorial Hall car park to help maintain the local footpaths

Mondays

Rhythm Time: 9.30-11.30am Martley Memorial Hall *Enq.* Rachel 01886 812565
Martley Parish Council: 1st Monday in the month 8pm Memorial Hall

Tuesdays

Short Mat Bowling: 2.00pm Martley Memorial Hall

Wichenford Ladies' Fellowship: 2.30pm
2nd Tuesday in the month (usually)

Martley Mums and Tots: 9.30-11.30am
Martley Memorial Hall

Wednesdays

Teme Valley Shufflers Line Dancing:
7pm Martley Memorial Hall *Enq.* Jeff & Thelma 01886 821772

Martley Folk Club: 1st Wednesday in the month at The Talbot, Knightwick and 3rd Wednesday at The Admiral Rodney

Martley WI: 2nd Wednesday in the month 7.30pm Heaton House

Thursdays

Wichenford Wine Club: 3rd Thursday in the month

Martley & District Horticultural Society: last Thursday in the month 7.30pm Martley Memorial Hall

See Church Words on page 27 for details of services

See articles inside for details of special events AND changes of time/date/venue of regular events

See the Diary page on www.martley.org.uk for a complete listing of all forthcoming events (that the Diary page editor knows about)

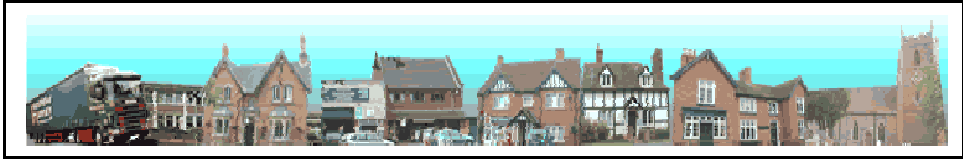
See page 28 for contact details of organisations

Articles to go in The Villager must be submitted by the 1st of the previous month

Records of the Parish Council meetings in the two parishes are not intended to be full and complete minutes. Minutes of meetings can be seen by contacting the respective Clerks to the Councils.

OUT AND ABOUT IN MARTLEY

Visit our website—www.martley.org.uk



The Villager wishes all its readers a very happy 2009.

Our cover picture

The delightful picture on the cover of this issue of The Villager is the winning entry of the Martley Christmas Fair School Picture Competition - "A Winter Scene".

The winner is Taymar Pearce-Mason and she is 10 yrs old and is in Yr 6 at Martley Primary School.

Martley Young Farmers

The Harvest Supper was a great success with a lovely meal at Sapey Golf Club, followed by a disco and presentation of cups. It was lovely to see past and present members enjoying the evening together. A big 'thank you' to Charlotte Davies who laid the wreath on behalf of MYF at the Remembrance Day Service and to Caroline Bullock and Ed Bedhall for representing MYF at the County AGM.

Martley Young Farmers were challenged for the pig trophy by Inkberrow YF at ten-pin bowling; it was a fun night with everyone taking part, but unfortunately MYF slimly lost. A pub quiz at The Crown was also held where members could show off their intelligence and raise some money for charity. A disco is being held at The Wharf Inn at Holt on Friday 6 February – ring Caroline or Lou for more details of MYF activities.

Martley & District Horticultural Society

The AGM was held on 27 November in the Village Hall with quite a good attendance. Chairman Ray Ellis welcomed everyone, and then paid tribute to Joy Snow, recently deceased She had been a member for many years and will be much missed in many ways.

The 'business' followed, and President Pat Finch addressed the meeting. Ray went over the year's events and thanked everyone for whatever they had done for the

Society. He is now replaced as Chairman by Mike Dunnett, Dave Cropp will be Vice Chairman, Pam Minchin and Margaret Jackson continue as joint secretaries, Sylvia Jeffries replaces Pauline Ellis as Flower Show Secretary, Rena Davidson remains Treasurer, with Reg Snow doing the accounts. Caroline Dunn joins the Committee. It is planned again to give charitable donations in due course. The Society is also to give a donation in memory of Joy to the charity Médecins Sans Frontiers. The programme for 2009 will shortly be available, as will the hyacinth bulbs for the March competition. The evening was rounded off with tasty, nibbles, and a good chat.

January's meeting will be on Thursday 29th— new members welcome!

Tina Steele



Martley WI

**Wednesday 14 January
7.30pm at Heaton House**

This month we are looking forward to hearing from Revd. Bruce Thomson telling of his life working for various charities, before he joined our Benefice as Curate. The competition is 'A favourite holiday photo'.

At the recent AGM Gwynneth Darby was thanked for her enthusiasm and leadership over the last three years. Helen Coombey-Jones will be at the helm over the next year. Already fixtures and dates are mounting up for the next few months. There is always so much happening in WI life.

The recent celebration in Worcester Cathedral for 90 years of Worcestershire Federation of WI was a most uplifting event. Rev Barlow, in whom we feel we have a proprietary interest, gave a lovely sermon on the meaning behind "Jerusalem" and also made a few comments on the Calendar Girls. Members and friends were so sorry to hear of the death of Joy Snow on 13 November. We shall all miss her very much.

Kate King

Martley Ramblers

**11 January 1.30pm
in the Church car park**

Pam Bowers presented a healthy balance sheet at the AGM and was re-elected joint Secretary/Treasurer. The annual sub will be kept at £1 per member £2 per family. Not bad in these days of inflation and credit crunches. Harry King was re-elected Chairman and gave his annual report. Average attendance over 2008 was 11 humans and 2.5 dogs.

Helen and George Coombey-Jones will be custodians of Mabel for 2009 as they were voted as having led the most interesting walk,

although the voting was very close. The programme for 2009 will be circulated to members shortly and will be on the Martley website as usual. This month Gill Gough will be leading around Worcester west. Come and join us to find out exactly where. Note start time is 1.30pm as afternoons can get dark early.

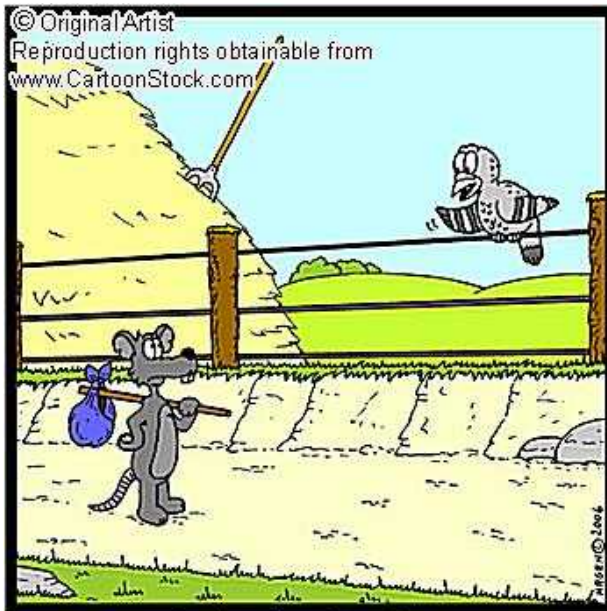
Kate King

Pudford Lane

The on-going story of Lane folk

Life goes on as usual, mainly peaceful with streams trickling down the road, sheep peacefully grazing, most trees bare of leaves and redundant apples gratefully devoured by fieldfares and redwings. The abundance of holly berries was soon eaten as well. There have been a lot of ravens around this year, croaking over the fields and starlings appear to be on the increase. Five borrowed sheep are grazing down the aftergrass in our SSSI and we are hoping drier weather over the next few months will bring a better showing of orchids in 2009.

The Pudford Poultry point-of-lay hens are not



**Sorry you're lost, but I'm a homing-pigeon:
I can give you directions to my place,
but that's about all...**

producing many eggs, probably spending too much time scratching around in the rotting hay bales. The



poultry handyman is fearing redundancy but his skills will doubtless be soon fruitfully diverted in other directions.

Rumours abound that someone connected with Formula One racing has bought Rodge Hill Farm. Sadly, probably not the charismatic Lewis Hamilton. Helicopter activity has been much in evidence recently and we hope this is not a foretaste of things to come.

Kate King

TM Logistics **A Good Year for a Martley-based Company**

The Midlands-based company, which employs over 300 people in 16 on-site operations and warehouses across the UK, saw turnover increase by 29.5% and going forward, it is predicting to increase this in line with its growth plans. Staff numbers have also increased during the year, with an additional 35 employees being

recruited to service existing and new business.

Stephen Taylor, chief executive officer of TM Logistics said: "We are satisfied with our latest financial results and they give us a strong platform on which to build. As well as expanding our existing customer base, which includes several brand leaders, we successfully grew our warehousing portfolio and we enhanced our people capability by taking on new staff." Grahame Taylor, managing director of TM Logistics added: "Against the backdrop of a challenging economic climate, the following year will see continued investment to support future business growth and a focus on improving overall operational efficiency. "As always, our strong performance would not have been possible without the support and commitment of our employees and their dedication has ensured we are well placed for the long term."



The Villager AGM

The Villager committee held its AGM at the end of November, and its members were pleased to be able to report another successful year all round. The committee were pleased to welcome Aileen Parker to the job of Advertising Manager and Helen Sandison, who has stepped in to take over the duties of Treasurer owing to the sad loss of Jim Sandison in the late summer.

Martley Parish Council

Abridged, draft record of the meeting held on Monday 3 November 2008 at the Memorial Hall. Chairman opened the meeting at 20:02pm.

Minutes of the meeting held on Monday 6 October, 2008:

It was resolved to accept the minutes as a true record.

Progress reports:

MHDC said that additional recycling bags can be collected from the Post Office at Clows Top and confirmed that the refuse men often have recycling bags on the trucks and if not, they would be happy, upon request, to bring them the following week. If Clows Top is inconvenient, please contact the Clerk who is happy to collect some bags and deliver them to Martley residents.

The Path-or-Nones have taken stock of all their equipment, so the Clerk will bring an amended draft

asset schedule to the next meeting for approval.

The Clerk has been in touch with Worcestershire County Association of Local Councils (CALC) regarding the lack of monitoring of Highways work. They have asked the Clerk to provide examples and will approach other parishes to see if they have similar issues. CALC have also been able to propose a formula for the Clerk to use for calculating the costs of working from home. The Clerk is still awaiting a response from Chris Boccock, MHDC Chief Executive, regarding housing needs in Martley. The Clerk has reported the hole in St. Peters Drive to Highways and has also reported the water running over the road at Prickley Green.

Highways standard of workmanship: Cllr.. Mr. R. McHugh is to seek further information in relation to recent works carried out by Ringway (the dropped curbs and removal of one grass verge) at the St. Peters Drive junction of Hollins Lane.

SWJCS Housing: Cllr. Cropp confirmed that he had attended the exhibition regarding the SWJCS, held in Martley Village Hall recently. There were three possible sites identified as potential sites for development in the future.

Smartwater: The Clerk has made

contact with the majority of interested Parishioners to explain the cost is £20.00 per pack. The Clerk will order 20 packs initially.

District and County Councillors' reports:

Cllr.. Mrs. B. Williams had nothing to report. Cllr.. Mr. A. Davies mentioned the following. A bid Worcester County Council (WCC) had recently submitted for a bus service from Crown East Roundabout to the town centre; hopefully 6 buses an hour and possible bus lanes being installed. . The need for a bypass for Rushwick, Lower Broadheath and Hallow if the proposed development of approximately 3000 houses goes ahead on the west and south of Worcester. He also discussed the need for infrastructure to support the development, i.e. schools, doctors, shops. An improved service should be provided by Network Rail from Worcester to London by Autumn 2010 as Network Rail are planning to lay dual track from Norton Parkway to London. He had met with the Road Safety Officer from WCC at Martley Primary School. The Officer will speak to the school to ascertain why the lights were not being used. If it is due to resources, these lights can be removed and replaced with an automatic system. WCC are still

trying to find a traffic crossing warden for Martley Parish Council. Martley Old Grammar School Foundation had awarded £12,000 to 51 applicants, awards from £150 to £300. The pupils were studying a variety of courses, for example, Crisis Management. It reflected well on the young people of Martley and surrounding areas. It is not yet known how much will be available for donations next year.

Planning:

New: 08/01604/AGR Hawkenest Barn Farm – Relocation of existing farm buildings 08/01543/FUL & 08/01544/LBC The Old Barn, Hillside – Proposed garden room extn. to rear. 08/01498/FUL Longside, Hipplecote – Replacement dwelling . 08/000067 The Chantry – Proposed conversion with mezzanine floor and glazed roof Pending: 08/01427/FUL Jury Cottage, Jury Lane – First floor extn. Over existing flat roofed extn. 08/01169/FUL Treetops Bungalow, Hillside – Proposed replacement of existing dwelling. Refused: 08/01127/FUL Old House Farm, Horsham – Ancillary domestic accommodation and storage.

Housing Needs Survey:

The report from Community First shows a poor return. It states a need for 15 affordable houses, including rental. Councillors

queried the statement “38 new dwellings will be required in the private sector” made on page 14 of the report. The Clerk is to ask Community First how this figure has been arrived at and will report back at the next meeting.

Finance:

Items discussed included: 9 cheques totalling £1,501.76, 6 for agreement and signature; the Council agreed to make a donation of £50 to the Royal British Legion for a poppy wreath.

Correspondence:

Included: Malvern Hills District Council Housing surveys, Martley Recreation Assoc. Insurance assistance. The latter item is to be discussed under Finance at the next meeting.

Councillors’ reports and items for future agendas:

Cllr..Mrs. D. Goodyear confirmed that she is arranging a meeting regarding the tip. The Clerk is to write to the Clerk of Lower Broadheath Parish Council to offer the support of Martley Parish Council regarding the bypass. The Clerk will write to Martley Recreation Assoc. to invite them to the next meeting to discuss their proposed income. Cllr. Mrs. E. Rothwell read correspondence she had received in relation to the children on bikes in Mortlake Drive and confirmed that she had

referred the matter to the local police. The Clerk is to speak to the Path-or-Nones regarding the path being taped and closed at Brook Court.

Date of next meeting:

The next meeting will be held on Monday 1 December 2008.

Sally Williams

*Clerk to Martley Parish Council
For Addendum 1 please apply to
the Parish Clerk or see the Parish
Council page on www.martley.org.uk*

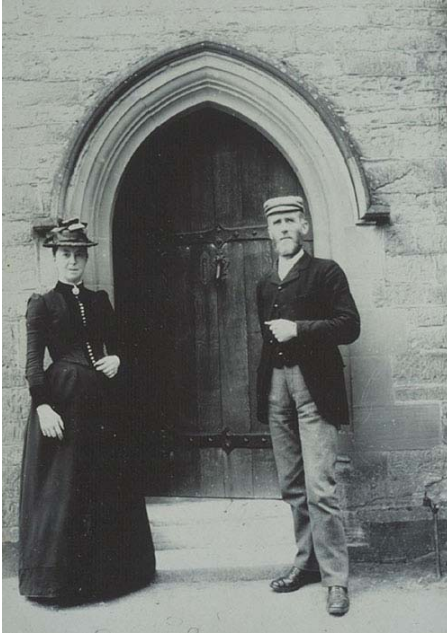
Martley’s Past

At the July 1907 meeting, once preliminaries were over, Minute No 2 was recorded:

“The Rev J F Hastings took this opportunity to say that he and the other members of his family wished to give a sum of £300 in trust, in memory of the late Rector, to be named ‘John Parsons Hastings’ Charity. The interest to be distributed each Christmas in coal to the poorer inhabitants of the Parish.” The Chairman (Mr R S Nash) proposed and Mr J Davis seconded that a vote of thanks be accorded to the Rev J F Hastings and family for their kind offer to this parish.

This matter was then raised again in the Parish Council’s April 1908 meeting:

Min No 3 “The Rev J F Hastings



Michael Coleman, Headmaster of Martley School, & wife, [1866-1893. Photograph courtesy of Worcestershire County Council Record Office

then produced the deed of the late John Parsons Hastings Charity: A sum of £300 was given by the Rev J F Hastings, Mr C P Hastings and Mrs Eleanor Elizabeth Lloyd and by deed dated January 1 1908 this sum is rested in the official Charitable Trustees. The interest to be paid to the Rector and Churchwardens of the Parish of Martley as Local Trustees. To be used for Purchasing and Distributing at their discretion to the Poorer Inhabitants of the Parish of Martley in Coal or other Fuel or Articles of household use Once a

Year in the Months of December or January. The Trust Deed containing the provisions regulating the Charity in the charge of the Rector.”

Alan Boon

Mobile Library

Ockeridge

Silver Oaks 9.45–10.05

Wichenford

Malvern View 10.10–10.35

Church 10.45–11.05

Kings Green Farm 11.15–11.40

Rosses Green 11.45–12.05

Martley Hillside

Horn Lane Bungalows 12.10–12.25

Martley

Taylor's of Martley 12.30–12.45

LUNCH

Heaton House 1.20–1.50

Church. 1.55–2.15

Clifton

Village Hall 2.30–3.50

The Mobile Library will be visiting these stops on Wednesdays on the dates listed below:

7 January 2009	15 July 2009
28 January 2009	5 August 2009
18 February 2009	26 August 2009
11 March 2009	16 Sept 2009
1 April 2009	7 Oct 2009
22 April 2009	28 October 2009
13 May 2009	18 Nov 2009
3 June 2009	9 Dec 2009
24 June 2009	30 Dec 2009

Any enquiries should be made to Stourport Library, Worcester Street, Stourport, Worcs DY13 8EH
tel. 01299-822
stourportmobile@worcestershire.gov.uk



Over the Garden Wall in Wichenford

WICHENFORD NEEDS YOUR NEWS

Janet Andrews
01886 888303
Sheila Richards
01886 888378



Church Flowers

4 January Mrs Webb
11 January Mrs Richards
18 January Mrs Richards
25 January Mrs J Andrews

Baby News

We are delighted to hear that Derrick and Marion Jinks have become great-grandparents for the fourth time. Their son Shaun and his wife Sue have become grandparents to beautiful twin boys, Cole and Kristian, born to their daughter Kim and her husband Barry. Shaun was born in Wichenford and lived here until his marriage to Sue. We send our heartiest congratulations and very best wishes to them all.



Silent Auction

Forward planning

There will be a Silent Auction with Cheese and Wine at Wichenford Memorial Hall on 6 March 2009—more details in the January issue of *The Villager* and on the Martley website www.martley.org.uk.

Ladies Fellowship

The Ladies Fellowship will meet at Mrs Jo Root's home on 20 January at 2.30pm, weather permitting.

PCC

The next PCC meeting is on 26 January at 7.45pm in the Memorial Hall.





The Shelsleys Educational Supplement

In response to popular request garnered at the end of the last series of talks on the History of Art the subject in the New Year will be:

Understanding Timber –Framed Buildings.

Duncan James comes well recommended as a speaker on this topic and we should be certain of an enthralling course. The dates are as follows:

- **Tuesday 20 January 2009 - How they were built and the earliest survivors. The value of dendrology.**
- **Tuesday 3 February The open hall house of the 15th century.**
- **Tuesday 17 February The Tudor years of change.**
- **Tuesday 3 March The 17th century house—the culmination and decline of timber framing.**

As in previous years, you can book for the whole series for £25 or you can attend individual talks at £8 an evening. The price includes a glass of wine or a cup of tea or coffee in the interval.

The venue is the Shelsleys Village Hall commencing at 7.30pm and finishing about 9.30pm.

It does help if those signing up for the whole course could send a cheque before 20 January to:

AJT Crabbe (CHARITY) at Fetterlocks Farmhouse,
Fetterlocks Lane, Shelsley Beauchamp, Worcester, WR6
6QS tel 01886 812 373.

Otherwise you can pay on the door.

All proceeds go towards church funds.



Teme Valley Children's Centre
Family Fun within the community
*Come along for crafts and fun with
a Chinese New Year Theme*

Monday 12 January 2009

10.00am—11.30am

Martley Memorial Village Hall

Booking is not essential but spaces will be limited
All materials supplied and lots of help is on hand
**Local Enterprise Stores will be available for great gift
ideas for any occasion.**

Call 01886 812982 for more information

Suitable for birth upwards
All children must be accompanied by an adult
Minimum contribution of £2 per child

Burns Supper

Friday 23 January 2009
Wichenford Memorial Hall,
7:30pm for 8pm

A fun evening to celebrate the life and works of Robert Burns, Scotland's finest poet.

All Welcome. Tickets £16.50 per head. Cash bar. Book tickets soon to avoid missing out.

Sheila Richards 01886 888378
Gill Richardson 01905 425652
James Hyslop: 01886 887805

Cock- a- Leekie Soup
Haggis tatties and neeps
Tipsy trifle
Coffee

Entertainment will follow the meal including songs, readings and poems of Robert Burns. There will be a short speech in appreciation of the poet's life and works.

*Please wear tartan on the night or
dress to kill!*

Any profit from the event will go to a local charity.

The Way We Were

Notes on life around the Martley and Worcester areas 100 years ago

GERTRUDE ELIZABETH WALTERS 1901 - 1996

Gertrude Elizabeth Walters was born on 19 November 1901, at Claines Police Station, near Worcester, and christened at Claines Church.

My first recollection was living at Great Witley Police Station when I was about four or five. My father by then had been promoted to Sergeant and was in charge of a district of a radius of about 10 miles where various Police Constables were stationed and who my father visited on a bicycle. A Superintendent lived at Stourport and visited us (sometimes bringing his wife and family) in a pony and trap. My mother cycled to Stourport now and again for extra shopping - there was a baker, butcher and Post Office in the village.

The Police Station consisted of our living quarters - a sitting room with a large range and oven attached in front of which we had our weekly baths, the water being heated in a "copper" with fire underneath which was in a scullery attached to the kitchen and where my mother did the weekly wash in a "dolly tub". There were three bedrooms and our washing facilities were jugs and basins in each bedroom.

Toilets were potties under the bed, the contents of each being collected in a pail and emptied in an earth closet at the end of a long garden. Attached to the house was an office or Charge Room (where offenders were charged) and a sitting room with bedroom above for a single recruit and behind a cell where offenders were kept overnight before being dealt with by a magistrate. Beyond the garden was the Court House where cases were heard periodically. A pump was in the small yard outside the back door and beyond quite a large garden where we grew



our own fruit and vegetables and, at the end of that, the closets, (3), a pigsty and hen house also a stable and coach house for housing the Superintendent's horse and trap on his visits. Lighting was oil lamps and candles which we used to light us to bed and which cast eerie shadows which scared my brother and me.

Great Witley School

With other children living near us, we went to the Village School where naughty ones were given three strokes of the cane before the whole assembly. In Winter, it was hazardous getting there as we had to cross a large field, sometimes in deep snow. I suffered from broken chilblains on my feet and often could not get my high buttoned boots on, and therefore was an absentee for a fortnight or so. My brother remembers seeing his first Magic Lantern Show at the Hundred House Hotel, Great Witley, which was hand-operated, and we all ran to our front gate to see the first motor car to come by. It was high off the ground and gleaming with polished brass. The ladies wore large hats with scarves tied over them to keep them on. The cars stirred clouds of dust behind them as they chugged along.

Every Saturday, the "carrier cart" plied into Worcester and in the summer holidays sometimes I would be taken to catch another "carrier cart" to go to Inkberrow to stay with my Grandpop and Grandma, who had a small-holding and kept a horse named Pol and a governess trap. I think I was rather a favourite with my Grandpop - he always made a great fuss of me and called me "Jerry's Gal".

My brother, Charles, went on to Hartlebury Grammar School and had to cycle 8 miles there and 8 miles back each day - then had homework to do. He was glad when my father was promoted to Inspector and we moved to Worcester Police Headquarters in Castle Street and he transferred to

Worcester Royal Grammar School

My mother was delighted with the new house as we now had electric light, a gas cooker and a bathroom with indoor flush toilet. The buildings consisted of five police houses for a Deputy Chief Constable, a Superintendent, two Inspectors and a Sergeant and accommodation for single Constables.

There were offices, cells and an airing yard for prisoners to take exercise, stables and coach houses and a large yard in the centre of all these buildings where policemen were drilled, and we children played hoops, hopscotch, skipping and cycled round and round on our bicycles.

I was nearly nine years old when we moved and had a year to go before I could get into the Secondary School, so I was sent to a private school only two doors away from home for a year. This was run by two sisters, the Misses Kendrick. There were only about a dozen pupils and I am afraid we did not learn very much. When I was 10, I passed the entrance exam to the Secondary School which was in Taylor's Lane off Foregate Street. We had to take our fee of 2 guineas on the first day of each term and if we forgot it were sent home to fetch it. I did not like school at all and was glad when I left at 15.

The Villager would like to thank Mrs Walters' relative and editor for sending in this interesting account.

Another installment soon!

When is New Year's Day?

A simple question, you might think, but read on!

For those who follow the Gregorian calendar, New Year's Day is always 1 January as it was in ancient Rome. In the Northern hemisphere, this date is in the middle of winter, about 10 days after the Winter Solstice, which is the shortest day of the year. The changes made by Gregory corrected the drift in the civil calendar which arose

because the mean Julian calendar year (exactly 365.25 days) was slightly too long, causing the date on which Easter was being celebrated, to drift slowly forward in relation to the civil calendar and the seasons. The Gregorian calendar is the most widely used calendar in the world today. It was decreed by Pope Gregory XIII, after whom it was named, on 24 February 1582 by papal bull *Inter Gravissimas*.

The Gaulish/Celtic calendar appears to have divided the year into two halves: the 'dark' half, beginning with the month Samonios (the October/November), and the 'light' half, beginning with the month Giamonios (the April/May). The entire year might have been considered as beginning with the 'dark' half, so that the beginning of Samonios may be considered the Celtic New Year's day.

The celebration of New Year itself might have taken place during the 'three nights of Samonios' at the beginning of the lunar cycle which fell nearest to the midpoint between the autumnal equinox (approx 23 September) and the winter solstice (approx 21 December).

Samhain, means "summer's end", from sam "summer" and fuin "end". The name derives from Samonios, with its festival marking the end

of the summer season and the end of the harvest. The Gaelic festival became associated with the Catholic All Souls' Day, and appears to have influenced the secular customs now connected with Halloween.

Although for Celtic countries, the winter season and the new year traditionally began 1 November, this calendar system of seasons might have been based exclusively on the length of days. Most East Asian cultures define the seasons by solar terms, with the mid-winter festival of Dong zhi at the winter solstice as the middle or "extreme" of winter. This system is based on the sun's tilt. Some midwinter festivals have occurred according to lunar calendars and so took place on the night of the full moon closest to the winter solstice. Many European solar calendar midwinter celebrations still centre



upon the night of December 24 leading into the December 25 in the north, which was considered to be the winter solstice when the Julian calendar was established. In Jewish culture, Tekufat Tevet, the day of the winter solstice, is historically known as the first day of the "stripping time" or winter season. Persian cultures also recognize it as the beginning of winter.

Rosh Hashanah, literally "head of the year," is a Jewish holiday commonly referred to as the "Jewish New Year." It is observed on the first day of Tishrei, the seventh month of the Hebrew calendar. Rosh Hashanah is the first of the High Holidays or Yamim Noraim ("Days of Awe"), or Asseret Yemei Teshuva (The Ten Days of Repentance) which are days specifically set aside to focus on repentance that conclude with the holiday of Yom Kippur. Rosh Hashanah is the start of the civil year in the Hebrew calendar. Tishrei usually occurs in September–October on the Gregorian calendar, and coincides with either the eighth or ninth month of the Chinese calendar.

Chinese New Year, known in China as Spring Festival, is the most important of the traditional Chinese holidays. It is sometimes called the Lunar New Year, especially by people outside China. The festival traditionally begins on the first day of the first lunar month. Celebrated in areas with large populations of ethnic Chinese, Chinese New Year is considered a major holiday for the Chinese and has

had influence on the new year celebrations of its geographic neighbours, as well as cultures with whom the Chinese have had extensive interaction. Lunar New Year refers to the beginning of the year in several calendars.. The Chinese calendar influences the date of new year in many cultures, including Korean, Tibetan, Vietnamese and Mongolian. Worldwide, interpretation of how celestial events mark the start of a new year varies from culture to culture, but most cultures hold a recognition of rebirth, involving holidays, festivals, gatherings, rituals or other celebrations, around their chosen time.

Michelle Higgins

Recycling—Your New Year Resolution

Before you bin something today, think about how you can reuse or recycle it. The amount of rubbish each household produces annually is increasing. In the UK a lot of waste is buried in landfill sites, which has huge environmental impacts. Throwing away things wastes raw materials – recycling uses less energy and causes less pollution than using raw materials.

But we know that recycling can sometimes be confusing and it can be difficult to know whether you are following all the right rules.

You can find out how to recycle different materials and how to go about it with BBCGreen's product-by-product guide. <http://www.bbcgreen.com>.

In the Garden



In the Garden in January

The weather made 2008 a frustrating year for gardeners; let's hope we see more sunshine in 2009. January can bring some hard frosts. A few really cold nights are welcome, as they will reduce the numbers of insect pests and bugs surviving over winter, but check that you have plenty of protection in place for precious plants.

If you fancy trying some different potatoes, you will be able to buy seed potatoes this month at a number of local garden centres. For the really keen, Garden Organic at Ryton, near Coventry, holds a Potato Day on Sunday 25 January. There you can choose from over a hundred varieties and get all the information you need about growing them. Two varieties which did well here last year were 'Winston' and 'Maxine'. The early varieties can be chitted straight away by leaving them in a cool, light place.

Aubergines should be sown in a

warm place at the end of January. They need that extra length of growing time so that they will flower in early summer and get enough heat and sunshine to bring on the fruit. Peas, broad beans and lettuce can also be sown under cover in late January.

Two flower favourites at this time of year are hellebores and snowdrops. Ashwood Nurseries in Kingswinford are hellebore specialists and there is a special Hellebore Weekend Jan31st./Feb1st. You will find details on their website. If you are fond of snowdrops, take a look at the 'Judy's snowdrops' website (www.judyssnowdrops.co.uk) to see pictures of dozens of beautiful



varieties. There is a rare group with yellow markings, *Galanthus nivalis* Sandersii, named after our own local 'notable' gar-

dener Thomas Sanders. One of the best places in the country to see snowdrops is Colesbourne Park Gardens, on the A435 south of Cheltenham. They are open on Saturdays and Sundays starting 31 January until 1 March.

JC



Church Words

The Rectory 01886 888664

2009 has arrived and for St. Peter's Martley it will be 100 years since the major internal renovations took place. The church was quite different inside at that time with no Rood screen at the front, a balcony at the back, a boiler in the middle of the aisle and the wall paintings were uncovered during this time. Not only did the church look different but so did Martley. There was a workhouse with its chapel and many other aspects of village life were very different.

To celebrate these renovations we have been investigating how the alterations happened, and have been able to read some of the Parish magazines from that time. It began in the July of 1909 with a garden party, followed by a play, a tennis tournament and other events. We have already held preliminary meetings to discuss how we might celebrate the occasion, which has led to the planning of a Flower Festival for the August Bank Holiday. Other ideas include new kneelers, altar frontals, improvements to the organ, heritage events, art, music and perhaps a play performed by local people. There were other ideas too but we need help in making these ideas happen so if you would like to get involved then why not come to a meeting **at 7.30pm on Wednesday 14 January at St.**

Peter's Martley.

The excerpt from the magazine for January 1909 read:

We enter a new year with the satisfaction of knowing that our church restoration fund though not complete, is advanced enough to justify us in starting the work in the spring ... If all prospers it will indeed be a year to be remembered by the parishioners of Martley, and a joy to us and future generations.

I think you will agree with the sentiments of the time and it is now for us to celebrate in remembering the efforts of our forbears in giving us such a wonderful heritage for then, now and the future.

There was also a note from the Rector in 1909 that Confirmation was about to happen. It is with pleasure that we congratulate those confirmed in from this Benefice on 30 November 2008: *Harriet Allen, Kate Bray, Claire Brooke, Lucy Brooke, Charlotte Davis, Kayleigh Fennell, Sarah Kirby, Victoria Martin, Katie Martin, Frances Taylor, Victoria Twinberrow, and Diana Waldron.* Not only were the Church stones being tended, but the living stones that are the church continued to grow as we do today.

God Bless you all

Revd David Sherwin

January Services

SUN 4 JANUARY	8.00am Holy Communion, Knightwick Chapel 10.30am Holy Communion, St Laurence, Wichenford 10.30am Family Worship, St Peter, Martley 10.30am Morning Worship, St Mary Magdalene, B'was 6.30pm Evensong, St Leonard, Cotheridge
Mon 5 January	9.00am Morning Prayer, St Laurence, Wichenford
Tue 6 January	10am Holy Communion – St Mary Magdalene, B'was
Wed 7 January	10.15 Morning Prayer, St Peter, Martley
Thu 8 January	9.00am Morning Prayer, St Laurence, Wichenford
SUN 11 JANUARY	8.00am Holy Communion, St Leonard, Cotheridge 10.30am Family Worship, St Laurence, Wichenford 10.30am Holy Communion, St Peter, Martley 10.30am Morning Worship, St Mary Magdalene, B'was
Mon 12 January	8.30am Prayer Breakfast
Tue 13 January	10.00am Morning Prayer, St Mary Magdelene, B'was
Wed 14 January	10:15am Holy Communion, Heaton House
Thu 15 January	9.00am Morning Prayer. St Laurence, Wichenford
SUN 18 JANUARY	8.00am Holy Communion, St Peter Martley 9.00am Matins, St Leonard, Cotheridge 10.30am Holy Communion, St Mary Magdalene, B'was 10.30am Morning Worship, St Peter Martley 3.00pm Evening Worship, Knightwick Chapel 4.00pm Evening Worship, St Laurence Wichenford
Mon 19 January	9.00am Morning Prayer, St Peter, Martley
Tue 20 January	10.00am Holy Communion, St Mary Magdalene, B'was
Wed 21 January	10.15 Morning Prayer, St Peter, Martley
Thu 22 January	9.00am Morning Prayer, St Laurence, Wichenford
Fri 25 January	Burns Supper Social, Wichenford Village Hall
SUN 25 JANUARY	8.00am Holy Communion, St Mary Magdalene, B'was 9.30am Holy Communion, St Peter Martley 10.30am Family Worship, St Mary Magalene, B'was 10.30am Holy Communion, St Laurence, Wichenford 6.30pm Evening Worship, St Peter Martley
Mon 26 January	9.00am Morning Prayer, St Mary Magdalene, B'was
Tue 27 January	10.00am Morning Prayer, St Mary Magdalene, B'was
Wed 28 January	10:15am Holy Communion, Heaton House
Thu 29 January	9.00am Morning Prayer, St Laurence, Wichenford

Village Contacts



Editor of The Villager	Michelle Higgins editor@martley.org or 01886 888344 or leave articles at Martley Post Office
Advertise in The Villager	Aileen Parker.—01886 888456
Church	<i>Rector:</i> Revd David Sherwin—01886 888664 or davidwin56@aol.com <i>Curate:</i> Revd Bruce Thomson—01886 888098 <i>Assistant Priest:</i> Revd Jennifer Whittaker—01886 833897
Martley Parish Council	<i>Chair:</i> Dave Cropp—01886 888398; <i>Clerk:</i> Sally Williams—01299 832949
Martley WI	<i>President:</i> Helen CoombeyJones—01886 888294
Martley & District Horticultural Society	Pam Minchin—01886 888521 or Margaret Jackson—01886 888654
Royal British Legion	Joyce Tyler—01886 821551
Martley Ramblers	Harry King—01886 888439
Martley Young Farmers	Lou Wickens—01886-812754 or Caroline Bullock—01905-333617
Path-or-Nones	John Nicklin—01886 888318 johnn@martley.org
Resource Centre	Alan Boon—01886 888527
Police “Surgery”	CSO Matt Smith 7184—Martley Local Policing Team Tenbury Wells Police Station extn. 3581
Martley Website	webmaster@martley.org
Martley Web Mesh	Richard Jackman—01886 821237 richard@martley.org John Layton—01886888460 johnl@martley.org Tom Pearsall—01886 888256 tom@martley.org
Martley Pre-School	Kath/Lucy—01886 889127 www.martleypreschool.co.uk
Wichenford contacts for The Villager	Janet Andrews—01886 888303 or Sheila Richards—01886 888378
Kenswick & Wichenford Parish Council	Clerk—Shirley Sanders 01886 888302
Wichenford Wine Club	Chairman—Bill Hylan 01886 888431

To have your organisation and its contact details appear on this list, or to change the details shown here, email editor@martley.org or leave a note for the editor at Martley Post Office.

And finally ...

Knock Knock

Who's there?

Machiavelli

Machiavelli who?

Machiavelli a nice suit for £70.

“Darling, just imagine - we have now been married for 24 hours.”

“Yes dear, it’s incredible. And it seems as if it was yesterday.”

Joke: The car was so old that someone had scratched on it “Rust in peace”.

Customer “Why is this chop so terribly tough?”

Waiter “Because, Sir, it is a karate chop.”

Magic Spell

I	M	T
A	R	P
Y	L	S

Find the 9-letter word in the grid then see how many words of 4 letters and over you can make using the centre letter in all words and each letter only once.

PALMISTRY

Q. How did the human cannonball lose his job?

A. He got fired!