

# ImageIndex+

For commercial Image libraries and digital Image archives



Are you:

An organisation seeking efficient management of a growing number of digital images?

A commercial image library selling to publishers, advertisers or media production companies?

A cultural institution wanting to provide public access to archival or contemporary collections?

We have the system for you.

## A system for your specific needs

System Simulation has extensive experience of creating and developing image library systems. This began with our pioneering work providing Getty Images with bespoke, state of the art keywording, vocabulary and mapping tools, to manage and integrate image data across dozens of collections. Other prestigious image management clients include Wellcome Images, The V&A, The British Red Cross, British Parliament and The British Film Institute.

ImageIndex+ is the distillation of our unique and varied experience into a high specification, integrated package. The system has been meticulously designed, with attention paid to the needs of all users. Its long list of features ensures that it fulfills the differing requirements of cataloguers, picture researchers, librarians, system administrators and customers. The core system offers all essential functionality and much more. Additionally, there are many optional features available and we can provide customisation to meet more specific needs. Our aim is to deliver precisely the right system for any client.

## Robust, efficient and flexible -

ImageIndex+ is software that is a pleasure to use.

## Robust

Built upon robust, well tried and tested, software, relied upon by world leading institutions and businesses.

Extremely fast search speeds assured, regardless of database size. Adaptability and scalability are key features.

Compliance with international standards ensures interoperability and sustainability.

## Efficient

Simultaneous display of the interaction between the image, catalogue data and search results.

Keyword images individually, with new terms added to the vocabulary as they are entered, or select groups of records for efficient batch keywording.

Quickly structure a controlled vocabulary and add synonyms or alternate terms to enhance searchability.

Powerful terminology management enables the creation of anything from a simple list of terms, to the most sophisticated, hierarchical taxonomy with thesaurus.

Free text, keyword and advanced, structured searching are all available, for fast and accurate retrieval of records.

Time saving features such as automatic session save and restore.

## Flexible

Unlimited growth and development potential.

Searchable website interface with ordering and e-fulfillment, provided as standard.

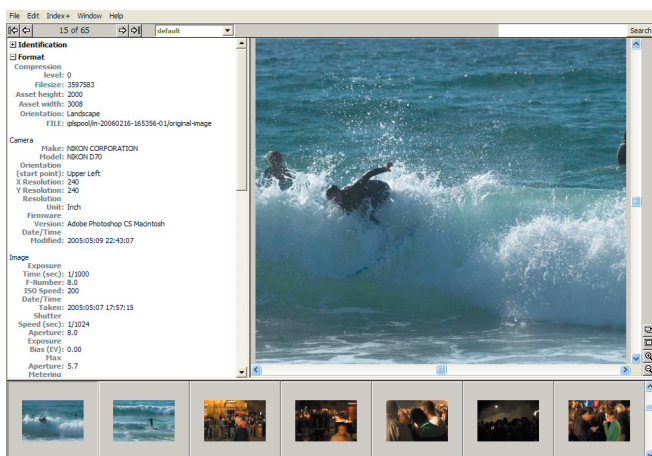
Select and arrange selections of images into groups and hierarchies with the highly flexible lightbox Organiser.

Customise the screen layout for specific tasks.

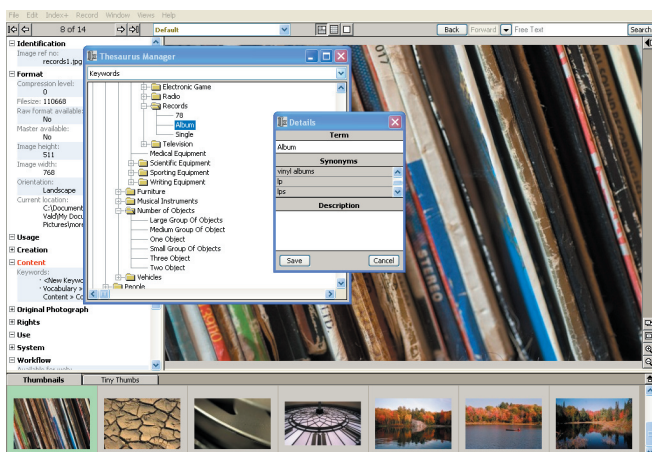
Highly customisable catalogue field views.

Multi-user access as standard. Four licenses provided.

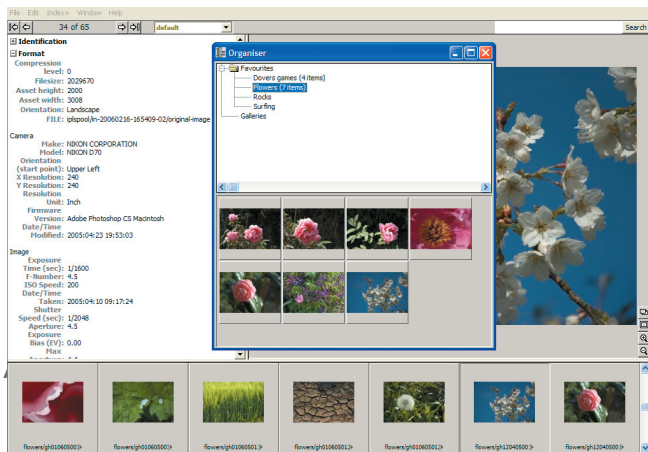
Easy upgrade path to AssetIndex+, if the need arises to manage other media types.



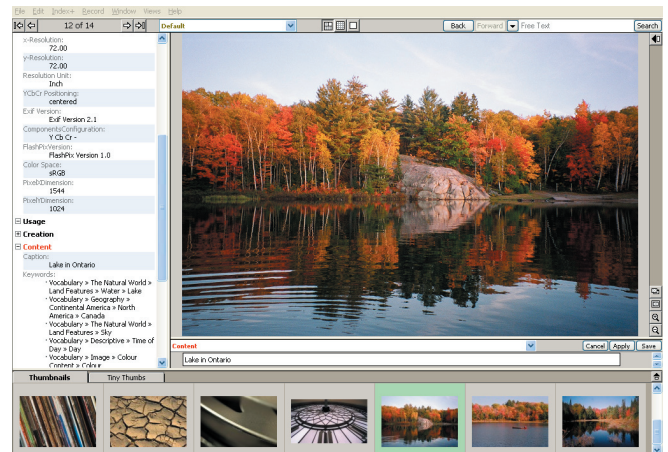
ImageIndex+: Main window



ImageIndex+: Keywords window



ImageIndex+: Organiser window



ImageIndex+: Editing caption in Main window

## Features

### Image handling

- Automatic generation of multiple image sizes
- Sophisticated lightbox Organiser
- Shared lightboxes
- Automated image load and record creation
- Batch loading of images
- Batch editing
- Support for major image formats including TIFF, JPEG, GIF, PNG, PhotoCD
- Compliant to IPTC, EXIF and XMP standards

### Database and client

- Licences available for any amount of image records
- Standard set of core IPTC, XMP and EXIF fields
- Standard reporting
- Highly customisable catalogue field view
- Ability to clone records
- Automatically catalogue images on import
- Free text, wildcard, keyword and advanced search
- Saved search histories
- Auditing trail

### Administration

- Multi-user access (4 licenses)
- Workflow control
- Ordering

### Terminology & Metadata

- Terminology control and authorities
- Thesaurus management
- Drag and drop taxonomy/vocabulary editor
- Drag and drop keywording
- Batch keyword addition/removal
- Metadata creation, editing and batch editing
- Data export in many text formats and XML
- Management of rights metadata
- Read IPTC, XMP and EXIF metadata from image file
- Export metadata in XML format
- Technical metadata

### Web

- Searchable website
- Single, session-based web lightbox
- Dynamic galleries
- Web accessibility conformance
- Ordering facility
- e-fulfillment

### Additional Options

In addition to the features above, the system is easily adaptable with a range of options available to meet more specific requirements. These include user administration, data migration (including the import of existing terminology sets), e-commerce, faceted search and facilities for audio, video and other digital asset types.

### Full Design Service

We are able to offer a full range of web design services. These include assisting with the articulation of a design brief, design implementation, accessibility and usability testing.

## System Simulation

Burleigh House, 28 Tavistock Street, Covent Garden, London WC2E 7PB

Tel: +44 (0)20 7836 7406 Fax: +44 (0)20 7836 7690 Email: ssl@ssl.co.uk Web: www.ssl.co.uk

## ImageIndex+ Applications

### *The Wellcome Trust Medical Picture Library*

The Wellcome Trust is the world's largest medical research charity. Its Medical Picture Library builds and maintains a collection of high quality images covering the history of medicine, contemporary clinical medicine, general healthcare and the biomedical sciences. System Simulation has provided a bespoke system to make the collection available to as wide an audience as possible for research, education and commercial purposes, as well as to the general public.

### *Getty Images*

Further to work providing Hulton Archive with an image management system and searchable website, System Simulation developed a suite of tools for Getty Images. The keywording, vocabulary management and data-mapping (to integrate dozens of new collections) components worked alongside a sophisticated search tool used throughout all departments of the global organisation. We provided a feed of data to the Getty Images website that facilitated advanced searching facilities, with multi-lingual thesauri.

### *Victoria & Albert Museum Picture Library*

System Simulation has provided a succession of systems for managing the catalogue for the V&A Picture Library. A Digital Asset Management system has recently been installed that provides image and digital asset management across the Museum and delivers images to a series of other applications, including the V&A's Collection Information System, its Library and third-party software that supports some of the V&A's commercial functions.

### *London's Transport Museum Photograph Library*

London's Transport Museum was a pioneer in the use of computer systems for managing photographic library catalogues. Comprehensive descriptions and digitised images of over 70,000 photographs and 5000 posters, plus many maps, are now available through the LTM Total Access Project.

### *bfi Stills Image Library*

The British Film Institute has installed an Index+ Image Management System for its unique collection of stills. These are being made available to picture researchers globally over a secure intranet.

### *RTE*

The Irish broadcasting corporation, RTE, uses ImageIndex+ for the management of its extensive stills collections associated with broadcast programmes and also for the historical photo collections in its care. Images are managed in a central library and access for staff is provided via the organisation's intranet.

### *British Red Cross Society*

The British Red Cross Society has an ImageIndex+ system for the internal management of images use by staff located across the UK. Special features include galleries of images related to current events that are directly available from their intranet's homepage.