

INCLUDES 2012/13
NEW STOVE DESIGNS

town  country fires

*Efficient stoves...
that won't
cost the earth*





Contents



Farndale

Page 6



Ryedale

Page 7



Little Churlow

Pages 8 & 9



Dalby

Pages 10 & 11



Whisperdale

Page 12



Bransdale

Page 13



Thornton Dale

Pages 14 & 15



Caedmon

Pages 16 & 17



Rosedale

Pages 18 & 19



Priory

Page 20



Glaisdale

Pages 22 & 23



Welburn

Pages 24 & 25



Byland

Pages 26 & 27



*Runswick
Inset Mk I*

Page 28



*Runswick
Inset Mk II*

Page 29



*Rosedale
Inset*

Pages 30 & 31



Welcome

Town and Country Fires is a family run business based in Pickering on the edge of the North Yorkshire Moors. Once farmers, the Thurlow family took the big decision to diversify and as a consequence started the stove business in 1977.

Gaining a wealth of experience over the years and using a combination of old and new techniques, has led to the company developing and manufacturing some of the best, energy efficient, solid fuel and wood burning stoves in the world.

The full range of solid fuel and wood burning stoves all carry certified efficiency ratings and comply with EN 13240 2001. They are also Hetas approved and C.E. marked.

4

All our stoves have an air wash to the glass, which works extremely well. Most have tertiary air at the rear of the fire box too, which burns off gases at the back of the fire that do not normally ignite, thus giving a very clean burn, causing less pollution in the atmosphere.

Town and Country Fires are one of the very few stove people who actually make the stoves from start to finish. We design and

perfect the combustion in the stoves, so that they out-perform some of the very best stoves across the world. We buy best British steel, cut it accurately with a laser cutter, then bend it with a C.N.C press. The metal formed shapes are then passed to our robot welder which produces high penetration, extremely accurate joints. Once the bodies have been produced in this way, they are finished by hand, which includes shot blasting to enable a good

penetration of paint. Some of the stoves are completely hand made, by staff who have worked for us for many years.

The smoke control *Little Thurlow* for burning wood in smokeless areas, has been put through stringent testing and has been approved with slight modifications, which shows how clean burning all of the Town and Country stoves are.





CAST IRON OR STEEL STOVES?

Steel is stronger and more durable as the seams are welded together, whereas cast iron stoves are bolted and sealed together with fire cement or rope. In time the bolts corrode and the stove is not airtight and not usable. Also cast iron is very brittle and may crack if heated up too quickly, the Town and Country stoves will expand and contract through operation and should last for 50 years or more. In the past bridges were all built of cast iron, but for the same reasons, they are not any more.

A Town and Country stove is one of the most efficient stoves on the market, up to 84% efficient as you can see by reading our brochure, so you can be assured you are buying a top quality stove at a reasonable price, which will keep your family and home warm for many years to come.

BURNING WOOD

Wood ought not to be burnt on a stove if it is not seasoned and dry, you pollute the atmosphere, tar up your chimney, and chimney fires are caused. Wood needs to be no more than 20% moisture content, and when buying wood straight from a local log supplier, they will not usually be dried and seasoned. Logs don't dry in a garage, they need to be out in the open, preferably with just a roof or cover over them.

When seasoned wood is burnt on a very efficient stove, you can produce over 5kW of heat per hour using only 1.5kg of wood – which is the equivalent of two hard wood logs, roughly 6" long x 3" diameter.

A Carbon Neutral Fuel

When trees grow they absorb carbon dioxide and generate oxygen. When wood is burnt in a stove or left to rot, it will release the same amount of carbon dioxide.

INTERNET POLICY

Town and Country Fires recommend that customers buy Town and Country Stoves only from a local, recognised stockist. If products are purchased from a non-approved source, we cannot guarantee that the product purchased is an up-to-date model with the latest features, nor can we be sure that the potential customer will have been given the best advice regarding suitability and installation. We point out that there is no contract between Town and Country Fires and the customer, their contract is with the supplier and our contract is with the dealer only.

A customer buying through the internet can have no redress via us and will be passed back through the chain if necessary.

Farndale

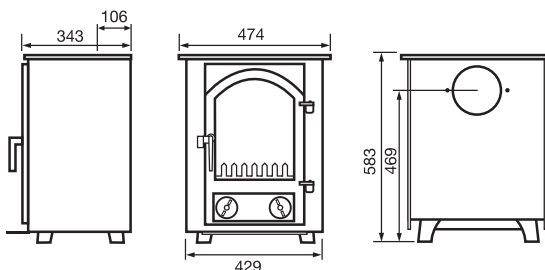
FARNDALE

6



- 5kW output
- Multifuel
- British Made
- 81.1% Efficient on Wood
- 83.7% Efficient on Solid Fuel
- 6" Diameter Flue
- Max. Log Length 350mm
- Tertiary Air
- Riddling Grate
- Brass or St/Steel Fittings
- Weight 68kg

The Farndale is a robust stove, compact but with a deceptively roomy firebox, and an output of 5kW. There is a strong cast iron door, and the fire is kept safe behind a large glass area. There is a multi-fuel grate which riddles from the outside, and like all Town and Country clean burning stoves, there is a good sized ash pan to make ash removal easy.



There is a heat shield supplied with this free standing stove, which fits on the back panel.

If this is fitted, allow an additional 30mm to the depth shown on this diagram.

Ryedale

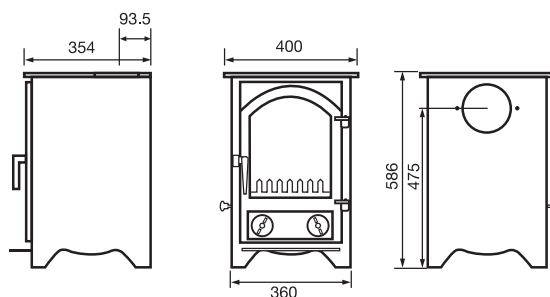


RYEDALE

7

- 5kW output
- Multifuel
- British Made
- 78.9% Efficient on Wood
- 79.6% Efficient on Solid Fuel
- 5" Diameter Flue
- Max. Log Length 290mm
- Tertiary Air
- Riddling Grate
- Brass or St/Steel Fittings
- Weight 67kg

The Ryedale is the smallest multi-fuel stove from Town and Country Fires, ideal for a small room. The flue outlet can be top or rear, and although the stove is compact, the output is still 5kW. The main air is controlled by two spin wheels near the bottom of the door and the two top spin wheels allow air into each side of the stove where it is warmed. Then the warm air comes out of a vent behind the glass, thus keeping the glass beautifully clean.



There is a heat shield supplied with this free standing stove, which fits on the back panel.

If this is fitted, allow an additional 30mm to the depth shown on this diagram.

Little Thurlow

Standard or Smoke Control

LITTLE THURLOW

8

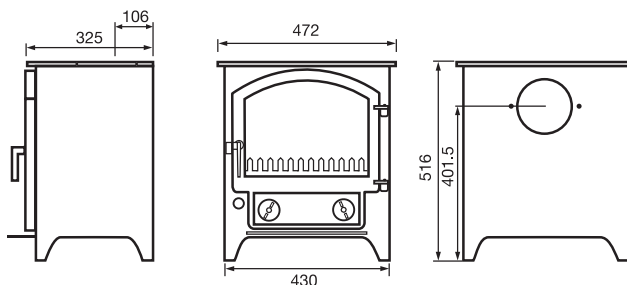


- 5kW output
- Multifuel
- British Made
- 78.9% Efficient on Wood
- 79.6% Efficient on Solid Fuel
- 6" Diameter Flue
- Suitable for 12mm hearth
- Max. Log Length 350mm
- Tertiary Air
- Riddling Grate
- Brass or St/Steel Fittings
- Weight 61kg

This stove is designed specially for the lower fire opening, being only 520mm high but with a good sized glass giving a wonderful view of the fire. The turbo burner (tertiary air) brings air into the stove towards the back of the fire, allowing plenty of oxygen into the rear and top of the stove, thus burning off gases which normally do not ignite. This give the Little Thurlow more efficiency, better combustion and less pollution.

SMOKE CONTROL LITTLE THURLOW

This efficient stove has been developed as an exceptionally clean burning stove so that it is approved by DEFRA to burn wood in a smoke control area. Outer appearances are the same as the standard Little Thurlow.



There is a heat shield supplied with this free standing stove, which fits on the back panel.

If this is fitted, allow an additional 30mm to the depth shown on this diagram.

Little Thurlow

Standard or Smoke Control - with Log Store

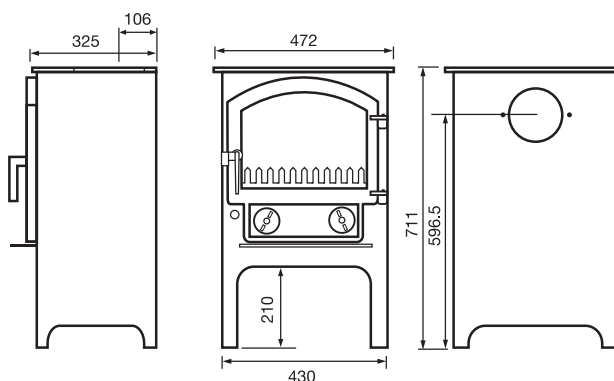


- 5kW output
- Multifuel
- British Made
- 78.9% Efficient on Wood
- 79.6% Efficient on Solid Fuel
- 6" Diameter Flue
- Suitable for 12mm hearth
- Max. Log Length 350mm
- Tertiary Air
- Riddling Grate
- Brass or St/Steel Fittings
- Weight 61kg

The Little Thurlow is also available with a built in log store, and this is very useful when a small stove is required but the opening is large.

SMOKE CONTROL LITTLE THURLOW

This efficient stove has been developed as an exceptionally clean burning stove so that it is approved by DEFRA to burn wood in a smoke control area. Outer appearances are the same as the standard Little Thurlow



There is a heat shield supplied with this free standing stove, which fits on the back panel.

If this is fitted, allow an additional 30mm to the depth shown on this diagram.

Dalby

DALBY

10

NEW FOR 2012/13



- 5 kW output
- Multifuel
- British Made
- Simple controls
- Optional Outside Air Kit – Manual or Remote Control
- Built in Tertiary Air
- Suitable for 12mm hearth
- 78.9% Efficient on Wood
- 79.6% Efficient on Solid Fuel
- Maximum log length 350mm
- Riddling Grate
- 6" diameter flue (top flue only)
- Brass or St/Steel Fittings
- Weight 61 kg

town & country fires

The Dalby, shown here in Almond. Our stoves can be finished in a number of colours - See page 21.

The Dalby Multi Fuel stove is the smallest of our new range of stoves at 5kW. The Dalby is controlled by two simple levers which are below the door, these levers take the place of the spin wheels. One lever controls the primary air and the second lever controls the secondary and tertiary air. Once the fire is established, there is no need to use the primary air lever except with smokeless fuel, even when re-fuelling.



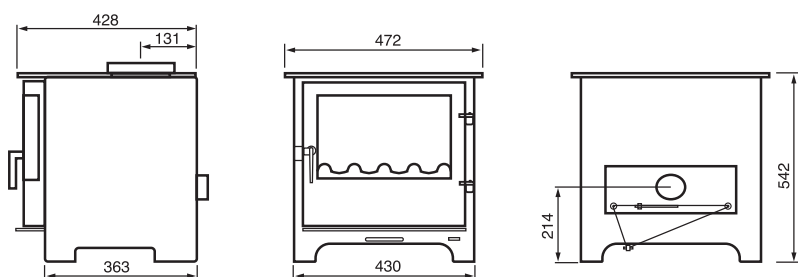
REMOTE CONTROL BOX

The Dalby can be supplied with an outside air kit, which is now a requirement in a lot of new build properties and this version is also available with remote control if required.



AVAILABLE WITH OPTIONAL REMOTE CONTROL

Both versions of the Dalby are suitable for a 12mm hearth.



Dalby

with Log Store

NEW FOR 2012/13



- 5 kW output
- Multifuel
- British Made
- Simple controls
- Optional Outside Air Kit – Manual or Remote Control
- Built in Tertiary Air
- Suitable for 12mm hearth
- 78.9% Efficient on Wood
- 79.6% Efficient on Solid Fuel
- Maximum log length 350mm
- Riddling Grate
- 6" diameter flue (top flue only)
- Brass or St/Steel Fittings
- Weight 61 kg

town & country fires



DALBY

11

With the same specifications as the Dalby shown opposite on page 10, we also manufacture a Dalby with a built-in log store. This stove is suitable for stand alone installations and for larger fireplaces when only 5kW of heat is required.



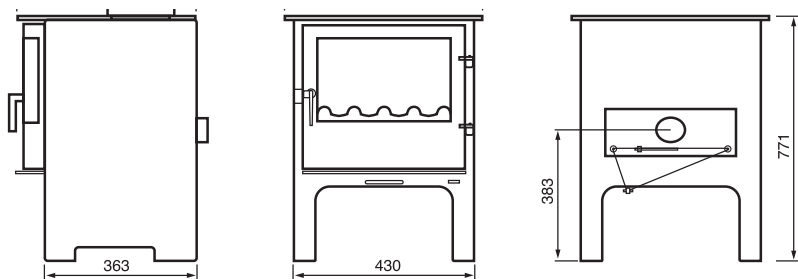
REMOTE CONTROL BOX

The Dalby can be supplied with an outside air kit, which is now a requirement in a lot of new build properties and this version is also available with remote control if required.



AVAILABLE WITH OPTIONAL REMOTE CONTROL

Both versions of the Dalby are suitable for a 12mm hearth.



Whisperdale

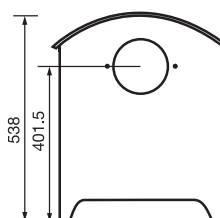
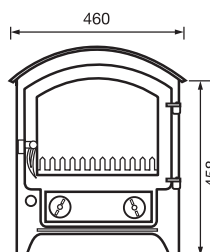
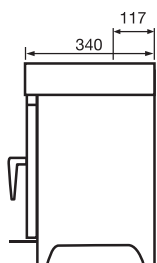
WHISPERDALE

12



- 5kW output
- Multifuel
- British Made
- 78.9% Efficient on Wood
- 79.6% Efficient on Solid Fuel
- 6" Diameter Flue
- Max. Log Length 350mm
- Tertiary Air
- Riddling Grate
- Brass or St/Steel Fittings
- Weight 61kg

A smaller version of the Priory, the Whisperdale is suitable for a small to medium room, with an attractive curved top. There is a good air wash facility and an additional turbo burner, burning off gases towards the rear of the stove which normally do not ignite. This means more efficiency, excellent combustion and a very clean burning stove.



There is a heat shield supplied with this free standing stove, which fits on the back panel.

If this is fitted, allow an additional 30mm to the depth shown on this diagram.

Bransdale

BRANSDALE

13

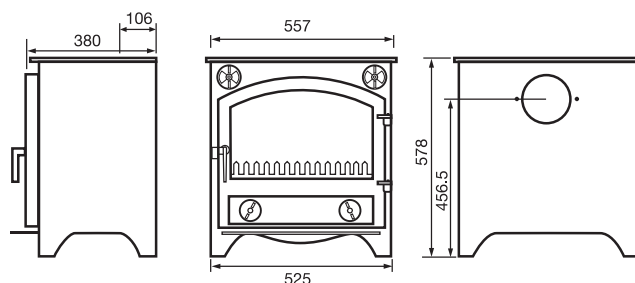


- 8kW output
- Multifuel
- British Made
- 74.4% Efficient on Wood
- 79.3% Efficient on Solid Fuel
- 6" Diameter Flue
- Max. Log Length 440mm
- Brass or St/Steel Fittings
- Weight 100kg

The Bransdale has exceptionally good combustion and is instantly controllable. Once a good fire is established, the stove can be controlled by the two air vents near the top of the stove, making it easy to operate. The Bransdale is beautifully proportioned and the only way to appreciate this remarkable stove is to see it working. The multi-fuel grate will burn wood or solid fuel without any alterations to the grate.

As well as the flat top version, there is also a choice of two canopies, low and high, both are "slide on" and can therefore be added later, and made to suit either a top or rear flue outlet.

As well as the flat top version, there are two optional canopies available for the Bransdale, both available as either a top or rear flue outlet. With a high canopy on a Bransdale, the overall height including stove measures 940mm, and with a low canopy 805mm.



There is a heat shield supplied with this free standing stove, which fits on the back panel.

If this is fitted, allow an additional 30mm to the depth shown on this diagram.

Thornton Dale

THORNTON DALE

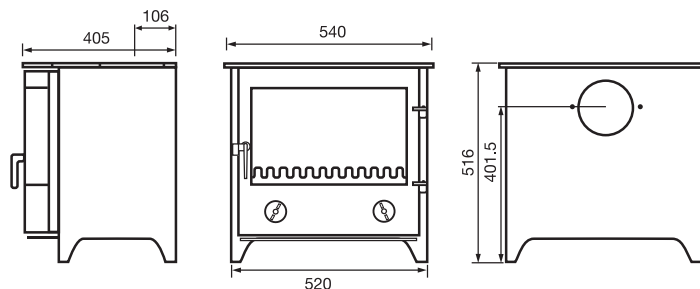
14



- 7.5kW output
- Multifuel
- British Made
- 74.1% Efficient on Wood
- 81.4% Efficient on Solid Fuel
- 6" Diameter Flue
- Max. Log Length 400mm
- Tertiary Air
- Brass or St/Steel Fittings
- Weight 90kg

A contemporary design from Town and Country Fires, a multi-fuel stove with a good sized uncluttered curved glass door, giving an even better view of the fire. It means that you can see the fire when sitting at an angle, not just in front.

There is an excellent combustion and the stove does not require a riddling grate due to a good supply of air burning the fuel to a fine ash. The Thornton Dale is suitable for a medium sized room, having an output of 7.5kW.



There is a heat shield supplied with this free standing stove, which fits on the back panel.

If this is fitted, allow an additional 30mm to the depth shown on this diagram.

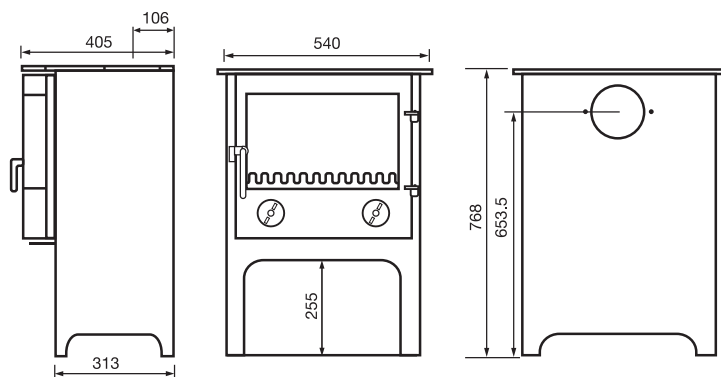
Thornton Dale

with Log Store



- 7.5kW output
- Multifuel
- British Made
- 74.1% Efficient on Wood
- 81.4% Efficient on Solid Fuel
- 6" Diameter Flue
- Max. Log Length 400mm
- Tertiary Air
- Brass or St/Steel Fittings
- Weight 90kg

This is a higher version of the standard Thornton Dale, making this a very good looking stove for a higher opening, and also looks extremely smart free standing, in a more contemporary setting.



There is a heat shield supplied with this free standing stove, which fits on the back panel.

If this is fitted, allow an additional 30mm to the depth shown on this diagram.

Caedmon

CAEDMON

16

NEW FOR 2012/13



- 7.5 kW output
- Multifuel
- British Made
- Simple controls
- Optional Outside Air Kit – Manual or Remote Control
- Built in Tertiary Air
- Suitable for 12mm Hearth
- 76.2% Efficient on Wood
- 78.3% Efficient on Solid Fuel
- Maximum log length 380mm
- Riddling Grate
- 6" diameter flue (top flue only)
- Brass or St/Steel Fittings
- Weight 92 kg

town & country fires

The Caedmon multi fuel stove is an award-winning design, with up to the minute technology. The controls have been simplified, there are two levers below the door, one controls the primary air and the other controls the secondary and tertiary air. These take the place of spin wheels, once the fire is established, there is no need to use the primary air except with smokeless fuel, even on re-fuelling.



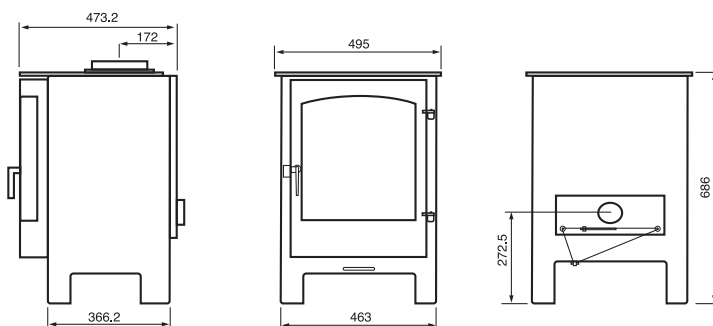
REMOTE CONTROL BOX

The Caedmon can be supplied with an outside air kit, which is now a requirement in a lot of new build properties, and this version is also available with remote control if required.

Both versions of the Caedmon are top flue only and both are suitable for a 12mm hearth.



AVAILABLE WITH OPTIONAL REMOTE CONTROL



Caedmon

Option

NEW FOR 2012/13



CAEDMON

17

- 7.5 kW output
- Multifuel
- British Made
- Panels to reduce combustible distances
- Simple controls
- Optional Outside Air Kit – Manual or Remote Control
- Built in Tertiary Air
- Suitable for 12mm Hearth
- 76.2% Efficient on Wood
- 78.3% Efficient on Solid Fuel
- Maximum log length 380mm
- Riddling Grate
- 6" diameter flue (top flue only)
- Brass or St/Steel Fittings
- Weight 100 kg

town & country fires

The Caedmon Option has choice of all the features of its but also has a wider hotplate with air vents at the sides and convection panels fitted, reducing the distance to combustibles at the sides to 300mm.

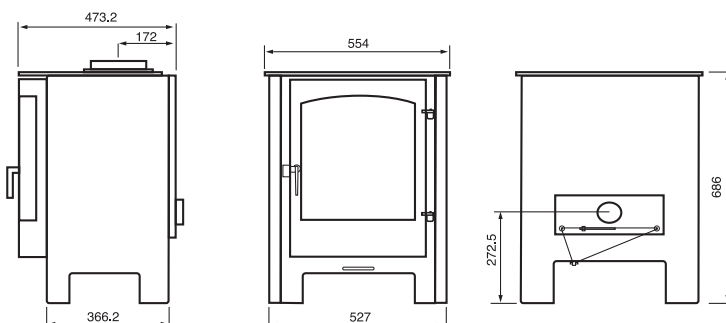


REMOTE CONTROL BOX

The Caedmon Option can be supplied with an outside air kit, which is now a requirement in a lot of new build properties, and this version is also available with remote control if required.



Both versions of the Caedmon are top flue only and both are suitable for a 12mm hearth.



Rosedale

Standard or Smoke Control

ROSEDALE

18



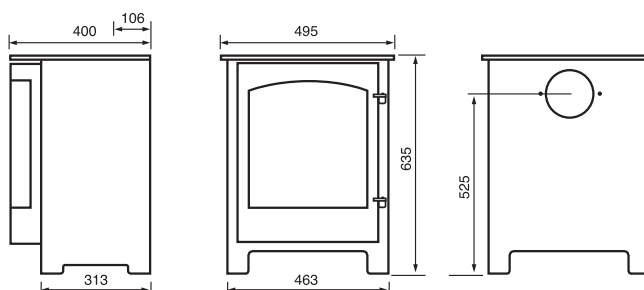
- 7.5 kW output
- Multifuel
- British made
- 77.4 % efficient on wood
- 75.7 % efficient on solid fuel
- 6" diameter flue
- Maximum log length 380 mm
- Tertiary air
- Riddling grate and stainless steel ashpan
- Stainless steel or brass fittings
- Weight 90 kg
- Discreet air control

The Rosedale, modelled on the Welburn but smaller proportions, and like the Welburn available in black or 'silver' finish. The stove is manufactured in Pickering, using high quality British materials. The precision made door has a large curved glass to give an excellent view of the flames, a wonderful feature in any room.

The Rosedale is multifuel, 7.5 kW output and is fitted with our air wash system which keeps the glass beautifully clean.

ROSEDALE SMOKE CONTROL MF STOVE

See opposite page for more details.



There is a heat shield supplied with this free standing stove, which fits on the back panel.

If this is fitted, allow an additional 30mm to the depth shown on this diagram.

Rosedale

Standard or Smoke Control - with Log Store

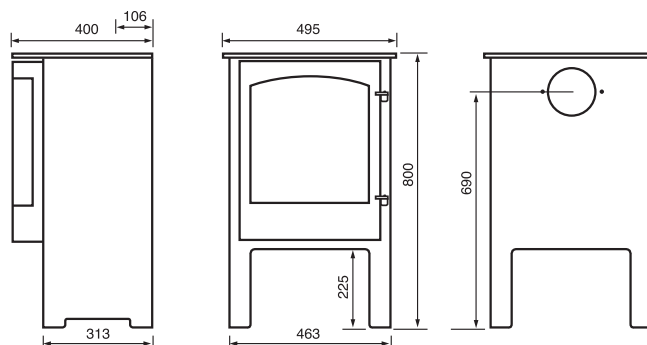


- 7.5 kW output
- Multifuel
- British made
- 77.4 % efficient on wood
- 75.7 % efficient on solid fuel
- 6" diameter flue
- Maximum log length 380 mm
- Tertiary air
- Riddling grate and stainless steel ashpan
- Stainless steel or brass fittings
- Weight 90 kg
- Discreet air control

With exactly the same technical specification, but with a change to the height dimension, this taller version of the Rosedale stove is also available. With it's own built-in log store, this offers a useful feature if your fireplace can accommodate it.

ROSEDALE SMOKE CONTROL MF STOVE

There is also a version of the Rosedale which has been approved by DEFRA to burn wood in a smoke control area. The outer appearance and dimensions are the same as the standard Rosedale and the Rosedale with log store.



There is a heat shield supplied with this free standing stove, which fits on the back panel.

If this is fitted, allow an additional 30mm to the depth shown on this diagram.

Priory

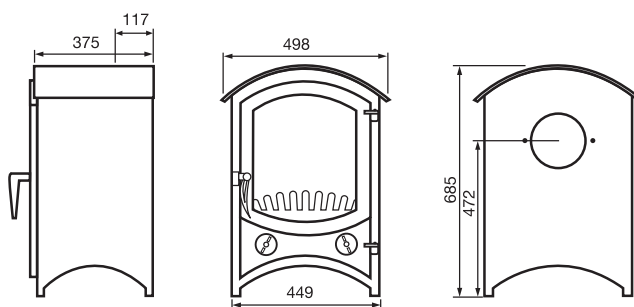
PRIORY

20



- 8kW output
- Multifuel
- British Made
- 74.4% Efficient on Wood
- 78.9% Efficient on Solid Fuel
- 6" Diameter Flue
- Max. Log Length 370mm
- Special curved handle,
Brass or St/Steel Fittings
- Weight 80kg

The Priory will make a good impression wherever it is installed, this fully controllable multi-fuel stove has an attractive curved top, which makes an interesting change. There is a specially designed curved handle, adding to it's contemporary look.



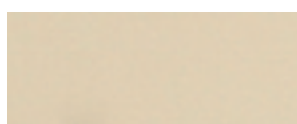
There is a heat shield supplied with this free standing stove, which fits on the back panel.

If this is fitted, allow an additional 30mm to the depth shown on this diagram.

STOVE COLOUR OPTIONS

Our Stoves come as standard in black but the whole range is available in the colours shown below at a small extra charge.

The special paint we use is extremely resistant to high temperatures.



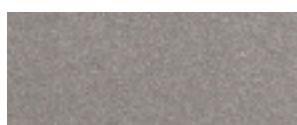
Almond



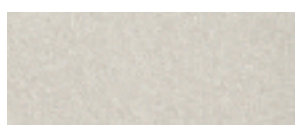
Rich Brown Metallic



Honey Glo Brown



Metallic Brown



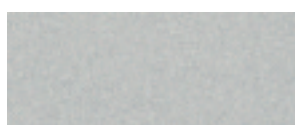
Surf Sand



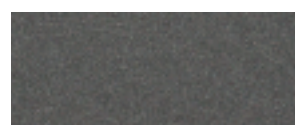
Metallic Blue



Sky Blue



Pewter



Charcoal



Shimmering Rose



Mojave Red



Moss Green Metallic

Please note that the colour chart is intended as a guide only.

FREE 10 YEAR GUARANTEE

Town and Country Fires recommend that stoves are purchased only through a local, approved stockist, and installation must be undertaken by a qualified fitter.

There is a Guarantee form with every stove, this covers the workmanship of the stove for 12 months, but as long as the guarantee form is completed and returned to us and the above conditions have been complied with, then the guarantee is upgraded to ten years.

Your local approved stockist will be able to advise you on suitability and installation. They will also be able to supply you with any spares in the future.



Glaisdale

GLAISDALE

22

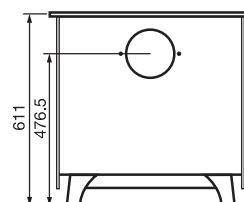
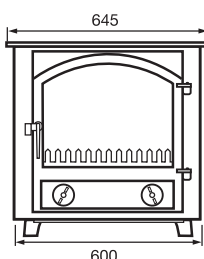
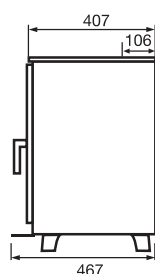


Glaisdale shown with optional Log Store Plinth.

- 10kW output
- Multifuel
- British Made
- 77.2% Efficient on Wood
- 78.9% Efficient on Solid Fuel
- 6" Diameter Flue
- Max. Log Length 500mm
- Brass or St/Steel Fittings
- Weight 116kg

The Glaisdale is a large Town and Country multi-fuel stove, with a 10kW output. As with all the Town and Country stoves, the Glaisdale is solidly constructed, with a cast iron single door and a good sized glass area ensuring there is no interruption to the wonderful view of the fire, the flame picture is mesmerising.

The design is simple, without a lot of unnecessary tubes welded into the stoves, and the combustion and fuel efficiency are excellent. The flat top makes an ideal spot for a kettle or casserole, but canopies are also available if required.



There is a heat shield supplied with this free standing stove, which fits on the back panel.

If this is fitted, allow an additional 30mm to the depth shown on this diagram.

Glaisdale

with Canopies



Glaisdale shown with optional High Canopy.

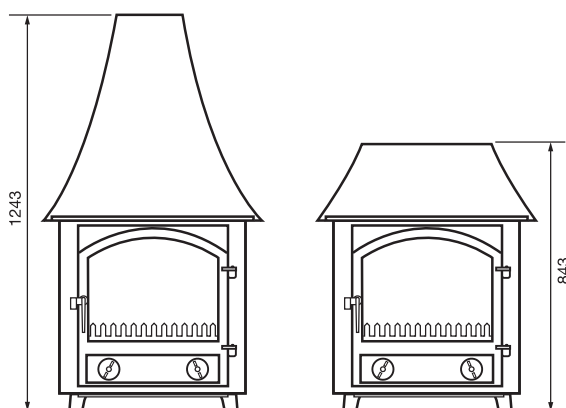


Glaisdale shown with optional Low Canopy and Log Store Plinth.

GLAISDALE

23

All our canopies can be added later, they have been designed to slide onto the side of the hotplate, and come with a cut out at the top to accommodate a top flue, or filled in for a rear flue.

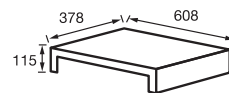


There is a heat shield supplied with this free standing stove, which fits on the back panel.

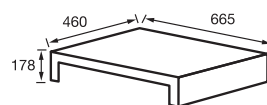
If this is fitted, allow an additional 30mm to the depth shown on this diagram.

Log Store Plinth

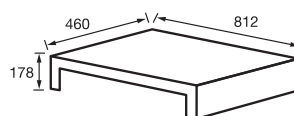
Small Plinth



Medium Plinth



Large Plinth



These log store plinths are designed for Town & Country stoves and are available in these three sizes.

Welburn

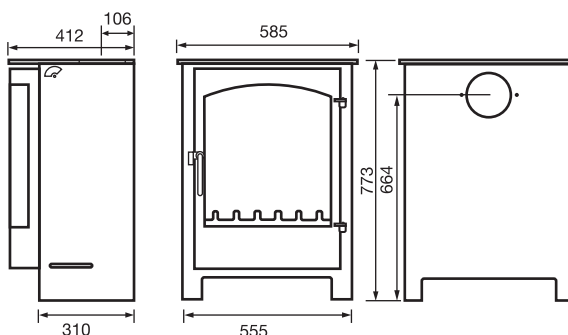
WELBURN

24



- Upto 14kW output
- Multifuel
- British Made
- 77.2% Efficient on Wood
- 70.7% Efficient on Solid Fuel
- 6" Diameter Flue
- Max. Log Length 400mm
- Tertiary Air
- Riddling Grate
- Brass or St/Steel Fittings
- Weight 116kg

The Welburn is one of the new and exciting range of contemporary wood and solid fuel burning stoves from Town and Country Fires. It is available in two styles, one low version and one higher design with a built-in log store, both in either black or silver with stainless steel or brass fittings. The door has a magnificent curved glass giving an amazing view of the fire, this is certainly a focal point for any room.



There is a heat shield supplied with this free standing stove, which fits on the back panel.

If this is fitted, allow an additional 30mm to the depth shown on this diagram.

Welburn

with Log Store



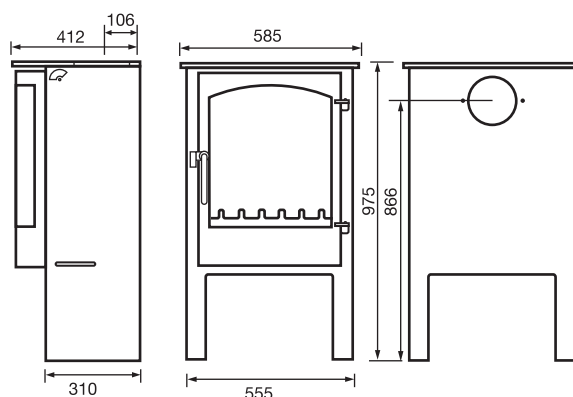
The Welburn, shown here in Pewter.

- Upto 14kW output
- Multifuel
- British Made
- 77.2% Efficient on Wood
- 70.7% Efficient on Solid Fuel
- 6" Diameter Flue
- Max. Log Length 400mm
- Tertiary Air
- Riddling Grate
- Brass or St/Steel Fittings
- Weight 116kg

A higher version of this stove is also available, with it's own built in log store, making this a truly amazing stove.



Our stoves can be finished in a number of colours - See page 21.



There is a heat shield supplied with this free standing stove, which fits on the back panel.

If this is fitted, allow an additional 30mm to the depth shown on this diagram.

Byland

BYLAND

26

NEW FOR 2012/13



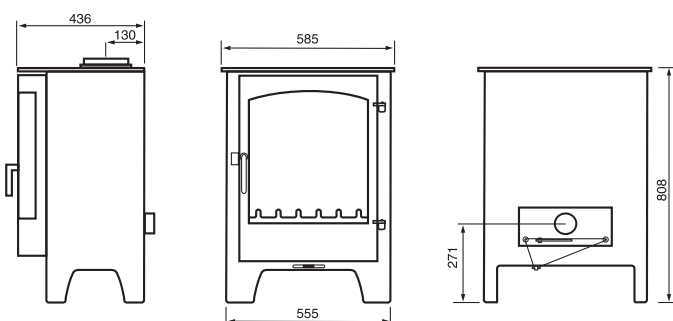
- Up to 14 kW output
- Multifuel
- British Made
- Simple controls
- Optional Outside Air Kit – Manual or Remote Control
- Built in Tertiary Air
- 77.2% Efficient on Wood
- 70.7% Efficient on Solid Fuel
- Maximum log length 400mm
- Riddling Grate
- 6" diameter flue (top flue only)
- Brass or St/Steel Fittings
- Weight 120 kg

town & country fires

A Truly remarkable stove which will be a talking point for years to come. The large curved glass gives a wonderful view of the fire and with the air wash the glass will stay exceptionally clean.

The Byland is capable of up to 14kW output, but is so controllable it will run happily at 5kW.

As with all our new range of stoves, the Byland is controlled by two simple levers which are below the door, and these levers take the place of the spin wheels. One lever controls the primary air, and the second lever controls the secondary and





tertiary air. Once the fire is established, there is no need to use the primary air lever except with smokeless fuel, even when re-fuelling.

The Byland can be supplied with an outside air kit, which is now a requirement in a lot of new build properties, and this version is also available with remote control if required.



REMOTE CONTROL BOX



AVAILABLE
WITH OPTIONAL
REMOTE CONTROL



Remote Control



REMOTE CONTROL



REMOTE CONTROL AIR INTAKE BOX



REMOTE CONTROL SENSOR

The Remote Control is currently an option on three of our stoves and doesn't require mains power, as it is battery operated by a 9V and 4 x AA batteries (supplied).

The handset is the size of a small TV remote and controls the amount of air entering the stove, allowing you to easily adjust the flames and heat from the comfort of your sofa or favourite armchair.

The air intake is positioned on the outside wall of your home where it is cool, away from the heat of the stove.

It is possible to adjust the air intake anywhere between closed and fully open.

The remote sensor is a small, unobtrusive black box which can be positioned near the stove.

The Remote Control is available on the following stoves:



Dalby
Pages 10 & 11



Caedmon
Pages 16 & 17



Byland
Page 26



When the above stoves are installed without the remote control option, a normal air vent is installed.

Runswick

Inset - Mk I

RUNSWICK INSET

28

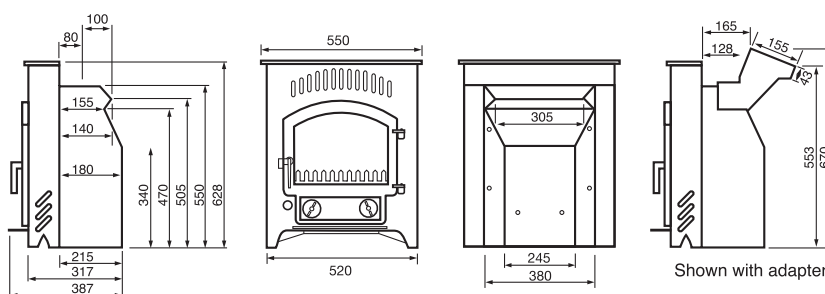


- 4kW output
- Multifuel
- British Made
- 79.9% Efficient on Wood
- 74.8% Efficient on Solid Fuel
- Suitable for a conventional chimney, or with a 6" adaptor to flue liner
- Max. Log Length 300mm
- Riddling Grate
- Brass or St/Steel Fittings
- Weight 72kg

The Runswick is an inset stove, designed so that it is usually possible to install the stove without removing the existing fire back or boiler, without a lot of building work or alterations to the existing fireplace. The Runswick will transform a room by bringing the advantages of a stove, with the minimum upheaval. There will be a marked improvement in efficiency, together with the peace of mind and safety of a stove.

As well as radiant heat from the front of the stove, the Runswick draws in cold air from the room at each side of the front frame, this air is then warmed and convected out through the vents above the door, total output being 4kW,

WILL FIT AN OPENING:	
Width	Height
Min: 390mm	x 555mm
Max: 470mm	x 600mm



Runswick

Inset - Mk II



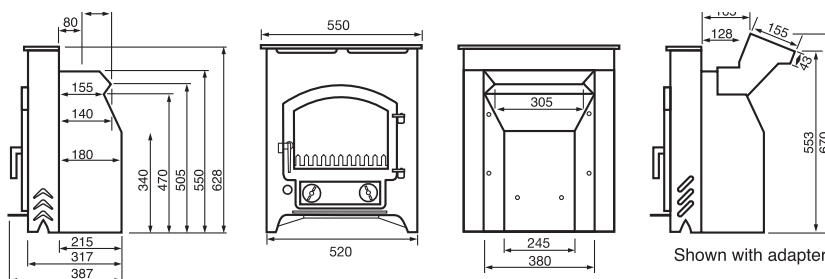
- 4kW output
- Multifuel
- British Made
- 79.9% Efficient on Wood
- 74.8% Efficient on Solid Fuel
- Suitable for a conventional chimney, or with a 6" adaptor to flue liner
- Max. Log Length 300mm
- Riddling Grate
- Brass or St/Steel Fittings
- Weight 72kg

The Runswick MKII has the same output and dimensions as the popular original Runswick, but has been streamlined for a more contemporary style.

As well as radiant heat from the front of the stove, the Runswick MKII draws in cold air from the room at each side of the front frame, and this air is then warmed and convected out through the discreet horizontal vents under the top of the front frame, giving a total output of 4 kW.

The fittings can be brass or brushed stainless steel finish, to suite your style and taste.

WILL FIT AN OPENING:		
	Width	Height
Min:	390mm	x 555mm
Max:	470mm	x 600mm



Rosedale

Inset

ROSEDALE INSET

30



- 5kW output
- Multifuel
- British made
- 78.4% efficient on wood
- 77.2% efficient on solid fuel
- Suitable for a conventional chimney, if a liner is necessary – 150mm diameter
- Max. log length 300mm
- Brass or st./steel fittings
- Weight 80 kg

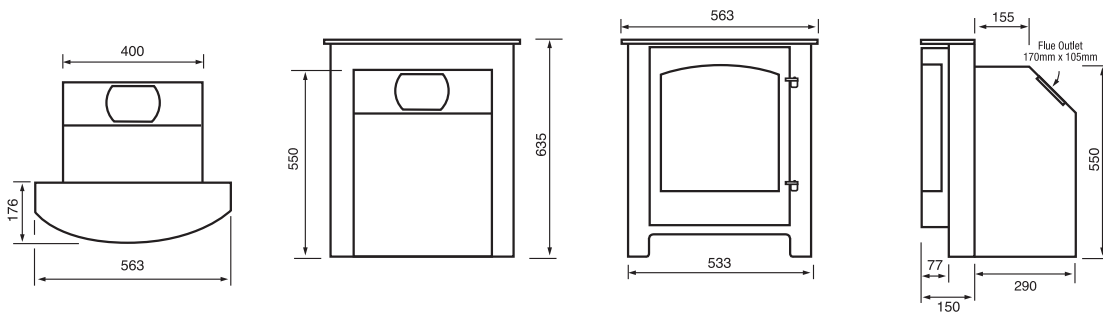
The Rosedale inset stove is a smart, contemporary inset stove with a big curved glass for a good view of the fire. It has been designed to fit into a standard fire opening with a chair brick removed. This provides a good sized firebox which is suitable for logs as well as solid fuel. In addition to the radiant heat, there is a convection system bringing warm air out through the vents above the door, giving a total heat output of 5kW.

SMOKE CONTROL ROSEDALE INSET

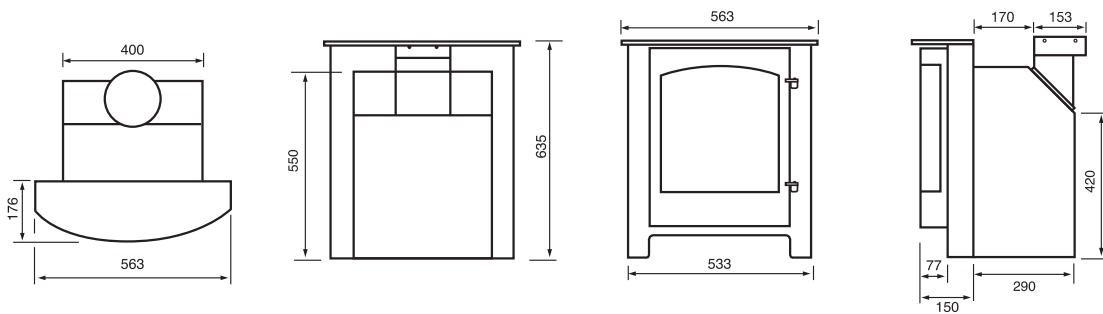
A version of our popular Rosedale Inset that has been approved by DEFRA to burn wood in a smoke control area. The outer appearance and dimensions are the same as the Standard Rosedale Inset.



WILL FIT AN OPENING:		
	Width	Height
Min:	400mm	x 570mm
Max:	470mm	x 600mm



Shown below with optional adaptor for flue liner.



Latest models approved by DEFRA for smoke control areas; please visit our website – www.townandcountryfires.co.uk for any additional approved models.

BROCHURE PAGE	MODEL	OUTPUT	CO emission (wood)	CO emission (solid fuel)	HEIGHT (mm)	WIDTH (mm)	DEPTH (mm)
6	FARNDALE	5 kW	0.38 %	0.20 %	583	474	343
7	RYEDALE	5 kW	0.38 %	0.23 %	586	400	354
8	LITTLE THURLOW	5 kW	0.26 %	0.23 %	516	472	325
9	LITTLE THURLOW WITH LOG STORE	5 kW	0.26 %	0.23 %	711	472	325
10	DALBY	5 kW	0.26 %	0.23 %	542	472	428
11	DALBY WITH LOG STORE	5 kW	0.26 %	0.23 %	711	472	428
12	WHISPERDALE	5 kW	0.38 %	0.23 %	538	460	340
13	BRANSDALE	8 kW	0.16 %	0.19 %	580	557	380
14	THORNTON DALE	7.5 kW	0.37 %	0.28 %	515	540	405
15	THORNTON DALE WITH LOG STORE	7.5 kW	0.37 %	0.28 %	768	540	405
16	CAEDMON	7.5 kW	0.13 %	0.12 %	686	495	473
17	CAEDMON OPTION	7.5 kW	0.13 %	0.12 %	686	554	473
18	ROSEDALE	7.5 kW	0.29 %	0.25 %	635	495	400
19	ROSEDALE WITH LOG STORE	7.5 kW	0.29 %	0.25 %	800	495	400
20	PRIORY	8 kW	0.16 %	0.40 %	685	498	375
22 / 23	GLAISDALE	10 kW	0.12 %	0.40 %	610	645	420
24	WELBURN	8 - 14 kW	0.31 %	0.25 %	773	585	412
25	WELBURN WITH LOG STORE	8 - 14 kW	0.31 %	0.25 %	975	585	412
26 / 27	BYLAND	8 - 14 kW	0.31 %	0.25 %	808	585	436
28	RUNSWICK INSET MK I	4 kW	0.25 %	0.13 %	See page 28	See page 28	See page 28
29	RUNSWICK INSET MK II	4 kW	0.25 %	0.13 %	See page 29	See page 29	See page 29
30 / 31	ROSEDALE INSET	5 kW	0.59 %	0.24 %	see page 30	see page 30	see page 30

FREE STANDING STOVES

INSET STOVES

town & country fires

LOCAL AGENT