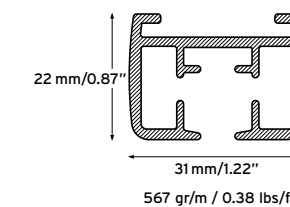
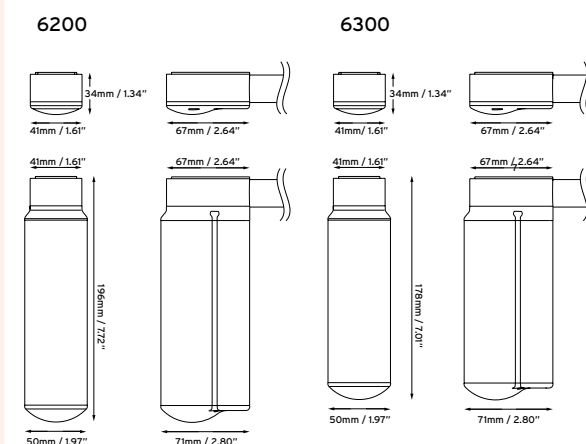




6200 and 6300 motorized 24-V curtain track systems.

Goelst system 6300 is a powerful yet quiet motor suitable for operating both straight and curved tracks. System 6200, with a lower noise level, offers even more power with more luxurious features including: soft launching and docking of the curtains and personalised intermediate stop positions. Furthermore system 6200 can handle curtain weights up to 100 kgs when using a tandem set-up. All systems are made to measure and can be installed without the need of an electrician. Both systems can be controlled by most Home Automation systems and feature integrated RS232 and CAN-BUS ports offering further control options. Manual override (PRS) and G-Rail "Swing" pleating system are available as options.



Specification guide

Materials:

Aluminium EN AW-6060 T66 (higher specification than DIN 1725). Shape and size tolerances are in accordance with EN 12020 (DIN 17615). White (RAL 9010), natural metallic (RAL 9006) and black (RAL 9005) powder coated in accordance with the Qualicoat standard.
Profile weight: 567 gr per linear metre / 0.38 lbs per foot.

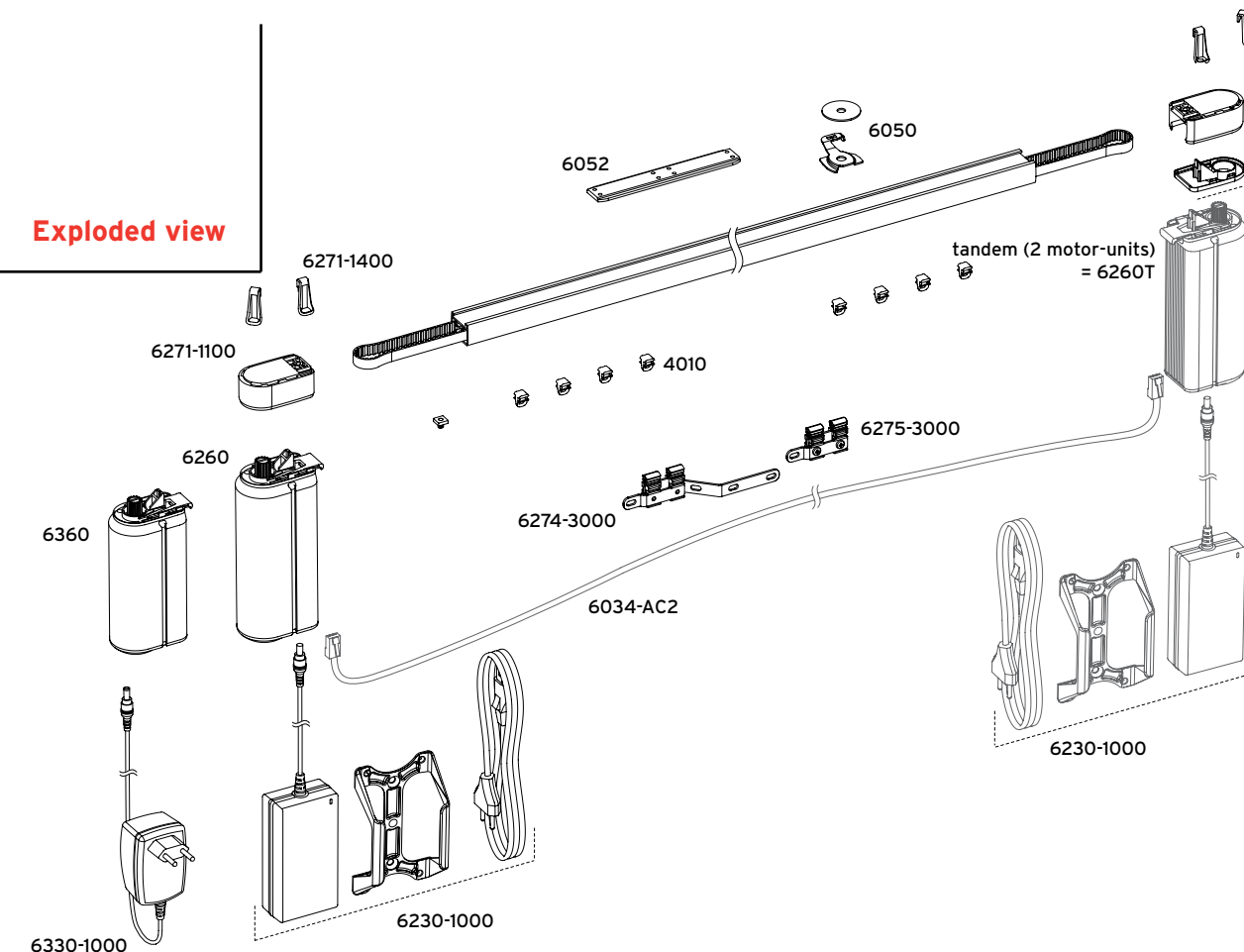
Installation:

General advice for installation: an extra bracket should be installed at each curtain stacking position. Bracket fixing centres 60-80 cm / 23.6"-31.5".
Ceiling fixing: Maximum weight per clamp 6050 10 kg / 22lbs. Max. weight per bracket 6055-1000 (for heavy curtains) 25 kg / 55lbs. Also use bracket 6055-1000 with special curves.
Wall fixing: Maximum weight per bracket 6051 (projection 4 cm / 1.6") 10 kg / 22 lbs. Max. weight per adjustable bracket 6057 (projection 7-15 cm / 2.9"- 5.9") 10 kg / 22 lbs. Max. weight per bracket 6015: 5 cm - 10 kg, 7,5 cm - 8 kg and 10 cm - 5 kg / 2"-22 lbs, 2.9"-17.6 lbs and 3.9"-11 lbs.

Bending:

Radius 20 cm, 30 cm / 7.9", 11.8": Bending machine 1015
40 cm, 50 cm / 15.7", 19.7": by Goelst / G-Rail
Greater than 1 m / 39.4": Bending machine 1018

Exploded view



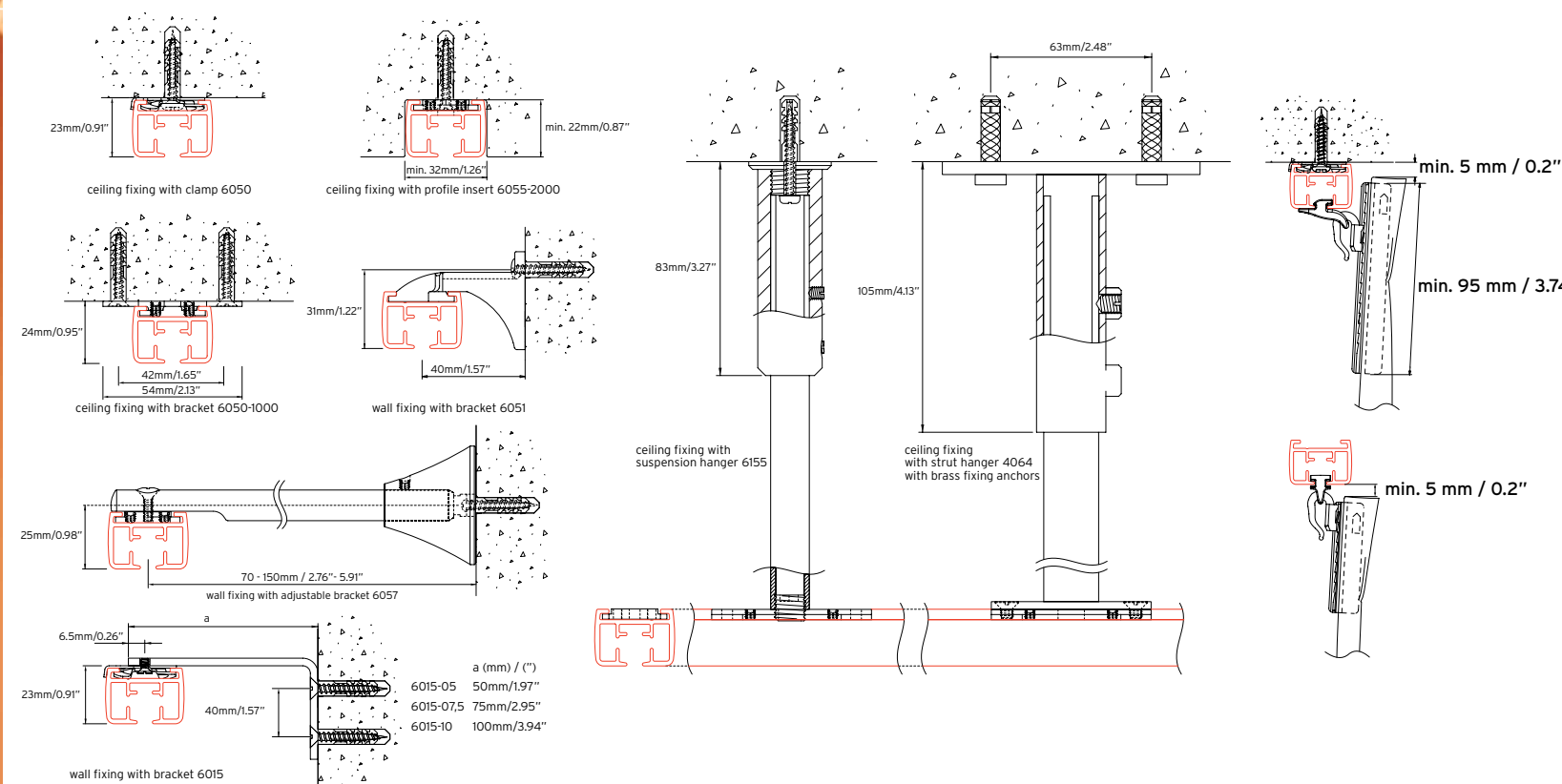
ELECTRIC CURTAIN RAIL

6200, 6300



6200, 6300 > The electric curtain rail system.

Installation



Load table

curvature	Glider	6300	6200	6200-Tandem	6200-Tandem
		<10m/33 ft	<12m/39 ft	<12m/39 ft	12 to 18m / 39 to 59 ft
straight	4010, 4020, 4030	max. 40kg / 88lbs	max. 60kg / 132lbs	max. 100kg / 220lbs	max. 80kg / 176lbs
	6010				
1 curve or multiple curves ≤ 90° in total	4010, 4020, 4030	max. 30kg / 66lbs	max. 50kg / 110lbs	max. 90kg / 198lbs	max. 70kg / 154lbs
	6010				
2 curves 90° - 180° in total or large curve/oval	4010, 4020, 4030	max. 20kg / 44lbs	max. 40kg / 88lbs	max. 80kg / 176lbs	max. 60kg / 132lbs
	6010				

Tandem = two motor-units driving a single track.

Ensure sufficient clearance between the moving curtain and the track, the floor and/or walls.
6300 7m-10m / 9.8ft- 33ft = split stack.

For sloping installations or for systems longer than given in the load table - please enquire.

Maximum loads: per glider 4010 : 3 kg / 6.6 lbs
per glider 4020 : 8 kg / 17.6 lbs
per roller 4030 : 1,5 kg / 3.3 lbs
per glider 6010 : 0,5 kg / 1.1 lbs (for curved systems: allow a minimum of 12 gliders per metre / 4 gliders per foot)



Specifications

Standard functions	6200 / 6200-T (tandem)	6300
Soft launching speed	•	•
Soft docking speed	•	•
Intermediate positions (adjustable)	5 (IR, RS232)	
Mechanical end position (adjustable)		•
Electric end position (adjustable)	•	
Timer (IR)	•	•
Green mode (low energy use)	on request	•
Program functions		
With IR remote control	•	•
With RF remote control	•	•
With external 2 No dry contacts	•	•
With buttons on underside of the motor-unit	•	•
LED indicators	•	•
Reverse open and close direction	•	•
Adjustable speed (customer software)	•	
Adjustable power (customer software)	•	
Control options		
Infrared (IR)	•	•
Radio frequency (RF)	•	•
2 No potential dry contacts (standard)	•	•
Dry contacts individual, group and master control	•	•
Alarm control (high speed)	•	
RS232 (standard)	•	•
CAN-BUS (standard)	•	•
Dawn / dusk sensor	•	•
Timer control (external)	•	•
Hotel Motion Sensor	•	•
Showroom auto timer	•	•
Hand operation (PRS)	•	•
Installation		
Motor-up	•	•
Ceiling fixing	2 options	2 options
Wall fixing	3 „	3 „
Suspended fixing	2 „	2 „
Recessed fixing	1 „	1 „
Technical		
max. curtain weight	60 kg - 132lbs / 100 kg - 220lbs	40 kg - 88lbs
max. system length	18 m - 59ft	10 m - 33ft
Bending radius	20, 30, 40, 50, >100 cm 7.9", 11.8", 15.7", 19.7", >39.4"	20, 30, 40, 50, >100 cm 7.9", 11.8", 15.7", 19.7", >39.4"
Shapes types	special bends possible	max. 2 90° bends
Colours	white, natural metallic, black	white, natural metallic, black
Voltage	24VDC	24VDC
Power	43 W	20 W
Speed	15 cm/sec - 5.9"/sec (electronic)	13 cm/sec - 5"/sec (average speed)
Noise level	< 40 dB(A)	< 50 dB(A)
Assembly types		
Single stack	•	•
Split stack	•	•
Extra stacks	•	•
Asymmetric stack	•	•
Curtain types		
Standard curtain (with and without overlap)	•	•
Curtain with heading (with and without overlap)	•	•
Swing (with and without overlap)	•	•

6200, 6300

ELECTRIC CURTAIN RAIL

6200, 6300



GOELST
INTERIOR PRODUCTS

G-Rail is a registered Trademark. **G-RAIL**

Components

Product design and specification changes reserved.

MOTOR		CURTAIN TRANSPORT CLASSIC		WALL FIXING	
	6260-1030 motor-unit 6200 6260T-1030 2 motor-units 6200 tandem 6360-1030 motor-unit 6300 colours: NM - W - ZW		6274-3000 carrier with overlap colours: NM - W - ZW		6155 suspension hanger for 6200 incl. adapter (6159-10) colours: N - W
	Motor UP 6260-1030-UP motor-unit 6200 6260T-1030-UP 2 motor-units 6200 tandem 6360-1030-UP motor-unit 6300 colours: NM - W - ZW		6275-3000 carrier without overlap colours: NM - W - ZW		4064-10 base plate colours: NM - W
	6230-1000 power supply for 6200 and 6200-T, incl. support also available for UK and US colours: W		4010 glider (on strip) colours: B - G - W - ZW		4064-40 hanger tube colours: NM - W
	6330-1000 power supply for 6300 also available for UK and US colours: W		4020 heavy duty glider colours: W - ZW		4064-30W-62 fixing set incl. ceiling rose colours: W
	6030-DR-075 6030-DR-120 6030-DR-240 6030-DR-480 DIN-rail power supply		4030 roller colours: B - G - W - ZW		6057 adaptable wall bracket 7 cm - 15 cm / 2.8"-5.9" colours: NM - W
	6034-AC2 data cable for tandem various lengths available colours: GR - W - ZW		6010 projection glider colours: W		6051 wall support 4 cm / 1.6" projection colours: GR - W - ZW
	6200 aluminium profile colours: NM - W - ZW		Swing see Swing folder		6015-10 10 cm / 3.9" 6015-07,5 7,5 cm / 3" 6015-05 5 cm / 2" wall bracket incl. fixing clamp 6050 colours: N - W
	6220 drive belt 10 mm / 0.39"		PRS see PRS folder		6059 wall return set (L&R) 15 cm, for wall and ceiling mounting can be trimmed (min 9 cm / 3.5") colours: W
	6271-1000 pulley set colours: GR - W - ZW		6050 ceiling fixing clamp incl. washer		6052 connecting bridge
	6271-10UP-L pulley set for motor-UP left, incl. ceiling plate		6055-1000 ceiling fixing plate colours: N - W		6048-1001 paddle switch 6048-1001-03 paddle switch incl. 3m / 9.8ft cable colours: W
	6271-10UP-R pulley set for motor-UP right, incl. ceiling plate		6055-2000-35 (35mm screw) 6055-2000-45 (45mm screw) profile insert for recessed fixing, incl. special screw - pre-drilling 6200 profile by Goelst / G-Rail		<p>IR RF Domotica</p> <p>The extensive range of control options are featured in our 'Control' brochure. Alternative control options are available on request.</p>
	6271T-10UP pulley set for motor-UP tandem, incl. ceiling plate colours: GR - W - ZW				

ELECTRIC CURTAIN RAIL

6200, 6300

B = Bruin
G = Gold
GR = Grey
N = Natural
NM = Natural Metallic
W = White
ZW = Black

▲ = Standard item
Ⓢ = Registered design
Ⓟ = Patented design

G-RAIL

© Copyrights etc. Goelst Nederland B.V.
www.goelst.com

Space for dealer address

05/2011