



MOTORIZED FLEXER SETTING SYSTEM (MFS)

The new option allows for faster, more precise adjustment of the flexer unit.

Flexing precuts the rounding and is thus an important part of the rounding process. By drawing on empirical values obtained over many years in tough production environments and using finite element simulations, we have made significant improvements to the geometries of our SOUCAN flexer units. However, we cannot exploit the full potential of a flexer system, no matter how good, unless it is correctly adjusted. And given today's continuously growing requirements, precise flexer wedge adjustment is crucial.

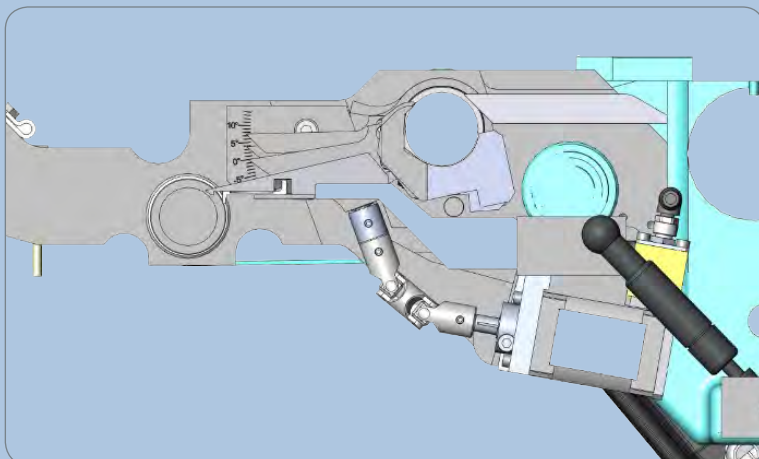
It enables:

- Higher cycle rates
- Higher rounding speeds
- Thinner blank thicknesses
- Higher yield strengths

The tried-and-tested primary function of flexing remains unchanged. However, we have now succeeded in automating the entire adjustment process for the flexer wedge:

- Release
- Adjust
- Fasten

These adjustments are controlled via the user-friendly UNICONTROL Graphical User Interface.

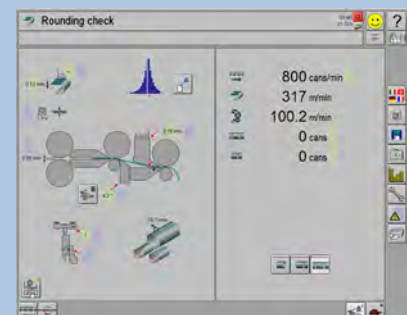


ADVANTAGES

- Increased line efficiency.
- Adjustment takes just a few seconds.
- The adjustment process is monitored by the control unit.
- Adjustments are stored in a database, and full reproducibility is thus ensured.
- The flexer function can be monitored and corrected via the control panel.
- When used with ARS, automated flexer wedge adjustment is an easy way of achieving better rounding wedge adjustment.

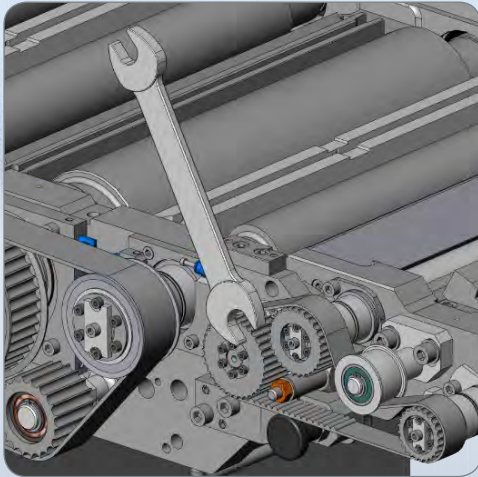
RETROFITTING

Can be retrofitted on request.

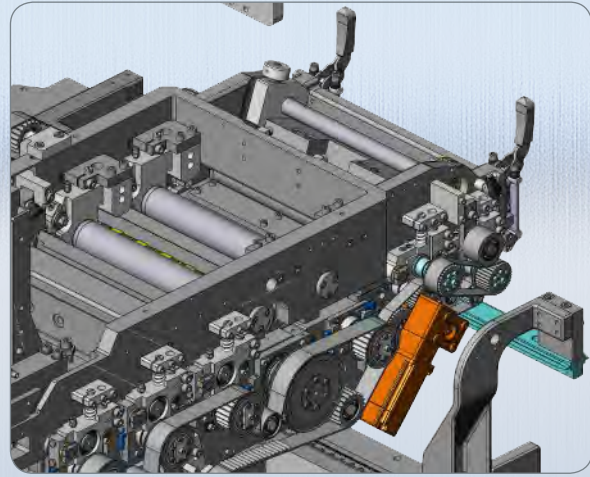


SOUCAN series 800/1000/2000 units are designed to make use of the new option.

RELEASE / CLAMP FLEXER

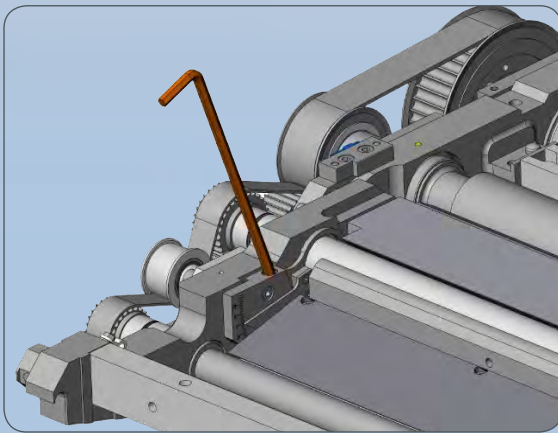


Manual

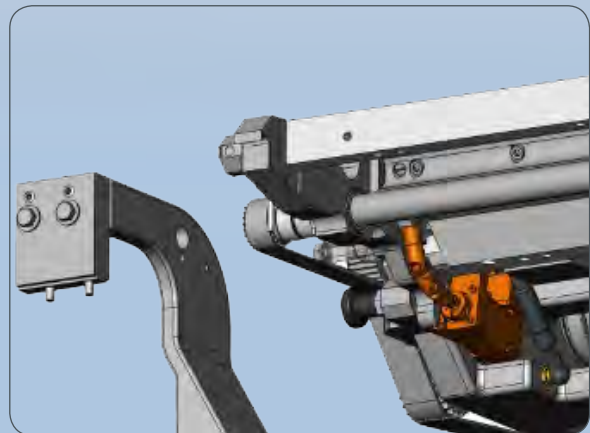


Motor-operated

ADJUST FLEXER



Manual



Motor-operated

Technology that keeps you ahead

Soudronic

Soudronic AG Industriestrasse 35 CH-8962 Bergdietikon +41 44 743 66 66 info@soudronic.com www.soudronic.com