

W&H PEACOCK

AUCTIONEERS & VALUERS

DECEMBER SALE OF
*Antique Furniture & Collectors' items,
Jewellery & Watches*

VIEWING

Antique Furniture & Collectors' Items Jewellery & Watches

Friday 30th November – 9am to 8pm,
Saturday 1st December – 9am to 4pm,
Thursday 6th December – 9am to 6pm,
Morning of sale from 9am

AUCTION

Antique Furniture & Collectors' Items Jewellery & Watches

Friday 7th December 2018
Commencing at 11am

Jewellery & Watches

Friday 7th December 2018
Commencing at 4pm

LIVE INTERNET BIDDING



CATALOGUES

£5 by post, online at
www.peacockauction.co.uk

W&H PEACOCK
AUCTIONEERS & VALUERS

Do you have bottles of wine and spirits to sell at auction?

We invite entries of vintage and classic wines and spirits as well as more everyday drinks and we are happy to give free sales value advice. Contact the auctioneer Chris Armstrong wine@peacockauction.co.uk. We can accept entries at any of our Auction Centres or valuation days.

Bedford Auction Centre

Eastcotts Park, Wallis Way, Bedford, Bedfordshire MK42 0PE
01234 266 366 or wine@peacockauction.co.uk

www.peacockauction.co.uk

*Furniture, Rugs
Works of Art and Clocks*



Furniture, Rugs Works of Art and Clocks



Lot 1

1
A 17th century and later walnut chest-on-stand, the arrangement of seven drawers over a shaped apron on turned legs joined by stretchers, w. 104 cm *£500 - £800*

2
A late 17th century and later walnut chest-on-stand, the arrangement of five drawers over oak turned legs joined by stretchers, w. 97 cm *£150 - £200*

3
A late 17th century and later oak coffer, the front with four carved panels, on shaped stiles, l. 125 cm *£100 - £150*

4
A 19th century mahogany and strung commode with faux front drawers on bracket feet, w. 66 cm *£40 - £60*

5
A Georgian mahogany and gilt metal mounted square piano by Alexander Calder, l. 168 cm *£150 - £200*

6
An early 20th century mahogany and upholstered armchair with an X-type frame *£40 - £60*

7
A Georgian mahogany three-tier pot stand with a single central drawer on square straight legs, w. 36 cm *£40 - £60*

8
A Louis XV-style giltwood and gold upholstered armchair on cabriole legs *£40 - £60*



9

An Art Deco walnut dining suite in the manner of Epstein including a drawer-leaf dining table with one fitted leaf, 137 cm to 197 cm, four 'cloud'-style chairs, a demi-lune cocktail cabinet with a mirrored interior and fitments and a matching part-tambour sideboard, l. 164 cm *£500 - £800*



Lot 10

10

A Regency four-section rosewood canterbury with a single drawer, on turned legs with castors *£200 - £300*

11

A Victorian mahogany bow fronted chest of two short over three long drawers on turned feet, w. 95 cm *£60 - £100*

13

A Victorian mahogany extending dining table on turned legs with castors, with two fitted leaves, 104 cm to 189 cm *£250 - £300*



Lot 12

12

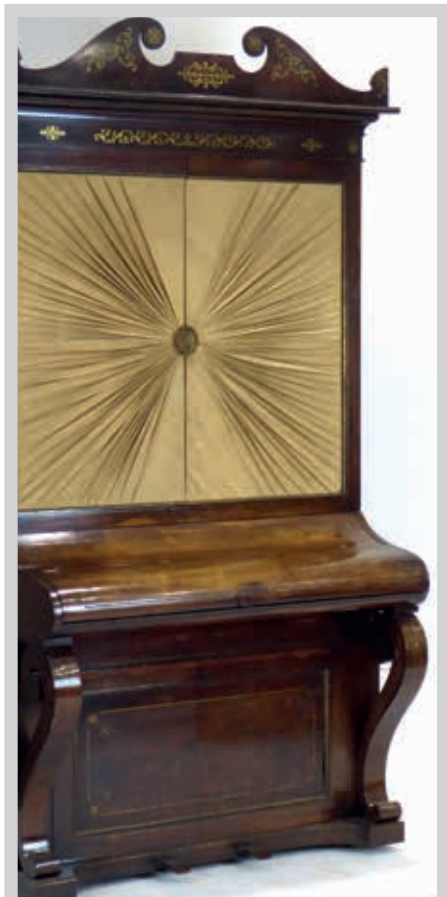
A Victorian walnut dressing table mirror, the oval plate on a platform base, h. 80 cm *£40 - £60*



Lot 13

All estimates exclude buyer's premium of 21% including VAT which is payable in addition

 @WHPeacock  /WHPeacockAuctioneers



14

An upright combined barrel piano by Henderson, London, later converted into a bookcase, with a rosewood and brass inlaid case, under a matching pediment, h. 215 cm

£100 - £200

15

A late 19th/early 20th century walnut and ebony strung pier mirror with an architectural pediment, 227 x 86 cm

£150 - £200

16

A late 19th/early 20th century walnut and ebony strung pier mirror with a figural carving and shell pediment, 215 x 92 cm

£150 - £200

17

An early 18th century and later oak armoire, w. 138 cm

£60 - £100

18

An American reproduction chest-on-stand, the eleven drawers over a shaped apron on cabriole legs, by Pennsylvania House, w. 103 cm

£200 - £300

19

An eighteen-drawer mahogany haberdashery cabinet, w. 118 cm

£300 - £400

20

A late 19th century Scandinavian mahogany and crossbanded chest of four graduated drawers on bracket feet, w. 111 cm

£150 - £200

21

An oak and overpainted 'marriage' trunk with a dome top, l. 132 cm

£100 - £150



Lot 16



Lot 18

22
An early 19th century mahogany and strung side/tea table with a folding surface over a single drawer, on square tapering legs, w. 101 cm *£120 - £150*

23
A Victorian mahogany turned standard lamp on a tripod base *£40 - £60*

24
A late 19th century/early 20th century papier mache, black lacquered and gilt highlighted tray table, w. 79 cm *£50 - £80*

25
A late 19th/early 20th century kilim, the red ground decorated with geometric motifs and animals, within matching borders, 193 x 143 cm *£80 - £120*

26
A group of six late 19th century and 20th century rugs including three with Heriz-type patterns and red grounds, a Tekke-type rug with eight medallions and two others *£50 - £80*

27
A George II-type wall mirror, the rectangular plate within a yew and ebony strung frame of typical form, h. 76 cm *£60 - £100*



Lot 28

28
A Commercial Arts & Crafts oak umbrella/ stickstand, together with a three-divide oak stand *£60 - £80*

29
A Georgian mahogany corner washstand, w. 55 cm *£40 - £60*

30
A William IV mahogany two-tier table with a single drawer, turned supports, painted caps and castors, the drawer stamped for 'James Winter, 101 Wardour St. Soho London', w. 56 cm *£200 - £300*



Lot 30

31

A George II-type wall mirror, the rectangular plate within a mahogany frame of typical form, h. 79 cm *£80 - £120*

33

A Regency mahogany tea table, the folding surface over a turned column, platform base and decorative feet, w. 92 cm *£100 - £150*



32

A Sarook-Kashan silk rug, 120 x 180 cm *£200 - £300*

34

A Newlyn wrought iron and beaten copper fire screen, stamped, h. 73 cm *£60 - £100*

35

A Falkirk Foundry cast iron stick and umbrella stand, c. 1880, h. 76 cm *£100 - £150*

36

A late 19th/early 20th century and later wingback armchair with mahogany feet and castors *£30 - £40*

37

A brass and copper adjustable standard lamp in the manner of W.A.S. Benson *£100 - £150*



Lot 35

38

A mahogany mirror, the domed top surmounted by a foliate finial, h. 134 cm *£60 - £80*

39

A late 19th/early 20th century walnut and ebony strung pier mirror, 141 x 75 cm *£60 - £80*

40

A set of eight mahogany dining chairs with shell pediments over drop-in seats on cabriole legs, including two carvers *£300 - £400*

41

A 19th century walnut octagonal tilt-top table on a mahogany tripod base, w. 56 cm *£40 - £60*

42

A Georgian mahogany and ebony strung tilt-top occasional table on a turned column with three splayed feet, w. 51 cm *£30 - £50*

43

A late 19th century ash and oak Windsor armchair *£60 - £80*



Lot 34

44

A Georgian and later oak lowboy with a single frieze drawer on turned supports joined by matching stretchers, w. 79 cm *£80 - £120*

45

A 19th century figural carved oak side chair with a drop-in seat over a shaped apron on turned legs *£100 - £150*

46

A 19th century mahogany and strung writing table with a tooled leather surface over a single drawer, on turned legs, w. 115 cm *£50 - £80*

47

An early 20th century woolen rug with a red ground, together with three other rugs and a wall hanging *£80 - £120*

48

An Edwardian mahogany, crossbanded and marquetry revolving bookcase with a serpentine top, h. 84 cm *£80 - £120*

49

An Edwardian walnut, crossbanded and marquetry revolving bookcase, h. 83 cm *£60 - £100*



Lot 50

50

An 18th century and later oak chest with an intricately carved front, on square straight stiles, w. 75 cm *£100 - £200*

51

A set of four Georgian oak provincial dining chairs with drop-in seats *£80 - £120*

52

A 19th century Continental oak and upholstered armchair with a cross stretcher *£80 - £120*

53

A set of six 19th century mahogany, marquetry and wheat sheaf carvers *£200 - £300*



Lot 40

All estimates exclude buyer's premium of 21% including VAT which is payable in addition

 @WHPeacock  /WHPeacockAuctioneers



Lot 54

54
 A set of five Regency mahogany dining chairs with interlaced backs over drop-in seats on square tapering legs, including one carver
£150 - £200

55
 A set of four early 19th century mahogany and brass inlaid dining chairs with rope-twist backs
£100 - £150

56
 A carved oak armchair with a bergere back and a red leather seat over a shaped apron
£200 - £300

57
 An ebonised and gilt highlighted stool with an upholstered seat
£30 - £50



Lot 56



Lot 58

58
 A Victorian mahogany and upholstered stool on cabriole legs
£100 - £150

59

A William IV mahogany side table with three drawers on turned tapering legs, w. 123 cm *£100 - £150*



Lot 59

60

A Victorian mahogany dressing table mirror with barley twist supports and a platform base, h. 60 cm *£40 - £60*

64

A matched set of eight mahogany and marquetry shield-back dining chairs, including two carvers *£250 - £300*

61

An 18th century and later walnut, crossbanded and strung bureau, the fall front enclosing a fitted interior over three graduated drawers on bracket feet, w. 45 cm *£150 - £200*

65

An 18th century and later oak and iron bound dome topped trunk, l. 134 cm *£300 - £400*



Lot 61

66

A 19th century walnut and marquetry overmantle mirror, 77 x 51 cm *£40 - £60*

67

A pair of late 18th century carved oak dining chairs with drop-in seats *£40 - £60*

68

A set of eight 19th century mahogany dining chairs on cabriole legs with ball and claw feet, including two carvers *£100 - £150*

69

A Georgian mahogany occasional table, the rectangular tilt-top on a turned column and three splayed feet, w. 68 cm *£40 - £60*

70

A 19th century mahogany and embroidered firescreen, h. 113 cm *£20 - £30*

62

A set of four late 18th/early 19th century mahogany dining chairs with green leather seats on square tapering legs *£80 - £120*

Lot 65

63

A George III mahogany, ebony strung and rosewood crossbanded Pembroke table with a single drawer, on tapering legs, w. 74 cm *£100 - £150*



71

A Georgian mahogany occasional table, the circular tilt-top on a turned column and tripod base, d. 60 cm *£40 - £60*

72

A George III mahogany serpentine fronted side table with a single drawer on square legs, w. 89 cm *£150 - £200*

73

A George III mahogany dining table comprising of two D-ends, a central section and two fitted leaves, max. l. 282 cm *£200 - £300*

74

An early 20th century rug, the red ground with a hunting scene, within matching blue and red borders, 211 x 140 cm, together with a red prayer mat *£60 - £80*

75

A late Georgian mahogany dining table, reducing to a side table, with a concertina folding base and two additional leaves, in the manner of Robert Wright of Bond Street, Hull, 64 cm to 324 cm *£1000 - £1500*

76

A Georgian oak bureau, the fall front over three long graduated drawers, w. 68 cm *£80 - £120*

77

Spare Lot

78

An 18th century and later oak coffer with a carved front on square stiles, w. 130 cm *£120 - £150*



Lot 79

79

An early 20th century low upholstered armchair with mahogany feet on castors, in the manner of Howard *£300 - £500*

80

A late 19th/early 20th century low open armchair with a walnut frame and green upholstery, in the Continental manner *£100 - £150*

81

An 18th century oak and crossbanded dresser, the plate rack with two doors and three tiers over the base with an arrangement of six drawers and two doors l. 186 cm *£600 - £800*

82

A pair of Victorian mahogany and needlework footstools *£40 - £60*

83

A set of twelve Queen Anne-style walnut dining chairs, including two carvers *£250 - £300*



Lot 75



Lot 81

84

A walnut twin-pedestal dining table, with two fitted leaves, max. l. 334 cm *£250 - £300*

85

A late 19th/early 20th century mahogany sideboard decorated with Art Nouveau scrolls and marquetry, the mirrored back over a break-front and pair of glazed and leaded doors, on ball and claw feet, w. 118 cm *£200 - £300*

86

A 20th century Tabriz carpet, the red ground with a central medallion within matching bands, 397 x 285 cm *£100 - £150*

87

A 20th century woolen carpet, the red ground with a central medallion surround by foliate sections and bands, 338 x 262 cm *£100 - £150*

88

An Edwardian mahogany and glazed corner bookcase, w. 127 cm *£100 - £150*

89

A Tribal birthing chair constructed of a carved back and interlocking seat *£80 - £120*

90 - 100

Spare Lots

101

A meerschaum-type figural pipe together with a pipe modelled as a scaled claw *£40 - £60*

102

A group of badges relating to the Royal Masonic Benevolent Institute, St Andrew's Lodge, RMIG etc., including two silver gilt examples *£60 - £80*

103

A late 19th century French carriage timepiece in a brass and five-glass case, h. 12 cm *£40 - £60*

104

A Vickers 205-IN M.G. Mk. II clinometer, dated 1942, and a Clinometer Sight Mark IV, dated 1944 *£50 - £80*



Lot 111

108

An album of Penny Red postage stamps, 71 through 225, excluding 75 and 77, together with sixteen further examples *£200 - £300*

109

A faux crocodile skin figural letter opener *£30 - £50*

110

A group of postcards including several locomotives by London & North Western Railway Company, First World War battleships, The Cornish Riviera Express etc. *£40 - £60*

111

A W.M.F. pewter desk tidy of Art Nouveau form, the lidded inkwell beside a pen tray, w. 33 cm *£100 - £150*

112

A silver and enamelled desk timepiece by Mappin & Webb, h. 7.5 cm, together with an eight-day leather cased travelling timepiece *£60 - £80*

105

A mid-18th century turned mahogany wig powdering carot with a rosewood section and a horn mouthpiece, l. 30 cm *£400 - £600*

Lot 105



106

An album of 1910's to 1930's autographs including the 1935-36 All Black team *£60 - £100*

113

A pair of First World War medals awarded to DM2-224275 Pte. J. Pick A.S.C. including a Victory Medal and a War Medal, together with a 1939-1945 War Medal, a France and Germany Star, a silver sporting medallion etc. *£40 - £60*

114

A pair of Asprey mother-of-pearl and green leather opera glasses, in a later clutch bag *£30 - £50*



107

Two 1840 Penny Black postage stamps, A-B and A-K *£150 - £200*



115

A group of First World War notes, hand and typewritten, together with a group of luggage labels, enveloped prescriptions and other ephemera relating to the Earl of Sandwich
 £40 - £60

116

An early 20th century pressed felt and fabric doll modelled as a lady in an embroidered dress
 £30 - £50

117

A group of collectables including silver sporting badges, a silver-bladed fruit knife, an Eastern pot and cover, an Art Nouveau-type door plate etc.
 £60 - £80

118

C. Graham: 'The World's Fair in Watercolours', a folio of lithographic prints relating to the Columbian Exposition, 1893
 £40 - £60

119

G. Sandilands: 'Famous Watercolour Painters II.- W. Russell Flint, A.R.A.', 1928, a book of lithographic plates after the artist
 £30 - £40

120

An album of photographs relating to car racing from the 1960's, most annotated with the event, driver and vehicle
 £100 - £120

121

A rosewood and marquetry flutina with sixteen treble keys and two bass keys, by Busson, Paris, within a mahogany case
 £40 - £60

122

Phoebe Stabler, a brass figure modelled as a young girl, on a rosewood base, inscribed and dated 1916, h. 29 cm
 £100 - £150

123

A 1965 Austin Productions figure modelled as a seated cat, on a teak base, h. 31 cm
 £40 - £60

124

A group of five 19th century and later brass and pewter chambersticks
 £30 - £40





Lot 125

125

A Comitti of London mantle clock, the movement striking on a bell, the enamelled dial with Roman numerals, within a mahogany and marquetry case, with brass bun feet, h. 25 cm
£100 - £150

126

A group of three 19th century pewter plates, together with two similar plates *£40 - £60*

127

A Second World War Type P6 Spitfire compass, No. 15066.D. *£30 - £50*

128

A 19th century rosewood and brass strung sewing box with a fitted interior, w. 32 cm
£60 - £80

129

An early 20th century box carved in the Chinese manner with dragons and leaves, w. 36 cm *£40 - £60*

130

A 19th century walnut and brass bound writing slope, w. 40 cm *£30 - £50*

131

A 19th century figured walnut and brass bound writing slope, w. 51 cm, together with a mahogany and brass bound slope *£60 - £80*

132

A 19th century figured walnut and brass strung sewing box with a fitted interior and some mother-of-pearl and bone fittings, w. 27 cm
£50 - £80

133

A 19th century rosewood box with a mother-of-pearl presentation plaque, w. 28 cm, together with a walnut and marquetry box *£40 - £60*

134

A mid-18th century mahogany and rosewood crossbanded tea caddy on gilt metal bracket feet, w. 24 cm *£30 - £50*

135

A 19th century mahogany and brass bound writing slope, w. 51 cm, together with a similar smaller slope *£60 - £80*

136

A 19th century carved oak collectors cabinet, the fall-front with armorial decoration opening to reveal two swing doors and a fitted interior with eleven drawers, surmounted by a pair of doves, w. 30 cm *£100 - £150*

137

A Victorian plaster plaque relief decorated with the incarnation stable interior, behind an oval convex glass cover within an ebonised frame, 40 x 32 cm *£30 - £50*

138

A Meadows & Bennett of Ipswich copper finished samovar, h. 38 cm *£40 - £60*

Lot 136



139

An early 20th century timepiece, the face with Roman numerals, within a cast metal case, h. 24 cm *£30 - £50*

140

A 1930's German mantle clock, the Junghans movement striking on five chimes, within a mahogany case, h. 42 cm *£100 - £150*

141

H. Cochran: a longcase face with date aperture and secondary dial decorated with a hunting scene, together with a group of other clock faces and parts *£50 - £80*

142

A 19th century partial double clock movement with twin dials operating in opposing directions *£60 - £100*

143

J.W. Benson, London, a circular wall clock, the painted face with Roman numerals, within a mahogany case, d. 32 cm *£100 - £200*



Lot 144

144

RM Wanzer & Co. (Richard Mott), a 19th century manual sewing machine in gilt lacquered black metal, on a matching marble plinth, h. 26 cm *£350 - £450*

145

An Eastern charger finely decorated in red enamels with charging creatures, d. 24 cm *£20 - £30*

146

An African Tribal knobkerrie *£30 - £40*

147

A South African spear/assegai *£40 - £60*

148

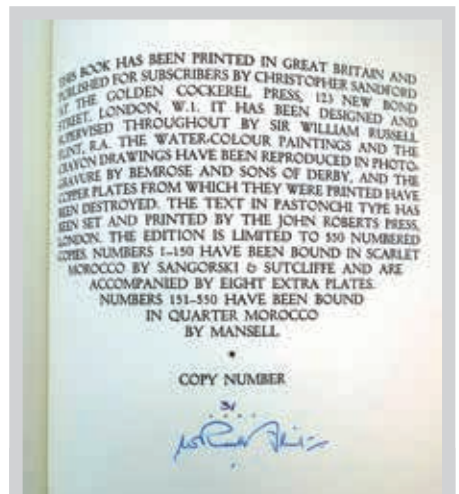
A group of tribal-type equipment including a machete, a bow and arrows, spear etc. *£20 - £30*

149

K. Serkisoff & Co., Constantinople, a metalwares pocket watch with a later movement, housed in a chromium watch stand, together with a similar pair of garnitures and the original watch movement stamped Billodes *£50 - £80*

150

A First World War regimental embroidery relating to 11th Hussars Prince Albert's Own, 69 x 73 cm *£50 - £80*



151

Sir William Russell Flint R.A.: 'Minxes Admonished' or 'Beauty Reproved', 'Fugitive pieces now rendered permanent aesthetical anecdotes and disputatious encounters philosophically presented', bound in scarlet morocco by Sangorski & Sutcliffe, accompanied by eight extra plates, 31/550, Golden Cockrel Press *£200 - £300*

152

Mary Anne Harrison, aged 10: an 18th century illustrative sampler, 35 x 27 cm *£80 - £120*

153

A 'Sestrel' ship's binnacle compass with a dome cover, by Henry Browne & Son, No. 31276, h. 16 cm *£40 - £60*

154

A sport chronometer by Wempe, Hamburg, No. 3333 *£100 - £150*



155

A 19th century timepiece, the gilt figural case under a glass dome, h. 43 cm *£100 - £200*

156

A 20th century mantle clock, the German movement striking on a bell, the enamelled face with Roman and Arabic numerals named Regnant, A.Paris, with a marble and gilt metal figural case, h. 61 cm *£100 - £150*



Lot 156

157

A large group of 20th century driving and riding gloves, scarfs etc. including some silk examples *£30 - £50*

158

A French sequined clutch bag with simulated pearls, together with two feather hand fans *£30 - £40*

159

A 1930's wall clock, the silvered dial with Arabic numerals, within a walnut and crossbanded case, h. 36 cm *£40 - £60*

160

A carved figure modelled as a saint, h. 61 cm, a similar overpainted spelter figure and two wall carvings *£60 - £80*

161

A group of vintage French hats, a leather cased sewing set with bone fitments, a mask, a compact etc. *£50 - £80*

162

A leather case containing a suite of Pit-a-Pat series miniature/doll's house furniture £30 - £40

163

A Sorrento walnut and marquetry 'puzzle' box, w. 26 cm £40 - £60

164

A 19th century pewter three-handled tankard with a glass base, inscribed 'J.E.B.E. Sliding Trial Eights 1896', h. 22 cm £40 - £60

165

A Regency rosewood and crossbanded dome topped tea caddy on brass bun feet, w. 25 cm £80 - £120

166

A 19th century watchmaker's lathe, inscribed 'John James 1859', w. 38 cm £100 - £150

167

Annie Cole Maulden, Board School, Age 11, 1883: an alphabetical sampler, 29 x 25 cm, together with another sampler, dated '93 £60 - £100

169

A 1986 Carey Adina white ostrich skin handbag £30 - £40



Lot 170

170

Mary Ellen Law, Convent Day School, Northampton, Aged 11, 1872, an alphabetical sampler, 39 x 32 cm £40 - £60

168

An early 20th century parasol with an ebonised shaft and metalwares handle £30 - £50



Lot 160



171

Two albums of postage stamps including a Penny Black, L-K, a group of Penny Reds and other later stamps £100 - £150

172

G.E. Brightman: a carved oak butler's tray, w. 59 cm £20 - £30



Lot 175



173

Two needlework and lace shawls/throws decorated in the Oriental manner £40 - £60

174

A pair of six-branch gilt candelabrum with porcelain plaques, under glass domes, overall h. 60 cm £200 - £300

175

A pair of lead urns relief decorated in the Neo-Classical manner, h. 45 cm £250 - £350

176

An early 20th century oak cased aneroid barometer in a carved case of architectural form, h. 118 cm £60 - £100

177

A crocodile skin, l. 181 cm £20 - £30

178

A set of three 1940/50's brass coloured wall-lamps with arched shafts and open shades £80 - £120

179

A 1970's brass finished wall mirror, the frame with Fleur-de-Lis motifs, d. 47 cm £30 - £40

180

D. Pitt, Frome, a longcase clock, the brass face with Roman and Arabic numerals, etching, secondary dial and date aperture, within a later carved oak case £200 - £300

181

A chrome plated ship's bell converted into a ceiling light, h. 53 cm £100 - £150

182

An Edwardian Sol-Perams pram by Simmons, Bermondsey, c. 1912 £100 - £150



Lot 184

183

A late 19th century and later Sol-Perams pram by Simmons, Bermondsey, c. 1895 £100 - £150

184

A late 19th century brass precision theodolite by Carl Bamberg, Friedenau, No. 6478, on an ebonised tripod stand £300 - £500

185

An Italian plafonnier/chandelier by Veneziana, the gold finished mounting plate supporting four tiers of cruciform glass elements/lustres £200 - £300



Lot 186

186

John Hall & Co., Manchester: a 19th century carriage clock, the French movement striking on a gong, the enamelled face with Roman numerals, within a brass and five glass case, h. 15 cm, with a leather case £200 - £300



Lot 187

187

A 19th century Prisoner of War incised bone games set, l. 15.5 cm, the sliding top marked for cribbage and opening to reveal a set of bone dominoes £300 - £400

188

A pair of early 20th century tortoise-shell spectacles with a 9ct gold bridge, in a leather case £40 - £60



Lot 189

189

An Austrian cold painted bronze ink stand by Franz Bergman, modelled as a young Arab gentleman lying beside a table smoking a hookah pipe, the table top hinged and opening to a recess formerly housing an inkwell, foundry marks to the underside, w. 15 cm £300 - £500



Lot 190

190

A Regency tortoise-shell tea caddy of serpentine form surmounted by a metalwares goat, on bun feet, h. 17 cm £400 - £500

191

A 19th century French strutt timepiece, the enamelled face with Arabic numerals, within a gilt metal figural case, bearing a presentation inscription, h. 29 cm
£100 - £150



Lot 191



Lot 193

192

J.W. Benson, 25 Old Bond Street, London: a mantle clock, the movement striking on a bell, the face with Arabic numerals, within a gilt metal case of architectural form, h. 25 cm
£250 - £300



Lot 192

193

A late 19th/early 20th century strutt timepiece, the enamelled face with Arabic numerals, within a gilt metal figural case, bearing a 1905 presentation inscription, h. 33 cm
£120 - £150

194

A hardwood carved wall plaque, stained and incised, depicting a hunting party smoking around a table, 53 x 78 cm
£80 - £120

195

James Niccoll, Canongate: an 18th century longcase clock, the face with a silvered dial, Roman and Arabic numerals, secondary dial, date aperture and brass spandrels, within a mahogany case
£300 - £500

196

A late 19th/early 20th century rug, the red ground decorated with a Tekke-type pattern, 152 x 134 cm
£200 - £300

197 - 243

Spare Lots



Lot 195

Pictures & Prints



Pictures & Prints

244

Winifred Austin (1876-1964),
'Little Lovelies',
signed and inscribed in pencil,
artists' proof etching, image
17 x 25 cm

£40 - £60

245

J. M.. (?)Botice,
A view of St Marks Square, Venice,
indistinctly signed and dated 1869,
watercolour,
32 x 28 cm

£40 - £60

246

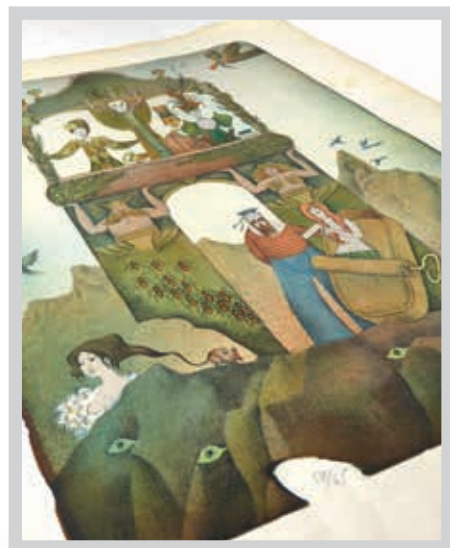
Late 19th/early 20th century,
A study of a cobbled street,
bears paper label verso,
watercolour,
24 x 16.5 cm

£40 - £60

247

David Green (d. 2013),
'Oakley, Beds',
signed and inscribed,
watercolour,
31 x 47 cm

£40 - £60



248

David Green (d. 2013),
'Lower Dean',
signed and inscribed,
watercolour,
33 x 46.5 cm

£40 - £60

249

Pauline Girardin (19th/20th century),
A study of a bouquet of flowers,
signed,
watercolour,
29.5 x 37.5 cm

£40 - £60

250

English School, late 19th/early 20th century,
A view of Durham Cathedral,
indistinctly signed,
watercolour,
44.5 x 62 cm

£80 - £120

251

After Lefler,
'Love and Jealousy',
coloured reproduction,
29 x 68 cm

£40 - £60

252

John Charles Moody, R.E, R.I, P.S.G.A,
(British, 1884-1962),
'Lincoln',
signed and inscribed in pencil,
monochrome etching,
26.5 x 36.5 cm

£40 - £60

253

John Wolseley (Australian/British b. 1938),
'Cycle of Love No. 1' and 'Cycle of Love No. 5',
signed in pencil,
artist's proof,
50 x 77 cm and 72 x 86 cm respectively

£100 - £150

254

After Adolf Born (1930-2016),
a fantastical landscape,
signed and numbered 57/65,
limited edition lithograph,
image 49 x 32.5 cm

£50 - £80

255

Spare Lot

256

T. Cook after William Hogarth (1697-1764),
'O Vanity of Age',
engraving from the Rakes Progress series,
34 x 40 cm, together with four others in the
same series (5) *£50 - £80*

257

Late 19th/early 20th century School,
Figures and donkeys at rest in a stable interior,
coloured reproduction,
28 x 40.5 cm,
in a verre eglomise frame *£30 - £50*

258

Early 20th century School,
A head and shoulders study of a young lady
wearing a blue dress,
unsigned,
watercolour,
8 x 6 cm, oval *£30 - £40*



Lot 259

259

Friedrich Feigl (1884-1965),
Dancing figures,
signed in watercolour and inscribed in pencil 'for
Mr Trevor Thomas, Xmas 1940',
watercolour,
19 x 13.5 cm *£200 - £300*

260

Abraham Hulk Junior (1851-1922),
A coastal landscape,
signed,
watercolour,
20 x 29.5 cm *£30 - £50*

261

Sue Cook (20th century),
'Old Bow',
signed and inscribed in pencil,
12 x 15 cm, together with another work by the
same hand, a pair (2) *£40 - £60*



262

Attributed to Thomas Musgrave Joy
(1812-1866),
A head and shoulders portrait of Miss Eliza
Sanders,
unsigned,
pencil sketch,
20 x 15 cm *£150 - £200*

263

(?) Cluke (20th century),
A head and shoulders portrait of a female,
indistinctly signed and dated '90,
coloured pastels,
22 x 16 cm *£20 - £30*

264

Late 19th/early 20th century School,
A young girl reading by a window,
signed with the monogram HH,
watercolour,
16 x 12 cm *£30 - £40*



Lot 269 (part)

265

In the manner of David Cox Junior,
A figure on horseback by a loch,
unsigned,
watercolour,
20.5 x 30 cm

£60 - £80

268

In the manner Sylvester Stannard,
Trees in autumn,
unsigned,
watercolour,
36 x 25.5 cm

£60 - £100

266

Jenny Wiggins (20th century),
A study a goldfinch,
signed and dated 1982,
watercolour,
24.5 x 29.5 cm,
together with another work by the same hand, a
pair (2)

£60 - £80

269

Francisco J. Torrome (flourished 1890-1908),
Cavalier's at chase,
signed and dated 1917,
watercolour,
32 x 50 cm, together with another work by the
same hand, a pair (2)

£300 - £400

267

John Farquharson,
Figures on a beach,
signed,
watercolour,
26 x 41.5 cm

£60 - £80

270

David Green (d. 2013),
'Titchmarsh Mill',
inscribed,
watercolour,
34 x 50 cm

£40 - £60

271

David Green (d. 2013),
 'Thatch Cottages at Everton',
 signed and inscribed,
 watercolour,
 33 x 53 cm *£40 - £60*

272

Attributed to Sir William
 Russell Flint (1880-1969),
 A full length study of Cecilia
 Green wearing a white gown,
 bears signature,
 watercolour,
 34.5 x 25 *£600 - £1000*

273

After Sir William Russell Flint
 (1880-1969),
 'Eve, the girl with bobbed hair',
 signed in pencil,
 coloured reproduction,
 image 30.5 x 22.5 cm, together
 with two limited edition prints,
 both unsigned but numbered
 127/850 (3) *£150 - £200*

274

James Lloyd (1905-1974),
 'Three dogs by a wall',
 signed, gouache,
 24 x 34 cm
 *Bearing a Portal Gallery
 label verso

275

Thomas Bush Hardy (1841-1894),
 'Sailing boats at a bustling harbour',
 signed,
 watercolour,
 44 x 71 cm

276

Alexander Henry Hallam Murray (1854-1934),
 'Ponte di Castel Vecchio, Verona',
 signed and inscribed,
 watercolour,
 24 x 34 cm

**277**

E.. K.. Weller,
 'A rolling landscape',
 signed,
 watercolour,
 27 x 37 cm

278

Alf. H.. Green,
 'Mountain Torrent from Llyn Park',
 signed with a monogram,
 watercolour,
 31 x 52.5 cm

279

Marcus Ford (1914-1989),
 'Sizewell',
 signed,
 oil on canvas,
 44 x 82 cm

*£400 - £500**£150 - £200**£60 - £100**£20 - £30**£60 - £80**£80 - £120*



Lot 280

280

Gordon King (b. 1939),
'Surf Girl',
signed,
oil on canvas,
34 x 24 cm

£500 - £700

281

W.. H.. Strong,
Figures by a thatched cottage at sunset,
signed,
oil on canvas,
40 x 60.5 cm

£60 - £80

282

Arthur Verey (1840-1915),
Figures rowing by a lake,
signed,
oil on canvas,
42.5 x 59.5 cm

£500 - £800



Lot 282



Lot 287

283

Late 19th/early 20th century School,
A thatched cottage under snow,
unsigned.
oil on board,
28 x 58 cm

£30 - £50

286

English School, late 19th/early 20th century,
Sheep at rest on a village lane,
unsigned, oil on artists' board,
14 x 21 cm, together with another by the same
hand, a pair (2) £150 - £200

284

20th century School,
A study of a mill,
indistinctly signed,
oil on canvas,
50.5 x 60.5 cm

£50 - £80

287

Thomas Ivester Lloyd (1873-1942),
Hounds chasing a hare over a ditch,
signed,
oil on canvas,
19.5 x 39.5 cm £80 - £120



Lot 285

285

Eric Seeley,
'Embrace',
signed and dated '97,
oil,
12 x 15 cm

£40 - £60

288

Christopher Hollick (b. 1946),
'River Blyth looking across to Walberswick',
signed,
acrylics,
19 x 24 cm £40 - £60

289

English School, 20th century,
A woodland study,
unsigned,
oil on artists' board,
19 x 27.5 cm £30 - £40

290

Vica Mason (20th century),
'Summer Meadows',
unsigned by labelled verso,
oil on artists' board,
34 x 44 cm £60 - £80

291

Dutch School, 19th century,
A Festive market under snow,
unsigned,
oil on paper laid onto board,
16 x 22 cm, together with three further works in
the same manner (4) *£250 - £350*

292

Circle of William Etty, R.A. (1787-1849),
Classical nude scene depicting Venus and
Cupid,
signed with initials,
oil on board,
30 x 39 cm *£250 - £350*

293

English School, 19th century,
A half length study of a broad shouldered
gentleman wearing a white cravat,
unsigned,
oil on canvas,
28.5 x 23.5 cm *£50 - £80*



Lot 294

294

David Green (d. 2013),
'Late Autumn Landscape, Colmworth',
signed and inscribed to card verso,
oil on canvas,
33 x 53 cm *£60 - £80*

295

David Green (d. 2013),
'Autumn Sunshine near Colmworth Church',
signed and inscribed verso,
oil on artists' board,
24 x 34 cm *£60 - £80*



Lot 295

296

David Green (d. 2011),
'The First Snow of Winter'
signed, dated verso 1986,
oil,
35 x 54 cm *£50 - £80*

297

Emerson Harold Groom (1890-1983),
'Derwent Water from Falcon Crag, Cumbria',
signed,
oil on board,
39 x 48 cm *Bearing a presentation plaque
'Presented to Sir John Laing C.B.E. by his
friends in John Laing and Son Limited 24th
September 1969 *£40 - £60*

298

Barlow Moore (1834-1897),
'St Michaels',
signed,
oil on panel,
24 x 29 cm *£120 - £150*

299

Joubert,
Cattle in a woodland setting,
signed,
oil on artists' board,
39 x 54 cm *£60 - £100*

300

Joubert,
Cattle drinking from a stream,
signed,
oil on artists' board,
44 x 54.5 cm *£60 - £100*

331 - 337

Spare lots



Lot 291



Lot 292



W&H PEACOCK
AUCTIONEERS & VALUERS

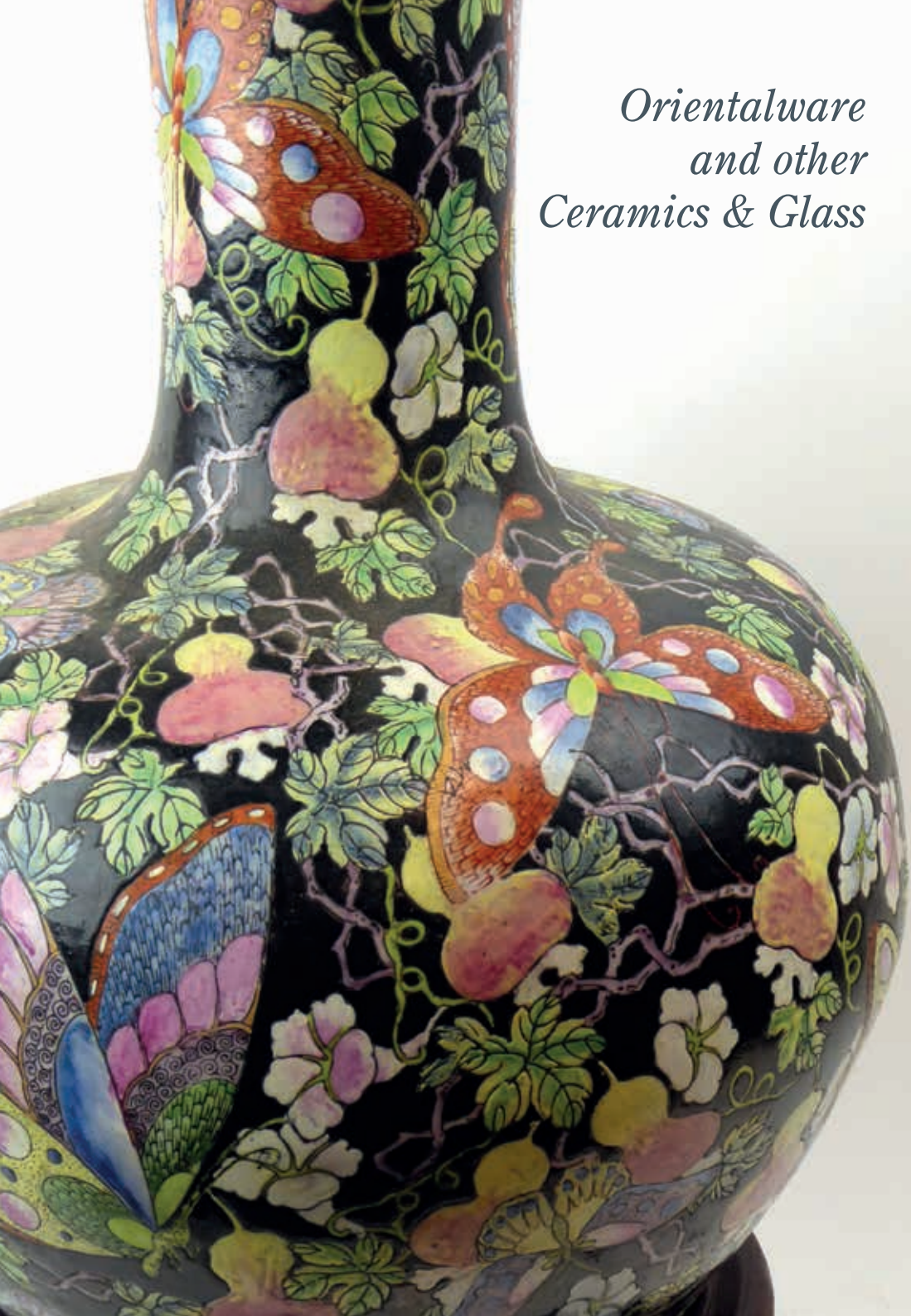
Do you have unwanted hand and power tools in your shed, garage or workshop?

*Let us auction
them for you!*

Bedford Auction Centre
Eastcotts Park, Wallis Way, Bedford, Bedfordshire MK42 0PE
01234 266 366 or wine@peacockauction.co.uk

www.peacockauction.co.uk

*Orientalware
and other
Ceramics & Glass*



Orientalware and other Ceramics & Glass

337

An early 20th century Chinese long stitch panel depicting objects within a foliate border, 32 x 32 cm *£30 - £40*

338

A mid 20th century Chinese long stitch panel depicting storks beneath pine trees, 34.5 x 157 cm *£50 - £80*

339

A Chinese carved and painted pine figure modelled as the standing Buddha, h. 45.5 cm *£100 - £150*

340

A modern Chinese blue and white jar and cover of ovoid form typically decorated with pine trees and blossoming branches, h. 37.5 cm *£30 - £40*

341

An early/mid 20th century Chinese floor vase of bottle form decorated in coloured enamels with butterflies and fruiting vines on a famille noir ground, six character mark to base, on a hardwood stand, vase h. 51 cm *£60 - £100*



Lot 339



Lot 341



Lot 342

342

An 18th century Chinese Export bowl decorated in coloured enamels with traditional court scenes, d. 26 cm (af) *£100 - £150*



Lot 343

343

A 19th century Cantonese bowl decorated in coloured enamels with butterflies on a green leafy ground, d. 29 cm (af) *£100 - £150*

344

A Chinese Yixing novelty stoneware teapot with squirrel finial and pine tree body, impressed mark to base, h. 9.5 cm *£20 - £30*

345

A lacquered and mother of pearl inlaid brush/glove box of rectangular form, w. 28 cm, together with a novelty tomb figure and two guards *£40 - £60*

346

A Chinese blue and white ginger jar and cover decorated in the prunus blossom pattern, h. 24.5 cm *£40 - £60*



Lot 347

347

A pair of early 20th century Chinese brush pots of cylindrical form decorated with stylised flowerheads on a blue ground, h. 28 cm, character marks to base *£80 - £120*



348

A Chinese blue and white stoneware vase of octagonal baluster form decorated with elders and warriors amongst a traditional ground, h. 44 cm *£80 - £120*

349

A Tibetan painted and carved wood figure modelled as the Buddha in meditation, h. 37.5 cm *£40 - £60*

350

A pair of early 20th century Chinese Export carved bone candlesticks, h. 23 cm *£50 - £80*

351

An early 20th century Cantonese bowl, typically decorated in coloured enamels with figures at leisure, six character mark to base, d. 25 cm, together with a similar figure modelled as a cat (2) *£50 - £80*



Lot 350

352

Spare lot

353

A pair of Cantonese jars and covers of cylindrical form decorated with exotic birds amongst blossoming branches, character marks to base, h. 15.5 cm *£40 - £60*

354

A Chinese clear glass snuff bottle internally decorated with a pony, signed, h. 11 cm, lacking stopper *£40 - £60*

355

A Chinese blue and white plate decorated with a pair of tight-rope walkers, d. six character mark to base, d. 22.5 cm, together with five further items of blue and white ceramics (6) *£60 - £100*

356

A Chinese blue and white footed bowl decorated with foliate scrolls, four character mark to base, d. 20 cm, together with three further similarly decorated items (4) *£60 - £100*

357

A Chinese blue and white saucer dish centrally decorated with a dragon within a scrolled border, six character mark to base, d. 14.5 cm, together with a pair of blue and white tea bowls and a further item (4) *£60 - £100*

358

A Chinese saucer dish decorated in coloured enamels with a cockeral, hens and chicks, six character mark to base, d. 13 cm, together with a Cantonese tea bowl and a stoneware vase (3)
£40 - £60

359

A Chinese blue and white cargo dish centrally decorated with a stylised fish, d. 17.5 cm (af)
£20 - £30

360

A pair of Chinese eggshell tea bowls of flared form, each incised with a dragon to the exterior, d. 8 cm
£30 - £40

361

A pair of Chinese pottery foo dog figures decorated in coloured enamels, h. 10 cm, together with a miniature cloisonne vase and a shallow satsuma dish (4)
£30 - £50

362

A Chinese carved lidded container modelled as a crab, w. 17.5 cm, together with a further container modelled as a tortoise and a figure modelled as a water buffalo (3)
£30 - £50

363

A pair of modern Chinese vases of baluster form, typically decorated with dragons on a blue ground, h. 26.5 cm, together with three further vases of slender elongated ovoid form (5)
£50 - £80

364

Five items of Eastern cloisonne enamel ware, max h. 15.5 cm
£30 - £40

365

An Eastern metalware model of a three master sailing vessel, h. 19 cm
£60 - £80

366

A brass container of cylindrical form engraved in the Eastern manner with figures and animals, h. 12.5 cm, together with a smaller copper pot and a mug decorated with a dragon (3)
£20 - £30

367

A Chinese paper mache bowl of circular form gilt decorated with dragons and bats on a red ground, d. 26.5 cm
£20 - £30



Lot 368

368

An early 20th century Japanese charger typically decorated in the Imari palette with exotic birds, d. 36.5 cm
£30 - £50



Lot 369

369

A Chinese two handled vase of elongated globular form decorated in pale green enamel with flowerheads and scrolls on a white ground, character mark to base, h. 27 cm
£120 - £150

370

A Cantonese dish of oval form decorated in coloured enamels with an interior scene, d. 23.5 cm, lacking cover *£20 - £30*

371

A pair of cinnabar lacquer work boxes and covers of kidney shaped form, w. 12 cm *£80 - £120*

372

A Chinese glazed terracotta figure modelled as a seated child holding a bird, h. 14.5 cm *£200 - £250*



Lot 372

373

A pair of modern Chinese two handled vases of slender ovoid form decorated in a sang de boeuf glaze on a celadon ground, printed marks to bases, h. 35.5 cm *£80 - £120*

374

A pale white jade bangle, internal d. 6.7 cm, cased *£50 - £80*

375

A dark green jade bangle, internal d. 7.1 cm, cased *£50 - £80*

376

A metalware mounted cornelian pendant of oval form carved with Islamic text, w. 4.3 cm *£40 - £60*

377

A metalware mounted cornelian pendant of oval form carved with Islamic text, w. 4 cm *£40 - £60*

378

A metalware mounted agate pendant of triangular form carved with Islamic text, l. 6 cm *£40 - £60*

379

An early 20th century Chinese Export box relief carved with a dragon, w. 27.5 cm *£50 - £80*

380

An early 20th century Kutani vase of ovoid form typically decorated with swifts amongst a traditional landscape, character mark to base, h. 17.5 cm, together with a similar vase, larger, a covered bowl and a cylindrical teapot (4) *£75 - £100*

381

A Satsuma charger decorated with a warrior and geisha within a lakeside landscape, d. 42 cm *£20 - £30*

382

A Japanese coloured woodblock print depicting a bird seated on a branch, a spiders web in its sights, signed, 34 x 18 cm, together with three further works each in the same manner and depicting an animal (4) *£60 - £100*

383

After Katsukawa Shuncho, 'Autumn Excursion During an Abundant Harvest', coloured lithographic print, 36.5 x 23 cm, together with two further works in the same manner (3) *£20 - £30*

384

A collection of thirteen Japanese scrolls, mostly reproductions, various sizes *£80 - £120*

385

Two Japanese black lacquerwork panels each set semi-precious stones in the form of vases of flowers, each 91.5 x 30.5 cm *£80 - £120*

386

A Du Jinsheng, Hangzhou woven silk panel depicting a mountainous landscape, 93 x 39.5 cm *£30 - £40*

387

After Hiroshige, an early 20th century Japanese woodblock depicting figures in a harbour, image 23 x 35 cm, together with two similar works (3) *£50 - £75*

388

A late 19th/early 20th century Japanese woodblock print depicting a geisha in traditional dress, 32 x 21.5 cm *£30 - £40*

389

A Takehiko Japanese silver and parcel gilt plaque depicting an owl resting on a branch in shallow relief, image 9.5 x 7.5 cm *£30 - £40*

390

A Japanese metalware and parcel gilt plaque depicting a pagoda in shallow relief, image 26 x 23 cm *£40 - £60*

391 - 407

Spare lots



Lot 409

409

An Italian School hand painted porcelain plaque depicting the Madonna and child in a gilt wood frame, overall d. 22 cm *£250 - £300*

410

A set of four early 20th century ceramic casks of barrel form transfer printed in the Aesthetic Movement manner for 'Irish', 'S. Whisky', 'Gin' and 'Brandy', h. 28 cm *£100 - £150*

411

A pair of early 20th century stoneware jardiniere's and stands relief and pieced in the chinoiserie manner and decorated in a plain green glaze, h. 91 cm *£50 - £80*

412

A large collection of Goss, Arcadian and other crested ware including a horseshoe, a WWI tank, an early plane and many others, approximately 100 pieces, together with a small group of commemorative ware (qty) *£60 - £80*

413

A Goss model in the form of a shell on a coral base and bearing the crest of Cornwall, h. 16.5 cm, together with a collectors plate (2) *£20 - £30*

414

A Beswick figure modelled as a puma standing on a rock, Model No. 1702, h. 20 cm, together with a set of three graduated Beswick wall plaques modelled as mallards in flight, Model Nos. 596-1/2/3 *£40 - £60*



408

Salvador Fivio for Lladro: A 'La Tarantela' figural table lamp, retired 1989, h. including shade 80 cm *£200 - £300*

415

Natalia Danko for Lomonosov, a porcelain jug modelled as a peasant girl wearing traditional dress, h. 13.5 cm, base stamped 'made in USSR'

£200 - £300



Lot 415

416

A late 19th/early 20th century pale blue glass vase of slightly flared form hand painted with a bird amongst a floral spray in the Aesthetic Movement manner, h. 30.5 cm

£40 - £60

417

A pair of late 19th/early 20th century clear glass tazzas having moulded leaf decoration and serpent entwined stems, h. 24 cm

£180 - £220

418

A pair of early 20th century opaline glass bottle vases decorated with floral sprays, h. 22.5 cm

£20 - £30

419

A 19th century silver mounted Doulton Lambeth stoneware jug, typically relief decorated with harvest scenes, h. 17 cm

£30 - £40

420

A Moorcroft miniature vase decorated with iris on a shaded green ground, with Queen Mary label to base, h. 15 cm

£40 - £60



Lot 417

421

Raoh Schorr for Royal Doulton, a model of a sleeping/laying calf decorated in a plain cream glaze, Model No. HN1161, w. 14 cm

£60 - £100

422

Spare lot



Lot 423

423

A late 19th/early 20th century cheese dome and stand with acorn finial above a cylindrical body decorated in the Neo-Classical manner, h. 29.5 cm

£40 - £60

424

An Iznik two handled stoneware vase of flat shield shaped form decorated with stylised flowers on a turquoise ground, h. 29.5 cm (af), together with a shallow dish in the same manner (2)

£40 - £60

425

A French enamel hinged box of rectangular form decorated with floral sprays, w. 10 cm, together with a smaller box (2)

£30 - £40

426

A pair of late 19th/early 20th century porcelain figures modelled as a dandy and his female companion, pseudo Meissen marks, max h. 12 cm

£30 - £40



427

A 19th century Jacob Petit porcelain perfumer modelled as a seated Eastern gentleman and his pipe on a cushion base, this turban incorporating a raised aperture, base signed 'JP', h. 18 cm *£300 - £400*

428

A pair of 18th century-style porcelain figures modelled as a dandy and his female companion on rococo bases, h. 14 cm *£30 - £40*

429

Three 19th century figures modelled as spaniels in the manner of Samson, max h. 10 cm, together with a florally encrusted teapot, sugar bowl, tea cup and saucer with pseudo Augustus Rex marks and three further items of porcelain in a similar manner (qty) *£60 - £100*

430

Two Royal Worcester dinner plates decorated in the 'Onion' pattern, d. 25.5 cm, together with a French tin glazed plate (3) *£20 - £30*

431

A group of four Mintons tiles each transfer printed in the Aesthetic Movement manner, 15.5 x 15.5 cm *£50 - £80*



Lot 432

432

Hobbs Welch for English Sewing Ltd., a novelty canister in the form of a cotton reel advertising Dewhurst, h. 14.5 cm *£40 - £60*



433

A pair of majolica stoneware figures, each modelled as a seated hound wearing a tasselled collar, h. 35.5 cm *£40 - £60*

434

A Sunderland lustre ware water jug of typical form transfer printed with the verse 'the loss of gold is great...', h. 18.5 cm, together with a similar jug, smaller (2) *£30 - £50*

435

A late 18th/early 19th century teapot of vase shaped form with bat transfer print 'peace' within Sunderland lustre coloured decoration, h. 16 cm, together with a further teapot and a tea cup and saucer dish (4) *£50 - £80*

436

A mixed group of late 18th/early 19th century Sunderland lustre table ware comprising two teapots, a slop bowl, eight saucers, four tea cups and three tea bowls *£50 - £80*

437

A mixed group of late 18th/early 19th century Sunderland lustre table ware comprising a water jug, two saucer boats, four tea cups, two coffee cans and five saucers (qty) £50 - £80

438

A set of twelve Cantagalli coffee cans and saucers, each typically decorated in shades of blue and yellow £40 - £60

439

A 19th century Bohemian ruby flash glass vase of flared canted form, h. 32.5 cm, together with five similar glasses (6) £60 - £80

440

A pair of Staffordshire figures each modelled as a zebra on a naturalist base, max h. 12.5 cm £50 - £75

441

A Welsh pottery cow creamer on a rectangular plinth base, h. 13. cm £50 - £75

442

A pair of Staffordshire bocage figures each modelled as a flower gatherer on a naturalistic base, both stamped 'Walton' verso, max h. 14 cm £50 - £75

443

A Staffordshire bocage 'Tithe Pig' figural group, h. 14 cm £60 - £75

444

A Staffordshire bocage figural group 'Flight from Egypt', h. 17 cm £50 - £75



Lot 444



Lot 446

445

A Staffordshire bocage figural group titled 'Tenderness' modelled as a couple and their lamb, stamped 'Walton' verso, h. 17.5 cm £75 - £100

446

A Staffordshire bocage figure modelled as a piper, h. 16 cm £50 - £75

447

A set of eight early 20th century clear glass champagne saucers/coupes, h. 14.5 cm *by repute these glasses were once used on the Cunard Line £75 - £100

448

A late 19th century Spode stoneware bottle vase incised and decorated in coloured enamels in the Chinoiserie manner, base impressed 'Etruria', h. 28 cm £30 - £50

449

A mixed group of Murano and Bimini coloured glass ornaments including deer, elephants and pheasants, together with seven Austrian spherical scent bottles (qty) £120 - £150

450

Bernard Leach (1887-1979), a Leach Pottery vase, the Tenmoku glazed body of cushioned square form, incised marks to rim of base, 1948/49, h. 16 cm £300 - £350

451 - 458

Spare lots



Lot 450

W&H PEACOCK

AUCTIONEERS & VALUERS

Established 1901

Auction Centre & Café

OPEN TO THE PUBLIC SIX DAYS A WEEK



The Auction Centre provides five spacious auction rooms, reception area, offices, meeting rooms, gallery display areas and a fully serviced restaurant, open six days a week. To further enhance the customer experience the Auction Centre has wifi and modern audio visual systems, over 200 parking spaces, excellent loading facilities and is set in landscaped surroundings.

Bedford Auction Centre Eastcotts Park, Wallis Way, Bedford, MK42 0PE
01234 266 366 or info@peacockauction.co.uk

peacockauction.co.uk

Silver & Plate





Lot 464

459

A 19th century Dutch metalware tray of square form with leaf design corners on four outswept feet, w. 20.5 cm, 14 ozs *£100 - £150*

460

An early 20th century silver mounted two stage conductors baton, maker FD, London 1922, cased *£80 - £120*

461

A silver wine coaster of typical form, London 1978, d. 13 cm, together with a cut glass decanter with knopped neck suspending a silver decanter label for 'Claret' (3) *£60 - £80*

462

A Victorian florally engraved scent bottle and stopper of circular form, maker GW, Chester 1895, h. 4.5 cm, cased *£50 - £80*

463

A Victorian silver tankard of bellied form with leaf capped c-scroll handle, maker RH, London 1863, h. 13 cm, 10 ozs *£100 - £150*

464

A silver three piece tea service of canted vase shaped form, Mappin & Webb, Sheffield 1934, overall 38 ozs *£350 - £400*

465

A Victorian silver lidded canister of cylindrical form with gadrooned decoration, London 1889, h. 8.5 cm, 4 ozs *£30 - £50*

466

An early 20th century Mappin & Webb silver plated five flute table centre, h. 21.5 cm *£30 - £40*



Lot 460



Lot 473



(part lot)

467

A silver three piece tea service of canted vase shaped form, maker RP, London 1945/46, overall 37 ozs *£300 - £400*

468

A modern silver sugar sifter of traditional vase shaped form, maker B&Co., Birmingham 1991, h. 18 cm, 3.5 ozs *£50 - £80*



Lot 469

469

A silver, parcel gilt and engine turned cigarette case of rectangular form, maker DS&S, London 1946, w. 9 cm, 5 ozs *£40 - £60*

470

A pair of ebonised bookends of book form each mounted with a metalware elephant, its trunk raised, h. 13.5 cm *£40 - £60*

471

An Edwardian pierced silver dish of circular form decorated in the Rococo manner, James Dixon & Sons, Sheffield 1902, d. 21 cm, 6 ozs *£60 - £100*

472

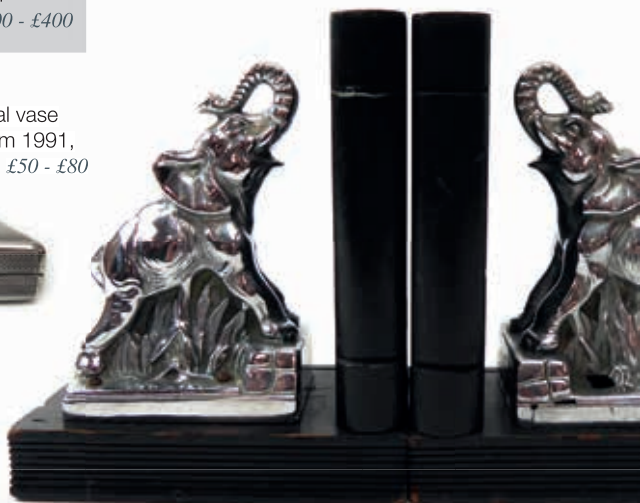
A silver engine turned compact of circular form, maker C&C, Birmingham 1946, d. 8 cm *£20 - £30*

473

A set of seven early 20th century Norwegian silver gilt and enamel decorated coffee spoons, each decorated in a different colour and having a lotus flower finial *£40 - £60*

474

A Westminster 'The D-Day Allies 2004 Gibraltar £10' silver coin, cased *£60 - £80*



Lot 470



(part lot)

475

An early 20th century silver three piece tea service of vase shaped form with beaded border on hoof feet, maker FBs Ltd., Sheffield 1920, overall 32.5 ozs £300 - £350

476

A silver three branch candelabrum of canted vase shaped form, maker R&B, Sheffield 1973, h. 29.5 cm, loaded £120 - £150

477

Three silver decanter labels for 'Rum', 'Brandy' and 'Gin', together with a pair of Georgian silver sugar nips and two silver bladed mother of pearl fruit knives, various dates and makers (6) £60 - £100

478

A cased set of twelve silver old English pattern coffee spoons, maker CB&S, Sheffield 1925 £30 - £40

479

A silver egg topper of typical form, maker E&T, Birmingham 1901, l. 10 cm, 1.5 ozs £30 - £40

480

A pair of Victorian silver peppers of gadrooned vase shaped form, h. 13 cm and a smaller silver pepper, various dates and makers, overall 6.5 ozs £40 - £60

481

An Edwardian silver dish of boat shaped form raised on an oval foot, Chester 1908, h. 7.5 cm, together with a circular silver bowl, overall 10.5 ozs (2) £80 - £120



Lot 482

482

A silver tankard commemorating Queen Elizabeth II's coronation, with monarchs head c-scroll handle, maker BM, London 1978, h. 11 cm, 9.5 ozs £80 - £120

483

A silver gravy boat of typical form with gadrooned border, c-scroll handle and hoof feet, maker JD WD, Sheffield 1920, 8.5 ozs £60 - £100



Lot 484

484

Hugo Levin for WMF, a pair of base metal candlesticks, each of Arts & Crafts design of slender form with knopped stem on a hemispherical base, h. 27 cm (2) £100 - £150



485

An Anglo-Indian three piece metalware tea service of globular form, typically relief decorated with figures and having elephant handles, overall 31 ozs *£300 - £400*

486

After Thomas Swaffield Brown (1845-1914), a silver plated plaque relief decorated with a polo match, signed within the image and dated 8/2/1907, William Hutton & Sons, 20.5 x 16.5 cm *£50 - £80*

487

A complete collection of 138 John Pinches 'The Flags of the United Nations' silver ingots, contained in a two stage wooden presentation case, with related papers *£1500 - £2000*

488

A mixed group of silver plated items including an oval galleried tray, a six sitting set of flatware, a cigarette box and other items (qty) *£60 - £100*

489

A cased set of ten silver gilt 'The Queen's Beasts' spoons commemorating the Silver Wedding Anniversary of Queen Elizabeth II and Prince Philip, William Comyns & Sons Ltd., London 1972, limited edition 350/2000, with certificate *£120 - £150*

490

Two cased six piece silver mounted dressing table sets, B&Co., Birmingham 1975 *£100 - £150*



Lot 485

491

A pair of early 20th century silver backed oval brushes, Birmingham hallmarks rubbed, l. 13 cm *£20 - £30*

492

A modern silver mounted dressing table container and matching atomiser, together with a cut glass atomiser of triangular form (3) *£30 - £40*



Lot 492



All estimates exclude buyer's premium of 21% including VAT which is payable in addition

@WHPeacock /WHPeacockAuctioneers



Lot 493

493

A silver mounted easel back photograph frame of Neo-Classical design, B&Co. Birmingham 1979, h. 21 cm £30 - £40

494

A set of eight silver napkin rings, engraved with a garland of leaves, maker HG&S, Sheffield 1978, each contained in a fitted case £50 - £80

495

An early 20th century metalware dish of oval form repousse decorated with flowerheads on four outswept feet, w. 29.5 cm, 13 ozs, possibly Egyptian £100 - £125

496

An early 20th century five piece silver mounted and engine turned dressing table set in the Neo-Classical manner, maker C&S, Chester 1922, cased £50 - £80



Lot 497

497

A small Edwardian silver salver of circular form with piecrust border on three scrolled feet, Walker & Hall, Sheffield 1908, d. 21 cm, 11.5 ozs £150 - £200

498

A mixed parcel of Georgian and later silver spoons including a near pair of old English pattern sauce ladles, fiddle and old English pattern dessert spoons, teaspoons and others, various dates and makers, overall 18 ozs, together with two silver bladed knives (qty) £200 - £250



Lot 499

499

A silver mounted green glass dish in the form of a swan, import marks, h 11.5 cm £120 - £150

500

A silver engine turned cigarette box of rectangular form, Mappin & Webb, London 1946, w. 15 cm £40 - £60



Lot 501

501

A silver engine turned cigarette box of rectangular form, maker C&RC, London 1926, w. 14 cm £40 - £60

502

A silver cigarette box of cushioned rectangular form, maker RB, London 1913, with green Moroccan leather base gilt tooled with the Harrods logo, w. 17.5 cm £50 - £80

503

A late 19th/early 20th century Anglo-Indian metalware rose water sprinkler of elongated vase shaped form with rose finial above a body relief decorated in the foliate manner, h. 25.5 cm

£150 - £200

504

A WMF cast metal candlestick of elongated form in the Art Nouveau manner, h. 27.5 cm

£60 - £100



Lot 504

505

A cased set of six silver bean end coffee spoons in the Art Deco manner, a cased set of six silver old English pattern teaspoons and matching nips and a silver spill vase, various dates and makers

£40 - £60

506

Five silver dressing table bottle lids, various dates and makers, max d. 8 cm, overall 2 ozs

£20 - £30

507

A four piece silver mounted manicure set including toothbrush and tweezers, together with a silver handled toasting fork, various dates and makers

£30 - £40

508

A pair of miniature silver two handled dishes with pierced borders, London 1925, w. 12.5 cm, a similar dish and a Georgian silver salt scuttle spoon (4)

£40 - £60



Lot 503

509

A set of six Victorian silver old English pattern teaspoons, London 1843, cased

£40 - £60

510

A set of five Victorian silver fiddle pattern teaspoons, Gibson & Co, London 1894, together with a silver old English pattern teaspoon, cased

£30 - £40

511

Two silver mounted photograph frames, a silver handled button hook and a silver backed hairbrush, various dates and makers (4)

£60 - £100

512

An Edwardian silver mounted ivory page turner with magnifying glass end, maker C&N, Birmingham 1905, l. 31.5 cm

£60 - £100

513

An early 20th century silver sauce boat of typical form with leaf capped c-scroll handle and hoof feet, maker RC, London 1927, 3.5 ozs

£40 - £60

514

A pair of Victorian silver and parcel gilt salts of circular form, each decorated in the Neo-classical manner on three paw feet, Walter & John Barnard, London 1877, d. 7 cm, together with a pair of matching spoons (4)

£50 - £80

515

A silver cigarette case, vesta case and two thimbles including an example by Charles Horner, various dates and makers (4)

£60 - £80

516

A pair of silver sugar tongs with shell ends, two silver napkin rings and a silver fiddle pattern mustard spoon, various dates and makers, overall 2.5 ozs (4)

£40 - £60

517

A Victorian silver sifting spoon with apostle finial, William Hutton & Sons, London 1895, l. 14 cm, together with a silver napkin ring (2)

£25 - £35



Lot 512

518

A Victorian silver and parcel gilt vinaigrette of cushioned rectangular form with pierced grille, maker FM, Birmingham 1862, w. 2.4 cm

£80 - £120



Lot 518

519

A set of four Edwardian silver salts of squat bun shaped form with gadrooned borders and hoof feet, maker JS, Dublin 1902, d. 6.5 cm, together with four matching spoons (8)

£100 - £150

520

A silver mounted hobnail cut dressing table bottle of spherical form, Chester hallmarks, h. 14 cm

£30 - £40

521

A William IV Irish silver serving spoon with bright cut engraving, makers mark indistinct, Dublin 1832, l. 30.5 cm, together with two further Irish silver table spoons and six teaspoons, all with Dublin hallmarks, overall 11 ozs (9)

£150 - £200

522

A set of four Chinese metalware spoons with pierced character mark ends and shell bowls, together with six similar pickle forks, 2 ozs (10)

£30 - £40

523

A group of five silver teaspoons, various designs, dates and makers, 2.5 ozs

£20 - £30

524

A silver shell end serviette clip, a Russian silver spoon and four further silver and metalware spoons, various dates and makers, overall 2 ozs

£30 - £40

525

Two Victorian and later silver vesta cases of cushioned rectangular form, various dates and makers

£20 - £30

526

A pair of early 20th century stamped metalware dishes of flowerhead form, stamped '800', d. 11 cm, 4 ozs

£40 - £60

**527**

A small metalware dish, the swing handle above a body decorated in the Rococo manner, d. 10 cm, 3 ozs, stamped '925'

£30 - £40

528

A metalware parcel gilt dish of oval form repousse decorated with sunflowers within a gadrooned border, stamped 'silver', w. 17 cm, 4 ozs

£40 - £60

529

A Polish metalware dish of flowerhead form raised on a socle foot, d. 20 cm, 8 ozs

£80 - £120

530

A Polish metalware and parcel gilt table spoon and a pair of matching two prong forks, cased

£40 - £60

531 - 536

Spare lots



Lot 529

*Jewellery, Coins
& Watches*





Lot 538

537

The Westminster Collection Royal Family Set: The Queen Mother's 100th Birthday gold coin cover comprising 22ct £5 proof coin and hand painted stamp cover, limited edition 40/100, in presentation folder *£700 - £900*

538

The Westminster Collection Royal Family Set: Queen Victoria & The Victorian Age gold coin cover comprising 22ct £5 proof coin and hand painted stamp cover, limited edition 41/100, in presentation folder *£700 - £900*

539

The Westminster Collection Royal Family Set: The Queen Elizabeth II's 75th Birthday gold coin cover comprising 22ct £5 proof coin and hand painted stamp cover, limited edition 38/75, in presentation folder *£700 - £900*

540

The Westminster Collection Royal Family Set: The Queen's Golden Jubilee gold coin cover comprising £5 proof coin and hand painted stamp cover, limited edition 91/100, in presentation folder *£700 - £900*

541

The Westminster Collection Royal Family Set: The Queen Mother Guernsey gold coin cover comprising 24ct £50 proof coin and hand painted stamp cover, limited edition 70/100, in presentation folder *£200 - £300*

542

The Westminster Commemorative Coin Cover: The Edward & Sophie Royal Wedding gold coin cover comprising sovereign and stamp cover, numbered 0391 *£180 - £220*

543

The Westminster Commemorative Coin Cover: The Queen's Golden Jubilee gold coin first day cover comprising sovereign and stamp cover, limited edition 231/999 *£180 - £220*

544

The Westminster Commemorative Coin Cover: Princess of Wales 21st Birthday gold coin cover comprising sovereign and stamp cover, numbered 0245 *£180 - £220*

545

A 9ct yellow gold mounted double sided memory pendant of circular form, d. 3.5 cm, a pair of 9ct yellow gold pearl screw-type earrings and a stick pin with 'S' finial (4) *£60 - £80*

546

A George Tarratt silver brooch of stylised foliate form, hallmarked for Birmingham 1961, w. 2.9 cm, together with a pair of matching screw-type earrings, with original card box £50 - £80



547

A 9ct yellow gold fringe necklet suspending nine graduated garnets, each beneath a small pearl, l. 41 cm, together with a pair of screw-type earrings and a similar ring, overall 19.1 gms (4) £250 - £300

548

An 18ct yellow gold ring set three graduated diamonds, ring size P, 2 gms £120 - £150

549

A 9ct two colour band ring inset three small diamonds, ring size L, 3.2 gms £80 - £120

Lot 546

550

An 18ct yellow gold ring set three graduated diamonds in a raised inline setting, central stone approximately 0.25 carats, ring size M 1/2, 3.1 gms £450 - £550



Lot 550

554

A 9ct yellow gold cameo brooch of oval form depicting a classical female head and shoulders, l. 3.4 cm, together with an Edwardian 9ct yellow gold bar brooch (2) £50 - £80



Lot 551

551

A yellow metal ring set three small diamonds within a twisted branch design setting, ring size H, 4.9 gms £250 - £350

555

A yellow metal ring set five graduated opals and a 9ct yellow gold ring eternity ring set paste, various sizes, overall 4.3 gms (2) £60 - £80

552

An 18ct yellow gold ring set oval cabochon opal within a diamond set fleur de lis mount, opal measures approximately 1.8 x 1.1 cm, ring size H 1/2, 6.8 gms £300 - £400



Lot 552

556

A late 19th century 18ct yellow gold ring set three graduated rubies interspersed with four rose cut diamonds in a marquise shaped setting, hallmarked for Chester 1899, ring size N, 3.1 gms £80 - £120



Lot 556

553

A 9ct yellow gold ring set square cut topaz and small diamonds, ring size L, 2.9 gms £50 - £80



Lot 557

557

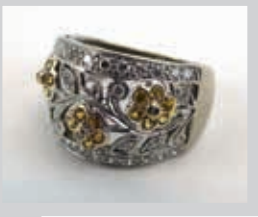
An 18ct yellow gold ring of ropetwist knot design, ring size M, 3.7 gms £60 - £80

558

An 18ct yellow gold ring set three small diamonds in heart shaped settings, an 18ct yellow gold wedding band, an 18ct yellow gold cluster ring set sapphires and diamonds and two further dress rings (5) *£80 - £120*

559

An 18ct white gold ring set small diamonds and citrine within an openwork foliate setting, ring size Q, 9.3 gms



£450 - £500

560

A silver dress ring set cushion cut amethyst within a border of lab white sapphires, ring size O *£40 - £60*

561

A 10ct yellow gold tennis-type bracelet set twenty-six oval tanzanite, 9 gms *£700 - £900*

562

A late 19th/early 20th century silver and gold overlaid brooch of oval form relief decorated with stylised flowerheads, w. 4.5 cm *£40 - £60*

563

A pair of 9ct two colour gold hoop earrings, 2.8 gms *£30 - £40*

564

An 18ct yellow gold florally engraved wedding band, ring size N, 3.5 gms *£60 - £80*

565

A 14ct yellow gold ring set oval jade within a foliate setting, ring size N, 3.2 gms *£100 - £150*



Lot 566

566

An 18ct yellow gold bricklink necklet relief decorated with elephants, three of them set paste, together with a matching bracelet, overall 70.7 gms *£1600 - £1800*

567

A rolled gold chainlink necklace suspending an open work pendant, a small 9ct yellow gold brooch of knot design, two silver bar brooches and a filigree work cross pendant necklace (5) *£40 - £60*

568

A single strand cultured pearl necklet, l. 39 cm, together with a pair of 9ct yellow gold pearl set screw-type earrings (3) *£40 - £60*

569

An 18ct yellow gold half eternity ring set seed pearls, ring size N 1/2, together with a 15ct yellow gold ring set three small pearls and two small rubies, 1.6 gms (2) *£30 - £50*

570

An early 20th century yellow metal ring set four rubies and five diamonds in openwork rubover settings, ring size S, 2.9 gms *£150 - £200*



Lot 570

571

A 9ct yellow gold flat curb link necklace suspending a yellow metal 'Mum' pendant of heart shaped form set paste, together with a 10ct yellow gold dress ring, a 9ct yellow gold ring and a yellow metal cross pendant, overall 9.5 gms *£90 - £110*



Lot 561



Lot 577



Lot 576



Lot 572

572

A 9ct yellow gold florally engraved curb link bracelet with heart shaped padlock clasp, 20.4 gms *£150 - £200*

573

A 9ct yellow gold bar brooch set oval opal, w. 6.2 cm, a butterfly wing pendant necklace, a similar brooch and a circular brooch painted with a bluebell wood (4) *£50 - £80*

574

An early 20th century yellow metal ring set oval opal, ring size P, 2.4 gms *£50 - £70*

575

A sovereign dated 1928, Pretoria Mint *£180 - £220*

576

A yellow metal four bar gatelink bracelet with heart shaped padlock clasp, stamped '9c', 15.1 gms *£150 - £200*

577

A 9ct yellow gold elongated fancy link muff chain, l. 148 cm, 34.8 gms *£400 - £500*

578

A group of four 9ct yellow gold dress rings set coloured stones and small diamonds, various sizes, overall 11.9 gms *£140 - £180*

579

A group of four 9ct yellow gold dress rings set sapphires and small diamonds, various sizes, overall 10.1 gms *£120 - £150*

580

A group of four 9ct yellow gold and yellow metal dress rings set small diamonds and rubies, various sizes, overall 14.9 gms *£150 - £200*

581

A group of six 9ct yellow gold and yellow metal dress rings set opals, coloured stones and paste, various sizes, overall 13.1 gms *£150 - £200*

582

A gentleman's 9ct yellow gold signet ring with swivel section having Masonic enamelled decoration to one side and engraved initials to the other, ring size Y, 7.9 gms *£100 - £150*

583

A group of three 14ct yellow gold and yellow metal dress rings set paste, various sizes, overall 8.4 gms *£150 - £200*

584

An 18ct yellow gold half eternity ring set small diamonds, an 18ct yellow gold ring set tanzanite and small diamonds, together with two further 18ct yellow gold rings set paste, various sizes, overall 13.3 gms (4) *£300 - £350*

585

Three 18ct yellow gold rings set small diamonds and rubies, various sizes, overall 12.2 gms *£280 - £320*

586

An Edwardian 9ct yellow gold pendant set small diamond and two red coloured stones in a typical setting, hallmarked for Chester 1902, 2.3 gms *£40 - £50*



587

An 18ct yellow gold cluster ring set oval cut Burmese ruby in a surround of twelve brilliant cut diamonds, ruby approximately 2.19 carats, ring size N, 5.8 gms *£2000 - £2500*

590

An 18ct yellow gold ring set cushion cut internally flawless fancy yellow diamond in a raised four claw setting, the shoulders each set nine small white diamonds, central stone approximately 0.61 carats, ring size L, 2.6 gms *£1200 - £1500*



Lot 590



Lot 591

591

A 14ct white gold ring set emerald cut Zambian emerald within a border of small diamonds, the shoulders each set two rows of small diamonds, stone measure approximately 9 x 7 mm, ring size N, 5 gms *£800 - £1200*



Lot 592

592

A 14ct white gold cluster ring set oval cut Zambian emerald within a border of small diamonds, stone measure approximately 7 x 6 mm, ring size N 1/2, 4.3 gms *£800 - £1200*

588

An 18ct white gold ring set pear shaped fancy pink/purple diamond in a three claw setting, the shoulders each set a tapered baguette cut white diamond, central stone approximately 0.7 carats, ring size M, 2.5 gms *£1500 - £2000*



Lot 588

589

An 18ct yellow gold ring set cushion cut yellow diamond in a raised four claw setting, stone approximately 0.75 carats, ring size M, 2.7 gms *£600 - £800*



Lot 589



593

A Van Cleef & Arpels 18ct yellow gold 'Philippine' ring pave set eighteen brilliant cut diamonds within a tapered band, ring size J, 8 gms *£1000 - £1500*



594

An 18ct yellow gold ring set emerald cut emerald within a raised four claw setting, the shoulders each set a princess cut diamond, stone measures approximately 10 x 6 mm, ring size O, 4.3 gms *£3000 - £4000*



Lot 598

598

A yellow metal full eternity ring set four rows of small brilliant cut diamonds, the sides also set a row of small diamonds, ring size K 1/2, 11.6 gms *£1500 - £2000*

595

A pair of 9ct yellow gold hoop-type earrings, a 9ct yellow gold bar brooch and five 9ct yellow gold and yellow metal dress rings, overall 16.9 gms *£200 - £250*



Lot 599

599

An 18ct yellow gold hinged bracelet set three rows of small brilliant cut diamonds within a diagonal twist setting, internal w. 5.6 cm, 44.2 gms *£1200 - £1500*



Lot 596

596

A gentleman's 18ct white gold ring set centrally with sixteen princess cut diamonds within a border of baguette cut diamonds, total diamond weight approximately 1 carat, ring size Q 1/2, 16.5 gms *£800 - £1200*

597

A white metal full eternity ring set three rows of small brilliant cut diamonds, the sides also set a row of small diamonds, ring size Q, 11.4 gms *£1500 - £2000*



Lot 597

600

A Kria 18ct two colour gold articulated link necklace set nine brilliant cut diamonds in rubover settings, total diamond weight approximately 2 carats, l. 43 cm. 64.6 gms *£2000 - £2500*



Lot 600



Lot 601

601

A 1970's Sante Privitera yellow metal four section bracelet relief decorated in the Renaissance manner with Bacchus amongst fruiting vines, incised signatures to each section, overall 101.4 gms, largest section measures 2.5 x 6.5 cm *£3000 - £4000*



604

A suite of 1970's Sante Privitera 18ct yellow gold jewellery of Etruscan design comprising a necklace formed of five circular sections each set a small ruby on an elongated link chain, together with a pair of matching ear clips and a ring, impressed signatures, overall 57.4 gms, necklace l. 39 cm *£1500 - £2000*



602

A 1970's Sante Privitera yellow metal six section bracelet relief decorated in the Egyptian manner, incised signature to one section, overall 21.5 gms, each section measures 0.7 x 2.7 cm *£600 - £800*



Lot 605

603

A 1970's Sante Privitera 18ct yellow gold cuff bracelet relief decorated in the Renaissance manner with a battle scene, incised signature, overall 139.8 gms, max w. 7.4 cm *£3500 - £4500*

605

Two 18ct white gold rings, each set a brilliant cut diamond in a four claw setting and having diamond set shoulders, sizes N 1/2 and P, overall 4.2 gms, together with a 9ct white gold ring set diamond, 1.1 gms (3) *£100 - £150*

606

An 18ct white gold ring set brilliant cut diamond in a four claw setting, stone approximately 0.25 carats, ring size P, 2 gms *£80 - £120*



Lot 606



607

An 18ct yellow gold ring set oval purple coloured glass in a rubover setting, ring size Q 1/2, 3.6 gms, together with a 9ct yellow gold ring of bark design set paste, 3.2 gms (2) *£80 - £120*

608

A 9ct yellow gold fine chainlink necklace suspending a curved pendant of tortoiseshell design, l. 40 cm, overall 2.1 gms *£30 - £40*

609

A 9ct yellow gold bead necklace suspending marquise and brilliant cut sapphires in rubover settings, l. 40 cm, overall 4.4 gms *£60 - £100*

610

An early 20th century 9ct yellow gold elongated link necklace suspending an oval featherwork locket depicting an exotic bird on a branch, chain length 49 cm, locket l. 2.6 cm, overall 12.8 gms *£120 - £150*

611

An Edwardian 9ct yellow gold thimble of typical form set small pearls and engraved with a foliate band, George Unite, Birmingham 1908, h. 2.5 cm, 5.2 gms *£60 - £100*

612

An Edwardian 9ct yellow gold fringe necklace suspending thirteen graduated oval drops set purple coloured glass, l. 40 cm, largest drop measures l. 2 cm, together with a similar 9ct yellow gold oval brooch, w. 2.7 cm (2) *£120 - £150*

613

An early 20th century Portuguese silver bracelet repousse decorated with famous Portuguese landmarks, internal d. 5.9 cm, 1 oz *£30 - £40*

614

A mixed parcel of silver and metalware jewellery including enamelled brooches, stick pins, cufflink's and other items (qty) *£50 - £80*

615

Five small 9ct yellow gold pendants, a yellow gold eternity ring set paste, a yellow metal band ring and a cased stick pin of Etruscan design (8) *£60 - £100*

616

A 9ct yellow gold brooch of bow design set small diamonds and rubies, w. 2.5 cm, 3.3 gms *£40 - £60*



Lot 617

617

An 18ct tri-colour gold three band puzzle ring, Sheffield 1990, ring size M, overall 10.2 gms *£220 - £250*

618

A 9ct yellow gold double sided locket of circular form, together with a gold plated florally decorated oval locket (2) *£60 - £80*

619

A 9ct yellow gold fringe type necklace of Etruscan design, 19.3 gms *£180 - £220*

620

A 9ct yellow gold cluster ring set diamond and sapphires within a bark design shank, ring size K, 3.6 gms *£50 - £80*



Lot 621

621

An 18ct yellow gold ring set brilliant cut diamond in a six claw setting, stone approximately 0.5 carats, ring size L, 2.5 gms *£450 - £500*

Lot 619





Lot 622

622

A 9ct white gold bracelet set seventeen oval cut amethyst, l. 17.5 cm, together with a similar silver dress ring (2) *£200 - £300*

623

A 9ct yellow gold dress ring set alexandrite-type stone, two further 9ct and 10ct yellow gold dress rings and a 10ct yellow gold pendant of heart shaped form, overall 9.5 gms (4) *£100 - £150*

624

A 9ct yellow gold ring set oval ruby in a four claw setting, the shoulders set small diamonds, ruby approximately 2.6 carats, ring size N, 3.8 gms *£60 - £100*

625

A 9ct yellow gold ring set three brilliant cut diamonds in a modern 'nest' setting, stones approximately 0.25 carats each, ring size J, 5.8 gms *£300 - £400*



Lot 625

626

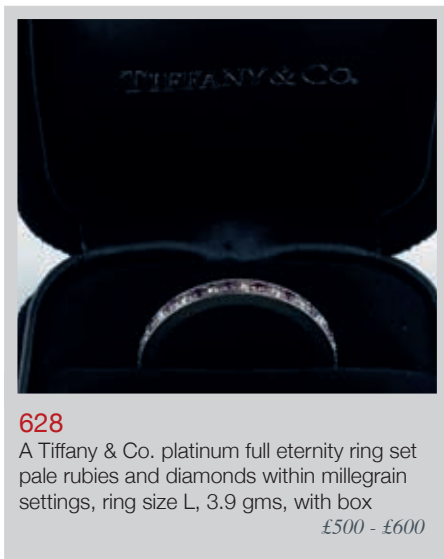
An 18ct yellow gold ring set oval ruby within a raised rubover setting within a beaded shank, ring size K 1/2, 4.2 gms *£100 - £150*



Lot 627

627

A 14ct yellow gold ring set opal slither in a rubover setting within a carved scrollwork shank, ring size R 1/2, 7 gms *£80 - £120*



628

A Tiffany & Co. platinum full eternity ring set pale rubies and diamonds within millegrain settings, ring size L, 3.9 gms, with box *£500 - £600*

629

An 18ct white gold half eternity ring set ten brilliant cut diamonds in rubover settings, ring size N, 1.7 gms *£200 - £300*



Lot 629

630

A platinum ring set princess cut diamond in a four claw setting, stone approximately 0.4 carats, ring size L 1/2, together with a matching wedding band, overall 7 gms (2) *£500 - £600*



Lot 631

631

A 10 ruble coin, dated 1899 *£220 - £250*

632

A 9ct yellow gold pendant set Edwardian sovereign dated 1903 in a loose mount, overall 12.1 gms *£260 - £300*

633

A yellow metal ropetwist necklace suspending a 9ct yellow gold ingot pendant, dated 1977, overall 51.4 gms *£500 - £700*



Lot 633



Lot 638

638

A pair of yellow metal cufflink's of rectangular form decorated with the initials 'LC', stamped '18k', 25.7 gms together with a yellow metal tie pin (3) £450 - £500



634

A 14ct white gold ring set brilliant cut diamond in a raised four claw setting, the openwork shoulders set eight small diamonds in a modern setting, stone approximately 1.25 carats, ring size M, 6.6 gms £1500 - £2000

639

An early 20th century 9ct yellow gold ring set five graduated oval cut purple glass sections, ring size K, 1.3 gms £40 - £60

640

A mixed parcel of jewellery comprising an 18ct yellow gold ring set princess cut diamond in a rubover setting, 1.7 gms (af), a 9ct yellow gold medallion and three 9ct yellow gold rings, overall 11.1 gms, together with a pair of ear pendants and a brooch (8) £150 - £200

641

A 9ct yellow gold bark design ring set semi-precious stones, ring size O 1/2, 10.7 gms £150 - £200

635

A gentleman's yellow metal band ring set old cut diamond in a recessed rubover setting, stone approximately 0.25 carats, ring size T 1/2, 6.5 gms £150 - £200

636

A 9ct yellow gold pendant suspending a Victorian sovereign dated 1899 in a loose mount, overall 9.1 gms £200 - £300

637

A yellow metal pendant suspending a 5 mark coin dated 1877 in a loose mount, overall 3 gms £40 - £60



Lot 636



Lot 642

642

A suite of 18ct white gold jewellery comprising a pendant necklace, a pair of ear pendants and a five stone ring, each set rubies and diamonds, overall 10 gms (4) £300 - £400

Lot 645

643

A pair of 9ct white gold ear pendants of teardrop design set clear and blue paste, overall 4.2 gms
£60 - £100

644

An Edwardian sovereign dated 1913 £180 - £220

645

A 9ct yellow gold double Albert watch chain with two lobster claps, a t-bar and suspending a 9ct yellow gold medallion dated 1910, overall 35.6 gms
£400 - £500



Lot 646

646

An Edwardian silver florally engraved sovereign case of square form, Birmingham 1903, l. including suspension loop 4.5 cm
£40 - £60

647

An early 20th century florally engraved metalware locket of oval form, l. including suspension loop 6.5 cm
£40 - £60

648

An early 20th century silver double Albert watch chain suspending a silver medallion, overall 1.6 ozs
£40 - £60



Lot 649

649

An 18ct white gold band ring set brilliant cut diamond in a rubover diamond shaped setting, ring size Q, 8 gms
£200 - £300

650

Three 9ct yellow gold and yellow metal dress rings set cameo, turquoise and onyx, various sizes, overall 10.8 gms (3)
£120 - £150

651

A parcel of silver and metalware amber jewellery comprising a cuff bracelet, four rings, a pendant necklace and a pendant (7)
£80 - £120

652

An 18ct yellow gold half eternity ring set five brilliant cut diamonds each in a six claw setting, total diamond weight approximately 1.45 carats, ring size P 1/5, 4.7 gms
£800 - £1200



Lot 652

653

A sovereign dated 1976v
£200 - £250

654

A 19th century yellow metal mourning ring set turquoise and small pearls in a flowerhead setting, the band engraved and set woven hair, ring size L 1/2, 2 gms
£60 - £80

655

An 18ct white gold ring set oval dark green stone in a raised four claw setting, the openwork shoulders each set three small diamonds (one missing), ring size L 1/2, 3.1 gms
£80 - £120



Lot 656

656

A 9ct yellow gold bracelet, the links of flowerhead design, 25.3 gms *£300 - £400*

657

A single strand graduated cultured pearl necklace with 9ct yellow gold clasp set small ruby l. 42 cm, largest pearl measures d. 7 mm *£60 - £100*

658

Four 9ct white gold dress rings set small diamonds and blue coloured stones, various sizes, overall 7.8 gms (4) *£60 - £100*

659

A 9ct white gold fine flat curb link necklace suspending an openwork pendant of heart shaped form set small diamonds, together with a 9ct white gold necklace set paste, overall 4.5 gms *£60 - £100*

660

A 9ct white gold cluster ring set small diamonds and sapphires, together with a white gold eternity ring set paste, overall 5.4 gms *£50 - £80*

661

An 18ct yellow gold ring set small diamonds in an illusion setting, 1.9 gms, together with a 9ct yellow gold ring set paste, 1.9 gms (2) *£40 - £60*

662

Three 9ct yellow gold wedding bands, various sizes, overall 12.8 gms *£100 - £150*

663

A 9ct yellow gold medallion relief decorated with the Madonna and child, together with a further 9ct yellow gold medallion, overall 8.6 gms (2) *£70 - £90*

664

Five 9ct yellow gold and yellow metal signet rings, various sizes, overall 12.1 gms (af) *£100 - £150*

665

A mixed parcel of jewellery comprising a yellow metal mounted swivel fob set smoky quartz, a 9ct yellow gold mounted hardstone swivel fob, a 15ct yellow gold bar brooch, a yellow metal bar brooch, a part gold locket and a pair of yellow metal hoop earrings (af) *£70 - £90*

666

A Charles Horner silver brooch in the form of a dragonfly decorated in blue enamel, w. 4 cm, together with a Charles Horner silver hat pin finial of thistle design (af) *£20 - £30*

667

An early 20th century metalware figaro link necklace suspending a green enamel decorated pendant in the form of an entwined serpent, pendant drop l. 4.8 cm, together with a bow design pendant necklace set paste and an enamel decorated oval locket (3) (af) *£40 - £60*

668

A David Andersen silver and blue enamelled brooch in the form of a butterfly, w. 5.5 cm, a silver bar brooch with oval blue enamel decoration, a butterfly wing silver brooch and similar pendant (4) *£40 - £60*

669

A late 19th/early 20th century yellow metal brooch set opal in the form of a butterfly, w. 4.8 cm (af), together with a rock crystal-type brooch in the form of a beetle (2) *£40 - £60*



Lot 670

670

A silver and pale blue gillouche enamelled compact of circular form, relief decorated with the letter 'D', John William Barrett, Birmingham 1958, d. 7.5 cm *£30 - £40*

671

A small silver gilt and pale blue gillouche enamelled compact of circular form, d. 4.5 cm (af) *£20 - £30*

672

A mixed parcel of late 19th century and later silver and metalware jewellery including an oval locket, a buckle ring, a medallion, a wristwatch and other items, together with a miniature silver dolls house chair (qty) *£60 - £80*



Lot 673

673

A white metal ring set five graduated diamonds within a millegrain border of smaller diamonds in a marquise shaped setting, ring size R 1/2, 3.7 gms *£120 - £150*

674

A 9ct yellow gold fancy boxlink necklace with lobster clasp, 22.9 gms *£200 - £250*

675

A silver curb link chain suspending a quantity of charms including an enamelled fish, button hooks, a billiken doll and many others, together with four silver medallions, a St Christopher pendant, a locket, a brooch set coin, a Longines wristwatch movement, a 9ct yellow gold stick pin, a 9ct yellow gold bar brooch and two further bar brooches (qty) *£50 - £80*

676

A small parcel of metalware jewellery including a pair of ear clips of Etruscan design, a bracelet formed from 'Roma' miniature medallions, a further bracelet, a cuff bracelet and a single Siamese cufflink (6) *£20 - £30*

677

A 9ct yellow gold flat curb link necklace suspending a teardrop shaped pendant set pearl, a pair of pearl ear studs and a 9ct yellow gold ring set three pearls (af), overall 7 gms (4) *£80 - £120*



Lot 680

678

A parcel of opal set jewellery comprising two necklaces and a ring (3) *£40 - £60*

679

A silver gilt snakelink necklace suspending a baroque pearl pendant, together with a gold plated necklace suspending a 9ct yellow gold St Christopher pendant *£40 - £60*

680

A graduated amber bead necklace, 80.6 gms *£200 - £300*

681

Four pairs of 9ct yellow gold and yellow metal ear studs, together with two single earrings *£30 - £40*

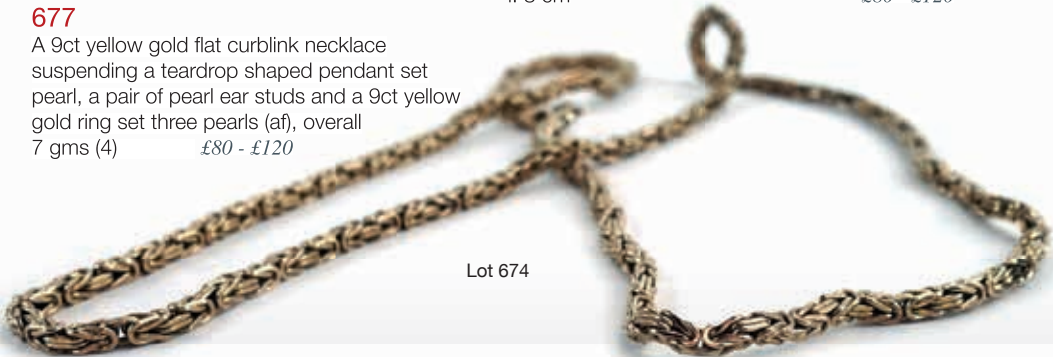
682

A silver boxlink necklace suspending a red sponge coral pendant of cylindrical form, together with a similar pendant (2) *£40 - £60*

683

A metalware torque necklace suspending a silver pendant of triangular flowerhead form, Norman Grant, Edinburgh 1975, pendant drop l. 8 cm *£80 - £120*

Lot 674





684

A silver torque necklace suspending a pendant of openwork design, a metalware three strand torque necklace and a gold plated torque necklace suspending a naturalistic pendant drop (3) £80 - £120

685

A 22ct yellow gold wedding band, ring size N 1/2, 2.9 gms, together with a parcel of 9ct yellow gold jewellery comprising a ropetwist necklace, a wedding band and two signet rings, 15.2 gms, together with a yellow metal locket of circular form (qty) £150 - £200

686

A Charles Horner brooch of openwork Art Nouveau design decorated in enamel in shades of blue, green and purple, w. 3.5 cm, together with a silver brooch of oval form (2) £40 - £60

687

A French 18ct yellow gold curb link bracelet having engraved links, 18.6 gms £380 - £420

688

A yellow metal ring set old cut diamond and pearl in a crossover setting, ring size N, together with two further yellow gold rings set diamonds, various sizes, overall 8.2 gms (3) £100 - £150

689

A yellow metal stick pin, the end repousse decorated with a female beauty and set diamond chip, l. 6.7 cm, together with a similar pin, overall 2.8 gms (2) £60 - £100

690

A pair of gilt metal cufflink's of rectangular form £40 - £60

691

A pair of early 20th century French yellow metal ear pendants each set a single pearl and diamond chip, overall 2.6 gms, cased £40 - £60

692

A single strand continuous cultured pearl necklace with 18ct white gold clasp set rubies and diamonds in an openwork setting, pearls measure approximately d. 7 mm, l. 51 cm £300 - £400



Lot 687

693

An early 20th century 18ct yellow gold ring of entwined form set centrally with a small diamond, maker WW Ltd., London 1918, ring size Q, 5.3 gms £150 - £200



Lot 693

694

A silver dress ring set paste, ring size O £30 - £40

695

A Georgian yellow metal mourning brooch of cushioned rectangular form inset hair within a jet-type border, w. 2.3 cm £60 - £80



696

A yellow metal mounted cameo brooch of oval form centrally depicting the three graces, l. 7.8 cm
£50 - £80

697

A 9ct yellow gold half eternity ring set sapphires and cubic zirconia, ring size L, 1.3 gms
£60 - £100

698

A 15ct yellow gold mourning ring depicting a forget-me-not within a border of seed pearls, the shoulders decorated in black enamel and having plaited hair section verso, Birmingham 1900, ring size M, 2.8 gms
£50 - £80



Lot 699

699

An 18ct yellow gold band ring set three rows of seventeen baguette cut diamonds in a brick setting, ring size L, 10.8 gms
£1800 - £2000

700

An 18ct white gold flat curb link necklace suspending a pendant set paste, overall 18.6 gms
£200 - £300

701

An 18ct white gold flat curb link necklace, 10.9 gms
£120 - £150

702

An 18ct yellow gold gem set ring of flowerhead design, ring size N, 6.4 gms
£200 - £250



Lot 702

703

A yellow metal ring of openwork design set one brilliant and two princess cut diamonds in rubover settings, ring size N, 5.8 gms
£600 - £800



Lot 703

704

A 9ct yellow gold four bar gatelink bracelet set two seed pearls and three purple coloured stones and having a heart shaped padlock clasp, 11.1 gms
£120 - £150

705

A parcel of silver and metalware jewellery comprising a brooch in the form of a terrier, a filigree work bracelet of Egyptian design and a Siamese niellowork bracelet, together with a silver page marker with elephant end (4)
£40 - £60

706

Two American Indian-type beaded necklaces and a lapis lazuli bead necklace (3)
£20 - £30

707

An 18ct yellow gold cluster ring set oval opal in a surround of fourteen rubies, ring size N, 6.5 gms
£180 - £220

**708**

A 14ct yellow gold ring set heart shaped amethyst and two small diamonds, ring size L, 1.4 gms
£80 - £120

709

An 18ct white gold ring set brilliant cut diamond in a rubover setting, stone approximately 1.1 carats. ring size S 1/2, 10.5 gms

£1800 - £2200



Lot 709



Lot 716



Lot 710

710

A 9ct white gold cluster ring set oval topaz within a border of small diamonds, ring size R, 4.8 gms

£200 - £250

716

A 9ct yellow gold ring set three graduated diamonds in an inline setting, ring size J, 1.8 gms

£150 - £200

711

A 9ct white gold dress ring set clear stones in a flowerhead setting, ring size N, 5.4 gms

£60 - £100

717

A pair of 9ct yellow gold ear studs set cabochon malachite, d. 0.9 cm

£30 - £40

712

An 18ct yellow gold ring set oval amethyst and ten small diamonds in a crossover setting, ring size N, 4.9 gms

£250 - £300



Lot 712

718

An 18ct yellow gold ring set oval cabochon rose quartz, ring size P, 5.9 gms

£150 - £200



Lot 718

713

An 18ct yellow gold ring set cabochon malachite and two small diamonds in a diagonal setting, ring size N, 6.6 gms

£120 - £150

719

A late 19th century 18ct yellow gold ring set three graduated sapphires interspersed with four small diamonds in an openwork marquise shaped setting, ring size L, 2.1 gms

£150 - £200

714

A pair of 9ct yellow gold ear studs of circular form, each set a green cameo glass roundel carved with a classical head, d. 1.2 cm

£50 - £80



Lot 720

720

A 9ct yellow gold ring set small diamonds and yellow sapphires in a channel-type twist setting, ring size O 1/2, 2 gms

£120 - £150



Lot 715

721

A 9ct white gold tennis-type bracelet set small pale emeralds, overall 9.6 gms

£120 - £150

722

A platinum ring set seven marquise cut diamonds in a v-shaped setting, total diamond weight approximately 0.46 carat, ring size M, 3.9 gms

£250 - £300



Lot 722

715

An 18ct white gold ring set brilliant cut diamond in a rubover setting, stone approximately 0.5 carat, ring size K, 6.9 gms

£450 - £550

723

An 18ct yellow gold cluster ring set oval tourmaline within a diamond set border, ring size N, 3.2 gms *£150 - £200*



Lot 723

732

A 9ct yellow gold cluster ring set small diamonds, the shoulders each set three further diamonds, ring size L, 3.3 gms *£120 - £150*

724

A 9ct white and yellow gold ring set cultured pearl and small rubies in a bouquet design setting, ring size M 1/2, 5.5 gms *£80 - £120*

725

An 18ct yellow gold ring set twenty-one small diamonds in tapered setting, ring size M, 4.2 gms *£150 - £200*

726

An 18ct white gold ring pave set small diamonds in a half spherical setting, ring size T, 3.7 gms *£100 - £150*

727

A 10ct yellow gold ring set small diamonds in a tension channel-type setting, ring size S, 3.1 gms *£100 - £150*

728

A 9ct yellow gold half eternity ring set baguette cut diamonds in a channel-type setting, ring size S, 1.6 gms *£100 - £150*

729

A 9ct yellow gold cluster ring set single diamond in a border of ten sapphires, ring size L, 4.1 gms *£120 - £150*

730

An 18ct yellow gold wedding band set three rows of small diamonds, ring size R 1/2, 6.8 gms *£180 - £220*

731

A 9ct yellow gold ring set small diamonds in a snowflake design setting, ring size N, 3.6 gms *£150 - £200*

733

A platinum half eternity ring set graduated diamonds in a tension channel-type setting, total 0.33 carat, ring size S, 3.1 gms *£180 - £220*



Lot 733

734

A butterscotch amber graduated bead necklace, 77 gms, overall l. 85 cm, largest bead measures w. 2.6 cm *£200 - £300*

735

Three black plush necklace display stands, h. 34.5 cm *£40 - £60*

**736**

A pair of yellow and white metal ear studs of flowerhead design set diamonds and rubies, overall 7 gms *£150 - £200*



Lot 734

737

A 9ct white gold crossover ring set a band of small diamonds, ring size N, 3.9 gms £80 - £120

738

An 18ct yellow gold crossover ring set two brilliant cut diamonds, total diamond weight approximately 0.4 carat, ring size O 1/2, 3.4 gms £200 - £250



Lot 738

739

An 18ct white gold ring set fancy yellow brilliant cut diamond in a four claw setting, the shoulders each set six further graduated white diamonds, central stone approximately 0.5 carat, ring size N 1/2, 2.9 gms £500 - £700



Lot 739

740

A continuous turquoise bead necklace, l. 121 cm, beads measure d. 1.1 cm, together with a similar bangle (2) £30 - £40

741

An 18ct white gold cluster ring set two bands of diamonds and rubies, ring size M, 6.5 gms £180 - £220

742

A 9ct yellow gold ring set four rows of small diamonds, total diamond weight approximately 0.5 carat, ring size P, 3.5 gms £100 - £150

743

A 9ct yellow gold ring set five sapphires in an inline setting, together with a 9ct yellow gold ring set three rows of small diamonds, overall 3.8 gms (2) £100 - £150

744

A 9ct yellow gold ring set diamond in an illusion setting, the shoulders each set a small diamond in a recessed star setting, ring size M, 1.2 gms £50 - £80

745

A pair of yellow metal ear pendants, each fleur-de-lis stud suspending a drop set oval opal, l. 3.5 cm, overall 2.2 gms £50 - £80

746

A platinum crossover ring set brilliant cut diamond in a four claw setting, stone approximately 0.75 carat, ring size N, 4.3 gms £700 - £900



Lot 746

747

An early 20th century 18ct yellow gold ring set five graduated diamonds in a pierced scrollwork setting, ring size V, 3.3 gms £180 - £220

748

A 9ct two colour crossover ring set two princess cut diamonds, ring size O, 3.4 gms £100 - £150



Lot 749

749

An 18ct white gold band ring set seven small diamonds within recessed settings on a matt shank, ring size M 1/2, 5.4 gms £180 - £220

750

A 9ct white gold fine boxlink necklace suspending a 9ct white gold pendant of bowed diamond shaped form set rubies and diamonds, pendant drop measures l. 2.5 cm, overall 3.8 gms £150 - £200

751

An 18ct white gold snakelink necklace suspending an 18ct matt white gold pendant set small diamond in a recessed setting, overall 5.9 gms, l. 39 cm £180 - £220

752

A 14ct yellow gold fine chainlink necklace suspending a 9ct yellow gold 'claddagh' pendant, pendant drop l. 1.9 cm, overall 3.5 gms £50 - £80

753

A 9ct yellow gold cluster ring set small emeralds and diamonds, ring size P, 3.6 gms £100 - £150



Lot 754

754

A 9ct yellow gold ring set marquis shaped mystic topaz within a border of small diamonds, ring size P, 2.8 gms £100 - £150

755

A 9ct yellow gold ring set amethyst in a four claw setting, together with a 9ct yellow gold ring set tanzanite, overall 4.7 gms (2) £70 - £90

756

A 9ct yellow gold ring set three rows of tanzanite, ring size P, 2.6 gms £40 - £60

757

A 9ct yellow gold florally engraved bracelet, 8.4 gms (af) £60 - £80

758

An 18ct yellow gold cuff bracelet having fine etched crosshatch decoration, 28.7 gms £650 - £700

759

A 9ct yellow gold curb link bracelet, 26 gms (af) £200 - £250

760

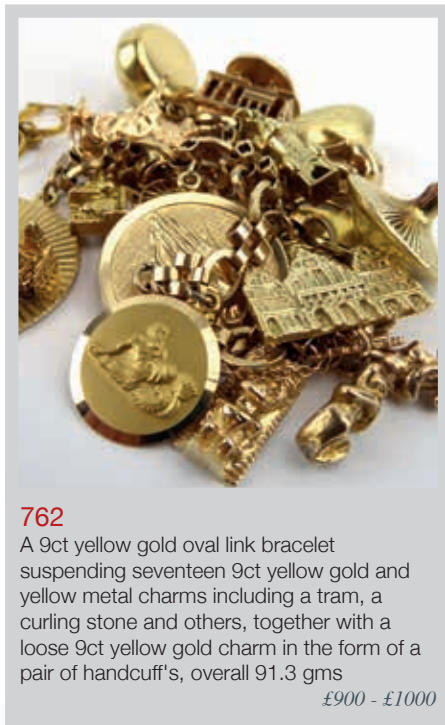
A yellow metal mounted oval brooch inset carved cameo depicting the three graces, l. 4.2 cm £40 - £60

761

An 18ct yellow gold dress ring set emerald cut citrine in a raised eight claw setting, stone measures 2.4 x 1.9 cm, ring size P, 22.7 gms £250 - £300



Lot 761



762

A 9ct yellow gold oval link bracelet suspending seventeen 9ct yellow gold and yellow metal charms including a tram, a curling stone and others, together with a loose 9ct yellow gold charm in the form of a pair of handcuff's, overall 91.3 gms £900 - £1000



Lot 763

763

A 9ct yellow gold three row brick link bracelet, 48.5 gms £500 - £600

764

A gentleman's yellow metal signet ring, ring size T, 11.1 gms £80 - £120



Lot 758

765

A 9ct yellow gold 'Mizpah' ring, ring size P 1/2, 2.5 gms *£30 - £40*

766

A 9ct yellow gold engraved wedding band, hallmarked for London 1974, ring size P, 3.3 gms *£30 - £40*

767

A gold plated s-link necklace suspending a 9ct yellow gold swivel fob set citrine, fob w. 2.6 cm *£50 - £80*

768

A late 19th/early 20th century yellow metal 'poison' ring set banded agate in a shield shaped lozenge with hinged section below, ring size M, 3.3 gms *£30 - £40*

769

A 9ct yellow gold ring set five graduated oval garnets in a wide setting, ring size O, 4.3 gms *£50 - £80*

770

A yellow metal ring of Etruscan design set smoky quartz in a raised knot-type setting, ring size G, 8.2 gms *£80 - £120*

771

A 19th century 15ct yellow gold ring set opal and amethyst in a diamond shaped scrollwork setting, hallmarked for Birmingham 1866, ring size M 1/2, 1.2 gms (af) *£30 - £40*

772

A 9ct white gold bar brooch set small pearls in the form of branch, w. 5 cm, 4.7 gms *£60 - £80*

773

An early 20th century yellow and white gold highlighted bar brooch in the form of a partridge set ruby and diamonds, w. 5.9 cm, 7.4 gms *£300 - £400*

774

A 9ct yellow gold bar brooch in the form of a foxes head, w. 5.6 cm, 4.1 gms, together with a yellow metal bar brooch (2) *£50 - £80*

Lot 773



Lot 776

775

A 19th century-style brooch of oval form set amethyst within a border of small pearls, hallmarked for London 1983, w. 2.3 cm, 7.2 gms *£150 - £200*

776

A 9ct yellow gold bracelet set five graduated amethysts within a diamond shaped engraved band and ropetwist border, internal w. 6.2 cm, 29.9 gms *£400 - £500*

777

A silver brooch in the form of a floral spray set three graduated cultured pearls, w. 4.5 cm *£40 - £60*

778

A metalware brooch of openwork form inset heart shaped smoky quartz-type stone, w. 5 cm, together with a similar brooch (2) *£40 - £60*

779

Two silver brooches modelled as a Siamese dancer and warrior, max l. 4.4 cm *£40 - £60*

780

A Victorian half sovereign dated 1894 *£80 - £120*



All estimates exclude buyer's premium of 21% including VAT (where applicable)

[@WHPeacock](https://www.whipeacock.com) [/WHPeacockAuctioneers](https://www.whipeacock.com)

Lot 795



781

A mixed parcel of silver and metalware jewellery including a necklet and matching bracelet set cultured pearls, a similar pair of cufflink's, a modern silver twist ring and other items (qty)

£30 - £40

782

A Victorian sovereign dated 1899

£180 - £220

783

An Edwardian sovereign dated 1909

£180 - £220

784

A sovereign dated 1911

£180 - £220

785

A sovereign dated 1912

£180 - £220

786

A Victorian shield back half sovereign dated 1887

£90 - £110

787

A Victorian shield back half sovereign dated 1890, together with a 1 dollar piece (drilled)

£100 - £150

788

A 22ct yellow gold wedding band, hallmarked for London 1915, ring size O. 10.7 gms

£180 - £220

789

An 18ct yellow gold ring set three graduated diamonds in recessed star settings, Chester hallmarks indistinct, ring size O, together with an 18ct yellow gold signet ring, overall 9.1 gms (2)

£180 - £220

790

A 9ct yellow gold florally engraved bracelet, internal w. 6.1 cm, 29.6 gms

£250 - £300

791

A 9ct yellow gold curb link bracelet with heart shaped padlock clasp, hallmarked for Birmingham 1908, 9.5 gms

£80 - £120

792

A 9ct yellow gold chainlink muff chain with lobster clasp, 25.7 gms (af)

£200 - £250

793

An Edwardian 9ct yellow gold brooch of marquise shaped form, a 9ct gold necklace suspending a 9ct yellow gold heart shaped locket and a pair of yellow metal hoops, overall 8.8 gms (4)

£60 - £100

794

A 19th century yellow metal ring set carved cameo depicting a classical female within a border of old cut diamonds, ring size L, together with five further 9ct yellow gold and yellow metal rings, overall 15 gms (af) (6)

£150 - £200

795

A yellow gold chainlink muff chain with lobster clasp and suspending an oval florally engraved locket, overall 44 gms

£380 - £420



796

An 18ct white gold boxlink necklace suspending an 18ct white gold pendant of circular form, d. 3 cm, 10.1 gms

£200 - £300

797

An 18ct yellow gold articulated link bracelet, 59.9 gms

£1100 - £1300

798

A pair of 18ct yellow gold ear studs, each set four pale blue stones, overall 1.5 gms £60 - £100

799

A pair of two colour ear studs of knot design, overall 1.2 gms £40 - £60

800

A pair of yellow metal ear studs of leaf design, overall 3.6 gms £70 - £90

801

An 18ct white gold boxlink necklace suspending a silver pendant of oval form set pale blue glass, chain 2.1 gms £60 - £100

802

A yellow metal pendant of openwork heart shaped form set red and clear paste, w. 1.9 cm, 2.5 gms £40 - £60

803

An 18ct yellow gold bar brooch set four small diamonds interspersed with three cultured pearls, w. 6.1 cm, 3.8 gms £80 - £120

804

A gentleman's 18ct yellow gold ring set two rows of small diamonds within a reeded band, ring size X, 12.6 gms £500 - £700



Lot 804

805

A yellow metal bark design pendant set four small cultured pearls set a sovereign dated 1958, overall 15.7 gms £280 - £320

806

An 18ct white gold brooch of openwork swept design set small diamond, w. 3.7 cm, 4.7 gms £120 - £150



Lot 797

807

A yellow metal rectangular link bracelet, 41.1 gms £450 - £500



Lot 807



Lot 808

808

A single strand continuous cultured Tahitian pearl necklace with gold plated clasp, pearl d. 7 mm, l. 56 cm, together with a pair of matching ear studs £300 - £400



Lot 809

809

A pair of white metal wedding bands, each set three small diamonds, ring sizes Y and Q, overall 11.3 gms £300 - £400

810

An 18ct yellow gold ring pave set small diamonds in a v-shaped setting within a reeded band, ring size M, 5.5 gms £150 - £200



Lot 810

811

A 9ct yellow gold figaro link necklace suspending a yellow metal pendant set 1/10 Krugerrand dated 1988, overall 11.2 gms
£150 - £200

812

A 9ct yellow gold ring set hematite and two small diamonds, ring size N, 3.5 gms
£50 - £80

813

A 9ct yellow gold dress ring set pale blue oval stone and small diamonds, ring size N 1/2, 2.3 gms
£50 - £80

814

An 18ct yellow gold ring set single brilliant cut diamond in an illusion setting, ring size J, 1.9 gms
£80 - £120

815

A 9ct yellow gold crossover ring set five small cinnamon diamonds, ring size O, 2.9 gms
£50 - £80



Lot 816

816

A platinum ring set princess cut diamond in a four claw setting, stone approximately 0.33 carats, ring size I, 4.1 gms
£200 - £300

817

A 9ct yellow gold ropetwist necklace suspending a yellow metal openwork pendant set an Edwardian half sovereign dated 1906 in a loose mount, overall 12.3 gms
£150 - £200

818

An 18ct yellow gold s-link necklace with lobster clasp, 10.1 gms
£180 - £220

819

A 9ct yellow gold figaro link necklace and matching bracelet and a 9ct yellow gold ropetwist bracelet, overall 14 gms, together with a part 9ct yellow gold bracelet (4)
£150 - £200

820

A 9ct yellow gold chainlink necklace, 3.11 gms, together two part gold and gold plated lockets (3)
£40 - £60

821

An early 20th century 9ct yellow gold bar brooch in the form of a song bird, together with a similar bar brooch, overall 3.3 gms
£40 - £60



Lot 822

822

A pair of 19th century 18ct yellow gold cufflink's of oval form, hallmarked for Deakin & Francis, Birmingham 1854, 13.5 gms
£250 - £300

823

A 19th century 18ct yellow gold elongated link watch chain with t-bar and lobster clasp, (clasp 15ct), hallmarked for Chester 1888, overall 67.5 gms
£1200 - £1400

824

An 18ct yellow gold signet ring set small old cut diamond in a recessed star setting, hallmarked for Birmingham 1925, ring size S 1/2, 5.6 gms
£100 - £150

825

An 18ct yellow gold ring set five graduated diamonds in a marquise shaped setting, ring size H, 2.2 gms, together with a 9ct yellow gold eternity ring, 2.6 gms (2)
£40 - £60



Lot 823

826

A 9ct yellow gold ring set five pink and clear stones in a rectangular setting, hallmarked for Birmingham 1993, ring size R 1/2, 2.2 gms
£40 - £60

827

A late 19th century 15ct yellow gold ring set oval garnet in a raised ten claw setting within engraved shoulders, hallmarked for Chester 1898, ring size T, 5 gms
£80 - £120

828

Two 9ct yellow gold wedding bands, each with laurel wreath type engraving, overall 4.9 gms
£50 - £80

829

A platinum ring set single brilliant cut diamond in a rubover crossover setting, ring size N, 5.5 gms
£80 - £120

830

An 18ct yellow gold ring set small diamonds and sapphires in an openwork flowerhead setting, ring size N 1/2, 4.1 gms
£80 - £120

831

A single strand slightly graduated pearl necklace with 9ct yellow gold marquise shaped clasp, largest pearl measures d. 6 mm, l. 50 cm
£40 - £60

832

A modern silver brooch in the form of an articulated frog, l. 7.3 cm, a modern silver expanding beaded necklace and a butterfly wing pendant necklace (3)
£30 - £50

833

An 18ct white gold ring set three princess cut diamonds in a square shaped setting, ring size K, 4.5 gms (af)
£400 - £500

834

A 14ct white gold ring set single brilliant cut diamond in a four claw setting, stone approximately 1.5 carats, ring size L 1/2, 2.8 gms,
£600 - £800



Lot 834

835

Sixteen loose oval cut emeralds, varying colour and size, approximate total weight 55 carats *with certification
£150 - £200



Lot 836

836

An 18ct yellow gold cocktail ring set four rows of brilliant cut diamonds within a circular undulating setting, ring size Q, 13.3 gms
£2000 - £2500



Lot 837

837

A gentleman's 14ct white gold ring set centrally with a single oval sapphire within stepped shoulders, stone approximately 2.45 carats, ring size T 1/2, 10.1 gms
£700 - £900

838

A 9ct yellow gold ring set cabochon lapis-type stone within a ropetwist border, ring size P 1/2, 4.2 gms
£40 - £60

839

A white metal bar brooch set centrally with a single diamond in a Belle Epoque-style openwork illusion setting, w. 6.9 cm, 3.8 gms
£60 - £100

840

A 14ct white gold boxlink necklace suspending an illusion openwork pendant set jade, overall 9.3 gms
£150 - £200

841

Five Chinese metalware mounted green jade pendants
£100 - £150

842

A Chinese yellow metal ring set baguette cut emerald in a rubover setting, ring size K, 7.7 gms
£400 - £600



Lot 842



Lot 843

848

A pair of 14ct yellow gold articulated cufflink's each in the form of an abacus, together with a matching tie pin, overall 13.5 gms (3)

£200 - £300

843

A yellow metal articulated link bracelet set thirteen graduated brilliant cut diamonds, each in a six claw setting, central stone approximately 0.5 carats, overall 6.7 gms

£2000 - £3000

849

A yellow metal stick pin, the finial in the form of a pair of entwined horseshoes and set turquoise and small pearls, l. 7.8 cm, together with a 9ct yellow gold stick pen set single cultured pearl (2)

£40 - £60



Lot 844

850

A gold plated pendant/brooch of flowerhead form set marquis shaped jade beads, together with a similar pendant (2)

£30 - £40

844

A Chinese yellow metal ring set cabochon jadeite in a raised rubover setting, stamped '22', ring size P, 15.3 gms

£400 - £600

851

A pair of 9ct yellow gold ear pendants set small diamonds and rubies in a foliate setting, overall 2.5 gms

£60 - £100

845

A 14ct yellow gold ring centrally set with six small diamonds in a flowerhead setting within an articulated 'halo' surround, ring size M, 3.4 gms

£200 - £300

852

A 9ct yellow gold dress ring set clear and pink coloured paste in a flowerhead setting, ring size M 1/2, 1.7 gms

£30 - £40



Lot 845

853

An early 20th century silver pendant set garnets in a flowerhead setting, l. 4.3 cm

£40 - £60

854

A late 19th/early 20th century yellow metal bar brooch set oval citrine within a border of small pearls, w. 5.9 cm

£50 - £80

846

An 18ct yellow gold ring set brilliant cut diamond in an eight claw setting, hallmarked for London 1966, stone approximately 0.5 carats, ring size N, 3.2 gms

£200 - £300



Lot 846

855

A 19th century yellow metal brooch of tiered flowerhead form set garnets and small pearls, d. 3.5 cm

£60 - £100

847

An 18ct white gold ring set single brilliant cut diamond in a square four claw setting, hallmarked for London 1984, ring size O, 3.1 gms

£150 - £200

856

A 19th century yellow metal mourning brooch of rococo design set pink teardrop stones within a scrollwork mount, with memory section verso, mount stamped 'MH' to lozenge, w. 4.5 cm

£120 - £150

857

A 9ct yellow gold ring set three graduated garnets interspersed with four smaller garnets in a raised setting, ring size Q, 4.1 gms £50 - £80

858

An Edwardian sovereign dated 1903 £180 - £220

859

A half sovereign dated 1913 £90 - £110

860

An early 20th century platinum ring set diamond in a raised six claw setting, stone approximately 0.5 carats, ring size O, 3.6 gms

£700 - £1000



Lot 861

861

An early 20th century platinum ring set brilliant cut diamond in a stepped six claw setting, stone approximately 2.2 carats, ring size N 1/2, 5.2 gms £3000 - £5000

862

An early 20th century 18ct yellow gold cluster ring set seven small diamonds, ring size M, 2.1 gms £80 - £120

863

A Victorian half sovereign dated 1895 £90 - £110

864

A 9ct yellow gold ring set oval cameo depicting a classical female head and shoulders, ring size L 1/2, together with a yellow metal and enamelled memory pendant (2) £40 - £60

865

An Eastern cuff bracelet inset semi-precious stones including lapis lazuli, turquoise and others, internal d. 6.3 cm £60 - £80

866

A 9ct yellow gold clip with coronet and 'B' finial, hallmarked for London 1973, l. 5.3 cm, 8.1 gms £40 - £60

867

Charles Horner 'Dorcas' No. 5 thimble £15 - £20

868

A 9ct yellow gold four bar gate link bracelet with heart shaped padlock clasp, 5.1 gms £60 - £80

869

A 9ct yellow gold ropetwist necklace, 3.4 gms £40 - £60

870

An 18ct yellow gold ring set small diamond in an illusion setting, 2.6 gms, together with two 9ct yellow gold rings, 5.7 gms (3) £120 - £150

871

An early 19th century 15ct yellow gold memory brooch of circular form having bow design border set small pearls and memory section verso engraved with a classical facade, w. 2.5 cm, together with a pair of similar ear pendants (3) £150 - £200

872

A late 19th/early 20th century yellow metal bracelet decorated with three x-shaped motifs set small pearls, internal w. 5.4 cm £50 - £80

873

A yellow metal chainlink necklace suspending an Edwardian 15ct yellow gold openwork pendant set topaz and small pearls, pendant drop 5.6 cm, overall 9.4 gms £300 - £400

Lot 873





Lot 874

874

A Victorian shield back, young head sovereign dated 1865 £250 - £300

875

A 9ct yellow gold mounted cameo brooch of oval form depicting a classical female head and shoulders, l. 4.1 cm £30 - £40

876

A late 19th century yellow metal mounted cameo brooch of oval form depicting figures by a fountain on a swivel mount with memory section verso within an acorn border, overall l. 6.7 cm £80 - £120

877

A silver bark design bracelet, hallmarked for Birmingham 1971, internal w. 6 cm, together with a silver signet ring of horseshoe design set green coloured stones (2) £40 - £60

878

An 18ct yellow gold brooch in the form of a lotus flower and set diamonds and emeralds, w. 3.2 cm, 10.2 gms £150 - £200

879

A 9ct yellow gold bricklink bracelet, 21.9 gms £200 - £300

880

A 9ct yellow gold chainlink bracelet suspending seventeen yellow gold and yellow metal charms including a riding crop, an enamelled riding cap, a terrier and others, overall 46 gms (lacking clasp) £300 - £400



Lot 880

881

An early 20th century metalware pendant necklace of Arts & Crafts design set mother of pearl and turquoise, pendant drop 5.5 cm, together with three 9ct yellow gold screw-type earrings (4) £50 - £80

882

An Egyptian yellow metal ring with hieroglyphic decoration, 4.8 gms, together with a 9ct yellow gold signet ring set small diamond, 3.7 gms (2) £100 - £150



883

A pair of 18ct white gold ear studs, each set five facet cut sapphires and six diamonds in a flowerhead setting, d. 1.1 cm, overall 6 gms £300 - £400



Lot 879

884

An 18ct white gold ring set Charles & Colvard moissanite, stone approximately 3 carats, ring size O, 4 gms £800 - £1000



Lot 884

885

A mixed parcel of 9ct yellow gold, yellow metal and gold plated jewellery including a ropetwist necklace, a signet ring, a small ring set marquise shaped jade and other items (qty) £150 - £200

886

A mixed parcel of silver and metalware jewellery including a ropetwist necklace, rings, cross pendants, earrings and other items (qty) £60 - £100



Lot 887

887

An 18ct yellow gold ring set brilliant cut diamond in a four claw setting, stone approximately 0.5 carats, ring size M 1/2, 2 gms £400 - £500

888

A 14ct yellow gold wedding band, together with a 9ct yellow gold half eternity ring set sapphires and diamonds, various sizes, overall 2.5 gms £40 - £60

889

A 9ct yellow gold three bar gatelink bracelet with heart shaped padlock clasp, 3.8 gms £30 - £40

890

A 9ct yellow gold s-link necklace, 5.2 gms £40 - £60

891

A 9ct yellow gold dress ring set circular citrine in a four claw setting, ring size M 1/2, 6.6 gms £40 - £60

892

A pair of 9ct yellow cufflink's of oval form, together with two 9ct yellow gold dress studs, overall 9.7 gms £80 - £120



Lot 893

893

A pair of silver and enamelled cufflink's for the Little Ship Club, hallmarked for London 1997 £30 - £40

894

A pair of 18ct yellow gold cufflink's of oval form, 11.8 gms £150 - £200

895

An early 20th century yellow metal bar brooch set five graduated old brilliant cut diamonds, central stone approximately 0.25 carats, w. 7.1 cm, 4.6 gms £200 - £300

896

An 18ct yellow gold cluster ring set seven small diamonds in heart shaped settings, hallmarked for Birmingham 1937, ring size O, 3.1 gms £120 - £150

897

A yellow metal mounted cameo brooch of oval form depicting a classical female head and shoulders, l. 4.6 cm, together with two 9ct yellow gold cameo rings and a 19th century yellow metal oval locket (4) £60 - £80

898

A sovereign dated 1925, housed in a circular easel back frame £180 - £220

899

A 15ct yellow gold bar brooch set oval opal, w. 6 cm, 3.1 gms £40 - £60



Lot 895

900

A 9ct yellow gold chainlink necklace suspending a 9ct yellow gold ingot pendant, 16.1 gms *£120 - £150*

901

An 18ct yellow gold ring set five graduated diamonds in an openwork setting, hallmarked for Chester 1913, ring size M, 3.3 gms *£120 - £150*

902

A 22ct yellow gold wedding band, hallmarked for Birmingham 1912, ring size M, 8.4 gms *£180 - £220*

903

A 9ct yellow gold eternity ring set paste in heart shaped settings, ring size M 1/2, 2.4 gms *£40 - £60*

904

A 9ct yellow gold dress ring set emerald cut alexandrite-type stone in a raised openwork setting, ring size Q 1/2, 6.2 gms *£120 - £150*

905

A 22ct yellow gold wedding band, 3.6 gms and a 9ct yellow gold signet ring, 2 gms (2) *£70 - £90*

906

An early 20th century 18ct yellow gold ring set diamond and two emeralds in rubover settings, ring size K, 1.6 gms *£80 - £120*

907

A 9ct yellow gold hinged bracelet set seven diamonds in recessed star settings within an engraved ground, internal w. 5.9 cm, 15.8 gms *£300 - £400*

908

A 9ct yellow gold mesh link necklet with lobster clasp, 12.3 gms *£150 - £200*



Lot 909

909

A Portuguese 18ct yellow gold articulated bricklink bracelet with fine engraved scrolled decoration, clasp stamped '800', 48.4 gms *£1000 - £1200*

910

A 9ct yellow gold mounted cameo brooch of oval form depicting a classical female figure head and shoulders, l. 4 cm *£50 - £80*

911

A silver and florally engraved hinged bracelet, hallmarked for Birmingham 1961, internal w. 6.4 cm *£20 - £30*

912

A 9ct yellow gold pendant set square cut amethyst within a border of diamonds, l. 1.7 cm, 1.6 gms *£100 - £150*

913

A 9ct yellow gold pendant set teardrop shaped iolite within a border of small diamonds, l. 2.1 cm, 2 gms *£80 - £120*

914

A 9ct two colour gold slider pendant of leaf shaped design set small diamond, l. 17 cm, 2.1 gms *£60 - £80*

915

A 9ct white gold wedding band with chevron engraved decoration, hallmarked for London 1978, ring size M, 3.2 gms *£80 - £120*

916

A 9ct yellow gold dress ring set oval cabochon garnet in an eight claw setting, ring size R 1/2, 5.1 gms *£80 - £120*



Lot 907

917

A single strand cultured pearl necklace with silver and marcasite set clasp, largest pearl d. 8 mm. l. 40 cm *£60 - £100*

918

A 9ct rose gold safety pin, 2.8 gms *£20 - £30*

919

A George III guinea dated 1785, with attached pendant mount *£200 - £250*



Lot 919



Lot 920

920

A George III guinea dated 1792, with attached pendant mount *£180 - £220*

921

A George sovereign dated 1821, with attached pendant mount *£180 - £220*

922

An Edwardian full sovereign dated 1908 *£180 - £220*

923

A Victorian half sovereign dated 1897 *£90 - £110*

924

An Edwardian half sovereign dated 1910 *£90 - £110*

925

In the manner of Amy Sandheim, an Arts & Crafts metalware necklace set purple, green and pale green jade beads and suspending a pendant of openwork design set pierced pale green jade, square cut purple and green jade and circular and oval cut opals, pendant w. 6.1 cm, together with a pair of matching screw-type ear pendants (3) *£800 - £1200*

926

An 18ct yellow gold brooch in the form of a bow and set sapphires and diamonds, w. 3.9 cm, 16.1 gms *£400 - £500*



Lot 925

927

A 15ct yellow gold bar brooch set circular green coloured stone, w. 6.5 cm, 3.9 gms *£80 - £120*

928

An 18ct yellow gold bar brooch set three diamonds and two small pearls, w. 5.3 cm, 3.1 gms *£100 - £150*

929

An early 20th century yellow metal and platinum highlighted pendant brooch of openwork form set small diamonds and pearls, l. 5 cm, 6.2 gms *£400 - £600*



Lot 929





Lot 930

930

A pair of 18ct yellow gold cufflink's of torpedo/circular form, 8.6 gms *£200 - £300*

931

A pair of 9ct yellow gold cufflink's of rectangular bevelled form, hallmarked for Birmingham 1926, 6.6 gms *£70 - £90*

932

A pair of 9ct yellow gold cufflink's of oval form with engraved decoration, hallmarked for Birmingham 1941, 7 gms gms *£80 - £120*

933

A pair of 9ct yellow gold cufflink's of rectangular form with engraved decoration, hallmarked for Chester 1932, 3 gms *£40 - £60*

934

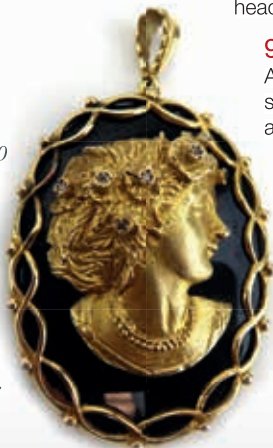
A 9ct white gold elongated link necklace and 9ct yellow gold boxlink necklace, overall 5.6 gms, together with a silver snakelink necklace (3) (af) *£40 - £60*

935

An 18ct yellow gold fancy link necklace, 10.1 gms, together with a 9ct yellow gold wedding band, 2.5 gms (2) *£70 - £90*

936

A 9ct yellow gold curb link bracelet, 10.7 gms *£90 - £110*



Lot 937

937

A black onyx pendant of oval form mounted in 9ct yellow gold and depicting a female beauty wearing a diamond set garland, hallmarked for London 1977, l. 6.2 cm *£500 - £700*

938

A child's enamelled metalware bracelet with heart shaped drop, a 9ct yellow gold St Christopher pendant, a yellow metal brooch of arrow and horseshoe design set small pearls and a gold coloured pen (4) *£50 - £80*

939

A 9ct yellow gold dress ring set red coloured stones and two 9ct yellow gold bracelets overall 7.4 gms, together with two silver dress rings (5) *£60 - £100*

940

A mixed parcel of jewellery comprising a yellow metal mounted cross pendant, together with a metalware whistle, a Charles Horner hat pin finial, a bar brooch, a swivel fob, a coin and a modern fob watch (qty) *£40 - £60*

941

An 18ct yellow gold five stone diamond ring, stones approximately 0.25 carats each, ring size P, 3.4 gms *£400 - £600*



Lot 941

942

An 18ct yellow gold mounted cameo brooch of oval form depicting a classical female figure head and shoulders, l. 2.9 cm *£50 - £80*

943

A 9ct yellow gold ropetwist necklace suspending a 9ct yellow gold pendant set amber, pendant drop 4.5 cm *£40 - £60*

944

Two 9ct yellow gold dress rings set smoky quartz and garnet, various sizes, overall 8 gms *£80 - £120*

945

A silver Albert watch chain suspending a silver vesta case, various dates and makers, 1.5 ozs *£40 - £60*

946

An 18ct yellow gold ring set three graduated diamonds interspersed with two sapphires, central stone approximately 0.25 carats, ring size M, 4.2 gms £300 - £400



Lot 946

952

A pair of 18ct two colour ear studs of spiral form each set forty-one small brilliant cut diamonds, together with a matching pendant, overall 10.1 gms (3) £400 - £600

953

Spare lot

954

An early 20th century yellow and white metal highlighted pendant brooch of flowerhead form set small diamonds and pearls in the belle epoque manner, d. 2.7 cm, 10.3 gms £150 - £200

947

An 18ct yellow gold ring set oval emerald and two small diamonds, ring size N, 2.5 gms £200 - £300



Lot 947

948

An 18ct yellow gold ring set circular emerald and two small diamonds, diamond approximately 0.25 carats each, 4.2 gms £400 - £500



Lot 948

955

A late 19th century yellow metal stick pin with cluster finial set oval opal and rose cut diamonds, cluster l. 1.6 cm, together with four further yellow metal stick pins, overall 9.2 gms (5) £100 - £150

956

A Josephine Baker bakelite/moulded plastic brooch in the form of a female beauty head and shoulders wearing a garland of fruit, l. 9 cm £50 - £80

949

A pair of Theo Fennell 18ct yellow gold ear studs of disc form, each set centrally with a green tourmaline, overall 7.5 gms, with case and bag £300 - £400

950

A Messika of Paris 18ct yellow gold 'Ajoure' ring in the form a butterfly and set small diamonds, ring size O, 4.2 gms, with case and bag £300 - £400



Lot 950

957

A 9ct yellow gold double Albert watch chain with t-bar and two lobster clasps and suspending a 9ct yellow gold St Christopher pendant, overall 38.8 gms £350 - £400

958

Spare lot

959

A 22ct yellow gold wedding band, hallmarked for London 1960, ring size N, 5.6 gms £90 - £110

951

An 18ct white gold ring set brilliant cut diamond in a ten claw setting, stone approximately 1.12 carats, ring size W, 2.6 gms £1500 - £2000



Lot 951

960

A 9ct yellow gold flat curb link necklace with lobster clasp, a small necklace section, a 9ct yellow gold wedding band and a yellow metal ring set five garnet (one missing), overall 11.1 gms (4) £90 - £110



Lot 952



Lot 961

968

An early 20th century platinum cluster ring set nine diamonds in a flowerhead rubover setting, ring size I, 2.5 gms *£300 - £400*

961

A 9ct yellow gold and florally engraved hinged bracelet, hallmarked for Birmingham 1962, internal w. 6.1 cm, 27.8 gms *£200 - £250*

962

A banded agate graduated bead necklace, l. 90 cm *£20 - £30*

963

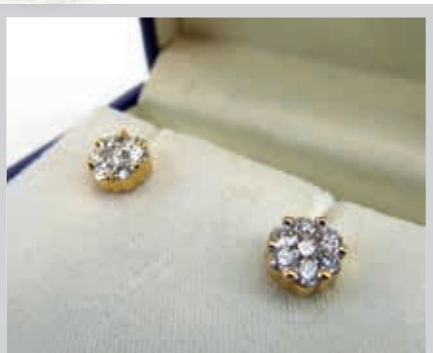
A mottled green jade bangle, internal d. 5.9 cm *£40 - £60*

964

An 18ct white gold ring set oval sapphire in a four claw setting, the shoulders set small diamonds in illusion channel setting, ring size L, 3.7 gms *£300 - £400*



Lot 964



969

A pair of yellow metal ear studs, each set seven brilliant cut diamonds in a cluster setting, d. 7 mm, estimated total diamond weight approximately 1 carat, overall 4.5 gms *£500 - £700*

965

A 14ct yellow gold fine curb link bracelet suspending a 9ct yellow gold florally engraved oval locket, overall 10.9 gms *£100 - £150*

966

An early 20th century 18ct yellow gold and platinum highlighted cluster ring set nine diamonds in a flowerhead setting, central stone approximately 0.25 carats, ring size K 1/2, 2.2 gms *£300 - £400*

967

A French yellow metal ring set cultured pearl in an entwined setting, ring size N, 2.9 gms *£100 - £150*



Lot 966



Lot 968

970

A malachite graduated bead necklace, largest bead d. 1.2 cm, l. 54 cm, together with three malachite bangles (4) *£40 - £60*

971

Six silver and metalware hinged and cuff bracelets of varying design *£50 - £80*

972

A pair of Indian yellow metal bangles with pierced decoration and set white and pink glass, internal d. 6.5 cm *£80 - £120*

973

A Tiffany & Co. silver chainlink bracelet with double heart drops, with green fabric pouch *£40 - £60*

974

A black jewellery box containing a quantity of costume jewellery including a silver hinged bracelet, earrings, brooches, pendant necklaces and other items (qty) *£60 - £80*

975

A green jade bangle, internal d. 5.7 cm *£50 - £80*

976

A pale green/white jade bangle, internal d. 5.9 cm *£50 - £80*

977

A green/purple jade bangle, internal d. 6.1 cm *£50 - £80*

978

A pale green jade bangle, internal d. 5.9 cm *£50 - £80*

979

A pale green jade bangle, internal d. 6.4 cm *£50 - £80*

980

A mottled green jade bangle, internal d. 6 cm *£150 - £200*

981

A green jade bangle, internal d. 5.8 cm *£150 - £200*

982

A green jade bangle, internal d. 6.2 cm *£150 - £200*

983

A green jade bangle, internal d. 6.2 cm *£150 - £200*

984

A green jade bangle, internal d. 6.2 cm *£150 - £200*

985

A green jade bangle, internal d. 5.8 cm *£150 - £200*

986

A green jade bangle, internal d. 5.9 cm *£150 - £200*

987

A green jade bangle, internal d. 5.8 cm *£150 - £200*

988

A green jade bangle, internal d. 6.2 cm *£150 - £200*

989

A pale green jade bangle, internal d. 5.9 cm *£150 - £200*

990

A pale green/brown jade bangle, internal d. 6.2 cm *£150 - £200*

991

A pale green/brown jade bangle, internal d. 5.9 cm *£150 - £200*

992

A pale green/brown jade bangle, internal d. 5.7 cm *£150 - £200*

993

A pale green/brown jade bangle, internal d. 6.1 cm *£150 - £200*

994

A pale green/brown jade bangle, internal d. 5.9 cm *£150 - £200*

995

A pale green/brown jade bangle, internal d. 5.9 cm *£150 - £200*

996

A circular pale green/red jade pendant, d. 4.9 cm, together with a similar pendant (2) *£50 - £80*

997

A carved green jade pendant of heart shaped form l. 2.1 cm *£50 - £80*

998

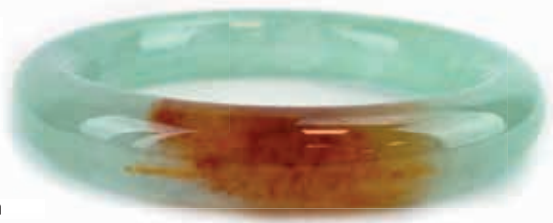
A group of nineteen carved jade pendants including an example in the form of a teapot l. 4.9 cm, varying colours (19) *£200 - £300*

999

A mottled green carved jade bangle, internal d. 5.8 cm *£80 - £120*

1000

A graduated pale green jade necklace, max d. 9 mm, l. 41.5 cm *£80 - £120*



Lot 992

1001

A 10ct white gold filled ladies manual wind wristwatch by Omega, the tonneau shaped dial with baton numerals on an articulated bracelet strap, dial w. 1 cm *£80 - £120*

1002

A 1960's unisex stainless steel manual wind wristwatch by Rolex, the circular dial with gold coloured Arabic numerals and second hand section with luminous hands on a later expanding bracelet strap, dial d. 2.5 cm *£150 - £200*



Lot 1003

1003

A 1970's gentleman's stainless steel cased Speedmaster Professional Mark II manual wind wristwatch by Omega, the circular grey dial with baton numerals and subsidiary dials within a black bezel on an articulated bracelet strap, dial d. 3.8 cm, with box and papers *£800 - £1200*

1004

Two silver cased open face pocket watches, a silver cased fob watch (later converted to a wristwatch), a silver cased wristwatch, a base metal cased Goliath watch and a modern pocket watch and chain (6) *£80 - £120*

1005

A 1950's gentleman's manual wind wristwatch by Cortebert, the circular dial of globe form reading 'Sanctus Annus' on a leather bracelet strap, dial d. 3.3 cm *£100 - £150*



Lot 1006

1006

A gentleman's chronograph wristwatch, the circular dial with gold coloured Arabic and baton numerals and two subsidiary dials on a later plated expanding bracelet strap, dial marked 'Chronographe Suisse, Antimagnetique, 17 rubis', dial d. 3.5 cm *£300 - £400*



1007

A gentleman's chronograph wristwatch, the circular dial with gold coloured Arabic and dot markers and two subsidiary dials on a later plated expanding bracelet strap, dial marked 'Universal Geneve, Uni-Compax', dial d. 3.1 cm *£300 - £400*

1008

A ladies 9ct yellow gold 'Star' wristwatch by Bentima, the circular dial with gold coloured baton numerals on a 9ct yellow gold articulated bracelet strap, dial d. 1.1 cm, overall 17.1 gms *£80 - £120*

1009

A late 19th/early 20th century ladies 9ct yellow gold cased fob watch, the engraved dial with black Roman numerals within an engraved case on a fancy link chain, lobster stamped '9ct', dial d. 3.3 cm, overall 51 gms *£100 - £150*



Lot 1010 (part)

1010

An early 20th century gentleman's 18ct yellow gold cased dress pocket watch by Lip, the circular dial with gold coloured Arabic numerals and second hand section on a textured ground within a geometrically engine turned case, dial d. 4 cm, overall 65 gms, cased, together with a yellow metal propelling pencil (2) *£300 - £400*

1011

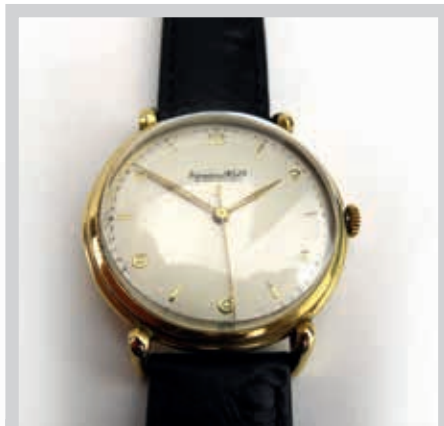
A gentleman's stainless steel cased automatic wristwatch by Longines, the circular silvered dial with baton numerals on a later faux crocodile skin strap, dial d. 3 cm, cased *£100 - £150*

1012

A ladies 18ct yellow gold wristwatch by Gernor, the circular silvered dial with gold coloured Arabic and baton numerals on a brick design articulated link bracelet strap, dial d. 1.2 cm, overall 21.3 gms *£200 - £300*

1013

A gentleman's stainless steel cased 'Tango' wristwatch by Raymond Weil, the circular white dial with silvered Roman numerals and date aperture on an articulated bracelet strap, dial d. 2.7 cm *£40 - £60*



1014

An 18ct yellow gold manual wind wristwatch by the International Watch Co., the circular dial with gold coloured Arabic and baton numerals on a later leather strap, dial d. 3.1 cm *£600 - £800*

1015

An early 20th century gold plated open face pocket watch, the white enamel dial with black Arabic numerals and second hand section suspended on a plated figaro link watch chain, dial d. 4.1 cm *£60 - £80*

1016

An early 20th century gold plated open face pocket watch by Record, the white enamel dial with black Arabic numerals and second hand section within a plain case, dial d. 4.1 cm, together with a similar pocket watch (2) *£80 - £120*

1017

A unisex stainless steel 'VHP Perpetual Calendar' wristwatch by Longines, the circular white dial with silvered baton numerals and date aperture on an articulated bracelet strap, d. 2.8 cm, with box and papers *£150 - £200*

1018

A gentleman's stainless steel 'Touch' watch by Tissot, the circular dial with silvered Arabic and baton numerals and LCD display on a brown leather bracelet strap, dial d. 2.2 cm, with user manual *£80 - £120*

1019

Of Local Interest: A gentleman's yellow metal automatic wristwatch by Garrard, the circular dial with gold coloured Arabic numerals and second hand section on a later leather strap, dial measures w. 2.8 cm, cased *with London Brick Company Ltd. inscription £120 - £150

1020

A ladies yellow gold 'Museum' wristwatch by Zenith/Movado, the plain circular black dial with a gold dot marker at 12 o'clock on a black leather strap, dial d. 2 cm, with box £100 - £150



Lot 1023

1023

A mid-century gentleman's 9ct yellow gold cased wristwatch by Omega, the circular dial with Arabic and baton numerals on a later articulated bracelet strap, dial d. 2.9 cm, overall 66 gms, with box and papers £500 - £700

1024

A late 19th century 18ct yellow gold cased half hunter pocket watch by Benson, the white enamel dial with black Roman numerals and second hand section within a plain case decorated in blue enamel, dial d. 4.1 cm, case hallmarked for London 1899, overall 119.8 gms, contained in a fitted case with gilt tooled decoration £800 - £1200

1025

A 9ct yellow gold cased wristwatch, the white enamelled dial with black and red Arabic numerals and gold coloured dot markers on a later strap, together with a 9ct yellow gold wristwatch movement (2) £70 - £90

1026

An early 20th century ladies 9ct yellow gold cased wristwatch, the white enamel dial with black and red Roman numerals and gold coloured dot markers on an expanding bracelet strap, dial d. 1.9 cm, overall 19.5 gms £50 - £80



Lot 1021

1021

An early 20th century gentleman's yellow metal manual wind 'Oyster' wristwatch but Rolex, the circular dial with black Arabic numerals and second hand section within an octagonal case on a later expanding bracelet strap, dial d. 2.5 cm £500 - £700

1022

A silver cased open face pocket watch by Smiths, the circular dial with black Roman numerals and second hand section within an engine turned case, case hallmarked for Birmingham 1947, dial d. 4.1 cm £30 - £40

Lot 1024



1027

An early 20th century ladies 9ct yellow gold cased wristwatch, the circular dial with gold coloured Arabic numerals on a black moire silk strap, case hallmarked for Chester 1931, dial d. 2 cm, overall 14.1 gms *£30 - £50*

1028

A ladies 9ct yellow gold wristwatch by Avia, the circular dial with gold coloured baton numerals within a square case on a foliate articulated bracelet strap, dial d. 1.1 cm, overall 11.1 gms *£70 - £90*



1029

An 18ct yellow gold cased open face pocket watch by Murray, the white enamel dial with black Roman numerals and second hand section in an engine turned case, case hallmarked for London 1922, dial d. 3.9 cm, overall 56.9 gms *£300 - £400*

1030

Four early 20th century ladies 9ct yellow gold cased wristwatches by Benson, Rotary and others, overall 66.8 gms *£300 - £400*



Lot 1035

1031

A late 19th/early 20th century silver cased open face pocket watch by H. E. Peck, the white enamel dial with black Roman numerals and second hand section in an engine turned case suspended on an Albert watch chain, dial d. 3.9 cm *£70 - £90*

1032

A late 19th/early 20th century metalware cased full hunter pocket watch by Blondel, the white enamel dial with black Roman numerals and second hand section and centrally depicting a member of (?)German royalty within a florally engraved and engine turned case, movement numbered 52962, dial d. 4.2 cm *£50 - £80*

1033

A ladies 9ct yellow gold cased manual wind wristwatch by Omega, the circular dial with gold coloured baton numerals on an articulated bracelet strap, strap hallmarked for Birmingham 1979, dial d. 1.3 cm, overall 19.3 gms, cased *£200 - £300*

1034

A ladies 9ct yellow gold manual wind wristwatch by Accurist, the circular silvered dial with gold coloured baton numerals on a shell design articulated bracelet strap, together with a 9ct yellow gold wristwatch by Strega, overall 27.2 gms *£100 - £150*

1035

A ladies 9ct yellow gold quartz wristwatch by de Montford, the circular silvered dial with gold coloured Arabic numerals on an articulated bracelet strap, dial d. 1.6 cm, overall 12.3 gms *£100 - £150*

Lot 1033



1036

A ladies 9ct yellow gold wristwatch by Accurist, the rectangular dial with diamond marker at 12 o'clock on a three bar gatelink bracelet strap, dial w. 1.7 cm, overall 15.4 gms *£100 - £150*



Lot 1037

1037

A ladies 18ct white gold manual wind wristwatch by Certina, the square navy dial with baton numerals on a bark design bracelet strap, dial w. 1.1 cm, strap hallmarked for London 1977, overall 39.2 gms *£300 - £500*

1038

A ladies 18ct yellow gold manual wind wristwatch by Futura, the square dial with gold coloured Arabic and baton numerals on a leather cord strap, overall 9.5 gms *£80 - £120*

1039

A gentleman's gold plated manual wind wristwatch by Bulova, the circular silvered dial with gold coloured baton numerals and second hand section on an expanding bracelet strap, dial d. 3.1 cm, cased *£30 - £40*

1040

A gentleman's gold plated automatic wristwatch by Rotary, the circular silvered dial with gold coloured baton numerals and date aperture on a later leather strap, dial d. 3 cm, cased *£30 - £40*

1041

Spare lot

1042

A gentleman's gold plated kinetic wristwatch by Seiko, the circular dial with baton numerals and date aperture on a bracelet strap, dial d. 2.9 cm, cased *£30 - £40*

1043

A gentleman's gold plated automatic 'Seamaster' wristwatch by Omega, the circular dial with baton numerals and date aperture on a bracelet strap, dial d. 2.8 cm, cased *£80 - £120*

1044

A gentleman's stainless steel automatic wristwatch by Rotary, the circular dial with baton numerals and date aperture on a bracelet strap, dial d. 2.9 cm, cased *£30 - £40*

1045

A gentleman's 9ct yellow gold plated quartz wristwatch by Garrard, the circular dial with baton numerals and date aperture on a later leather bracelet strap, dial d. 2.9 cm, cased *£30 - £40*

1046

A gentleman's gold plated automatic wristwatch by Rotary, the circular dial with baton numerals and date aperture on a later leather strap, dial d. 3 cm, cased *£30 - £40*

1047

An early 20th century silver cased open face pocket watch by Walter Bistrick, the gold coloured dial with black Arabic numerals and second hand section within a black enamel decorated case, dial d. 4 cm *£40 - £60*

1048

A late 19th century silver cased open face pocket watch, the gilt highlighted foliate dial with gold coloured Roman numerals and second hand section within an engine turned case, case hallmarked for Chester 1891, dial d. 4.5 cm *£30 - £40*

1049

An early 20th century silver and parcel gilt open face pocket watch by Perfecta, the white enamel dial with black and red Arabic 24 hour numerals and second hand section within an engine turned case, dial d. 4 cm *£40 - £60*

1050

An early 20th century metalware cased open face pocket watch, the white enamel dial with black Arabic numerals and second hand section within an engine turned case, dial d. 3.8 cm, together with a similar pocket watch (2) *£30 - £40*

1051

Four late 19th/early 20th century American silver and metalware cased open face pocket watches by Waltham and others, each with a white enamel dial, black Roman numerals and second hand section, largest dial d. 4.3 cm
£150 - £200

1052

Five late 19th/early 20th century silver and metalware cased open face pocket watches, each with a white enamel dial, black Roman numerals and second hand section including an example by Henry Rust with fusee movement, dial d. 4.3 cm
£180 - £220

1053

A late 19th century open face pocket watch, the white enamel dial with black Roman numerals and second hand section with fusee movement within an engine turned case, case hallmarked for Chester 1886, dial d. 4.4 cm, together with a similar pocket watch (2)
£150 - £200

1054

A group of eight 19th century and later silver and metalware cased fob watches, largest dial d. 3.7 cm
£60 - £100

1055

A mixed group of eleven 19th century and later silver, metalware and gold plated open face pocket and fob watches of varying styles and designs
£200 - £250

1056

Four early 20th century base metal cased open face chronograph pocket watches by Tell and others, dials on average d. 4.7 cm
£40 - £60

1057

A mixed group of eleven 19th century and later silver, metalware and gold plated open face pocket and fob watches of varying styles and designs including an example by Omega, dial d. 3.5 cm
£80 - £120

1058

A mixed group of loose wristwatch dials (qty)
£30 - £40

1059

A mixed group of loose wristwatch movements (qty)
£100 - £150

1060

A mixed group of pocket watch movements, faces and parts (qty)
£40 - £60



1061

An early 21st century gentleman's stainless steel cased 'Reverso Duo Dial-Night & Day' wristwatch by Jaeger-LeCoultre, the rectangular dial in the Art Deco manner with black Arabic numerals and second hand section, the reverse with a grey dial, luminous numerals at 12, 3 and 9 o'clock and 24 hour section on an articulated bracelet strap, dial w. 1.9 cm, movement numbered 2055301, with box and papers, purchased 19.10.01
£4000 - £5000



Lot 1062

1065

A ladies early 20th century 9ct white gold cocktail wristwatch, the rectangular dial with black Arabic numerals within a diamond set bezel on an expanding bracelet strap, dial w. 1 cm, overall 16.9 gms
£150 - £200

1062

A gentleman's two colour stainless steel superlative chronometer 'Oyster Perpetual Datejust' wristwatch by Rolex, the circular silvered dial with diamond set hour markers and date aperture on a bracelet strap, dial d. 3 cm, with box and papers, first purchased in 1996 and serviced in 2005
£3500 - £4000

1063

A ladies two colour stainless steel superlative chronometer 'Oyster Perpetual Datejust' wristwatch by Rolex, the circular navy dial with baton numerals and date aperture on a bracelet strap, dial d. 2 cm, with box and papers, first purchased in 1993
£2000 - £2500

1064

A gold plated full hunter pocket watch by Junghans, the dial with gold coloured Arabic numerals and second hand section within an engine turned case, dial d. 4.2 cm
£40 - £60

1066

An early 20th century 18ct yellow gold wristwatch by Harwood, the circular silvered dial with gold coloured Arabic numerals and luminous hands within a plain case, overall 19.6 gms, together with a later strap
£150 - £200

1067

A gentleman's stainless steel cased automatic wristwatch movement by Heuer, the circular silvered dial with date aperture within a plain case, dial d. 3.1 cm (af)
£100 - £150



Lot 1063

1068

Spare lot

1069

A base metal cased open face pocket watch, a marcasite ladies wristwatch and an early 20th century ladies wristwatch movement (3) (af)
£20 - £30

1070

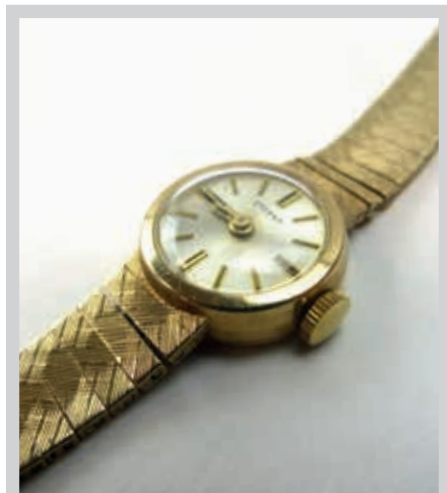
A modern gold plated miniature quartz pocket watch by Komos, dial d. 1.7 cm
£20 - £30



Lot 1065

1071

A 9ct yellow gold honeycomb link watch bracelet, 21.2 gms *£200 - £250*



1072

A ladies 9ct yellow gold manual wind wristwatch by Eterna, the circular silvered dial with gold coloured baton numerals on an articulated bracelet strap, dial d. 1.3 cm, overall 23 gms *£200 - £250*

1073

A silver cased open face pocket watch by Record, the white enamel dial with black Arabic numerals and second hand section within a plain case, case hallmarked for Birmingham 1935, dial d. 4.2 cm *£60 - £80*

1074

A yellow metal cased open face fob watch, the gold coloured dial with black Roman numerals within an engraved case, dial d. 3.6 cm, together with a silver cased open face fob watch (2) *£30 - £40*

1075

An 18ct yellow gold cased open face fob watch, the white enamel dial with black Roman numerals within a blue enamelled case, dial d. 3.1 cm, overall 35.7 gms (af) *£50 - £80*

1076

A ladies 9ct yellow gold cased wristwatch, the octagonal silvered gun metal dial with baton numerals on an articulated bracelet strap, dial w. 1.1 cm, overall 21.6 gms *£90 - £110*



Lot 1077 (reverse)

1077

A late 19th century 18ct yellow gold cased open face fob watch by J. H. Weeks, the white enamel dial with black Arabic numerals within a florally engraved case, case hallmarked for London 1888, movement numbered 26183, dial d. 3.5 cm, overall 53.6 gms *£300 - £400*

1078

An early 20th century 9ct yellow gold cased open face pocket watch, the white enamel dial with black Arabic numerals and second hand section within a plain case, dial d. 4.1 cm, overall 73.3 gms *£100 - £150*

Hammer Prices - November 2018

3	£110	71	£180	140	£130	217	£85	275	£36	348	£65	483	£110
4	£30	73	£140	141	£40	218	£100	277	£120	349	£32	485	£190
5	£100	74	£400	142	£60	219	£100	278	£150	350	£10	486	£170
8	£40	75	£220	143	£35	220	£150	279	£110	351	£10	487	£80
11	£500	76	£100	144	£200	221	£85	280	£140	352	£400	488	£100
12	£800	77	£100	145	£110	222	£60	281	£10	353	£24	489	£550
13	£150	79	£30	146	£95	223	£10	283	£110	355	£30	490	£100
17	£110	80	£24	147	£140	224	£190	284	£80	356	£22	491	£120
18	£60	82	£28	148	£140	225	£260	285	£110	357	£40	492	£130
19	£50	83	£40	149	£20	227	£55	286	£60	358	£220	496	£22
20	£140	84	£80	150	£35	228	£80	287	£85	359	£18	498	£32
21	£260	85	£170	151	£55	230	£120	288	£90	360	£30	500	£110
22	£150	86	£60	152	£100	232	£20	289	£120	364	£16	501	£80
23	£160	87	£40	153	£50	233	£130	290	£150	376	£10	503	£55
24	£1,800	88	£130	155	£30	234	£480	291	£500	380	£200	506	£80
25	£180	96	£160	156	£130	235	£150	292	£150	381	£100	508	£95
26	£180	97	£50	157	£50	236	£45	294	£260	383	£75	509	£14
27	£20	99	£85	158	£50	237	£180	295	£100	384	£40	511	£16
28	£220	100	£80	159	£50	238	£40	297	£170	385	£130	514	£80
29	£35	102	£45	160	£65	239	£400	298	£200	393	£26	515	£40
30	£45	103	£85	163	£100	240	£180	299	£460	400	£20	516	£40
31	£45	104	£100	165	£100	241	£60	300	£290	402	£190	518	£80
32	£55	105	£30	167	£70	242	£75	301	£50	404	£30	522	£160
33	£180	106	£40	168	£55	243	£280	302	£120	405	£85	524	£50
35	£55	107	£40	170	£20	245	£150	304	£100	406	£280	525	£40
36	£50	109	£55	171	£70	246	£40	306	£240	407	£32	552	£30
37	£130	110	£24	172	£70	247	£35	308	£10	408	£40	553	£70
38	£75	111	£60	176	£45	248	£5	309	£280	410	£10	554	£30
39	£130	112	£200	177	£650	249	£10	310	£280	411	£80	556	£50
42	£200	113	£40	178	£24	250	£45	311	£20	412	£14	563	£100
44	£480	114	£180	182	£100	252	£190	312	£10	413	£80	564	£55
46	£45	115	£70	188	£60	253	£30	313	£600	415	£65	566	£28
47	£30	116	£95	189	£50	254	£320	316	£80	416	£100	567	£65
48	£400	117	£18	194	£55	255	£75	317	£20	418	£1,500	571	£70
49	£50	118	£22	195	£50	256	£340	319	£30	419	£160	572	£70
50	£200	120	£200	197	£60	257	£50	320	£55	420	£160	573	£85
51	£70	121	£70	198	£40	258	£22	321	£65	421	£40	574	£60
52	£190	122	£280	199	£30	259	£40	324	£80	422	£75	575	£90
53	£140	123	£24	203	£220	260	£130	325	£110	423	£50	576	£520
54	£220	125	£190	204	£380	261	£540	328	£55	424	£150	577	£100
55	£200	126	£70	205	£400	263	£95	334	£15	426	£45	578	£140
56	£360	127	£60	207	£550	264	£55	335	£50	428	£65	580	£28
57	£140	130	£150	208	£75	265	£440	336	£50	429	£100	581	£34
59	£150	131	£460	209	£60	266	£120	337	£65	430	£90	582	£80
60	£240	133	£50	210	£40	268	£75	339	£100	431	£40	583	£36
61	£75	134	£95	211	£110	269	£20	341	£440	433	£20	584	£50
62	£340	135	£26	212	£80	270	£50	342	£24	435	£2,500	585	£40
63	£160	136	£340	213	£50	271	£60	344	£340	436	£2,700	586	£40
64	£130	137	£65	214	£80	272	£80	345	£600	438	£400	587	£65
65	£200	138	£50	215	£18	273	£50	346	£160	439	£220		
66	£200	139	£40	216	£30	274	£50	347	£30	482	£100		

W&H PEACOCK
AUCTIONEERS & VALUERS

Thursday 13th December
Sporting Guns, & Antique Arms

TO BE SOLD BY AUCTION

Commencing at 10.30am



S2 12 bore Browning B25 'Pintail' Limited Edition No. 420/500, over and under, ejector, 28 ins barrels, ½ & ¼ Teague chokes (with spare ¾ & ic chokes and key), ventilated rib, 2¾ ins chambers, deep acanthus scroll engraved action decorated with game birds in gold, single selective trigger, 14¼ ins well figured custom stock and forend, no. 8H4PZ00420, in Browning fitted hard case

Est £4,000 - £6,000

Bedford Auction Centre Eastcotts
Park, Wallis Way, Bedford, Bedfordshire MK42 0PE
01234 266 366 or guns@peacockauction.co.uk

peacockauction.co.uk

watch us...

visit our website and take a look at our Youtube video to get an understanding of our busy and exciting auction sales and other services we offer.

follow us...

join us on facebook and twitter to keep upto date with forthcoming auctions, events and sale highlights. Our website is packed up to date with current auction details and important information www.peacockauction.co.uk

visit us...

Our saleroom is open for entries Monday to Wednesday, viewing every Friday with our four sales commencing at 10am each Saturday

Auction Highlight



Antoine Blanchard (French, 1910-1988),
a Paris street scene,
oil on canvas,
31 x 44 cm

Hammer Price £2,700

NEXT VALUATION DAY
Friday 14th December

Bedford Auction Centre
10am - 3pm

Terms used in this catalogue have the following meanings.

Please note that all statements in this catalogue, regarding authorship, attribution, origin, date, age, provenance and condition are statements of opinion and are not treated as a statement of fact.

- 1. A N ARTIST**
In our opinion, the work is by the artist.
- 2. ATTRIBUTED TO A N ARTIST**
In our opinion, the work is of the period of the artist which may be whole or in part the work of the artist.
- 3. STUDIO, (CIRCLE OR WORKSHOP) OF A N ARTIST**
In our opinion, the work is of the period and closely relates to his style.
- 4. SCHOOL OF A N ARTIST**
In our opinion, the work is by a pupil or a follower of the artist.
- 5. MANNER OF A N ARTIST**
In our opinion, the work is in the style of the artist and is of a later period.
- 6. AFTER A N ARTIST**
In our opinion, this work is a copy of the artist.
- 7. ASCRIBED TO A N ARTIST**
In our opinion, this work is not by the artist, however, previous scholarship has noted this to be a work by the artist.
- 8. SIGNED (OR DATED)**
The work has a signature (or date) which is in our opinion is genuine.
- 9. BEARS SIGNATURE (OR DATE)**
The work has a signature (or date) which in our opinion is not authentic.