

The Key

大宅

SELECT DELUXE HOMES

Spotlight:
A Warm Sea Breeze
海風輕拂

Feature:
Lighting



LANDSCOPE

CHRISTIE'S
INTERNATIONAL REAL ESTATE

領域佳士得國際地產

PARK MEDITERRANEAN

逸瓏海滙

Luxury Resort Living at Sai Kung

- ◊ Nestled in nature, next to the delightful Sai Kung Outdoor Recreation Centre
- ◊ Surrounded by the magnificent natural beauty¹ of Hong Kong Geopark and Sai Kung Country Park²
- ◊ In the vicinity of Hebe Haven, Royal Hong Kong Yacht Club, Hong Kong Golf and Tennis Academy, and sports facilities
- ◊ Vibrant seaside community, with famous alfresco dining and a wide selection of international cuisines
- ◊ Resident clubhouse featuring a 42.8m-long (approx.) outdoor swimming pool, pool-side cabanas, and gardens with water features³
- ◊ Complimentary limousine services⁴ to and from Hang Hau MTR Station

Photo taken at Park Mediterranean

Name of Street and Street Number of the Development: 9 Hong Tsuen Road
District: Sai Kung Town Website Address: www.parkmediterranean.hk[#]

Enquiries: 8208 8223

The photographs, images, drawings or sketches shown in this advertisement / promotional material represent an artist's impression of the development concerned only. They are not drawn to scale and / or may have been edited and processed with computerized imaging techniques. Prospective purchasers should make reference to the sales brochure for details of the development. The vendor also advises prospective purchasers to conduct an on-site visit for a better understanding of the development site, its surrounding environment and the public facilities nearby. This advertisement / promotional material shall not constitute or be construed as giving any offer, representation, undertaking or warranty whether express or implied by the vendor.

△The images contained in this advertisement/ promotional material is photo taken at Park Mediterranean on 10 April 2018. The photos have been processed with computerized imaging techniques. The recreational facilities, layout, partitions, specifications, measurements, colours, materials, fittings, finishes, appliances, furniture, decorative items, plants, landscaping and other objects and the views thereof may not appear in the Development or its vicinity. The environment, buildings and facilities surrounding the Development may change from time to time. The photos and the information contained in the photos are for references only. This advertisement/ promotional material shall not constitute any express or implied offer, representation, undertaking or warranty given by the vendor.

1. The view of a unit is affected by the unit's orientation, level, surrounding buildings and environment. This advertisement/ promotional material shall not constitute or be construed as giving any offer, representation, undertaking or warranty given by the vendor as to the Development and the view thereof. 2. Source of information: website of Agriculture, Fisheries and Conservation Department - <http://afcd.gov.hk/eindex.html> 3. The details of clubhouse after completion may differ from that stated in this advertisement/ promotional material and are subject to the final plans approved by the relevant authorities. The opening hours and use of different facilities in the clubhouse are subject to the relevant laws, land grant, deed of mutual covenant, clubhouse rules and the situation of the environment. The facilities may not be overnight ancillary available upon completion and occupation of the Development and additional charges may apply upon usage. The names of the clubhouse facilities are yet to be confirmed and will not be shown in the Provisional Agreements for Sale and Purchase, Agreements for Sale and Purchase, Assignments and other deeds of the residential properties in the Development. The final names may differ from those stated in this advertisement/ promotional material. The Vendor reserves the right to change the clubhouse facilities and design without prior notice. 4. This complimentary limousine service will be available from the date of occupancy to 31 March 2020. The vendor reserves the right to amend or cancel the service, and the service is subject to the terms and conditions set out by the property management company. The description of the service as stated in this advertisement is for reference only, the manager of the Development reserves the right to amend or change the service and/ or its terms from time to time without prior notice.

Vendor: World Talent (Hong Kong) Limited Holding Company of the Vendor. Tsim Sha Tsui Properties Limited, Sino Land Company Limited, King Chance Development Limited and Skylane Global Limited. The Authorized Person for the Development and the firm or corporation of which the authorized person is a proprietor, director or employee in his or her professional capacity: Mr. Tang Kwok Wah Owen of Wong Tung & Partners Limited. Building contractor for the Development: Chan Wo Building Construction Limited. The firm of solicitors acting for the Owner in relation to the sale of residential properties of the Development: Mayer Brown JSM and Chu & Lau. Authorized institution that has made a loan, or has undertaken to provide finance, for the construction of the Development: The Hongkong and Shanghai Banking Corporation Limited. Other person who has made a loan for the construction of the Development: Sing-Ho Finance Company Limited. Park Mediterranean comprises 3 towers with a total of 285 residential properties. Prospective purchasers are advised to refer to the sales brochure for any information on the Development. #Website containing electronic copies of sales brochure, price list(s) and register of transaction. This advertisement / promotional material shall not constitute or be construed as giving any offer, representation, undertaking or warranty whether express or implied by the Vendor. This advertisement is published by the Vendor or is published by another person with its consent. Date of Printing: 21st June 2018



信和置業
Sino Land



Park
Mediterranean
Website



Sino Land
Mobile App



THE FUTURE OF COOKING

未來煮意

In recent years, the kitchen has moved away from being a simple work station for food preparation to becoming the focal point of a home – a space that connects family and friends. This is largely due to the growing popularity of open-plan schemes.

But connectivity goes beyond that of the social kind. Right on trend at the moment are smart kitchens, where multiple appliances are able to communicate with each other and can be controlled remotely. Voice control will soon become standard for multi-functional appliances. For example, a cook can ask an oven for recipe ideas, after which the appliance will choose the appropriate temperature and time settings. Meanwhile, smart refrigerators feature a door-mounted digital display that monitors stock levels and the freshness of the food – intelligent living that now extends its reach to the kitchen.

廚房的角色近年不斷蛻變，由僅是為準備食物而設的工作枱，搖身變成全屋的焦點——一個將親朋摯友緊密連繫的空間，這或多或少與開放式廚房愈漸普及有關。

不過，現今廚房提供的連繫已不只局限於社交層面。智能廚房是現時的新趨勢，在不久將來家中數部家庭電器將可互相連接及溝通，還可作遙距操控。語音操控亦將成為多功能廚房電器的基本功能，例如廚師可向焗爐發出食譜靈感的語音指示，焗爐便會建議最適合的烘培溫度和時間設定。此外，現時已有品牌推出智能雪櫃，櫃門成為輕觸式顯示屏，讓用家不用打開雪櫃，便可看到內裡的庫存和食物的新鮮程度，顯示智能生活正式打入廚房。

04 MONTHLY HIGHLIGHT

South Bay Towers, Repulse Bay
淺水灣 南灣大廈

06 SPOTLIGHT

A Warm Sea Breeze
海風輕拂

08 Southside & The Peak sale
南區及山頂 出售

11 HIGHLIGHT

Coral Villas, Chung Hom Kok
舂坎角 珊瑚小築

12 Midlevels Central & West sale
中半山及西半山 出售

14 HIGHLIGHT

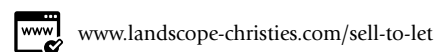
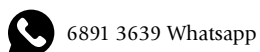
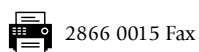
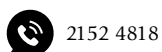
Jardine's Lookout
渣甸山

15 Redhill Peninsula, Tai Tam
大潭 紅山半島



5 Easy ways to list your property with The Key :

5個簡單方法在《大宅》刊登您的出售 / 出租物業 :



The information, text, photos, analyses and projections contained herein are provided solely for the convenience of prospective clients and no warranty or representation as to their accuracy, correctness or completeness is made by Landscape Christie's International Real Estate, Landscape Surveyors Limited, Landscape Realty Limited or the owners, none of whom shall have any liability or obligation with respect thereto. Interested parties should rely on their own investigations, interpretations and analyses in connection with the purchase or letting thereof. Information has been provided to us by sources deemed reliable, but no warranty or representation is made as to its accuracy, correctness or completeness. These offerings are made subject to contract, correction of errors, omissions, prior sale or lease, change of price or terms or withdrawal from the market without notice. The contents of The Key are for reference only and do not constitute all or any part of a contract. Copyright 2018 Each Office is Independently Owned and Operated

16 Midlevels East &
Happy Valley sale
東半山及跑馬地 出售

20 **FEATURE**
Lighting

22 Southside &
The Peak lease
南區及山頂 出租

24 Midlevels Central,
West & East lease
中半山、西半山及東半山 出租



26 Other districts
其他地區

26 French Property
法國物業

28 U.K. Properties
英國物業

32 Japanese Properties
日本物業

**Did
you
know**



We list your homes as
videos online for **FREE**
on our page?

See it on Facebook at

Landscape Christie's International Real Estate



PUBLISHED AND DISTRIBUTED BY



Landscape Christie's International Real Estate C-018733
Tel: +852 2866 0022 Fax: +852 2866 0015
Email: info@landscape-christies.com
Website: www.landscape-christies.com
Address: Units 601-4, 6/F, Sino Plaza,
255-257 Gloucester Road, Causeway Bay, Hong Kong

DESIGNED BY

ARCHITECTURE | DESIGN | PEOPLE
PERSPECTIVE

Tel: +852 2525 0287 Fax: +852 2526 3860
Email: info@perspectiveglobal.com
Website: www.perspectiveglobal.com
Address: Unit B, 1/F Cheung Wah Industrial Building,
10-12 Shipyard Lane, Quarry Bay, Hong Kong

**SCAN HERE
TO SUBSCRIBE
ONLINE**





Boss Design Ltd.
www.boss-interiors.com.hk

design + build



📍 Shop 44, G/F, Homewrold, Site 12, Whampoa Garden, Hunghom, KLN.
 ☎️ +852-2345 6773 📠 +852-2345 6938 ✉️ info@boss-interiors.com.hk





South Side comfort

南岸風情



South Bay Towers

南灣大廈
59 South Bay Road,
Repulse Bay

淺水灣 南灣道59號

2 bed, 2 bath, 1 carpark

Saleable 實用 1,112 s.f.

Sale 售 \$30,000,000

Inquiries 查詢

9871 6828 Louis Wong 黃先生

Webpage No. 網頁編號 126754

Can be sold via company
shares transfer
可以公司轉讓股份形式買賣

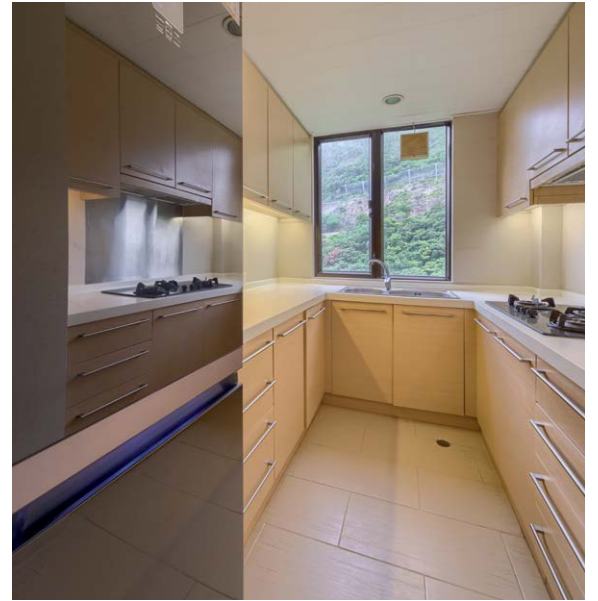
Tucked away on the south coast of Hong Kong Island, Repulse Bay is a popular destination for tourists, with its pristine crescent of sand, sparkling sea and resort-like vibe. It is also a top choice for well-heeled Hong Kong residents, with a winning combination of luxury high-rises and townhouses.

Situated on the area's peaceful South Bay Road, South Bay Towers comprises two 26-storey blocks of residential units overlooking the beach, boasting recreational facilities such as a communal outdoor swimming pool, a tennis court and a children's playground. The development is within reasonable driving distance of the shops, restaurants and bars of Stanley, while its proximity to the Hong Kong International School makes it popular with expatriates with young families.

Boasting a saleable area of 1,112 s.f., this spacious apartment commands fantastic views of the sea and country park thanks to the floor-to-ceiling windows in the living area. The unit consists of two bedrooms (one ensuite), a combined living and dining room, two bathrooms, a balcony, a maid's room and a covered car park.

The apartment is well-maintained and nicely decorated, with the living area adorned with a fake fireplace, marble walls and false ceiling lights. The area connects with the rest of the residence by means of a furnished corridor – creating a sense of spaciousness and continuity that extends to the rooms. The modern fitted bathrooms come complete with elegant marble floors and walls, while the kitchen is fully fitted with wall-length cabinets.

The apartment is available for sale at HK\$30 million.



隱密於港島南區的淺水灣，以水清沙幼的沙灘、碧波藍天及濃厚度假色彩著稱，是外國遊客的熱門旅遊點；區內亦分布不少低密度的高尚住宅和洋房別墅，是香港富裕一族的高端居住首選。

位於南灣道的南灣大廈，由兩幢樓高26層的住宅大廈組成，環境清幽寧靜，眺望南灣海灘，屋苑提供戶外游泳池、網球場及兒童遊樂場等會所設施。由屋苑駕車前往赤柱的商店、餐廳和酒吧十分便利。物業鄰近香港南區國際學校，深受居港的海外僑民家庭歡迎。

這個背山面海的闊落單位，實用面積達1,112平方呎，客廳設有偌大落地玻璃窗，盡享漂亮的海景和山巒景色。單位附設兩間睡房（包括一間套房）、相連的客飯廳、兩間浴室、一個露台、一個家備房及一個有蓋停車位。

單位裝潢雅致，保養簇新，客廳搭配火爐、雲石牆和假天花燈點綴，布置典雅的走廊將廳房相連，營造一份空間感和連貫性。裝修時尚的浴室配上貴氣的大理石牆身和地磚，廚房亦設備齊全，並裝有落地廚櫃。

單位現以3,000萬港元放售。





Ridge Court

淺水灣 冠園

21A-21D Repulse Bay Road

3 bed, 2 bath, 1 carpark

Nicely decorated 3-bedroom flat on upper Repulse Bay Road enjoys sweeping sea view
雅致裝修三房單位，眺望遼闊海景

Saleable 實用 1,780 s.f.

Sale 售 \$52,000,000

Inquiries 查詢 9026 2912 Michelle Chung 鍾小姐

Webpage No. 網頁編號 160534



Can be sold via company shares transfer
可以公司轉讓股份形式買賣



Park Place

淺水灣 雅柏苑

7 Tai Tam Reservoir Road

3 bed, 2.5 bath, 2 carparks

Spacious apartment at exclusive location with easy access to both CBD and Island South
淺水灣寬敞住宅，地段尊貴顯赫，毗鄰市中心及南區

Saleable 實用 2,113 s.f.

Sale 售 \$80,000,000

Inquiries 查詢 9662 2199 David Lau 劉先生

Webpage No. 網頁編號 108291



Pine Crest

淺水灣 松苑

65 Repulse Bay Road

4 bed, 3 bath,

2,020 s.f. garden, 1 carpark

Rare find spacious apartment with huge private garden in Repulse Bay
淺水灣罕有寬敞住宅，連偌大私家花園

Saleable 實用 1,917 s.f.

Sale 售 \$88,000,000

Inquiries 查詢 9028 0147 Jenson Au 區先生

Webpage No. 網頁編號 171237



Sea Cliff Mansions

淺水灣 海峰園

19A-19D Repulse Bay Road

4 bed, 2.5 bath,

2,600 s.f. roof, 1 carpark

Rare 4-bedroom penthouse with roof top enjoying Southside sea view
罕有四房頂層單位，連天台，飽覽南區優美海景

Saleable 實用 1,961 s.f.

Sale 售 \$95,000,000

Inquiries 查詢 9026 2912 Michelle Chung 鍾小姐

Webpage No. 網頁編號 16797



Villa Helvetia

淺水灣 雲濤別墅

69 Repulse Bay Road

2 bed, 2 bath, 2 carparks

Tastefully decorated low-rise penthouse enjoys picturesque views
品味裝修低密度頂層單位，美景如畫

Saleable 實用 1,870 s.f.

Sale 售 \$103,000,000

Inquiries 查詢 9803 2216 Annie Lee 李小姐

Webpage No. 網頁編號 31438



Can be sold via company shares transfer
可以公司轉讓股份形式買賣



Grosvenor Place

淺水灣 淺水灣道117號

117 Repulse Bay Road

4 bed, 4 bath, 1 carpark

High floor zone 4-bedroom apartment with balcony overlooking sublime sea view
高層四房單位，連露台，俯瞰壯麗海景

Saleable 實用 1,974 s.f.

Sale 售 \$120,000,000

Inquiries 查詢 9803 2216 Annie Lee 李小姐

Webpage No. 網頁編號 139961



全新裝修花園洋房

Newly renovated house in exclusive private estate

38 Black's Link
深水灣 布力徑38號



Stunning views of Deep Water Bay golf club, the beach and rolling hills

- Private terrace and well manicured landscaped garden
- Private Lift
- Outdoor swimming pool and tennis court



Rental 租 \$438,000 per month (Exclusive)

Saleable 實用 4,780 s.f.

Inquiries 查詢:
9011 5499 Yuky Chung 鍾小姐
Webpage No. 網頁編號: 103456





Albany Court

薄扶林 雅鑾閣

51 Bisney Road

2 bed, 2 bath, 1 carpark

Nicely decorated 3-bedroom low-rise at quiet enclave of Pokfulam

雅致裝修三房低密度單位，地段寧靜

Saleable 實用 1,396 s.f.

Sale 售 \$28,000,000

Inquiries 查詢 9648 6082 Christine Chong 莊小姐

Webpage No. 網頁編號 137468



The Redhill Peninsula

大潭 紅山半島

18 Pak Pat Shan Road

3 bed, 2 bath, 2 carparks

Full sea view apartment with comprehensive clubhouse facilities in tranquil setting

全海景住宅，連完善會所設施，環境寧靜

Saleable 實用 1,575 s.f.

Sale 售 \$36,000,000

Inquiries 查詢 6517 8785 Karen Shum 沈小姐

Webpage No. 網頁編號 123101



8-14 Cape Road

春吹角 環角道8-14號

4 bed, 2 bath,

490 s.f. terrace, 1 carpark

Lovely 4-bedroom low-rise with private terrace in greenery settings

精品四房低密度單位，連私家平台，環境翠綠

Saleable 實用 1,481 s.f.

Sale 售 \$48,000,000

Inquiries 查詢 9648 6082 Christine Chong 莊小姐

Webpage No. 網頁編號 125896



The Redhill Peninsula

大潭 紅山半島

18 Pak Pat Shan Road

3 bed, 2.5 bath,

857 s.f. garden, 1 garage

Lovely townhouse with ample open space enjoys splendid sea view

大潭精品洋房，享充裕戶外空間，眺望壯麗海景

Saleable 實用 2,583 s.f.

Sale 售 \$80,000,000

Inquiries 查詢 6188 1398 Josephine Yuen 阮小姐

Webpage No. 網頁編號 158599



The Redhill Peninsula

大潭 紅山半島

18 Pak Pat Shan Road

4 bed, 2.5 bath,

842 s.f. garden, 2 carparks

Sea view garden townhouse in peaceful neighbourhood

大潭海景花園洋房，地段寧靜怡人

Saleable 實用 2,584 s.f.

Sale 售 \$90,000,000

Inquiries 查詢 9011 5499 Yuky Chung 鍾小姐

Webpage No. 網頁編號 168106



Can be sold via company shares transfer
可以公司轉讓股份形式買賣

Stanley Knoll

赤柱 赤柱村道42號

42 Stanley Village Road

3 bed, 2 bath,

1,347 s.f. terrace, 2 carparks

Commodious sea view duplex with private terrace in tranquil location

寬敞海景複式單位，連私家平台，地段清幽恬靜

Saleable 實用 2,595 s.f.

Sale 售 \$105,000,000

Inquiries 查詢 9648 6082 Christine Chong 莊小姐

Webpage No. 網頁編號 35883





Villa Rosa

大潭 玫瑰園

88 Red Hill Road

4 bed, 4.5 bath,

481 s.f. roof, 2 carparks

Excellent value hilltop garden 4-bedroom house with breathtaking sea views

優質四房花園洋房，坐擁壯麗海景

Saleable 實用 3,314 s.f.

Sale 售 \$120,000,000

Inquiries 查詢 9026 2912 Michelle Chung 鍾小姐

Webpage No. 網頁編號 107188



Can be sold via company shares transfer
可以公司轉讓股份形式買賣



Detached House in Stanley

赤柱獨立屋

500 s.f. garden, 2 garages

Contemporary single garden house with private pool at secluded location

當代時尚獨立屋，連私家游泳池，地段隱逸寧靜

Saleable 實用 2,060 s.f.

Sale 售 \$195,000,000 \$175,000,000

Inquiries 查詢 9871 6828 Louis Wong 黃先生

Webpage No. 網頁編號 180485



Can be sold via company shares transfer
可以公司轉讓股份形式買賣



Strawberry Hill

山頂 紅莓閣

8 Plunkett's Road

3 bed, 2.5 bath,

400 s.f. garden, 2 carparks

Colonial 3-bedroom townhouse in well managed estate at the Peak

英式三房排屋，屋苑管理完善

Saleable 實用 2,945 s.f.

Sale 售 \$195,000,000

Inquiries 查詢 9871 6828 Louis Wong 黃先生

Webpage No. 網頁編號 5733



The Hazelton

壽臣山 榛園

6 Shouson Hill Road

6 bed, 4.5 bath,

732 s.f. garden, 2 garages

Deluxe townhouse with ample alfresco space in tranquil Shouson Hill

壽臣山豪華洋房，戶外空間充裕，地段寧靜

Saleable 實用 2,646 s.f.

Sale 售 \$200,000,000

Inquiries 查詢 6188 1398 Josephine Yuen 阮小姐

Webpage No. 網頁編號 43960



Can be sold via company shares transfer
可以公司轉讓股份形式買賣



12-16 Tai Tam Road

大潭 大潭道12-16號

5 bed, 4.5 bath,

1,569 s.f. terrace & roof, 2 carparks

Contemporary waterfront garden facing south east house with private pool

當代時尚臨海正東南花園洋房，連私家游泳池

Saleable 實用 3,350 s.f.

Sale 售 \$218,000,000

Inquiries 查詢 9803 2216 Annie Lee 李小姐

Webpage No. 網頁編號 127174



Panorama Terrace 淺水灣 蕙園

12 South Bay Road

4 bed, 3.5 bath,

1,000 s.f. garden, 2 carparks

4-bedroom townhouse with large garden in quiet enclave of Repulse Bay

淺水灣四房洋房，連偌大花園，地段隱逸寧靜，可租可售

Saleable 實用 3,229 s.f.

Sale 售 \$250,000,000 (Lease 租 \$200,000)

Inquiries 查詢 9648 6082 Christine Chong 莊小姐

Webpage No. 網頁編號 4868





Eredine

山頂 加列山道38號

38 Mount Kellett Road

5 bed, 3 bath, 1 carpark

Large 5-bedroom apartment with balcony overlooking sublime Southside sea views 偌大五房住宅，連露台，俯瞰優美南區海景

Saleable 實用 2,786 s.f.

Sale 售 \$123,000,000

Inquiries 查詢 9011 5499 Yuky Chung 鍾小姐

Webpage No. 網頁編號 1628



Can be sold via company shares transfer
可以公司轉讓股份形式買賣



39 Deep Water Bay Road

深水灣 深水灣道39號

4 bed, 4 bath,
1,231 s.f. terrace, 2 carparks

Rare on market Deep Water Bay garden house in renowned location 罕有深水灣花園洋房，位處尊貴顯赫地段

Saleable 實用 2,938 s.f.

Sale 售 \$340,000,000

Inquiries 查詢 6188 1398 Josephine Yuen 阮小姐

Webpage No. 網頁編號 128114



56 Repulse Bay Road

淺水灣 淺水灣道56號

6 bed, 5 bath,
1,545 s.f. roof, 3 carparks

Tastefully decorated townhouse with private rooftop at Repulse Bay waterfront 淺水灣海濱品味裝修洋房，連私家天台

Saleable 實用 5,076 s.f.

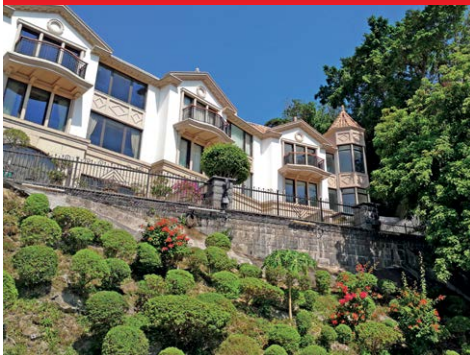
Sale 售 \$380,000,000

Inquiries 查詢 9648 6082 Christine Chong 莊小姐

Webpage No. 網頁編號 49726



Can be sold via company shares transfer
可以公司轉讓股份形式買賣



Bay Villas

壽臣山 南源

57-71 Shouson Hill Road

4 bed, 4.5 bath,
603 s.f. terrace, 2 carparks

Brand new decorated townhouse overlooking magnificent Deep Water Bay 壽臣山全新裝修排屋，俯瞰壯麗深水灣

Saleable 實用 3,680 s.f.

Sale 售 \$400,000,000

Inquiries 查詢 9662 2199 David Lau 劉先生

Webpage No. 網頁編號 135517



Barker Road

山頂 白加道

5 bed, 6.5 bath,
1,217 s.f. terrace, 2 carparks

Rare 5-bedroom townhouse overlooking Victoria Harbour View 罕有五房洋房，俯瞰維港美景

Saleable 實用 5,700 s.f.

Sale 售 \$830,000,000

Inquiries 查詢 9093 3381 Stephen Chan 陳先生

Webpage No. 網頁編號 175432



Carmelia

赤柱 赤柱村道60號

60 Stanley Village Road

4 bed, 4.5 bath, 2 carparks

Rare colonial townhouse in tranquil area with spacious garden and terraces 罕有英式洋房，地段寧謐，連偌大平台花園

Saleable 實用 4,158 s.f.

Sale 售 Open Offer

Inquiries 查詢 9871 6828 Louis Wong 黃先生

Webpage No. 網頁編號 84478



Repulse Bay Belleview Garden

淺水灣 淺水灣麗景花園

5 Belleview Drive

4 bed, 4.5 bath, 3,307 s.f. terrace, 2 carparks

Nicely decorated home with 4 ensuite enjoys splendid view of Repulse Bay

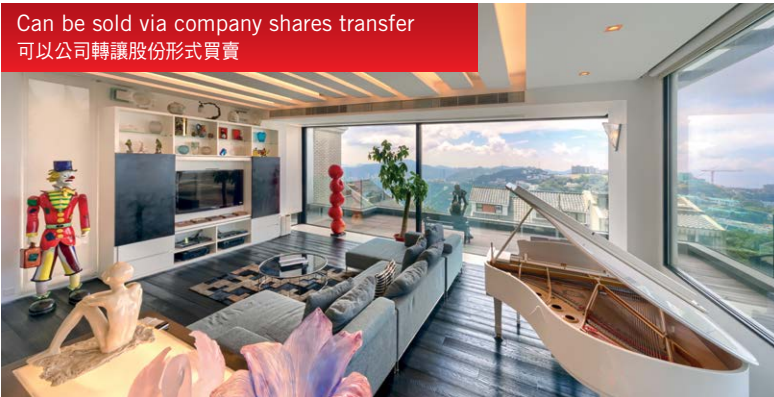
雅致裝修洋房，四套房間隔，眺望淺水灣壯麗景色

Saleable 實用 3,128 s.f.

Sale 售 Open Offer

Inquiries 查詢 6188 1398 Josephine Yuen 阮小姐

Webpage No. 網頁編號 48969

Can be sold via company shares transfer
可以公司轉讓股份形式買賣Can be sold via company shares transfer
可以公司轉讓股份形式買賣**Overthorpe**

山頂 豐林閣

24-28 Mount Austin Road

5 bed, 4 bath, 1,624 s.f. garden, 3 carparks

Harbour view townhouse with tasteful decorations above the fog line

山頂海景洋房，配以品味裝修，地段尊貴顯赫，聳立於霧線之上

Saleable 實用 2,242 s.f.

Sale 售 Open Offer

Inquiries 查詢 6188 1398 Josephine Yuen 阮小姐

**House of wood 木香雅舍**

Coral Villas, located in leafy Chung Hom Kok on Hong Kong Island's South Side, is easily accessible to the markets, shops and beaches of Stanley. This rare town house offers unobstructed and panoramic sea views, overlooking the entire Chung Hom Wan area. With a saleable area of 3,379 s.f., it comprises four ensuite bedrooms, a separate living and dining room, a private courtyard, a private 1,000 s.f. roof terrace, a maid's room and two car parks. The entire house is classically furnished with ample use of wood, including a wooden bar table, wood-decorated foyer and wooden kitchen cabinets.

珊瑚小築位於港島南區春坎角，四周被一片翠綠環抱，瞬間可達赤柱的市集、商店和海灘。這間花園洋房遙望春坎灣，坐擁無敵海景。大屋的實用面積達3,379平方呎，設有四間套房、獨立客飯廳、私家庭園、1,000平方呎的私家天台、家傭房及兩個停車位。洋房採古典式風格裝修，採用大量木材元素，包括木製酒吧區、實木偏廳及木製廚櫃。

Coral Villas 珊瑚小築

27 Horizon Drive, Chung Hom Kok

春坎角 海天徑27號

4 bed, 4 bath, 1,000 s.f. roof, 2 carparks

Saleable 實用 3,379 s.f.

Sale 售 \$175,000,000

Inquiries 查詢 9648 6082 Christine Chong 莊小姐

Webpage No. 網頁編號 35801



SALE
出售

MIDLEVELS CENTRAL & WEST
中半山及西半山



Starcrest

灣仔 星域軒

9 Star Street

2 bed, 1 bath

Practical 2-Bedroom apartment in convenient location

實用兩房單位，交通便利

Saleable 實用 762 s.f.

Sale 售 \$26,000,000

Inquiries 查詢 9028 0147 Jenson Au 區先生

Webpage No. 網頁編號 156539



Cliffview Mansions

西半山 康苑

21-25 Conduit Road

3 bed, 2 bath, 1 carpark

Tastefully decorated 3-bedroom home with spacious layout on Conduit Road

品味裝修三房住宅，間隔寬敞實用

Saleable 實用 1,680 s.f.

Sale 售 \$34,000,000

Inquiries 查詢 6517 8785 Karen Shum 沈小姐

Webpage No. 網頁編號 126981



Ewan Court 中半山 倚雲閣

54-56 Kennedy Road

3 bed, 2 bath,

529 s.f. terrace, 1 carpark

City view apartment with private terrace within walking distance to Hopewell Centre

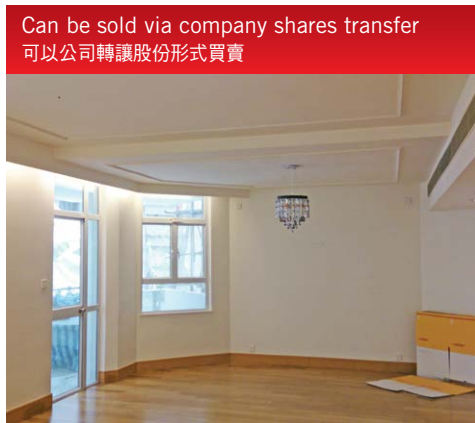
中半山城市景住宅，連私家平台，信步可達合和中心

Saleable 實用 1,213 s.f.

Sale 售 \$36,800,000

Inquiries 查詢 9662 2199 David Lau 劉先生

Webpage No. 網頁編號 95714



Tregunter Tower 1

中半山 地利根德閣 1座

14 Tregunter Path

4 bed, 2.5 bath, 1 carpark

Large 4-bedroom apartment with balcony and full clubhouse facilities at Midlevels Central

偌大四房住宅連露台，享完善會所設施，可租可售

Saleable 實用 2,330 s.f.

Sale 售 \$53,800,000 (Lease 租 \$88,000)

Inquiries 查詢 9803 2216 Annie Lee 李小姐

Webpage No. 網頁編號 49065



Tavistock 2

中半山 騰皇居2座

10A Tregunter Path

3 bed, 2 bath

Popular 3-bedroom apartment with facilities and open city view

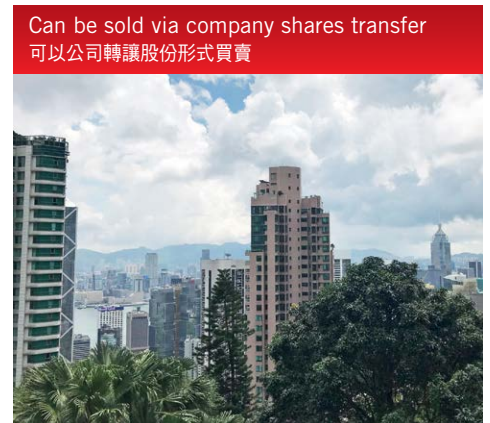
受歡迎三房住宅，連設施，享開揚城市景

Saleable 實用 1,520 s.f.

Sale 售 \$68,000,000

Inquiries 查詢 9319 0605 May Lee 李小姐

Webpage No. 網頁編號 63790



Rose Gardens

中半山 玫瑰別墅

9 Magazine Gap Road

3 bed, 2 bath, 1 carpark

High-efficiency 3-bedroom apartment with balcony in prestigious location

高實用率三房住宅，連露台，地段尊貴顯赫

Saleable 實用 2,235 s.f.

Sale 售 \$76,000,000

Inquiries 查詢 9011 5499 Yuky Chung 鍾小姐

Webpage No. 網頁編號 125468



Can be sold via company shares transfer
可以公司轉讓股份形式買賣



Tregunter Tower 2

中半山 地利根德閣 2座

14 Tregunter Path

4 bed, 2.5 bath, 1 carpark

Practical family home with full facilities at well-known estate

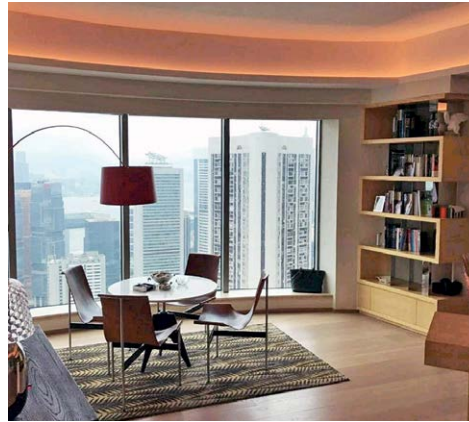
實用家庭式住宅，連完善設施，位處尊貴名廈，可租可售

Saleable 實用 2,330 s.f.

Sale 售 \$86,250,000 (Lease 租 \$100,000)

Inquiries 查詢 9319 0605 May Lee 李小姐

Webpage No. 網頁編號 99217



Regence Royale

中半山 富匯豪庭

2 Bowen Road

4 bed, 2 bath

Prestigious 4-bedroom apartment at prime location with city view

尊貴四房住宅，地段優越，享城市美景

Saleable 實用 1,805 s.f.

Sale 售 \$93,000,000

Inquiries 查詢 9093 3381 Stephen Chan 陳先生

Webpage No. 網頁編號 157376



Can be sold via company shares transfer
可以公司轉讓股份形式買賣



Regent On The Park

中半山 御花園

9A Kennedy Road

3 bed, 2.5 bath, 2 carparks

Rarely available duplex unit with open city view at prime location

罕有複式住宅，享開揚城市景，地段優越，可租可售

Saleable 實用 2,187 s.f.

Sale 售 \$98,800,000 (Lease 租 \$130,000)

Inquiries 查詢 9093 3381 Stephen Chan 陳先生

Webpage No. 網頁編號 1680



Hatton House

西半山 赫頓大廈

15 Kotewall Road

3 bed, 3 bath, 2 carparks

Nicely decorated 3-ensuite apartment with private garden in prime location

雅致三套房住宅，連私家花園，地段優越

Saleable 實用 2,324 s.f.

Sale 售 \$98,000,000

Inquiries 查詢 9662 2199 David Lau 劉先生

Can be sold via company shares transfer
可以公司轉讓股份形式買賣



May Tower 2

中半山 梅苑二座

5 May Road

4 bed, 4 bath, 1 carpark

Unique full floor harbour view apartment with facilities in prime location

獨特全層海景住宅，連設施，地段優越，可租可售

Saleable 實用 2,669 s.f.

Sale 售 \$150,000,000 (Lease 租 \$150,000)

Inquiries 查詢 9803 2216 Annie Lee 李小姐

Webpage No. 網頁編號 1613



The Mayfair

中半山 梅道1號

1 May Road

2 bed, 3 bath, 1 carpark

Luxurious home with enlarged master bedroom in prestigious development

中半山奢華住宅，主人睡房偌大寬敞，位處尊貴住宅項目，可租可售

Saleable 實用 2,192 s.f.

Sale 售 \$150,000,000 (Lease 租 \$160,000)

Inquiries 查詢 9011 5499 Yuky Chung 鍾小姐

Webpage No. 網頁編號 31145



Convention Plaza Duplex

灣仔 會景閣複式

1 Harbour Road

4 bed, 3 bath

One of a kind duplex with tasteful decorations and stunning city view, close to future MTR Shatin to Central Link
品味裝修獨特複式住宅，飽覽城市美景，毗鄰未來港鐵沙中線

Saleable 實用 2,794 s.f.

Sale 售 \$138,000,000

Inquiries 查詢 6188 1398 Josephine Yuen 阮小姐

Webpage No. 網頁編號 49762



Can be sold via company shares transfer
可以公司轉讓股份形式買賣

SOLE AGENT



The Rednaxela

西半山 帝華臺

1 Rednaxela Terrace

3 bed, 3 bath, 114 s.f. terrace, 1 carpark

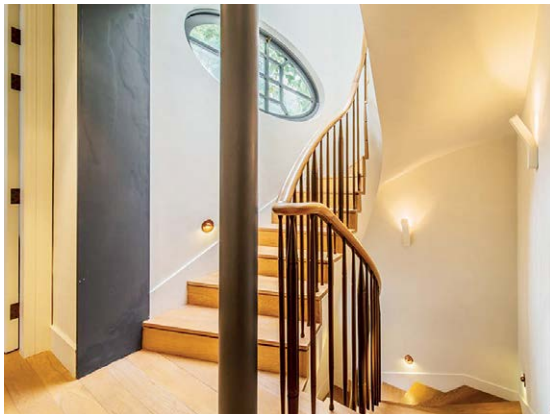
Well decorated penthouse duplex in prime location
優質裝修頂層複式單位，地段優越，可租可售

Saleable 實用 1,794 s.f.

Sale 售 Open Offer (Lease 租 \$110,000 incl.)

Inquiries 查詢 9319 0605 May Lee 李小姐

Webpage No. 網頁編號 135276



The highest level of luxury 奢華之巔

Situated in one of the most prestigious neighbourhoods where old families and influential businessmen dwell, this massive detached house on a single lot in Jardine's Lookout is probably one of the most luxurious residences in Asia. This four-storey detached house offers 4,969 s.f. of living spaces and an additional 3,000 s.f. of outdoor area (garden, roof and terraces with two covered garage).

The family and formal living rooms are on the ground floor while the bedrooms occupy the upper levels – a private staircase directly links the master suite to the rooftop terrace fitted with a spa pool. The vast basement houses the kitchen, utility area, two maid's rooms plus a huge dining room. In addition, the stone-clad garden features a 10m heated swimming pool and outdoor speakers... perfect for entertaining guests!

渣甸山這間獨立地段的獨立屋坐落城中其中一個最顯赫的高尚住宅區，與名門望族及有影響力的實業家為鄰，可說是亞洲區內數一數二的奢華大宅。四層高獨立屋的室內面積4,969平方呎，更有額外3,000平方呎的戶外空間（包括花園、天台、平台及兩個有蓋車位）。

家庭偏廳及主客廳設於地面層，上面數層則是臥室，主人套房更有私人樓梯直達設有按摩池的屋頂平台。地庫空間偌大，設廚房、工作間、兩間家傭房及大飯廳。而且，鋪上石地板的花園有10米恆溫泳池及戶外音響，是宴客的不二之選。

Jardine's Lookout 渣甸山

Saleable 實用 4,969 s.f.

Sale 售 Open Offer

Inquiries 查詢 9871 6828 Louis Wong 黃先生

Scenic Garden

西半山 福苑

9 Kotewall Road

3 bed, 2 bath, 201 s.f. terrace, 1 carpark

Highly sought after 3-bedroom flat with harbour view and sky terrace

受歡迎三房住宅，坐擁維港美景及空中平台花園

Saleable 實用 1,087 s.f.

Sale 售 \$36,000,000

Inquiries 查詢 6517 8785 Karen Shum 沈小姐

Webpage No. 網頁編號 39291



Robinson Garden Apartment

西半山 羅便臣道花園大廈

3-3G Robinson Road

3 bed, 2 bath, 1 carpark

Spacious 3-bedroom apartment with open city view and green view
寬敞三房單位，享開揚城市景及翠綠景，可租可售

Saleable 實用 1,587 s.f.

Sale 售 \$36,000,000 (Lease 租 \$60,000)

Inquiries 查詢 6517 8785 Karen Shum 沈小姐

Webpage No. 網頁編號 144415



Seafront delight 蔚藍海岸

Situated in the tranquil setting of Redhill Peninsula, this lavish 2,876 s.f. (saleable area) townhouse offers glorious sea and mountain views, as well as four bedrooms (two ensuite), three-and-a-half bathrooms, a separate living and dining room, a family room, a balcony, a maid's room, a utility room and a garage with three car parks.

One of the greatest attractions is the lush private garden, where residents can host outdoor parties and gatherings. Kitchen is also fully-fitted and equipped. The townhouse is in move-in condition.

位於寧靜的紅山半島，這座寬敞洋房實用面積廣達2,876平方呎，坐享優美海景及山巒景。洋房設四間睡房(兩間套房)、三間半浴室、分層客廳廳、家庭廳、露台、家傭房、多用途房及可容納三輛車的車庫。

其中最引人入勝的賣點是鬱鬱蔥蔥的私家花園，住戶可舉辦戶外派對及聚會，盡享奢閒之樂。廚房設備亦相當齊全。洋房裝修簇新，可即時入住。

The Redhill Peninsula

紅山半島

18 Pak Pat Shan Road, Tai Tam

大潭 白筆山道18號

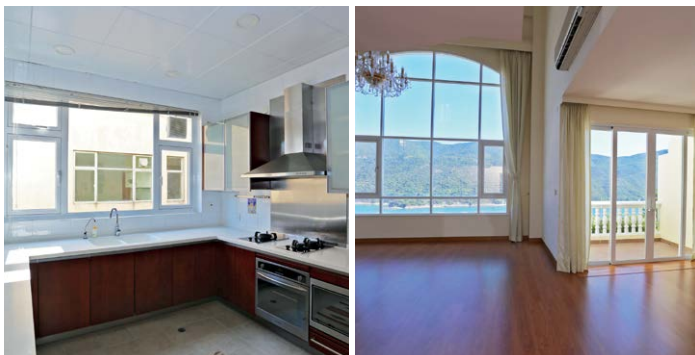
4 bed, 3.5 bath, 2,002 s.f. garden, 1 garage (3 carparks)

Saleable 實用 2,876 s.f.

Rent 租 \$138,000 incl. (有匙引看)

Inquiries 查詢 6188 1398 Josephine Yuen 阮小姐

Webpage No. 網頁編號 187638





Champion Court

跑馬地 金鞍大廈

67-69 Wong Nai Chung Road

3 bed, 2 bath, 876 s.f. terrace

Racecourse view 3-bedroom apartment with private terrace with easy access to Causeway Bay 三房馬場景住宅，連私家平台，毗鄰銅鑼灣，可租可售

Saleable 實用 970 s.f.

Sale 售 \$29,500,000 (Lease 租 \$72,000)

Inquiries 查詢 9026 2912 Michelle Chung 鍾小姐

Webpage No. 網頁編號 104243



Villa Lotto

跑馬地 樂陶苑

18 Broadwood Road

3 bed, 2 bath

Practical 3-bedroom flat with bird's eye view of Hong Kong Stadium

實用三房住宅，鳥瞰香港大球場美景

Saleable 實用 1,103 s.f.

Sale 售 \$31,000,000

Inquiries 查詢 9028 0147 Jenson Au 區先生

Webpage No. 網頁編號 48684



Wan Chui Yuen

東半山 環翠園

325-331 Tai Hang Road

3 bed, 2 bath, 1 carpark

High efficiency 3-bedroom apartment with balcony in convenient location

高實用率三房單位，連露台，交通便利

Saleable 實用 1,564 s.f.

Sale 售 \$34,800,000

Inquiries 查詢 9662 2199 David Lau 劉先生

Webpage No. 網頁編號 48684



Wing On Tower

渣甸山 永安閣

7-9 Boyce Road

3 bed, 2 bath, 1 carpark

Spacious practical 3-bedroom flat at quiet upscale neighbourhood 寬敞實用三房單位，地段顯赫，清幽恬靜

Saleable 實用 1,260 s.f.

Sale 售 \$36,000,000

Inquiries 查詢 9028 0147 Jenson Au 區先生

Webpage No. 網頁編號 114923



Winfield Building

跑馬地 雲暉大廈

1-5 Ventris Road

3 bed, 2 bath, 1 carpark

Spacious 3-bedroom apartment with balcony and comprehensive facilities in Happy Valley 寬敞三房單位，連露台及完善設施

Saleable 實用 1,567 s.f.

Sale 售 \$60,000,000

Inquiries 查詢 9028 0147 Jenson Au 區先生

Webpage No. 網頁編號 165494



Broadwood Park

東半山 柏樂苑

38 Broadwood Road

3 bed, 3 bath, 2 carparks

Tastefully decorated apartment in tranquil location with harbour view

品味裝修住宅，地段寧靜，坐擁優美海景

Saleable 實用 2,414 s.f.

Sale 售 \$95,000,000

Inquiries 查詢 9093 3381 Stephen Chan 陳先生

Webpage No. 網頁編號 34728



Serenade

東半山 上林

11 Tai Hang Road

3 bed, 3.5 bath, 1 carpark

3-bedroom luxurious duplex apartment at prime location enjoys Victoria Harbour view

三房豪華複式單位，地段優越，眺望維港美景，可租可售

Saleable 實用 1,991 s.f.

Sale 售 \$100,000,000 (Lease 租 \$120,000)

Inquiries 查詢 9093 3381 Stephen Chan 陳先生

Webpage No. 網頁編號 165877



Can be sold via company shares transfer
可以公司轉讓股份形式買賣



Jardine's Lookout Garden Houses

渣甸山 渣甸山花園

21-49 Moorsom Road

5 bed, 5.5 bath, 366 s.f. terrace, 1 garage

Tastefully decorated and fully furnished garden townhouse in sought after neighbourhood

品味裝修花園洋房，位處受歡迎地段

Saleable 實用 1,716 s.f.

Sale 售 \$128,000,000

Inquiries 查詢 9803 2216 Annie Lee 李小姐

Webpage No. 網頁編號 160623



Woodland Heights

東半山 怡園

2A-2F Wong Nai Chung Gap Road

4 bed, 2.5 bath, 1 carpark

Spacious 4-bedroom duplex at prime location enjoys picturesque city view

寬敞四房複式單位，地段優越，享遼闊城市景

Saleable 實用 3,189 s.f.

Sale 售 \$135,000,000

Inquiries 查詢 9093 3381 Stephen Chan 陳先生

Webpage No. 網頁編號 161475



The Hampton

跑馬地 藍塘道45號

45 Blue Pool Road

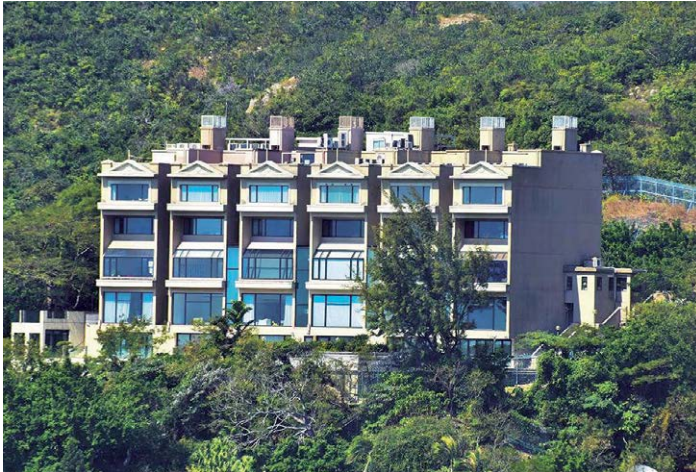
5 bed, 4.5 bath, 2 carparks

Designer decorated fully furnished large apartment on fringe of CBD
設計師裝修大住宅，毗鄰商業中心區

Saleable 實用 2,781 s.f.

Sale 售 \$140,000,000

Inquiries 查詢 9871 6828 Louis Wong 黃先生



Where sea & sky meet 海天一色

Situated in the peaceful neighbourhood of Deep Water Bay, this 2,742 s.f. (saleable area) modern townhouse offers striking sea views that stretch over Deep Water Bay and across the horizon of the South China Sea.

Decorated with contemporary décor, the townhouse comprises four ensuite bedrooms, a separate living and dining room, 4.5 bathrooms, a family room, a maid room, a utility room and two covered car parks. The terrace and roof are ideal spots for mingling or sunbathing, offering complete privacy.

這實用面積2,742平方呎的豪華時尚洋房位於寧靜怡人的深水灣，坐享深水灣優美海景，遠眺南中國海的海平線。

洋房擁當代時尚風格的設計風格，提供四間套房、獨立的客飯廳，四間半浴室，一個家庭廳，一間家傭房，一間多用途房及兩個有蓋車位。平台及天台是享受室外日光浴及與親朋好友相聚的理想地點，洋房亦享高私隱度。

House F, 66 Deep Water Bay Road

深水灣道66號洋房F

4 bed, 4.5 bath, 569 s.f. roof, 2 car parks

Saleable 實用 2,742 s.f.

Rent 租 \$273,000 excl.

Inquiries 查詢 9871 6828 Louis Wong 黃先生

Webpage No. 網頁編號 10204



Classic abode 古雅風尚

Nestled in a quiet enclave off Tai Hang Road in Mid-Levels East, this spacious apartment in Fontana Gardens lies within walking distance to Causeway Bay. Surrounded by lush greenery, the flat spans a saleable area of 2,560 s.f. with a high efficiency rate of 85% and consists of four bedrooms with one being ensuite, a combined living and dining room, a large balcony, two bathrooms, an utility room and a maid's room. The apartment is fitted with basic classical style furnishing with a sizable kitchen.

豪園位於東半山坑道的清幽地段，徒步往銅鑼灣僅咫尺之遙。這間偌大單位被綠樹環抱，實用面積達2,560平方呎，實用率高達85%，單位設有四間睡房，其中一間為套房、相連的客飯廳、寬闊露台、兩間浴室、一間多用途室及一間家傭房。單位採古典裝潢，散發古雅情懷，連實用廚房，空間十足。

Can be sold via company shares transfer
可以公司轉讓股份形式買賣

Fontana Gardens 豪園

1-25 Ka Ning Path, Midlevels East 東半山 嘉寧徑1-25號

4 bed, 2 bath, 1 carpark

Saleable 實用 2,560 s.f.

Sale 售 \$74,000,000

Inquiries 查詢 9803 2216 Annie Lee 李小姐

Webpage No. 網頁編號 46004



Interior design
constructions
space planning
project management
tendering
landscaping
quantity survey



Shine a light

by Dennis Lee

Today's lighting solutions are all about setting the right mood for a space. These elaborate decorative lighting fixtures bring a warm ambience and intimacy to the home



TUNTO DESIGN SWAN

Finnish brand Tunto Design creates lighting concepts that combine sustainable wooden materials with the latest technological innovations. Available in walnut, oak and birch, the dimmable Swan pendant combines functionality with a smooth and curvy design, exuding the natural warmth of wood and a streamlined elegance for interiors as well as outdoor spaces.

tunto.com



RESIDENT CIRCUS

Inspired by jewellery stands, the Circus floor light is a system of interlinked rings arranged in sequence to create striking vertical decoration. Designed by Resident Studio and handmade in New Zealand, each brass ring projects a diffused warm LED source outwards around a 360° plane, thanks to its plug-and-play system that allows for power sharing between rings. Ideal for commercial and residential environments, it also comes in a ceiling-light version. Available through Archetypal.

2320 0580
archetypal.hk



MOOOI MESHMATICS

Inspired by humble wire netting, Dutch product designer Rick Tegelaar developed a machine and a set of tools to model it with accuracy. The result is the playful Meshmatics, a three-layer ceiling lamp for Moooi with an ingenious thin wire-mesh structure that creates shimmering reflections and diffuses the light of the integrated LED to cast an elaborate net of shadows onto the ceiling.

moooi.com



TOM DIXON TOP

Conical stainless-steel pendant light Top, from Tom Dixon, appears solid when not in use, but emanates a fine filter of warm light through its acid-etched, micro pierced polished silver surface when switched on – taking its cue from a coffee filter. The lamp is designed to be hung in many combinations; as a linear pendant system or as a chandelier with a series of ethereal glowing satellites.

2882 2068
tomdixon.net

BROKIS CAPSULA

Designed by Lucie Koldová, the Capsula pendant by Brokis has a tubular triplex-glass LED light source, a coloured inner shade and translucent external shell, all overlapping to create 3D optical effects and highlighting the Czech brand's Bohemian glassmaking technology. With the dual suspension straps allowing variation in positioning, the light can be installed individually or in sets.

Available through
Lane Crawford.
2118 3002
lanecrawford.com



ACORN STUDIO LUNA

This water-repellent, heat-resistant spherical lamp is fashioned after the moon. Designed and handmade by Taipei-based Acorn Studio, it is subtle and non-intrusive during the day and glows warmly by night, lending a note of magic to interiors or exteriors. Available in five sizes, they are made to order.

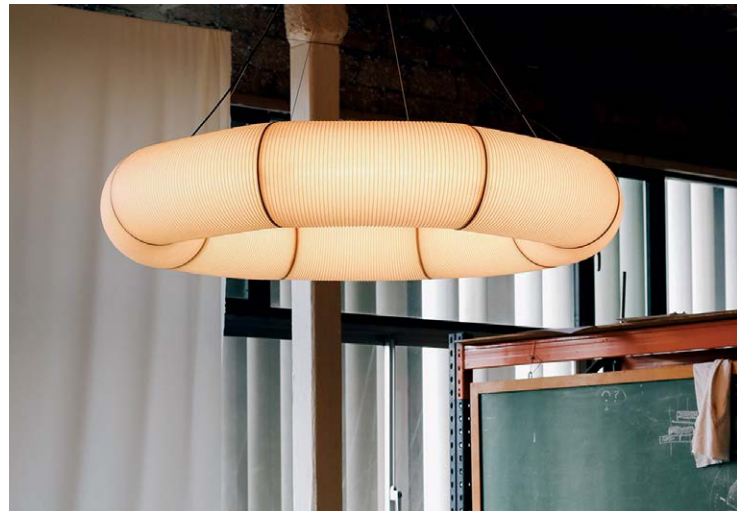
acorn.space



STUDIO ITALIA DESIGN VALENTINA

Designed by Andrea Tosetto, the Valentina table lamp is established Italian lighting firm Studio Italia Design's first smart lighting fixture. With a metallic, shining body and crystal-like shade made of methyl methacrylate (PMMA), the luminous reflections generated by the prismatic diffuser create wonderful plays of light. A gentle tap on the top of the shade allows dimming and a change of colour temperature of the LED light of this portable and rechargeable lamp. Available through Zodiac Lighting.

2898 9023
zodiaclighting.com



SANTA & COLE TEKIO

Tekio ('adaptation' in Japanese) by Spanish brand Santa & Cole is a LED system with paper-covered modules. Designer Anthony Dickens took inspiration from traditional Japanese paper lanterns, combining Japanese craftsmanship and traditional manufacturing processes.

Using a magnet system, modules can be configured into different shapes to create wall lamps, vertical pendant lamps, horizontal lines and circles.

santacole.com

ARCHITECTURE | DESIGN | PEOPLE PERSPECTIVE

For more information about interior and design inspiration, don't miss the July/August issue of *Perspective* magazine and check out our website at www.perspectiveglobal.com





The Somerset

淺水灣 怡峰

67 Repulse Bay Road

3 bed, 2 bath, 1 carpark

Unique 3-bedroom duplex apartment with fantastic sea view

獨特三房複式住宅，眺望迷人海景

Saleable 實用 1,985 s.f.

Rent 租 \$120,000 incl.

Inquiries 查詢 9011 5499 Yuky Chung 鍾小姐

Webpage No. 網頁編號 123934



Manderly Garden

深水灣 文禮苑

48 Deep Water Bay Road

3 bed, 3.5 bath,

691 s.f. roof, 2 carparks

Well decorated 3-ensuite townhouse in tranquil neighbourhood

優質裝修三套房洋房，地段寧靜

Saleable 實用 3,200 s.f.

Rent 租 \$200,000 incl.

Inquiries 查詢 9026 2912 Michelle Chung 鍾小姐

Webpage No. 網頁編號 186550



Stanley Crest 赤柱 赤柱灘道5號

5 Stanley Beach Road

4 bed, 4 bath,

1,356 s.f. garden, 2 carparks

Majestic 4-bedroom townhouse with ample alfresco space overlooking picturesque view

恢宏四房洋房，戶外空間充裕，俯瞰如畫美景，可租可售

Saleable 實用 2,836 s.f.

Rent 租 \$220,000 incl. (Sale 售 \$180,000,000)

Inquiries 查詢 9011 5499 Yuky Chung 鍾小姐

Webpage No. 網頁編號 123699



Mount Austin Estate

山頂 山景花園別墅

5 Mount Austin Road

4 bed, 3 bath,

1,800 s.f. garden, 1 carpark

Exclusive 4-bedroom garden townhouse on The Peak enjoys tranquil settings

四房花園洋房，矜罕尊貴，環境寧謐

Saleable 實用 2,724 s.f.

Rent 租 \$228,000 incl.

Inquiries 查詢 9011 5499 Yuky Chung 鍾小姐

Webpage No. 網頁編號 18161



Magnolia Villas

薄扶林 百合苑

46 Sassoon Road

4 bed, 3.5 bath, 1 garage

Sea view 4-bedroom townhouse with private terrace and private pool in tranquil location

海景四房洋房，連私家平台及私家游泳池，地段清幽

Saleable 實用 4,440 s.f.

Rent 租 \$250,000 excl.

Inquiries 查詢 9648 6082 Christine Chong 莊小姐

Webpage No. 網頁編號 14761



Interocean Court

山頂 山頂道26號

26 Peak Road

5 bed, 3 bath, 1 carpark

Huge 5-bedroom harbour view apartment in prestigious location

偌大五房海景單位，地段尊貴顯赫

Saleable 實用 2,665 s.f.

Rent 租 \$295,000 incl.

Inquiries 查詢 9026 2912 Michelle Chung 鍾小姐

Webpage No. 網頁編號 21590



Altadena

山頂 白加道27號

27 Barker Road

4 bed, 4.5 bath, 2 carparks

Prestigious 4-bedroom duplex with balcony enjoying fantastic Victoria Harbour view

尊貴四套房複式單位，連露台，享醉人維港美景

Saleable 實用 4,073 s.f.

Rent 租 \$330,000 incl.

Inquiries 查詢 9662 2199 David Lau 劉先生

Webpage No. 網頁編號 12838



Las Pinadas

壽臣山 朗松居

33 Shouson Hill Road

4 bed, 3.5 bath, 1,062 s.f. roof, 2 carparks

Prestigious 4-bedroom townhouse overlooking mountain view in Shouson Hill

尊貴四房洋房，眺望山巒美景

Saleable 實用 4,041 s.f.

Rent 租 \$330,000 incl.

Inquiries 查詢 9028 0147 Jenson Au 區先生

Webpage No. 網頁編號 9517



Island Road

深水灣 香島道

5 bed, 5 bath, 2 carparks

Deluxe waterfront house with large terrace in Deep Water Bay

深水灣豪華海濱洋房，連偌大露台

Saleable 實用 3,449 s.f.

Rent 租 \$400,000 incl.

Inquiries 查詢 9026 2912 Michelle Chung 鍾小姐

Webpage No. 網頁編號 13666



Deep Water Bay Road

深水灣道

4 bed, 3.5 bath, 2 carparks

Newly renovated garden house in prestigious address

全新裝修花園，地段顯赫尊貴

Saleable 實用 2,838 s.f.

Rent 租 Open Offer

Inquiries 查詢 9871 6828 Louis Wong 黃先生

Webpage No. 網頁編號 14722



Po Garden

中半山 寶園

9 Brewin Path

4 bed, 2 bath, 1 carpark

Bright and airy 4-bedroom flat at exclusive location close to CBD

光猛通風四房單位，地段尊貴顯赫，毗鄰商業中心區

Saleable 實用 1,942 s.f.

Rent 租 \$110,000 incl.

Inquiries 查詢 9319 0605 May Lee 李小姐

Webpage No. 網頁編號 181903



May Tower 2

中半山 梅苑二座

5 May Road

3 bed, 3.5 bath, 1 carpark

Nicely furnished and fitted 3-ensuite large apartment in prestigious development

雅致裝修三套房偌大單位，位處尊貴住宅項目

Saleable 實用 2,669 s.f.

Rent 租 \$160,000 incl.

Inquiries 查詢 9803 2216 Annie Lee 李小姐

Webpage No. 網頁編號 33377



Grenville House

中半山 嘉慧園

1 & 3 Magazine Gap Road

4 bed, 3 bath, 1 carpark

Newly renovated 4-bedroom apartment with 2 ensuites and huge balcony

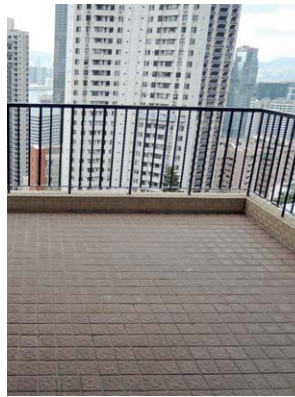
全新裝修四房單位，連兩套房及偌大露台

Saleable 實用 3,349 s.f.

Rent 租 \$180,000 incl.

Inquiries 查詢 9662 2199 David Lau 劉先生

Webpage No. 網頁編號 35553



Harmony

東半山 逸園

44 Stubbs Road

5 bed, 5 bath, 1,147 s.f. roof, 2 carparks

Brand new harbour view 5-ensuite penthouse with private roof terrace

全新裝修海景頂層單位，五套房間隔，連私家天台

Saleable 實用 3,130 s.f.

Rent 租 \$450,000 excl.

Inquiries 查詢 9662 2199 David Lau 劉先生

Webpage No. 網頁編號 186322





中環核心唯一全層 全新私隱出售

繁華之美 彌足珍貴

中環罕有全新商業大廈
些利街2-4號

✓ **昂然進駐 中環核心 獨立樓層**

坐落中環至半自動扶手電梯旁，
5分鐘步行直達中環港鐵站

✓ **潛力無限**

多個大型綜合發展項目，信步核心地標中環中心

全層 2,327-2,351' 平方呎 (G)*
平均每呎只售 HK\$30,000 餘元

落成年份: 預計2018年第三季

*未核實



● 全新華麗優雅大堂 同區最優質多用途核心商廈

座落中環主要幹道

得天獨厚三鐵交匯，佔據大都會核心優勢

商業地屢創新高

- 聚焦極罕中環CBD 全層私密，承重高達5kpa.
- 全新華麗優雅大堂 同區最優質多用途核心商廈
- 區內供應持續短缺 天價商業地王見證世紀時代
- 全層享極高私隱度 高消費群集中盡佔都會脉搏
- 單位間格四正無柱 分體冷氣獨立洗手間來去水



Inquiries:

Mr. Lai

+852 9484 5501

Acacia Villa

大嶼山 長沙上村60號

60 Cheung Sha Sheung Tsuen

3 bed, 2.5 bath, 1 garage

Nicely decorated 3-bedroom garden townhouse in tranquil location, high development potentials in south of Lantau Island

雅致裝修花園洋房，三房間隔，地段清幽恬靜，南大嶼山發展潛力高

Saleable 實用 1,051 s.f.

Sale 售 \$18,500,000

Inquiries 查詢 9319 0605 May Lee 李小姐



Island Crest

堅尼地城 繙城峰

8 First Street

5 bed, 4.5 bath, 1,936 s.f. roof, 1 carpark

Rare penthouse apartment with roof terrace and private swimming pool overlooking stunning harbour view

罕有頂層單位連天台，享私家游泳池，俯瞰壯麗海景

Saleable 實用 2,184 s.f.

Sale 售 \$188,000,000

Inquiries 查詢 9319 0605 May Lee 李小姐

Webpage No. 網頁編號 129147



Stunning Bordeaux Chateau 瑰麗莊嚴的別墅城堡

A stunning private estate located in the rural beauty just outside the wine capital of the world, Bordeaux. The original chateau was built in 1545, then fully renovated in 1992 and well maintained by the current owners with further investment and improvements.

The property offers approximately 700m2 of habitable space set within a stunning park of 1.7ha. A swimming pool, ornamental pond, orchard, kitchen garden, mature trees and beautiful outbuildings surround this stately historic chateau near Bordeaux.

這壯麗的私人莊園坐落於世界葡萄酒之都波爾多的鄉郊地區，環境優美。原城堡建於1545年，於1992年進行了全面的更新復修，經現有業主悉心保養維護。

物業坐落於1.7公頃的廣闊花園內，居住空間廣達700平方米。這座莊嚴而歷史悠久的城堡設游泳池、觀賞池塘、果園及廚房花園。附近有茂密的樹木和美麗的附屬建築。

Bordeaux, France

法國 波爾多

Sale 售 €2,650,000 (2,650,000歐元)

Inquiries 查詢 6323 7577 Kennis Lee 李小姐

2152 4888 KS Koh 許先生

Reference No. 編號 3830712



AP Thailand 年度項目 Life Ladprao Valley



呎價由港幣**3,100**起
首期**15萬**起

- Ladprao 區發展完善, 項目緊貼大型購物商場 Central Plaza Ladprao, Union Mall, Tesco Lotus 超級市場
- 位於兩鐵交匯, 舉步即達綠線 BTS Ha Yak Ladprao* 站及MRT Phahon Yothin 站
- 秉承AP優質用料, 開則方正實用, 設計靈活多變, 配以豪華會所
- 提供開放式、1至2房單位, 面積由309 -715 呎
- 永久業權, 預計 2021年9月落成



歡迎查詢:

+852 9010 7621

projects@landscape.com



LANDSCOPE
INTERNATIONAL

領域國際地產有限公司

在此廣告的所有資料包括文字、相片、影像、圖則、圖表、意見及一切敘述只供參考及私人使用。領域國際地產有限公司、領域佳士得國際地產、領域房地產顧問有限公司及領域測量師行有限公司(以下統稱領域)及物業發展商並不擔保及負責資料之準確性、正確性及完整性, 本廣告所提供之物業叫價以最後合約為準, 並不排除有任何更改、遺漏、期限前預售和預租、價格或租務條款之改變又或取消放盤等等, 上述情況一概恕不提前通知, 所有資料只供參考, 並不構成亦不能被視為任何合約的全部或部份。領域持有地產代理監管局發出之牌照及受<地產代理條例>規管。我們的海外銷售人員祇代理香港以外之物業(除非另有明文註明), 故不受<地產代理條例>規管。購買境外未建成物業是複雜及有風險的, 在作出購買決定前, 買方應仔細閱讀所有相關的資料及文件, 如有疑問, 請在作出購買前尋求獨立專業意見。 *BTS Ha Yak Ladprao站預計於2020年落成
項目之EIA(環境影響評估)處於申請過程中 領域(C-062104)持有地產代理監管局發出之牌照及受其規管

En Bloc Office building in Prime Southwark

- Newly constructed iconic contemporary office building, designed by Stirling Prize winner
- 5 mins and 6 mins walk to BOROUGH and SOUTHWARK Tube station respectively
- Comprises ground and three upper floors
- Total current rent of £1,173,367.50 p.a., providing an excellent opportunity for future rental growth
- 全新地標式當代時尚辦公大廈，由奪史特靈獎的得獎建築師所設計
- 大廈共四層，距離BOROUGH及SOUTHWARK站分別5分鐘及6分鐘
- 年租金總收入1,173,367.50英鎊，租金回報優厚



Freehold Title
Net Initial Yield of 19,437 sq ft
NIY of 4.75%
Guide Price £23.1M
5662 8660 Sabella Poon 潘小姐

Prominent En-bloc office building in the affluent Belgravia

- 2 minutes' walk from Victoria station near the affluent Belgravia
- Benefitted from constrained office supply in Victoria and Belgravia
- Huge growth potential with numbers of new projects and improvement works near Victoria Station
- 距離維多利亞車站僅2分鐘步程，鄰近富裕的貝爾格拉維亞
- 受惠於維多利亞和貝爾格拉維亞緊張的寫字樓供應
- 維多利亞車站周邊有多項大型基建和重建項目



Net Initial Yield: 5.00%
Guide Price £17.6M
£1,040 psf
6215 1618
Kelvin Wong 黃先生

Prime en bloc retail/residential mixed use investment in Chelsea

- Subject en bloc mixed use retail/residential investment is within close proximity to Natural History Museum and Fulham Road close to South Kensington underground station
- Ground and basement let to Michelin starred restaurant with 10 years to expiry, 3 bed self contained residential unit on 1/F to 3/F
- Current passing rent is £255,500 p.a.
- 毗鄰Natural History Museum及Fulham Road的零售商舖及住宅大廈
- 首層及地庫由米芝蓮星級餐廳承租，更擁10年的租約，一樓至三樓則是三房住宅單位
- 年租金收入255,500英鎊



GIA of 5,281 s.f.
Net Initial Yield 2.99% (overall)
Guide Price £8M
5326 3344
Timothy Chan 陳先生

En Bloc mixed use investment in the Royal Borough of Kensington and Chelsea

- Adjacent to HSBC Bank and opposite High Street Kensington Underground Station
- Retail element basement and ground floor are single let with 20 year lease from Jan 2018
- Upper floors with four residential flats were fully let
- Total Passing rent is £380,186 p.a.
- 物業毗鄰匯豐銀行及面對High Street Kensington站
- 地庫及首層是零售商舖，由2018年1月起擁20年長約
- 上層是四個住宅單位，現已租出
- 年租金收入380,186英鎊



Freehold Title
Net Initial Yield of 6,560 sq ft
NIY of 3.75%
Guide Price £12.5M
5662 8660
Sabella Poon 潘小姐

High Yield Undervalued En-Bloc Investment with Secure Income

- Strong and very secure tenants, mostly rated 5A 1 by D&B
- Office portion single-let to government
- Prime high-street location
- 33 minutes to Manchester Piccadilly
- 優質和具保證的租戶組合，大部分被鄧白氏評級為5A 1
- 寫字樓部分由英國政府單一承租
- 一線零售街道
- 33分鐘直達曼城



Net Initial Yield: 7.83%
Guide Price £9.8M
£88 psf
6215 1618
Kelvin Wong 黃先生

Rare High Yield office investment

- Spacious are with over 68,000 sq ft spread over three stories
- Located at wealth area of Fulham
- 三層68,000平方呎辦公室，寬敞偌大
- 位處Fulham富裕繁華區



Net Initial Yield of 6.7%
Guide Price £43.5M
5326 3344
Timothy Chan 陳先生



FOUR SEASONS
PRIVATE RESIDENCES
BANGKOK AT CHAO PHRAYA RIVER
 A COUNTRY GROUP DEVELOPMENT

**WATERFRONT LIVING
 AT ITS FINEST**

FOUR SEASONS PRIVATE RESIDENCES BANGKOK AT CHAO PHRAYA RIVER

- Asia's first waterfront Four Seasons Private Residences and the largest Four Seasons Private Residences in the world
- Managed and operated by legendary Four Seasons service
- One-of-a-kind geometric design, featuring all-corner units across all 355 ultra-luxury residences
- Situated on the last remaining waterfront golden site in Bangkok's CBD



HONG KONG EXHIBITION

1-2 SEPTEMBER 2018 (11AM - 7PM)

FOUR SEASONS HOTEL, Victoria Room 1 (Level 2)
 8 Finance St, Central, Hongkong

FOR MORE INFORMATION :

Tel: 9010 7621 | projects@landscape-christies.com

The information, text and photos contained herein are provided solely for the convenience of interested parties and no warranty or representation as to their accuracy, correctness or completeness is made by Landscape International Properties Ltd, Landscape Christie's International Real Estate, Landscape Realty Ltd, Landscape Surveyors Ltd, (collectively "Landscape") or the sellers, none of whom shall have any liability or obligation with respect thereto. These offerings are made subject to contract, correction of errors, omissions, prior sale, change of price or terms or withdrawal from the market without notice. Information provided is for reference only and does not constitute all or any part of a contract.

Landscape is licensed under the Estate Agents Ordinance and is regulated by the Estate Agents Authority (EAA). Our sales representative for overseas property work exclusively in relation to properties outside Hong Kong and unless expressly stated otherwise, are not licensed under the Estate Agents Ordinance to deal with Hong Kong properties. Purchasing uncompleted properties situated outside Hong Kong is complicated and carries risk. Buyer(s) should review all relevant information and documents carefully before making a purchase decision. If in doubt, please seek independent professional advice before making a purchase decision.

Landscape Christie's (C-018733) is licensed and regulated by EAA.



Developer



Marketing Agent

Much sought after retail bldg located right on Oxford Street

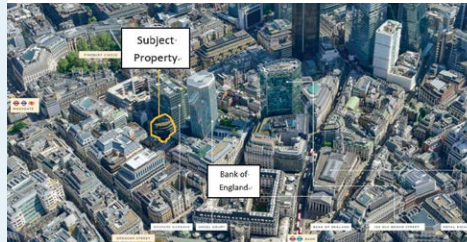
- Located in probably the busiest section of the famous bustling Oxford street
- Subject property is adjacent to Bond Street underground station
- Subject property let to the largest pharmaceutical chain store in the UK
- 物業位於著名的繁華牛津街，人流興旺
- 鄰近Bond Street地鐵站
- 物業由英國最大型的藥品連鎖店承租



Freehold title
NIA of 8,367 sq.ft.
NIY of 2.34%
Guide Price £67M
5662 8660
Sabella Poon 潘小姐

Prime City Core Investment surrounded by BoE, BlackRock HQ, DB, ING

- Core City of London location
- 150 metres to Bank of England; 250 metres to the entrance to Moorgate station of the Elizabeth Line
- Neighbour to the HQ of BlackRock, European HQ of CCB, Deutsche Bank, ING and others
- 倫敦金融城核心地段
- 距英格蘭銀行僅150米; 伊麗莎白線Moorgate站的入口僅250米
- 與貝萊德總部，建設銀行歐洲總部，德意志銀行，ING等為鄰



Net Initial Yield: 5.41%
Guide Price £25M
£811 psf
6215 1618
Kelvin Wong 黃先生

High yield office in London emerging tech hub

- High yield
- Located in Farringdon, an emerging tech hub where Samsung and Amazon are located
- Within eight minutes' walk to Farringdon crossrail station
- 高回報
- 位處Farringdon的新興科技中心，Samsung及Amazon均位處當地
- 8分步程可抵達Farringdon crossrail火車站



Net Initial yield of 5.31%
Guide Price £9.97M
5326 3344
Timothy Chan 陳先生

High Yield Prime Landmark Investment

- Freehold city centre landmark historic building
- Situated in Manchester's prime retailing central core and close to House of Fraser and Harvey Nichols department store
- Highly reversionary with number of viable asset management initiatives
- 市中心永久業權地標歷史建築
- 位處曼徹斯特的主要優越零售中心，毗鄰福來莎百貨及夏菲尼高百貨
- 具多項資產增值方案



Net Initial Yield: 6.00%
Guide Price £17M
£304 psf
5662 8660
Sabella Poon 潘小姐

Secure Freehold Retail Portfolio Single-let to NatWest

- All assets are freehold
- Single-let to NatWest
- FRI leases expiring in December 2037 with annual rental reviews based upon RPI
- 所有物業都是永久業權
- 由NatWest銀行單一承租
- 2037年12月才到期的全面維修保險（FRI）租約，並每年按通脹（RPI）水平加租



Net Initial Yield: 5.75%
Guide Price £16.26M
£255 psf
6215 1618
Kelvin Wong 黃先生

Unique listed building in prime location

- Rare opportunity to acquire a trophy asset in the heart of Mayfair
- Within easy walking distance to Bond Street and Oxford Circus
- Opportunity to extend office to 5th floor
- 位處Mayfair市中心的珍罕物業
- 舉步可達Bond Street及Oxford Circus
- 辦公室可擴建至五樓



Reversionary yield of 3.81%
Guide Price £17M
5326 3344
Timothy Chan 陳先生

Atlantis House, Grenada 加勒比海島國獨立屋



Grenada – The Spice Isle of the Caribbean

Unique Opportunity to Own A Dream Home
Surrounded by Magnificent Natural Beauty

Sited on a plateau, this masterfully designed single-level villa enjoys tranquility and privacy, as well as water vistas from every room. The crowning glory of the home is the breath-taking outdoor pool that seems merge with the Atlantic Ocean.

Built on a 38,000 sq.ft. land, this gated residence offers 3 bedrooms, a fully appointed guest suite with private entrance and a separate maid's quarter. With a 2-car garage, photovoltaic system, video surveillance, back-up generator among its amenities and is located only 20 minutes from city centre and international airport.

Discover the breath-taking natural beauties, take short walks along guided trails or follow untamed pathways, just simply relax and enjoy a simple way of life in Grenada!

Available for sale, for more details please contact us.
物業現正出售，聯絡我們了解更多資料

加勒比海香料島國 - 格瑞那達

風景如畫的雅致別墅
打造夢想之家的絕妙選擇

這座精心設計的單層別墅坐落於高原上，享有寧靜和隱私；更巧妙地利用了其地理位置優勢，令所有房間都可盡享壯麗海景。別墅最特別之處是室外泳池，仿若與一望無際的大西洋海景相連。

建於38,000呎土地上，別墅設有3間睡房、備有獨立門戶的賓客套房，以及員工宿舍小屋。另外備有一個雙車位車庫、太陽能供電系統、視像監控保安系統、後備供電系統等。距離市中心或國際機場不過20分鐘車程。

探索令人嘆為觀止的自然美景，沿著彎彎小徑緩緩散步或漫步探索未被開墾的小路，放鬆身心，享受格瑞那達簡單、恬靜的生活環境！

Inquiries / 如欲垂詢，請聯絡：

Eric Wong 王先生

+2152 4848

eric.wong@landscape-christies.com





Prime en bloc residential bldg in central Tokyo

Shibuya-Ku, Tokyo 東京 涉谷區

- Subject property is a 4 storey reinforced concrete en bloc residential bldg.
- Completion date will be June 2018
- Projected reversionary yield upon full occupancy will be 16,128,000 JPY p.a.
- 6 min walking distance to Yoyogiuehara station of Tokyo Metro Chiyoda Line
- 樓高四層鋼筋混凝土住宅大廈，約建於2018年6月
- 如果滿租，年租金收入16,128,000日元
- 距離東京地下鐵千代田線的代代木上原站僅6分鐘步程

Freehold title

GIA of 299.90 sq.m.

Projected reversionary gross yield will be 4.0%

Guide Price JPY 403.20M (approx. HK\$28.8M)

En bloc residential bldg in Tokyo

Koutou-Ku, Tokyo 東京 江東區

- Subject property is a 5 storey reinforced concrete residential bldg.
- Completion will be around June 2018
- Projected reversionary gross rental is 17,964,000 JPY p.a. when fully occupied
- 5 min walking distance to Monzennaka-Cho station of Tokyo Metro Tozai Line, Toei Oedo Line
- 樓高五層鋼筋混凝土住宅大廈，約建於2018年6月
- 如果滿租，年租金收入17,964,000日元
- 距離東京地下鐵東西線及都營地下鐵大江戶線的門前仲町站僅5分鐘步程

Freehold title

GIA of approx. 410.53 sm

Projected reversionary gross yield will be 4.50 %

Guide Price JPY 399M (approx. HK\$28.5M)



Prime en bloc residential bldg in Tokyo

Kita-Ku, Tokyo 東京 北區

- Subject Property is an en bloc residential bldg comprising 16 self contained residential units. They are housed in a 4 storey reinforced concrete structure with 1 basement level
- Completion time was January 1993
- Projected reversionary gross rental will be JPY14,628,000 p.a.
- 8 min walking distance to Tabata Station of JR Yamanote Line, JR Keihin-Tohoku Line.
- 8 min walking distance to Komagome Station of JR Yamanote Line. Tokyo Metro Nanboku Line
- 樓高四層鋼筋混凝土住宅大廈，連一層地庫，共16個住宅單位
- 建於1993年1月
- 年租金收入14,628,000日元
- 距離JR山手線及京濱東北線的田端站8分鐘步程，
- 距離JR山手線及東京地下鐵南北線的駒込站8分鐘步程

Freehold title

GIA of approx. 488.24 sm

Projected reversionary gross yield upon full

occupancy will be 5.22%

Guide Price JPY 280M (approx. HK\$20M)

Super prime en bloc residential bldg in Shinjuku

Shinjuku-Ku, Tokyo 東京 新宿區

- Subject property is an en bloc 5 storey reinforced concrete structure with one level of basement
- Will be completed around June 2018
- Projected reversionary gross rental upon full occupancy is JPY18,920,000 p.a.
- 6 min walking distance to Takadanobaba Station of JR Yamanote Line and Tokyo Metro Tozai Line
- 樓高五層鋼筋混凝土住宅大廈，連一層地庫
- 約建於2018年6月
- 如果滿租，年租金收入18,920,000日元
- 距離JR山手線及東京地下鐵東西線的高田馬場站6分鐘步程

Freehold title

GIA of approx. 454.76 sm

Projected reversionary gross yield of 4.73%

Guide Price JPY 400M (approx. HK\$28.57M)



中上環CBD全幢商廈

罕有全幢 家族傳承瑰寶

CENTRAL MID-LEVELS

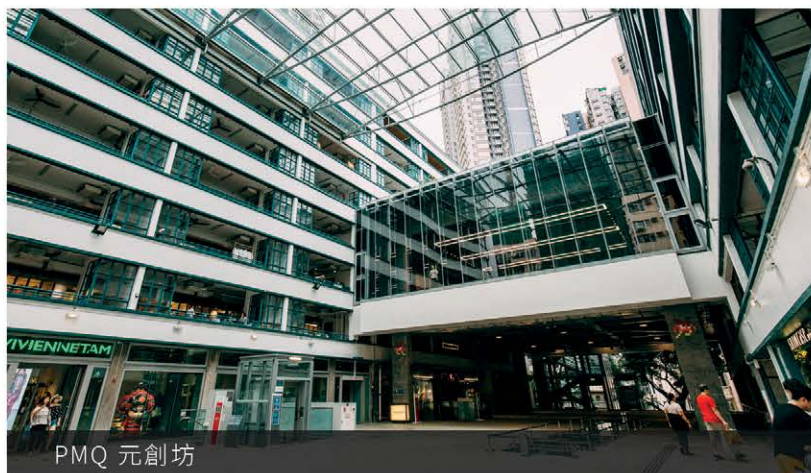


總面積: 約 32,000 餘呎
每層: 約 1,200 餘呎

戰略位置 無法取代
矜罕地段 中區CBD
罕有全幢 家族傳承
業主特約 全幢代理



中環半山自動扶手電梯



PMQ 元創坊



特約委託

For Sale 售價:
HK\$7億餘

可以公司轉讓股份形式買賣
CAN BE SOLD VIA COMPANY
SHARES TRANSFER (NEGOTIABLE)

Inquiries:
Mr. Lai

☎ +852 9484 5501

ROLLS-ROYCE

BLACK BADGE

Ghost, Wraith and Dawn Black Badge are the boldest expression for those who dare to be different. Embrace their powerful presence. Be intoxicated by their arresting aesthetic. Be captivated by the intense driving experience.

Be released from convention. Discover Rolls-Royce Black Badge.



Rolls-Royce Motor Cars Hong Kong
Shop 4, G/F, Wu Chung House, 213 Queen's Road East, Wanchai, Hong Kong
Tel: +852 2870 1692 www.rolls-roycemotorcars-hongkong.com.hk

© Copyright Rolls-Royce Motor Cars Ltd 2018. The Rolls-Royce name and logo are registered trademarks.