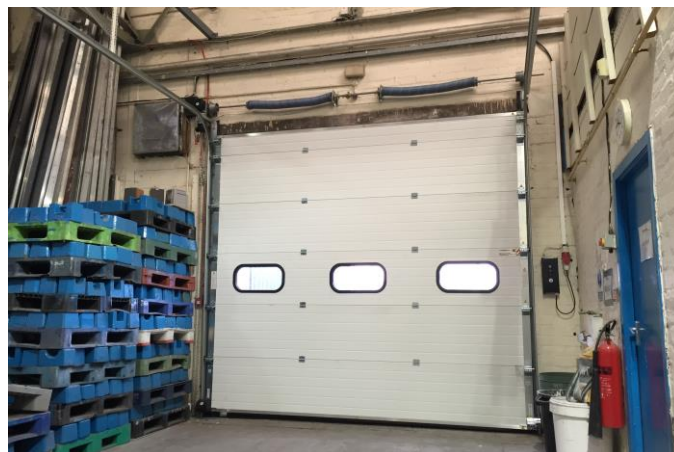




Sectional Overhead Door



Thermal efficiency at its core

Sectional Overhead Doors are a high performance thermally efficient door used in many heavy use residential and industrial environments at vehicle openings and loading bays.

We are an authorised installer of Sectional Overhead Doors from leading trade suppliers and manufacturers who use only the industry's best components while avoiding inferior parts from inferior suppliers.

The industry's best at a competitive price

Kingspan composite door panels are steel sheet bonded to a foam core with a "U" value of 0.9 W/m² K. Full perimeter and joint seals give excellent weather resistance and a sound reduction of 25db. Standard stucco finish is embossed primer with an extensive range of Plastisol, powder coating and factory applied colours available.

The high performance counterbalance springs are mounted on a steel shaft supported by bearing brackets and incorporating cable drums with aircraft quality cables.

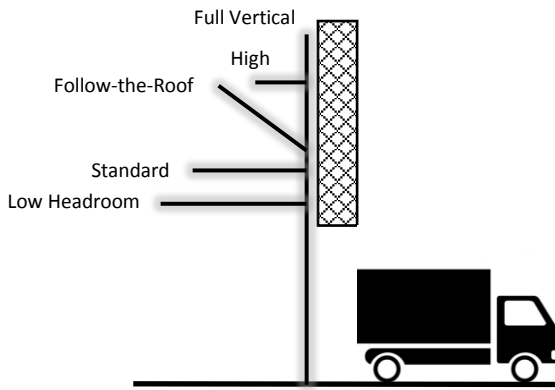
The galvanized steel tracks are designed for free and easy running of the self-lubricating bearing rollers. Track options include standard lift, low headroom lift, follow-the-roof lift, semi-high & high lift and full vertical lift to meet the building construction.

Safety as standard

Electric operation (3 phase direct drive motor) is most common via a low voltage 3 button station (open/close/stop), key switch or remote control.

Safety beams and safety edges are included where applicable to meet the requirements of BS EN 12453:2001.

Cable break & spring break devices and double spring assemblies (for manually operated doors) are included where applicable to meet the single component failure safeguard requirements of BS EN 12604:2000.



Track lift options

Technical Sales & Support

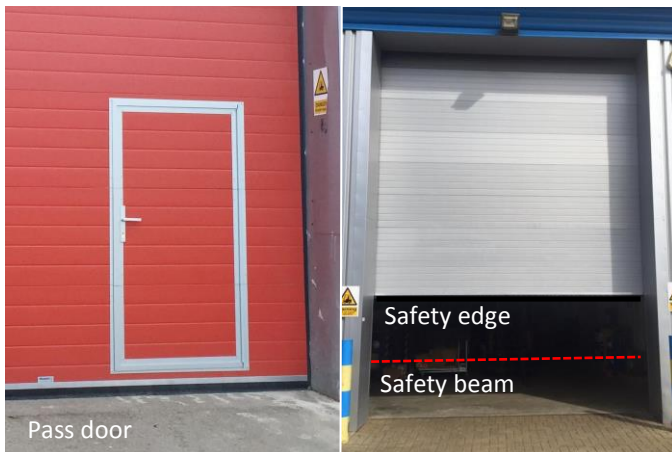
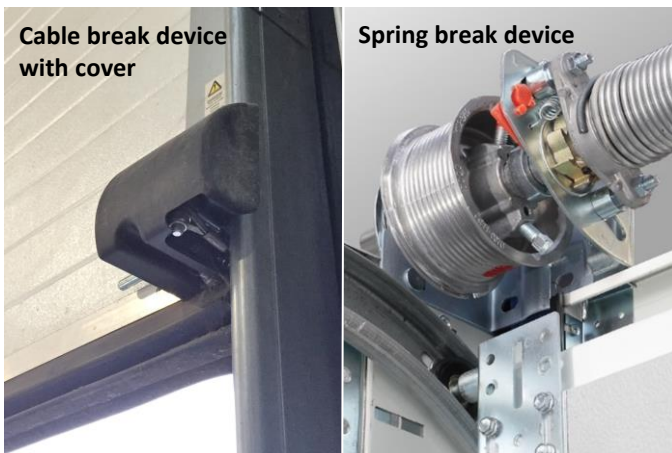
Every enquiry is handled by our dedicated technical sales team who are focussed on providing the best and most cost effective solutions quickly and efficiently.

For every order we appoint a job manager who arranges all material, engineer and Health & Safety resources and scheduling required to carry out the work on time and on budget. Our in house team handle all calls and emails to ensure the smooth running of every job from first contact to completion.

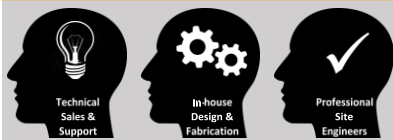
A site meeting with the appointed job manager is held to review the work, confirm site details, to determine site restrictions and hazards, and plan dates for the work.

Our family of long serving and motivated site engineers provide a reliable service delivery of confidence and attention to detail.

Our in-house fabrication facility is capable of handling all Sectional Overhead Door repairs and upgrades from any manufacturer, such as Indupart, Crawford Assa Abloy and Hormann, including replacement panels, spring assemblies, wire ropes, tracks, motors & control panels, activation & safety equipment, often at short notice.



Scotland's leading service provider of **Industrial Doors & Roller Shutters** for reactive and planned repairs, maintenance and renewals



MECHDOORS

on our
reliability

Industrial Doors & Roller Shutters tri

Mechdoors,
69 Kelvin Avenue,
Hillington Park,
Glasgow G52 4LT

Glasgow T: 0141 882 1671
Edinburgh T: 0131 556 4466
F: 0141 880 2818
www.mechdoors.co.uk
info@mechdoors.co.uk

Click: