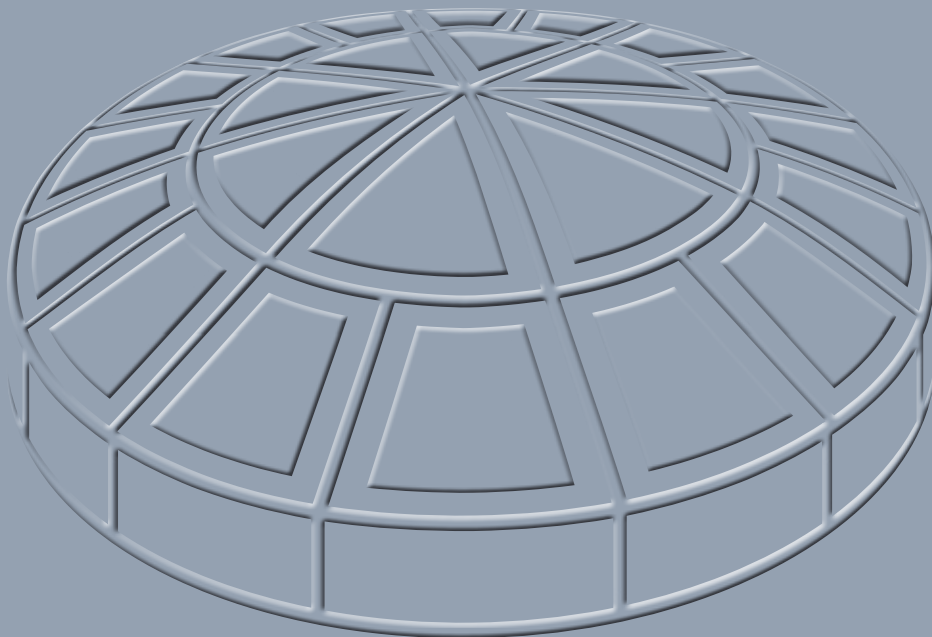


DISASTER  
*IS NOT ALWAYS*  
A DISASTER



*ABCD*  *MES*  
***American Business Continuity Domes***

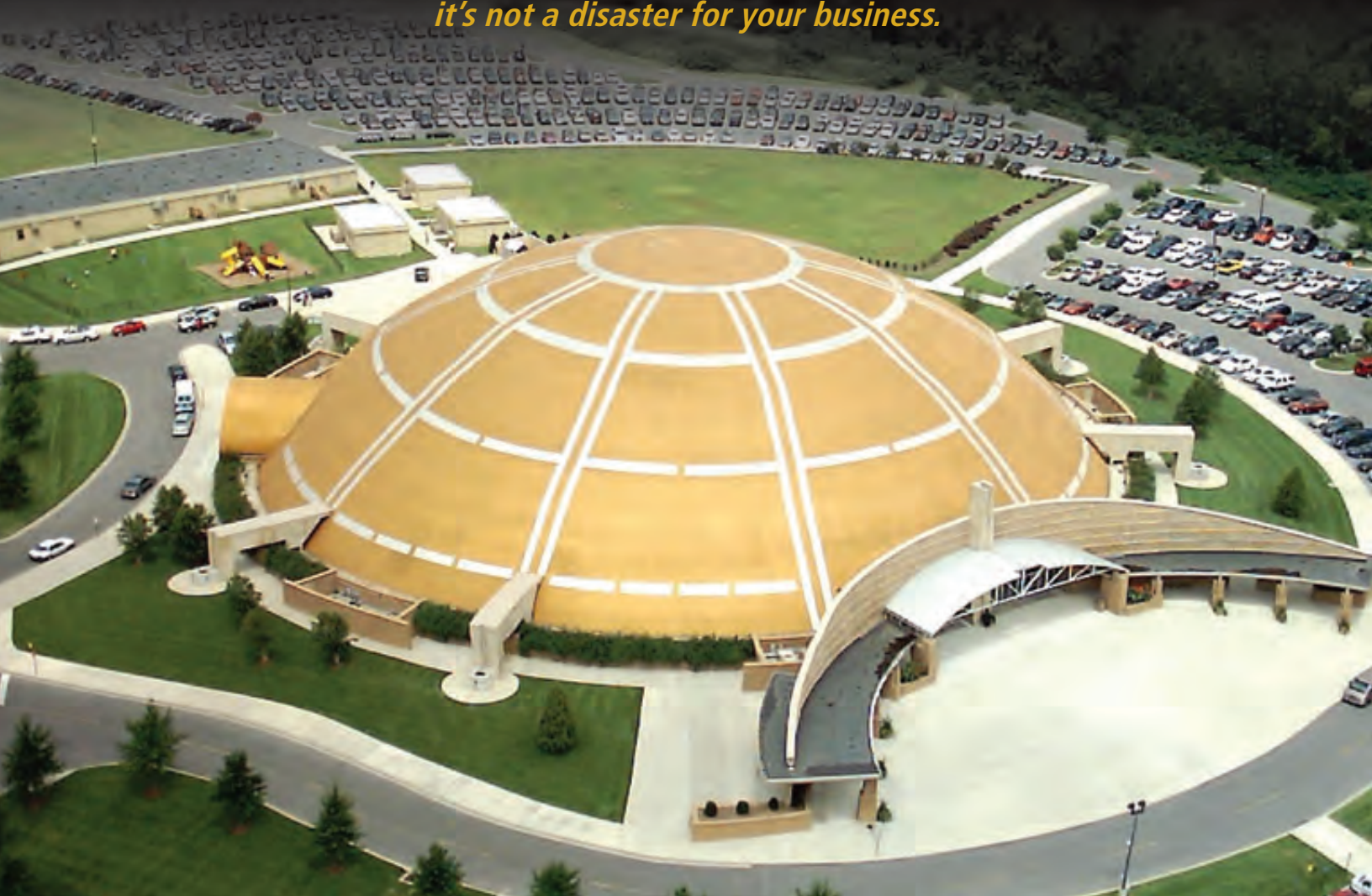
Nobody can predict disaster. It arrives with almost no warning and has little sympathy for those in its path. Whatever form it chooses - hurricane, tornado, earthquake, or fire - disaster is an unavoidable force.

However, you can take definitive steps now to minimize the risk to your business or community so when the worst hits, you come out on the other end safe and sound, with ABC Domes.

American Business Continuity Domes (ABC Domes) starts with the world's most advanced technology. Our domes are built to withstand F5 tornado and Cat 5 hurricane forces. They are earthquake-resistant, fire-resistant and battle-ready no matter what the situation. Then, we back you up with the most comprehensive emergency response and recovery services in the industry.

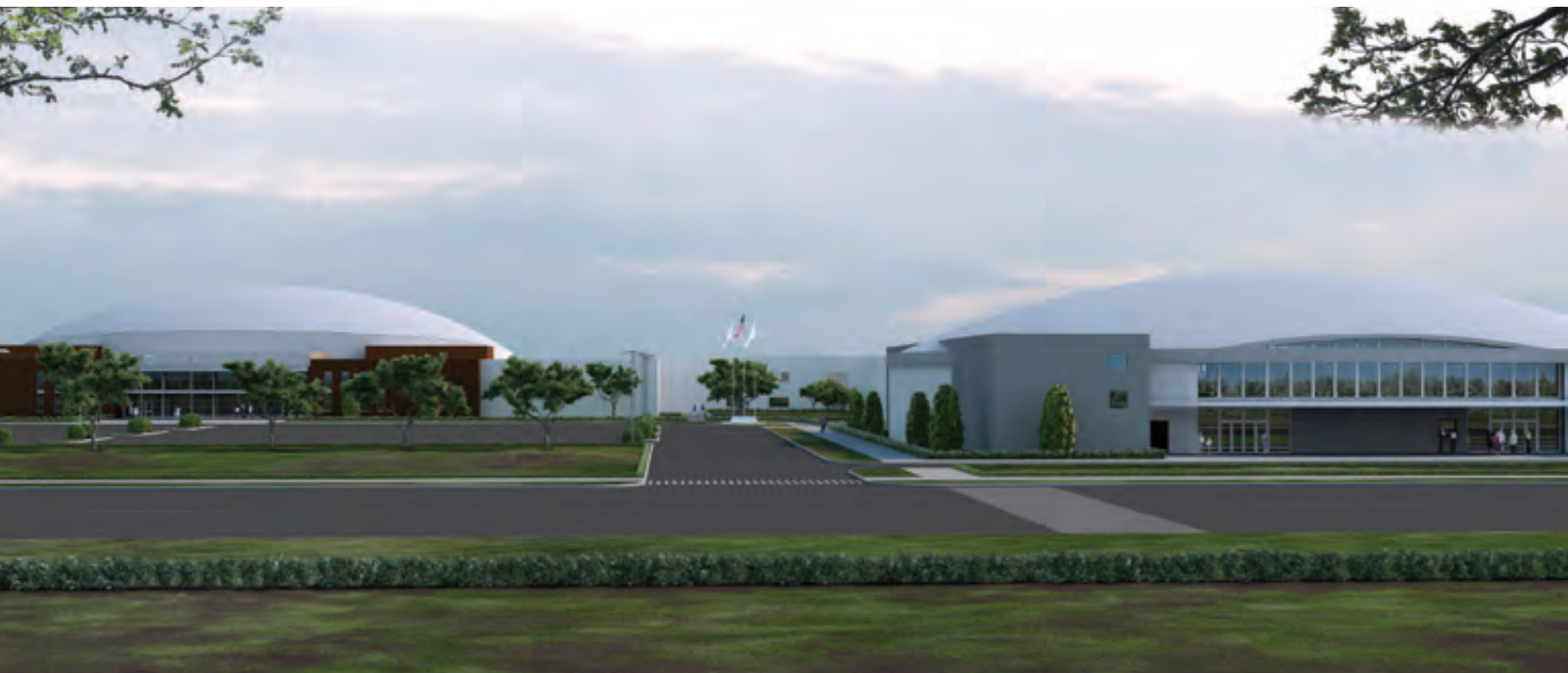
At ABC Domes, we will dramatically mitigate your risk prior to a disaster and we'll be there making things right, during and after any event. Whether you're securing technology, data, documents, equipment, bulk storage, vehicles, personnel or even the general public, no company protects your business better than ABC Domes.

***You can't run. You can't hide.  
But you can be sure that when disaster strikes  
it's not a disaster for your business.***





WE DIDN'T JUST  
*RE-THINK* INDESTRUCTIBLE  
WE *RE-SHAPED* IT



Dome technology dates back to the Roman Architectural Revolution when it was used to shape temples and buildings, including the Pantheon. It's no coincidence that many of these ancient structures still stand thousands of years later.

The basic principle of dome architecture is brilliantly simple. The properties of physics dictate that a rounded dome will be stronger than a structure with hard lines and edges. However, at ABC Domes we've taken this principle far beyond the basics. In fact, the science behind our domes is astonishingly complex and has taken decades to perfect.

***The design technology, engineering breakthroughs, materials innovations and fabrication improvements available exclusively through ABC Domes make our domes the most economical, ergonomic, environmentally sound and disaster-proof structures on earth.***





The strength of ABC Domes comes from thin shell, steel-reinforced concrete that is fabricated using an advanced airform methodology. This exterior shell distributes stress evenly across the dome, so no matter where force is applied it is instantly dissipated.

So how strong are ABC Domes? They can withstand wind speeds over 300 mph (that's stronger than an F5 Tornado or a Cat 5 Hurricane). They are virtually unaffected by seismic activity. They don't burn. They don't rot. They don't weather. They are termite proof, element proof and nearly impossible to compromise even under an all-out man-made assault.

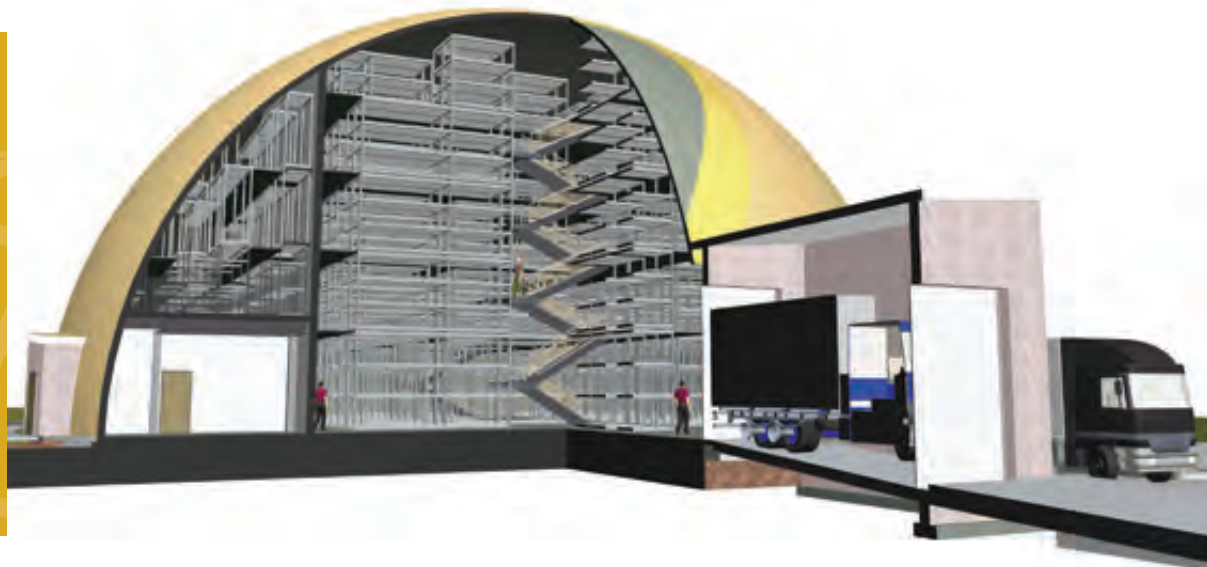
In fact, ABC Domes meet FEMA\* standards for "near-absolute survivability" in the wake of a massive disaster. They are so indestructible that the domes we build today will be just as rock-solid millennia from now.

You've seen what happens to conventional buildings in the wake of a disaster. ABC Domes is here to make sure that never happens to your business.



***DYNAMIC*** USES  
FOR ***DOMÉ*** TECHNOLOGY

Both the private and public sectors are recognizing the unmatched affordability, security and longevity of ABC Domes. If you demand a secure and long-term facilities solution, we are the answer.



ABC Domes' structures are not only indestructible, they are customizable. We can build-to-suit for owners, or custom design interiors for those who prefer to lease. Create one, wide-open warehouse. Build out a safe shelter for your community. Develop a secure technology center. Whatever you need, our team makes it happen.

ABC Domes provides protection for the assets of leading financial institutions, tech corporations, data storage companies, government agencies, emergency response organizations, churches and supply chain/logistics companies. Our domes are also used as multi-purpose gymnasiums, sports arena centers and safe shelters.



## Construction or Leasing of Domes

### *Emergency Equipment & Vehicle Storage*

ABC Domes' clients use these domes to store emergency equipment, vehicles, mobile command centers and supplies, which are deployed in the event of a disaster. ABC Domes' Fleet Maintenance crews maintain the equipment in perfect running order and keep the equipment and vehicles in ready-to-move condition. The typical configuration includes a small suite of office, restrooms, an IT storage vault, and kitchen facilities.

### *Disaster Recovery Command Centers*

ABC Domes' structures serve as secure command centers for municipalities, local emergency management agencies, port authorities, even commercial banks. The typical configuration includes offices and conference rooms, satellite communications and command capabilities, and living/sleeping quarters equipped for extended periods of time.

### *Community Safe Shelters*

ABC Domes and its strategic alliance expertly design, engineer and construct FEMA-360 compliant\* dome structures. These Safe Shelter Domes™ are the most innovative, disaster-resistant and sustainable buildings on the market and typically have multiple purposes as a gymnasium or community center.

### *Bulk Storage*

Through our partner, Dome Technology, the solution for bulk storage is clear. The DomeSilo™ is stronger, 100% waterproof, 100% insulated and offers increased storage capacity. These cost effective and green domes also offer protection from heat, fire and explosions.

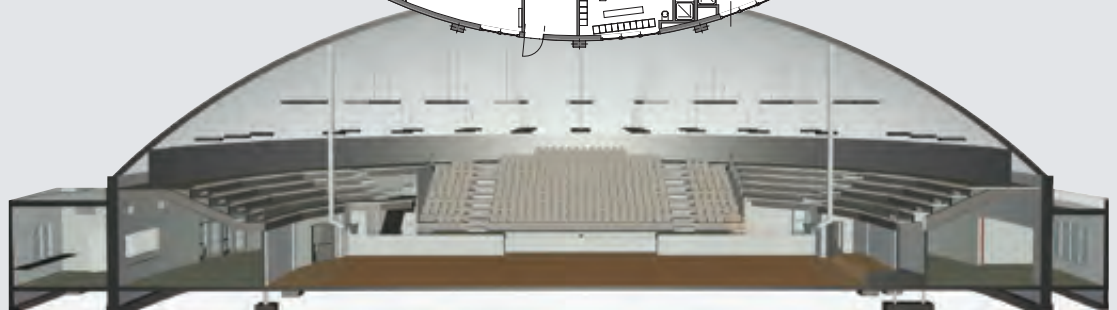
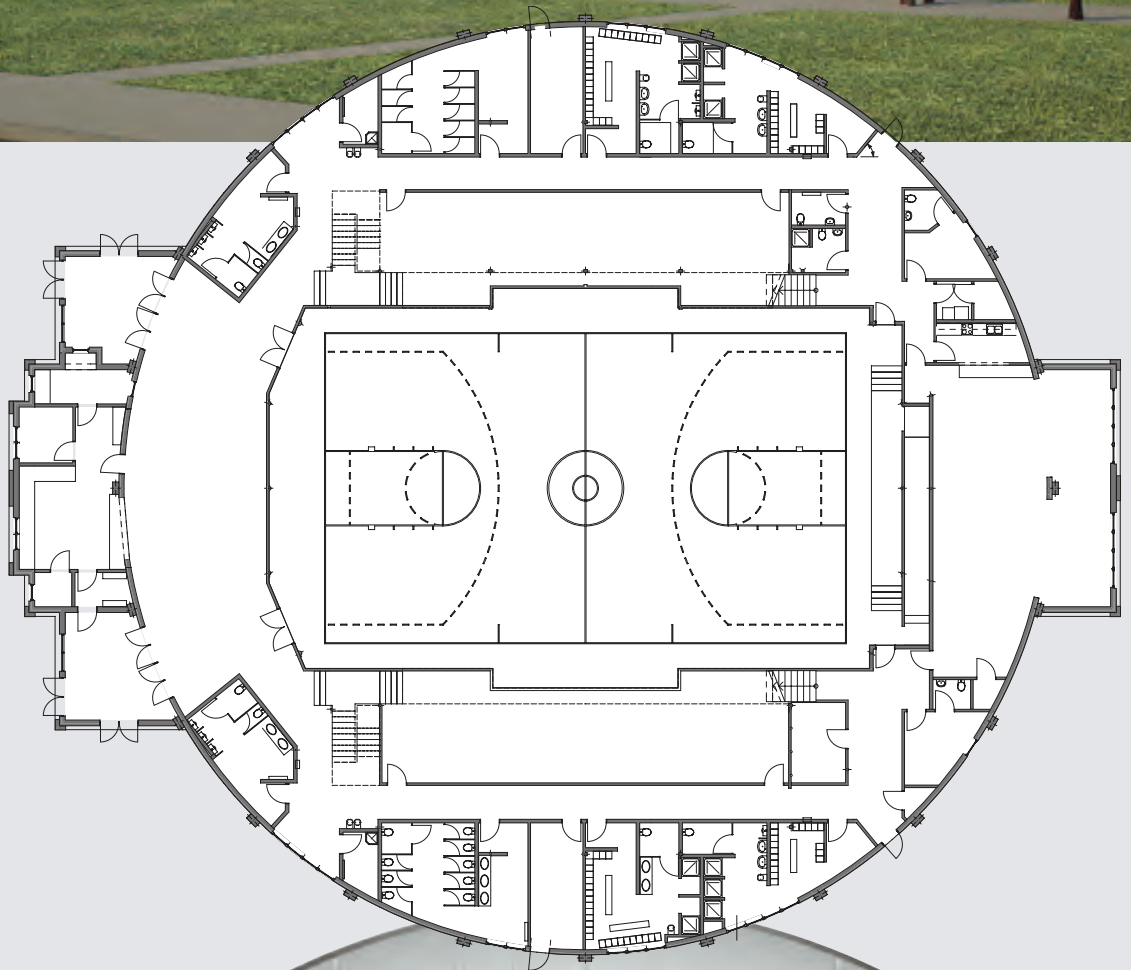
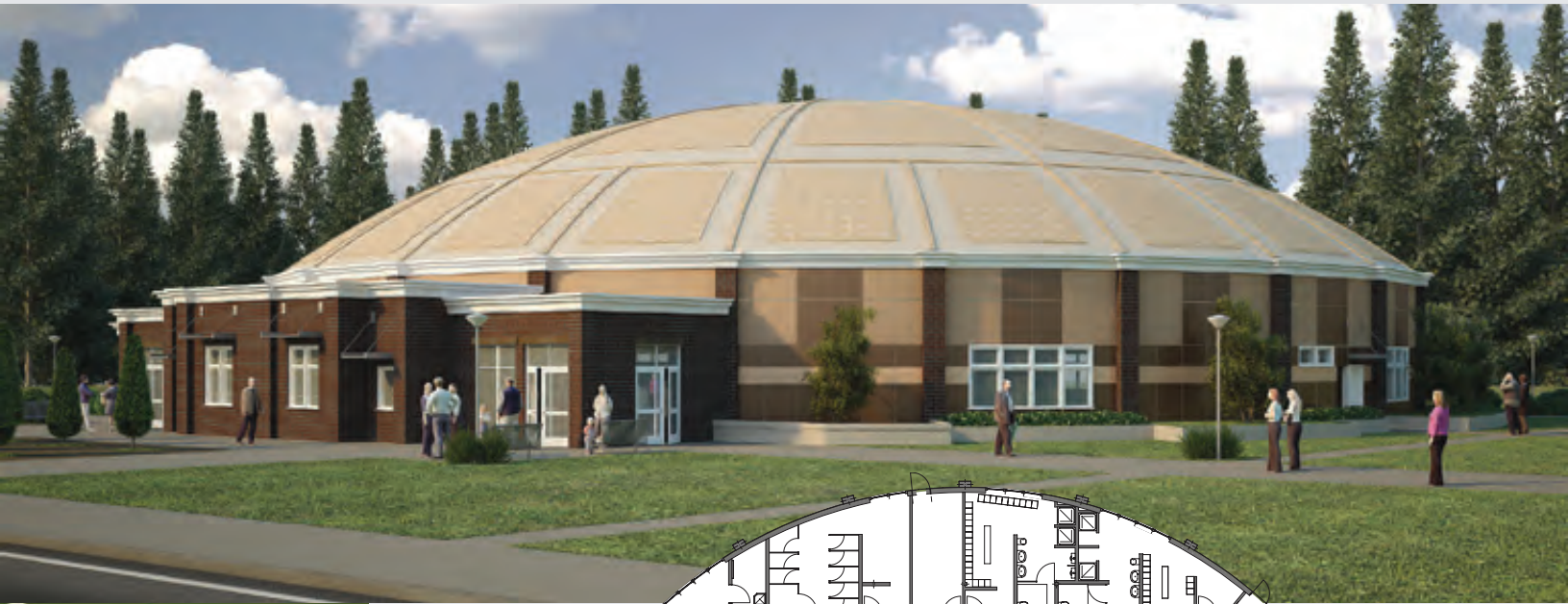
### *Records Warehousing & Inventory*

Domes outperform conventional storage solutions in three primary ways: rapid construction, structural integrity, and cost and space efficiency. Domes deliver superior insulation, maximum waterproofing and a condensation-free environment – perfect for storing critical data, records, media and product inventory.

### *Specialty Purpose*

ABC Domes will create highly specialized interior configurations based on unique customer needs. These include 3-D holographic video projection, IT server parks and more.

# 1,200 SEAT GYMNASIUM



*Usable Space Beneath Seating*

RELIABLE *RESPONSE* AND  
*RECOVERY* SERVICES



True confidence comes with knowing that, no matter what the situation, you'll be powered up, repaired and back to business as usual and as soon as possible.

That's why ABC Domes is there for our dome clients with the industry's most comprehensive Disaster Recovery and Business Continuity Services. We know our domes will safeguard your people and assets. But we want to make sure you have everything else you need: food, water, fuel, power, Internet access, voice communications, repair services, and more.

To guarantee it, we house a full fleet of emergency vehicles and mobile command centers, fully outfitted with satellite communications, GPS systems, CB and NOAA radios, on-board generators, conference rooms, in-motion TVs and essential facilities.

**Five essential DR/BC services exclusively from ABC Domes:**

- 🏠 *Pre-Disaster Preparation*
- 🏠 *Deployment of Emergency Response Vehicles*
- 🏠 *Communications Support*
- 🏠 *Maintenance and Service*
- 🏠 *Damage Assessment/Mitigation and Dehumidification*





DISASTERS ARE *COSTLY*  
PREPARING FOR ONE *IS NOT*



ABC Domes are among the most affordable, efficient and environmentally sensitive structures on earth. We have taken into account every variable and studied every possible contingency to ensure that we deliver the optimum price-to-value ratio. The domes are built in half the time to last a lifetime, using far less materials than conventional structures. What's more, our domes deliver tremendous long-term savings in energy consumption, insurance, maintenance and even water usage.

*In fact, when amortized over 20 years, the energy savings alone of an ABC Dome typically offset a major portion of the overall cost to build!*

#### **Cost-conscious facts about ABC Domes:**

- *Lower materials costs - while made primarily of concrete and steel, ABC Domes use 50-70% less materials than traditional buildings.*
- *Energy and maintenance costs generally run 50% less than traditional buildings.*
- *In the event of a disaster you'll face near zero damage in a dome compared to the possibility of catastrophic damage and massive repair bills in a conventional structure.*
- *Zero windstorm insurance requirements.*

#### **Environmentally conscious facts about ABC Domes:**

- *Built to LEED Silver Certification standards.*
- *30-35% reduction in energy consumption and costs.*
- *Low-emitting paints, recycled materials, grey water recycling, LED lighting.*
- *Use 40% less water than conventional buildings.*
- *Geothermal HVAC Systems.*



ABC Domes are affordable to build, they incorporate the latest green technology, are efficient to operate, and protect your people and business from the most devastating disaster conditions. Plus, we'll be there for you before, during and after the event with the most extensive recovery services in the industry. Disaster is never a disaster with ABC Domes. To learn more, call 305.633.3336 or visit us online at [www.abcdomes.com](http://www.abcdomes.com) today.



# STRATEGIC ALLIANCE



ABC Domes is proud to have strategic alliances with two of the most renowned dome design, engineering and construction firms in the world: Dome Technology and ES2 Engineering Solutions.



**Dome Technology** is the premier builder of insulated steel reinforced concrete domes. Over the past 30 years, Dome Technology has successfully **completed 500 domes throughout the United States and internationally**. Proven and innovative design, engineering and construction methodologies separate Dome Technology from all other dome builders. Its air forms are manufactured and engineered by an in-house team in a state-of-the-art factory. The specialty of their construction process is a significant advantage. The number and experience of Dome Technology's management and technical personnel far exceed the competition. In the critical areas of construction, air form installation, inflation, urethane foam, iron work and shotcreting, Dome Technology's experience is unmatched by anyone else in the industry.



**Engineering Systems Solutions (ES2)** is a full-service, licensed, and insured structural, electrical, plumbing and mechanical engineering company and a Building Systems Commissioning firm, with offices located in Sacramento, Las Vegas, and Idaho Falls. The Idaho Falls office is the corporate headquarters and was established in 1999. The ES2 design team is comprised of 35+ professionals including principal engineers, project managers, engineers, and CAD technicians as well as 5 customer interface personnel. The company's engineers are licensed in 42 states and have many years of experience to draw upon. ES2 has established itself as a highly recognized name in a wide variety of projects, both in the public and private sectors. In the area of reinforced concrete, thin-shell concrete domes, ES2 has advanced design and analysis skills not found in any other professional firm in the world. **ES2 has been the engineer of record for the vast majority of reinforced concrete shells constructed using the air formed method around the world.**



Corporate Headquarters  
2500 NW 39 Street  
Miami, Florida 33142  
T: 305.633.3336 | F: 305.634.8000  
[www.abcdomes.com](http://www.abcdomes.com)



3007 East 49th North  
Idaho Falls, ID 83401  
T: 208.529.0833 | F: 208.529.0854  
[www.dometech.com](http://www.dometech.com)



4943 North 29th East, Suite A  
Idaho Falls, ID 83401  
T: 208.552.9874 | F: 208.552.9302  
[www.es2eng.com](http://www.es2eng.com)

*\* The interviewer/reader/viewer should not infer that the use of the word FEMA implies any formal or informal relationship between FEMA and American Business Continuity Domes Inc. ("ABC Domes") or any member of the "Dream Team" or organization or individual noted in this document or referenced in this interview. FEMA neither sponsors nor endorses any event, activity, product or service as referenced herein.*