



# SM30

## LED STREET LIGHT

WORLDWIDE POWERED

ACTIVE POWER FACTOR CORRECTION (PFC)

ADAPTIVE ROTATION INSTALLATION FRAME, RETROFIT WISE

LEDs – 160 LM/W

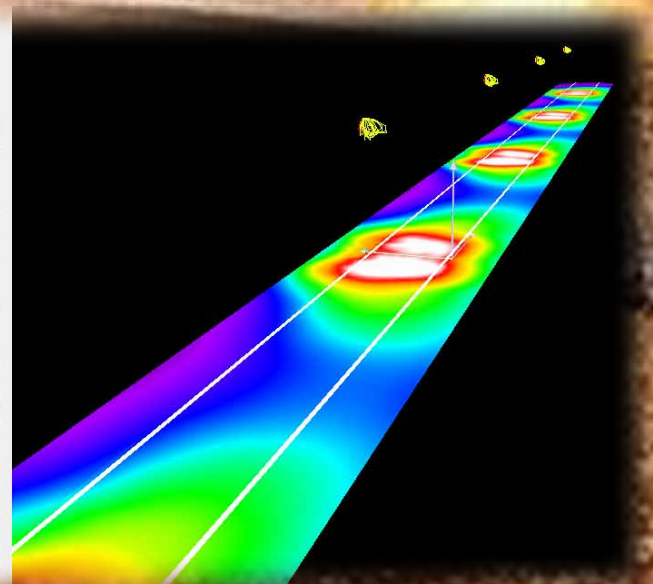
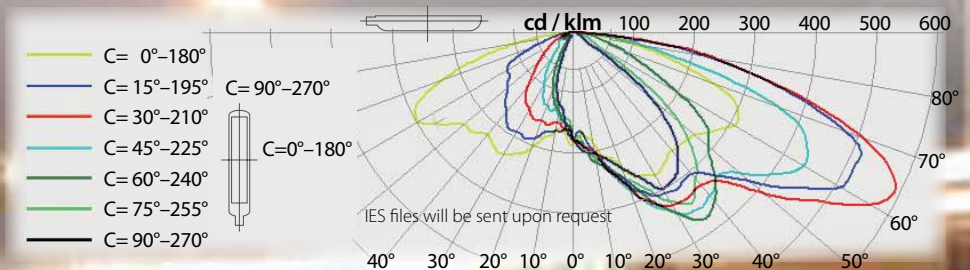
EXTREMELY WIDE ASYMMETRIC LENSES

ZERO LIGHT POLLUTION

AUTOMATIC ECONOMY LATE NIGHT DIMMING \*

### SM30

- HIGH ENERGY EFFICIENCY
- NO MAINTENANCE COSTS
- LONG LIFECYCLE
- HIGH QUALITY AREA ILLUMINATION
- ERGONOMICAL – CLOSE TO NATURAL LIGHT
- ECOLOGICAL – MERCURY AND LEAD FREE



# SM30

## SPECIFICATIONS

|   |                |
|---|----------------|
| AC Input Voltage                          | 90 ÷ 305 V AC  |
| DC Input Voltage                          | 127 ÷ 431 V DC |
| Mains Frequency                           | 47 ÷ 63 Hz     |
| Power Factor (PF) at 230V                 | min 95 %       |
| Power Factor (PF) at 115V                 | min 98 %       |
| LED Power                                 | 30.4 W         |
| Power Efficiency                          | 88 %           |
| Total Power                               | 34.5 W         |
| Average power in late night dimming mode* | 24.5 W         |
| LED Light Output                          | 160 lm/W       |
| Current Efficiency                        | 78 %           |
| LED Luminous Flux                         | 3 822 lm       |
| Junction Temperature at Ta = 25°C         | 70°C           |
| Thermal Efficiency                        | 91 %           |
| Lens Efficiency                           | 92 %           |
| Real Luminaire Efficacy (LER)             | 92 lm/W        |
| Color Rendering Index (CRI)               | 65 ÷ 80        |
| Real Lamp Luminous Flux for:              |                |
| Cool White (CRI 65)                       | 3 200 lm       |
| Neutral White (CRI 75)                    | 2 970 lm       |
| Warm White (CRI 80)                       | 2 510 lm       |
| Zero Light Pollution                      | 0 cd at 90 deg |
| Operating Temperature                     | - 40° ÷ +45°C  |
| Operating Humidity                        | 10 ÷ 95 % RH   |
| Lifespan L70                              | > 160 000 h    |
| Ingress protection rating                 | IP 65          |
| Electrical Safety Class                   | Class II       |
| Polycarbonate optical cover               | optional       |

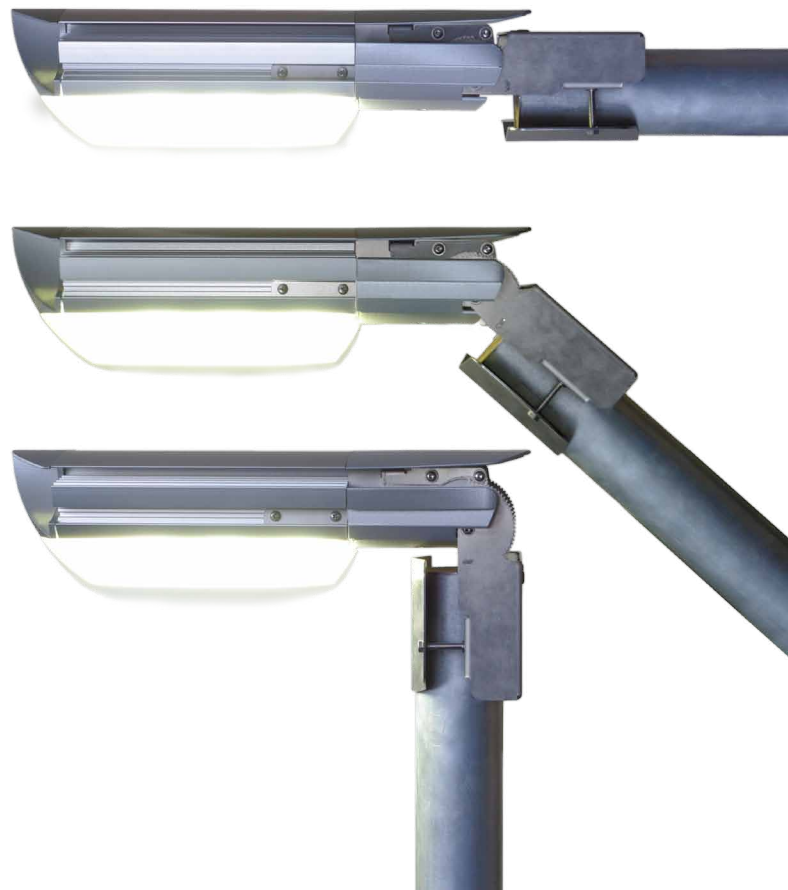
## MECHANICAL CONSTRUCTION

|                                    |                                 |
|------------------------------------|---------------------------------|
| Marine Grade Aluminium Alloy Body  |                                 |
| Stainless Steel Rotation Mechanism | 115 deg<br>(- 90 deg ÷ +15 deg) |
| Installation Diameter              | ø 42 ÷ ø 76 mm                  |
| Dimensions                         | 380 x 180 x 80 mm               |
| Weight                             | 2.47 kg                         |

## Additional deliveries

- Zink plated metal poles
- Means of fixing the pole underground / fundament

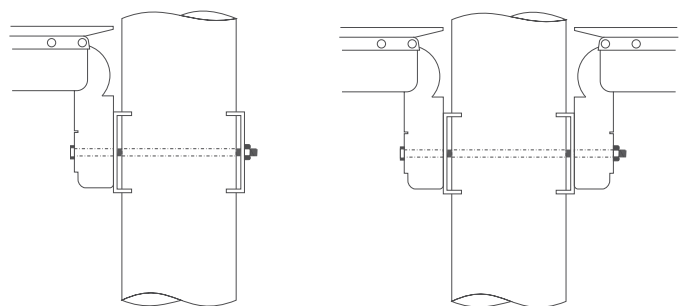
- \* Late night dimming:  
 50 % illuminance decreasing after 4 hours till 1 h before dawn;  
 Optional illuminance decreasing – 20 ÷ 90 %;  
 Optional dimming start – 2 ÷ 8 hours;  
 Optional dimming stop – 0.5 ÷ 3 h before dawn.



## SM30 Application According EU Standards

|  |                     |
|--|---------------------|
| 2 lanes x 3.5 m ME5 streets<br>(less than 60 km/h) | L = 25 m; H = 6.5 m |
| 1 lane x 4.0 m ME5 streets<br>(less than 60 km/h)  | L = 33 m; H = 6 m   |

L – Distance between the light sources (poles)  
 H – Height of the light source above the ground



Optional kit for mounting one or two lamps sideways to the pole ø 70 ÷ 200 mm