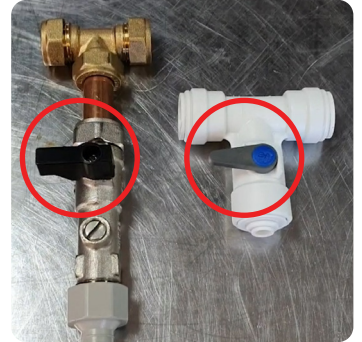




## Disconnection and reconnection for replacement

1

Please find the installation valve and turn the levers horizontally, these can be found underneath the sink. Once turned horizontally the water is shut off. (if you are struggling to find the installation valves move to point 2. Which should still suffice).



2

Behind your Water System, you should find this in-line tap, please isolate by turning the valve horizontally which will stop the water flow to your System.



3

As the valves have now been isolated and water flow stopped, you now need to release the pressure in the System. Please do this by pressing the cold water dispense button on the front of your machine for a couple of seconds. You should not see any water coming out.



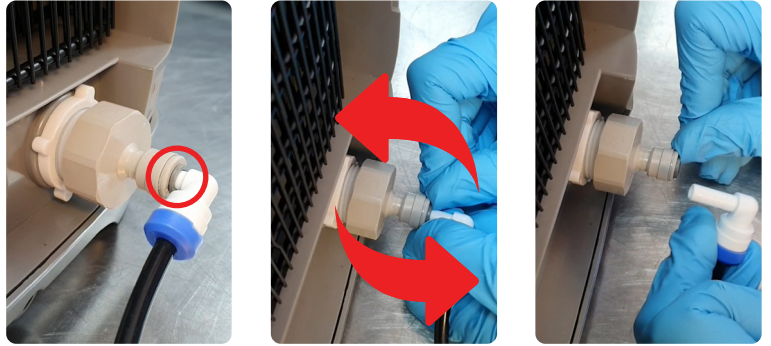
4

Please switch off and disconnect the plug from the socket.



# 5

At the rear of your System you should see the main inlet. This needs to be disconnected. Please do so by pushing the darker grey ring inwards, and at the same time pulling the waterline pipe out.



# 6

Now remove the filter and UV lamp from your old Water System. Please place them to one side.



# 7

You can now remove the old System and get your new System ready for setup.



# 8

Insert the filter and UV lamp into the new System.



# 9

Reconnect the waterline into the new System by pushing back into the dark grey ring.



# 10

Ensure that the heating element is switched off. The 0 should be pushed in.



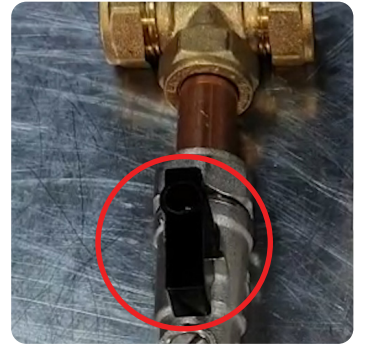
# 11

Plug in your new System and switch on the power.



# 12

Turn on the installation valves if you turned them off.



# 13

Turn on the in-line tap behind the system.



# 14

At this point please check the waterline pipe to ensure there are no leaks.

If any leaks happen, please re-isolate and check your connections.



# 15

Once you have checked there are no leaks, place a jug underneath the spout and follow the on-screen instructions to fill the hot and cold water tanks and to flush them through (this is normal practice with a new system). At this stage please do not set the boiling temperature above 96 degrees as this may cause leaks.



# 16

After flushing the hot and cold-water tank, please switch on the heating element at the back of the machine.



# 17

Congratulations! You have now successfully exchanged your machine. Please refer to your user manual for all other settings.

