



# Leisure & Commercial 15

Royal Institute of British Architects  
Directory of Chartered Practices

RIBA   
Architecture.com



# Uzin Ltd.



## Free CPD Seminars from Uzin Ltd Modern Installation Systems for Floor Coverings

- Expedite projects with short time frames.
- Easily gain BREEAM certification.
- Examine rapid remedial repairs and refurbishments.
- Investigate the latest innovations and developments.
- Identify the correct specification framework.
- Evaluate best practice.

To book a free CPD seminar or to find further information e-mail [info@uzin.co.uk](mailto:info@uzin.co.uk) or visit [www.uzin.co.uk/architects](http://www.uzin.co.uk/architects)

Brands of Uzin Utz AG







'I need and want collaborators: if we are going to be really inclusive and reach lots of people we need lots of voices, not just one.'

Jane Duncan, President RIBA

## Inclusive leadership

Welcome to Leisure & Commercial 15, the directory of RIBA accredited Chartered Practices and Client Advisers who set the benchmark for projects ranging from speculative office developments through to retail parks and major sports venues.

The process of architecture is inherently diverse. To make any building happen you need to engage with a huge variety of people from clients and craftspeople, through to electricians, planning officers and accountants. In some ways being an architect is like being the conductor of a building orchestra and if you have the right mix of players, you simply have a better outcome.

That's why the RIBA is promoting increasing diversity in the construction industry. In recent months we've launched our Role Models project and strengthened the accreditation criteria for RIBA Chartered Practices regarding equality and diversity. Each one of the 12 role models whose stories we've featured on architecture.com show what's great about diversity and why it's important.

Listening to clients and understanding their needs is an essential part of delivering a successful project. With a more diverse industry we're likely to engage with more clients and deliver better projects. Places and spaces will only work if people buy into them and the best way we, as an industry, can continue to create great spaces is by encouraging more voices to join the conversation.

Choosing the right architect is vital to a successful project. This directory can help with your search, alongside providing information on working with an architect. Outlined in this publication are also details of the specialist services offered by our Client Services team that can help you select the right architect for your project.

Jane Duncan, President RIBA

To read more about the RIBA Role Models, please visit [www.architecture.com/rolemodels](http://www.architecture.com/rolemodels)



# Welcome to Leisure & Commercial 15

## TNG Youth and Community Centre

Wells Park Road, London SE26

### RCKa

Architect, see page 198

Client **Private**

Contract value **Confidential**

Gross internal area **1,200 m<sup>2</sup>**

Photographer **Jakob Spiersbach**



This building has many virtues. Both its brief and its design are the product of an extensive process of public consultation apparently resulting in an unanimous planning approval greeted by loud cheers from the public. It is both democratic and flexible serving as a community resource in a very deprived area of London.

Internally the building conveys both warmth and spatially dynamic qualities on account of its use of a cross laminated timber structural frame deployed to good effect. It achieves an interesting low-cost façade at high levels by exposing both timber cladding rails and the insulation breather membrane through an external skin of sinusoidal polycarbonate sheeting. This same profile is used to cast the harder wearing lower cladding areas where Ductal Ultra High Performance Concrete is used for the first time in the UK for its strength and anti-graffiti properties.

Its carbon use is low too, not only in terms of embodied energy through its timber frame but also through the energy required for heating and ventilation. Despite a savage bout of value engineering it is crisply detailed and displays a high level of control of exposed services. Despite a design-build contract the build quality is good too.

To summarise this is a very mature piece of work from a very young practice.





## Mary Rose Museum

Portsmouth

## Wilkinson Eyre Architects

Architect, see page 199

Client **Mary Rose Trust**

Contract value **Confidential**

Gross internal area **5,133 m<sup>2</sup>**

Photographer **Hufton+Crow**



Creating a design that copes with a controlled atmosphere for treating and then drying the main structure of the boat, while allowing as much public access and viewing as possible makes this brief about as complex as it gets for an architect. Set in a sensitive historic location, this contemporary building has been designed from the inside-out, housing a precious gem like a specially crafted jewellery box. It creates a unique setting – something like a stage – to give the visitor the true Mary Rose experience with its bespoke showcases, lighting and educational facilities.

The new building is of distinctive and striking design, without taking away from other features through modest scale and use of materials. The structure provides a simple backdrop to the main view of HMS Victory, and successfully screens the clutter beyond. The internal layout is very clever: from a single viewpoint, both the Mary Rose and the recovered artefacts can be seen. By locating the main display at the end of the building, the designers have left corridors free flowing to improve visitor experience and minimize congestion.

The in situ treatment and display of the ship has been a major research and development exercise. Siting a large building lightly on a scheduled ancient monument has been carefully handled. Full disabled access was a criterion from the outset, and careful thought given to the needs and interests of children makes this project an invaluable asset for local schools.





# Leisure & Commercial Projects

1 **THE SANCTUARY** Windsor SL4 3RW  
 Architect **Allen Associates Architects Ltd**  
 see page 135  
 Photographer **Summers Photography**



1

2 **SAMBA SWIRL** London N1 8DU  
 see page 97  
 Architect **Mizzi Studios**  
 Photographer **Mizzi Studios**

3 **WINDLESHAM GOLF COURSE CLUBHOUSE**  
 Bagshot GU19 5HY  
 Architect **Mador & Partners Chartered Architects**  
 see page 196  
 Photographer **Lara Karady**

4 **THE RESTORATION OF BLETCHLEY PARK  
 PHASE 1** Milton Keynes MK3 6EB  
 see page 79  
 Architect **Kennedy O'Callaghan**  
 Photographer **C Armstrong**



2

5 **MIDKENT COLLEGE MAIDSTONE CAMPUS**  
 Kent ME16 8AQ  
 Architect **CC Studio Architects**  
 see page 171  
 Photographer **Chris Way**

6 **MIDKENT COLLEGE MEDWAY CAMPUS**  
 Gillingham ME7 1FN  
 see page 89  
 Architect **CC Studio Architects**  
 Photographer **Beth Kinnaird/MADCreative**

7 **ALBERT'S WORSLEY** Manchester M27 0AA  
 see page 90  
 Architect **Fasciato Architects**  
 Photographer **Chris Hymas**

8 **10 HAMMERSMITH GROVE** London W6 7AP  
 Architect **Flanagan Lawrence**  
 see page 217  
 Photographer **Nick Guttridge**



3

9 **329 BRACKNELL** Berkshire RG12 8PE  
 see page 70  
 Architect **Spratley Studios**  
 Photographer **Nick Kane**

10 **AVELING CENTRE LLOYD PARK**  
 London E17 5JW  
 see page 93  
 Architect **Architecture PLB**  
 Photographer **Timothy Soar**



4

11 **CAFE 57** London NW4  
 see page 88  
 Architect **RS Architects**  
 Photographer **Francesca Colasanti**



5

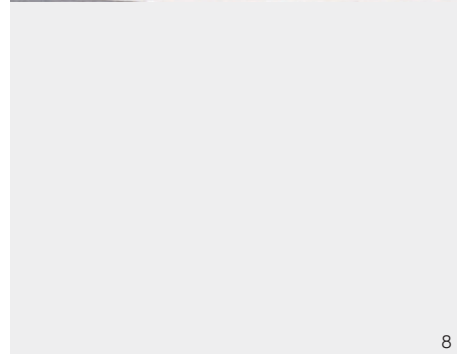
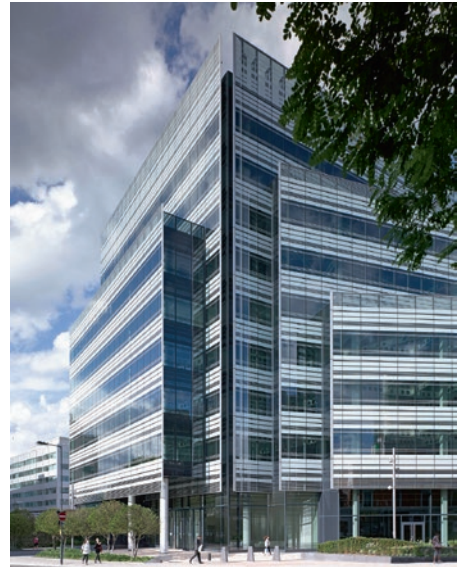




6



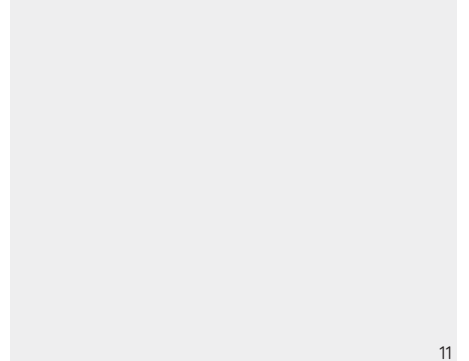
7



8



9



11



10





We are pleased to have worked as the main contractor for The Lensbury Project and wish them every success.

With over 40 years experience, we believe that it's our role as a fit-out contractor to support the objectives of our client and their designers.

We deliver high quality main contractor and project management services for leading leisure industry brands, from one off projects through to national roll-outs.

Tel: 01626 353802 • Fax: 01626 351591  
 Email: [enquiry@wfccontractors.com](mailto:enquiry@wfccontractors.com)  
 Web: [www.wfccontractors.com](http://www.wfccontractors.com)



**Award winning, North West based, Structural Engineering Consultancy.**

We believe in collaboration right from the start, when good structural engineering input can help achieve an efficient, sustainable and cost effective building project.

We have experience working on a wide range of commercial, leisure and residential buildings and our expertise covers all stages including feasibility studies, structural engineering design and support throughout the construction process.

**If you are looking for a comprehensive Structural Engineering service please contact the BDI team today.**

T: 0161 969 3886  
 E: [info@bdistructuralsolutions.co.uk](mailto:info@bdistructuralsolutions.co.uk)



[www.bdistructuralsolutions.co.uk](http://www.bdistructuralsolutions.co.uk)





# The Lensbury, Teddington TW11 9NU

## CHADWICK INTERNATIONAL

16 Upper Woburn Place, London WC1H 0BS

T 020 7269 0920

pa@chadwick-international.com

[www.chadwick-international.com](http://www.chadwick-international.com)

Contact **Andrew Chadwick**

Client **Lacy Curtis-Ward**

Main Contractor **WFC Contractors** p50

Photographer **John Bellars Photography**

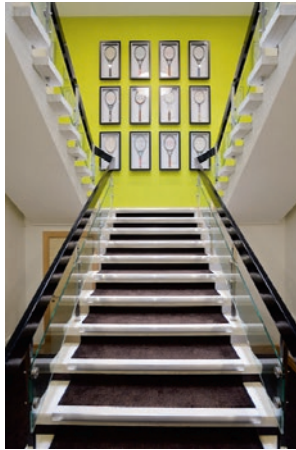
The Lensbury Hotel, Club and Conference Centre is set within 25 acres of beautiful landscaped grounds on Teddington Lock. Founded in 1920 as a sports club for Royal Dutch Shell staff in the UK it became well known for its hosting of cricket, tennis and rugby events and international sporting teams of all types. From the 1990's onwards it has opened its doors to a broader constituency of business and family.

Owned by the Shell Pension Fund, whose remit is to conserve its profitability, the management of The Lensbury have the challenging task of providing a top class service for business, sport and family. The architect's task was to reflect and enhance this ambition with a spatial concept that made the most of the rolling views but enhanced the comfort of the Clubhouse and Hotel whilst serving business in the Conference Centre. This led to an eclectic solution that combined Afghan rugs with minimalist modernism and displays of famous tennis rackets that nevertheless hangs together in an enjoyable way.

The complex continues to host major national squads in rugby, football, cricket, tennis and athletics whilst maintaining a commercial offering for corporates and external celebratory functions such as weddings.

RIBA Chartered Practice with particular interest in:

- Industrial and Commercial
- 
- 
- 
- Sport and Leisure
- 
- 
- Interiors
- 





# EASTERN CORPORATION LTD

- Refurbishments and Renovations to the highest modern standards
- Home Extensions to meet exacting family requirements
- Bespoke loft conversions and fit outs

46 GREENWAY, SOUTHGATE,  
LONDON N14 6NS

**TEL:** 0208 350 6943  
**MOB:** 07947 360 699

**EMAIL:** tombandii@gmail.com

## Play it safe with the CFA!



Flooring is a major element in most contracts. Architects, Specifiers and Main Contractors require quality of service, installation support and guaranteed results, all of which CFA members can provide.

CFA members include contractors, manufacturers, distributors and consultants and are here to make your project run as smoothly as possible.

All members are established businesses, are aware of current British, EU and International Standards and the latest technical information and are provided with business support and access to high quality training through our training organisation FITA, a joint venture between the CFA and NICF.

**Call, email or visit us online to source a CFA member for your next flooring project.**

Visit **www.cfa.org.uk**  
or call **0115 941 1126**



The Contract Flooring Association 4c St Mary's Place,  
The Lace Market, Nottingham NG1 1PH. Fax: 0115 941 2238





# Wombat's, London E1 8LL

## ANDREW MULROY ARCHITECTS LTD

8 Deane House Studios, Greenwood Place,  
London NW5 1LB

T 020 7267 5123

mail@mulroy.info

[www.mulroy.info](http://www.mulroy.info)

Contact **Andrew Mulroy**

Client **JMS Estates Ltd**

Main Contractor **Eastern Corporation Ltd** p54

Photographer **Alan Williams**

Wombat's is a popular new youth hostel on the edge of the City of London. An extensive refurbishment has brought additional space, a contemporary new identity and excellent new facilities to the building, which began life as a 19th century seaman's mission and was more recently used as a homeless shelter. The tradition of hospitality continues on the site thanks to a refurbishment that banishes any echoes of the stereotypical hostel environment. The building has been upgraded and surviving architectural features – both Victorian and Modern – retained. Key features include a large vaulted cellar which houses a stylish café and bar, where restored and cleaned brick vaults provide a rich textured backdrop. Imaginatively designed lighting, and bespoke and vintage furniture create a warm and contemporary social space in this area, which has access to a refurbished external courtyard. In the 1950s block the simple yet elegant central staircase is now an attractive feature: the restored balustrade rises through the building and elements such as glazed bricks to landing windows have been retained.



RIBA Chartered Practice with particular interest in:

- 
- 
- Education
- 
- Sport and Leisure
- 
- Conservation
- Interiors
- Houses and Housing







**Evergreen Building**  
0800 458 2648  
[www.evergreenbuilding.co.uk](http://www.evergreenbuilding.co.uk)

Working in the construction and groundworks industry across East Anglia & London.

•Healthcare •Groundworks •Commercial Works  
•Refurbishment •New Builds & Extensions • Domestic Works



Resource  
Heating  
& Plumbing



Evergreen  
Groundworks



Compass  
Safety  
Management



**You've got enough on your hands.**  
**You can trust Wilo.**





The Wilo-Yonos MAXO range combines power and simplicity with pioneering high-efficiency motor technology. Add the Wilo-Plug for easy, no-fuss installation. You can trust Wilo.

- + LED display for delivery head & fault codes
- + Control range from 0.5m set delivery head
- + Maximum efficiency thanks to ECM technology
- + Collective fault signal ensures system availability

For more information visit [www.wilo.co.uk](http://www.wilo.co.uk) or call 01283 523000



ErP  
READY

APPLIES TO EUROPEAN DIRECTIVE FOR ENERGY RELATED PRODUCTS

Pioneering for You





## FROST ARCHITECTS

Studio 305, The Lightbulb, 1 Filament Walk,  
Wandsworth SW18 4GQ

T 020 7183 8345

admin@frostarchitects.com

[www.frostarchitects.com](http://www.frostarchitects.com)

Contact **Daniel Frost**

## Client **Workspace**

Main Contractor **Evergreen Building Ltd** p58

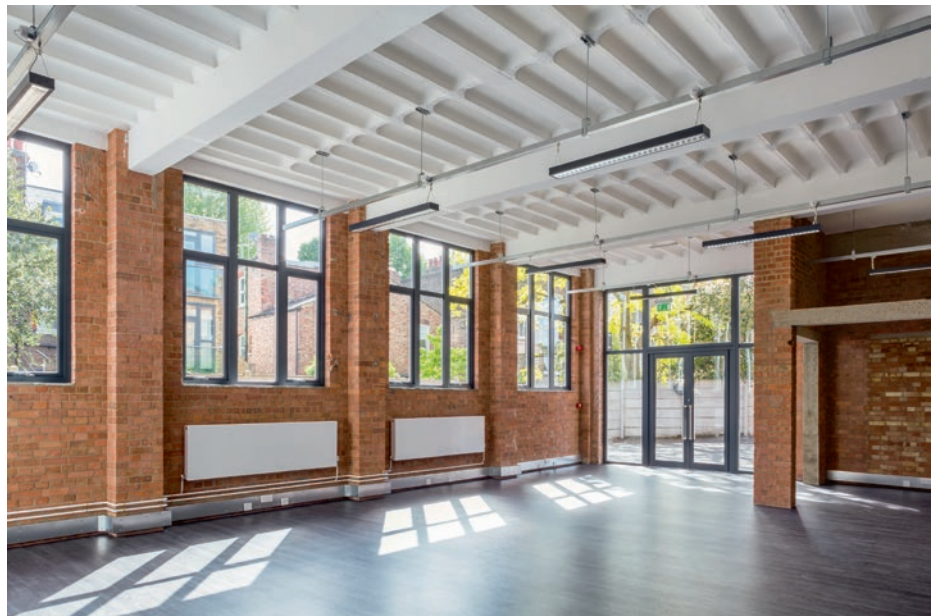
Photographer **Jocelyn Low**

Workspace asked Frost Architects to refurbish part of their building at The Lightbox, previously an old Bush radio factory. Having already completed several phases of development and refurbishment, the remaining space yet to be upgraded was an old snooker club and informal parking area. Frost Architects created 10,580 sq ft of lettable office space and a flexible break-out area with soft seating and tables for informal working, as part of the Club Workspace membership. A new toilet & shower core with tea point services the space.

The brief was to create an intimate atmosphere with low lighting and finishes that reflect the industrial nature of the building. A raised seating area provides separate booths which can be used as work space, meetings or for break-out. A large wall mounted TV with AV and IT capability facilitates events and presentations. The finishes palette includes sand-blasted brick, exposed galvanised services and distressed timber cladding. The lighting design provides varying effects with large wire frame fittings, industrial pendants and LED accent lighting. The tea point servery has been painted pink and then clad in black timber battens, giving an ever-changing glimpse of colour as you move around the space. A playful approach has also been taken with the graphics for both the toilet signage and meeting room imagery.

## RIBA Chartered Practice with particular interest in:

- Industrial and Commercial
- 
- 
- 
- Sport and Leisure
- 
- 
- Interiors
- Houses and Housing





**SPE TILE** **GRIP**

PRESENTS

**Clean-Air-Ceramics**  
HT  
long term guarantee  
AGROB BUCHTAL

BY **DEUTSCHE STEINZEUG** **AGROB BUCHTAL**

SpecTile are the UK's leading technical supplier of high quality ceramic and porcelain tiles to the Architectural and Design Industry  
Our Free Services include: AutoCad Layouts / Specification Writing / Anti Slip & General Maintenance Guidance / Sample Boards

Please Contact us for Assistance: Tel: 01270 256666  
Email: sales@spectile.co.uk / Web: www.spectile.co.uk

# DilwynLear

Architectural joinery & cabinet makers

- Firedoorsets • Fitted furniture • Corian fabricators
- Trespa fabricators • Bespoke joinery

Unit 2A, Adelaide Street, Newport NP20 5NF  
TEL 01633 376478 M 07837 431978  
E enquiries@dilwynlear.com W www.dilwynlear.com

## Polyurethane Spray Foam Insulation

### Websters Insulation Ltd

Leading Installers in UK

The most effective form of insulation available today

Ideal for insulating & weatherproofing old & new buildings, "Change of use Buildings" e.g. workshops, barns & loft conversions etc.  
Continuous membrane, air tightness reduces air leakage and saves energy  
Adheres to almost all surfaces.  
Stops condensation.  
Contains THE most efficient insulating properties.  
Exceptional alternative to dry lining, and new roof.  
Prevents slipping tiles/slates. Eliminates frozen pipes.  
Insulates and reduces fuel bills. Building Society approved.  
Saves energy and CO<sub>2</sub> emissions

Also: "Hard to Treat" Cavities using BBA materials and Random Stone

BRITISH URETHAN E FOAM CONTRACTOR S ASSOCIATION BUFCFA B.B.A.

Tel: (01405) 812682 Fax: (01405) 817201  
E-Mail: info@webstersinsulation.com Web Site: www.webstersinsulation.com  
CROW TREE FARM, THORNE LEVELS DONCASTER SOUTH YORKSHIRE DN8 5TF

## FEATURE

ARCHITECTURAL FABRICATIONS  
T 01323 520404

Leading Supplier and Installer of Aluminium Glazing Systems in the South East

**WINDOWS**

- Aluminium
- Aluminium-Timber Composite
- PVCu
- Steel Fire Rated

**DOORS**

- Aluminium
- Aluminium-Timber Composite
- PVCu
- Steel Fire Rated

**AUTOMATIC ENTRANCE DOORS**

**CURTAIN WALLING**

- Aluminium
- Aluminium-Timber Composite

**SHOP FRONTS**

**CONSERVATORIES**

**GLAZED ROOFS**

**SOLAR SHADING / BRISE SOLEIL**

**CANOPIES**

- Steel
- Aluminium

New Improved Website  
[feature-fabrications.co.uk](http://feature-fabrications.co.uk)

## STAGE systems

Dedicated to staging

Call us on: (01509) 611021  
Email us: info@stagesystems.co.uk  
Visit our Website: stagesystems.co.uk

### Stage the Perfect Performance

- Stage the Perfect Performance
- Portable and flexible stage systems
- Create versatile platform layouts
- Modular design, flat or multi-height
- Quick and easy to build and dismantle
- Stores neatly on wheeled trolleys
- Accessories include carpet, skirting, steps and handrails

Product Brochures and Case Studies are available to download  
Request a free demonstration and quote



# Redcar and Cleveland Leisure and Community Heart, Redcar TS10 1TD

## +3 ARCHITECTURE LTD

Block A Scottish Life House, Archbold Terrace,  
Newcastle upon Tyne, Tyne and Wear NE2 1DB  
T 0191 281 7700  
info@plus3.co.uk  
[www.plus3.co.uk](http://www.plus3.co.uk)  
Contact **Simon Dunstan**

Client **Redcar and Cleveland Borough Council**  
Main Contractor **Willmott Dixon**  
Stage Systems **Stage Systems Ltd p68**  
Tile Supplier **Spectile Ltd p68**  
Photographer **Steve Mayes**

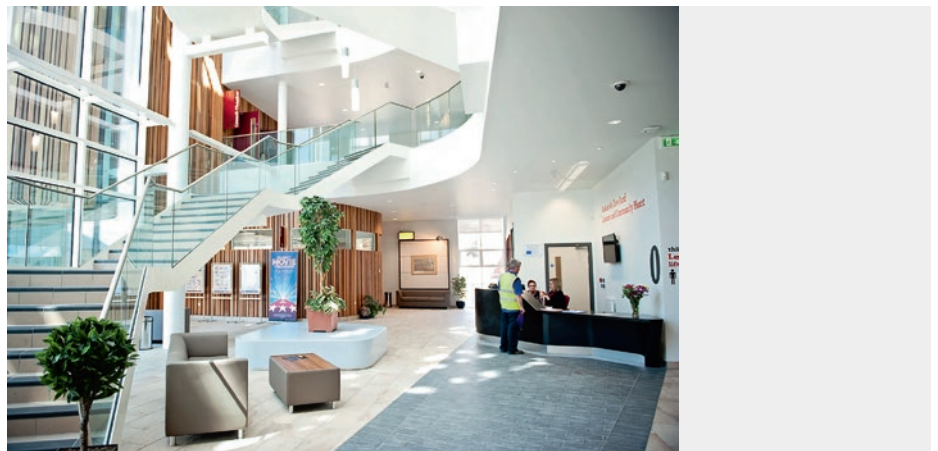
+3 Architecture working in collaboration with AFLS+P Architects, were commissioned by the Local Authority to design and deliver the new, flagship £31M Leisure and Community Heart project. Working alongside Deloitte, Buro Happold, AECOM and OOBE the scheme was won in competition and is the largest regeneration project in Redcar's recent history.

The design combines a new leisure centre, civic facilities, a business centre, car parking and major public realm improvements into a single, comprehensive redevelopment that knits together a previously fragmented part of the town. The project has consolidated a range of council functions into a dedicated civic hub alongside a state of the art leisure centre that contains three pools and an innovative flow-rider. In addition a new business centre provides accommodation to support fledgling businesses in the region. These functions are located around a new civic square which itself is tied back into the surrounding context via a tree-lined boulevard.

The scheme was procured under the SCAPE framework with Willmott Dixon, and officially opened to the public in April 2014.

### RIBA Chartered Practice with particular interest in:

- Industrial and Commercial
- 
- Education
- Government and Public
- Sport and Leisure
- 
- 
- Interiors
- 





# K REND

Silicone Coloured Renders



K Rend proud to feature on RIBA's award winning Dalmunach Distillery



[www.K-Rend.co.uk](http://www.K-Rend.co.uk)



# Dalmunach Distillery, Moray AB38 7QP

## ARCHIAL NORR

5 Longman Road, Inverness IV1 1RY  
T 01463 729 307 F 01463 225 284  
info@archialnorr.com  
[www.archialnorr.com](http://www.archialnorr.com)  
Contact **Mark Fresson/Greg Duncan**

Client **Chivas Brothers**

Main Contractor **Robertson Construction**

Rendering **Kilwaughter Chemical Co Ltd** [p72](#)

Photographer **Paul Zanre**



This new distillery was commissioned to replace the former Imperial Distillery on a site nestled on the banks of the River Spey. Built using the latest innovations and environmental expertise such as heat recovery technology, the distillery is capable of producing up to 10m litres of spirit per year.

The distillery's design sets out to create a memorable building with a strong sense of place whilst remaining honest to the aesthetic of a crisp modern industrial building. The distillery plan has been inspired by the shape of a sheaf of barley reflecting the core ingredient of single malt whisky.

The building is set over two levels with the main production level at the first floor. The plan expresses the three key whisky making processes of mashing, fermentation and distilling into three distinct plan elements reflected in the massing and the wheat sheaf concept. In a departure from distillery traditions, the stills have been positioned in a circular design that provides a unique aesthetic for the future.



## RIBA Chartered Practice with particular interest in:

- Industrial and Commercial
- Health
- Education
- Government and Public
- Sport and Leisure
- Retail
- Conservation
- Interiors
- Housing

# TTM

01438 750085

www.ttm-ltd.co.uk  
traffic@ttm-ltd.co.uk

TTM are proud to be installers of vehicle and pedestrian access control at **Bletchley Park**

TTM provide installation & maintenance for:

- Automatic car park barriers
- Automatic sliding swing gates
- Automatic rising bollards
- Door access control
- Card readers & keypads
- Door entry systems
- Audio & video intercom
- Turnstiles & powered doors



## ECOSA

Ecological Survey & Assessment Limited

### High Quality Surveys – Clear Ecological Advice – Innovative Solutions

ECOSA provide clear and practical advice and develop innovative solutions to ecological constraints.

ECOSA work on private and public sector projects from earth houses to large housing developments, on refurbishment and new build of hospitals, schools and public spaces.

ECOSA provide a complete range of ecological services, from surveys to support planning applications to ongoing management including:

- Protected Species and Biodiversity Assessments
- Ecological Impact Assessment (EclA)
- EPSM Licence Applications
- BREEAM Standard and CSH
- Biodiversity Solutions
- Conservation Management Plans
- Habitat Management Plans



02380 261065 – info@ecosaco.uk – www.ecosaco.uk



## Platform Lifts

Our range of platform lifts includes the **Inva StairRiser** (left) - a high quality wheelchair stair lift for internal or external use on straight or curved stairways. We also offer the **MC2000** (right) a high quality enclosed platform lift with a unique chain drive, and the option of glazing on all 4 shaft sides.



### INVALIDFTS

The Platform Lift Experts

Tel: 0845 4682543  
Web: www.invalidfts.com

## Parapan®

high gloss acrylic



Extremely versatile and increasingly being specified for prestigious installations in retail and commercial sectors.

- 24 colours
- UV stable
- Hygienic & stain resistant
- 18mm & 4mm solid acrylic
- Cut to bespoke sizes
- Thermoformed to any radius
- Durable
- Waterproof



New brochure now available

Tel: 01482 440680  
info@parapan.co.uk  
www.parapan.co.uk



# The Restoration of Bletchley Park Phase I, Milton Keynes MK3 6EB

## KENNEDY O'CALLAGHAN ARCHITECTS

70 Cowcross Street, London EC1M 6EJ

T 020 7253 6600

info@KOCArchitects.com

www.KOCArchitects.com

Contact **Janie Price**

Client **Bletchley Park Trust**

Main Contractor **Fairhurst Ward Abbotts**

**Restoration Ltd**

Gates & Automation **TTM Consultancy Services**

**Ltd p78**

Photographer **Shaun Armstrong of Mubsta**



Project Neptune was an £8 million Heritage Lottery Fund project to transform the wartime site of Bletchley Park into a world class museum, heritage site and education centre. Kennedy O'Callaghan Architects prepared a masterplan in 2010 and works started on site in 2013. Bletchley Park re-launched in June 2014, having successfully completed the project on time and on budget and having kept the site open for visitors throughout the work.

The key outcomes of Project Neptune include:

- Saving buildings at risk - the most fragile buildings on site have been saved from their advanced state of decay and painstakingly conserved
- Extensive asbestos was removed
- Wartime colours were reinstated
- New services enhance the wartime character of the buildings
- Improved visitor facilities to cope with peak demand of 2,500 visitors per day
- Landscaping has been reinstated and parking removed from the parkland, with increased safety and pedestrian movement around the site
- Greater access for visitors with mobility, eyesight or hearing impairment
- Accessible interpretation and a new learning programme
- Community involvement and an increase in volunteers, apprentices and staff



RIBA Chartered Practice with particular interest in:

- Industrial and Commercial
- 
- 
- Government and Public
- Sport and Leisure
- Retail
- Conservation
- Interiors
- Houses and Housing



## Contract Furniture Designers & Manufacturers



### Geometric Furniture Ltd

Geometric House, Lark Hill, Townley Street,  
Middleton M24 1AT

T: 0161 653 2233 F: 0161 653 2299

sales@geometric-furniture.co.uk

www.geometric-furniture.co.uk



# FRESH AIR, FRESH MINDS

Natural Lighting & Natural Ventilation by Monodraught

Want to know more?

Find out how Monodraught systems can help you  
achieve healthier, cost effective and more  
productive environments



We do the **DESIGN**, we **MANUFACTURE** the product,

we **INSTALL** it and we **MAINTAIN** it



Alderman Knight School -  
Windcatcher® and Cool-phase® systems



## Monodraught®

engineering delivered. *naturally*

www.monodraught.com

info@monodraught.com

+44 1494 897700





## AINSLEY GOMMON ARCHITECTS

1 Price Street, Birkenhead, Merseyside CH41 6JN

T 0151 647 5511 F 0151 666 2195

Birkenhead@ainsleygommonarchitects.co.uk

[www.ainsleygommonarchitects.co.uk](http://www.ainsleygommonarchitects.co.uk)

Contact **Maria Killick**

Client **Paul Cardwell**

(General Manager, Capital Reinforcing)

Main Contractor **Capital Reinforcing**

Photographers **Tom McEvoy** (external)

**Alf Plant** (internal)

Ainsley Gommon was initially appointed to carry out a master-plan for the former oleochemical site. The approved scheme addresses various complex site constraints and proposes zoning of the site to create a balanced mixed use development that is predominantly light industrial and offices, but also supports the adjacent residential Conservation Area of Bromborough Pool Village. Capital Reinforcing required new factory and administrative facilities. They specialise in the cutting and bending of steel reinforcing bar for the building and civil engineering industries whilst also producing large quantities of bar and mesh for the precast industry. The new building has enabled Capital Reinforcing to relocate from their previous office to the new and improved facilities at Pool Lane.

The industrial unit consists of a 2915 m<sup>2</sup> factory for processing steel reinforcement accompanied by a 360 m<sup>2</sup> office building housing the administration, account and sales area of the company along with toilet, shower and kitchen facilities for the factory workers. Facilities for both able and disabled workers are provided, including the heavy goods vehicle drivers serving the site. The remaining area of the site will be used for storage of materials and parking for staff.

### RIBA Chartered Practice with particular interest in:

- Industrial and Commercial
- 
- Education
- Government and Public
- Sport and Leisure
- Retail
- Conservation
- Interiors
- Housing



## Bath &amp; NE Somerset

## BATH

**AARON EVANS ARCHITECTS LTD**

3 Gay Street, Bath BA1 2PH  
 T 01225 466 234  
 office@aaronevans.com  
 www.aaronevans.com  
 Contact: Kevin Murphy

**BATTERHAM MATTHEWS DESIGN LTD**

1 Tollbridge Studios, Tollbridge Road, Bath, Somerset BA1 7DE  
 T 01225 851122 F 01225 851155  
 studio@bmd-architects.com  
 www.bmd-architects.com  
 Contact: John St Leger

**BBA ARCHITECTS & PLANNERS**

Henrietta Mews, Bath, Somerset BA2 6LR  
 T 01225 460427 F 01225 482022  
 mail@bba-architects.co.uk  
 www.bba-architects.co.uk  
 Contact: Matthew Bollen

**CARTER HUGHES DAVIES**

14 Queen Square, Bath, Somerset BA1 2HN  
 T 01225 330716  
 carterhdavies@globalnet.co.uk  
 www.c-h-c-l.co.uk  
 Contact: Paul Davies

**CASA ARCHITECTS LTD**

Bath Brewery, Toll Bridge Road, Batheaston, Bath, Somerset BA1 7DE  
 T 01225 851871 F 01225 851884  
 studio@casa-architects.com  
 www.casa-architects.com  
 Contact: Ian Walker

**CHEDBURN DUDLEY LTD**

Limpley Mill, Lower Stoke, Limpley Stoke, Bath, Somerset BA2 7FJ  
 T 01225 859999 F 01225 723990  
 chedburn@chedburn.com  
 www.chedburn.com  
 Contact: George Chedburn

**CHRIS DYSON ARCHITECTS LLP BATH**

Lower Ground Floor Offices, 7 Pierrepont Street, Bath BA1 1LB  
 T 01225 314 074  
 harry.whittaker@chrisdyson.co.uk  
 http://www.chrisdyson.co.uk/  
 Contact: Andrew Whittaker

**DALLEY SMITH ARCHITECTURE**

Meadow Farm, Meadow Lane, Bathampton, Bath, Somerset BA2 6SL  
 T 01225 460 395 F 01225 314 389  
 stephen@dalley-smith.co.uk  
 Contact: Stephen Dalley Smith

**DAVID BRAIN PARTNERSHIP**

Ralph Allen's Town House, 2 Church Street, Bath, Somerset BA1 1NL  
 T 01225 445055  
 mail@dbpbath.co.uk  
 www.dbpbath.co.uk  
 Contact: Craig Underdown

**DESIGNSCAPE ARCHITECTS LTD**

Toll Bridge Road, Batheaston, Bath, Somerset BA1 7DE  
 T 01225 858 500 F 01225 858 758  
 enquiries@dscope.co.uk  
 www.dscope.co.uk  
 Contact: Christopher Mackenzie

**DKA**

The Malthouse, 17-20 Sydney Buildings, Bath, Avon BA2 6BZ  
 T 01225 465 701 F 01225 465 714  
 info@dka.co.uk  
 www.dka.co.uk  
 Contact: David Kent

**DONALD INSALL ASSOCIATES LTD**

1 Harington Place, Bath BA1 1HF  
 T 01225 469898  
 bath@insall-architects.co.uk  
 www.insall-architects.co.uk  
 Contact: Robert Dunton

**ESMOND MURRAY ARCHITECTS LIMITED**

21 Van Diemens Lane, Lansdown, Bath, Somerset BA1 5TW  
 T 01225 447165 F 01225 311611  
 es@ema.gb.com  
 www.esmondmurrayarchitects.com  
 Contact: Esmond Murray

**FEILDEN CLEGG BRADLEY STUDIOS LLP**

Bath Brewery, Toll Bridge Road, Batheaston, Bath, Somerset BA1 7DE  
 T 01225 852545 F 01225 852528  
 bath@fcbstudios.com  
 www.fcbstudios.com  
 Contact: Peter Clegg

**HETREED ROSS ARCHITECTS LTD**

Bath Brewery, Toll Bridge Road, Batheaston, Bath, Somerset BA1 7DE  
 T 01225 851860 F 01225 851884  
 jh@hetreedross.com  
 www.hetreedross.com  
 Contact: Jonathan Hetreed

**HPH ARCHITECTS LTD**

7 Sydney Wharf, Bath BA2 4EF  
 T 01225 471773 F 01225 471781  
 mail@hpharchitects.co.uk  
 www.hpharchitects.co.uk  
 Contact: Neil Pollard

**JAMES GRAYLEY ARCHITECTS**

2 Wood Street, Queen Square, Bath BA1 2JQ  
 T 020 7060 3795  
 studio@jamesgrayley.com  
 www.jamesgrayley.com  
 Contact: James Grayley

**MITCHELL TAYLOR WORKSHOP**

Wharf Studio, Widcombe Hill, Bath, Somerset BA2 6AA  
 T 01225 789033 F 01225 789755  
 rm@mitchelltaylorworkshop.co.uk  
 www.mitchelltaylorworkshop.co.uk  
 Contact: Robert Mitchell

**MJW ARCHITECTS**

The Old Chapel, Mendip Road, Stoke St. Michael, Bath, Somerset BA3 5JU  
 T 01749 840180 F 01749 841380  
 info@mjwarchitects.com  
 www.mjwarchitects.com  
 Contact: Michael Williams

**NASH PARTNERSHIP LLP**

23a Sydney Buildings, Bath, Avon BA2 6BZ  
 T 01225 442 424 F 01225 442 484  
 mail@nashpartnership.com  
 www.nashpartnership.com  
 Contact: Edward Nash



## NICHOLAS MAGNIAC ASSOCIATES

1 Malvern Villas, Bath, Somerset BA1 5JS  
T 01225 443219 F 01225 443230  
nicholasmagniacassoc@hotmail.com  
Contact: Nicholas Magniac

## NICK SHIPP ARCHITECTS LIMITED

40 Belvedere, Bath BA1 5HR  
T 01225 312655  
design@nickshipp.com  
[www.nickshipp.com](http://www.nickshipp.com)  
Contact: Nicholas Shipp

## SIMON MORRAY-JONES ARCHITECTS LTD

21 Milsom Street, Bath, Somerset BA1 1DE  
T 01225 787900 F 01225 787901  
sm-j@sm-j.com  
[www.sm-j.com](http://www.sm-j.com)  
Contact: Simon Morray-Jones

## SRA ARCHITECTS LLP

The Ice House, 124 Walcot Street, Bath, Somerset BA1 5BG  
T 01225 827444 F 01225 827445  
jprich@stubbstrich.com  
[www.sra-architects.co.uk](http://www.sra-architects.co.uk)  
Contact: John Rich

## STRIDE TREGLOWN TEKUS

St Georges Lodge, 33 Oldfield Road, Bath, Somerset BA2 3NE  
T 01225 466173 F 01225 428492  
bath@stridetreglown.com  
[www.stridetreglown.com](http://www.stridetreglown.com)  
Contact: Philip Fawcner-Corbett

## Bedfordshire

### BEDFORD

#### JOHN WILLCOCK ARCHITECTS

The Old Five Bells, High Street, Swineshead, Bedford,  
Bedfordshire MK44 2AA  
T 01234 709758  
johnwillcock@btconnect.com  
[www.johnwillcockarchitects.co.uk](http://www.johnwillcockarchitects.co.uk)  
Contact: John Willcock

#### MK40 ARCHITECTS

The Courtyard, 30a Mill Street, Bedford, Bedfordshire MK40 3HD  
T 01234 330646  
sdevonshire@mk40architects.com  
[www.mk40architects.com](http://www.mk40architects.com)  
Contact: Stuart Devonshire

#### NICOLAS TYE ARCHITECTS LTD

The Long Barn Studio, Limbersey Lane, Maulden, Bedford,  
Bedfordshire MK45 2EA  
T 01525 406677 F 01525 406688  
info@nicolastyearchitects.co.uk  
[www.nicolastyearchitects.com](http://www.nicolastyearchitects.com)  
Contact: Nicolas Tye

#### THE VICTOR FARRAR PARTNERSHIP

The Dreys, 5 Castle Barns, Coplowe Lane, Bletsoe,  
Bedfordshire MK44 1TL  
T 01234 353012  
lbubbins@btconnect.com  
[www.architects4you.co.uk](http://www.architects4you.co.uk)  
Contact: Laurane Bubbins



#### WOODS HARDWICK LTD

17 Goldington Road, Bedford, Bedfordshire MK40 3NH  
T 01234 268862 F 01234 353034  
mail@woodshardwick.com  
[www.woodshardwick.com](http://www.woodshardwick.com)  
Contact: Mark Appleyard

Established for over 50 years Woods Hardwick is a leading multi-disciplinary practice based in Bedford with trained professionals across its commercial, residential and engineering divisions with expertise in commercial and residential architecture, civil engineering, master planning, town planning, urban design, land surveying and BREEAM consultancy. This integrated service capability meets a growing market need for greater efficiency in terms of coordination, time and cost and draws upon a depth of resources capable of designing and implementing projects from single residential units to large scale mixed use commercial developments.

### BIGGLESWADE

#### LEVITT PARTNERSHIP LIMITED

57 London Road, Biggleswade, Bedfordshire SG18 8EU  
T 01767 312 808 F 01767 313 400  
harry.hughes@levitt-partnership.co.uk  
[www.levitt-partnership.co.uk](http://www.levitt-partnership.co.uk)  
Contact: Harry Hughes

### LUTON

#### CHAMBERS GOODWIN AND PARTNERS

The Covert, Green Acres, Lilley, Luton LU2 8LS  
T 03301 222150  
peter.goodwin@cgparchitects.com  
[www.cgparchitects.com](http://www.cgparchitects.com)  
Contact: Peter Goodwin

#### THE LOUIS DE SOISSONS PARTNERSHIP

Shoot Lodge, Wandon Green, Lawrence End, Luton,  
Bedfordshire LU2 8PH  
T 01438 833003 F 01438 833004  
architect@louisdesoissons.co.uk  
[www.louisdesoissons.co.uk](http://www.louisdesoissons.co.uk)  
Contact: Gerald Long

## Berkshire

### ASCOT

#### ALLEN ASSOCIATES

The Hall, Priory Road, Sunningdale, Ascot, Berkshire SL5 9RQ  
T 01344 873 784 F 01344 870 134  
architects@allenassociates.co.uk  
Contact: Scott Allen

#### RJHA LTD

Studio 201, Berkshire House, 39-51 High Street, Ascot SL5 7HY  
T 01344 637 915  
email@rjha.co.uk  
[www.rjha.co.uk](http://www.rjha.co.uk)  
Contact: Raymond Holden



## A

**Architect**

John McAslan & Partners	181
Kay Elliott	153
O'Mahony Pike Architects	197
Woods Hardwick Ltd	135

**Access Control**

TTM Consultancy Services Ltd	78
------------------------------	----

**Adhesives - Floor Covering**

Uzin Ltd	IFC
----------	-----

**Aluminium Windows & Doors**

Velfac Ltd	47
------------	----

**Architectural Lighting Specialist**

ErosPhos	280
----------	-----

**Architectural Metalwork**

Feature Architectural Fabrications	68
------------------------------------	----

## B

**Barrier Systems**

TTM Consultancy Services Ltd	78
------------------------------	----

**Barriers and Bollards**

Moravia (UK) Ltd	92
------------------	----

**Bathroom Fittings**

Dornbracht UK Ltd	54
-------------------	----

**Bespoke Glazing Solutions**

Masterglazing	92
---------------	----

**Building Contractors**

Eastern Corporation	54
Evergreen Building Ltd	58
WFC Contractors Ltd	50

**Building Products Specialists**

C-Tec Building Solutions	286
--------------------------	-----

## C

**Ceilings**

Saint-Gobain Ltd	IBC
------------------	-----

**Commercial Plumbing Products**

Marley Plumbing & Drainage	96
----------------------------	----

## E

**Ecological Consultants**

Ecological Survey & Assessment Ltd T/A ECOSA	78
--	----

## F

**Fabrications Architectural**

Feature Architectural Fabrications	68
------------------------------------	----

**Fittings - Bathroom**

Dornbracht UK Ltd	54
-------------------	----

**Floor Finishes**

Uzin Ltd	IFC
----------	-----

**Flooring**

Contract Flooring Association Ltd	54
-----------------------------------	----

**Folding/Sliding Doors**

Feature Architectural Fabrications	68
------------------------------------	----

**Furniture Manufacturers**

Geometric Furniture Ltd	86
-------------------------	----

## G

**Garage and Industrial Doors**

Hormann UK Ltd	281
----------------	-----

## H

**Heating and Ventilation Systems**

Monodraught Ltd	86
-----------------	----

**Hinges**

Cooke Brothers	282
----------------	-----

## I

**Insulation**

Websters Insulation Ltd	68
-------------------------	----

**Ironmongery**

Allegion Uk Ltd	252
-----------------	-----

## J

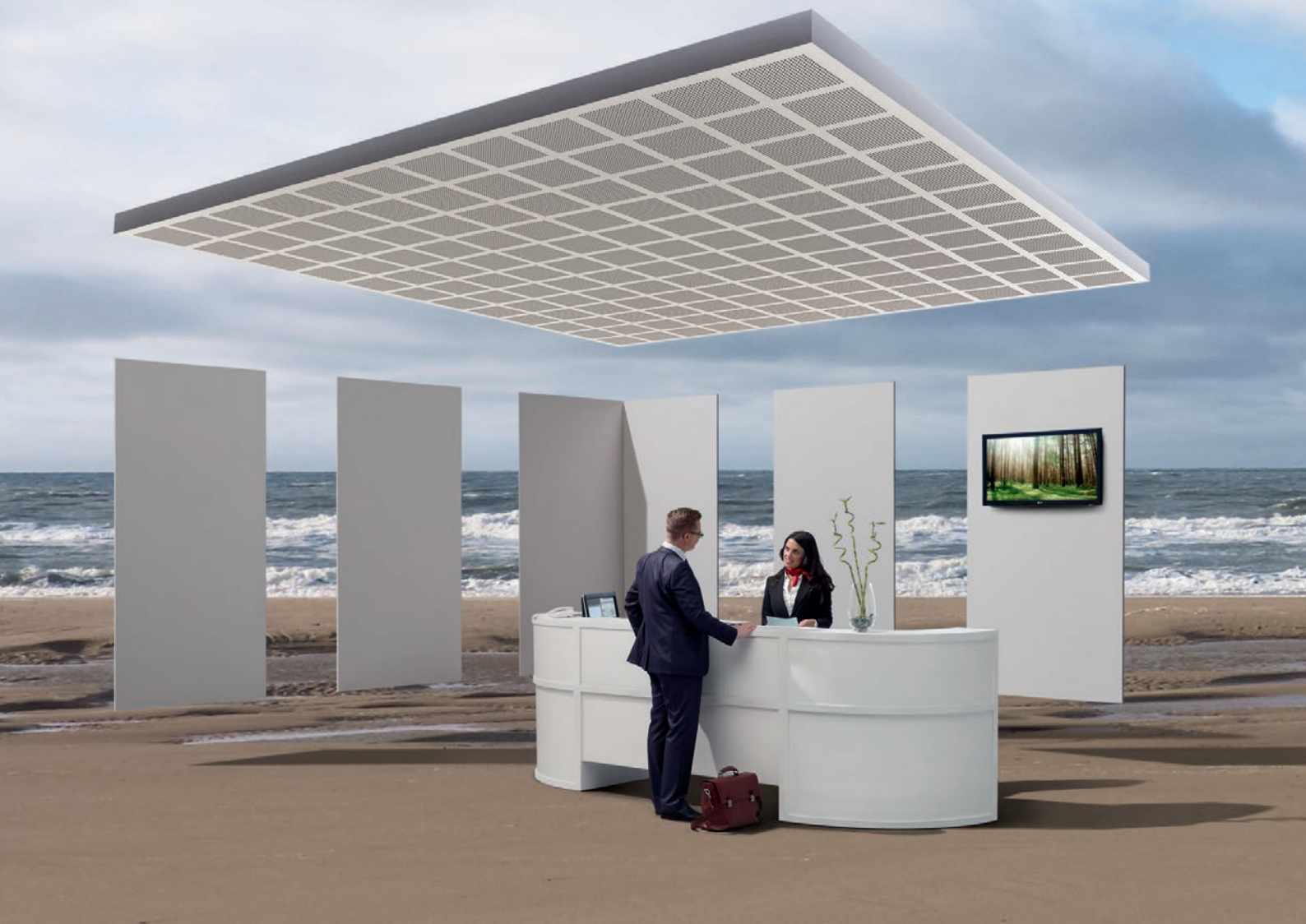
**Joinery**

Dilwyn Lear Ltd	68
-----------------	----



Indoor air quality

# ACTIVair technology: Making indoor spaces healthier



We spend up to 90% of our time indoors, in schools, offices, hospitals and our home. We take it for granted that the air we breathe is clean and pollutant-free. Yet impurities found in both our working and living spaces can cause health problems and a reduction in our general well-being. Pollutants called VOCs - volatile organic compounds - are naturally emitted into our homes, offices and schools by people, pets, cleaning products as well as furniture, carpets, paints and varnishes.

Gyproc Duraline, Gyproc SoundBloc and Rigidur H plasterboards, Thistle PureFinish plaster and Gyptone ceiling products are all available with **ACTIVair** technology. This converts up to 70% of the formaldehyde concentration in the indoor air into harmless, inert compounds for at least 50 years. Ensuring the indoor air is as clean and fresh as the great outdoors.

For more information call us on **0844 800 1991** or visit **[www.british-gypsum.com/activair](http://www.british-gypsum.com/activair)**



# digital marketing solutions at your fingertips



Excel  
DIGITAL



e-mail marketing



web development



app development

design - creative - true digital marketing solutions

**call us on 0161 661 4172**

**excel**  
DIGITAL

Excel Digital is a division of Excel Publishing Company Limited  
Excel Publishing Co Ltd, 6th Floor, Manchester One, 53 Portland Street Manchester M1 3LD | Tel: 0161 236 2782