

MINTEX®

BRAKING WITH TRADITION

Brake Pad and Brake Disc Fault Diagnosis

Technical information



Brake Pad and Brake Disc Fault Diagnosis



Brake pads

- Selecting the brake pad according to Mintex recommendation
- Replacement procedure (axlewise) according to the specific codes of practice in the fitting instructions
- Running-in behaviour according to the recommendations of the vehicle manufacturer/fitting instructions



Brake disc

- Clean functional surfaces
- Lateral run-out, parallelism, radial run-out and disc thickness variation according to Mintex recommendations
- Replacement procedure (axlewise) according to the recommendations of the vehicle manufacturer



Brake Caliper

- Clean, smoothly running guiding elements
- Operating elements (pistons, protective caps, springs, etc.) in undamaged operating condition



Wheels

- Balancing according to the guidelines of the vehicle manufacturer
- Fitting with the torques specified by the vehicle manufacturer and following the fitting instructions

Introduction

With few exceptions, disc brakes are used on the front axle of passenger cars. Depending on the load, disc or drum brakes are used on the rear axle. The following remarks are limited to the disc brake.

High mechanical and thermal stress exerted on the brake system

The pressure exerted on the brake pedal, supported by the system, acts as a tensioning force within the brake caliper that presses the brake pads onto the brake discs. As a result of the friction force created by this, the greater portion of the kinetic energy of the vehicle is converted to heat within a short time. The mechanical and thermal stresses acting on the brake disc and brake pads are very high. In extreme cases, the braking power occurring during deceleration can be many times the maximum engine power.

Essential requirements with regard to the brake system

The essential requirements placed on a brake system can be summarised as follows:

- Minimum stopping distance under all operating conditions
- Good brake comfort (no judder, no squealing, good pedal feel)
- Adequate service life of the wearing parts

As far as brake discs and brake pads as essential co-functioning elements for the braking procedure are concerned, this means:

- Friction stability over a very wide temperature range
- Low dependence of the coefficient of friction on the contact pressure, speed and environmental influences
- Good mechanical strength and resistance to deformation
- Wear status within the specified limit values
- Component tolerances within the specified limit values
- Adequate wear behaviour of the brake pads and brake discs

Brake discs and brake pads are co-functioning key safety elements. The requirements placed on them can only be met with components developed for/adapted to the vehicle concerned. Safety risks, as well as losses of comfort and a reduced service life, can be avoided by correct maintenance.

High mechanical and thermal stress exerted on the brake system

Essential requirements with regard to the brake system

Brake noises in motor vehicles

Due to drivers' increased quality consciousness, brake noises are accepted less and less. What causes these noises and how can they be counteracted? When braking, vibrations always occur due to dry friction, which, depending on the frequency, are described with a wide variety of terms.

In the low frequency range, they are referred to as, e.g., rubbing, buzzing or juddering and in the medium and high frequency range as squealing or wire brush.

In order to counteract these phenomena, TMD, Europe's leading brake pad manufacturer, has been carrying out intensive research for many years. At a very early phase of new vehicle development, the results contribute towards comfort optimisation.

Consequently, their intrinsic vibration behaviour and noise absorption properties are thoroughly tested when developing new brake pad materials. With the results achieved, the noise behaviour of new vehicles and their components are analysed and influenced on special noise test benches, in some cases, with complete prototype axle components and brakes. During this early development phase, changes can still be made to the brake caliper and pad contour.

At a later point in time, vehicle tests are then performed during which the intensity and frequency of any noises are determined. These tests includes endurance runs in various parts of the world, as well as assessment during a variety of street circuits and high-speed judder tests. In this context, it is of particular importance to determine which component vibrates at what frequency in order to be able to take targeted noise absorption measures. Fine adjustment can now be performed by small contour modifications such as grooves and/or chamfers. The compressibility of the brake pads can also be changed within the framework of the tolerance ranges.

Depending on the application, the wedge-shaped underlayer patented by TMD also contributes towards optimisation. In the ideal case, so-called secondary measures such as rubber varnish, adhesive foils, damping plates, counterweights, etc. can be dispensed with. Although these ancillary materials can contribute towards improvement, they also have an effect on the pedal feel, the wear volume and, naturally, the costs.

Consequently, in the case of a brake pad, a compromise must always be found between safety, comfort and economic efficiency.

In this context, the correct allocation of the different brake pad materials is just as important as the assessment of the overall condition of the complete brake system and the other corner module components such as suspension.

One must also be aware that each modification to the vehicle, such as wide tyres, changes to the tracking, lowering, etc., also considerably affects the noise and comfort behaviour of motor vehicles.



BRAKE PADS

Damage assessment of disc brake pads

Detachment of the friction material

- due to corrosion 8–9
- due to thermal destruction 10
- due to mechanical influences 10
- due to faulty production 11

Detachment of the friction material 12–13
from the backing plate

Use-related damage

- Surface cracks 14
- Edge break-offs 15
- Delamination/edge deterioration 16
- Faulty contact pattern 17–18

Fitting errors 19–23

Damage due to environmental influences 24

Production faults 25–26

Special fitting instructions 27



CONTENT

Damage assessment of brake discs

Brake judder	28
Thermal judder	28–29
Cold judder	30–32
Judder caused by static spots	33
Squeaking noise during braking	33
Further possible defects	34
Brake discs exhibit cracking	34
Brake discs are scored	35
Brake disc service life is too short	35
Summary and illustrations	36
Thermal judder	37
Cold judder	37
Static spots	38
Cracked brake discs	38
Scored brake disc	39
Completely worn brake pads	39
Corroded brake discs	40
Inner and outer friction rings have different thicknesses ..	40
Thickness variation in friction ring	41
Heavy underlying corrosion at the contact surface	41
Blowhole damage	42
Cracks in the area of the brake disc chamber	42
Contact and service	43
Notes	44–47



BRAKE PADS

Detachment of the friction material due to corrosion

Cause:

- Edge detachment due to the use of new brake pads on extremely worn brake discs
 - Inadequate spring force of the hold-down spring (off-centre travel)
 - Other mechanical overloading
 - Constant high thermal stress on the disc brake pads
-
- Friction material becomes porous (completely or in spots)
 - Friction material has become disconnected due to corrosion
 - Backing plate has obvious traces of corrosion
 - Adhesive residue
 - Underlayer and friction material visible on backing plate



► **Edge deterioration**



► **Heavy underlying corrosion**



BRAKE PADS

Detachment of the friction material due to corrosion



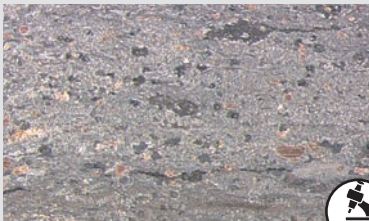
▶ No indication of excessive temperature load



▶ View: cross-section

Explanation:

Friction material is clearly visible. The graphite batch containing elastomers, as well as the friction carbon and aramid fibre, are still present up to directly under the friction layer.



▶ Clear traces of thermal stress



▶ View: cross-section

Explanation:

The graphite batch containing elastomers no longer exists and the friction carbon is now only present up to directly above the underlayer. The aramid fibre is still present under the friction layer (from approx. 4 mm onwards). Corrosion is visible below the underlayer.



BRAKE PADS

Detachment of the friction material due to thermal destruction

Explanation:

Disc brake pads have exceeded the highest permissible temperature for longer than 15–20 minutes.

During this time, constituents that contribute significantly towards stability are destroyed.



- ▶ Friction material decomposes, breaks off in some places and/or the underlayer and adhesive are damaged. Pad detaches completely; coating peels off. Partial colouring of the backing plate. Friction material has hardened, has a hard ring, reddish brown colouring of the friction material, white ash in some places.

due to mechanical influences

Explanation:

Disc brake pads have been dropped or fitted at a tilt or deformation due to extreme “wobbling” in the brake caliper.



The friction material detaches from the backing plate. Delamination occurs. Disc brake pads are new, separation above the adhesive/underlayer. Damage visible on the backing plate.



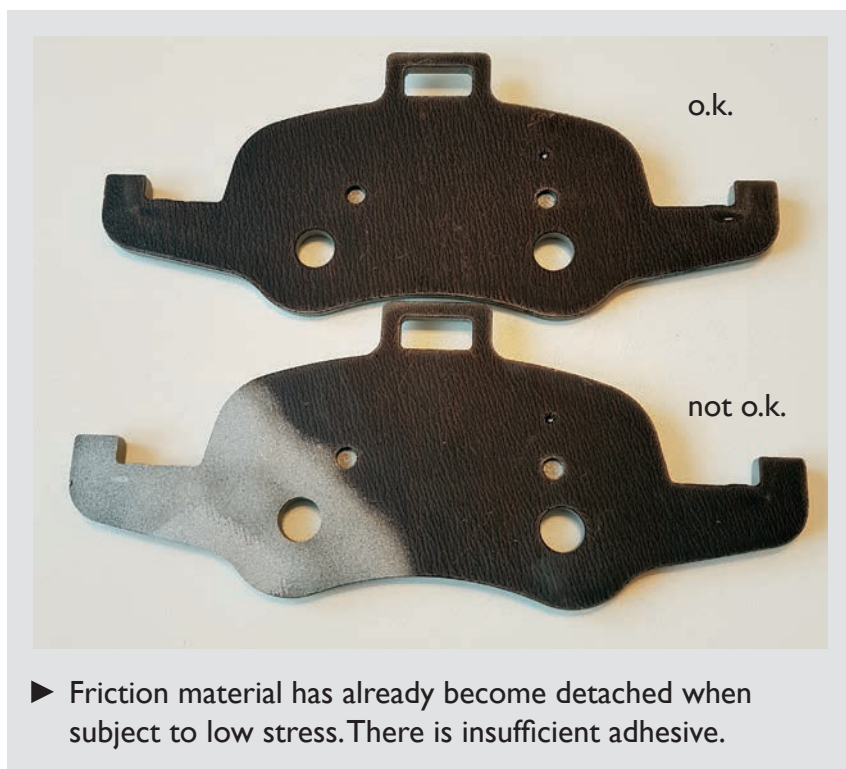
Damage as a result of bending stress visible on the backing plate.

Excessive “wobbling” of the backing plate within the brake caliper.



BRAKE PADS

Detachment of the friction material due to faulty production



Explanation:

- Backing plate smooth or underlayer and adhesive only partially visible.
- Unsatisfactory adhesion. Underlayer improperly distributed.



BRAKE PADS

Detachment of the friction material from the backing plate

Attention:
These faults often occur in combination.

Detachment due to	Cause
Corrosion	<ol style="list-style-type: none"> 1. Edge deterioration due to extremely worn brake disc; inadequate hold-down spring (off-centre travel) 2. Constant high thermal stress on the disc brake pads
Faulty production	Unsatisfactory adhesion Underlayer improperly distributed
Thermal destruction of adhesive, underlayer and friction material	Disc brake pads have exceeded the highest permissible temperature for longer than 15–20 minutes, during this time, constituents that contribute significantly towards stability, are destroyed.
Mechanical destruction	Disc brake pads have, e.g., been dropped Fitted with unnecessary force

BRAKE PADS



Effect	Distinguishing characteristic
Friction material becomes porous (completely or in spots), friction material detachment as a result of corrosion	Backing plate has obvious traces of corrosion, adhesive residue, underlayer and friction material visible on backing plate
Friction material already becomes detached when subject to low stress	Backing plate smooth or underlayer and adhesive only partially visible
Friction material decomposes, breaks off in some places and/or the underlayer and adhesive are damaged, pad detaches completely	Coating peels off, backing plate is coloured blue in some places, friction material has hardened, has a hard ring, reddish brown colouring of the friction material, white ash in some places
Friction material detaches from the backing plate, delamination occurs	Disc brake pads are new, separation above the adhesive/underlayer. Damage visible on the backing plate

Attention:

- Detachment can be due to various causes, only faulty production being within our area of influence and will, thus, be accepted as a complaint.
- Basically speaking, a brake pad first becomes hot, and then the pad is destroyed.
- A sheared-off brake pad is never the reason for a pad to become hot.



BRAKE PADS

Use-related damage Surface cracks

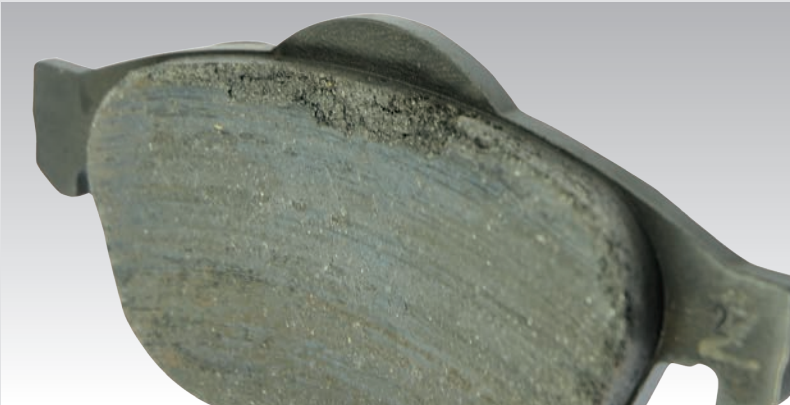


- ▶ Surface cracks can be ignored; they do not pose a safety risk. Even in the case of grooved brake pads, there is no disadvantage regarding pad stability.



BRAKE PADS

Use-related damage Edge break-offs



► Break-offs can be ignored; they do not pose a safety risk.

Explanation:

- Type-related effects which, depending on the thermal or mechanical stress, can be pronounced to a different degree
- Edge break-offs are permissible up to a maximum of 10% of the total friction surface.



► Break-offs are permissible outside of the area marked, however, up to a maximum of 10% of the total pad surface.

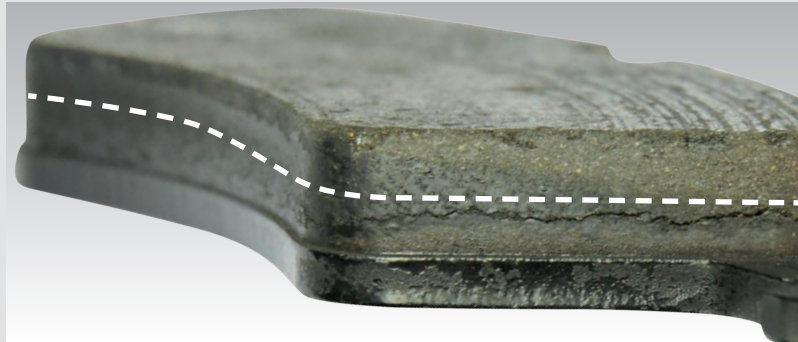


BRAKE PADS

Use-related damage Delamination/edge deterioration

Explanation:

- No break-offs or edge deterioration are permissible within this area.
- Cracks or deteriorations in the area where the friction material is connected are not permissible.



► Protected area where the pad is connected underneath the marking



► Pad with inadmissible deterioration

BRAKE PADS



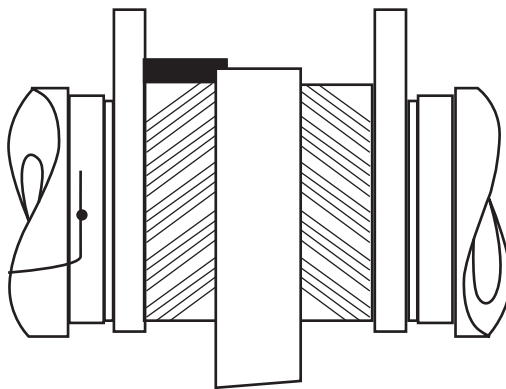
Use-related damage Faulty contact pattern



► Pad with inadequate contact pattern

Cause:

- Worn or incorrect brake disc
- Brake defect/contamination
- Insufficient brake loading
- See also fitting faults/production faults



► Damage due to off-centre travel

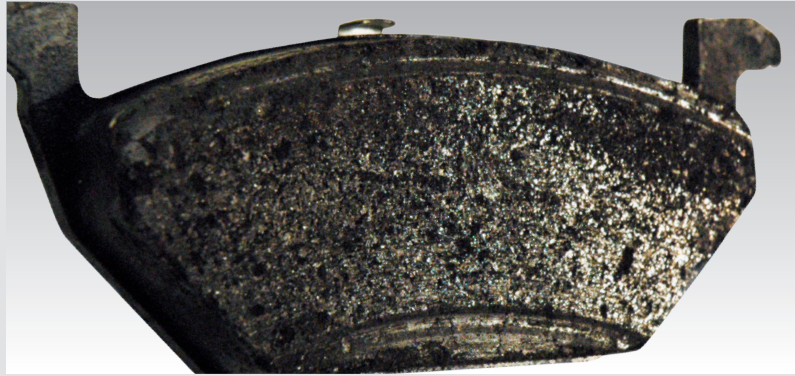


BRAKE PADS

Use-related damage

Explanation:

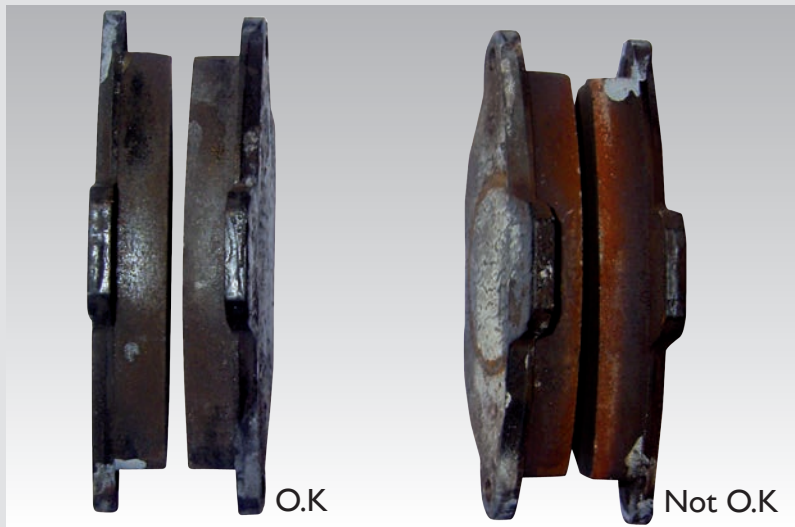
- Destruction of the friction material by mechanical and thermal overload in some places.



- ▶ Use of new brake pads on extremely scored/worn brake disc

Explanation:

- Inadequate clearance of the brake pads due to faulty brake.
- Can occur both wheel- and axle-wise..



- ▶ Figure: High thermal stress on one side



BRAKE PADS

Fitting errors

Cause:
Incorrect fitting position



Cause:
Improper handling
prior to/during fitting





BRAKE PADS

Fitting errors

Cause:

Brake pad fitted improperly



► Hold-down spring broken

Cause:

The accessory is subject to use-related wear and, depending on the model type, is included in the scope of supply.



► Clip-on plates worn

Cause:

Positioning device ignored

Attention:

Pay attention to correct seating in the caliper in order to ensure perfect functioning..



► Piston imprint on the positioning device

BRAKE PADS



Fitting errors



Cause:

Brake caliper not freed from contamination and corrosion. Dimensional deviation of backing plate..



Cause:

Brake caliper not freed from contamination and corrosion; excessive greasing..



Cause:

Unacceptable alteration during fitting.



BRAKE PADS

Fitting errors

Cause:

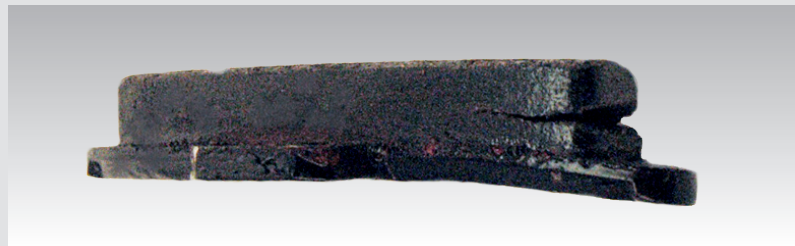
Incorrect seating of the brake pad in the caliper.



► Piston imprint not over complete surface

Cause:

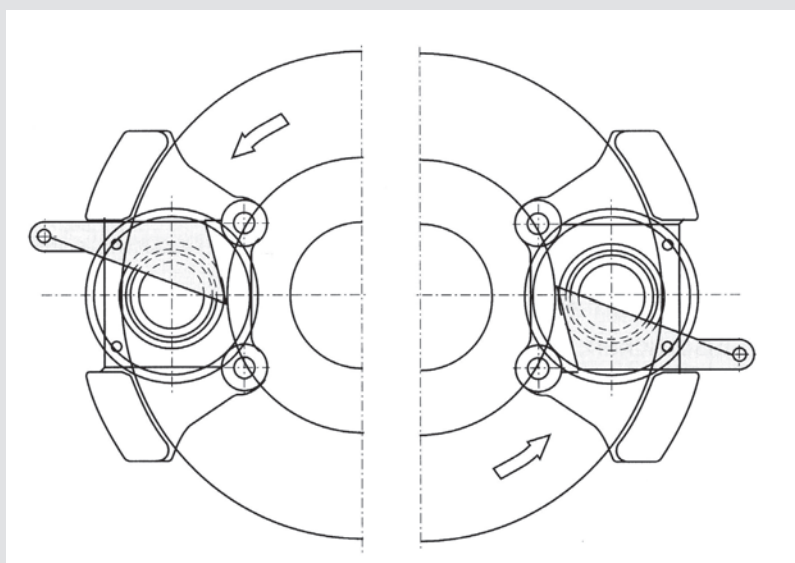
Mating surfaces have not been thoroughly cleaned or inspected for damage before fitment.



► The brake pad sticks in the calliper on one side and the friction material comes away from the back plate.

Cause:

Stepped piston misaligned in the caliper housing.



► Check stepped piston with measuring gauges



BRAKE PADS

Fitting errors

► Piston pressing on the spring

Explanation:

Spring is not correctly positioned in the groove of the piston.

► Inconsistent wear pattern

Explanation:

Incorrect alignment.

► Uneven wear pattern on the brake disc

Explanation:

The caliper is damaged and the problem has been overlooked when fitting new pads and/or discs

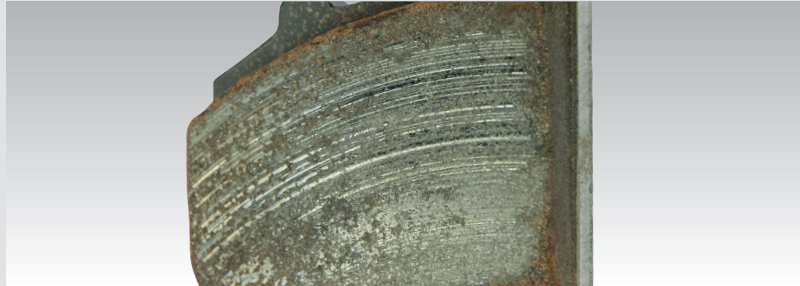


BRAKE PADS

Damage due to environmental influences

Cause:

Inadequate contact pattern, incorrect bedding in after temperature load.

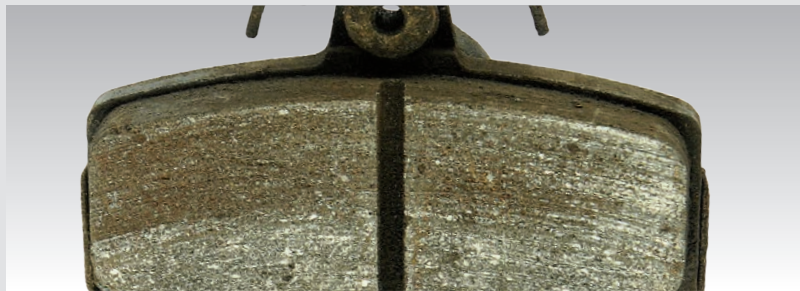


▶ Glazing of the friction surface

Cause:

The operating temperature is often not reached; self-cleaning does not take place.

Contamination of the friction surface by, e.g., corrosion, dirt, paint or salt.



▶ Contamination of the friction surface

Cause:

Use of scored brake disc.

Ingress of foreign bodies such as dirt, salt or corrosion.

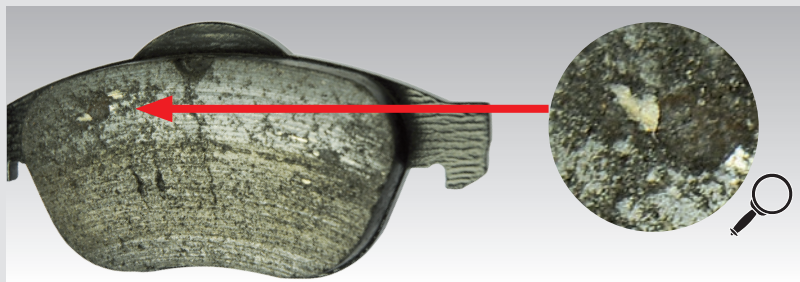
Inadequate distribution of friction particles in the friction material.



▶ Deep scoring in the pad surface

Cause:

Material transition from the brake disc onto the brake pad due to, e.g., different loading, climate and/or material incompatibility.

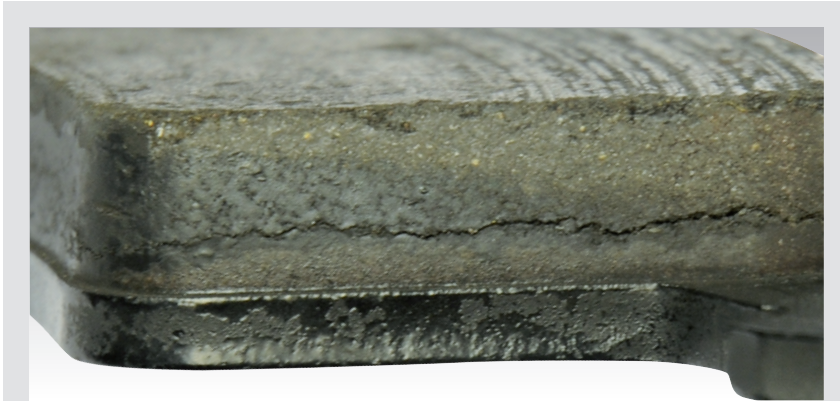


▶ Residues – metal pick-ups in the pad surface

BRAKE PADS



Production faults



► Delamination/cracks on new brake pad

Explanation:

- Unacceptable pressing fault.
- Cracks parallel to backing plate are always unacceptable..



► Break-offs on the surface, no sign of high thermal stress visible

Explanation:

- Inadequate stability of the friction material as a result of a pressing fault, leads to porosity and break-offs on the surface..



BRAKE PADS

Production faults

Cause:

Break-offs on the edges



Cause:

Design-related pressing overhang to completely utilise the friction ring of the brake disc.





BRAKE PADS

Special fitting instructions



► Special fitting instructions regarding secondary measures.

Attention:

Special fitting instructions regarding fitment of noise reducing components e.g. shims must be followed to prevent noise, judder, disc cracks as well as uneven wear.



All damage symptoms listed are exemplary and, depending on the brake / vehicle design, can have different impacts.

They serve as guidelines, but cannot replace the on-the-spot damage assessment of the expert.

They often occur in combination.



BRAKE DISCS

Attention:

Special fitting instructions regarding secondary measures must be followed to prevent noise, judder, disc cracks as well as uneven wear.

Brake judder

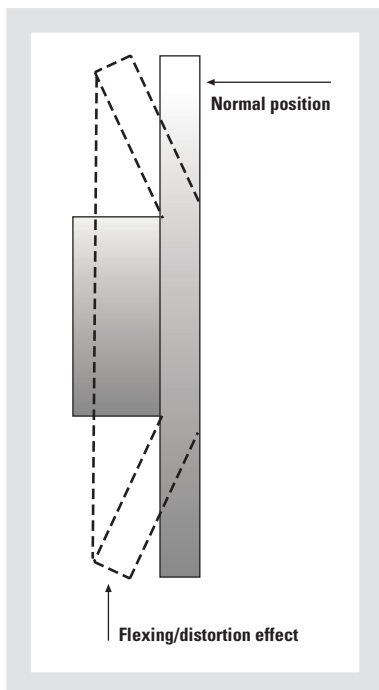
The term “brake judder” refers to non-uniform braking torques – and therefore to brake force fluctuations – which occur during braking or, more precisely, in the course of a full brake disc revolution. These brake disc related issues, which have different causes, are divided into thermal judder, which occurs during deceleration from high speeds, and cold judder, which can occur at any speed.

Thermal judder

“Thermal judder” can be described as follows:

- **A booming judder** in a frequency range between 100 and 250 Hz. The intensity of the booming can vary during deceleration but does not affect braking.
- **Torque fluctuations** can often be felt as a vibration in the steering wheel, pulsation in the brake pedal and vibrating chassis components.

The occurrence of brake judder depends on the pedal force. Thermal judder can usually be identified by a circular arrangement of **spots** on the brake disc’s friction surfaces. These are caused during braking by local overheating, which results either in a transfer of material from the brake pad to the brake disc and/or a permanent change in the structure of the brake disc casting material. Transferred material is usually removed when braking normally, but structural changes – also referred to as martensite formation – which are harder than the disc material’s basic structure, can be removed only by machining. When repairing a disc with martensitic spots, it is important to completely remove the hardened areas. To prevent risks, the disc should ideally be replaced.



Spot formation through local overheating is caused by several factors:

- The disc can under certain conditions distort when heavy braking takes place. This flexing of the disc can result in permanent distortion.
- The brake disc has worn below the minimum thickness (see manufacturer’s recommendation), which reduces the disc’s capacity to dissipate heat.
- The disc brake pads are **excessively worn** and have an **insufficient braking effect**.
- The brake disc casting and tolerances do not conform to the manufacturer’s specification.
- The disc brake pads fitted are unsuitable for the application and/or **do not comply with the original equipment** or any comparable quality standard.
- The brake system is not working correctly or some of its components are not dimensionally correct.

BRAKE DISCS



In addition to the causes of “thermal judder” due to local overheating described previously other factors which can cause or increase the likelihood of thermal judder include poorly balanced wheels, worn components in the wheel suspension system, steering and a misaligned front axle.

In most cases, judder is caused by several factors, making it difficult to clearly identify the root cause.

Thorough and careful investigation of the cause and remedying of the fault is, therefore, necessary. This work should be carried out by a specialist repair shop with a high level of experience.

The investigation essentially consists of the following test procedures:

- First determine whether the judder is coming from the **front or the rear axle**.
- Perform a **visual inspection** to determine which functional components are worn and to what extent. Heavily worn or grooved discs or pads must always be replaced as an axle set.
- Verify that the brake pads fitted have been approved for the application in accordance with the **manufacturer’s recommendation**.
- Check the **operating condition** of the disc brake, paying special attention to caliper components, and repair if necessary. Repair should be carried out by a specialist workshop.
- Check whether the **wheel** is out of balance and rebalance if necessary.
- Check the operating condition of the **suspension** and the **steering components** and replace any faulty parts.
- Check the individual components of each **wheel bearing** for defects (bearing clearance) and replace if necessary.
- Check and, if necessary, correct the **axle geometry** according to the vehicle manufacturer’s guide values.

Thermal judder can usually be reduced by choosing suitable friction materials, provided that the other vehicle components referred to are in a fault-free condition. When an optimisation of this kind is performed, it must be kept in mind that it complies with all the requirements set for the braking system.

Test procedures

BRAKE DISCS



Cold judder

“Cold judder” occurs during normal braking and can be identified by pulsation in the brake pedal, torque fluctuations in the steering wheel and/or vibration of axle and chassis components.

The **characteristic differentiating** this from “thermal judder” is that cold judder can occur virtually every time the brake is applied, and has a much lower frequency range (about 5 to 50 Hz). The intensity of the judder may also vary with the vehicle’s speed.

Cold judder is caused mainly by **variations in the thickness of the disc** (and similar to) thermal judder, can be amplified by faulty bearing components and out-of-balance wheels.

Causes of non-uniform thickness

How does this thickness variation come about? Every brake disc contains **radial run-outs** caused by production and assembly tolerances. Disc brake pads will always make some contact with the brake disc during unbraked driving, and this contact will be most pronounced at certain points of the discs. Although the contact forces are relatively low, they cause wear at these points of the brake disc. This results in a disc thickness variation, which eventually causes judder. Providing certain prerequisites are fulfilled, this disc thickness variation can usually be reduced or eliminated again by normal braking, which keeps the alternating generation and reduction of thickness variations acceptably balanced. We will deal with these prerequisites later on.

The following **factors influence disc thickness variation**:

- **radial run-outs** of the brake discs in the fitted state;
- brake pads rubbing onto the disc in the unbraked state;
- the **ability** of the disc brake pads to reduce or remove disc thickness variations during normal braking;
- correct caliper actuation that allows the release of the brake pads from the brake disc;
- the **road and environmental conditions** and the driver’s driving style.

The effects of existing and identical **variations in disc thickness** can vary significantly from one model to the next and depend on the force transmission factors and the damping capabilities of the axle, steering and chassis components.



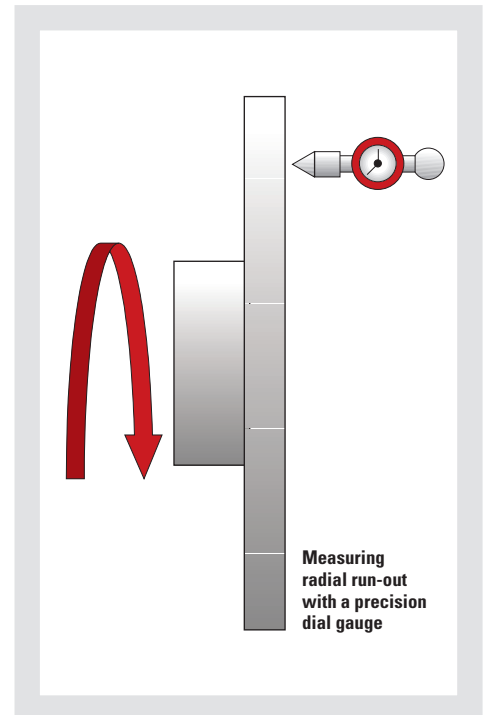
BRAKE DISCS

When investigating the causes of judder, keep the following points in mind:

- **Radial run-out** of brake discs should be tested with the disc installed on the vehicle, ideally with a correctly fitted wheel. Radial run-out is tested with a dial gauge with a measurement accuracy of at least 0.01 mm and applied about 10 to 15 mm below the outer disc radius. A measurement on the mean friction radius is sufficient, however. The reading on newer vehicles should be taken over several revolutions and the run-out should not exceed 0.070 mm (problem vehicles: < 0.040 mm). Note that this test yields valid results only on new brake discs.

Due to the component tolerances such low readings can not be achieved on older cars. An optimisation can still be achieved, however, by positioning the brake disc on the hub to the fastening bores so that the lowest measured value is achieved. But even on older cars, brake disc radial run-outs must not exceed 0.10 mm. If necessary, the component(s) causing the run-out (hub, brake disc, bearings) must be replaced. Take care that the contact surfaces are kept clean and free from defects.

- As mentioned above, the **hub** can also cause excessive radial run-out and therefore must be measured. In this context, a maximum value of 0.030 mm, referring to the outer measurable radius, can be taken as a guide. If the deviation exceeds this value, the hub should be replaced.
- A further factor affecting radial run-out is brake **disc ripple**. The disc's parallelism should therefore also be checked and should not exceed 0.050 mm. Specialist equipment is necessary for this test.
- For a precise **measurement of disc thickness variation**, specialist equipment is required, although a precision micrometer gauge with a measuring accuracy of 0.001 mm will yield sufficiently precise results. Measurements should be taken at 12 to 15 points around the disc's circumference and about 10 to 15 mm below the disc's outer friction radius. Depending on the vehicle type, thickness variations as low as 0.012 to 0.015 mm (problem vehicles: < 0.008 mm) can cause judder. On new discs these values must not be exceeded. They are also the absolute tolerance limit for Mintex brake discs.





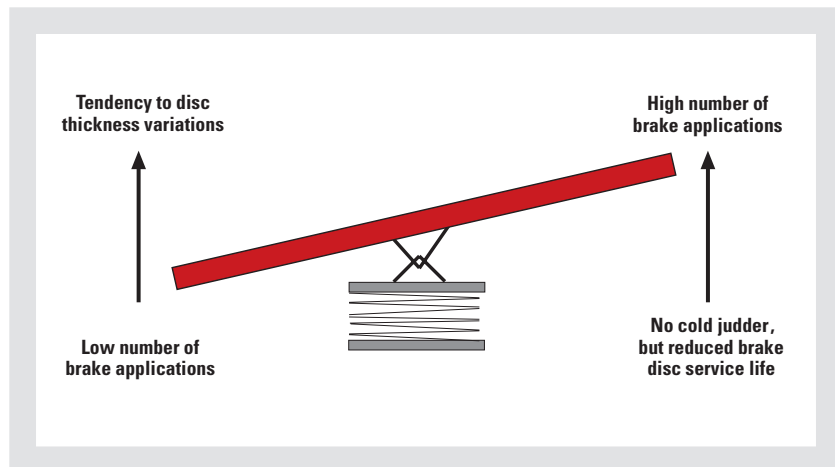
BRAKE DISCS

Further testing

In addition to these tests, some of the test procedures described in the section about “thermal judder” should also be performed. These include checking the disc brake’s operating state, the wheel bearings, suspension and steering components, the front axle adjustment and the use of car manufacturer approved disc brake pads.

As we have shown, the causes for excessive radial run-out and disc thickness variations can be difficult to identify. But by performing the possible measurements on the affected components and – if necessary – replacing them, these faults can largely be limited to acceptable levels.

As already mentioned, driving style as well as traffic and road conditions also play a part in causing brake disc thickness variations. Journeys of several thousand miles with little braking at low friction power generation can result in sufficient disc thickness variations to cause judder. A subsequent driving phase containing a lot of braking can regenerate the discs again.



BRAKE DISCS



Judder caused by static spots

If a vehicle is not driven for a longer period, and especially if it is exposed to moisture and/or salt, corrosion can cause the brake pads to adhere to the disc or the area of the disc opposite the pad **can corrode to such an extent** as to cause severe judder. Corrosion adhesion can often be freed by releasing the clutch quickly in first gear to gently jerk the vehicle forward. If the adhesion is severe, dismantling the brake system and replacing the brake discs may be the only remedy. If the brake pads are damaged they will have to be replaced. Slight judder after a longer time of non-use may disappear after the car has been driven for a while. If the judder is severe or does not go away by normal braking, the brake discs must be replaced.

Squeaking noise during braking

Provided that the brake system does not exhibit any design or other fundamental faults, the brake disc contributes to a squeaking noise only if the gap between it and the brake pad is inadequate or the disc surfaces are damaged or corroded. It is true to say, however, that brake discs, because of their geometry, are susceptible to noise issues.

This fault can be remedied as follows:

- Check the **state of wear and the surface condition** of the brake pads and brake discs and replace them if necessary.
- Verify that the fitted brake pads are **manufacturer approved and suitable** for the vehicle.
- Check that **anti-noise elements** (damping shims, damping lacquer, pastes) are fitted and in good working condition.
- Check the **freedom of movement** of the brake pad guides and caliper piston.

Disc brakes achieve their braking effect through dry friction, which inherently tends to cause vibration and therefore noise. Because of the influencing factors and operating conditions described above, a complete suppression of braking noise is extremely difficult, but with modern technology a high level of noise suppression can be achieved.

BRAKE DISCS



Further possible defects

Poor braking effect

In most cases – especially on front wheel brakes – the problem is not caused by the brake disc.

In these cases check whether suitable brake pads have been fitted and are not excessively worn, that the surfaces of brake discs and pads are free from defects and that the brake system (pistons, guides, servo units) are working correctly.

On rear axle disc brakes, insufficient specific load can cause corrosion of the brake disc or surface conditioning of the friction components, which in turn reduces the brakes' effectiveness. However, due to the low rear axle brake force friction, this is barely noticeable to the driver. In these cases the brake discs must be replaced, along with the brake pads.

Brake discs exhibit cracking

Thermal shock loads on the surface of the brake disc can cause cracks in the cast structure. These cracks reduce the brake disc's strength and can, depending on their size and the applied forces, result in material fracture. At what size cracks begin to represent a problem is difficult to say, but to **prevent failure** with its potentially fatal consequences, brake discs on which cracking is clearly visible without technical aids should be replaced. It is also worth noting that the likelihood of fracture increases with the length of the cracks.

In addition to presenting a risk of disc fracture, a cracked disc surface acts like a machine tool on the brake pads, causing excessive pad wear, which becomes more pronounced at higher temperatures, at which the crack width increases.



BRAKE DISCS

Brake discs are scored

Score marks on the friction ring surface can have various causes:

- unsuitable friction material of the brake pads;
- severe soiling of the brake discs or pads;
- corrosion;
- overloading of the brake system;
- unsuitably soft brake disc material.

Scoring can have a wide range of structures, from very fine to very coarse, which makes it difficult to define clear rules about the extent of scoring that is still acceptable.

In general, an experienced mechanic can usually judge whether or not a scored disc needs to be replaced. Up to a point, scoring does not affect the braking performance, but if the brake pads are replaced it is common practice that the discs have to also be replaced to optimise braking efficiency.

Brake disc service life is too short

The useful life of brake discs and brake pads is only one – albeit very important – aspect in the development of a brake system. For normal usage conditions, the design life of the front wheel brake discs should be equivalent to the useful life of two sets of corresponding brake pads. Some discs may have a shorter useful life, because they have been designed to achieve specific targets on which more value is placed, for example to prevent unwanted **effects such as cold judder**.

In practice, the useful life of a brake disc depends on the following influencing factors:

- the driving style;
- road and traffic conditions;
- climatic conditions;
- the level of dirt and contamination;
- the brake disc's casting material and structure;
- the aggressiveness of the brake pads;
- the freedom of movement of the sliding and guide elements and the brake actuating piston.

Because of the many influencing factors, in practice, brake disc life turns out to be a statistical figure. Some discs reach the end of their useful life after just **15,000** miles, others may provide trouble-free service for as much as **100,000** miles, while even lower or higher mileages are possible in individual cases.



BRAKE DISCS

Typical examples of common problems

Summary and illustrations

Analysis shows that a **large proportion** of customer **complaints** about faulty brake systems are attributed to **the brake disc**. And in those cases, in turn, brake judder is the main cause for complaint.

Because of the complexity and the numerous possible influencing factors, brake disc damage and its causes are often difficult to identify in any particular case. Experience has shown that, in most cases of actual brake disc damage, the root cause usually lies elsewhere (excessive disc run-out due to overall tolerances, unsuitable brake pads, faulty calipers, etc.).

In many cases, the brake discs about which a complaint has been received prove to be in perfect working condition and the root causes of deficiencies have not been identified. This inevitably leads to complaints being rejected after costly and time-consuming tests, much to the annoyance of all parties concerned. Even if the immediate problem seems to be solved by a replacement of certain parts, the symptoms usually reappear after a while.

This situation can be improved – and customer satisfaction guaranteed – **only if the root causes can be reliably determined and only if approved spare parts are used and maintenance jobs are carried out with care and precision.**

BRAKE DISCS



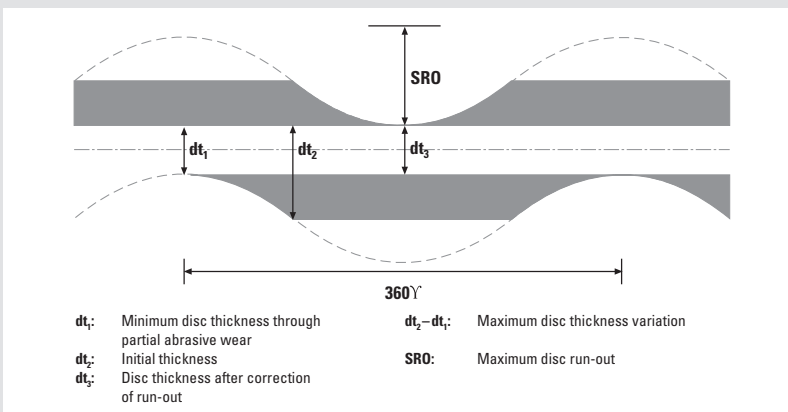
Thermal judder



► “Judder marks” through local overheating of brake disc

Booming judder and vibration during braking from high speeds

Cold judder



► Disc thickness variation of brake disc

Identification:

Vibration of chassis parts and friction-induced rotary vibrations or pulsation of the brake pedal during braking at almost any speed



► Measuring disc run-out on the vehicle

BRAKE DISCS



Static spots

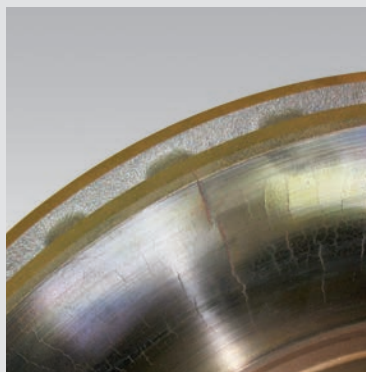
Cause:
Corrosion, caused by humidity, salt or other environmental factors.



► Brake disc with static spots

Cracked brake discs

Cause:
High alternating thermal and mechanical loads.



► Brake disc with severe heat cracking

Cause:
Brake disc worn beyond permissible wear limit.

Identification:
Suddenly occurring, severe signs of judder



► Cracked brake disc



BRAKE DISCS

Scored brake disc



▶ Brake disc with score marks

Cause:
Soiling, overload,
unsuitable disc and/or
brake pad material.

Completely worn brake pads



▶ Friction material worn
down to the steel back plate

Cause:
Brake pads not
replaced in time.



▶ Brake discs damaged by
contact with backplate
due to worn out friction
material



BRAKE DISCS

Corroded brake discs

Cause:

Long time out of use in damp conditions, structural changes in the friction ring as a result of widespread static spot formation.

Symptoms:

Rough brake, braking noise, signs of judder.

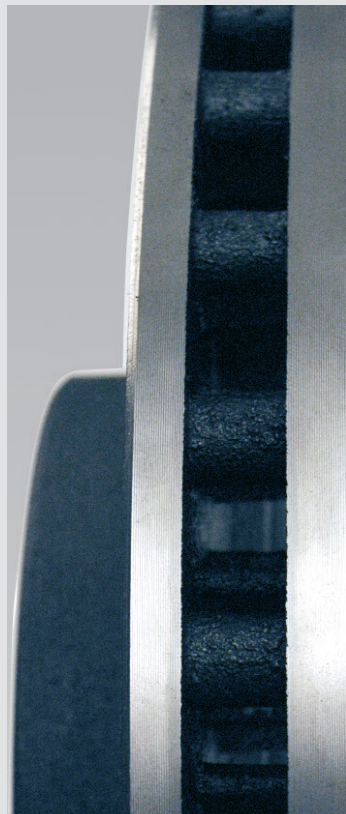


► Corroded brake disc

Inner and outer friction rings have different thicknesses

Design-related for different heat absorption.

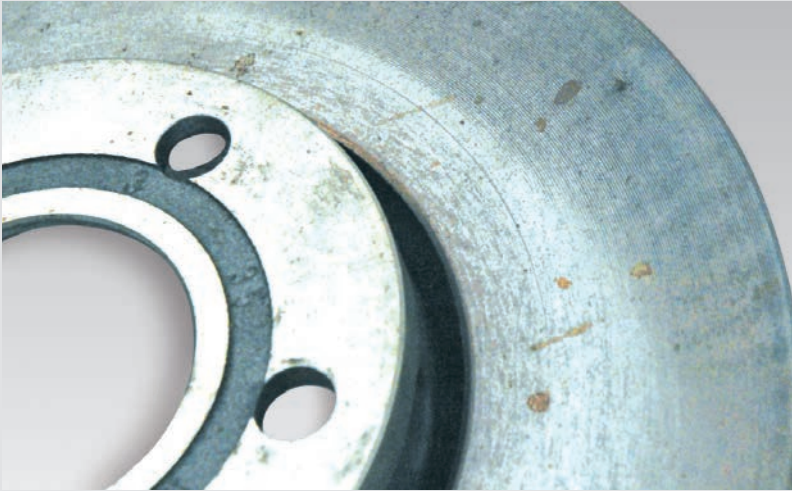
Max. permissible difference per friction ring is 0.5 mm.



BRAKE DISCS



Thickness variation in friction ring



► Disc thickness variation

Cause:

Incorrect processing, operation with excessive disc run-out combined with simultaneous insufficient brake loading.

Symptoms:

Cold judder

Heavy underlying corrosion at the contact surface

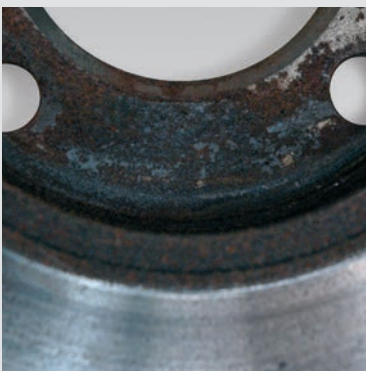


Cause:

Insufficient cleaning, insufficient contact due to contamination.

Symptoms:

Causes disc thickness variations as a result of unacceptable radial run-out.



► Heavy underlying corrosion

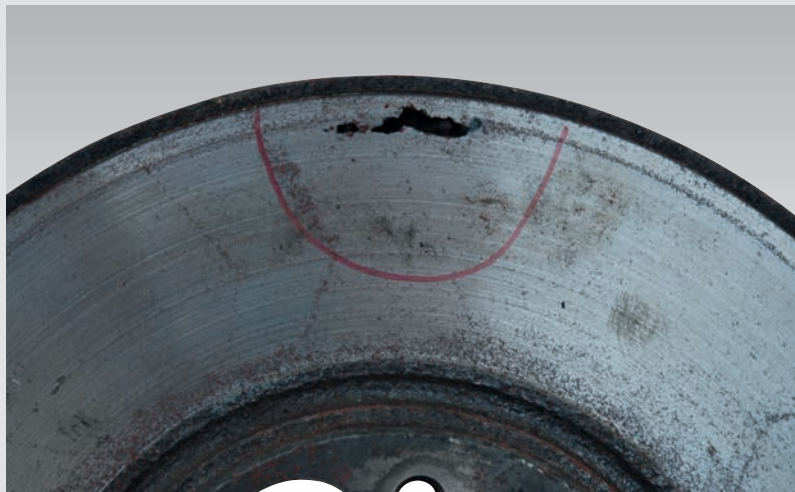
BRAKE DISCS



Blowhole damage

Cause:
Fault during the casting process.

Effect:
Reduction of stability.



► Blowhole damage

Cracks in the area of the brake disc chamber

Cause:

- Mounting fault (incorrect torque when mounting the brake disc).
- Incorrect seating of the brake disc as a result of non-adherence to the manufacturing tolerances.

Effect:
Reduction of stability;
brake noise



► Cracks in the area of the brake disc chamber

Mintex Serviceline



**Telephone number:
01 274 854 006**

Call us with your questions about products and technical issues. We would also be pleased to hear your advice and practical experience. The line is open during business hours.
uk.technical@tmdfriction.com

MINTEX-SERVICE

Further information is available on the Internet:



www.mintex.com



MINTEX-SERVICE

BRAKEBOOK. MY ONLINE CATALOGUE.

This cutting-edge web-based catalogue system has been exclusively developed for TMD Friction and contains detailed catalogue data covering our whole product range.

Search for the right part either by Mintex part number, OE- or cross reference numbers. The expert search function also allows searching by product specification, such as width, height, thickness, number of wear indicators and many other criteria, making the identification of brake parts as easy as possible.

New products will be automatically displayed after each data update. And, as opposed to TecDoc, this will take place every week. Therefore, check frequently to see what's new.

In addition, Brakebook allows registered users to create pdf catalogues tailored to their individual requirements – either for the entire product range, a selection of products, parts from particular manufacturers or even for special models. So your customers will always be up to date.



Further information under:
www.brakebook.com



On www.mintex.com, you will find everything worth knowing about Mintex. Every day, at any time, all year long. Be it the current product catalogues or a large variety of brochures.

INCREASING KNOWLEDGE. IMPROVING SKILLS.

Want to keep up with the latest advances in brake technology? No problem. Our team of experts offers world-wide training courses, individually tailored to the specific requirements of workshops and dealers to improve knowledge and customer satisfaction.

TMD Friction is all about brake technology. As the global leader in brake friction solutions, we are trusted by the biggest brands in the automotive, industrial and rail sector to deliver effective, reliable and safe braking applications.

TMD Friction is the preferred supplier for the global leading car brands and commercial vehicle manufacturers, and we are also one of the leaders in the rail sector.

Our pioneering products are also chosen to provide effective, safe braking for some of the world's most prestigious racing series, such as the 24 Hours of Le Mans.

Past, present and future

Over a hundred years in the business have seen us grow and prosper, becoming the world's leading supplier of brake friction. Our continued success is based on providing technical excellence, consistent quality and constant innovation through intensive R&D investment.

Tomorrow's solutions developed today

Developing and refining products to improve performance for quieter, smoother, more efficient and environmentally responsible braking is a continuous process. We invest more than €25 million each year to ensure we not only meet the demands of today, but pioneer the technology that will be needed for tomorrow.

TMD FRICTION
A NISSHINBO GROUP COMPANY

TMD Friction UK Ltd
PO Box 18 Hunsworth Lane
Cleckheaton
West Yorkshire BD19 3UJ
UK
E-mail: uk.marketing@tmdfriction.com

Mintex is a registered trademark of TMD Friction.



www.mintex.com