

SMOKY HILL EXPRESS

Elbert County Historical Society & Museum Newsletter

FALL 2017

IN THIS ISSUE

- Eastern CO Museum Meeting4
- Friends of the Museum3
- Membership/Sponsorship Levels ..2
- Museum Sponsors6
- Smoky Hill Trail Exhibit5
- Tour Ideas3
- Who Am I?2

THE MUSEUM IS CLOSED FOR THE WINTER. REOPENING SUNDAY, MAY 27, 2018!

UPCOMING EVENTS

Eastern Colorado Museums & Historical Societies Meeting
 Saturday, April 28, 10:00 am
 Location to be announced

Spring Meeting and Program Volunteer Orientation
 Saturday, May 19, 10:00 am
 Elbert County Museum Assembly Room

Elbert County Museum 2018 Opening Day
 Sunday, May 27, 1:00 - 4:00 pm

Pioneer Fourth Celebration
 Wednesday, July 4, 10:00 am - 3:00 pm
 Elbert County Museum Grounds

Annual Membership Meeting
 Saturday, September 8, 10:00 am
 Elbert County Museum Assembly Room



2017 SEASON HIGHLIGHTS

The Elbert County Historical Society and Museum enjoyed another fun and successful year in 2017.

Museum visitors were captivated by **Don and Janet Bailey's** incredible collection of American West memorabilia. The summer exhibit included a small sampling from Simla's own **Bailey Saddleland Museum** and included such unique pieces as a traveling salesman's miniature saddle sample and children's toy circus wagon.



In May, Society members had the privilege of touring **Tom Watt's** one of a kind Wagon Museum located southeast of Kiowa near Fondis. Tom had collected over 50 horse drawn wagons, stagecoaches, carriages, sleighs, hearses, including carriages once used by Teddy Roosevelt and William Jackson Palmer. Those who attended this tour were very fortunate to be able to view

this rare collection, as the entire stock of the museum was sold at auction some two weeks after our tour. The Elbert County Historical Society teamed up with the **Cherry Creek Valley Historical Society** to arrange this tour- many thanks to **Garry O'Hara**, CCVHS president.

The Fourth of July was celebrated on the museum grounds with fun and festivities. Visitors enjoyed the warm weather, great food and activities including: the museum open house, silent auction, pie judging contest & auction and cake walk -just to name a few. Each year an amazing team of volunteers comes together to make the day possible and this year was no exception. Additionally, entertainment was provided by **Duane, Billie and Anna Owens** and **Amelia Campbell**; and pie

Continued on page 3





ELBERT COUNTY HISTORICAL SOCIETY & MUSEUM

Joe Martell

President

Lucy Hoffhines

Secretary

John Metli

Board Member at Large

Carla Martell

Past President

Hank Smith

Vice President

Donna Smith

Treasurer

Monty Ashliman

Board Member at Large

Elbert County Historical Society

515 Comanche Street ▪ PO Box 43

Kiowa, Colorado 80117

ElbertCountyMuseum.org

The Elbert County Museum is owned and operated by the Elbert County Historical Society, a 501 (c)(3) non-profit organization.

MISSION STATEMENT

To record and maintain the history of Elbert County, Colorado from the earliest settlement.

To work for the establishment of appropriate vaults and archives for the preservation of original manuscripts, documents, photographs and artifacts which may come into the possession of the Society.

To maintain, preserve and house the above stated articles in the Elbert County Museum.

WHO AM I?

- Where did my parents homestead?
 - South of Cameron
 - Rock Butte
 - Along Comanche Creek
- How many brothers and sisters did I have?
 - Seven
 - Eight
 - Nine
- What was my profession?
 - School Teacher
 - Midwife
 - Dress Maker



Answers on page 5

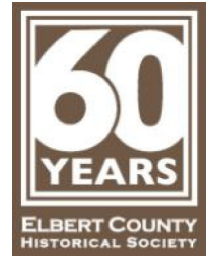
MEMBERSHIP LEVELS

Individual - \$15

Student/Senior - \$8

Family - \$20

Volunteer - Donation of six (6) hours of volunteer time or participate in two (2) functions and/or events.



SEASON SPONSORSHIPS

Museum Season Sponsorships are collected annually and expire at the end of each calendar year. Sponsorships support the general operating fund, new and permanent exhibits, development of educational initiatives and public programs, and the historic museum building and its infrastructure.

Season sponsorships are available at four different levels and are identified by icons of early Elbert County industry

Locomotive -

Contributions of \$200 cash/merchandise or more will receive:

- acknowledgment as a Season Sponsor on all exhibit and event flyers (including Pioneer Fourth)
- recognition on signage inside the museum and at the Pioneer Fourth
- inclusion in the newsletter(s) and
- on our website

Ponderosa Pine -

Contributions of \$100 cash/merchandise or more will receive:

- recognition on signage inside the museum
- inclusion in the newsletter(s) and
- on our website

Windmill -

Contributions over \$25 cash/merchandise will receive:

- recognition on signage inside the museum
- inclusion in the newsletter(s)

Cultivator -

Contributions of \$250 cash or more through the **East Central Enterprise Zone**** will receive:

- acknowledgment as a Season Sponsor on all exhibit and event flyers (including Pioneer Fourth)
- recognition on signage inside the museum and at the Pioneer Fourth
- inclusion in the newsletter(s) and
- on our website

****East Central Enterprise Zone**

By making a \$250 or more cash donation, contributors receive **25% of that amount as a credit against their state tax liability (i.e.: \$250 donation = \$62.50 credit)**. The contribution also may be itemized on their federal tax return.

For additional details on the different levels of [membership](#) or [sponsorship](#), forms can be picked up at the museum's visitors desk or printed off our website at ElbertCountyMuseum.org.

2017 SEASON HIGHLIGHTS

Continued from page 1

auctioneer **Lee Benjamin**.

The Annual General Membership Meeting and Volunteer Appreciation reception was held the second weekend in September. Board members **Hank Smith** (Vice-President), **Donna Smith** (Treasurer) and **Monty Ashliman** (2nd Director-at-Large) were reelected, plans to complete phase three of the Smoky Hill Trail exhibit were announced, and museum hosts and volunteers were recognized for their dedication and contributions to the museum for the past year.

Later that same month, ECHS sponsored a field trip to the Rambler Ranch northeast of Elizabeth. Owner **Terry Gale** greeted visitors and gave a brief overview of his huge collection and the general layout of the property. The Rambler Ranch is home to the largest private collection of AMC vehicles in the world. In addition to all the AMC models there are many other rare and unusual collector autos on display. A total of 700 cars are housed and maintained in the many buildings. Mr.



Mr. Gale began collecting Nash and AMC vehicles more than 25 years ago. His collection

started with his father's 1954 Nash Ambassador -which is now one of the featured displays in the AMC building. Over time Terry has constructed more buildings to house his ever growing collection, including a replica 1940's era Sinclair gas station and a 1960's house - complete with period furnishings and a 1955 Kelvinator full kitchen.



The Elbert County Historical Society welcomed a record 61 Season Sponsors this year. Sponsorship gifts were made through the **East Central Enterprise Zone**, the **Colorado Gives** website and in person. Thank you to all our sponsors!

TOUR IDEAS?

ECHS would like to arrange additional tours of interesting and historical sites in and around Elbert County. Email us at info@elbertcountymuseum.org with your suggestions of possible sites you would be interested in visiting.

FRIENDS OF THE MUSEUM

Thanks to all our friends who were 2017 museum hosts, they include: **Darrel & Shirley Abbey, Monty Ashliman, Ann Coontz, Terry Courtright, Karen Dilger, Jan Erker, Harold Heckman, Lucy Hoffhines, Judy Kimzey, Ric & Katee Kolm, Jim & Carla Martell, Nita McKnight, John & Sherry Metli, Marge Mottinger, Margie Musgrave, Paul Nasrallah, Patsy North, Verena Nelson, Sylva Pemberton, Tom Peterson, Cecil & Phylis Pugh, Donna Reese and Hank & Donna Smith.**

The board of directors appreciates the dedication of all our faithful hosts. If you would be interested in being a museum host in 2018, please call **Carla Martell** at 303.621.2229.



FOR GIVING MADE EASY, DONATE ONLINE!

Visit Elbert County Historical Society and Museum on **ColoradoGives.org**, a year-round online giving website that features more than 2,000 Colorado charities. Learn about our programs, how we are helping our community, and donate online directly to us. Tell your friends and family -- no more stamps, no more envelopes -- simply donate online.

Go to ColoradoGives.org and enter **Elbert County Historical Society and Museum** in the search field. Or, simply click on the Donate Now link from our website. From all of us at Elbert County Historical Society and Museum, thank you for your support! ColoradoGives.org is made possible by Community First Foundation.

EASTERN COLORADO MUSEUM'S & HISTORICAL SOCIETIES MEETING

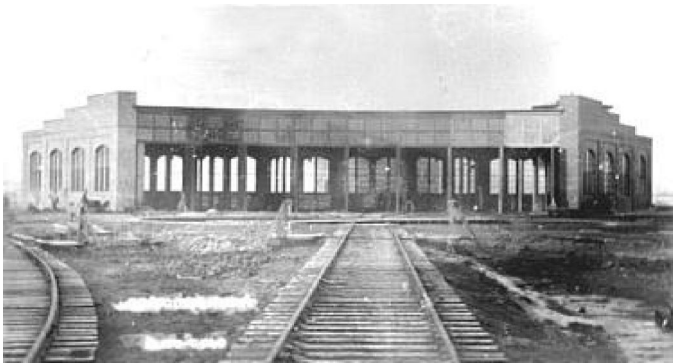
The 2017 Fall Meeting of the **Eastern Colorado Museums & Historical Societies (ECM&HS)** was held on Saturday, October 7 at the Hugo Community Center and hosted by **Roundhouse Preservation Inc. (RPI)**. Representatives from **Cherry Creek Valley Historical Society, Cheyenne Wells Old Jail Museum and Mountain States Telephone & Telegraph Museum, Elbert County Historical Society, Highlands Ranch Historical Society, Historic Douglas County, Larkspur Historical Society, Limon Heritage Museum, Our Journey and Kit Carson County Carousel & Museum, Parker Area Historical Society and Roundhouse Preservation Inc.** were all in attendance.

The morning session began with an interesting program on the restoration efforts of the **Hugo Union Pacific Roundhouse** and was presented by RPI Treasurer, **Roxie Devers**. Ms. Devers spoke extensively on the history of the roundhouse, the grants RPI has received, the restoration process and future plans for Colorado's last surviving brick roundhouse.



Following the program and a delicious homemade lunch, the business meeting took place and was moderated by ECHS president **Joe Martell**. Representatives from each organization in attendance gave a summary of their group's activities for 2017 and a brief question and answer period was held. The meeting concluded with a tour of the roundhouse.

For more information on the Hugo Union Pacific Roundhouse project go to: HugoRoundhouse.org.



The Hugo Roundhouse was built by the Union Pacific in 1909 and was in active service until the late 1940's when it was closed and the turntable was removed. The building then operated as a hardware store and implement dealership until the 1970's, when it became primarily used for storage. Lincoln County acquired the property in 2002. Later that same year, **Roundhouse Preservation Inc.** was formed and exempted as a 501(c)3 non-profit organization to administer the restoration efforts.



WHO AM I?

Continued from page 2

Answers: c) Along Comanche Creek, a) Seven, b) Midwife

Josephine Albus was born to John (Joseph) and Bertha Albus in October 1879. Her father and mother were both from Germany and immigrated to America in the 1860's before homesteading 10 miles northeast of Kiowa near Comanche Creek. Mr. Albus was an Elbert County pioneer (his cattle brand was registered in July 1879), as well as an early county commissioner. His wife Bertha died when Josephine was an infant, leaving him to care for the new baby and her four older siblings: Amelia (Emily), Adolph, Annie and Florian. He later married Martha Miller and raised her three children (Mary, Albertine and Frank) along with his own.



The Albus family were devout Catholics and just after the turn of the century Joseph Albus helped establish and construct the first church in Kiowa -Saint Anne's. His youngest daughter's strong faith led her into a life of service to God and community. When she was a young woman she decided to become a nurse and midwife.

Josephine lived and worked out of her home in Kiowa (north

of the Masonic Hall and next door to Dr. Rogers' house), where she delivered nearly 500 babies during her lifetime. She remembered their names and birthdays -often sending a card or a small gift.

Ms. Albus never married or had any children of her own. And yet as the babies she delivered, grew up and had babies of their own Josephine thoughtfully considered them as her own children and grandchildren, and was affectionately called "Auntie Jo" by many of them.

Her dedication to the community was equally visible as she could be seen serving as head cook for birthdays, holidays, picnics, school and church functions. She was in charge of the community Christmas Tree, head of the Catholic Altar Society, and a leading member of "The Community Six".

The last ten years of her life were spent caring for her older brother Florian. Josephine Albus died on March 16, 1957.

DID YOU KNOW?

The church that Josephine worshipped in is now the Elbert County Library -Kiowa Branch. This landmark was built in 1903 with sandstone that was quarried from a location southeast of Kiowa near the area once known as Hangman's Point (close to the present day Pine Meadows Subdivision).

SMOKY HILL TRAIL EXHIBIT

Three years ago the Elbert County Historical Society and Museum embarked on its most exciting project to date -to tell the story of the **Smoky Hill Trail** and the history of transportation in Elbert County through a new, fun and interactive exhibit.

- Phases One (2014) and Two (2015) detail the trail's origin, and subsequent conversion from trail to rail as railroads began making their way West.
- The first two phases were funded largely in part through grants, anonymous donors and the generous support of museum season sponsors.
- Phase Three will showcase the advent of automobile travel and how today's Highway 86 shadows segments of the original trail.



We've been able to complete the first two phases; however we need your support to complete this project!

Go to ColoradoGives.org and enter **Elbert County Historical Society and Museum** in the search field. Or, simply click on the Donate Now link from our website.

From all of us at **Elbert County Historical Society and Museum**, thank you for your support!

ELBERT COUNTY MUSEUM SPONSORS

While the museum receives funds through monetary donations given at the museum and with annual historical society memberships; Season Sponsorships and the Pioneer Fourth celebration are the main areas of income which allow the Elbert County Historical Society to develop exhibits and educational opportunities and to improve and maintain the museum building.

Thank you for your commitment to the educational and historical importance of the Elbert County Museum!

Locomotive



Anonymous Donor
Bender Menders, LLC
Ben & Laurie Duke
Elbert County Abstract & Title Co.
Front Range Kubota
High Plains Food Store
Lucy Hoffhines
HOO Motors
IREA
JR's Village Repair
Katee & Ric Kolm
Legacy Plow & Trailer
Jim & Carla Martell
Simla Frozen Food Locker, LLC
Spring Valley Golf Club
Sun Valley Electric Inc.

Ponderosa Pine



Angie's Cuttin Corner
James Duvall
Elizabeth Locker Plant
Leonard Flageolle
Gordon Insurance Agency
Hamacher Well Works Inc.
Kiowa Alumni Association
Claude and Jane Rasmussen
Sizzor Magic Hayes/Haulmann
Kelly & Marnie Steber
Tell-Tale Productions -Jim Jones
Jeanne Tompson

Windmill



Anonymous Donor
Roger Berst
Burger King -Parker
Dusty Plains Veterinary Service
David & Pattie Gabriel
Golden Joe Coffee
Hair Addicts (Bell/Jantz)
Heat Exchangers Services LLC-HEX
Betty Hood
Jill's Feed & Country Supply
Dulce Jones
King Soopers -Stroh Ranch
Landmark Premier Properties -Brian Janes
MK Liquors
Margie Mottinger
Margie Musgrave
Mountain Man Nut & Fruit Co. -Elizabeth

(Windmill continued)

Murdoch's -Parker
Napa -Elizabeth
Parker Port-A-Potty
Ann Pidgeon
Safeway -Elizabeth
Sam's Club -Castle Rock
Sprouts -Parker
True Value -Elizabeth
Walmart -Elizabeth
Gary Wolf

Cultivator



Laurel Brown
Glaser Gas & Equipment Co. -Kiowa
Harold Heckman
JC Martell
John & Sherry Metli
Smith Ranches

ELBERT COUNTY HISTORICAL SOCIETY & MUSEUM

515 CONANCHE STREET • PO BOX 43 • KIOWA, COLORADO 80117