

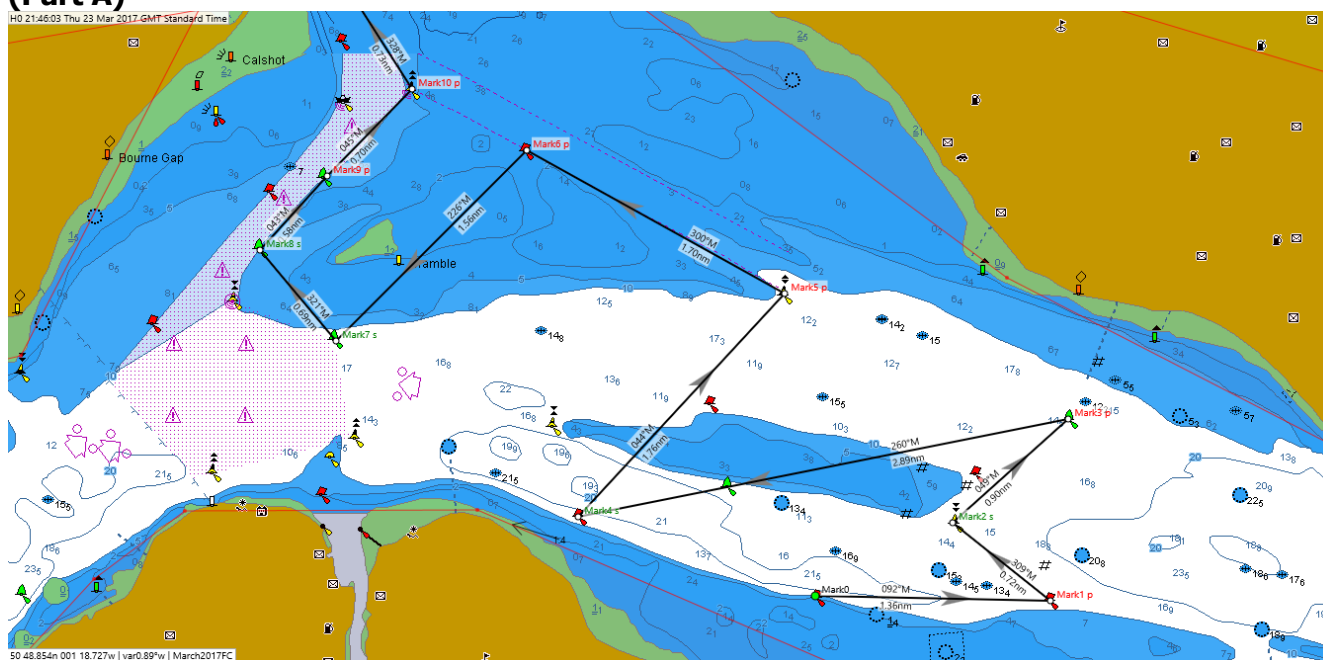
# Fast Cruise March 2017 – COURSE

**NOTE Start 11.00 – 11.10; one race only, one course for all boats.**

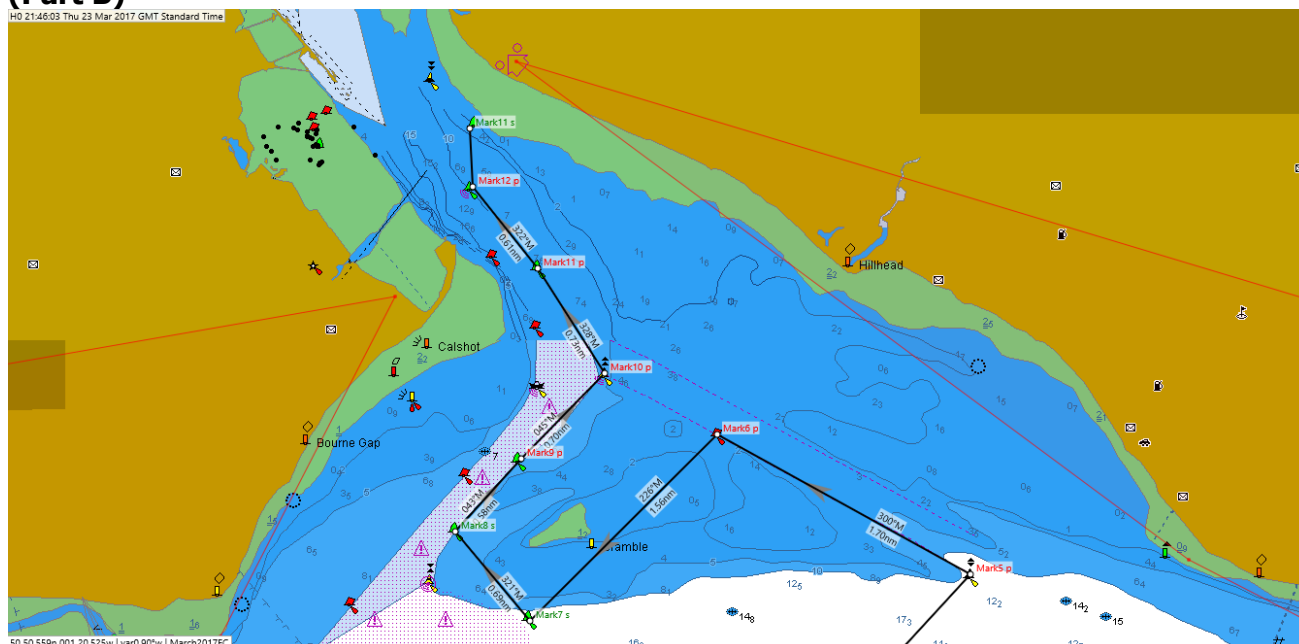
The course is defined by the appx Lat/Long POSITION of each mark and as shown on the chartlet. Names of buoys are given for assistance only and should not be relied upon.

Control yacht is **Kioni**. Keep a listening watch on VHF Ch 77 from 09.30 until the end of the race or your earlier retirement for course amendments or course shortening instructions. Advise race control immediately by **VHF** if you retire at any point before finishing the course. Send your **start and finish times** by SMS to 07970 846 698 in the format <boat name, start hh.mm.ss, finish hh.mm.ss., boat in front, boat astern>, taking the times from your GPS. **Please do not send elapsed times, or use other formats. Please send your times as soon as possible after you finish.**

## COURSE (Part A)



## (Part B)



Mark			Latitude	Longitude	Bearing	Range nm	Comment			
Mark0	Peel Bank PHM	P	50 45.493n	001 13.340w			START by leaving Peel Bank to port within 200m on a bearing of 000 <sup>0</sup> M			
Mark1	Mother Bank PHM	P	50 45.464n	001 11.193w	092°	1.4				
Mark2	SE Ryde Middle SCM	S	50 45.911n	001 12.088w	309°	0.7				
Mark3	Browndown SHM	P	50 46.514n	001 11.030w	049°	0.9				
Mark4	Norris PHM	S	50 45.945n	001 15.511w	260°	2.9				
Mark5	East Bramble ECM	P	50 47.240n	001 13.623w	044°	1.8				
Mark6	Hill Head PHM	P	50 48.067n	001 15.981w	300°	1.7				
Mark7	South Bramble SHM	S	50 46.967n	001 17.721w	226°	1.6				
Mark8	Thorn Knoll SHM	S	50 47.492n	001 18.417w	321°	0.7				
Mark9	North Thorn SHM	P	50 47.920n	001 17.805w	043°	0.6				
Mark10	Calshot NCM	P	50 48.423n	001 17.026w	045°	0.7				
Mark11	Blackjack SHM	P	50 49.039n	001 17.653w	328°	0.7				
Mark12	Hook SHM	P	50 49.518n	001 18.258w	322°	0.6				
Mark11	Bald Head SHM	S	50 49.860n	001 18.283w	358°	0.3	FINISH by leaving Bald Head to starboard within 100m on a bearing of 060 <sup>0</sup> M			
						14.5				

© LSC March 2017