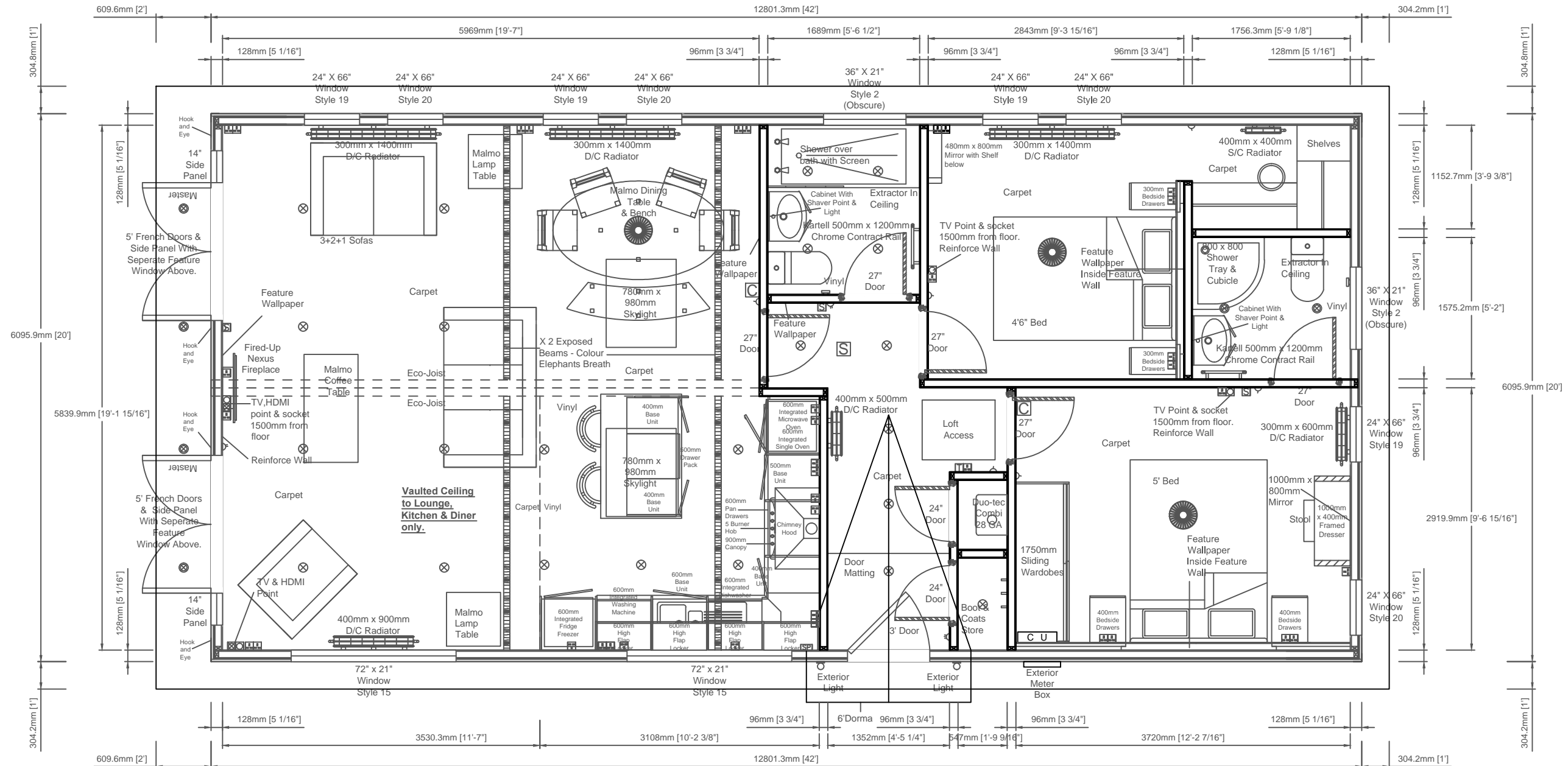


Elevations Are For Illustrative Purposes Only



Room Sizes		
Rooms	Length	Width
Lounge/ Diner	19'7"	19'2"
Kitchen	10'3"	9'7"
Bathroom	5'7"	6'3"
Bedroom 1	12'3"	9'7"
Bedroom 2	9'4"	9'4"
Ensuite	5'9"	5'2"
Wardrobe	5'9"	3'10"

**Prestige Contemporary 42' x 20' (12.8m x 6.09m)**  
**2 bed en-suite W/I/W**

Customers Signature; \_\_\_\_\_  
 Date; \_\_\_\_\_

Date:	This home is designed in accordance with BS3632	
Scale:	Relative	
Drawn:		
Code:		
Dwg No:		
Serial No:		

Rev	Date	By	Description

Notes;  
 • Timber Ogee Door Casings



Unit 4, Pytchley Lodge Road Industrial Estate, Kettering, Northants NN15 6JQ  
 Tel: 01536 518513 Fax: 01536 523438  
 Email: sales@prestigeparkandleisurehomes.com  
 Visit our website: www.prestigeparkandleisurehomes.com

Legend			
△	Light Switch	†	Exterior Tap
○	Pull Card Switch	□	TV Point
▽	Batten Holder	□	Phone Point
⊙	Globe Light	□	HDMI Point
⊗	Exterior Light	□	Thermostat
⊛	Downlight	□	CO <sub>2</sub> Alarm
□	Single Socket	□	Smoke Alarm
□	Double Socket	□	Radiator
□	Spur Socket	□	Consumer Unit
□	Switching Plate	□	Exterior Meter Box

This plan is a guide and should be used for illustrative purposes only