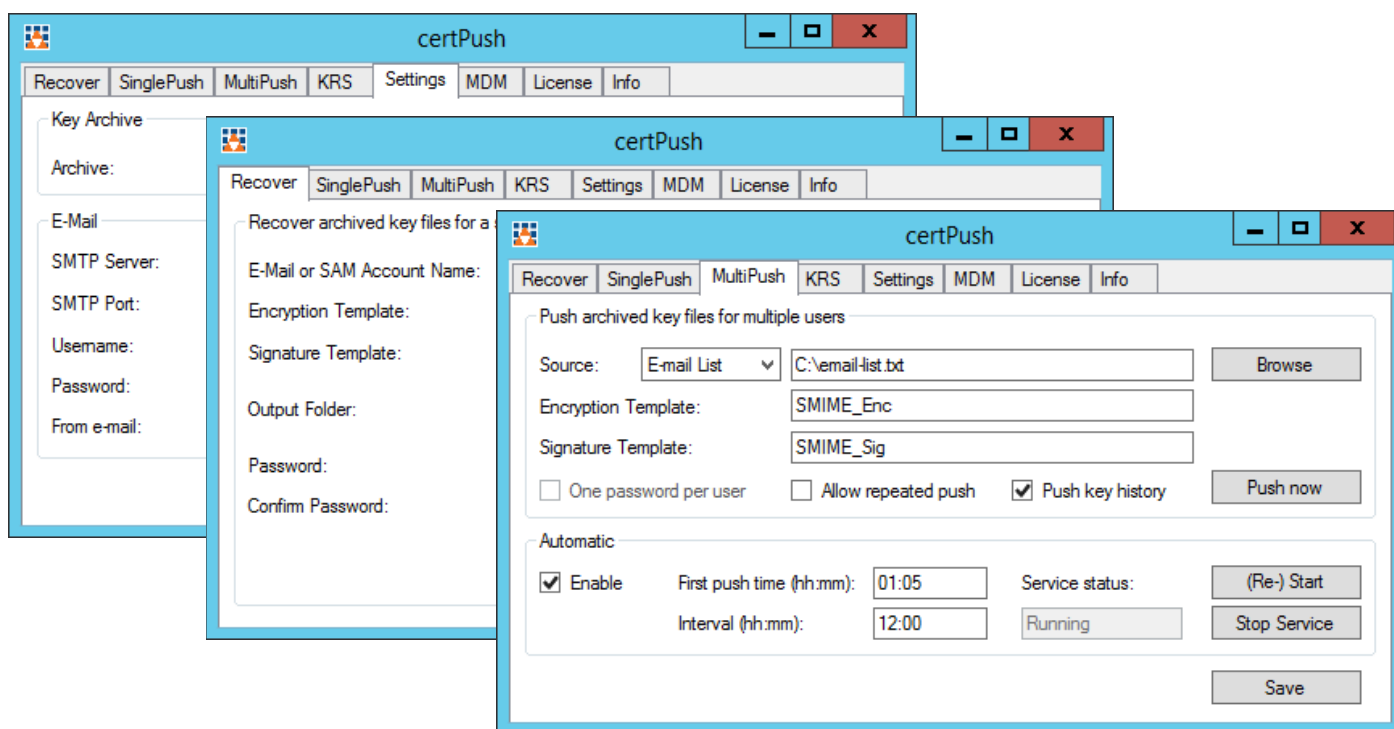


Secardeo certPush v2 is a key recovery and distribution service for archived private user keys. By this, X.509 certificates and private keys can be simply and securely distributed to all devices of a user in a protected PFX container. A user can for example then encrypt and decrypt his e-mails on his smartphone. certPush supports the recovery of single private keys and batch recoveries of private keys of multiple users. Secardeo certPush can either recover only the current certificate and private key of a user or the whole key history. Keys can be recovered from either Secardeo certEP (e.g. using public S/MIME certificates) or a Windows CA. certPush enables the automated key distribution to all mobile devices in an enterprise.

The following features are supported:

- Recovery of keys archived in Secardeo certEP v4 or a Windows CA by Key Recovery Agents
- Secure distribution of private keys to other clients (i.e. mobile devices) via e-mail or MDM upload
- Automatic key distribution based on a list of e-mail addresses or account names
- Periodic background distribution (certPush service)



### Supported Systems:

- Microsoft® Windows® Server 2008 R2, 2012, 2012 R2, 2016
- Microsoft® Windows® 7, 8, 10

### Supported CAs:

- Secardeo certEP v4 with any CA
- Microsoft® AD CS Enterprise CA

### Supported AD Versions:

- Microsoft® Active Directory 2008 R2, 2012, 2012 R2, 2016

### Supported Clients:

- Apple iOS 7, 8 (not with MDM Exchange profile)
- Google Android (Samsung Galaxy Sx with Exchange account)
- Microsoft® Windows® Phone 8.1, 10 (only with Exchange account)
- Blackberry 7, 10 (with BES & S/MIME Support Package)
- Microsoft® Windows® 7, 8, 10 (MS Outlook and many more)
- Apple Mac OS X (Apple Mail and more)
- Symantec TouchDown (for iOS and Android)
- Mozilla Thunderbird

### Supported MDM systems:

- VMware AirWatch v8
- MobileIron Core v9

### Software Requirements:

- Microsoft® .NET Framework 4.0

### Standards:

- X.509-Certificates and CRLs RFC 5280
- PKCS#12 RFC 7292
- CMS with PKCS#10 RFC 3852
- CMC RFC 5272

Further information on request.