



STELLAR LIGHTING

www.stellarlighting.co.uk

Fibre optic starlight panels

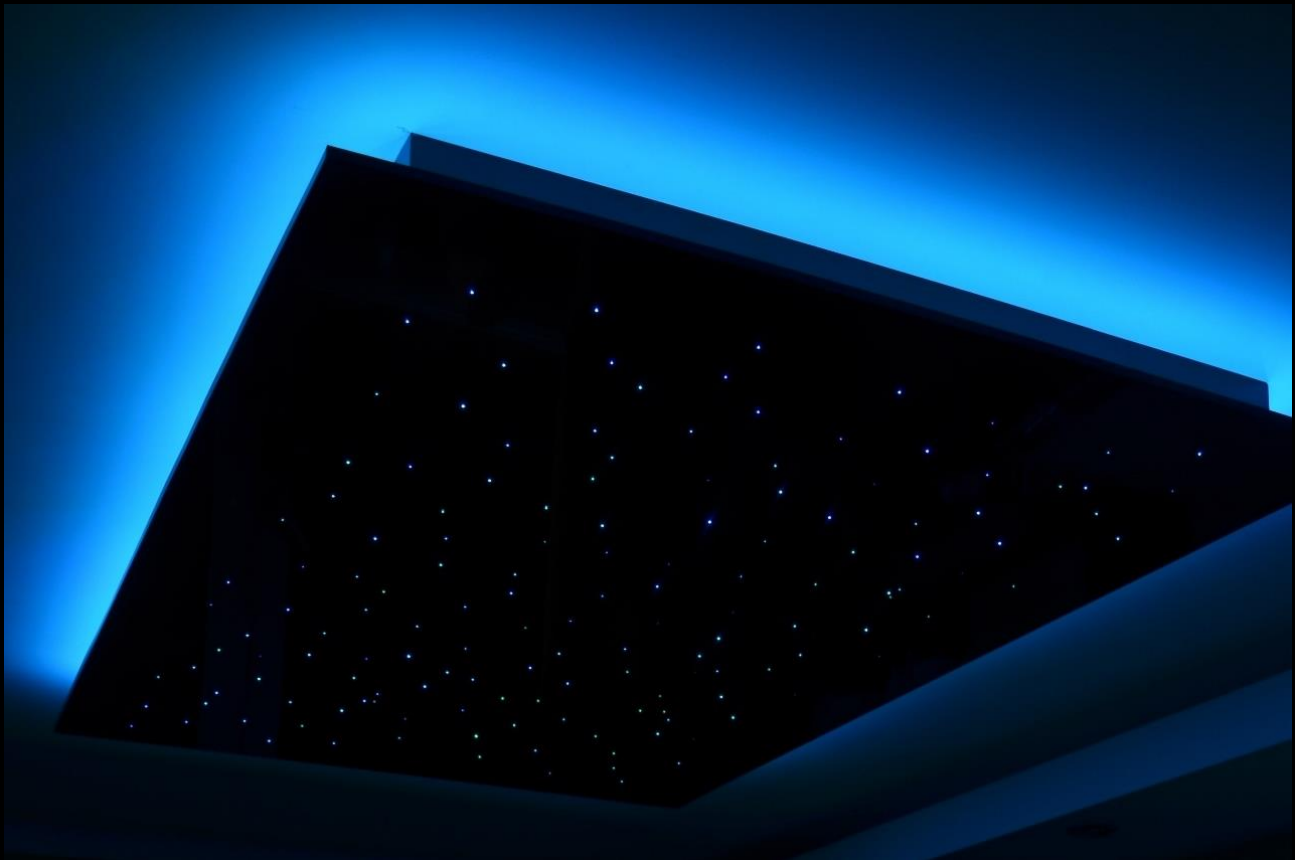
Installation guide



CHAPTER 1



Receiving your Stellar Lighting panel





Receiving your Stellar Lighting panel

Your Stellar Lighting fibre optic starlight panel will be delivered to you by courier at an agreed time.

When the panel arrives, inspect the packaging carefully and look for any signs of damage on the packaging. Panels are insured for delivery so if you notice any signs of damage, report it on site to the delivery person, take photos and follow their procedure for handling damaged parcels.

The protective packaging is robust so the panel is well protected.

Before unpacking, move the package to a location away from rain, where you have space to remove the packaging and the installation surface can be accessed easily.

Always place the packaging the correct way up according to the markings.

CHAPTER 2



Before you start





Before you start

- Ensure that the room has an available lighting circuit with a suitable wall switch. If your panel has edge lighting, you will need two separate lighting circuits.
- We recommend that the lighting circuits from the consumer unit or distribution board are comprised of twin and earth PVC insulated cable with a minimum conductor size of 1.5 mm².
- An appropriate protective device e.g. fuse or miniature circuit breaker should be installed at the consumer unit. We recommend a 6 A type B MCB for this purpose. If the supply circuit to the ceiling panel is not dedicated, your electrician can advise on protection arrangements.
- Before undertaking any electrical connection work, ensure the circuit is isolated at the consumer unit by turning off the MCB and, if practicable, locking it in the OFF position.
- Remove the packaging and place the panel upside-down panel on a soft surface to prevent damaging the surface.



Before you start

- If possible, connect the panel's light engine to a suitable power source and make sure it operates as expected.

CHAPTER 3



Familiarisation with your panel





Familiarisation with your panel

Your panel is constructed of two interlocking parts: a backing plate and the lighting panel.

The backing plate is a plain panel, made of PVC, and with pre-drilled holes in the front and side. It has a large hole in the centre for the wiring connections.

The lighting panel contains the light engine and optical fibres and is covered with a protective film.

We supply screws and plugs for the type of ceiling indicated at the point of purchase. Please check before installation that these fixtures are suitable for your ceiling.

To fit your panel, you will need to secure the backing plate to the ceiling, connect the lighting circuits, then secure the lighting panel to the backing plate, according to the instructions which follow.

CHAPTER 4



Securing the backing plate to the ceiling





Securing the backing plate to the ceiling

1. Establish the exact location and position of the panel and the backing plate on the ceiling. The hole in the middle of the backing plate should be aligned with the electrical outlet on the ceiling (Figures 1-3). If the pre-drilled screw holes aren't suitable, for example, if there is wiring or pipes in the way, drill alternative holes, making sure they are evenly spaced across the backing plate and that there are the same number.
2. Hold the panel firmly while securing the screw plugs and the screws in the drilled holes (Figures 4-6). In some cases, adhesive tape may help you in this process.



Figure 1

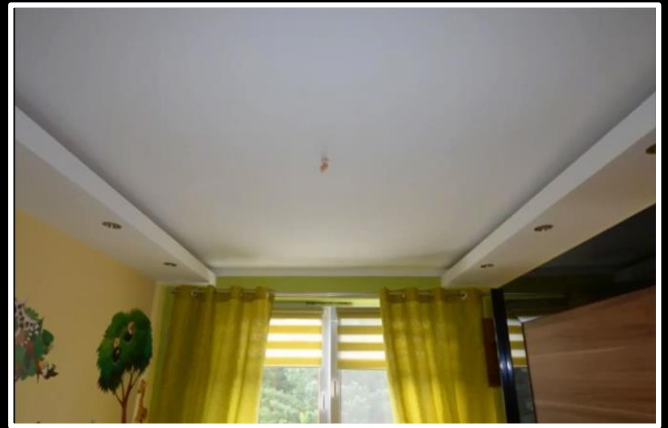


Figure 2



Figure 3



Figure 4



Figure 5



Figure 6

CHAPTER 5



Securing the lighting panel to the backing plate





Securing the lighting panel to the backing plate

3. Connect the mains outlet to the connector clips provided with the light engine (Figure 7). Alternatively, we can provide the light engines with UK plugs.
4. At this point, it is a good idea to test the panel by temporarily connecting the mains supply.
5. Re-isolate the mains supply to continue the installation.
6. Lift the starlight panel into its final position. The panel should fit around the backing plate (Figures 8-9).
7. Using assistance as necessary, secure the panel to the backing plate with the screws provided (Figures 10-11).
8. Remove the protective foil from the panel (Figure 12).
9. Enjoy!

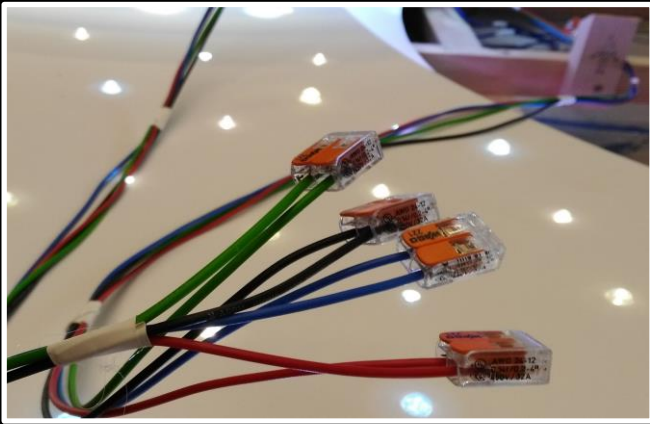


Figure 7



Figure 8



Figure 9



Figure 10



Figure 11



Figure 12

Notes

Please do take care while working at a height by carrying the tasks out in a safe manner. At least two people are required for the installation; however this is always subject to the dimensions of the panel and you may need additional help.

Electrical work should only be performed by trained and competent persons with sufficient skills and knowledge to avoid danger. If in any doubt, we recommend engaging the services of an approved electrician.

We do not take responsibility for any damage caused by improper installation.

The lighting panel is fragile and requires special attention and care during transport and installation.

The lighting panels should only be installed on dry and smooth surfaces. Wet surfaces (including fresh paint) contain moisture that could short circuit the panel.

If you have any questions, problems or comments regarding the installation or the operation of your Stellar Lighting fibre optic starlight panel, please contact us on

info@stellarlighting.co.uk



STELLAR LIGHTING

www.stellarlighting.co.uk