

SHIRT & BLOUSE

collection 2015

BROOK TAVERNER corporate tailoring

Prices included at the back
All prices subject to VAT



T: 01953 718719 F: 01953 718778
E: sales@waterfrontmanufacturing.co.uk
W: www.waterfrontmanufacturing.co.uk

SHIRT & BLOUSE

collection

BROOK TAVERNER corporate tailoring

THE 22 PIECE SHIRT & BLOUSE COLLECTION OFFERS:

MEN'S

100% SUPERFINE COTTON

ANDORA Long Sleeve Shirt 08 - 09 - 10 - 11

100% COTTON POPLIN

CHELFORD Slim Fit, Long Sleeve Shirt 13

CHESTER Long Sleeve Shirt 12 - 14

CHEADLE Long Sleeve Shirt 12

STRETCH COTTON BLEND

LUCCA Long Sleeve Shirt 17 - 18 - 19

COTTON RICH

ALBA Slim Fit, Long Sleeve Shirt 20 - 21

RAPINO Long Sleeve Shirt 23

ROSELLO Short Sleeve Shirt 24 - 25

RUFINA Long Sleeve Shirt 27

ROCELLA Short Sleeve Shirt 28 - 29

MANTOVA Long Sleeve Shirt 30 - 31

SAVONA Short Sleeve Shirt 32

WOMEN'S

100% SUPERFINE COTTON

VILLETA Long Sleeve Blouse 09 - 10 - 11

OZZERO Short Sleeve Blouse 08

100% COTTON POPLIN

TREVISO Long Sleeve Blouse 14 - 15

STRETCH COTTON BLEND

FRANCA Long Sleeve Blouse 16 - 17 - 18 - 19

COTTON RICH

PALENA Long Sleeve Blouse 22

PADULI Short Sleeve Blouse 24 - 25

PERANO Long Sleeve Blouse 26 - 27

PESCARA Short Sleeve Blouse 28

CAMPANIA Long Sleeve Blouse 31

LIGURIA Short Sleeve Blouse 32 - 33



designed to complement **OUR TAILORED RANGES**

Designed to complement our tailored ranges, our collection of **beautifully made, contemporary business shirts and blouses** is perfect for the modern corporate environment.

The collection offers coordinating men's and women's shirts and blouses in a fantastic range of easy-care and easy-to-iron fabrics – both 100% superfine cotton and cotton-rich blends. **Classic and slim fit** options are available, as well as **short and long sleeves** and button fastening or double cuffs.

Brand new to the range is a selection of long sleeve, slim fit shirts and blouses in a polyester/cotton stretch fabric, available in 5 stunning colourways with contrasting white collar, also with contrasting cuffs on the blouses. These styles bring a whole new direction for modern corporate clothing and match our tailoring perfectly!

Also updated is our range of **100% superfine cotton shirts and blouses** with double cuffs. **Available in white or blue herringbone and in three brand new stripe designs**, this continues to be the range of choice for end users looking for premium shirts and blouses. For the first time we also have a **women's short sleeve version** available!

We strongly believe in **attention to detail** – that's why our designers create up to date styles with the look, fit, feel and performance you expect and can rely on.

All fabrics meet **Oeko-Tex Standard 100 environmental requirements**.

Above: Men's Lucca shirt & women's Franca blouse.



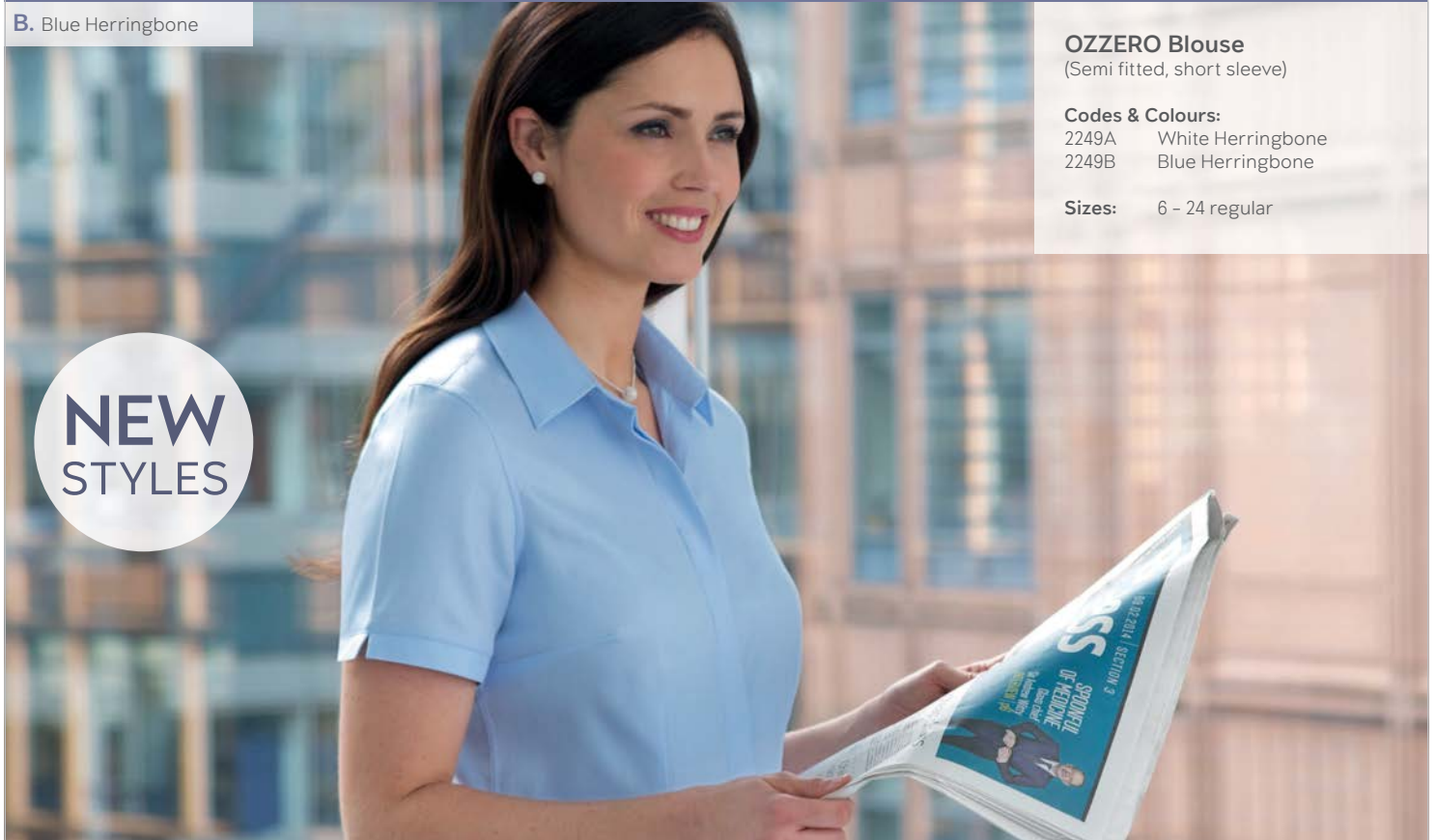
100% SUPERFINE COTTON EASY-TO-IRON SHIRTS & BLOUSES

WOMEN'S **VILLETA** (Long Sleeve, Double Cuff) **OZZERO** (Short Sleeve)
MEN'S **ANDORA** (Long Sleeve, Double Cuff)

- Matching long sleeve double cuff blouse (Villeta), shirt (Andora) & short sleeve blouse (Ozzero, White Herringbone & Blue Herringbone ladies only)
- Men's extra long sleeve available (White Herringbone & Blue Herringbone only)
- Removable metal collar stiffeners (men's Andora) • Taped seams
- Tailored in 100% cotton, ideal for any modern business environment
- Easycare, Easy-to-iron & Machine washable • Complementary silk knots (Villeta & Andora)



B. Blue Herringbone



OZZERO Blouse
(Semi fitted, short sleeve)

Codes & Colours:
2249A White Herringbone
2249B Blue Herringbone

Sizes: 6 - 24 regular

**NEW
STYLES**



A. White Herringbone



**LONGER
SLEEVE
LENGTH**
AVAILABLE



A. White Herringbone



B. Blue Herringbone

B. Blue Herringbone



VILLETA Blouse

(Semi fitted, long sleeve,)

Codes & Colours:

- 2247A White Herringbone
- 2247B Blue Herringbone
- 2247C Charcoal/White Stripe
- 2247D Raspberry Stripe
- 2247E Pink/Grey Stripe

Sizes: 6 - 24 regular

ANDORA Shirt

(Classic fit, long sleeve, double cuff)

Codes & Colours:

- 7656A White Herringbone
- 7656AL White Herringbone
Extra long sleeve 36.5"
- 7656B Blue Herringbone
- 7656BL Blue Herringbone
Extra long sleeve 36.5"
- 7656C Charcoal/White Stripe
- 7656D Raspberry Stripe
- 7656E Pink/Grey Stripe

Sizes: 14.5" - 20"

* Extra long sleeve 36.5" at size 15.5"

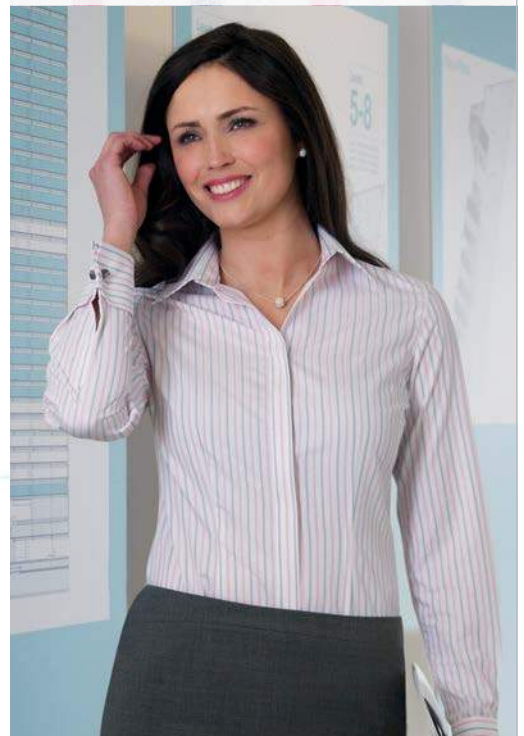


E. Pink/Grey Stripe

**NEW
FABRICS**



E. Pink/Grey Stripe



100% SUPERFINE COTTON EASY-TO-IRON SHIRTS & BLOUSES continued

WOMEN'S **VILLETA** (Long Sleeve, Double Cuff) **OZZERO** (Short Sleeve)
 MEN'S **ANDORA** (Long Sleeve, Double Cuff)

- Matching long sleeve double cuff blouse (Villeta), shirt (Andora) & short sleeve blouse (Ozzero, White Herringbone & Blue Herringbone ladies only)
- Men's extra long sleeve available (White Herringbone & Blue Herringbone only)
- Removable metal collar stiffeners (men's Andora) • Taped seams
- Tailored in 100% cotton, ideal for any modern business environment
- Easycare, Easy-to-iron & Machine washable • Complementary silk knots (Villeta & Andora)



D. Raspberry Stripe



**NEW
FABRICS**

VILLETA Blouse

(Semi fitted, long sleeve, double cuff)

Codes & Colours:

- 2247A White Herringbone
- 2247B Blue Herringbone
- 2247C Charcoal/White Stripe
- 2247D Raspberry Stripe
- 2247E Pink/Grey Stripe

Sizes: 6 - 24 regular

ANDORA Shirt

(Classic fit, long sleeve, double cuff)

Codes & Colours:

- 7656A White Herringbone
- 7656AL White Herringbone Extra long sleeve 36.5**
- 7656B Blue Herringbone
- 7656BL Blue Herringbone Extra long sleeve 36.5**
- 7656C Charcoal/White Stripe
- 7656D Raspberry Stripe
- 7656E Pink/Grey Stripe

Sizes: 14.5" - 20"

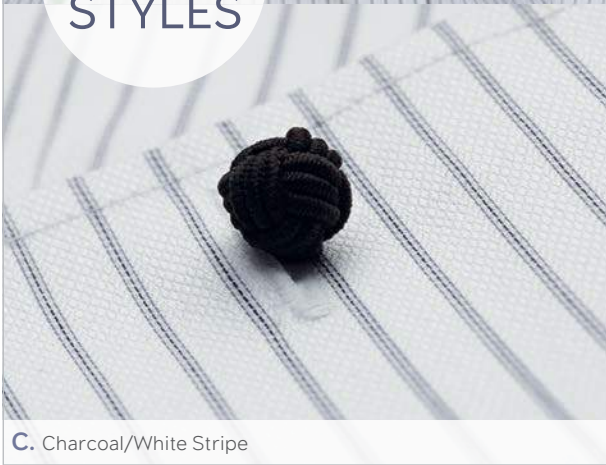
* Extra long sleeve 36.5" at size 15.5"



D. Raspberry Stripe



**NEW
STYLES**



C. Charcoal/White Stripe



100% COTTON POPLIN EASY-TO-IRON SHIRTS & BLOUSE

MEN'S CHESTER (Long Sleeve, Double Cuff) & CHEADLE (Long Sleeve, Single Cuff)

- 100% Cotton • Long sleeve • Double cuff (Chester & Chelford)
- Single cuff & chest pocket (Cheadle) • Extra long sleeve available (Cheadle White only)
- Removable metal collar stiffeners • Taped seams
- Easycare, Easy-to-iron & Machine washable
- All match with Treviso women's blouse (pages 14 & 15)



CHEADLE Shirt

(Classic fit, chest pocket, single cuff,)

Codes & Colours:

| | |
|--------|--------------------------|
| 7641A | White |
| 7641AL | White |
| | Extra long sleeve 36.5** |
| 7641B | Blue |

Sizes: 14.5" - 20"

* Extra long sleeve 36.5" at size 15.5"

CLASSIC

fit

BREAST POCKET
SINGLE CUFF

CHESTER Shirt

(Classic fit, double cuff)

Codes & Colours:

| | |
|-------|-------|
| 7642A | White |
| 7642B | Blue |

Sizes: 14.5" - 20"

CLASSIC

fit

DOUBLE CUFF

CHELFORD Shirt

(Slim fit, double cuff, rear darts)

Codes & Colours:

7643A White
7643B Blue

Sizes: 14.5" - 18"



SLIM FIT 100% COTTON POPLIN EASY-TO-IRON SHIRTS MEN'S CHELFORD (Long Sleeve, Double Cuff)

- 100% Cotton • Long sleeve • Slim fit, twin rear darts for a defined silhouette
- Double cuff (Chelford & Chester) • Removable metal collar stiffeners
- Taped seams • Easycare, easy-to-iron & Machine washable
- Coordinates with Treviso women's blouse (pages 14 & 15)



100% COTTON POPLIN EASY-TO-IRON SHIRTS & BLOUSE continued WOMEN'S TREVISO (Long sleeve)

- 100% Cotton • Long sleeve • Semi-fitted
- Single 3 button cuff • Classic button up collar
- Coordinates with Chester, Cheadle & Chelford men's shirts (on previous pages)
- Easycare, Easy-to-iron & Machine washable



COORDINATING
MEN'S &
WOMEN'S
STYLES

TREVISO Blouse (Semi fitted, long sleeve)

Codes & Colours:

2244A White
2244B Blue

Sizes: 6 - 24 regular

CHESTER Shirt

(Classic fit, double cuff)

SEMI
fitted
3 BUTTON
CUFF

A. White

SEMI
fitted
3 BUTTON
CUFF



B. Blue

SLIM FIT STRETCH FABRIC EASY-TO-IRON SHIRTS & BLOUSES

WOMEN'S FRANCA (Long sleeve) / MEN'S LUCCA (Long sleeve)

- 57% Polyester / 39% Cotton / 4% Elastane • Slim fit • Long sleeve
- Contrast white rounded collar and contrast white single button cuff (Franca)
- Fly front (Franca) • Contrast white collar with single 2 button cuff (Lucca)
- Twin rear darts for defined silhouette
- Easycare, Easy-to-iron & Machine washable



FRANCA Blouse

(Semi fitted, long sleeve)

Codes & Colours:

| | |
|-------|---|
| 2251A | White with front panel design (Franca only) |
| 2251B | Sky Blue |
| 2251C | Blue stripe |
| 2251D | Lilac stripe |
| 2251E | Red stripe |

Sizes: 6 - 24 regular

LUCCA Shirt

(Slim fit, long sleeve)

Codes & Colours:

| | |
|-------|--------------|
| 7658B | Sky Blue |
| 7658C | Blue stripe |
| 7658D | Lilac stripe |
| 7658E | Red stripe |

Sizes: 14.5" - 18"

STRETCH
FABRICS

NEW
STYLES

A. White with front panel design

B. Sky Blue



SLIM
fit
CONTRAST
COLLAR



B. Sky Blue



BEAUTIFUL
NEW
FABRICS





SLIM
fit
CONTRAST
COLLAR



C. Blue Stripe

NEW
STYLES

FRANCA Blouse
(Semi fitted, long sleeve)

- Codes & Colours:**
- 2251A White with front panel design
 - 2251B Sky Blue
 - 2251C Blue stripe
 - 2251D Lilac stripe
 - 2251E Red stripe

Sizes: 6 - 24 regular

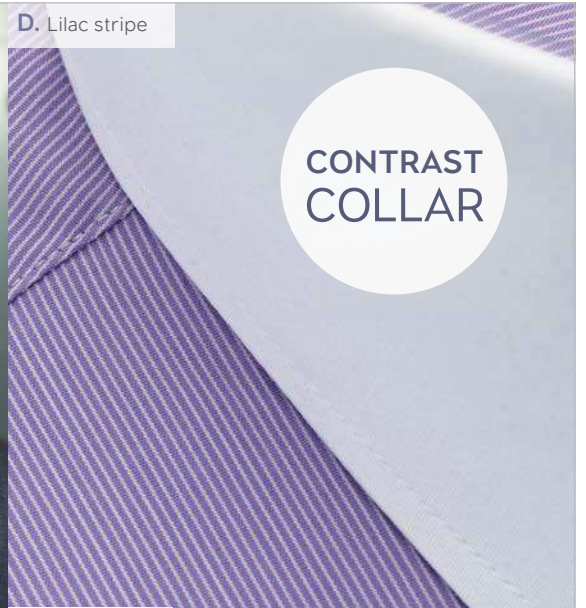
LUCCA Shirt
(Slim fit, long sleeve)

- Codes & Colours:**
- 7658B Sky Blue
 - 7658C Blue Stripe
 - 7658D Lilac stripe
 - 7658E Red stripe

Sizes: 14.5" - 18"

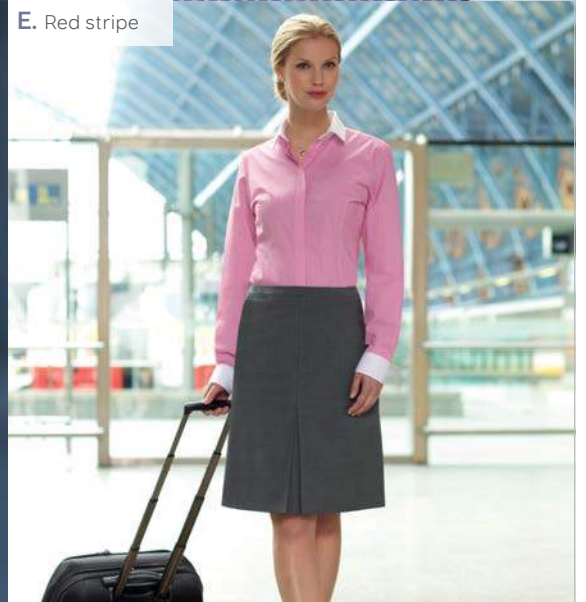
C. Blue stripe





D. Lilac stripe

CONTRAST COLLAR



E. Red stripe



E. Red stripe

SLIM FIT STRETCH FABRIC EASY-TO-IRON SHIRTS & BLOUSES continued WOMEN'S FRANCA (Long sleeve) / MEN'S LUCCA (Long sleeve)

- 57% Polyester / 39% Cotton / 4% Elastane • Slim fit • Long sleeve
- Contrast white rounded collar and contrast white single button cuff (Franca)
- Fly front (Franca) • Contrast white collar with single 2 button cuff (Lucca)
- Twin rear darts for defined silhouette
- Easycare, Easy-to-iron & Machine washable



COTTON RICH EASY-TO-IRON SHIRTS & BLOUSES

MEN'S ALBA (Slim fit)

- Cotton-rich • 55% Cotton / 45% Polyester
- Effortlessly stylish, Slim fit, twin rear darts for a defined silhouette
- Semi cutaway collar to look fantastic with or without a tie, long sleeve, single 2 button cuff
- Matches men's Rapino & Rosello and women's Palena & Paduli (on pages 22, 23, 24 & 25)
- Easycare, easy-to-iron & Machine washable



ALBA Shirt

(Slim fit, long sleeve)

Codes & Colours:

7640A White

Sizes: 14"-18"

NEW
AVAILABLE
FROM SIZE 14"

SLIM
fit
2 BUTTON CUFF

A. White

COTTON
RICH
FABRIC

SLIM
fit

2 BUTTON CUFF



COTTON RICH EASY-TO-IRON SHIRTS & BLOUSES continued WOMEN'S PALENA (Long sleeve) / MEN'S RAPINO (Long sleeve)

- Cotton-rich • 55% Cotton / 45% Polyester
- Specifically designed for fit, comfort and style with long sleeve (Palena)
- Effortlessly stylish classic fit, long sleeve, single cuff and chest pocket (Rapino)
- Coordinates with men's Alba slim fit shirt (on pages 20 -21) and Rosello & Paduli (on pages 24-25)
- Easycare, Easy-to-iron & Machine washable



PALENA Blouse

(Semi fitted, long sleeve)

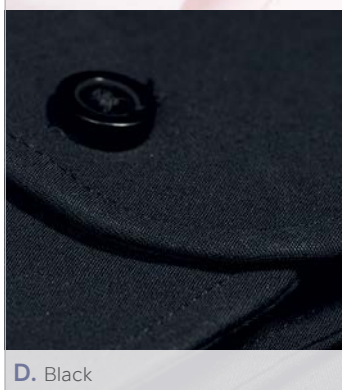
Codes & Colours:

| | |
|-------|-------|
| 2214A | White |
| 2214B | Pink |
| 2214D | Black |
| 2214E | Blue |

Sizes: 6 - 24 regular



B. Pink



D. Black

EFFORTLESSLY
Stylish



A. White

RAPINO Shirt
(Classic fit, long sleeve)

Codes & Colours:

7539A White
7539B Pink
7539D Black
7539E Blue

Sizes: 14.5" - 20"



CLASSIC
fit
SINGLE CUFF

IMPROVED
BLUE
COLOURWAY



E. Blue

COTTON RICH EASY-TO-IRON SHIRTS & BLOUSES continued MEN'S ROSELLO (Short sleeve) / WOMEN'S PADULI (Short sleeve)

- Cotton-rich • 55% Cotton / 45% Polyester
- Short sleeve classic fit shirt with chest pocket • Short sleeve blouse with adjustable cuff
- A smart choice for the modern businessman or woman
- Coordinates with men's Alba slim fit shirt (on pages 20-21) and Rapino & Palena (on pages 22-23)
- Easycare, Easy-to-iron & Machine washable



ROSELLO Shirt

(Classic fit, short sleeve)

Codes & Colours:

| | |
|-------|-------|
| 7541A | White |
| 7541B | Pink |
| 7541D | Black |
| 7541E | Blue |

Sizes: 14.5" - 20"

PADULI Blouse

(Semi fitted, short sleeve)

Codes & Colours:

| | |
|-------|-------|
| 2216A | White |
| 2216B | Pink |
| 2216D | Black |
| 2216E | Blue |

Sizes: 6 - 24 regular



SHORT SLEEVE
Adjustable
cuff



PADULI adjustable cuff detail



CLASSIC
fit
SHORT SLEEVE

D. Black

B. Pink

A. White



IMPROVED
BLUE
COLOURWAY

E. Blue



COTTON RICH EASY-TO-IRON SHIRTS & BLOUSES

WOMEN'S PERANO (Long sleeve) / MEN'S RUFINA (Long sleeve)

- Cotton-rich • 60% Cotton / 40% Polyester
- Specifically designed for fit, comfort and style with long sleeve (Perano)
- Effortlessly stylish classic fit, long sleeve, single cuff and chest pocket (Rufina)
- Matches men's Roccella and women's Pescara (on pages 28-29)
- Easycare, Easy-to-iron & Machine washable



PERANO Blouse

(semi fitted, long sleeve)

Codes & Colours:

- 2215A White/Grey Stripe
- 2215B Pink/Grey Stripe
- 2215C Blue/White Stripe

Sizes: 6 - 24 regular

RUFINA Shirt

(Classic fit, long sleeve)

Codes & Colours:

- 7540A White/Grey Stripe
- 7540B Pink/Grey Stripe
- 7540C Blue/White Stripe

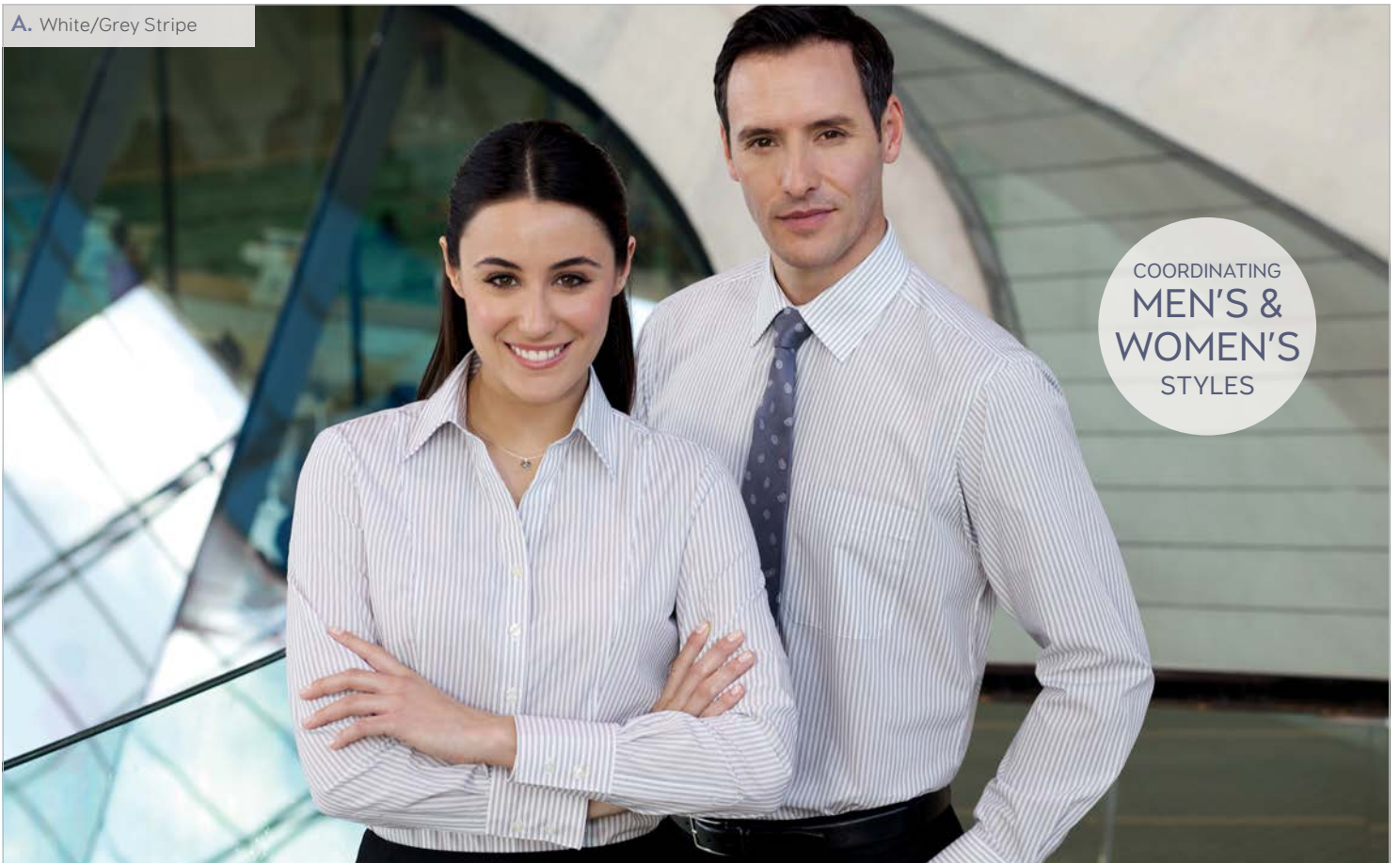
Sizes: 14.5" - 20"

SEMI
fitted
SINGLE CUFF

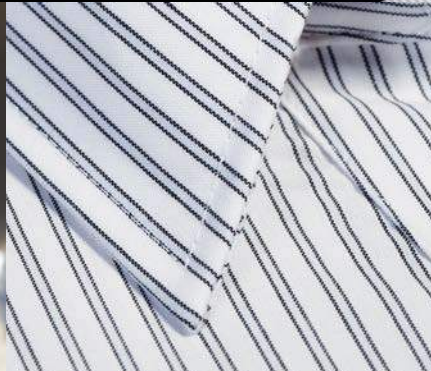
BEAUTIFUL
STRIPED
DESIGNS

B. Pink/Grey Stripe

A. White/Grey Stripe



COORDINATING
MEN'S &
WOMEN'S
STYLES



A. White/Grey Stripe



B. Pink/Grey Stripe



C. Blue/White Stripe

C. Blue/White Stripe



C. Blue/White Stripe

PESCARA Blouse
(Semi fitted, short sleeve)

Codes & Colours:
2217A White/Grey Stripe
2217B Pink/Grey Stripe
2217C Blue/White Stripe

Sizes: 6 - 24 regular

ROCCELLA Shirt
(Classic fit, short sleeve)

Codes & Colours:
7542A White/Grey Stripe
7542B Pink/Grey Stripe
7542C Blue/White Stripe

Sizes: 14.5" - 20"



A. White/Grey Stripe



C. Blue/White Stripe



B. Pink/Grey Stripe



A. White/Grey Stripe

B. Pink/Grey Stripe

CLASSIC
fit
SHIRT



COTTON RICH EASY-TO-IRON SHIRTS & BLOUSES
MEN'S ROCCELLA (Short sleeve) / **WOMEN'S PESCARA** (Short sleeve)

- Cotton-rich • 60% Cotton / 40% Polyester
- Short sleeve classic fit shirt with chest pocket • Short sleeve blouse with adjustable cuff
- A smart choice for the modern business man or woman
- Matches men's Rufina and women's Perano (on pages 26-27)
- Easycare, Easy-to-iron & Machine washable



COTTON RICH EASY-TO-IRON SHIRTS & BLOUSES

MEN'S MANTOVA (Long sleeve) / WOMEN'S CAMPANIA (Long sleeve)

- Cotton-rich long and short sleeve blouses • 55% Cotton, 45% Polyester
- Flattering fit, casually stylish, matches men's Savona and women's Liguria
- Contrast inner collar and cuff, double button fastening
- Easycare, Easy-to-iron & Machine washable



MANTOVA Shirt

(Classic fit, long sleeve)

Codes & Colours:

7594A White
7594B Sky Blue/Magenta Stripe
7594C Black/White Stripe

Sizes: 14.5" - 20"

CAMPANIA Blouse

(semi fitted, long sleeve)

Codes & Colours:

2239A White
2239B Sky Blue/Magenta Stripe
2239C Black/White Stripe
2239D Candy Stripe

Sizes: 6 - 24 regular



C. Black/White Stripe

B. Sky Blue/Magenta Stripe



COORDINATING
MEN'S &
WOMEN'S
STYLES



A. White



B. Sky Blue/Magenta Stripe



C. Black/White Stripe



D. Candy Stripe (Campania only)

A. White

LIGURIA Blouse

(Semi fitted, Short sleeve)

Codes & Colours:

- 2240A White
- 2240B Sky Blue/Magenta Stripe
- 2240C Black/White Stripe
- 2240D Candy Stripe

Sizes: 6 - 24 regular

SAVONA Shirt

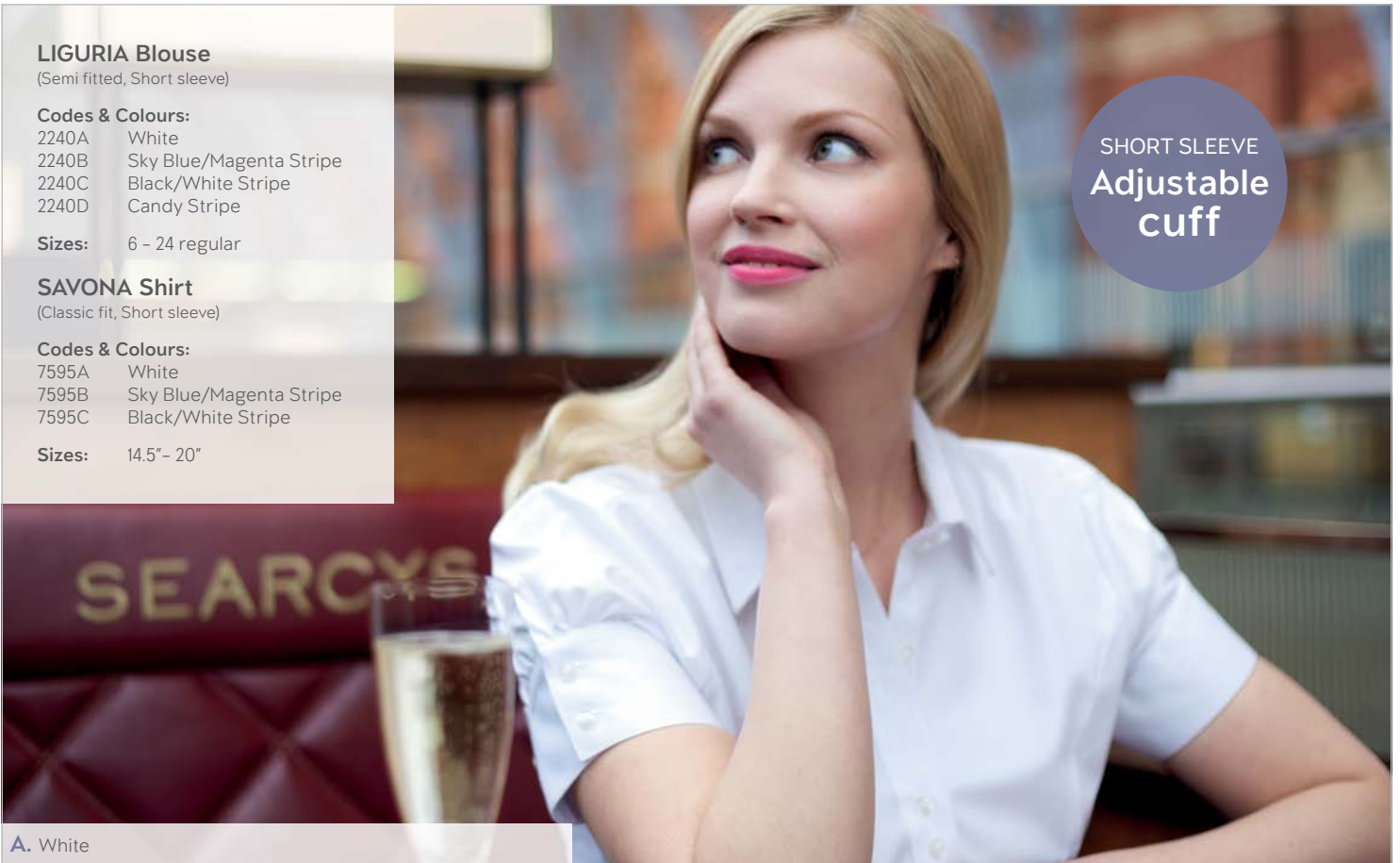
(Classic fit, Short sleeve)

Codes & Colours:

- 7595A White
- 7595B Sky Blue/Magenta Stripe
- 7595C Black/White Stripe

Sizes: 14.5" - 20"

SHORT SLEEVE
Adjustable
cuff



A. White



CLASSIC
fit
SHIRT



A. White



B. Sky Blue/Magenta Stripe



C. Black/White Stripe



D. Candy Stripe (Liguria only)

C. Black/White Stripe

D. Candy Stripe (Liguria only)

SEMI
fitted
ADJUSTABLE
CUFF

CONTRAST
COLLAR &
CUFF

COTTON RICH EASY-TO-IRON SHIRTS & BLOUSES continued
LIGURIA (Short sleeve) / **SAVONA** (Short sleeve)

- Cotton-rich short sleeve shirts • 55% Cotton, 45% Polyester
- Casually stylish, matches women's Campania and men's Mantova
- Easycare, Easy-to-iron & Machine washable



Prices

| Men's | | Price | |
|--------------------|---------------|--------------|------------------|
| Andora Shirt | 7656A/B/C/D/E | £27.95 | |
| Cheadle LS Shirt | 7641A/B | £23.95 | |
| Chester LS Shirt | 7642A/B | £23.95 | |
| Chelford LS Shirt | 7643A/B | £23.95 | |
| Lucca LS Shirt | 7658B/C/D/E | £18.95 | |
| Alba LS Shirt | 7640A | £14.95 | |
| Rapino LS Shirt | 7539A/B/E | £14.95 | |
| (in black) | 7539D | £15.95 | |
| Rosello SS Shirt | 7541A/B/E | £14.50 | |
| (in black) | 7541D | £15.50 | |
| Rufina LS Shirt | 7540A/B/C | £16.50 | |
| Roccella SS Shirt | 7542A/B/C | £15.95 | |
| Mantova LS Shirt | 7594A/B/C | £18.95 | |
| Savona SS Shirt | 7595A/B/C | £17.95 | |
| Women's | | Price | Price 22+ |
| Ozzero SS Blouse | 2249A/B | £23.95 | £27.50 |
| Viletta LS Blouse | 2247A/B/C/D/E | £26.50 | £29.95 |
| Treviso LS Blouse | 2244A/B | £20.50 | £23.50 |
| Franca Blouse | 2251A/B/C/D/E | £18.95 | £21.95 |
| Palena LS Blouse | 2214A/B/E | £14.50 | £16.50 |
| (in black) | 2214D | £15.50 | £17.50 |
| Paduli SS Blouse | 2216A/B/E | £13.95 | £15.95 |
| (in black) | 2216D | £14.95 | £16.95 |
| Perano LS Blouse | 2215A/B/C | £16.50 | £18.95 |
| Pescara SS Blouse | 2217A/B/C | £15.95 | £17.95 |
| Campania LS Blouse | 2239A/B/C/D | £18.95 | £21.95 |
| Liguria SS Blouse | 2240A/B/C/D | £17.95 | £20.95 |

Prices subject to VAT