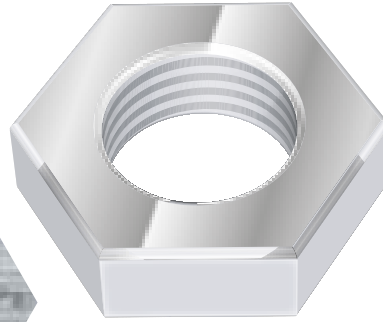


# Ensign Court, Tower Hamlets, London



Value £250,500

Build period 14 weeks

Client Engie

## Contents:

- ✓ 3no.off Skid assemblies 4.0 x 3.5 x 3.0 metres high each
- ✓ CAS site assembly team
- ✓ Modular gas fire boilers 300Kw
- ✓ Combined heat & power unit 38Kw
- ✓ Circulating twin head pumps
- ✓ Pressurisation unit c/w expansion vessels
- ✓ 2no.off 4,000 litres Thermal stores
- ✓ 8,000 litres cold water storage tank
- ✓ Packaged cold water booster set
- ✓ Combined air & dirt separator
- ✓ Chemical dosing pot
- ✓ LTHW Heating, gas, & domestic hot & cold water services
- ✓ Thermal insulation & protective cladding
- ✓ BMS Controls & wiring

See reverse for schematic arrangement and general layout.

