

TODD

Hospitality,
Leisure + Tourism

TODD ARCHITECTS + PLANNERS
TODDARCH.COM

Hospitality, Leisure + Tourism

Buildings, in which we gather, eat, play and holiday, have an ever increasingly important role to play in lives that are so dominated by the pressures of modern day working. The quality of these spaces is fundamentally important in allowing us to relax to enjoy our free time.

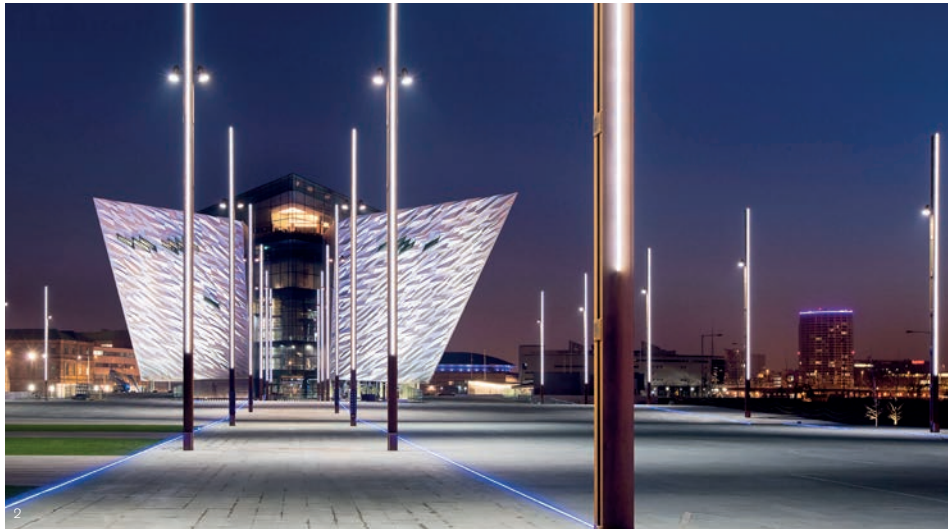
It is a sector that covers a broad range of building types, linked by a demand for design flair, where if not carefully considered and simply following current fashions, can quickly become out dated. Indeed many of our commissions involve refurbishments and the 'freshening' up of existing properties.

The growth of tourism in Ireland has afforded the practice the opportunity to establish itself within the burgeoning hotel market. We are retained by Whitbread, to roll out their Premier Inn brand throughout Ireland, have completed schemes for Park Inns (Radisson Group), Ibis and Jury's, and are engaged in an ongoing basis in the phased redevelopment of the La Mon House Hotel & Country Club. Our involvement in this area has also extended into England, where we have completed a 220 bed hotel for Jury's in Bradford and are presently delivering a 200 bed aparthotel for Marlin Apartments in Waterloo, London.

Our leisure experience includes the successful completion of projects for a diverse range of clients from Belvoir Golf Club in Belfast to Down Royal Racecourse in Lisburn and Irishtown Stadium in Dublin. In 2014 we completed a high profile reconfiguration of the Eton Manor complex within the Queen Elizabeth Olympic Park, into a new hockey and tennis centre of excellence.

Our most immediately recognisable project in the field is Titanic Belfast, the iconic tourist landmark, within Titanic Quarter, Europe's largest waterfront development. The building opened to international acclaim in 2012. In 2013 we were appointed to another major riverside project in the city, the Waterfront Conference and Exhibition Centre, extending the award winning Waterfront Hall.





Hospitality, Leisure + Tourism

- (1) Bavor Park Golf Club, Belfast
- (2) Dame's Gourmet Sandwich and Coffee Shop, Belfast
- (3) Jury's Inn, Bedford
- (4) Down Royal Race Course, Lisburn, main entrance

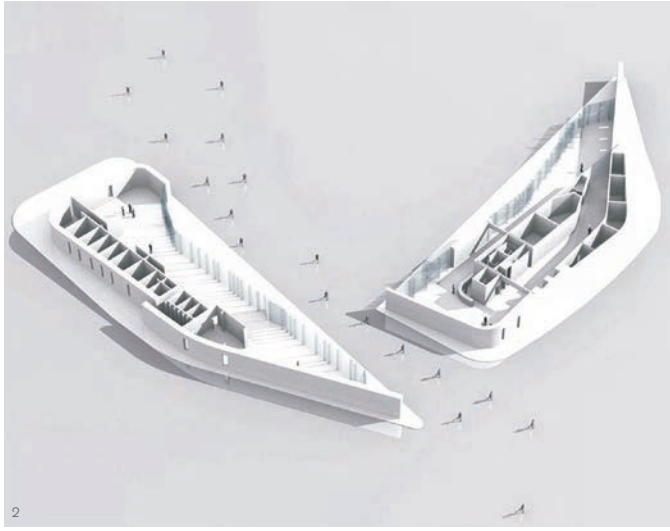
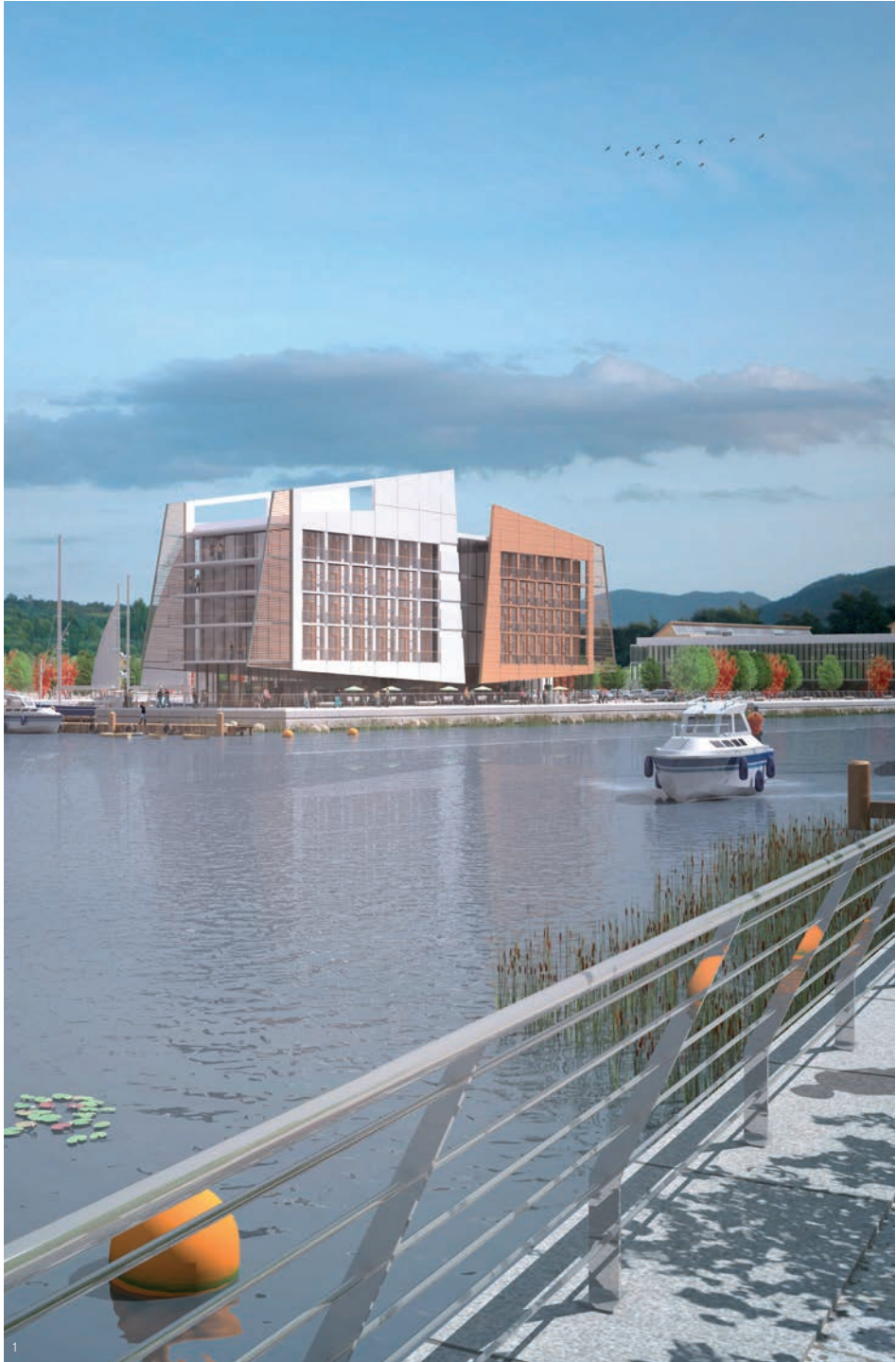


- (5) Down Royal Race Course, Lisburn, bar
- (6) St Malachi's Church of Ireland, Parish Hall, Hillsborough
- (7) La Mon House Hotel and Country Club, Belfast
- (8) Inshinnon Stadium, Ringsend, Dublin
- (9) Bengal Brasserie II, Lisburn Road, Belfast





- Hospitality, Leisure + Tourism**
- (1) Apartment-Hotel, Westminster Bridge Road, London
 - (2) Police Service Memorial, Birmingham
 - (3) Visitors Centre, ARCC21, Alternative Energy Centre, Belfast
 - (4) Belfast Waterfront Exhibition & Conference Centre
 - (5) Lee Valley Hockey & Tennis Centre, Queen Elizabeth Olympic Park, London



Contact

Offices

Belfast

2nd Floor, Titanic House
6 Queens Road, Belfast, BT3 9DT
T +44 (0)28 9024 5587
F +44 (0)28 9023 3363
E info@toddarch.co.uk

Dublin

11 Pembroke Lane
Dublin 2, D02 CX82
T +353 (0)1 6620 500
F +353 (0)1 6620 501
E admin@toddarch.ie

London

1st Floor
2 Stephen Street, Fitzrovia
London, W1T 1AN
T +44(0)20 3457 0976
E info@toddarch.co.uk

Directors

Paul Crowe
BA (Hons) DipArch RIBA MRIAI

Peter Minnis
BSc DipArch RIBA

Peter Moran
BSc (Hons) DipArch RIBA

Andrew Murray
BSc (Arch) BArch RIBA