



INNATE IMMUNITY

Dendritic Cells

Part of AbD Serotec
Innate Immunity Range

Research Areas

- Apoptosis & Cell Viability
- Complement
- Cytokines & Chemokines
- Pattern Recognition Receptors
- Toll-like Receptors

Cell Types

- **Dendritic Cells**
- Macrophages
- NK Cells & Receptors

Application specific antibodies and reagents for immunological research

AbD Serotec offers an extensive range of antibodies against dendritic cell markers:

- The range covers all classical dendritic cell markers such as CD11c and CD205 (DEC-205)
- Antibodies available against markers of less well known dendritic cell subtypes such as:
 - Inflammatory/Monocyte derived dendritic cells - CD14, CD209 (DC-SIGN) and iNO5
 - Dermal dendritic cells - CD45
 - Plasmacytoid dendritic cells - TLR7 and CD289 (TLR9)
- Wide application range, with a focus on Flow Cytometry, Immunohistochemistry and Western Blotting
- Species focus of human, mouse and rat

Featured Product: Anti-human dendritic cells marker antibody CD205 (MCA2258)

Mouse anti-human CD205 (MCA2258), clone MG38, is a multi-lectin receptor predominantly expressed by dendritic cells in humans. MCA2258 is recommended for detection of dendritic cells by Flow Cytometry and Immunohistochemistry (frozen sections).

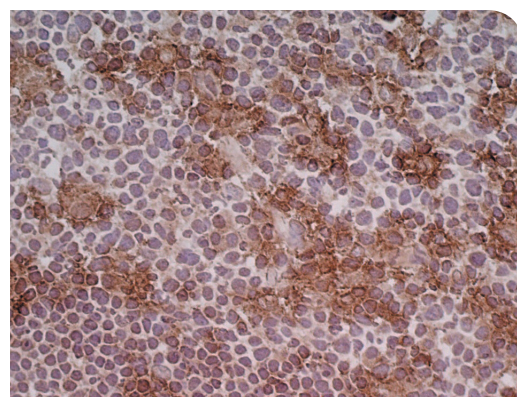
Citations: 5

Applications:

Flow Cytometry, Immunohistochemistry - frozen and Immunoprecipitation

Related Products:

Mouse IgG2b negative control (MCA691), mouse anti-human CD209 (MCA2318, clone MR-1), goat anti-mouse IgG (Fc): HRP (STAR120P)



Anti-human CD205 (MCA2258) Immunoperoxidase staining

Human tonsil cryosection stained with mouse anti-human CD205 antibody (MCA2258). Visualized using HISTAR Detection System (STAR3000).

AbD Serotec offers a broad range of products for studying dendritic cells. A selection of products is shown in the table below, for a full product listing go to abdserotec.com/dendritic

Anti-Human

Specificity	Clone	Formats	Applications	Product Code**
CD1a	NA1/34-HLK	Pur, A488, A647, Biot, FITC, RPE	FC, IHC-F	MCA80
CD1c	L161	Pur	FC, IHC-F, IP	MCA694T
CD11b	ICRF44	Pur, A647, A700, Az Fr, FITC, RPE, RPE-A647	FC, FN, IHC-F*, IP	MCA551
CD11c	BU15	Pur, A488, A647, FITC, RPE	FC, IHC-F*, IP	MCA2087
CD123	6H6	Pur	FC, IHC-F, IP, WB	MCA1263T
CD127	11592	Pur, A488, A647, FITC	FC	HCA145
CD14	UCHM1	Pur, A647, APC, Biot, FITC, LE, RPE	FC, FN, IF/ICC, IHC-F*, IP	MCA596
CD14	TÜK4	Pur, A647, A700, Biot, FITC, LE, PB, RPE, RPE-A647, RPE-A750	E, FC, FN, WB	MCA1568
CD14	MEM-18	Pur, FITC, RPE	E, FC, IP, WB*	MCA2185
CD14	61D3	RPE-Cy5, RPE-Cy5.5	FC	MCA2804
CD141	QBEND/40	S/N	FC, IHC-F, IHC-P*	MCA641
CD16	DJ130c	Pur, A488, A647, A700, Biot, RPE	FC, IHC-F, IHC-P*	MCA2537
CD205	MG38	Pur, FITC, LE, RPE	FC*, IHC-F, IP	MCA2258
CD205	HD30	Pur, LE, RPE	FC, IHC-F, WB	MCA4755
CD209	MR-1	Pur, A488, A647, Biot, FITC, LE, RPE	FC, FN, IF/ICC	MCA2318
CD304	1B3	Az Fr	WB	MCA5181Z
CD31	WM59	Pur, A647, Biot, FITC, RPE	FC, IP	MCA1738
CD45RA	F8-11-13	Pur, A700, Az Fr, Biot, FITC, PB, RPE, RPE-A647	FC, IHC-F, IHC-P	MCA88
CD45RA	Bu78	Pur, FITC	FC	MCA2508
CD48	MEM-102	Pur, APC, FITC, RPE	FC, IF/ICC, IHC-F, IHC-P, WB*	MCA1053G
CD49d	44H6	Pur, A647, Biot, FITC, LE, RPE	FC, IHC-F*, FN	MCA923
CD83	HB15e	Pur, A488, A647, FITC, RPE	FC, IF/ICC, IHC-F, IHC-P*, IP	MCA1582
CD289	5G5	Pur	FC*, IHC-F, IHC-P, WB	MCA2265
TLR7	4F4	Pur	E, WB	MCA-2702GA

Anti-Mouse

Specificity	Clone	Formats	Applications	Product Code**
CD11b	M1/70.15	Pur, A488, A647, A700, Biot, FITC, LE, RPE, RPE-A647, RPE-A750, RPE-Cy5	FC, FN, IF/ICC, IHC-F, IP, IHC-P*	MCA74
CD11b	5C6	Pur, FITC, LE, RPE	FC, FN, IF/ICC, IHC-F, IP	MCA711
CD123	5B11	Pur, A647	FC, IF/ICC	MCA2353
CD127	SB/199	Pur, A488, A647, FITC	FC	MCA2306
CD205	NLDC-145	A488, A647, FITC, S/N	FC, IHC-F	MCA949
TLR7	Polyclonal	Pur	WB	AHP867
CD289	Polyclonal	Pur	IHC-P, WB	AAM74
CD86	PO3	Pur, A488, A647, FITC, RPE	FC	MCA2463
CD86	RMMP-2	Pur, FITC	FC	MCA1587T
CD13	R3-63	Pur, A647, Biot, FITC, LE, RPE	FC, FN, IF/ICC, IHC-F, IHC-P*	MCA2183
CD13	ER-BMDM1	Pur, A488	FC, IHC-F	MCA2395
CD80	RM80	Pur, A488, A647, FITC, LE, RPE	FC, FN, IHC-F	MCA2462
CD83	3D11	Pur, A488, A647, FITC, RPE	FC	MCA2747
CD252	OX-89	Pur, Az Fr	FC, FN, IHC-F	MCA1881
CD273	TY25	Pur, A488, A647, FITC, PB, RPE	FC, IHC-F, IP	MCA2465
CD274	MIH6	Pur, A488, A647, FITC, LE	FC, FN, IHC-F, IP	MCA2626

Anti-Rat

Specificity	Clone	Formats	Applications	Product Code**
CD43	W3/13	Pur, Biot, FITC, RPE	FC, IHC-F, IHC-P*	MCA54G
CD80	3H5	Pur, A488, A647, FITC	FC, IHC-F, IP	MCA2873
CD86	OX-48	Pur, FITC, Biot, RPE	FC	MCA2121GA
CD86	24F	Pur, A488, A647, FITC, LE, RPE	FC, FN, IHC-F, IP	MCA2874
CD200	OX-2	Pur, FITC, RPE	EM, FC, IF/ICC, IHC-F, IP	MCA44R
CD200R1	OX-102	Pur, Biot, FITC, LE, RPE	FC, FN, IHC-F, IP, WB	MCA1959

*Requires special treatment, refer to product datasheet. **Refer to the website for each format specific product code.

Abbreviations: Axxx= Alexa Fluor®, Az Fr = Azide Free, Biot = Biotin, E = ELISA, EM = Electron Microscopy, FC = Flow Cytometry, FN = Functional Assay, IF/ICC = Immunofluorescence/Immunocytochemistry, IHC-F = Immunohistochemistry - Frozen (Cryostat), IHC-P = Immunohistochemistry - Paraffin, IP = Immunoprecipitation, LE = Low Endotoxin, PB = Pacific Blue™, Pur = Purified, S/N = Supernatant, WB = Western Blotting.