

Coaching courses Frequently Asked Questions

What do I need to have before I start on an Equestrian coaching pathway?

We would recommend any prospective equestrian coach gain significant experience and engage in recognised certificated programmes to give the basics in horse care and management. There are a range of options for this, including the Pony Club tests (see http://www.pcuk.org/index.php/tests_and_achievements/efficiency_tests/), BHS Care and Lunge components of the Grooms pathway (see <https://pathways.bhs.org.uk/career-pathways/groom-pathway/foundation-groom/>) or WBD / SVQ / City and Guilds qualifications in Horse care (e.g. <https://www.cityandguilds.com/qualifications-and-apprenticeships/land-based-services/equine/0071-horse-care#tab=information>) available through colleges and other education providers. These courses and tests will give the grounding in care and safety to ensure you can assure the coaching practices you develop through the pathway are as safe as they can be, looking after the welfare of the horse as well as the participant.

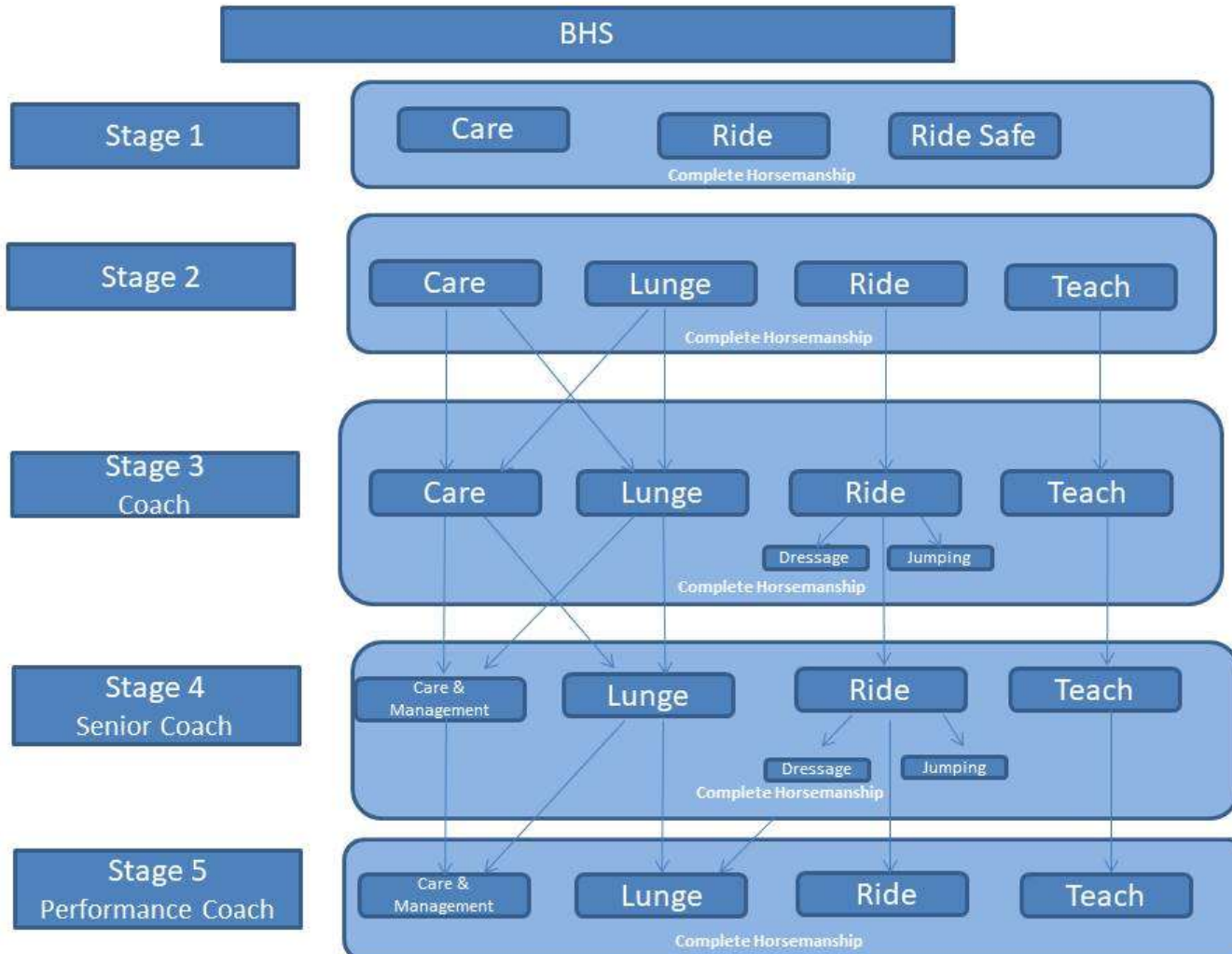
What are the differences between the British Horse Society (BHS) qualifications and Equestrian Coaching Certificate pathway endorsed by UK Coaching Certificate (UKCC)?

- The BHS pathway provides a rounded programme of assessment encompassing riding, horse care and management along with teaching and training practices. This pathway is assessment only and has no taught element delivered directly by the BHS. You can therefore choose their own method of learning, whether that be from text books, practical experience or class-based learning. BHS would actively encourage you to gain as much practical experience as you can while progressing through the stages combined with text books and taught courses which are available via colleges, at equestrian centres and are offered by freelance coaches. The cost of taught courses are not covered by the fees, which are for the assessments only.
- The Equestrian Coaching Certificate pathway endorsed by UKCC is a standardised approach across equestrian disciplines and focusses on the coaching craft in the context of equestrianism. It usually contains a course with a taught element (the course element is mandatory in Scotland if the candidate is applying for help with funding the qualification) – both in the classroom and practically alongside of the development of a coach portfolio based on clients you are coaching – and an assessment which looks at the your coaching skills (whilst coaching elements from the technical syllabus at each level) and also requires the submission of a portfolio. It does not assess knowledge or expertise in relation to horse care and welfare albeit demonstration of an appreciation of equine health and welfare is necessary as a requirement to register for these qualifications either demonstrated through experience or previous qualifications (e.g. BHS Stage 1 Care and Management, Pony Club B Test). These qualifications also have discipline specific pathways which very much focus on the skills and technical requirements for a competition coach within that specific discipline (from grassroots to higher levels of competition) and so you can easily specialise.
- The RDA (Riding for the Disabled Association) have completed a review and re-working of their coaching pathway. Their new pathway aligns with UKCC endorsed pathway but is not endorsed itself part of it.

What are the modules and pathways within the BHS framework? How do they fit together?

To qualify as a coach in complete horsemanship at each stage you have to complete all of the modules. However, if you want to specialise in riding or horse care and management, you can complete the modules for that pathway.

The diagram below shows how the various elements fit together. Please contact the BHS for further guidance.



What will I get for doing the courses? What will they enable me to do?

The table below gives an overview of the nature of each stage and level of the different pathways. The table draws parallels between the technical content at each stage and what they 'qualify' you to do, there are differences between the academic level of the courses. The information in red shows the academic level the content relates to. For more information on the academic levels, please see <https://www.gov.uk/what-different-qualification-levels-mean/list-of-qualification-levels>

BHS Pathway (see https://pathways.bhs.org.uk/career-pathways/coaching-pathway/)	Equestrian pathway endorsed by UKCC (see https://www.bef.co.uk/Detail.aspx?page=UKCC)	Riding for the Disabled Association Pathway (see https://www.rda.org.uk/runningyourgroup/coaching/)
<p>Stage 1 Complete Horsemanship</p> <p>Provides a foundation of practical knowledge in riding, care and stable management to progress through any career pathway.</p> <p>This is not a coaching or teaching qualification.</p> <p>Academic level: 1</p>	<p>Level 1:</p> <p>This is a general qualification providing an introduction to the basic principles of Equestrian Coaching Certificate. It is open to those who are able to meet the minimum entry requirements, please visit the relevant member body website below for more information or contact the relevant coaching coordinator.</p> <p>Level 1 coaches are considered to be Assistant Coaches and can coach under the direct supervision of Level 2, 3 or 4 coaches.</p> <p>Level 1 is offered in general riding, driving, western and polocrosse (there is no Level 1 qualification in the other equestrian disciplines and so you can take direct entry into these at Level 2 if you meet the entry requirements or complete one of the Level 1 qualifications and meet any additional entry requirements for the Level 2).</p> <p>Academic level: 1</p>	<p>Coach in Training</p> <p>Once a prospective coach has an RDA Green Card they can then access two theory modules in Disability Awareness and Equine Knowledge, along with practical modules in Mounting and Dismounting, and Preparing & Assisting RDA sessions.</p> <p>These are followed by a practical assessment called a Pre-Coach Training Session after which candidates will receive their RDA coaching passport and be able to assist better qualified coaches in delivering sessions.</p>
<p>Stage 2 Complete Horsemanship</p>	<p>Level 2:</p>	<p>Coach Certificate</p>

<p>Provides an in-depth foundation knowledge and understanding of equine care and management, lunging, riding on the flat and over fences and the initial principles of teaching and coaching, and will enable coaches to work independently but managed by a senior coach with a higher level qualification.</p> <p>This career certificate demonstrates you have the foundation skills to work in the industry as an assistant groom or work rider competently caring for and riding horses with limited supervision.</p> <p>Academic level: 2</p>	<p>This is available in general riding or discipline specific. The general riding coaching qualifications enables coaches to deliver sessions in a range of environments while the specific qualification is focused on coaching for specific disciplines such as dressage, showjumping, eventing, western, driving, polocrosse, and endurance.</p> <p>Level 2 Coaches are qualified to coach independently without supervision, and to supervise Level 1 coaches.</p> <p>Academic level: 2</p>	<p>Coaches progressing to this level will access two further theory modules (Pre-assessment checklist, and Safeguarding), and three practical modules in Coaching, Horsecare and Knowledge, and Therapy / Medical considerations.</p> <p>Practical Assessment takes the form of one RDA Group Session and / or one RDA Individual session, and one equine assessment.</p> <p>On the successful completion of these the coach will be able to coach independently.</p>
---	--	---

<p>The Stage 3 Coach in Complete Horsemanship</p> <p>Demonstrates your ability to work in the industry as a coach.</p> <p>You will have demonstrated the practical skills and knowledge to work in a commercial establishment, club environment or as a freelance coach. A Stage 3 Coach in Complete Horsemanship supports the development of a horse's way of going, is able to provide initial dressage guidance and flatwork coaching, and help riders work over grids, small courses and cross-country fences.</p> <p>Academic level: 3</p>	<p>Level 3:</p> <p>Coaches can also be general riding or discipline specific and requires a greater depth of technical knowledge and more developed coaching skills. Level 3 coaches are able to plan and implement longer term coaching strategy and effectively evaluate their own coaching practice.</p> <p>Academic level: 3</p>	<p>Advanced Coach Certificate</p> <p>Coaches progressing to the advanced level will access three practical modules in Coaching, Coach the coach, and Horse and Rider biomechanics.</p> <p>Assessment will take the form of one coaching session, one coach the coach session and one equine assessment (lunging or ridden).</p> <p>These coaches will become the leaders and mentors for other coaches progressing through the pathway</p>
--	---	--

<p>Stage 4 Senior Coach in Complete Horsemanship</p> <p>Celebrates your development in coaching both horses and riders in the equestrian industry with considerable knowledge in care and management, riding and</p>	<p>Though not strictly part of the UKCC endorsed Equestrian Coaching Pathway there are a number of continuous professional development programmes available to Level 3 coaches that can help bridge the learning gap to the Level 4 programme.</p>	
--	---	--

<p>teaching. You may be a freelance coach or looking to develop as a trainer across any discipline.</p> <p>A Stage 4 Senior Coach in Complete Horsemanship, will showcase appropriate coaching styles to develop riders and train horses to British Dressage Elementary, British Showjumping Discovery and British Eventing 100.</p> <p>Academic level: 4 (for Care, Lunge and Ride modules) Academic level: 5 (for Teach module)</p>	<p>For example, the National Development Programme in Coaching Excellence is aimed at Level 3 coaches working with adult and young people who participate in equestrian sport for competitive recreation motives. Coaches wanting to join this programme will be ambitious in improving their own performance and will already have success in getting more people participating in equestrian sport and retaining them in the sport by creating enjoyable coaching environments. This is an excellent cross discipline programme for any Level 3 coach regardless of whether they want to progress to Level 4. See here for more information.</p> <p>The Youth Pathway Coaching Programme is a new programme from the British Equestrian Federation, funded by Sport England, that has been created in collaboration with the equestrian Olympic and Paralympic disciplines and is designed to develop coaches currently working within the Youth Pathways, by giving them more insight into the holistic approach to athlete development that nurtures potential from a young age. See here for more information.</p> <p>Alternatively, BHS Stages 4 and 5 may provide additional learning opportunities and if you are a coach in Scotland, SportScotland has a range of CPD and Training and opportunities please click here for more information.</p>	
<p>Stage 5 Performance Coach in Complete Horsemanship</p>	<p>Level 4</p> <p>The British Equestrian Federation and British Rowing work with the University of Gloucestershire to deliver</p>	

<p>Will be an established coach across all three Olympic disciplines, capable of fulfilling a senior role in an equestrian business.</p> <p>A Stage 5 Performance Coach in Complete Horsemanship will have a broad knowledge in all aspects of business management and horse care, including maintaining horse health, care of competition horses and the breeding and management of young horses.</p> <p>Academic level: Approximately 6 but not fully aligned Fellowship</p> <p>Experts in equitation and horsemanship, BHS Fellows are renowned throughout the global equine industry as an ambassador for the equestrian profession and a thought leader in the sector.</p> <p>A Fellow is often the person that people go to for advice, knowledge, expertise and support during their career – as a Fellow you will be an inspiration for many. A Fellow is an admired trainer of horses and riders from grass roots level up to world class competition riders.</p> <p>To gain the Fellowship, you will have a commitment to equine welfare and the continued development of training practices, both for horses and riders,</p>	<p>the UKCC Level 4 Coaching Qualification, the course is a bespoke programme developed specifically for both sports.</p> <p>The UKCC level 4 qualification is for 'high performing' coaches and it involves an advanced syllabus of professional academic education (Postgraduate Diploma) for coaches with considerable experience alongside practical coaching sessions; it is not exclusive to coaches working in a 'high performance' environment.</p> <p>UKCC Level 4 coaches will be visionary and knowledgeable decision makers who display exceptional skills, behaviours and the highest professional and ethical standards. They will advance their own and others' development; lead cutting-edge programmes, or a specialist part of a programme; and make a positive impact on sport performance and behaviour. Level 4 coaches will be able to take all forms of research and translate it into their coaching practice.</p> <p>Academic level: 7</p>	
--	--	--

<p>continuously researching and developing your skills – a Fellow does not stand still in the industry.</p> <p>You will lead others and most importantly, use your enthusiasm to share your knowledge and inspire and influence the next generation of coaches to continue the legacy you will have established.</p>		
--	--	--

It looks like a big step between Level 3 and 4 on the UKCC Endorsed Pathway. Is there anything else I can do as a level 3 coach to further my learning?

Yes. The National Development Programme in Coaching Excellence is aimed at Level 3 coaches working with adult and young people who participate in equestrian sport for competitive recreation motives. Coaches wanting to join this programme will be ambitious in improving their own performance and will already have success in getting more people participating in equestrian sport and retaining them in the sport by creating enjoyable coaching environments. This is an excellent cross discipline programme for any Level 3 coach regardless of whether they want to progress to Level 4. See [here](#) for more information. For details of SportScotland CPD and Training and opportunities please [click here](#) for more information.

The Youth Pathway Coaching Programme is a new programme from the British Equestrian Federation, funded by Sport England, that has been created in collaboration with the equestrian Olympic and Paralympic disciplines and is designed to develop coaches currently working within the Youth Pathways, by giving them more insight into the holistic approach to athlete development that nurtures potential from a young age. See [here](#) for more information.

Which organisations deliver which levels of the UKCC Endorsed Qualifications in Equestrian?

Level	General Riding	Discipline Specific
1	Horse Scotland and The Pony Club	UK Polocrosse, British Reining (Western Riding)
2	Association of British Riding Schools, Horse Scotland and The Pony Club	British Dressage, British Showjumping, British Eventing, British Endurance, British Carriage Driving, British Reining (Western Riding), UK Polocrosse
3	Association of British Riding Schools, Horse Scotland and The Pony Club	British Dressage, British Showjumping, British Eventing, British Endurance, British Carriage Driving, British Reining (Western Riding), UK Polocrosse
4	British Equestrian Federation with the University of Gloucestershire	

How much do they cost?

BHS pathway (Assessment only at the time of writing – 24 th September 2018)
Stage 1 Complete Horsemanship = £295
Stage 2 Complete Horsemanship = £500
Stage 3 Coach in Complete Horsemanship = £630
Stage 4 Senior Coach in Complete Horsemanship = £812 - £833 *
Stage 5 Performance Coach in Complete Horsemanship = £920 - £1045 *

*Depending on whether two assessments are conducted on the same day or not

UKCC endorsed pathway (prices include the taught courses and assessments at the time of writing – 24 th September 2018) – General Riding				
	General Riding (Pony Club)	Horse Scotland	Association of British Riding Schools	British Equestrian Federation
Level 1	£650	Subsidy is available for coaches in Scotland – see https://sportscotland.org.uk/funding/ukcc-subsidy-for-coaches/		
Level 2	£950		£910	
Level 3	£2,150		TBC	
Level 4				£5,250

UKCC endorsed pathway (prices include the taught courses and assessments at the time of writing) - Discipline Specific							
	Dressage	Show-jumping	Eventing	Endurance	Polocrosse	Reining	Carriage Driving
Level 1					TBC	£400	
Level 2	£1340 *	£860	£960	TBC	TBC	£650	TBC
Level 3	£1940 *	£1340	£1800	TBC	TBC	£1000	TBC

All these prices are subject to change. Please contact the relevant member body for the current price.

*This includes the taught elements of the dressage course, plus 4 development days for level 2, 7 development days for level 3, and mentor support.

Is there a minimum age for each of the pathways?

Yes, for the UKCC endorsed pathway you must be at least 14 years old to register and 16 years old to be assessed for Level 1, and at least 16 years old to register and 18 years old to be assessed for Level 2. For the RDA pathway you must be at least 16 to register for the 'Coach in Training' and at least 17 to register for the Coach Certificate and Advanced Coach Certificate. For the British Horse Society pathway, you must be at least 14 years old for Stage 1, at least 16 years old for Stage 2, at least 18 years old for Stage 3 (though you can take the stage 3 Ride, Care and Lunge awards at age 17), at least 19 years old for Stage 4, and at least 22 years old for Stage 5.

How long do they take to complete?

UKCC Endorsed pathway

- Level 1: 3 course dates over a 6-12 week period followed by an assessment day approximately 4 weeks after the final course dates.
- Level 2: 4 course dates over a 10 - 16 week period followed by an assessment date approximately 4weeks later after the final course date.
- Level 3: 6 course dates plus an assessment day spread over 1 year.
- Level 4: Minimum 2 years.

There are some variations to these timescales, so please contact the relevant organisation for the precise details.

RDA Pathway to add

The BHS Pathway is not a taught course so the timescales depend on how long you need to learn and practice the material before you go for the assessment. Contact the BHS for further guidance.

Can I get funding to help with the costs?

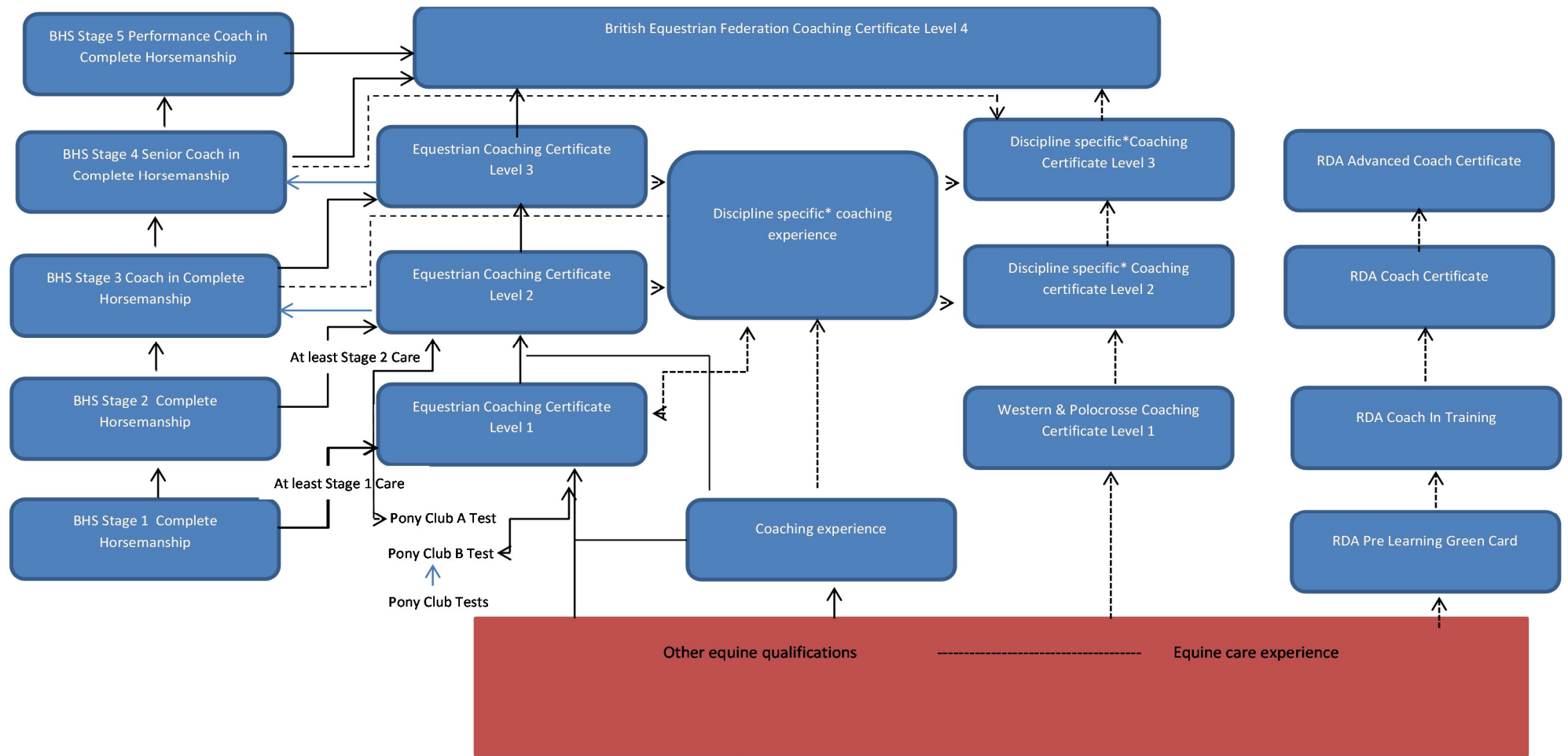
- If you are in Scotland you can apply for a subsidy of up to 70% of the cost of the UKCC endorsed qualification. Contact Horse Scotland for more information.
- If you are in England, some county sports partnerships offer a coach bursary scheme. Find out which county sport partnership you are in [here](#) and then contact them to find out if funding is available.
- Our partners at UK Coaching have produced an excellent funding guide you can download from [here](#).
- BHS has a [scholarship scheme](#) to support candidates towards BHS Stage 3 Coach in Complete Horsemanship, BHS Stage 4 Coach in Complete Horsemanship and BHS Stage 5 in Complete Horsemanship. Please see [here](#) for more information.
- The RDA pathway is funded by the RDA so there are no fees for coaches to pay.

When and where are they running?

- For the current dates of courses and booking information, please contact the organisations delivering the course you want to take. For example, if you are looking for a General Riding level 2, contact the Pony Club or the Association of British Riding Schools. If you're in Scotland, contact Horse Scotland. Similarly, if you want to coach with the RDA, contact them for dates and locations.

Can I transfer from the BHS pathway to the Equestrian Coaching Certificate Pathway endorsed by UKCC and vice versa?

- You can transfer from the BHS pathway to Equestrian Coaching Certificate pathway and vice versa. Your prior learning will be recognised and credited. Please contact the relevant member body to discuss further.
- If you want to transfer from the Equestrian Coaching Certificate pathway to the BHS pathway you may have to be assessed by the BHS in both riding and horse care and management at the relevant level. However, you should be recognised for the coaching element in the Coaching Certificate by not having to be assessed in all of the 'Teach' elements at the relevant BHS level. Please contact the BHS to discuss your experience and prior learning, they can advise you about what stage you can transfer to.
- The diagram below compares the technical content, showing the relationship between the pathways and where you can transfer across, and also shows the RDA pathway alongside. For more information and for guidance on transferring between the pathways, please contact the relevant organisation you want to train with to discuss your prior learning.



Recognised equestrian coaching qualifications



Discipline specific path



Coaching elements will be recognised but to gain title of 'Coach in Complete Horsemanship' you will need to be assessed in horse care and management, ride and lunge

*Discipline specific includes British Dressage Coaching Certificate, British Showjumping Coaching Certificate, British Eventing Coaching Certificate, British Carriage Driving Coaching Certificate, UK Polocrosse Coaching Certificate, Endurance GB Coaching Certificate and Western Coaching Certificate (British Reining). All disciplines have specific entry criteria in relation to their discipline

I've heard UKCC is going. What's the point of doing a UKCC Course? Will my UKCC qualification no longer be valid?

- The BEF recently published a statement of clarification on this (see <https://www.bef.co.uk/News-Detail.aspx?news=statement-on-UKCC>). In essence, the UKCC endorsement has provided a standardised approach to expectations and levels across sports. UKCC endorsed qualifications remain valid and valued, the awarding body remains the same, and we are working with the Chartered Institute for the Management of Sport and Physical Activity (CIMSPA) on the new standards that will ultimately replace the UKCC endorsement. This is a natural evolution of the endorsement system and nothing to be concerned by.