

# SINGAPORE ANCHORAGES, FAIRWAYS AND PILOT STATIONS

40'

50'

104°

With Compliments



**COLLYER**

Collyer Shipping Pte Ltd  
Tel. (65) 6836 6776  
Fax. (65) 6733 0768

JOHOR

JOHOR

JOHOR

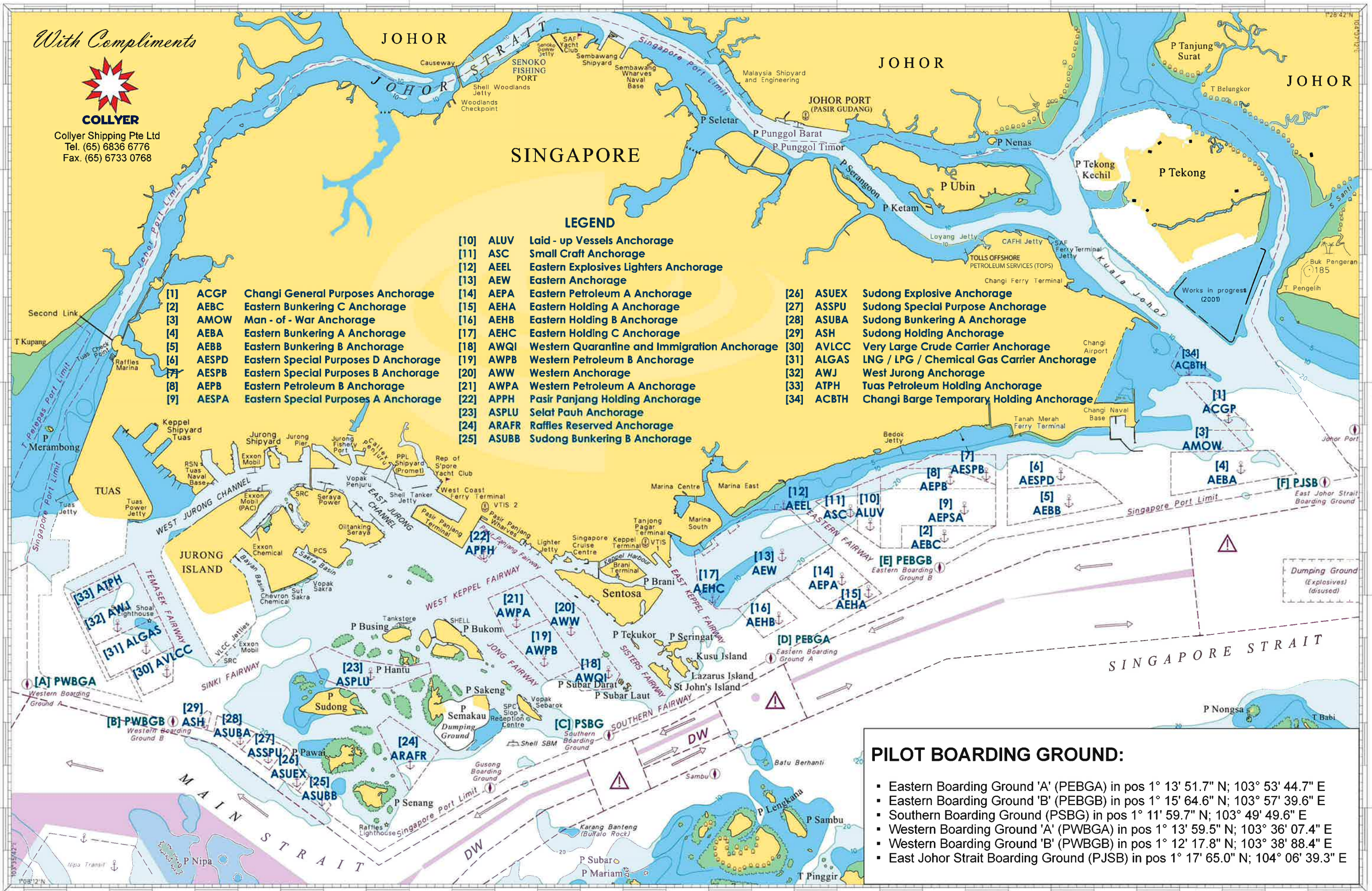
SINGAPORE

## LEGEND

- [1] ACGP Changi General Purposes Anchorage
- [2] AEBC Eastern Bunkering C Anchorage
- [3] AMOW Man - of - War Anchorage
- [4] AEBA Eastern Bunkering A Anchorage
- [5] AEBB Eastern Bunkering B Anchorage
- [6] AESPD Eastern Special Purposes D Anchorage
- [7] AESPB Eastern Special Purposes B Anchorage
- [8] AEPB Eastern Petroleum B Anchorage
- [9] AESPA Eastern Special Purposes A Anchorage

- [10] ALUV Laid - up Vessels Anchorage
- [11] ASC Small Craft Anchorage
- [12] AEEL Eastern Explosives Lighters Anchorage
- [13] AEW Eastern Anchorage
- [14] AEPA Eastern Petroleum A Anchorage
- [15] AEHA Eastern Holding A Anchorage
- [16] AEHB Eastern Holding B Anchorage
- [17] AEHC Eastern Holding C Anchorage
- [18] AWQI Western Quarantine and Immigration Anchorage
- [19] AWPB Western Petroleum B Anchorage
- [20] AWW Western Anchorage
- [21] AWPA Western Petroleum A Anchorage
- [22] APPH Pasir Panjang Holding Anchorage
- [23] ASPLU Selat Pauh Anchorage
- [24] ARAFR Raffles Reserved Anchorage
- [25] ASUBB Sudong Bunkering B Anchorage

- [26] ASUEX Sudong Explosive Anchorage
- [27] ASSPU Sudong Special Purpose Anchorage
- [28] ASUBA Sudong Bunkering A Anchorage
- [29] ASH Sudong Holding Anchorage
- [30] AVLCC Very Large Crude Carrier Anchorage
- [31] ALGAS LNG / LPG / Chemical Gas Carrier Anchorage
- [32] AWJ West Jurong Anchorage
- [33] ATPH Tuas Petroleum Holding Anchorage
- [34] ACBTH Changi Barge Temporary Holding Anchorage



**PILOT BOARDING GROUND:**

- Eastern Boarding Ground 'A' (PEBGA) in pos 1° 13' 51.7" N; 103° 53' 44.7" E
- Eastern Boarding Ground 'B' (PEBGB) in pos 1° 15' 64.6" N; 103° 57' 39.6" E
- Southern Boarding Ground (PSBG) in pos 1° 11' 59.7" N; 103° 49' 49.6" E
- Western Boarding Ground 'A' (PWBGA) in pos 1° 13' 59.5" N; 103° 36' 07.4" E
- Western Boarding Ground 'B' (PWBGB) in pos 1° 12' 17.8" N; 103° 38' 88.4" E
- East Johor Strait Boarding Ground (PJSB) in pos 1° 17' 65.0" N; 104° 06' 39.3" E

40'

50'

104°E